

- COMPONENTS OF CASTLE**
 C1 Water Chute (Origin Point of EW storm water drain)
 C2 Circular Structure of stage VII
 C3 Larger Tank, Castle
 C4 Smaller Tank, Castle
 C5 Bead Workshop, Stage VI, Castle
 C6 Well, Castle
 C7 Storm Water Drain, Castle
 C8 West Gate, Castle
 C9 North Gate, Castle
 C10 East Gate, Castle
 C11 South West Corner, Castle

- COMPONENTS OF BAILEY**
 B1 Granary, Bailey
 B2 Bead Workshop, Bailey
 B3 North Gate, Bailey

- COMPONENTS OF CEREMONIAL GROUND**
 CG1 East Gate, Ceremonial Ground

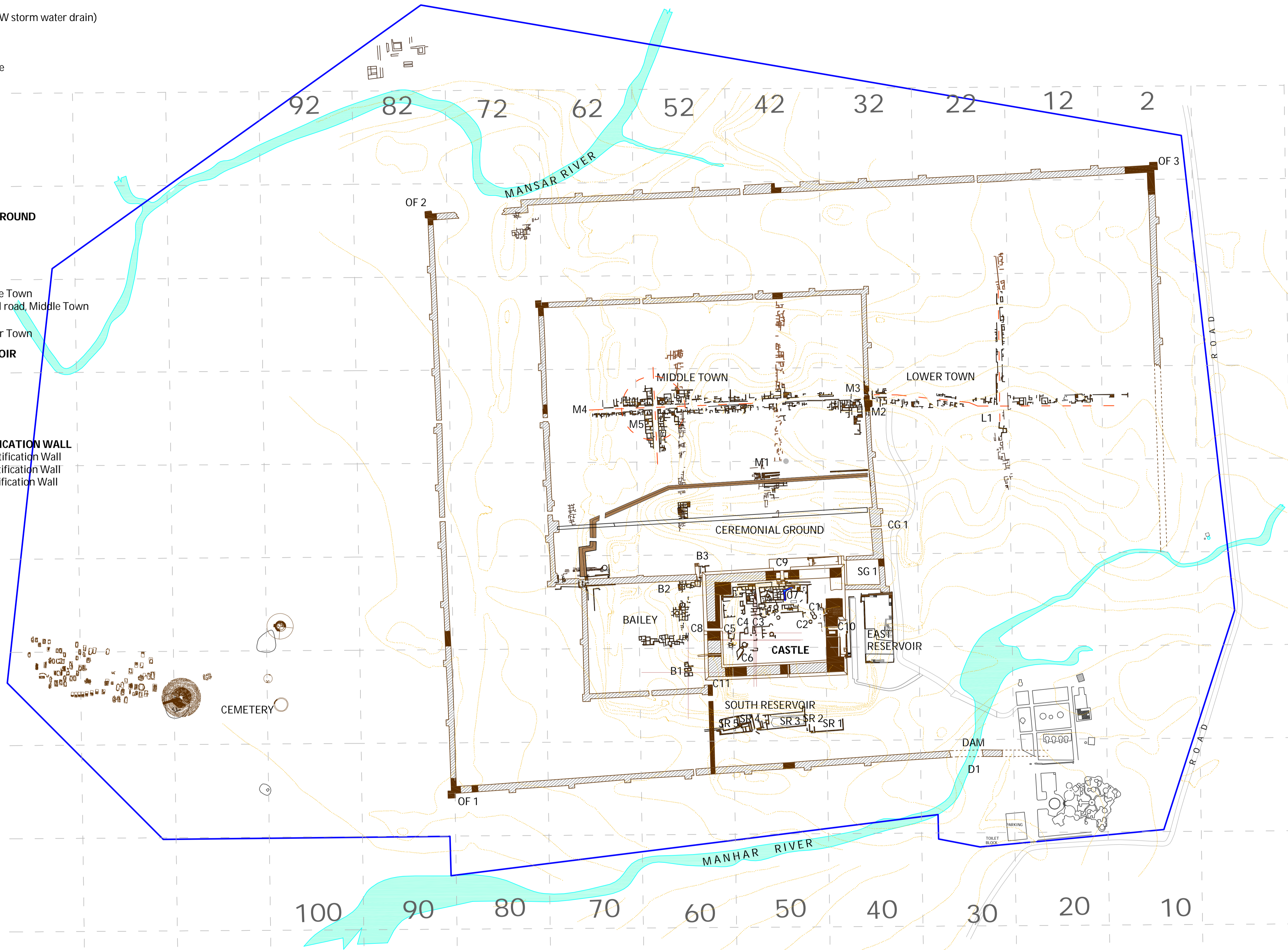
- COMPONENTS OF MIDDLE TOWN**
 M1 South Gate, Middle Town
 M2 East Gate, Middle Town
 M3 Bead Workshop, Middle Town
 M4 East West Arterial Road, Middle Town
 M5 Intersection of EW- NS Arterial road, Middle Town

- COMPONENTS OF LOWER TOWN**
 L1 East -West Arterial Road, Lower Town

- COMPONENTS OF SOUTH RESERVOIR**
 SR1 South Reservoir 1
 SR2 South Reservoir 2
 SR3 South Reservoir 3
 SR4 South Reservoir 4
 SR4 South Reservoir 5

- COMPONENTS OF OUTER FORTIFICATION WALL**
 OF1 South-West Corner, Outer Fortification Wall
 OF2 North West Corner, Outer Fortification Wall
 OF3 North East Corner, Outer Fortification Wall

- D1 Location of Dam across Mahar
 SG 1 Small Ground, (Stadium)



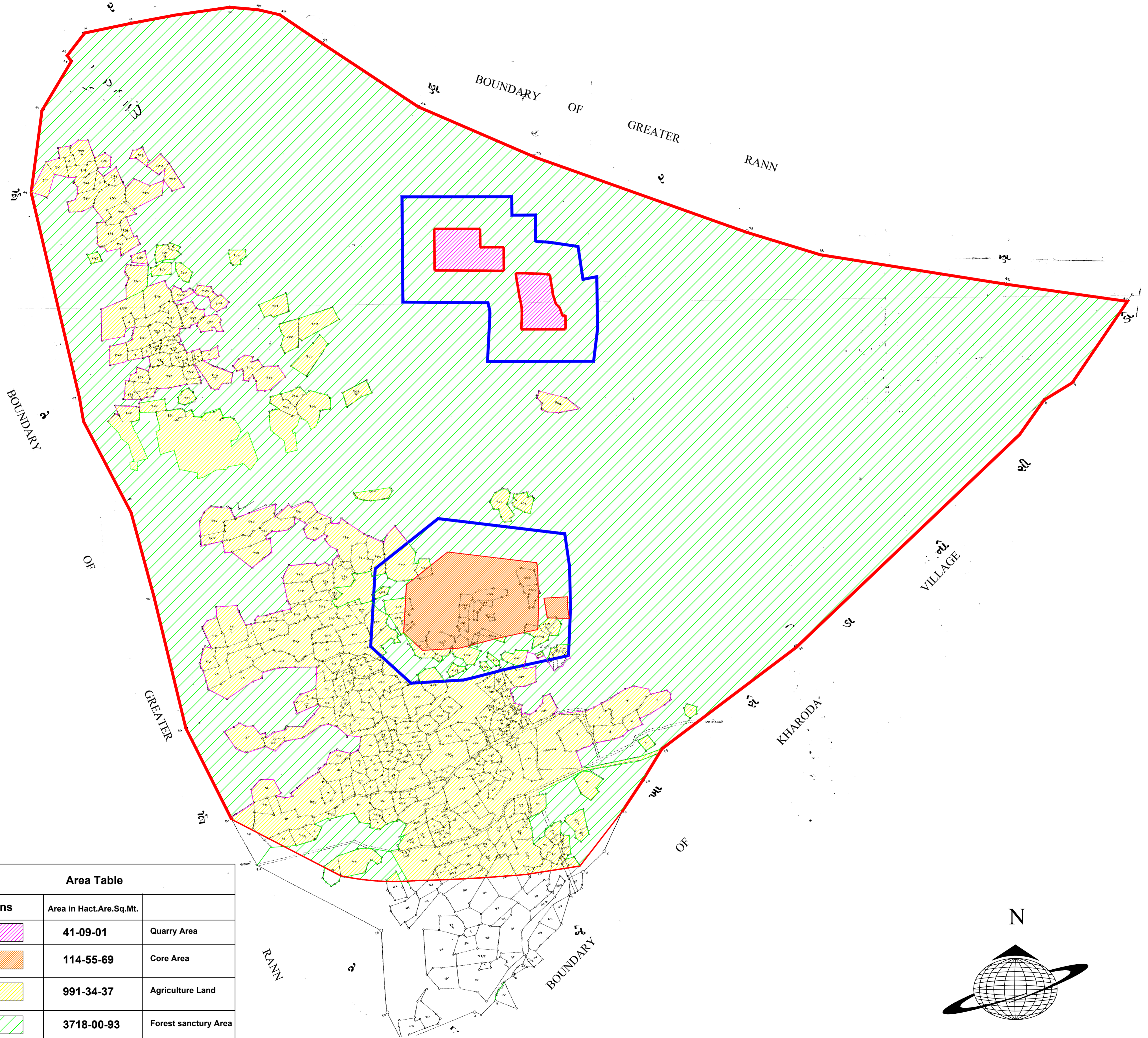
DHOLAVIRA SITE PLAN




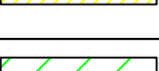
SCALE 	NORTH 	ARCHAEOLOGICAL SURVEY OF INDIA	
		PROJECT WORLD HERITAGE NOMINATION DOSSIER DHOLAVIRA: A HARAPPAN CITY	
DISTRICT KACHCHH	STATE GUJARAT (INDIA)		
DATE JAN .2020			

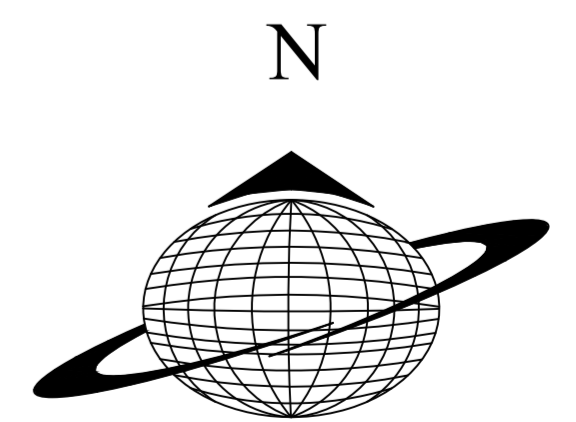
village : Dholavira

Taluka : Bhachau

Dist. : Kachchh



Area Table		
Signs	Area in Hact.Are.Sq.Mt.	
	41-09-01	Quarry Area
	114-55-69	Core Area
	991-34-37	Agriculture Land
	3718-00-93	Forest sanctuary Area
Total Area	4865-00-00	As per DSO record



scale 1 cm =200 mt.