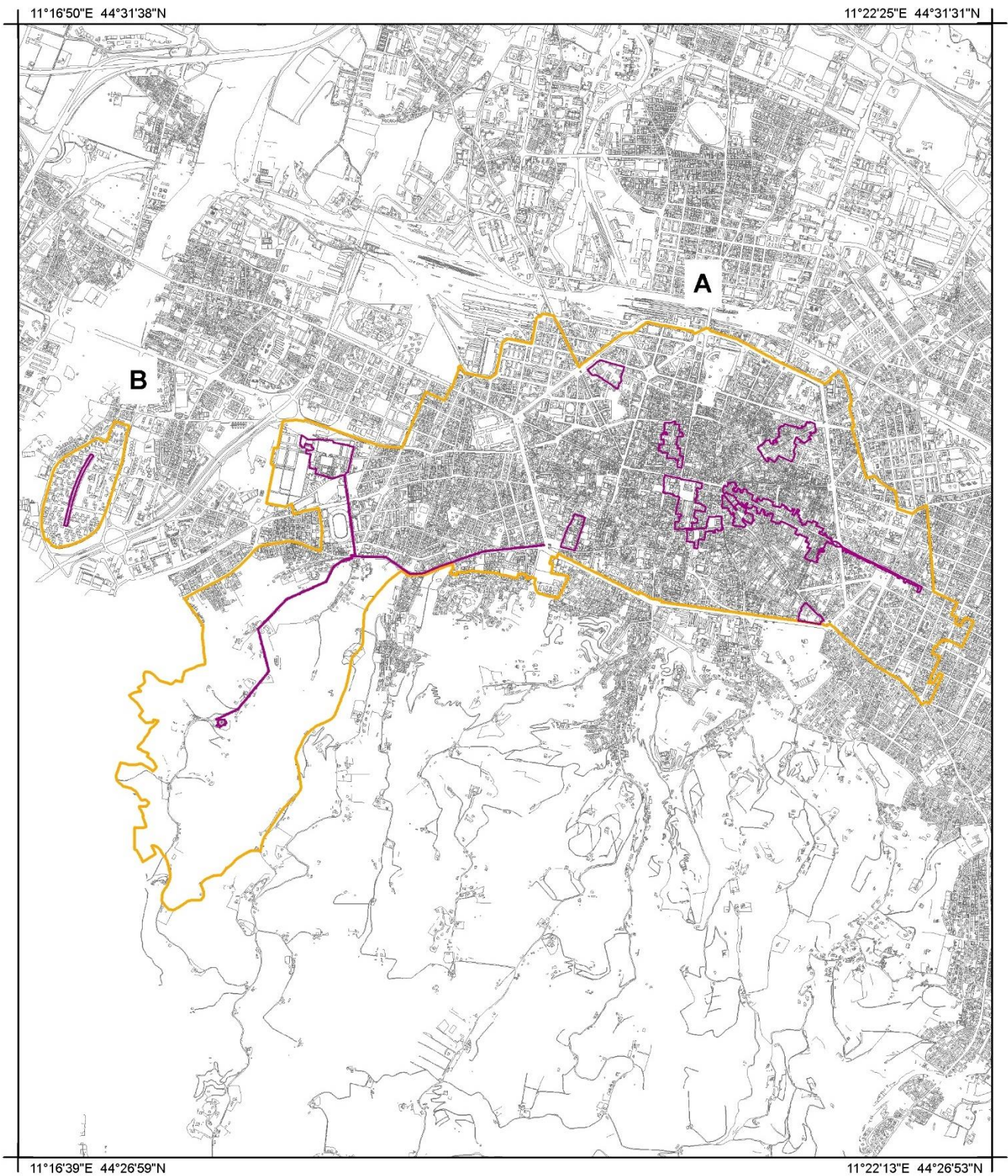




1.e.2. Boundaries of the Nominated property and buffer zone

1.e.2.1. The Porticoes of Bologna



 Nominated component (52,45 ha)

 Buffer zone (1125,62 ha)



0 0,5 1
Km

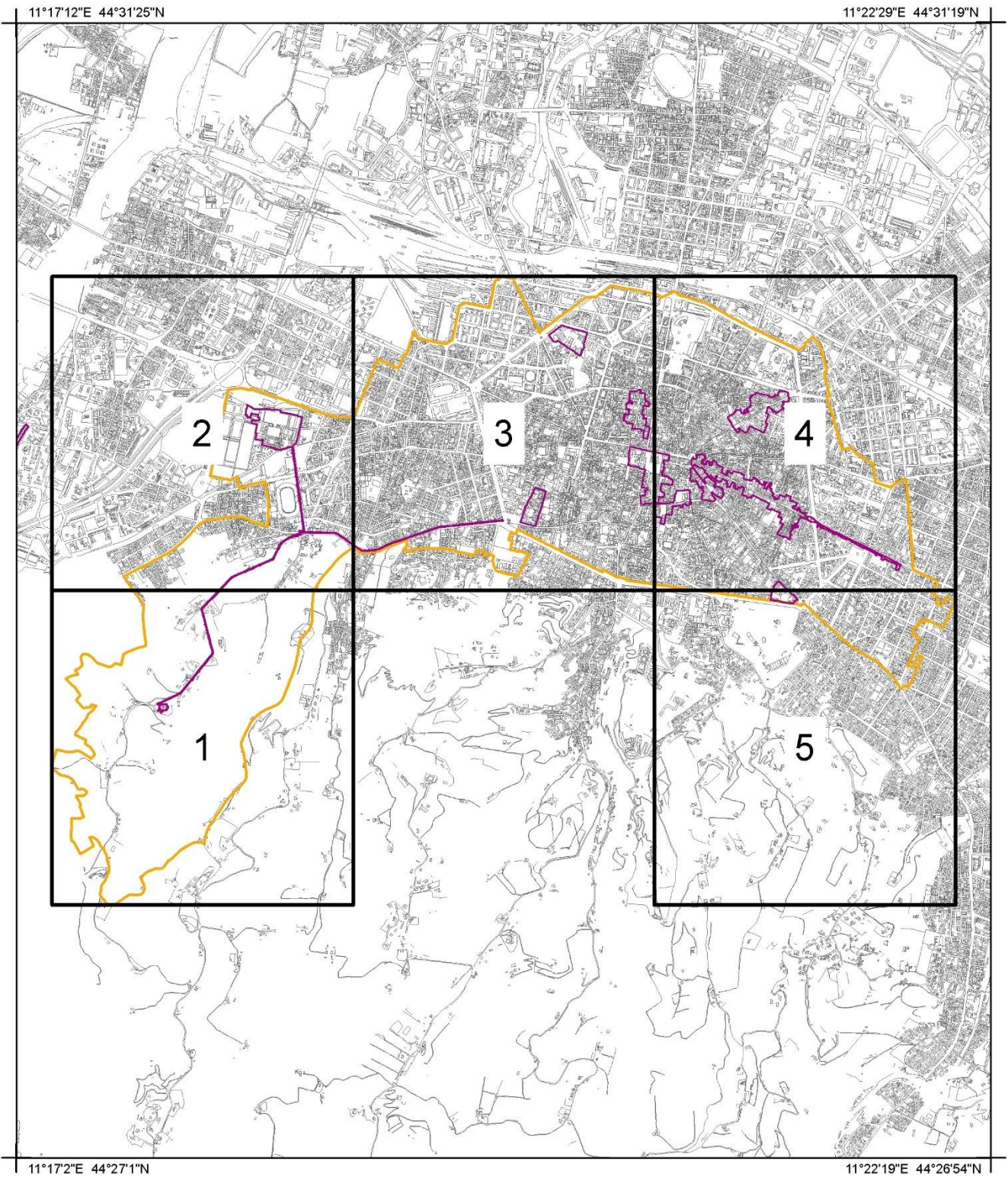
Print Scale: 1:40.000

Projected coordinate system: UTM-WGS84


Base map: municipality of Bologna, CTC 2016

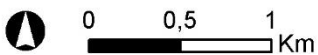
Date: February 2021

1.e.2.2. The Porticoes of Bologna (Buffer zone A)



 Nominated component (52,45 ha)

 Buffer zone A (1089,37 ha)



Print Scale: 1:38.000

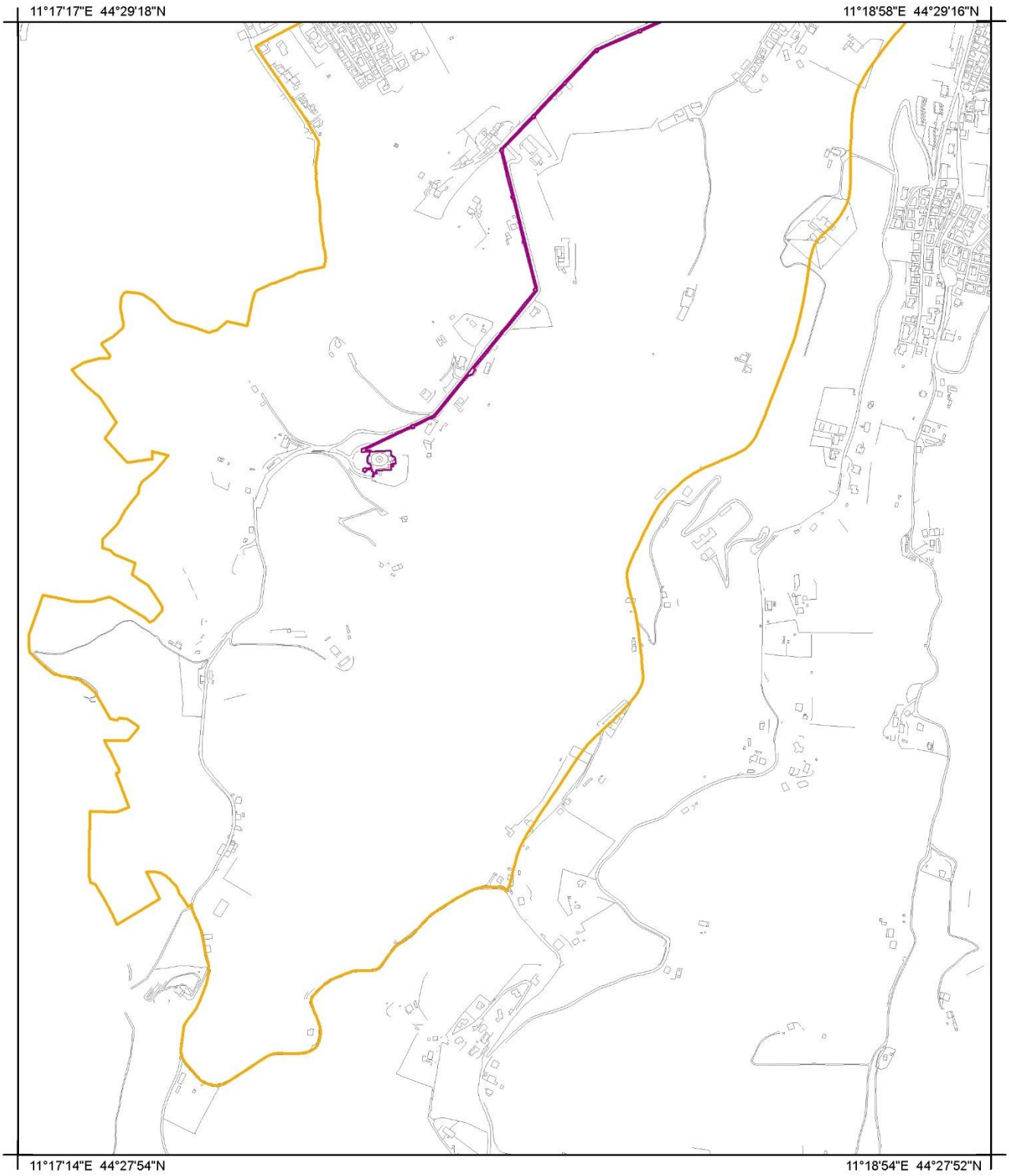
Projected coordinate system: UTM-WGS84



Base map: municipality of Bologna, CTC 2016

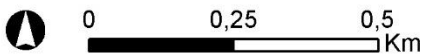
Date: February 2021



Section 01



-  Nominated component
-  Buffer zone



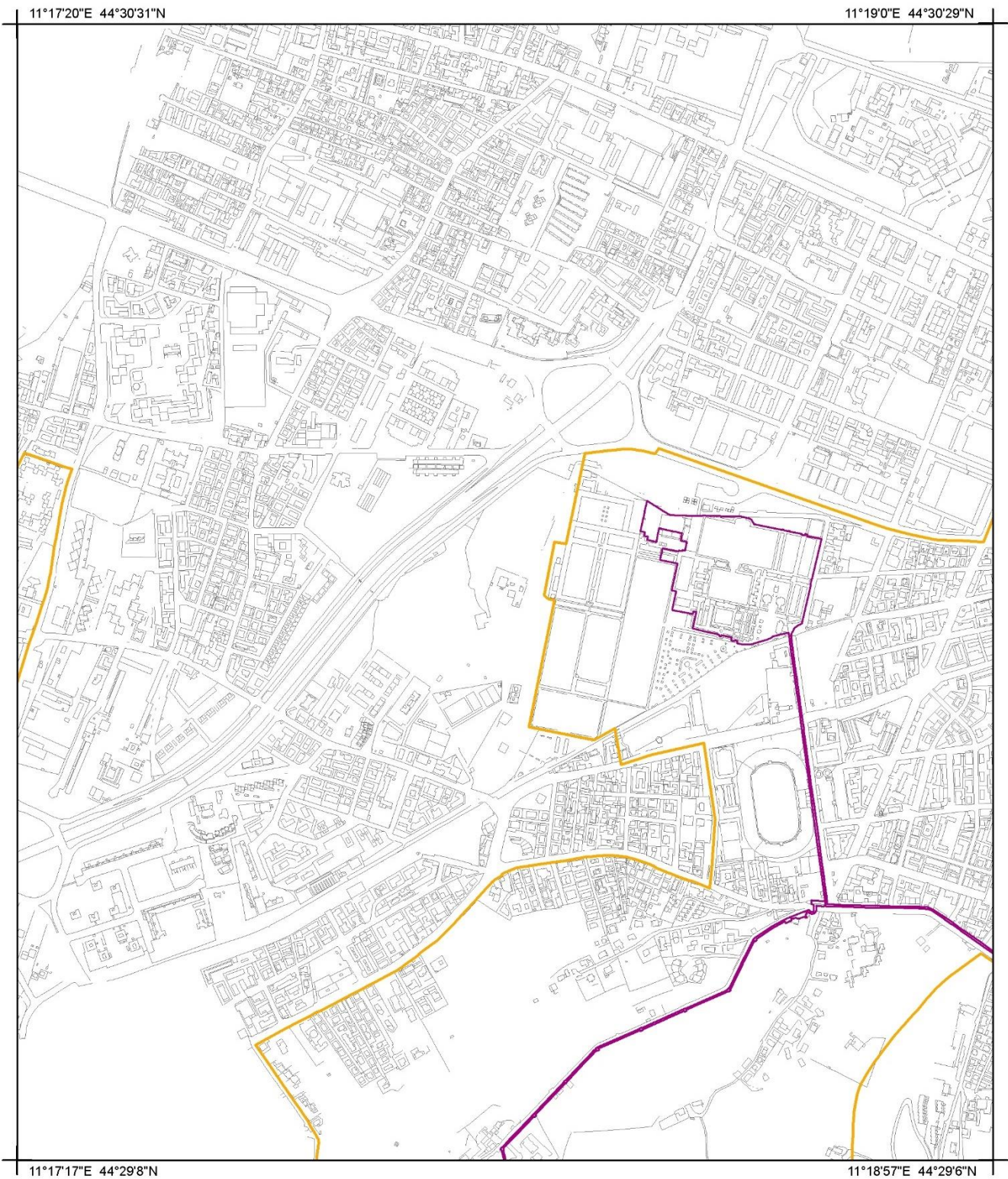
Print Scale: 1:12.000

Projected coordinate system: UTM-WGS84

Base map: municipality of Bologna, CTC 2016

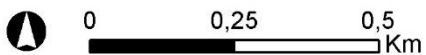
Date: February 2021

Section 02



 Nominated component

 Buffer zone



Print Scale: 1:12.000

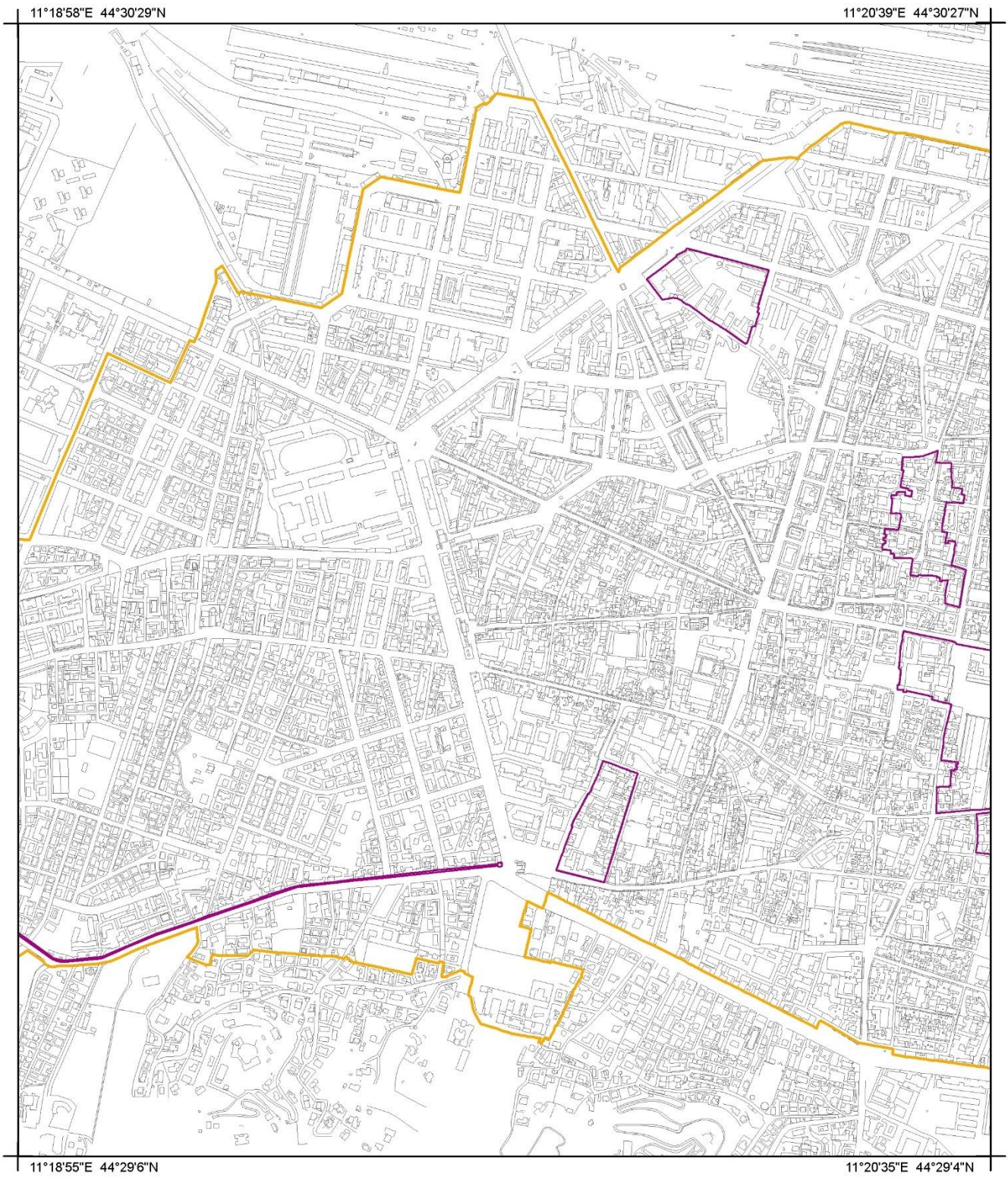
Projected coordinate system: UTM-WGS84



Base map: municipality of Bologna, CTC 2016

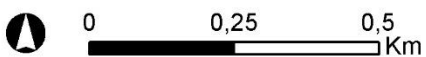
Date: February 2021



Section 03



-  Nominated component
-  Buffer zone



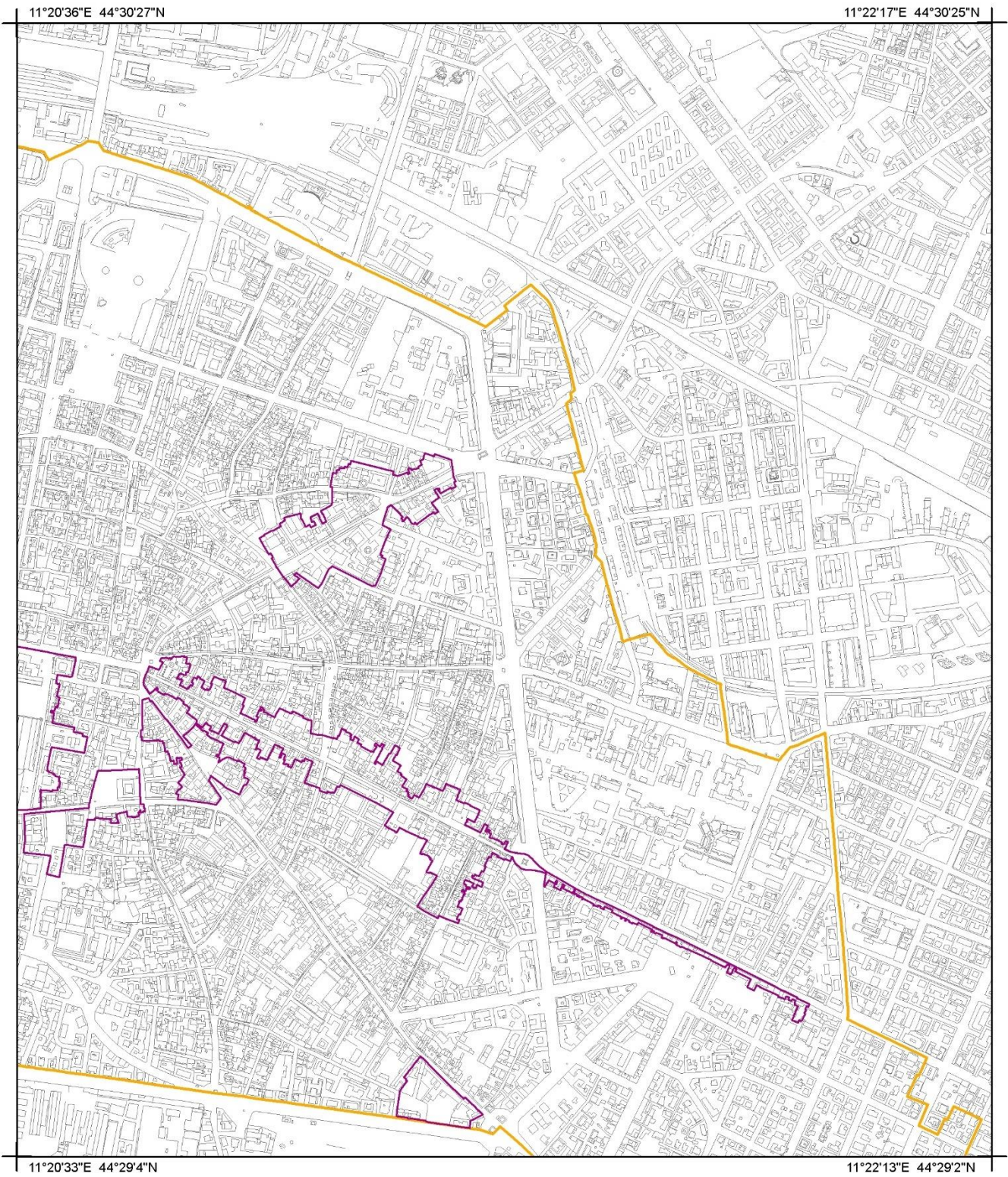
Print Scale: 1:12.000

Projected coordinate system: UTM-WGS84

Base map: municipality of Bologna, CTC 2016

Date: February 2021

Section 04



 Nominated component

 Buffer zone



0 0,25 0,5
Km

Print Scale: 1:12.000

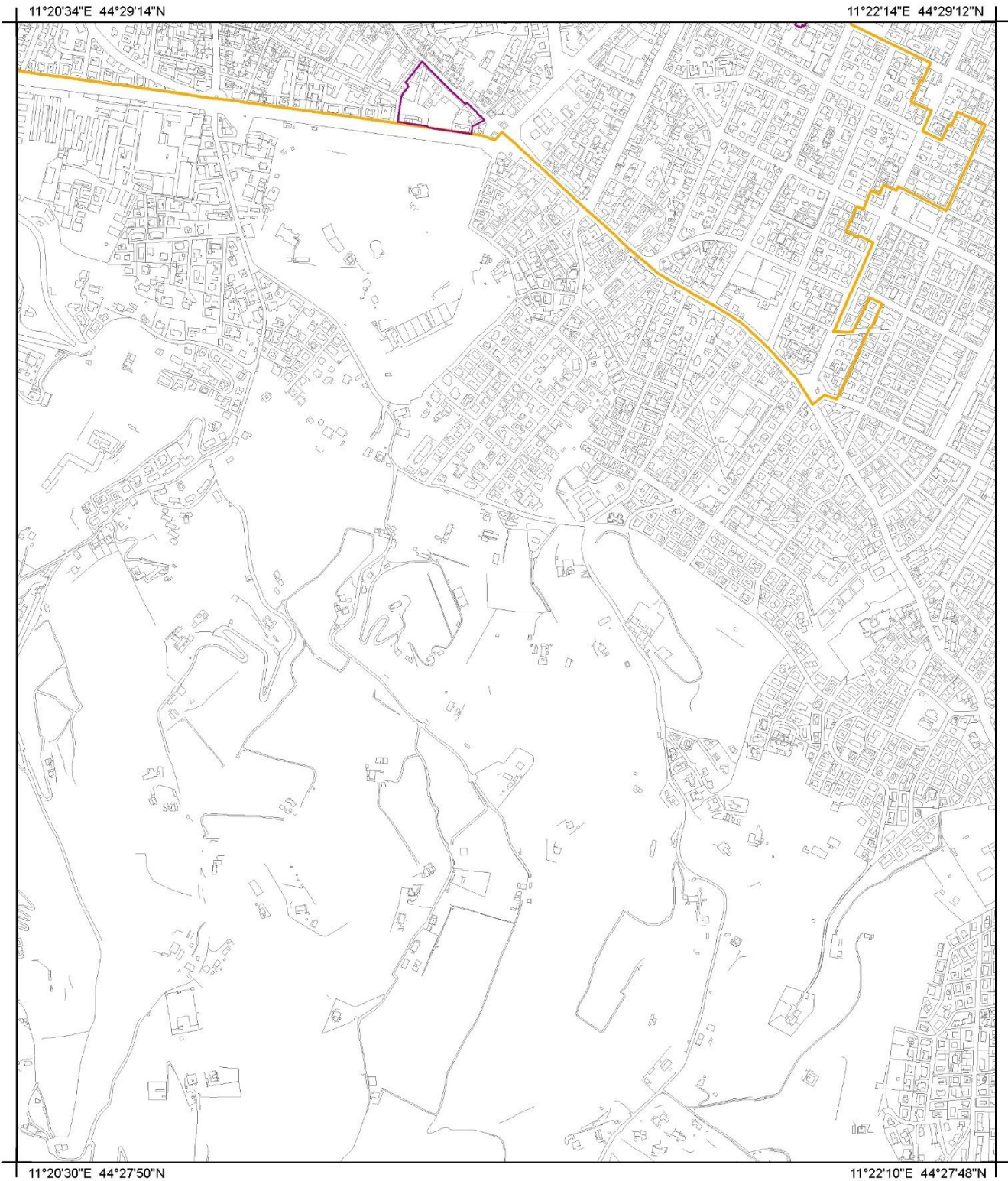
Projected coordinate system: UTM-WGS84

Base map: municipality of Bologna, CTC 2016

Date: February 2021

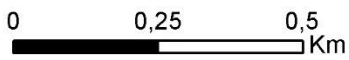


Section 05



 Nominated component

 Buffer zone



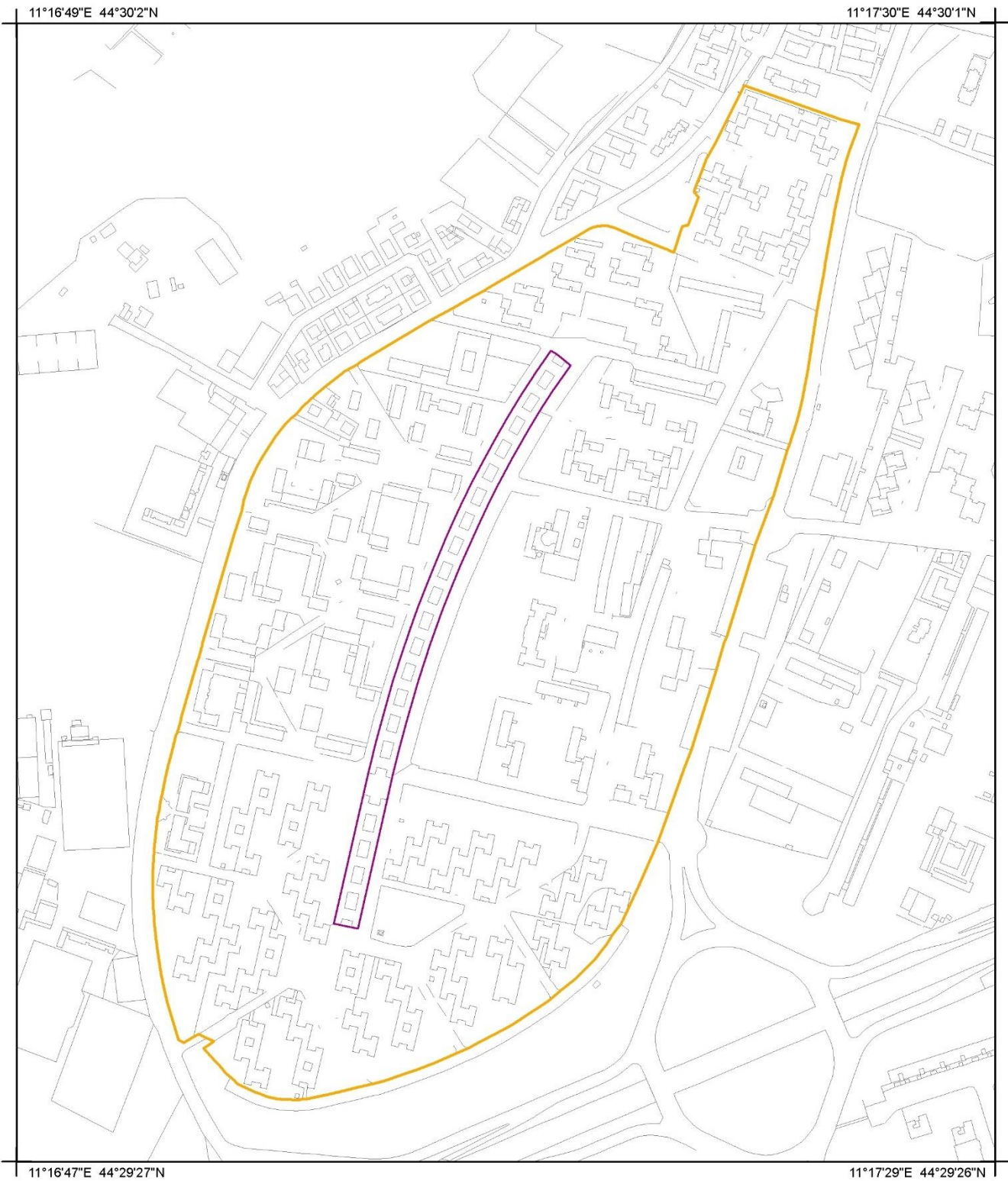
Print Scale: 1:12.000



Projected coordinate system: UTM-WGS84

Base map: municipality of Bologna, CTC 2016

Date: February 2021

1.e.2.3. The Porticoes of Bologna (Buffer zone B)



-  Nominated component
-  Buffer zone B (36,25 ha)



Print Scale: 1:5.000

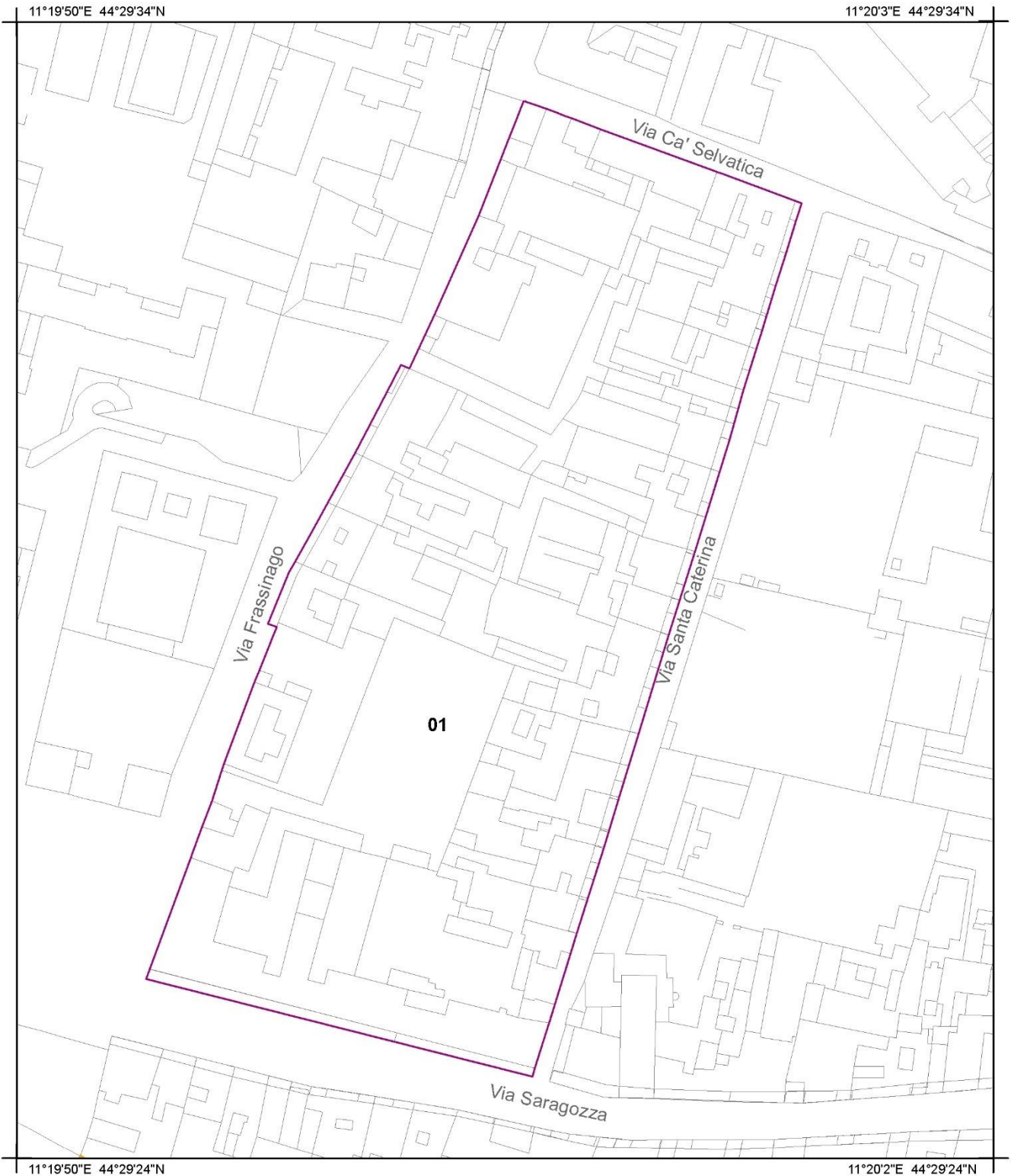
Projected coordinate system: UTM-WGS84




Base map: municipality of Bologna, CTC 2016

Date: February 2021



1.e.2.4. Santa Caterina e Saragozza_Component 01



-  Nominated component (2,67 ha)
-  Other components of the property
-  Buffer zone

Print Scale: 1:1.500

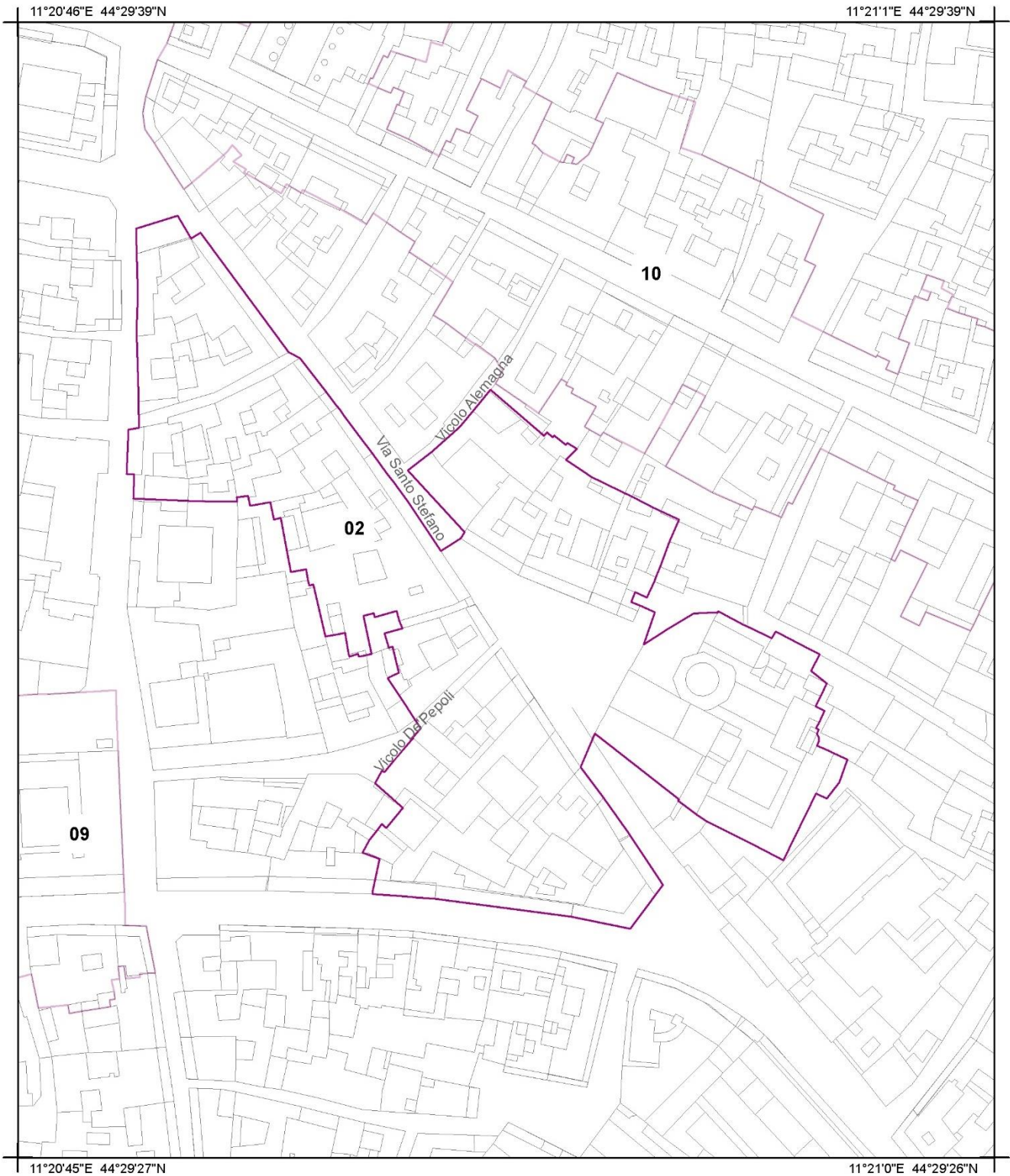
Projected coordinate system: UTM-WGS84




Base map: municipality of Bologna, CTC 2016

Date: February 2021



1.e.2.5. Santo Stefano e Mercanzia_Component 02



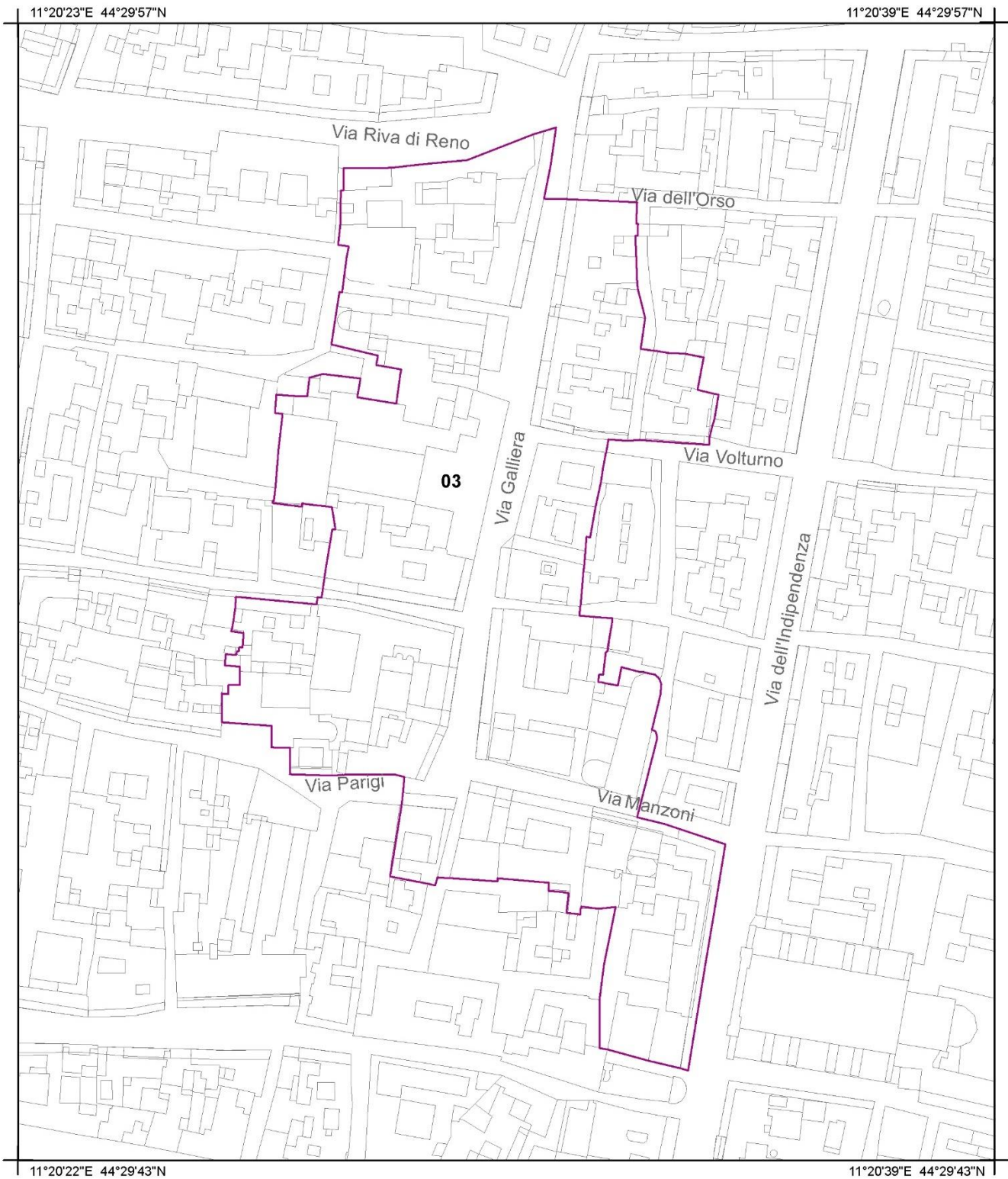
-  Nominated component (2,39 ha)
-  Other components of the property
-  Buffer zone




Print Scale: 1:1.800
Projected coordinate system: UTM-WGS84
Base map: municipality of Bologna, CTC 2016
Date: February 2021





1.e.2.6. Galliera_Component 03



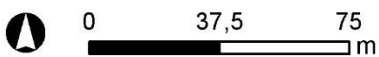
-  Nominated component (3,58 ha)
-  Other components of the property
-  Buffer zone

Print Scale: 1:2.000

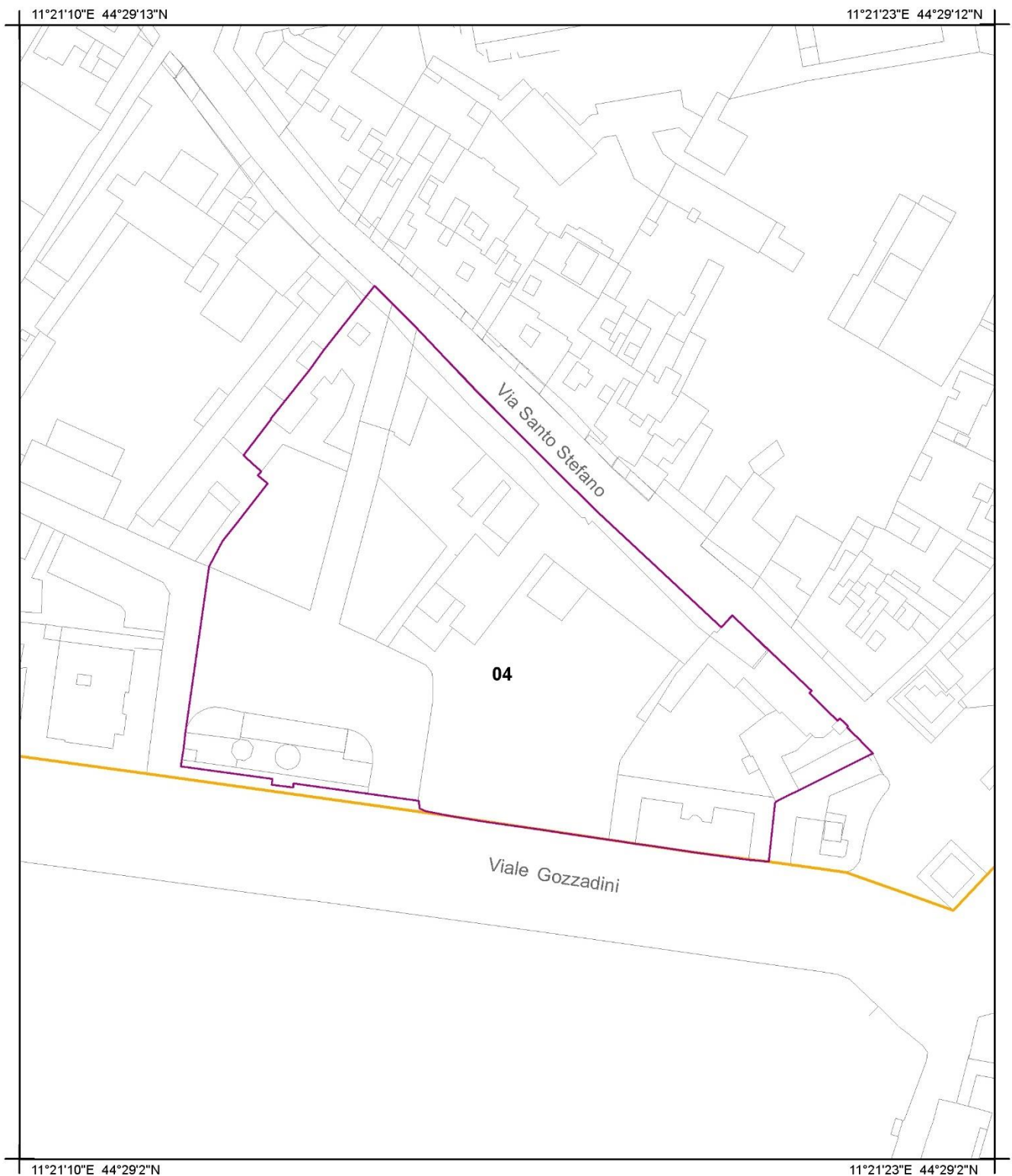
Projected coordinate system: UTM-WGS84




Base map: municipality of Bologna, CTC 2016

Date: February 2021



1.e.2.7. Baraccano_Component 04



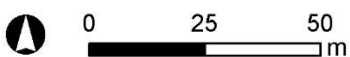
-  Nominated component (1,71 ha)
-  Other components of the property
-  Buffer zone

Print Scale: 1:1.500

Projected coordinate system: UTM-WGS84

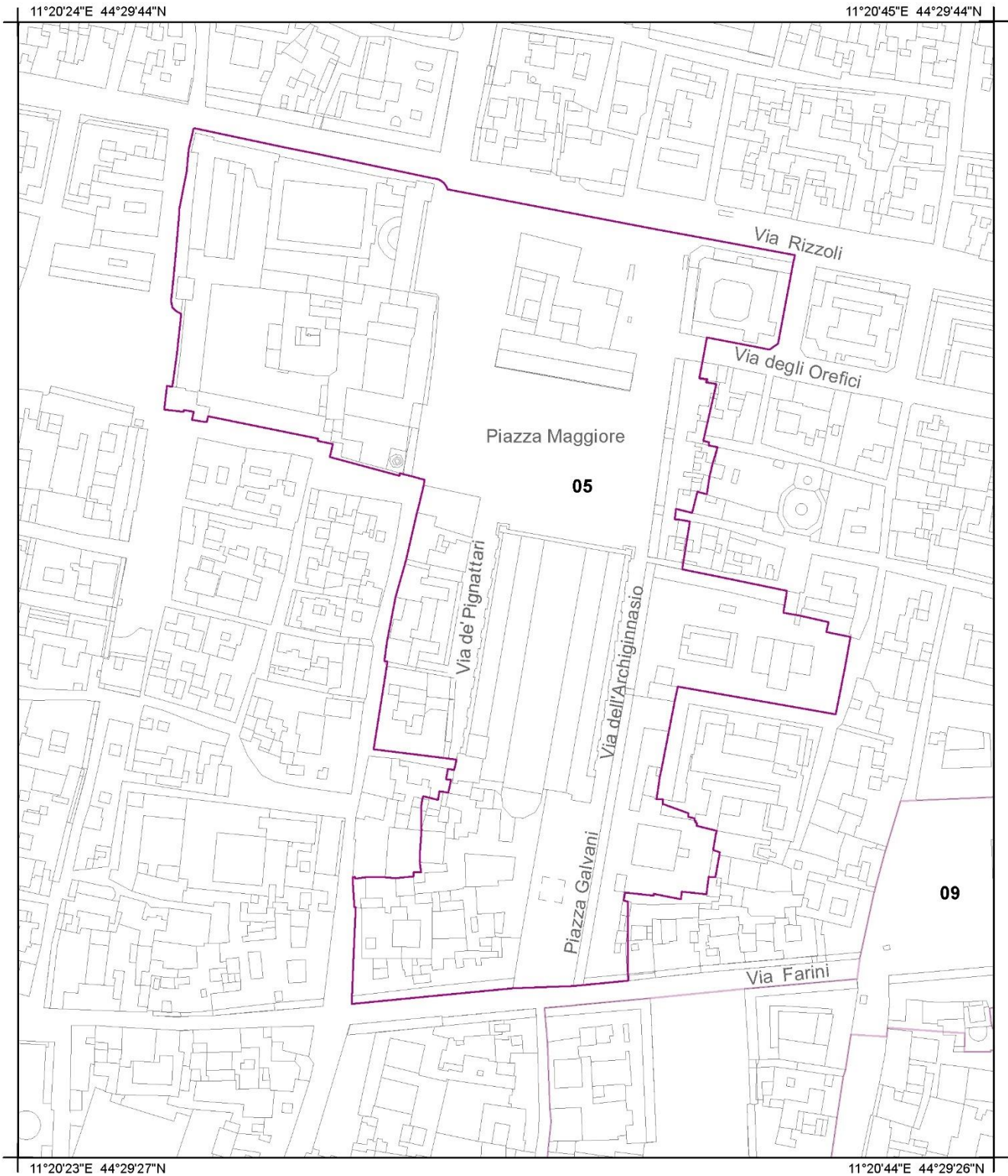
Base map: municipality of Bologna, CTC 2016




Date: February 2021





1.e.2.8. *Pavaglione, Banchi e Piazza Maggiore_Component 05*



-  Nominated component (7,07 ha)
-  Other components of the property
-  Buffer zone

Print Scale: 1:2.500

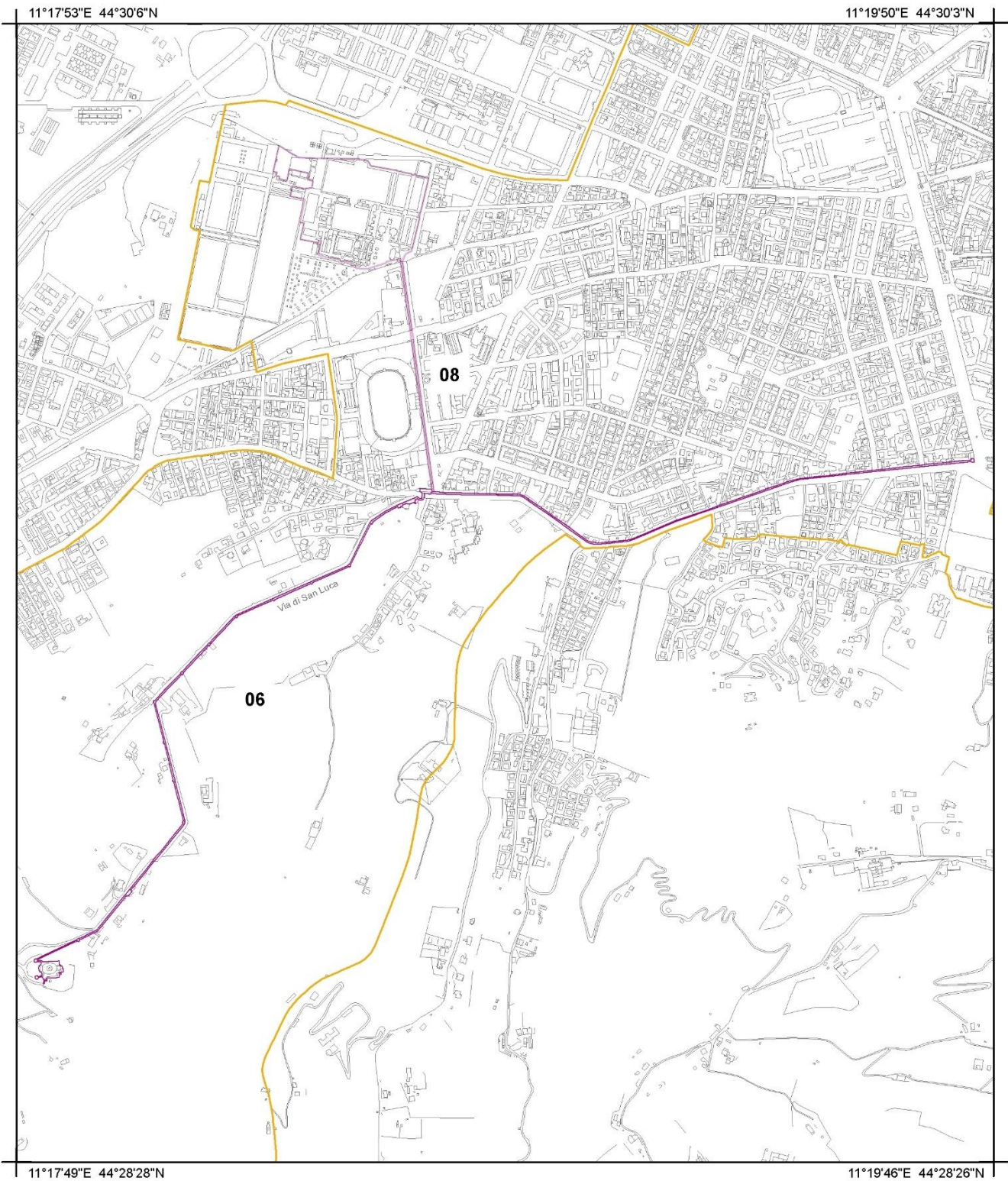
Projected coordinate system: UTM-WGS84




Base map: municipality of Bologna, CTC 2016

Date: February 2021



1.e.2.9. San Luca_Component 06



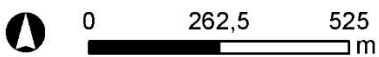
-  Nominated component (1,60 ha)
-  Other components of the property
-  Buffer zone

Print Scale: 1:14.000

Projected coordinate system: UTM-WGS84

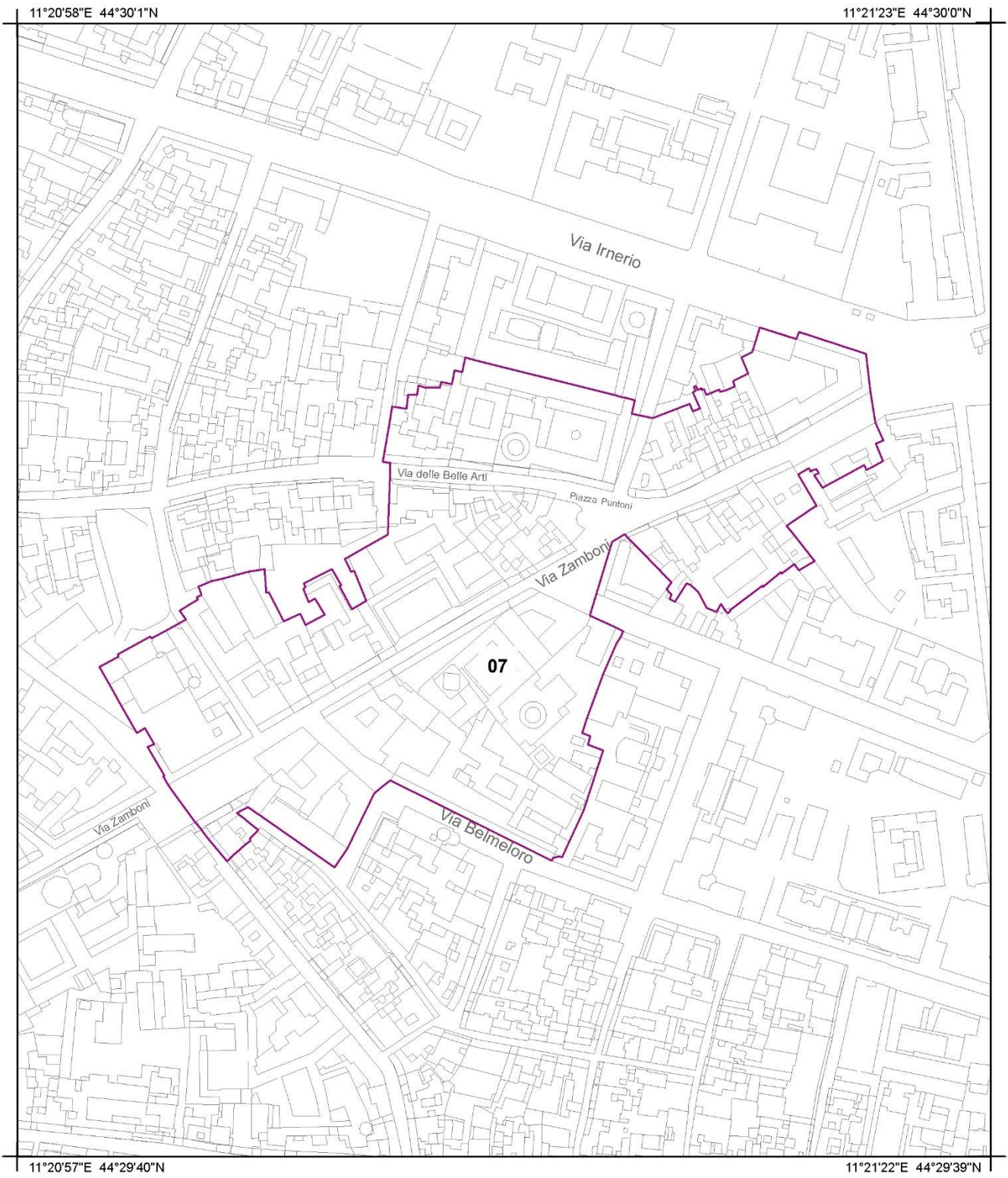
Base map: municipality of Bologna, CTC 2016




Date: February 2021



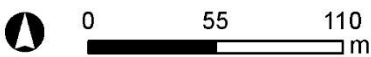


1.e.2.10. *Università e Accademia_Component 07*

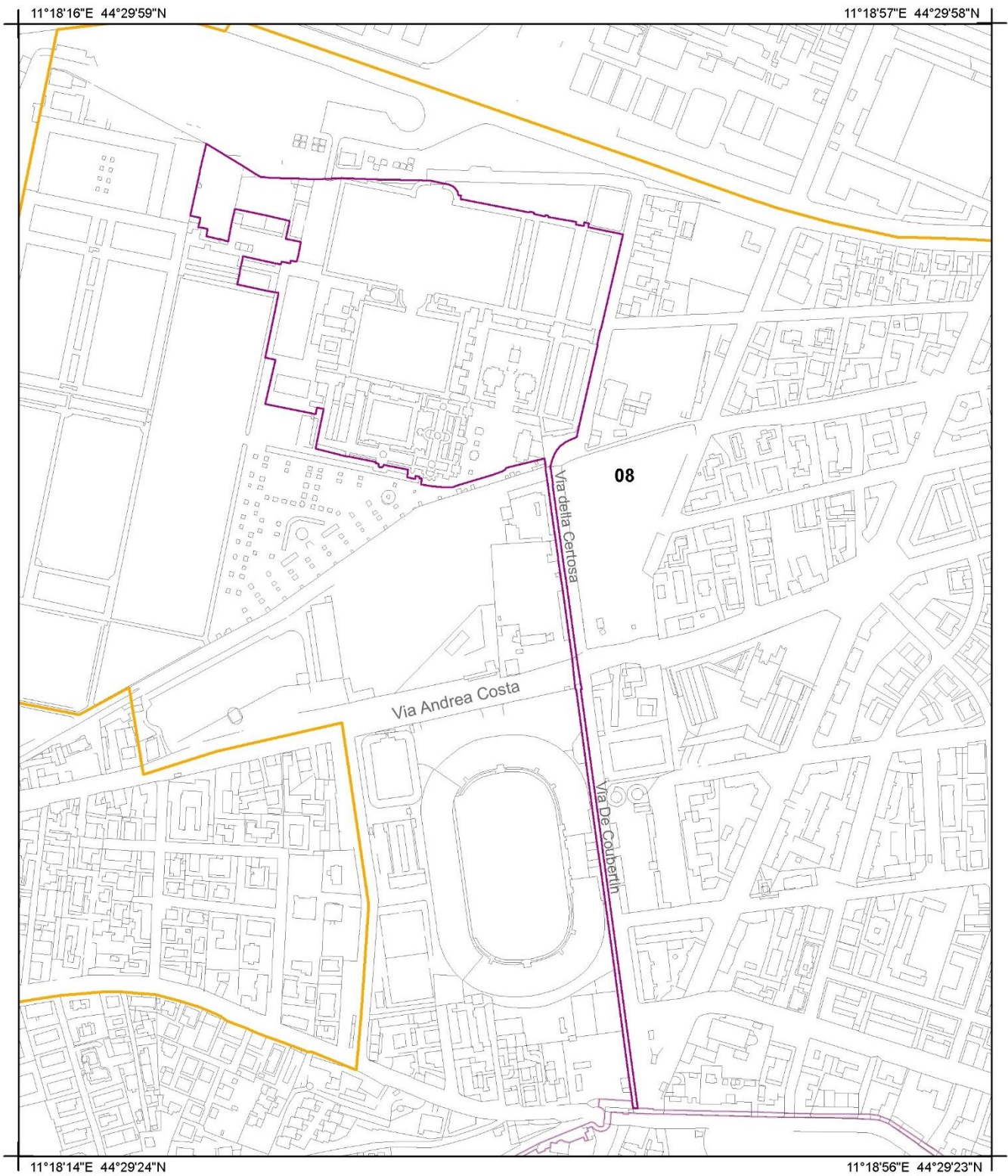





-  Nominated component (6,53 ha)
-  Other components of the property
-  Buffer zone

Print Scale: 1:3.000
Projected coordinate system: UTM-WGS84
Base map: municipality of Bologna, CTC 2016
Date: February 2021



1.e.2.11. Certosa_Component 08



-  Nominated component (8,44 ha)
-  Other components of the property
-  Buffer zone

Print Scale: 1:5.000

Projected coordinate system: UTM-WGS84

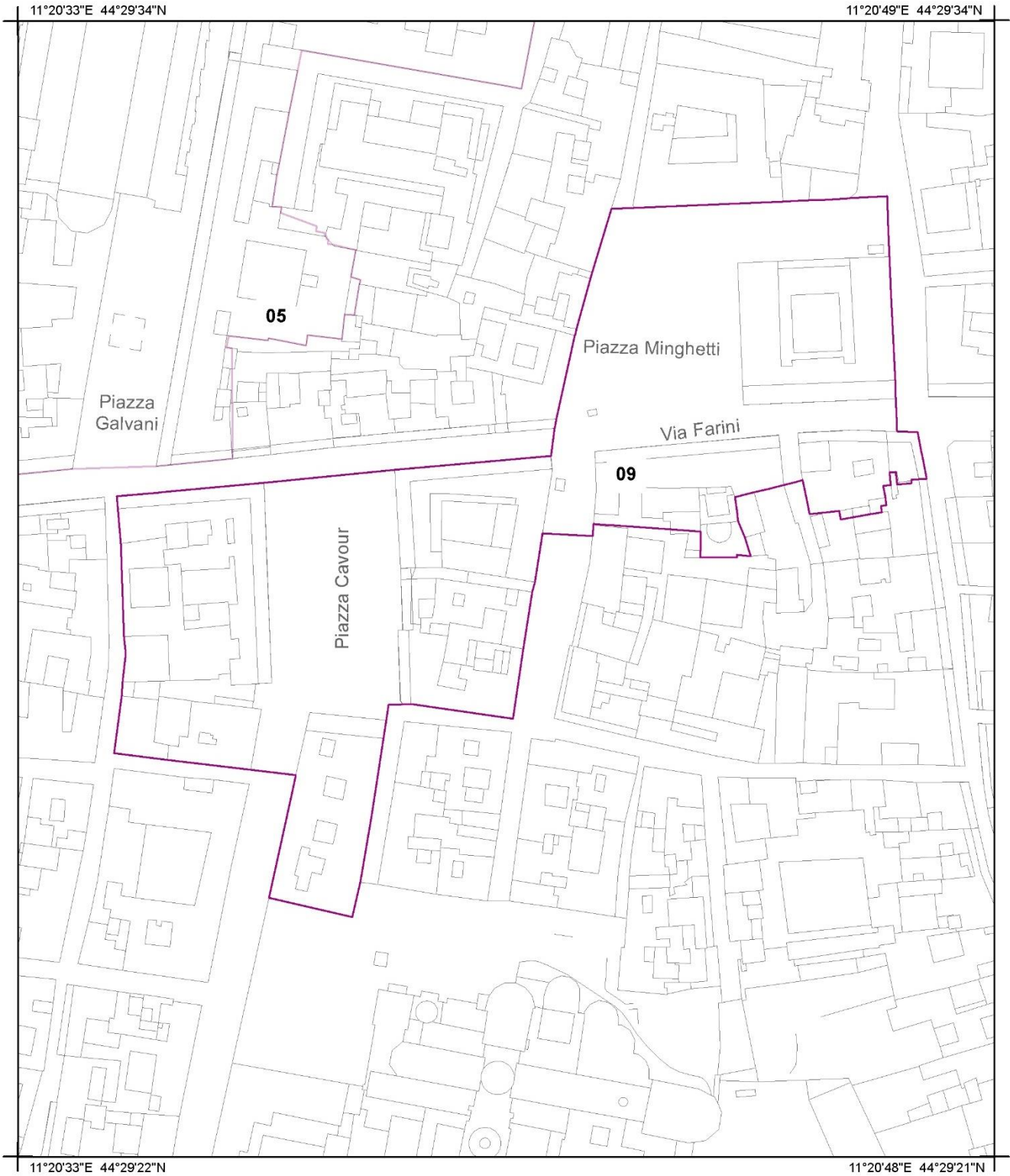
Base map: municipality of Bologna, CTC 2016




Date: February 2021





1.e.2.12. Cavour, Farini e Minghetti_Component 09



-  Nominated component (2,62 ha)
-  Other components of the property
-  Buffer zone

Print Scale: 1:1.800

Projected coordinate system: UTM-WGS84

Base map: municipality of Bologna, CTC 2016

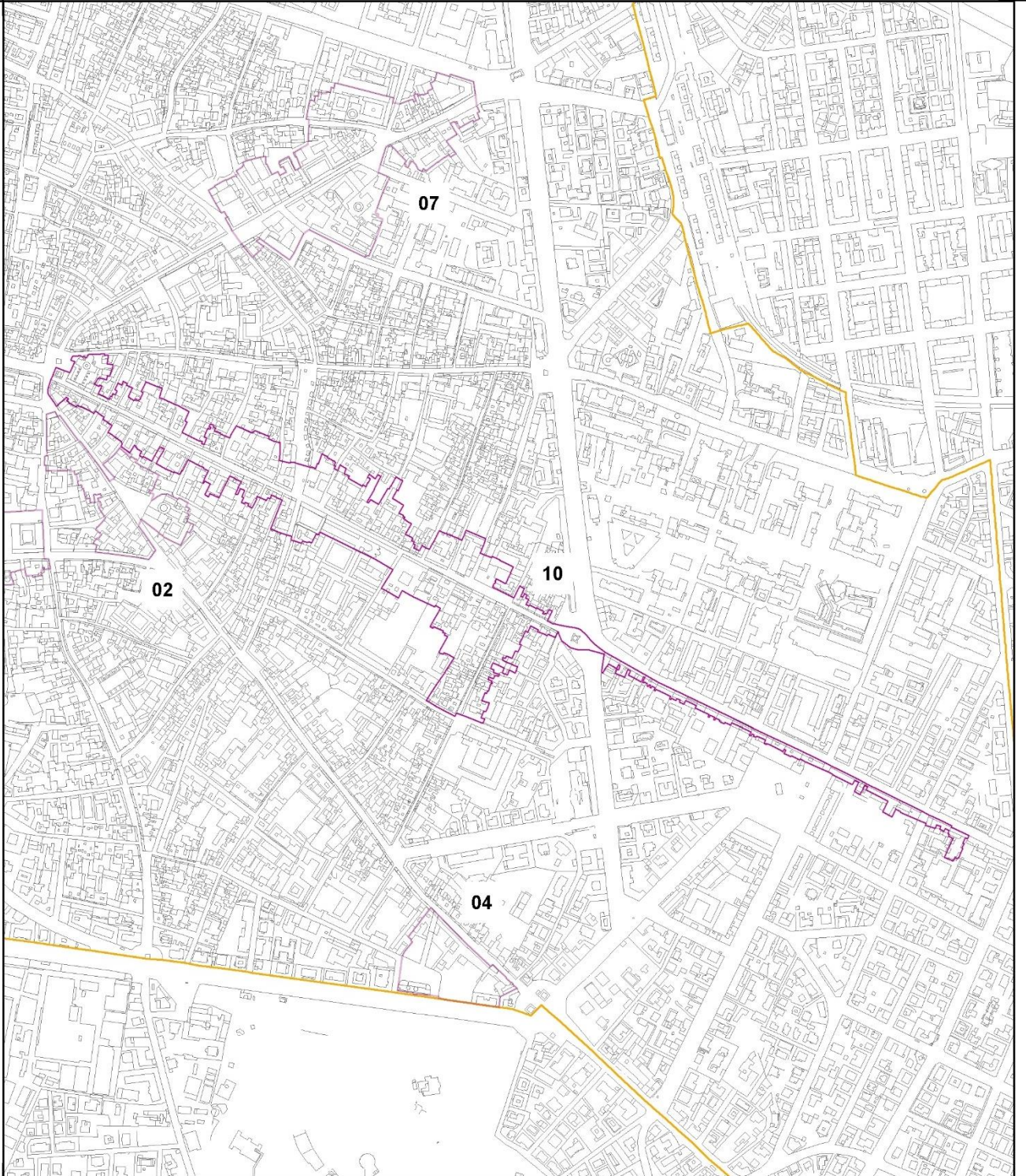
Date: February 2021



1.e.2.13. Strada Maggiore_Component 10




11°20'45"E 44°29'59"N

11°22'0"E 44°29'57"N



11°20'43"E 44°28'56"N

11°21'58"E 44°28'55"N

-  Nominated component (10,99 ha)
-  Other components of the property
-  Buffer zone

Print Scale: 1:9.000

Projected coordinate system: UTM-WGS84

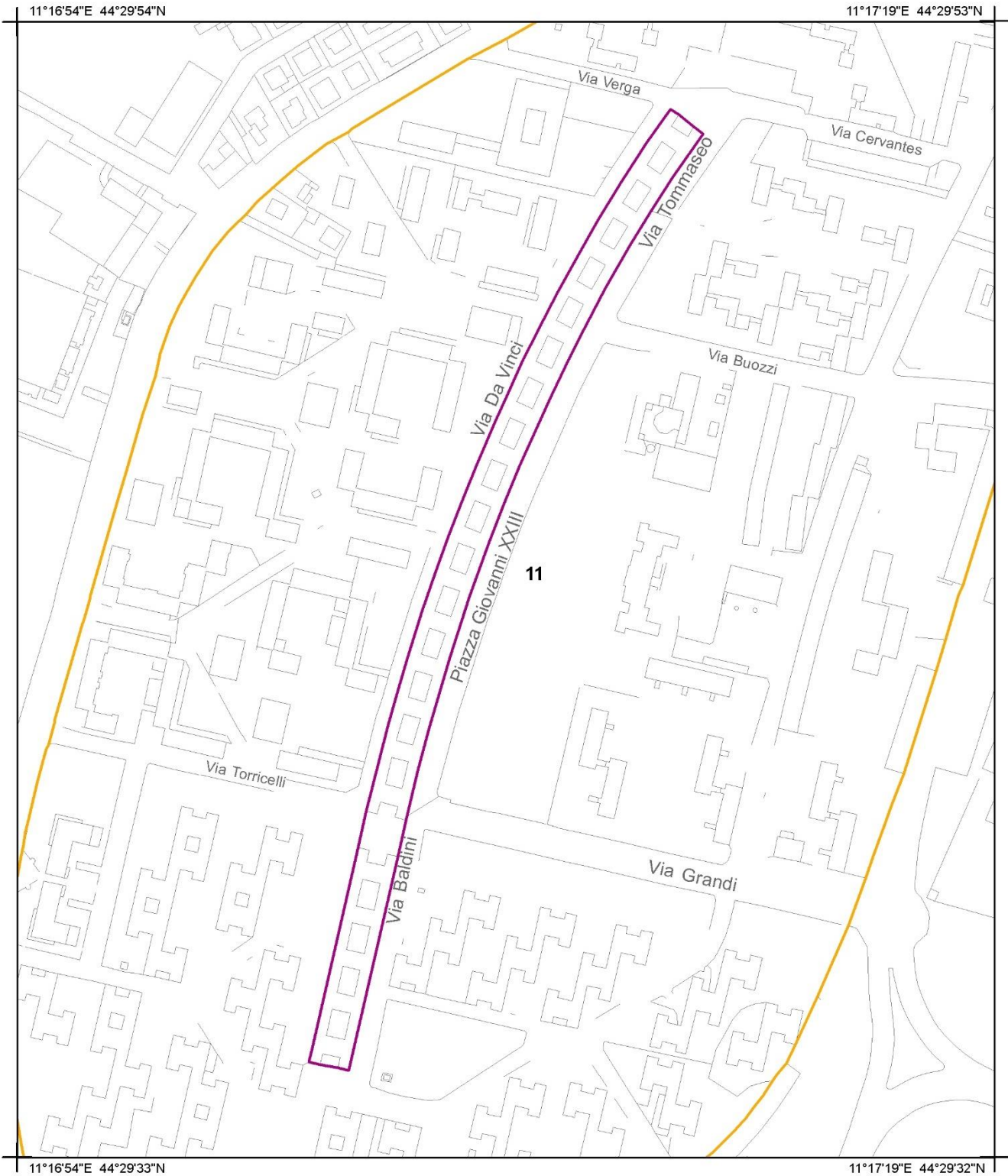
Base map: municipality of Bologna, CTC 2016




Date: February 2021





1.e.2.14. *Treno della Barca_Component 11*



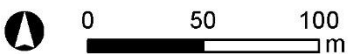
-  Nominated component (1,33 ha)
-  Buffer zone
-  Other components of the property

Print Scale: 1:3.000

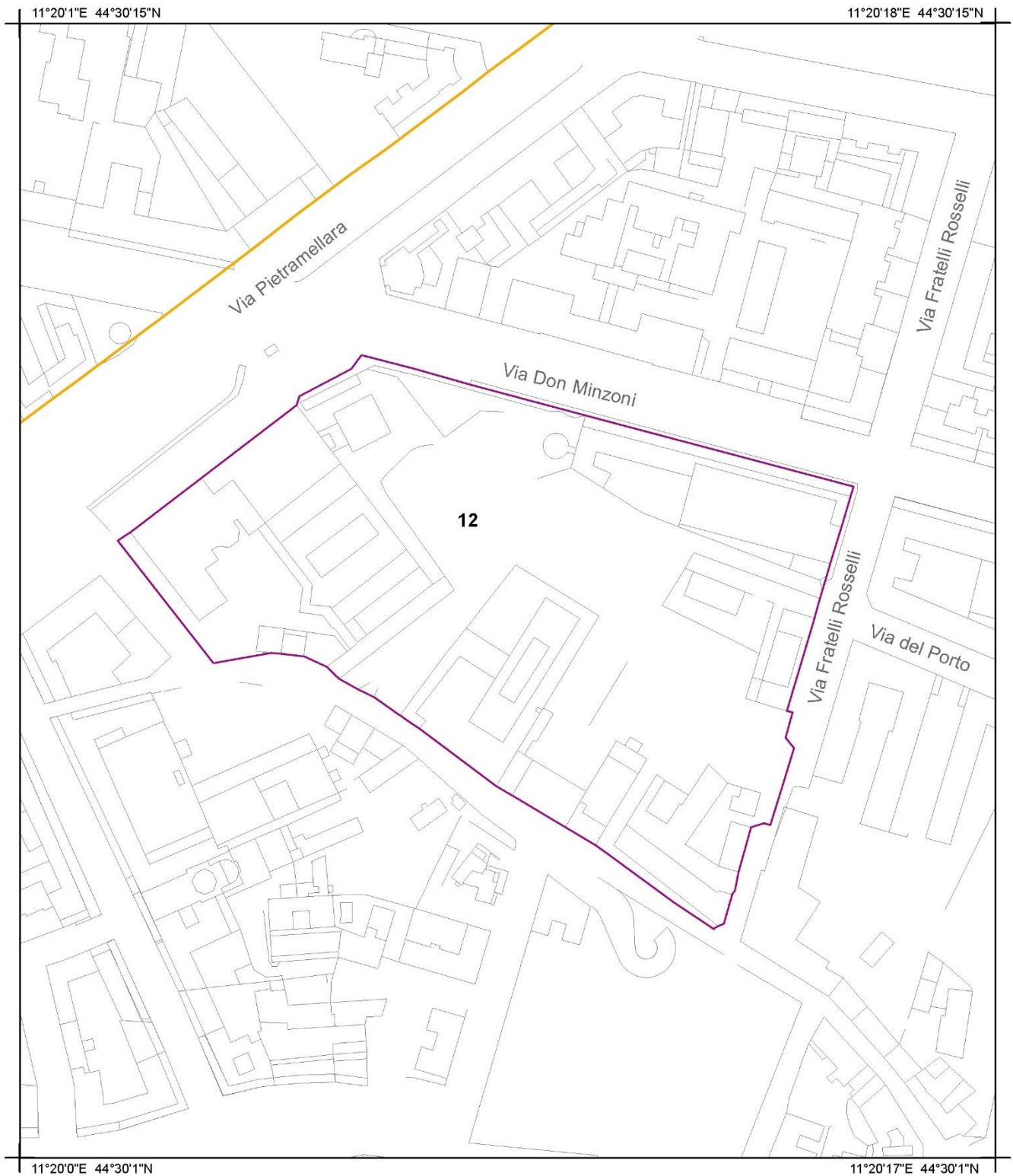
Projected coordinate system: UTM-WGS84




Base map: municipality of Bologna, CTC 2016

Date: February 2021



1.e.2.15. MamBo_Component 12



-  Nominated component (3,25 ha)
-  Other components of the property
-  Buffer zone

Print Scale: 1:2.000

Projected coordinate system: UTM-WGS84

Base map: municipality of Bologna, CTC 2016

Date: February 2021

