

STATE OF CONSERVATION REPORT

EPHESUS (Turkey) (1018rev)

1. **Executive Summary of the report**

This report on the state of conservation of the Ephesus World Heritage Site responds to the World Heritage Committee's decision 43 COM 7B.91.

Regarding the preparation of the revised management plan of Ephesus, the members of the Advisory Board and Coordination and Supervision Board have been reappointed; the first meetings of these boards have been held; a protocol has been signed between Selçuk Municipality and İzmir Promotion Foundation; a planning team has been established and information gathering process for the plan has been initiated. However, there has been no concrete progress on the preparation of the revised Management Plan of Ephesus due to COVID-19 pandemic.

The effectiveness of the Interaction Transition Zone and Forestry Act to protect the Outstanding Universal Value (OUV) of the property will be explained in the revised management plan and the protective designation of the entire buffer zone will be considered during the revision process of the plan.

The cable car project was cancelled on October 2, 2019. The project that modernizes and rehabilitates the entrances at the Lower Gate (Port Gate), Upper Gate and the Seven Sleepers Gate has been approved by the İzmir No: I Regional Council for Conservation of Cultural Heritage but the implementation has not started yet.

The restoration of the Ephesus Ancient Theatre (Great Theatre) and the Gate of Persecution of the Basilica of St. John of Ephesus is ongoing. The Design of the Ephesus Old Military Office Building as the Artemis Temple Visitor Centre and the Artemis Temple Landscaping Project has been approved by the İzmir No: I Regional Council for Conservation of Cultural Heritage but the implementation has not started yet.

2. **Response to the Decision of the World Heritage Committee**

During the 43rd session (Decision: 43 COM 7B.91), the World Heritage Committee requested the following works to be carried out for Ephesus. The works conducted about each request have been stated below.

b) Requests the State Party to submit the draft revised Management Plan to the World Heritage Centre, for review by the Advisory Bodies, as soon as it becomes available;

As mentioned in the previous reports, in accordance with the related legislation in Turkey, comprehensive revision of a management plan is conducted every 5 years, following its approval. The five-year implementation period of the management plan of Ephesus expired on September 11, 2019.

With the amendment in Cultural and Natural Heritage Conservation Law numbered 2863 in 2016, the authority to prepare site management plans for all heritage sites in Turkey has been granted to the Ministry of Culture and Tourism. Therefore, a cooperation protocol was signed between Selçuk Municipality and the Ministry of Culture and Tourism on November 16, 2018 in order to grant the authority to prepare

the management plan of Ephesus to Selçuk Municipality and define other responsibilities for the revision of the management plan. Thus, the revision process of the management plan was initiated.

In line with the protocol, the members of the Advisory Board and Coordination and Supervision Board were reappointed by the Ministry on September 28, 2019 and the first meetings of these boards were held on December 13, 2019. At the meetings, the road map for the revision process of the management plan was defined and in addition to the issues mentioned in the monitoring report of the management plan, which had been prepared by the Ministry of Culture and Tourism together with the site manager, the issues raised in Decision 43 COM 7B.91 were emphasized to be taken into consideration while revising the plan. Furthermore, it was emphasized that the revised management plan should include monitoring and research programmes; be more implementable and compatible with the needs of the site; and present, evaluate and manage the historical continuity and holistic value between the four components of the property.

Within the scope of the revision process of the management plan of Ephesus, a protocol has been signed between Selçuk Municipality and İzmir Promotion Foundation, which is affiliated to the Greater Municipality of İzmir and also a member of the Advisory Board and Coordination and Supervision Board, and a planning team has been established in line with the related regulation.

In addition to these, information has been requested from all institutions and organizations operating within the site management area and carrying out plans, projects or infrastructure works, and the views of the institutions, already been identified as stakeholders, on the management plan have been requested. The preparation of the Current Situation Analysis Report and the Assessment Report of the Current Management Plan continues by taking into consideration the human and financial resources.

The revision process of the management plan has been scheduled. However, due to COVID-19 pandemic, there hasn't been much progress in the revision of the management plan. The revised management plan will be shared with WHC and ICOMOS once it is approved by the Coordination and Supervision Board.

- c) **Also requests the State Party to include within the revised Management Plan a summary statement about the effectiveness of the set of measures to achieve integrated protection for the property; in particular, to provide a clear explanation of the effectiveness of particular measures, especially the Interaction Transition Zone and Forestry Act, to protect the Outstanding Universal Value (OUV) of the property;**

The effectiveness of particular measures, especially the Interaction Transition Zone and Forestry Act, to protect the Outstanding Universal Value (OUV) of the property will be explained in the revised management plan.

- d) **Further requests the State Party to clarify, within the revised Management Plan, the protective designation of the entire buffer zone, in particular those areas, which currently appear to have no protective designation;**

The protective designation of the entire buffer zone, in particular those areas, which currently have no protective designation will be considered during the revision process of the management plan.

- e) **Takes note of the information about the disapproval of the cable car project by the Regional Conservation Council and requests furthermore the State Party to keep the World Heritage Centre informed on any developments regarding this project, and submit to the World Heritage Centre, for review by the Advisory Bodies, the details and results of the Heritage Impact Assessment (HIA), including a section on the potential impacts of any newly submitted project proposal on the OUV of the property, before any irrevocable decisions are taken concerning this project;**

The contract signed on January 1, 2017 between Selçuk Municipality and the contractor company for the implementation of the cable car project, was cancelled on October 2, 2019. The municipality did not carry out any implementation at the site regarding the cable car project until the cancellation date of the contract and is not planning to implement a cable car project at the site in the future.

- f) **Requests moreover the State Party to provide all relevant information related to the project that modernizes and rehabilitates the entrances at both gates, including a Heritage Impact Assessment, in conformity with Paragraph 172 of the Operational Guidelines;**

The projects prepared within the scope of **Ephesus Ancient City New Visitor Centre and Landscaping Project** were approved by the İzmir No: I Regional Council for Conservation of Cultural Heritage, with the decisions dated 27.07.2017, numbered 6342 and dated 04.10.2018, numbered 8067 (Annex 1).

The project has been prepared for the Lower Gate (Port Gate), Upper Gate and the Seven Sleepers Gate that will provide access to the ancient city of Ephesus. The location of the Upper Gate and the Seven Sleepers Gate will not change. However, the Lower Gate is planned to be built in a new area.

The Lower Gate (Port Gate) is the main entrance gate of the ancient city of Ephesus. This gate is planned to include 3 building complexes: Visitor Centre (2456 m²); Site Management and Service Building (352 m²); Market Area and Market Area Additional Service Building (1383 m²). There will be 64 shops in the market area. In addition to these, a cafeteria is planned within the project (Annex 2).

The Upper Gate is the secondary gate providing entrance to ancient city of Ephesus. The project includes visitor centre buildings and a car park located on the opposite sides of the highway reaching the ancient city. Total building area in the project is 862 m² (Annex 3).

Although the Seven Sleepers area is outside the Ephesus Ancient City, it is an archaeological area with a high number of visitors. There is currently no visitor centre in this area. The Seven Sleepers Gate project includes a visitor centre and a car park located on the opposite sides of the dirt road that provides access to the site. Total building area in the project is 377 m² (Annex 4).

In accordance with the above-mentioned decisions of the İzmir No.1 Regional Council for Conservation of Cultural Heritage, a georadar study will be carried out at the areas

of visitor centres and car parks, before they are built. The construction work will start after the result of the georadar study is evaluated by the aforementioned Council.

3. **Other current conservation issues identified by the State(s) Party(ies) which may have an impact on the property's Outstanding Universal Value**

There are no other conservation issues identified by the State Party, which may have an impact on the Outstanding Universal Value of the property.

4. **In conformity with Paragraph 172 of the Operational Guidelines, describe any potential major restorations, alterations and/or new construction(s) intended within the property, the buffer zone(s) and/or corridors or other areas, where such developments may affect the Outstanding Universal Value of the property, including authenticity and integrity.**

The survey, restitution and restoration projects prepared within the scope of the **Restoration of the Ephesus Ancient Theatre** (Great Theatre) were approved by the Izmir No.1 Regional Council for Conservation of Cultural Heritage, with the decision dated 10.05.2017 and numbered 5978 (Annex 5).

Within the scope of the restoration work, it is planned to protect the original parts of the structure; to clear the structure from poor-quality repairs and additions; to repair, strengthen and reinforce the structure where necessary by using materials compatible with the original material and scientific methods. The main principle in restoration interventions has been determined as the “**minimum intervention**” required, to preserve the authenticity of the ancient theatre.

In August 2018, before the restoration work started, firstly, stone and mortar samples were taken from the area and material analysis was made. Furthermore, the dismantlement of poor-quality cement mortar based seating steps in the northern part of the theatre has been completed. An excavation was conducted at the entrance of the *Vormitorium* in June, 2019 under the supervision of the Excavation Directorate and Ephesus Museum.

The interventions made in the seating steps of the *Cavea*, which were dismantled and cleared of poor-quality cement mortars, are carried out according to the intervention plan approved by the Izmir No.1 Regional Council for Conservation of Cultural Heritage, with the decisions dated 16.04.2020, numbered 10682 and dated 27.08.2020, numbered 11174. Three types of intervention have been decided for the seating steps of the *Cavea*:

1. In order to evaluate the integrity of the interventions to be made in the sub-structures of the seating steps in the cavea, the sections emerging after the dismantling, first of all, completion with a little stone material,
2. Carrying out rubble stone implementations in sections consisting of large rough cut stones (This implementation has been completed.),
3. Completing the sections with little or no rough cut stone density with rough cut stone (This implementation has started.).

Within the scope of the study, it is aimed to complete reinforcement of the parados walls on both sides of the N1 entrance located in the northern part of the theatre having static problems; restoring the dismantled seating steps and the stairs between them in the same part of the theatre and a floor covering work in the orchestra pit by April, 2021. Concrete completions that were made in the orchestra pit in the previous years and thought to damage the structure were removed, and sample implementations were made by taking the opinions of the Excavation Directorate and the Scientific Committee regarding the intervention to be made. All the above-mentioned interventions are carried out in line with

the opinions of the Scientific Committee, after obtaining the approval of the related Conservation Council.

The Design of the Ephesus Old Military Office Building as the Artemis Temple Visitor Centre and the Artemis Temple Landscaping Project was approved by the Izmir No.1 Regional Council for Conservation of Cultural Heritage, with the decision dated 13.12.2018 and numbered 8456 (Annex 6).

The old Military Office Building is planned to be repaired and used as a visitor centre. There will be exhibition areas on the ground floor and administrative office spaces on the upper floor. Visitors will be informed about the temple at the visitor centre.

Access to the Temple of Artemis is provided from the Selçuk-Kuşadası road, where the former military office building is located. At the entrance of the temple area, visitor centre units are designed, as steel structures. These units are: a ticket booth and a security room (36 m² in total) under 157 m² eaves; a cafeteria (62 m²) under 122 m² eaves and a children's activity area (30 m²) at the back of the visitor centre.

In line with the project, implementations in the entrance area will be carried out in accordance with the ground level and existing building masses, and the flooring system and material will be made compatible with the purpose of use. The existing ground level will only be changed at the entrance of the archaeological site, where it will be lowered in order to facilitate the access of disabled people into the site.

In the children's activity area, conduction of a partial excavation has been suggested to build a gathering area in circular form and a project has been prepared for a sandbox of 8x6.5 m and a steel shelter.

In addition to these, a viewing terrace with a steel construction bearing, which will also include a model of the temple, has been planned for visitors to perceive the Temple of Artemis. This viewing terrace will be built by taking advantage of the existing differences in the ground level.

Since there has been a problem of ground water rise in the area since ancient times, it is planned to turn the existing organic-form ground level around the temple to a visitor route by filling it approximately 40-50 cm and to improve the appearance by stabilizing the sections of sloping land around the temple with green slope stabilization. The visitor route surrounding the temple is connected to the visitor centre square, in the area where the cafeteria is located. On this route, semi-open exhibition areas will be created where the stone artefacts scattered in the area can be preserved and exhibited. These exhibition areas will also be constructed by taking advantage of the existing differences in the ground level.

The car park has been planned in the southeast of the area, and a 3.30x3.30 m ticket booth is planned to be built for parking control.

Within the scope of the **Restoration of the Gate of Persecution of the Basilica of St. John of Ephesus**, the survey, restitution and restoration projects prepared for the Gate of Persecution, which is the main entrance gate of the St. John Basilica area and the outer walls of Ayasuluk Castle, and for the outer walls on both sides of the Gate, were approved by the Izmir No.1 Regional Council for Conservation of Cultural Heritage, with the decision dated 30.07.2015 and numbered 3465. The restoration work, which started on October 4, 2019, continues. In the study, care is taken to preserve the authenticity of the structure and, accordingly, to use materials compatible with the original material (Annex 7).

Within the scope of the work, vegetation on the fortress walls was removed before the implementation; the filling on the K02 tower having safety risks was removed and the covering stones were repaired and placed again. In addition to this, the non-authentic vault on the K02 tower was dismantled and rebuilt by placing wooden struts inside. Water insulation was also made on the tower and it was re-covered with the original natural stone available on site. The gaps observed in the tower wall were filled with hydraulic lime-binder and fiber-reinforced mortar injection, as specified in the approved restoration project, with a static justification.

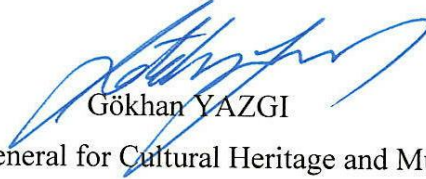
After these implementations, joints were opened on the walls of the K03 tower and the revised restoration project prepared for the detail of the stone covering to be implemented in the section adjacent to the tower was approved by the Izmir No.1 Regional Council for Conservation of Cultural Heritage, with the decision dated 15.09.2020 and numbered 11257. The implementations continue in this section.

5. Public access to the state of conservation report

The full report can be uploaded for public access on the World Heritage Centre's State of Conservation Information System (<http://whc.unesco.org/en/soc>).

6. Signature of the Authority

0.1/12/2020

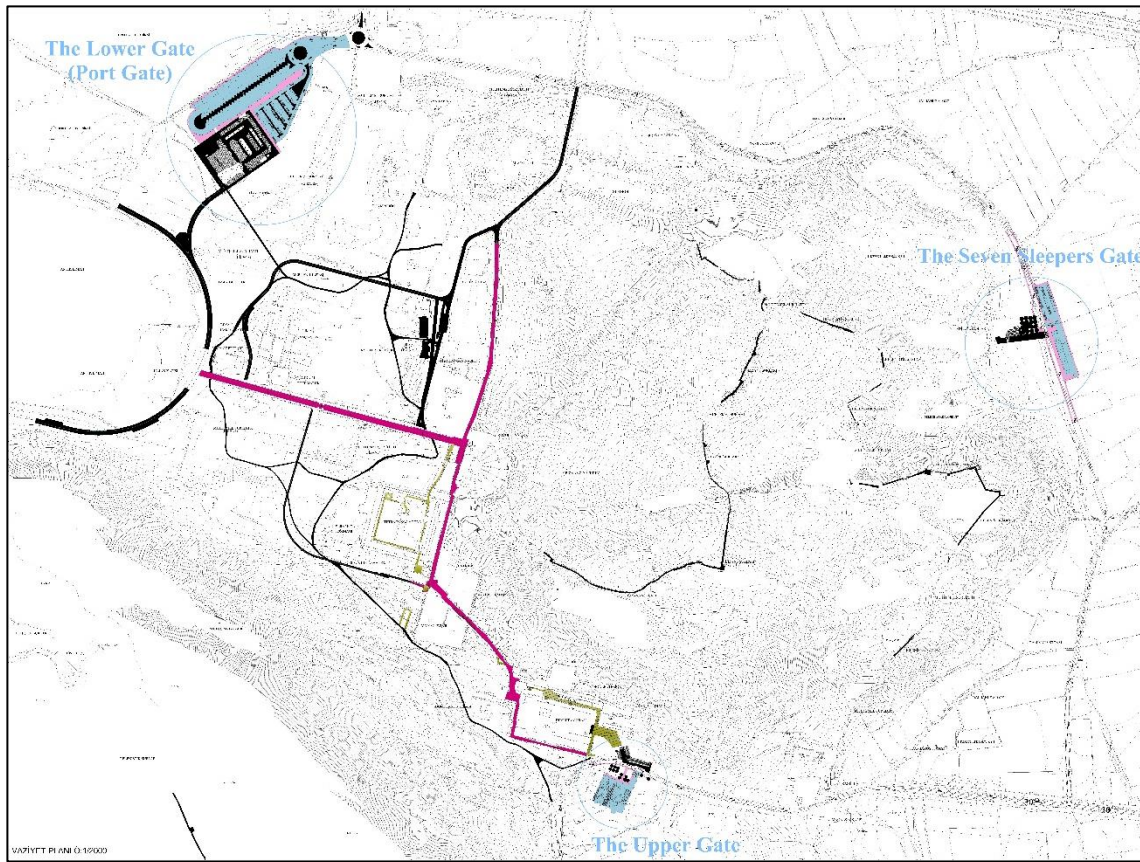


Gökhan YAZGI

Director General for Cultural Heritage and Museums

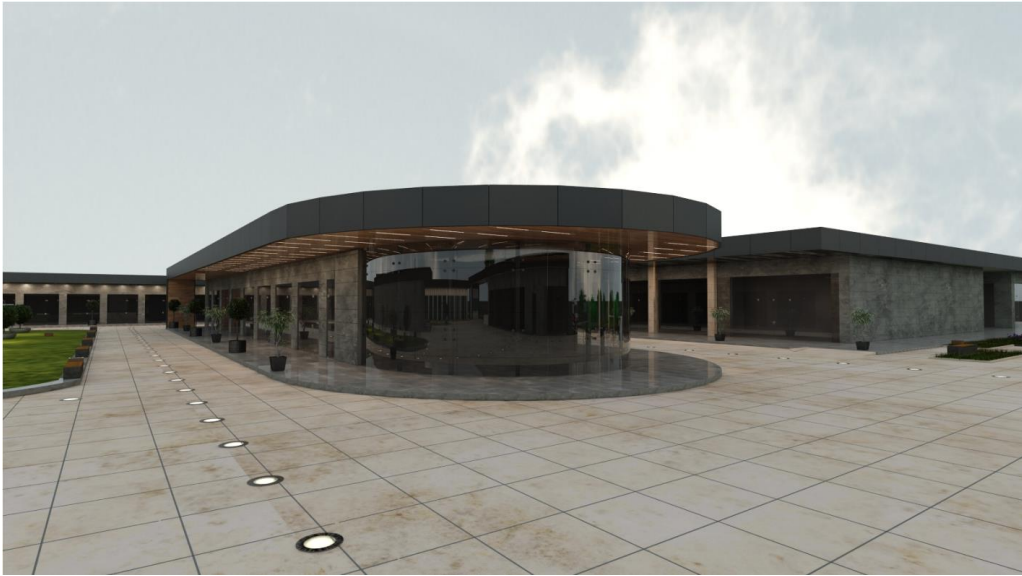
ANNEX 1

EPHESUS ANCIENT CITY NEW VISITOR CENTRE AND LANDSCAPING PROJECT



[illegible]

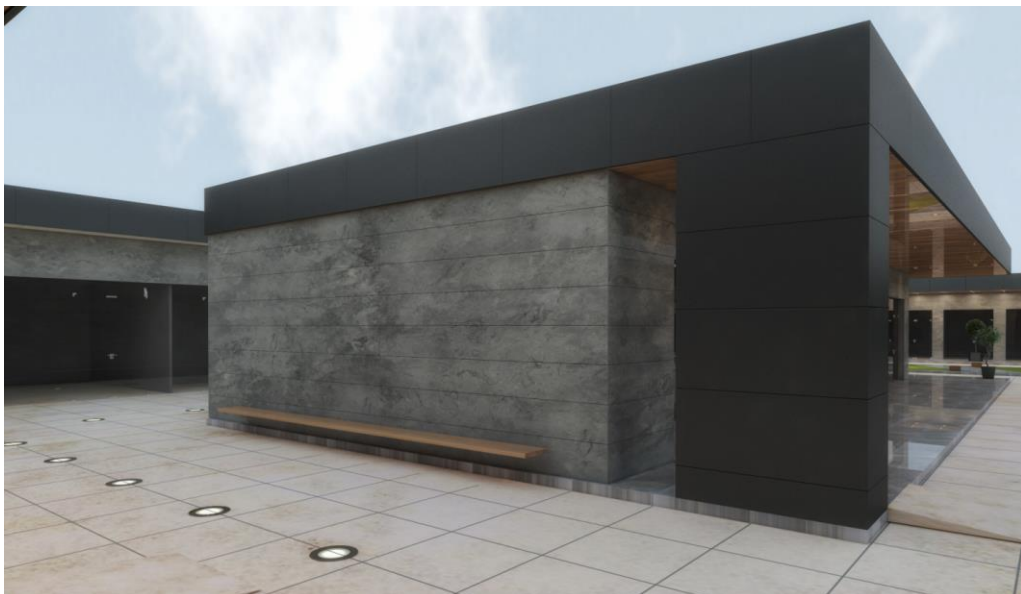


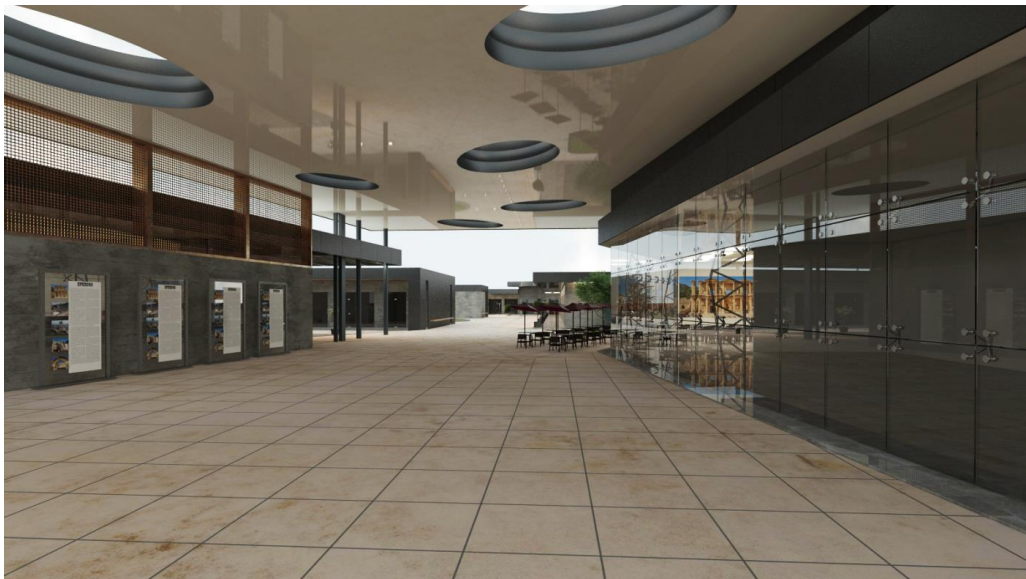
















ANNEX 3

THE UPPER GATE



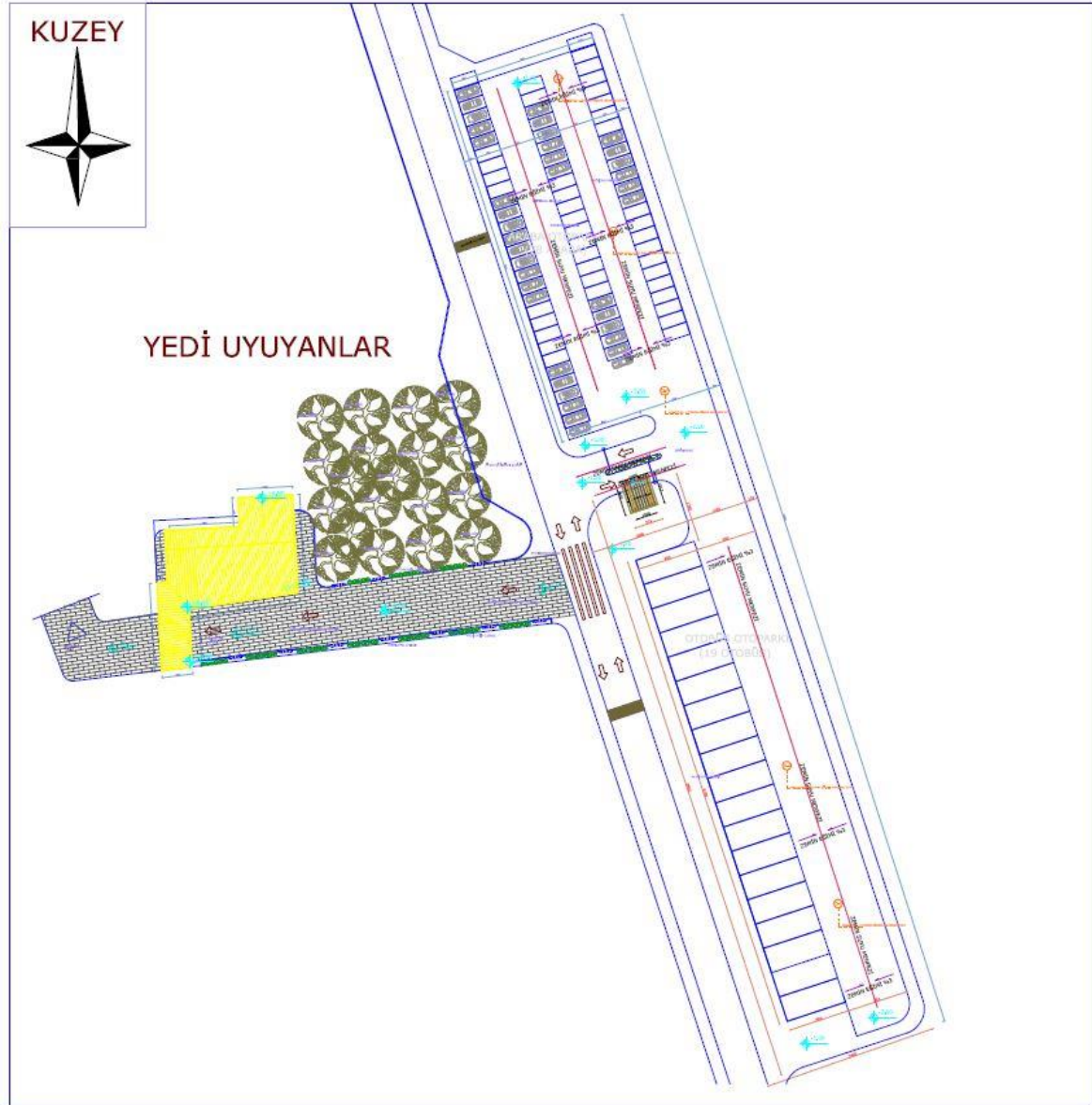




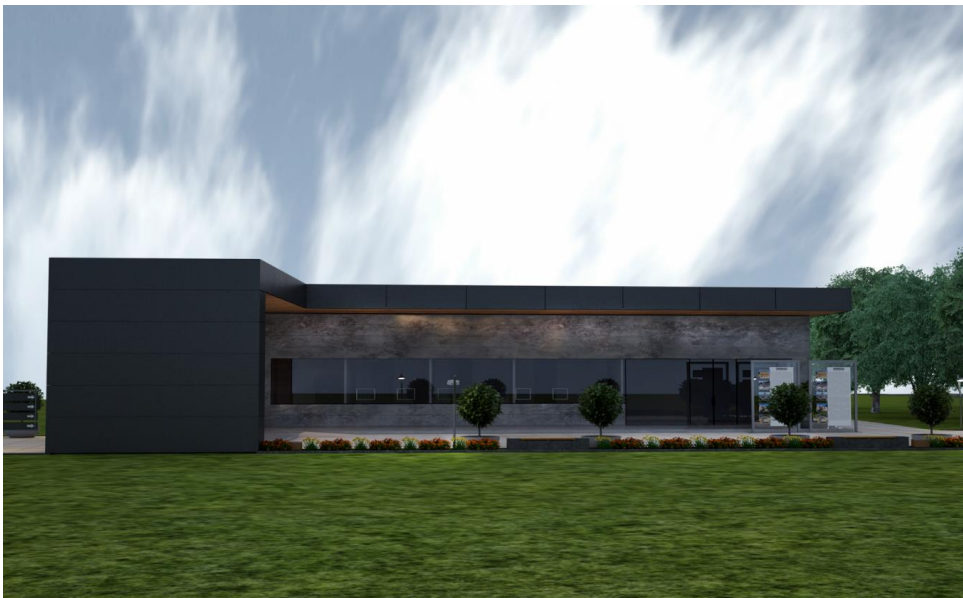




ANNEX 4
THE SEVEN SLEEPERS GATE











ANNEX 5
THE RESTORATION OF THE EPHEBUS ANCIENT THEATRE



The aerial photo of the Ephesus Ancient Theatre dated 14.07.2019 (Google Earth)



The northern part of the Ephesus Ancient Theatre



The stability problem in the parados walls



N2 Vormitorium – Exit to middle diazoma



Rubble stone implementations in the sections consisting of large rough cut stones



Rough cut stone implementations in the sections with little or no rough cut stone density



The restoration work carried out at the Ephesus Ancient Theatre

ANNEX 6

THE DESIGN OF THE EPHESUS OLD MILITARY OFFICE BUILDING AS THE ARTEMIS TEMPLE VISITOR CENTRE AND THE ARTEMIS TEMPLE LANDSCAPING PROJECT







ANNEX 7

THE RESTORATION OF THE GATE OF PERSECUTION OF THE BASILICA OF ST. JOHN OF EPHESUS



The Gate of Persecution of the Basilica of St. John



The Gate of Persecution of the Basilica of St. John and the outer walls on its both sides