

ICOMOS

INTERNATIONAL COUNCIL ON MONUMENTS AND SITES
CONSEIL INTERNATIONAL DES MONUMENTS ET DES SITES
CONSEJO INTERNACIONAL DE MONUMENTOS Y SITIOS
МЕЖДУНАРОДНЫЙ СОВЕТ ПО ВОПРОСАМ ПАМЯТНИКОВ И ДОСТОПРИМЕЧАТЕЛЬНЫХ МЕСТ

Our Ref. GB/AA/1619-Add.Inf_1

Charenton-le-Pont, 24 September 2019

H. E. Mr Ibrahim Albalawi
Permanent Delegation of the Kingdom of Saudi
Arabia to UNESCO
Maison de l'UNESCO
1, rue Miollis
75732 PARIS Cedex 15

World Heritage List 2020 – ICOMOS Technical Evaluation Mission
Cultural Rock Arts in Himā Najrān (Saudi Arabia)

Dear Ambassador,

ICOMOS is currently assessing the nomination of “Cultural Rock Arts in Himā Najrān” as a World Heritage site and an ICOMOS evaluation mission is currently visiting the property to consider matters related to protection, management and conservation, as well as issues related to integrity and authenticity.

In order to help with our overall evaluation process, we would be grateful to receive further information to augment what has already been submitted in the Nomination Dossier.

Therefore, we would be pleased if the State Party could consider the following points and kindly provide additional information:

Integrity and Authenticity

ICOMOS noted that recent graffiti are considered by the State Party as the continuation of a living tradition, but also sometimes as a form of vandalism (pages 18 and 50 of the nomination dossier). ICOMOS would be pleased if the State Party could provide additional information on how recent graffiti are differentiated from vandalism acts and continuation of a tradition.

Factors affecting the property

The nomination dossier mentions that some of the large blocks of rock were used for target practice of firearms (p.50). ICOMOS would be pleased if the State Party could provide additional information on the measures in place to prevent such practices, particularly in the non-fenced component parts and in the buffer zone.

Boundaries

ICOMOS would be pleased if the State Party could provide additional information on the rationale for the delineation of the boundaries of the component parts and of the buffer zone. Regarding the buffer zone boundaries, ICOMOS would be interested to receive information on the reasons of the proximity of the buffer zone delineation and the boundaries of component 1.

Protection and Management

According to the nomination dossier, three of the component parts are fenced, equipped with signage and protected, while the fencing of the other three components is planned. ICOMOS would be pleased if the State Party could provide additional information on the status of the fencing and signage of the remaining three component parts of the nominated property.

According to the Management Plan, "The new Najrān Museum, nearing completion at the time this MP was prepared [...] will play an important role in the implementation of MP, acting as a gateway to the sites of the Cultural Rock Arts in Ḥimā Najrān from the regional capital and providing key educational services in support of the WHS" (p.16). ICOMOS would be pleased if the State Party could provide additional information on the status of the new Najrān Museum.

ICOMOS would be pleased if the State Party could provide additional information on the status of implementation of the Management Plan.

ICOMOS would be pleased if the State Party could provide additional information on whether the name of the property relates or refers to the "hima" traditional system of protection and management. If yes, ICOMOS would be pleased if the State Party could provide information on the hima system and how it works, particularly in relation to the nominated property.

Interpretation, presentation and Visitors' management

According to the nomination dossier, "further site facilities are still to be decided and established, including formed paths within core areas, especially at Najd Khayrān (wādī Saad 7), and possibly elevated ramps and viewing platforms at selected locations. It may also be decided to establish temporary shade structures as required" (p. 62). ICOMOS would be pleased if the State Party could provide additional information on the status of these facilities.

According to the nomination dossier, Najd Khayrān (wādī Saad 7) is to be developed for tourism. Walkways and viewing platforms will be installed as appropriate to suppress dust and to enhance visiting experience" (p.50). ICOMOS would be pleased if the State Party could provide additional information on the status of this plan.

ICOMOS appreciates that the timeframe for providing this additional information is short. Brief responses are required at this stage, and can be discussed further with the State Party if needed during the ICOMOS World Heritage Panel process.

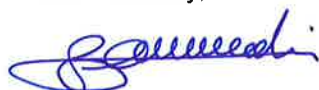
We look forward to your responses to these points, which will be of great help in our evaluation process.

We would be grateful if you could provide **ICOMOS** and the **UNESCO World Heritage Centre** with the above information by **Friday 25 October 2019 at the latest**.

Please note that the State Party shall submit two copies of the additional information to the UNESCO World Heritage Centre so that it can be formally registered as part of the Nomination Dossier.

We thank you in advance for your kind cooperation.

Yours faithfully,



Gwenaëlle Bourdin
Director
ICOMOS Evaluation Unit

Copy to Saudi Commission for Tourism and National Heritage (SCTH)
UNESCO World Heritage Centre

بِسْمِ اللَّهِ الرَّحْمَنِ الرَّحِيمِ

DELEGATION PERMANENTE
DU ROYAUME D' ARABIE SAOUDITE
AUPRES DE LUNESCO
PARIS



المملكة العربية السعودية
الوفد الدائم لدى اليونسكو
باريس

Ref: 2491

10 October, 2019

Attention: Gwenaëlle Bourdin
Director, ICOMOS Evaluation Unit

Dear Madam,

Reference: GB/AA/1619-Add. Inf_1, dated 24 September 2019.

In response to your additional Information request, we are pleased to present our response in the following:

Integrity & Authenticity

We distinguish between two forms of "graffiti": (a) those that are of historical significance and date from the last 1500 years, or represent a cultural continuation of ancient traditions; and (b) those that are recent, culturally unrelated and vandalistic expressions, such as additions by some visitors. As we noted in the nomination dossier, p. 37, "More customary forms of site vandalism, such as recent graffiti defacing rock art or inscriptions, are strikingly absent throughout the many sites".

Factors Affecting the Property

The use of large rocks for target practice with fire arms was indeed a problem in the past, up to the 1960s. However, this occurred before the area became protected by the State and the practice has been discontinued. It is worth mentioning that, from a purely scientific perspective, the bullet impacts have been useful because some are known to have been created in the late 1950s and became convenient reference points for calibration in dating studies. Since the property has come under the control of the state authorities and has been subject to the Royal Decree for the protection of cultural heritage, there have been no such incidents. Indeed, the local community has become quite protective of the historical monument.



بِسْمِ اللَّهِ الرَّحْمَنِ الرَّحِيمِ

DELEGATION PERMANENTE
DU ROYAUME D' ARABIE SAOUDITE
AUPRES DE LUNESCO
PARIS



المملكة العربية السعودية
الوفد الدائم لدى اليونسكو
باريس

Boundaries

The rationale for the delineation of the boundaries we nominated was in part governed by the fenced-in exclusion zones established many years ago, and where these had not been established, by considerations of the area needed to best preserve the ambience and integrity of the site or site complex. All nominated sites are now completely fenced and protected and white concrete pillars mark the buffer zone boundary.

The buffer zone boundaries were determined based on “annexing” the largest possible number of rock art, inscription and archaeological site clusters of the still more extensive overall extent of the greater cultural zone. Those parts not included within the buffer zone are the least accessible, essentially in the mountains of jabal Al-Qāra and jabal Al-Kawkab. The western boundary of the buffer zone is of no concern; it runs mostly through terrain that is quite inaccessible. Hence its proximity to component 1 poses no danger.

Protection & Management

The remaining three component parts are also fenced-in now and signs have been placed at all of them.

The new Najran museum is almost completed and will be opened in a few months. All archaeological activities, protection, education and management of sites will be administered from the large museum office. The local community will play an important role in the protection, preservation and management of the sites and in facilitating tourism and guiding visitors on camels and horses. Tourist guides are already available now through local travel agents; others are to become available who will be archaeology graduates from the University of Najran.

In the Hima system, local people are involved in creating facilities for visitors, opening handicraft and coffee shops to enhance their local economy. It involves also finding jobs for young people as guides, shop keepers, providers of camels and horses, etc.



بِسْمِ اللَّهِ الرَّحْمَنِ الرَّحِيمِ

DELEGATION PERMANENTE
DU ROYAUME D' ARABIE SAOUDITE
AUPRES DE LUNESCO
PARIS



المملكة العربية السعودية
الوفد الدائم لدى اليونسكو
باريس

Interpretation, Presentation & Visitor Management

There is a plan to facilitate the access of visitors to see the rock art as closely as possible without endangering it, by creating pathways, elevated structures and shades on the sites, but this remains in the planning stage. Najd Khayrān (wādī Saad 7) is a most attractive and large site and special attention will be given to develop it as the major visitor's destination. These plans require considerable input from specialists to minimize impact on the site's integrity and ambience before construction can commence on the facilities. However, they will be completed before a major influx of visitors is to occur.

We trust that this answers your questions but would be pleased to provide any further information you may require.

Yours faithfully,

Dr.Ibrahim Albalawi

Ambassador, Permanent Delegate of the Kingdom of Saudi Arabia to UNESCO

CC: World Heritage Center, UNESCO



بسم الله الرحمن الرحيم

DELEGATION PERMANENTE
DU ROYAUME D' ARABIE SAOUDITE
AUPRES DE LUNESCO
PARIS



المملكة العربية السعودية
الوفد الدائم لدى اليونسكو
باريس

Ref: ICOMOS-18

Paris 27 February 2020

Attention Ms. Gwenaëlle Bourdin
Director, ICOMOS Evaluation Unit

Subject : Additional information concerning the nomination of the site of Rock Arts in Hima Najran .

Dear Madam,

In response to your letter (ref: GB/AS/1619/IP) dated the 20th of December 2020 asking for Additional information and clarifications concerning the Additional information concerning the nomination of the site of Rock Arts in Hima Najran in Saudi Arabia,

Please find attached the letter of Acting V.P for Antiquities and Museums addressed including the requested information. (C.D attached).

Please accept , dear madam, the assurances of my highest consideration.

H.E.Princess Haifa Bint Abdulaziz Al Mogrin

**Ambassador, permanent Delegate
Of the kngdom of Saudi Arabia
To UNESCO**

cc.WHC Director



In response to your letter of 20 December 2019 we offer the following information and clarifications:

Documentation

All the data obtained from the comprehensive archaeological surveys and by the rock art exploration teams of the Department of Antiquities and Museums are filed in the Antiquities Research Centre of the Saudi Commission for Tourism and National Heritage (SCTH) at its offices in Riyadh and in the archive of the newly built regional museum in Najran.

We apologize for failing to include the List of 551 rock art and rock inscription sites mentioned in the Nomination Dossier. It is now provided, as well as a map showing the locations of these sites.

Name of the property

'Himā Cultural Precinct' is the new title for the property, emphasizing that this property bridges the present and the past, with evidence of cultural continuity linking the desert Bedouins with their historical ancestors (as detailed in the Nomination Dossier).

Comparative analysis

Comparisons with Jubbah and Shuwaymis Neolithic rock art sites:

Saudi Arabia is one of the rock art-richest countries in the world. It is therefore not surprising that it comprises numerous exceptional bodies of rock art. Two of them, the petroglyph complexes at Jubbah and Shuwaymis in the Hail Region in the country's north have been inscribed on the World Heritage List in 2015. The principal justification for that inscription was that they are the finest examples of Neolithic rock art known in the world. The Hail site complexes are large by international standards, but are certainly not the largest known in the country, which the Himā Cultural Precinct indeed is.

No other Saudi site complexes approaches in size the massive statistics of the Himā complex being submitted. Most Himā sites have not yet been subjected to detailed scientific scrutiny, such as direct dating. Such work has so far involved several analytical methods in Saudi Arabia, including radiocarbon, microerosion, uranium-series and optically stimulated fluorescence analyses as well as colorimetric seriation.

The present application emphasizes qualities that are entirely different from those of the Jubbah and Shuwaymis properties. At Himā, the rock art component is only one of various remarkable features, the most important of which is the area's function as an integrated cultural precinct of exceptional continuity — although some of the rock art is of great antiquity and much of it is of high quality.

Jubbah is an isolated oasis in the Great Nafud Desert, next to the imposing sandstone stacks of Jabal umm Sinman. Dozens of petroglyph sites occur on this mountain and on several smaller ones nearby. The human and animal figures at Jubbah are huge, deeply carved in bas relief and very well preserved.

The rock art complex at Ḥimā north of Najran, as compared to Jubbah, houses tens of thousands of petroglyphs, and its most substantial library of Arabian rock inscriptions significantly exceeds those at Jubbah in number. Jubbah sites contain several Thamudic inscriptions but at Ḥimā those in South Arabic or Musnad-al-Janubi dominate, along with several early and more recent Arabic scripts. Most of the Ḥimā rock art sites are probably under 3000 years old, in contrast to the 6000-years-old Neolithic petroglyphs of Jubbah and Shuwaymis.

The main difference between Jubbah/Shuwaymis and Ḥimā is that the former properties were nominated primarily for their Neolithic rock art, of which they are the best examples in the world. Ḥimā is being nominated as a cultural precinct linking a massive corpus of prehistoric and historic rock art, of myriad rock inscriptions and archaeological remains with the very present role of the rock art and the outstanding historical significance of some of the inscriptions. It links a long past with the present and places Bedouin identity within its historical context.

Concerning the *internal comparisons* of the Ḥimā components, the six sites selected as core areas were chosen on the basis of historical significance and of being relatively accessible, representative examples of the overall corpus. It also needs to be considered that the buffer zone areas of low accessibility (i.e. Jabal Qara and Jabal al-Kawbab) remain inadequately explored.

Boundaries

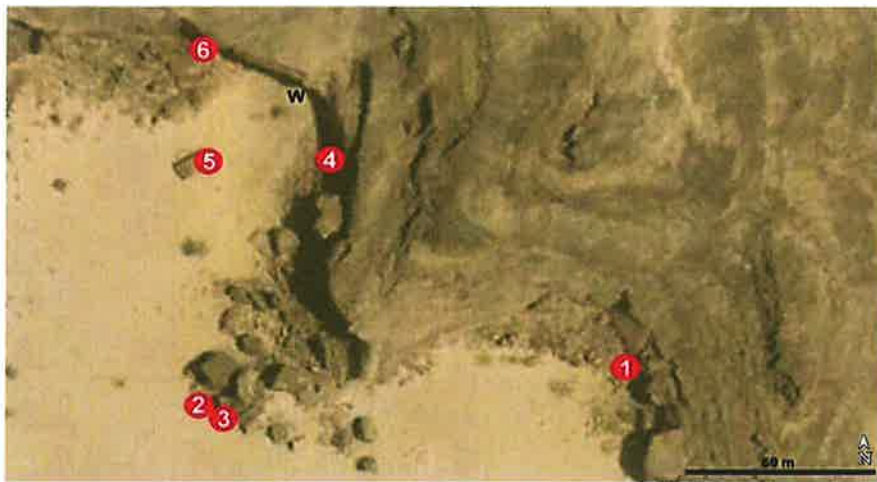
Jabal al-Kawbab is a large mountain that needs detailed documentation of sites and further studies. It would be added to the Ḥimā Cultural Precinct as serial component in the near future, perhaps in three to five years, together with parts of Jabal Qara.

Dividing the buffer zone into developed and undeveloped zones is based on the reality of Ḥimā village being close to key historical sites. The two zones are shown in Figure 3 of the Tourism Management Plan. The two core sites within the developed zone have been enclosed in steel fences for many years. All other sites are far from the sparse settlement area of the village of Ḥimā. Development within the developed zone will be subject to approval and will need to comply with traditional architectural practices, without impinging on the visual ambience of the two core sites.

Development in the undeveloped buffer zone will be limited to fencing, visitor paths, platforms and barriers, i.e. facilities to meet the needs of coping with visitor traffic and safety, and will be under the control of the SCTH. There are traditional Bedouin tent

settlements in a few locations in the undeveloped buffer zone, but no permanent structures exist or will be allowed in it.

Najd Khayran is the site selected as the primary location for tourism. Apart from fencing, this would involve the installation of minimal tourist facilities as seen at many other rock art sites on the WHL (e.g. Kakadu, Australia). Apart from being extensive in size, with its impressive cliff face escarpment, the site complex is relatively level and would lend itself to wheelchair access to several of its parts. It is therefore proposed to construct concrete paths from the entrance gate to rock art concentrations 2 and 3 and on to 4 and 5. Such paths have the additional benefit of suppressing dust development from people traffic.



Najd Khayrān site complex with main rock art concentrations shown.

Since there is limited shade available at this extensive site, it may be appropriate to install a sun-shade at the entrance gate. A traditional Bedouin tent may be installed in the desert near Najd Khayran, well away from the site, with toilet, coffee shop facilities for the visitors and a monitoring center. However, we emphasize that we remain undecided about these plans and would delete them if requested to do so.

Conservation and monitoring

Thank you for the opportunity to respond to these three conservation concerns. Bullet impact marks on rocks are relatively old, made between 40 to >100 years ago. Nowadays, through the work of the Department of Antiquities and Museums over several decades, people are well aware of the importance of their ancestor's cultural heritage. This practice of using rocks as targets has been discontinued completely.

Similarly, these attitudes have also led to a significant reduction in graffiti production. Moreover, the sites in the buffer zone have become very well protected and guarded by the rangers stationed at the information center in Ḥimā. These have two four-wheel Land Cruisers and take rounds every day to all the core sites and the buffer zone. As they are

local residents from the local tribes, they check the area any time of the day and even check any trespassers at night. Thus, the sites are very well monitored by local guards and local residents as they are aware of the cultural importance of the area.

The rock art will continue to be protected in accordance with Royal Decree No. M/26 through existing measures, considered visitor access, management and regular daily monitoring. Local guards regularly monitor the condition of and maintain fencing at the sites.

Local people and tribal Sheikhs are very excited about the potential registration of their ancestor's artwork and inscriptions on the World Heritage List. A meeting was held with all the Sheikhs of the local tribes and Dr Benjamin Smith in Hīmā municipality. The Sheikhs showed great interest and support to protect, preserve and guard the sites and welcome visitors or tourists with excellent facilities and local traditional hospitality.

Rubbish is removed every day by the local municipality. Saudi Arabia has an excellent garbage disposal system.

The new concrete structures around the wells and water channels will be removed if ICOMOS advise us to do so. We can remove these structures within one week and re-instate the previous conditions.



Concrete additions around the wells, to be removed on advice.



Old picture of Himā well.(1981)

Monitoring: In addition to already existed monitoring in the information center in the village of Himā, a monitoring center is to be established in a large Bedouin tent near the site of Najd al-Khayran (but out of sight of it), together with a coffee shop, toilet and resting facilities. The tent will show the Bedouin life style and interior of their tents, being a model of a real Bedouin tent. Concerning the timeframe, this could be erected within a few months after a decision is made.

Concerning trained staffing, Najran University Department of Archaeology based in Najran City is in the process of developing research and teaching in this field. A state-of-the-art Research Center for Rock Art Studies will be established. It will secure links with international partner institutions to support and facilitate the founding of the center. At present, a French team from CNRS and University of Paris is surveying and documenting archaeological, rock inscription and rock art sites in the Najran region. Staff from the Saudi Commission for Tourism and National Heritage and some students from the archaeology department of Najran University are participating in this project.

As soon as the rock art research center is established, we shall look for hiring specialized staff. Some students at King Saud University, Riyadh and University of Hail are in the process of completing their M.Sc and Ph.D in rock art. Perhaps in couple of years we may employ them in SETH.

Protection

The local Bedouins are fully aware of the importance of their cultural heritage, they do no harm to these sites and they look after them as their own personal interest. No stranger can now approach these sites without a guide or guard or formal permission from SETH office in Himā or Najran. In that sense, the traditional system of site custodianship has been implemented, and has already become an integral part of the management plan.



The SCTH Branch office in Najran will continue to play a major role in the protection and management of the sites. Guards posted at the information center are local residents of Himā. New guards will be appointed to work from the proposed Bedouin tent and the two parties will look after the sites in the core and buffer zones and even after Jabal al-Kawbab and other parts of eastern Jabal Qara.

Provision has been made in the Tourism Management Plan for the possibility of extending organized tours beyond the four core sites of the undeveloped zone. This has been stated as a tentative proposal, not as a firm plan, and the Submission Dossier and Management Plan have precedence over the considerations of tourism. It has been suggested that special tours might include unfenced sites and would be supervised rigorously, but if this proposal were to impede the potential listing of the property it would be withdrawn. It is simply considered that tourism will present a demand for such special tours, and in this instance we would prefer to be guided by the greater experience of ICOMOS.

الرقم : ٩٣٦٨

التاريخ : ١٤٤١/ ٦/ ٢٩

المرفقات : ٤



السياحة والتراث الوطني

الهيئة العامة للسياحة والتراث الوطني
Saudi Commission for Tourism & National Heritage

٧٠٠١٤٠٢٩٠٣



الهيئة العامة للسياحة والتراث الوطني
Saudi Commission for Tourism & National Heritage



الهيئة العامة للسياحة والتراث الوطني
Saudi Commission for Tourism & National Heritage

(٢٥٠)

الموضوع: الرد على استفسارات الأيكموس
عن الموقع المرشح في حمى نجران

حفظه الله

سعادة الامين العام للجنة الوطنية للتربية والثقافة والعلوم

السلام عليكم ورحمة الله وبركاته

أشير لكتاب مديرة وحدة التقييم في الأيكموس رقم (GB/AS/1619/IR) وتاريخ ٢٠١٩/١٢/٢٠م، والذي تضمن عدد من الاستفسارات حول الموقع المرشح للتسجيل في قائمة التراث العالمي "الرسوم الصخرية الثقافية في حمى نجران".

تجدون برفقه مشروع كتاب رد لمديرة وحدة التقييم بالأيكموس يتضمن المعلومات المطلوبة لتسليمها بشكل رسمي من قبل المندوبية للأيكموس الدولي في باريس قبل تاريخ ٢٨ فبراير ٢٠٢٠م.

ولسعادتكم تحياتنا.

نائب الرئيس المكلف للأثار والمتاحف

رستم بن مقبول كبيسي

وزارة الثقافة
Ministry of Culture

رقم القيد : 2453

التاريخ : 1441-06-29

مرفق : ذاكرة خارجية+33لفه

جهة الإحالة : اللجنة الوطنية للتربية والثقافة

والعلوم

ص ب ٦٦٦٨٠ الرياض ١١٥٨٦، المملكة العربية السعودية، هاتف ٨٨٥٥ ١١ ٨٨٠ ٩٦٦ + فاكس ٨٨٤٤ ١١ ٨٨٠ ٩٦٦ +
P O Box 66680, Riyadh 11586, Kingdom of Saudi Arabia, T: +966 11 8808855 F: +966 11 880 8844

info@scth.gov.sa www.scth.gov.sa

رقم الصادر : 1396

التاريخ : 1441-06-29

المرفقات : ظرف



سلمها الله

سمو المندوبة الدائمة للممكة لدى منظمة اليونسكو

السلام عليكم ورحمة الله وبركاته

إشارة لطلب مديرة وحدة التقييم في منظمة الأيكموس (مرفق نسخة منه) والمؤرخ في ٢٠ ديسمبر ٢٠١٩م، والمرسل للمندوبية الدائمة والمعطى صورة منه لنقطة الإتصال في منظمة اليونسكو المهندس/ بندر الملحق بهيئة السياحة والتراث والذي تضمن عدد من الاستفسارات حول موقع "الرسوم الصخرية الثقافية في حى نجران".

نفيدكم بأن الفريق المسؤول عن الملف قد قام بالإجابة على جميع متطلبات الأيكموس (مرفق كامل المستندات نسخة الكترونية على ذاكرة خارجية والأصول) لتكرم سموكم بتوجيه المعنيين بالمندوبية تزويد الأيكموس بها وذلك قبل تاريخ ٢٨ فبراير ٢٠٢٠م.

وتقبلوا سموكم تحياتي...

الأمين العام

هتان منيرين سمان

قطاع الآثار والمتاحف
 الإدارة العامة لتسجيل وحماية الآثار
 إدارة سجل الآثار

التاريخ : 1441/06/29
 العراق : 2020/02/23
 Mesfer H. Al-Oahdani (RP)
 مدير التقرير
 مسطر الخطيب



موقع أبار حمى زينبي بمحافظة نجران في منطقة نجران

The name of the archaeological site	رقم الموقع : 1106090045	اسم الموقع : أبار حمى زينبي
The name of the region	اسم المحافظة : نجران	المحافظة الإدارية : منطقة نجران
The coordinates	نوع الموقع : أثري	المورد عن الموقع :
The ownership (governmental or private)	عدد المرحل : 18 24923889 (N)	عدد المرحل : 44 45183889 (E)
The specific governmental ownership (e.g: SCTH)	تصنيف الموقع : موقع رئيسي	حماية : حكومي
The importance	إدارة الموقع : الهيئة العامة للسياحة	الحالة : متاحة
The high oboe the sea	الوضع المرحلي : قائم	السياسة المتبعة : الهيئة العامة للسياحة والآثار
The current function of the site	استعمال التور : عدم	الأهمية الأثرية : 100
Recorded damage	التراث العالمي : مرشح للتسجيل في قائمة التراث العالمي	الارتفاع : 0
Protection status	معلومات أخرى :	التوثيق الذاتي :
The settlement period	السياسة العامة : (مورد غير متوفر)	الأضرار :
Topography (mountain, wades, hills ...etc)	الخدمات المرفق :	الحماية : معزولة
available plans of the site	حلت تاريخي :	التقارير الأثرية :
	الاشتغالات الخطية :	خارطة الموقع :
	وصف الموقع :	المخططات : شوروية :

تعتبر أبار حمى زينبي الأثرية والصخرية من العصور النسيبة كمنطقة على طريق البحر بين جزان وأجزاء النسيبي من الجزيرة العربية كما أنها تشتهر ببعض التور القديمة التي تظهر على معسكرات الجيوش وأحداث المعارك التي تعود إلى عهد الآلاف من السنين. قُبار حمى ذات قيمة علمية وأثرية عالية فهي تحتمل من قبل الأثر في شبه الجزيرة العربية (زينة) وعدد من قديم الأثر في العالم. خلال مدة من 3500 قبل الميلاد ووجود ما لا يقل عن 2500 من التاريخ العرقي. تحتوي التور القديمة المتكثرة بنصف المسك العرقي والمنشآت على الأثار بوجاه أبار حمى عن وجود معسكرات الجيوش قبل عهد في المنطقة بالإضافة إلى ذلك ، هناك عدد قليل من التور من التور من 2500 قبل الميلاد ويعتقد أنها تعود إلى العصور القديمة التي وقع قبل

قطاع الآثار والمتاحف
الإدارة العامة لتسجيل وحماية الآثار
بجدة - مبنى الآثار

التاريخ : 1441/06/29

الموافق : 2020/02/23

معد التقرير : Mesfer H. Al-
Qahmani (RP)

مسطر التفتيش



موقع ليل حصى رخيصي بمحافظة نجران في منطقة نجران

التعليقات

Hirma wells.docx 1

The attachments of the report (allows the attachment is contain a detailed report of the archaeological site which includes: maps, pictures, more information). Also, if there is any previous studies, such as thesis, it would be attached here.

موقع معلومات تسجيل لوطني

قطاع الآثار والمتاحف
الإدارة العامة لتسجيل وحماية الآثار
إدارة سجل الآثار
التاريخ : 1441/06/29
الموافق : 2020/02/23
معد التقرير :- Mesfer H. Al-
Qahtani (RP)
مسفر القحطاني

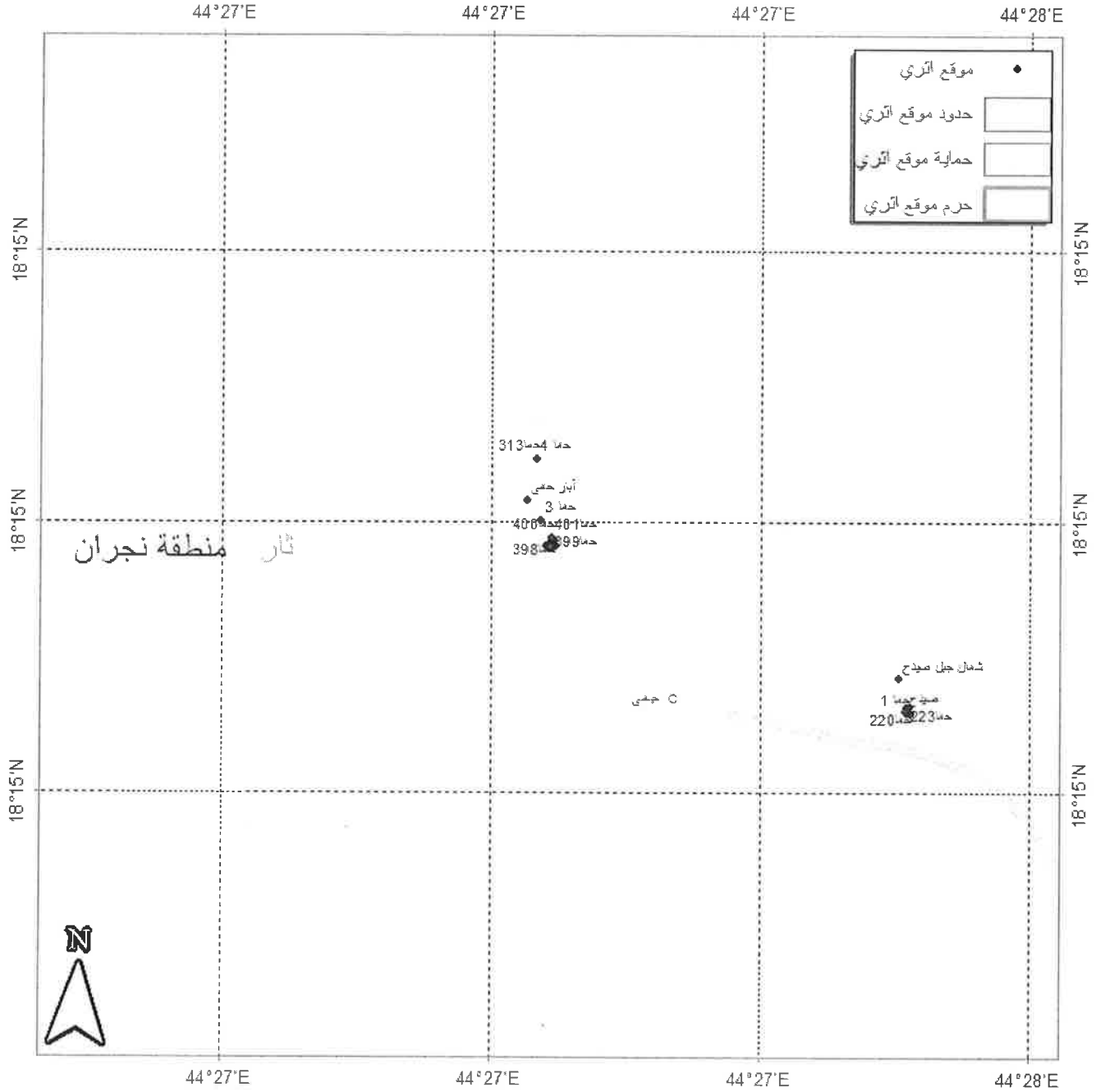
موقع آبار حمى رئيسي بمحافظة ثار في منطقة نجران



رقم الموقع :	1106009045	اسم الموقع :	آبار حمى رئيسي
اسم المحافظة :	ثار	المنطقة الإدارية :	منطقة نجران
نوع الموقع :	أثري	المرشد عن الموقع :	
خط العرض (N) :	18.24923889	خط الطول (E) :	44.45183889
تصنيف الموقع :	موقع رئيسي	الملكية :	حكومي
إدارة الموقع :	الهيئة العامة للسياحة	الحالة :	ممتازة
الوضع الراهن :	قائم	الجهة المشرفة :	الهيئة العامة للسياحة و الآثار
استقبال الزوار :	نعم	الأهمية الأثرية :	100
التراث العالمي :	مرشح للتسجيل في قائمة التراث العالمي	الارتفاع :	0
مسميات أخرى :		التوظيف الحالي :	للموقع
الطبيعة العامة :	(موارد مياه -بنر)	الأضرار :	
احتياجات الموقع :		الحماية :	مسور
حدث تاريخي :		الفترة الزمنية :	(عصور ما قبل التاريخ -العصر الحجري الحديث) و (عصور ما قبل التاريخ -العصر البرونزي) و (عصور ما قبل التاريخ -العصر الحديدي) و (الممالك العربية الوسيطة -غبيبر معروف)
الملتقطات السطحية :		طبوغرافية :	تلال
وصف الموقع :		المخططات :	المتوفرة

تشتهر آبار حمى بمواردها المائية والمعروفة منذ العصور القديمة كمحطه على طريق البخور بين نجران والجزء الشمالي من الجزيرة العربية. كما أنها تشتهر ببعض النقوش المهمة التي تخبرنا عن معسكرات الجيوش وأحداث المعارك التي تعود إلى عدة آلاف من السنين. فأبار حمى ذات قيمة عالمية رائعة عام، فهي تعتبر من أقدم الآبار في شبه الجزيرة العربية (وربما واحدة من أقدم الآبار في العالم) خلال عدة مراحل 3500لوجودتها ووجودها النشط لأكثر من 2500من التاريخ العربي. تُخبرنا النقوش الكبيرة المكتوبه باخط المسند الجنوبي والمنتشر على التلال بجانب آبار حمى عن وجود معسكرات الجيوش قبل عام في المنطقة، بالإضافة إلى ذلك ، هناك عدة نقوش من الشخصيات 2500عام. ولذلك فإنه تعتبر سجل محفور ممتاز ومحفوظ جيدًا للحدث الذي وقع قبل

موقع آبار حمى رئيسي بمحافظة نجران في منطقة نجران



قطاع الآثار والمتاحف
الإدارة العامة لتسجيل وحماية الآثار
إدارة سجل الآثار

التاريخ : 1441/06/29

الموافق : 2020/02/23

معد التقرير :- Mesfer H. Al-

Qahtani (RP)

مسفر القحطاني

موقع آبار حمى رئيسي بمحافظة ثار في منطقة نجران



المرفقات

Hima wells.docx

1

متموج معالم لسجد لوهني

قطاع الآثار والمتاحف
الإدارة العامة لتسجيل وحماية الآثار
إدارة سجل الآثار

التاريخ : 1441/06/29

الموافق : 2020/02/23

معد التقرير :- Mesfer H. Al-

Qahtani (RP)

مسفر القحطاني

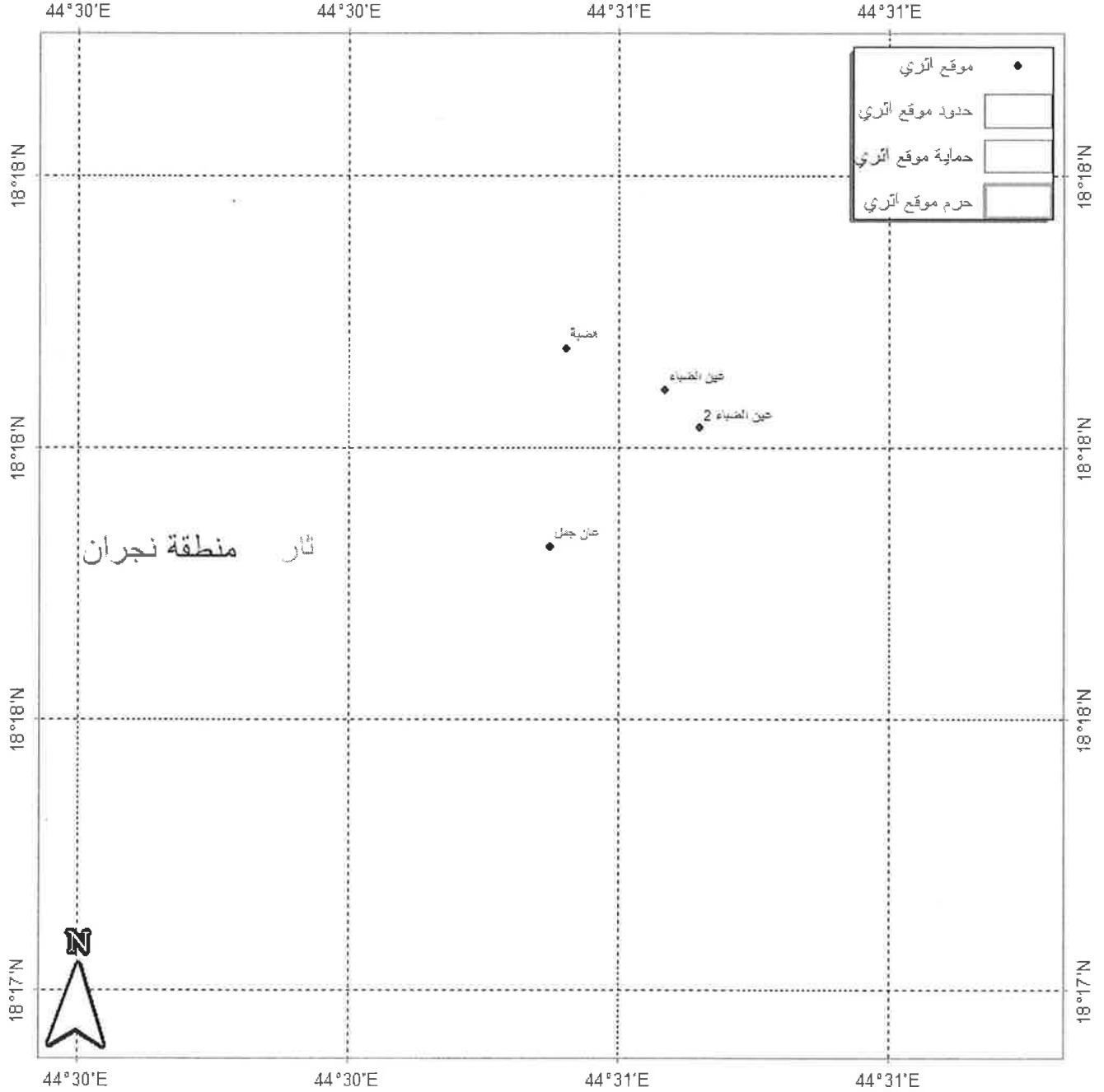
موقع عان جمل بمحافظة نجران في منطقة نجران



رقم الموقع :	1106002610	اسم الموقع :	عان جمل
اسم المحافظة :	نجران	المنطقة الإدارية :	منطقة نجران
نوع الموقع :	أثري	المرشد عن الموقع :	صالح آل مريح
خط العرض (N) :	18.29694444	خط الطول (E) :	44.51460000
تصنيف الموقع :	موقع رئيسي	الملكية :	حكومي
إدارة الموقع :	الهيئة العامة للسياحة	الحالة :	متوسطة
الوضع الراهن :	قائم	الجهة المشرفة :	الهيئة العامة للسياحة و الآثار
استقبال الزوار :	لا	الأهمية الأثرية :	100
التراث العالمي:	مرشح للتسجيل في قائمة التراث العالمي	الارتفاع :	0
مسميات أخرى :		التوظيف الحالي :	للموقع
الطبيعة العامة :	- (رسوم حيوانية -جمال) و (رسوم حيوانية أبقار) و (رسوم -وسوم صخرية) و (رسوم ادمية -رجال) و (رسوم ادمية -نساء)	الأضرار :	انهيارات صخرية
احتياجات الموقع :		الحماية :	مسور و مراقب اثار
حدث تاريخي :		الفترة الزمنية :	(عصور ما قبل التاريخ -العصر الحجري الحديث) و (عصور ما قبل التاريخ -العصر البرونزي) و (عصور ما قبل التاريخ -العصر الحديدي) و (الممالك العربية المبكرة -غير معروف) و
المنقطات السطحية :		طبوغرافية الموقع :	تلال و أودية
وصف الموقع :		المخططات المتوفرة :	

8.5 عان جمل عباره عن سلسلة من التلال الصخرية المنخفضة الممتدة من سفح جبل قارين الجنوبي الشرقي إلى الصحراء الرملية الواقعة على بعد حوالي ١٢ كم من شرق قرية حمى. ويكتسب الموقع أهميته من الإنتشار الكثيف للكتابات العربية القديمة على الواجهات الصخرية في أنحاء مختلفة من تلال عان جمل. نقش للكتابات العربية القديمة والفنون الصخرية المختلفة، من ضمنها المسند الجنوبي والثمودي والإسلامي ورسومات ٦٨٠ فقد تم حصر وتوثيق أكثر من للأبقار والخيول وحيوانات اخرى كثيرة

موقع عان جمل بمحافظة نجران في منطقة نجران



قطاع الآثار والمتاحف
الإدارة العامة لتسجيل وحماية الآثار
إدارة سجل الآثار
التاريخ : 1441/06/29
الموافق : 2020/02/23
معد التقرير :- Mesfer H. Al-
Qahtani (RP)
مسفر القحطاني

موقع عان جمل بمحافظة ثار في منطقة نجران



المرفقات

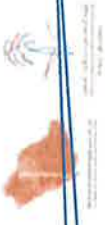
Ain Jamal.docx 1

قطاع الآثار والمتاحف
الإدارة العامة لتسجيل وحماية الآثار
بغداد - سبل الآثار

التاريخ : 1441/06/29
العراق : 2020/02/23

مسئول التقرير : Mesfer H. Al-Qahani (RP)
مسئول التخطيط :

موقع أبو حمى رئيسي بمحافظة نجران في منطقة نجران



The name of the archaeological site	رقم الموقع : 1106009045
The name of the region	اسم المحافظة : نجران
The coordinates	نوع الموقع : أثري خط العرض (N) : 18.24923889
The ownership (governmental or private)	صنيف الموقع : موقع رئيسي
The specific governmental ownership (e.g: SCTH)	إدارة الموقع : الهيئة العامة للسياحة والتراث الوطني
The importance	الوضع الأثري : قديم
The high above the sea	استقلال التلال : نعم
The current function of the site	التراتب العائلي : مرشح لتسجيل في قائمة التراث العالمي
Recorded damage	ملاحظات أخرى :
Protection status	التقييم العامة : (موقع - غير محمي)
The settlement period	أحداث الموقع : حدث تاريخي :
Topography (mountain, wades, hills ...etc)	الملاحظات الشخصية : Surface archaeological artifacts (e.g: pottery, stone tools ... etc)
available plans of the site	وصف الموقع : Brief description of the site

The condition

اسم الموقع : أبو حمى رئيسي	محافظة : حضرموت
المحافظة الإدارية : منطقة نجران	مستوى : ممتاز
التعداد من الموقع :	الهيئة العامة للسياحة و الآثار : 100
خط العرض (E) : 44.45183889	الأهمية الأثرية : 0
خط العرض (N) : 18.24923889	الأوضاع : التوثيق العائلي : التاريخ : الوضع الأثري : الأضرار :
	الحماية : مسود

الفترة الزمنية :
(حضور ما قبل التاريخ -الحضار الحجري الحديث) و (حضور ما قبل التاريخ بالحضار البرونزي) و (حضور ما قبل التاريخ بالحضار الحديدي) و (الفترة العربية الوسيطة -خليفة معروف)

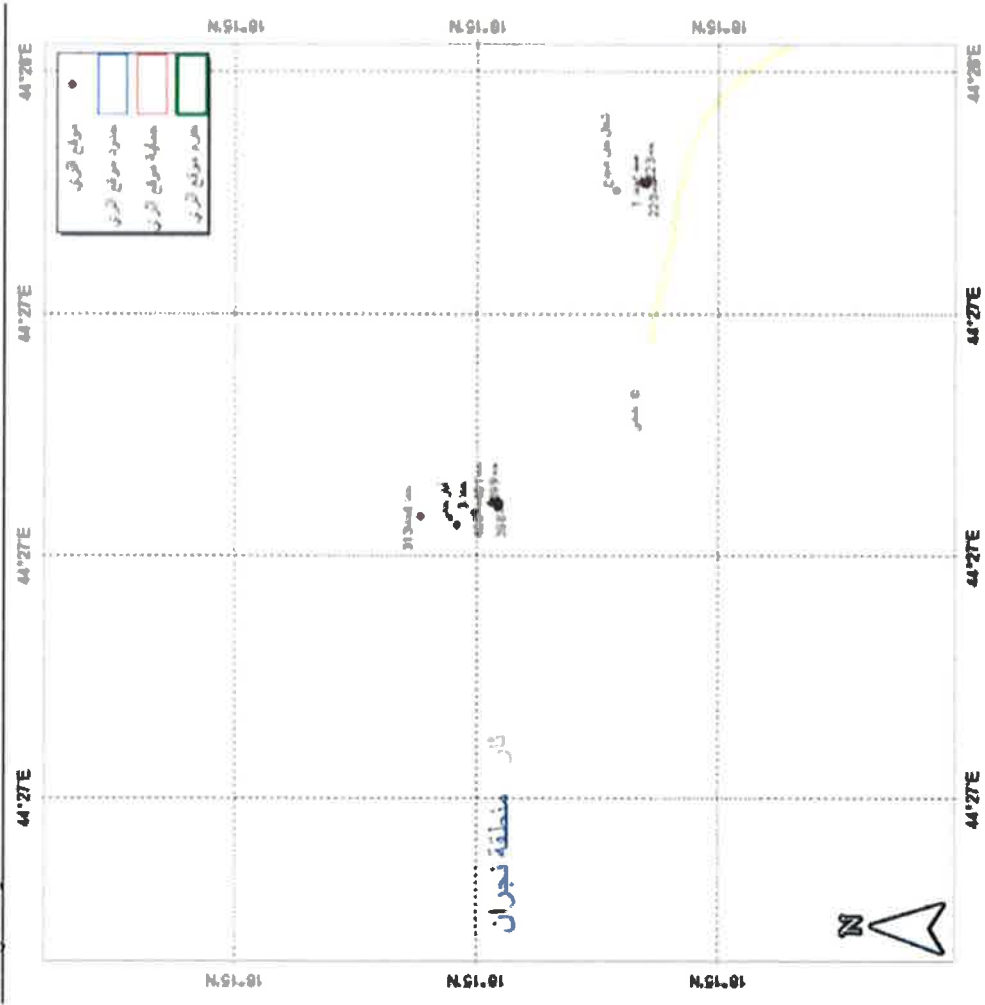
تاريخ ظهور الرقعة :
عش

وصف الموقع :
تتميز أبو حمى بموقعها الفريد والحصون التي اكتسفت على طريق البحر بين نجران والجزء الشمالي من الجزيرة العربية كما أنها تتميز بموقعها الفريد الذي يعود إلى عدة آلاف من السنين. آثار حمى ذات قيمة علمية وأهمية تاريخية تعود إلى قديم الأثر في شبه الجزيرة العربية (زبدية واحدة من قديم الأثر في الجبل) يمثل عدة مراحل من 5000 سنة قديمة لأكثر من 2500 من التاريخ العربي. تتميز الآثار الكثيرة المتكثفة بنوعها المتميز العائلي والمستقر على ارتفاع يحدف أبو حمى عن وجود معسكرات الجيوش قبل عام في المنطقة، بالإضافة إلى ذلك ، هناك عدة تلال من التجمعات 2500 عام وثلثة تلال مستقر مسكن وسبلو ط حيا للبحث الأثري قبل

قطاع الآثار والمتاحف
الإدارة العامة لتسهيل وحماية الآثار
بمارة سيول الأثر

التاريخ : 1441/06/29
الموافق : 2020/02/23
مد القريد : Mesfer H. Al-Qahitani (RP)
مسطر للمسطح

موقع تيلو حسي رئيسي بمحافظة نجران في منطقة نجران



map of the site regarding the nearby archaeological sites

قطاع الآثار والمتاحف
الإدارة العامة لتسجيل وحماية الآثار
إدارة سجل الآثار

التاريخ : 1441/06/29

المرسل : 2020/02/23

معد التقرير :- Mesfer H. Al-Qahitani (RP)

مسافر القحطاني



موقع قبر حسي رئيسي بمحافظة نجران بمنطقة نجران

المرفقات

Hama wells.docx

1

The attachments of the report (allows the attachment is contain a detailed report of the archaeological site which includes: maps, pictures, more information). Also, if there is any previous studies, such as thesis, it would be attached here.

مخرّج معلومات لسجل وطني

قطاع الآثار والمتاحف
الإدارة العامة لتسجيل وحماية الآثار
إدارة سجل الآثار

التاريخ : 1441/06/29

الموافق : 2020/02/23

معد التقرير :- Mesfer H. Al-

Qahtani (RP)

مسفر القحطاني

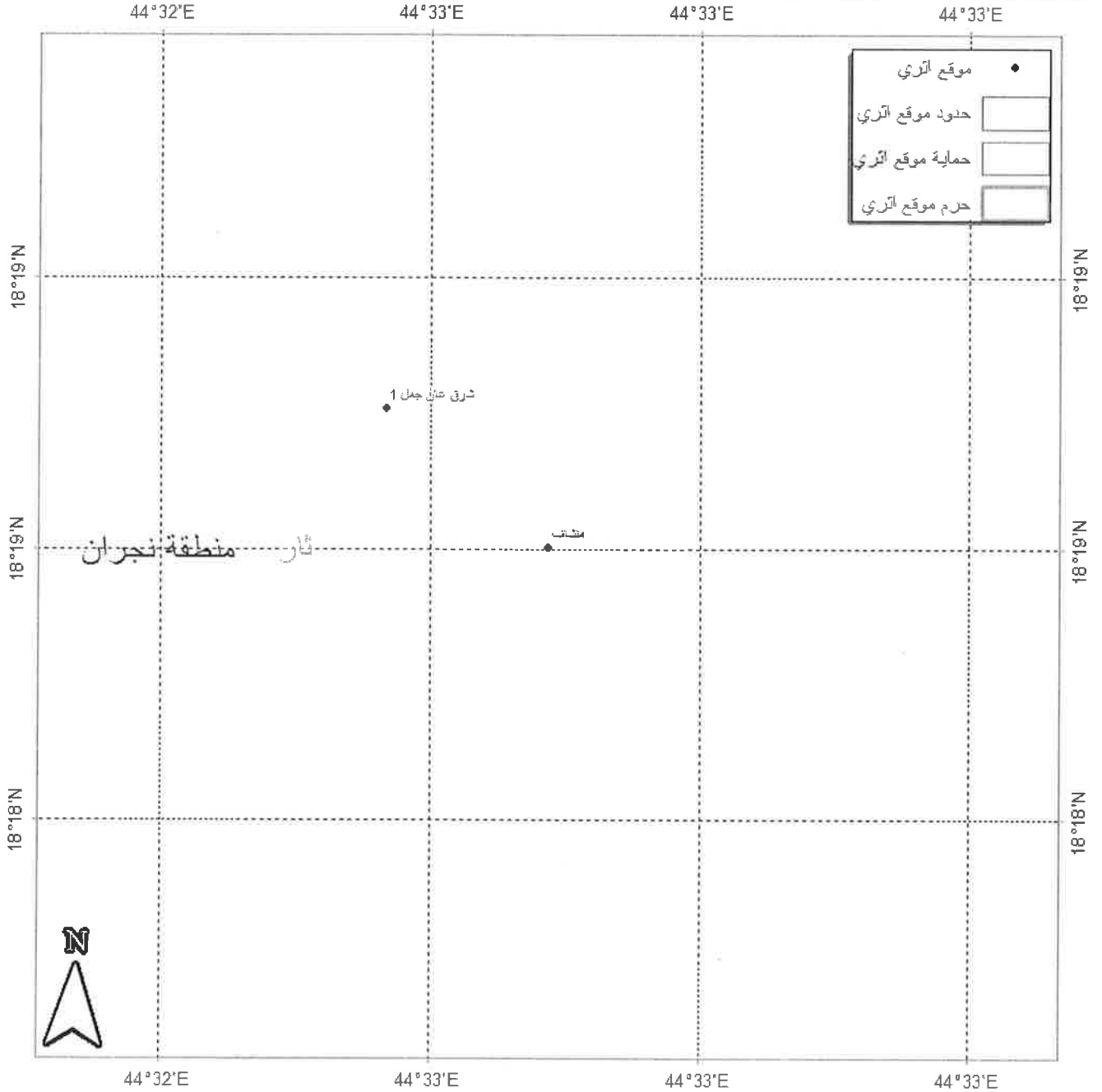
موقع منشاف بمحافظة نجران في منطقة نجران



رقم الموقع :	1106009047	اسم الموقع :	منشاف
اسم المحافظة :	نجران	المنطقة الإدارية :	منطقة نجران
نوع الموقع :	أثري	المرشد عن الموقع :	
خط العرض (N) :	18.31671111	خط الطول (E) :	44.54533611
تصنيف الموقع :	موقع رئيسي	الملكية :	حكومي
إدارة الموقع :	الهيئة العامة للسياحة	الحالة :	ممتازة
الوضع الراهن :	قائم	الجهة المشرفة :	الهيئة العامة للسياحة و الآثار
استقبال الزوار :	لا	الأهمية الأثرية :	100
التراث العالمي:	مرشح للتسجيل في قائمة التراث العالمي	الارتفاع :	0
مسميات أخرى :		التوظيف الحالي :	للموقع
الطبيعة العامة :	(رسوم حيوانية -أبقار) و (رسوم حيوانية -خيول) و (رسوم آدمية -رجال) و (رسوم حيوانية -نعام) و (رسوم حيوانية -وعول)	الأضرار :	
احتياجات الموقع :		الحماية :	مراقب آثار
حدث تاريخي :		الفترة الزمنية :	(عصور ما قبل التاريخ -العصر الحجري الحديث) و (عصور ما قبل التاريخ -العصر البرونزي) و (عصور ما قبل التاريخ -العصر الحديدي)
الملقطات السطحية :		طبوغرافية :	تلال و أودية الموقع
وصف الموقع :		المخططات :	المتوفرة

متر مع 2 كم شرق مدينة ذهبية، وتعتبر الملامح المميزة للموقع هي الصور البقرية الكبيرة، والتي يبلغ طولها حوالي 3.5 يقع موقع منشاف على بعد حوالي زخارف هيكلية أنيقة وأنماط هندسية منقوشة بمهارة عاليه وامتياز على الجسم

موقع منشاف بمحافظة ثار في منطقة نجران



قطاع الآثار والمتاحف
الإدارة العامة لتسجيل وحماية الآثار
إدارة سجل الآثار
التاريخ : 1441/06/29
الموافق : 2020/02/23
معد التقرير :- Mesfer H. Al-
Qahtani (RP)
مسفر القحطاني

موقع منشاف بمحافظة نجران في منطقة نجران



المرفقات

Minshaf.docx 1

NAME	UISITION_DATE	N_WGS84	E_WGS84	Picture
AMD01	Before-2016	18.50446300000	44.52790700000	LINKE 1
DBA01	Before-2016	18.30303000000	44.51506100000	LINKE 2
DBA02	Before-2016	18.30155583500	44.51822322700	LINKE 3
DBA03	2016	18.30026585600	44.52211674100	LINKE 4
DBA04	2016	18.29978401500	44.52473414800	LINKE 5
DBA05	2016	18.29828200000	44.53666500000	LINKE 6
DBA06	2016	18.29940300000	44.53733800000	LINKE 7
DBA07	2016	18.30097300000	44.52610900000	LINKE 8
DBA08	2016	18.29467700000	44.55140400000	LINKE 9
DBA09	2016	18.29697000000	44.55339300000	LINKE 10
HIM01	Before-2016	18.24417000000	44.46282000000	LINKE 11
HIM02	Before-2016	18.24923000000	44.45184000000	LINKE 12
HIM03	Before-2016	18.24444923300	44.45417483500	LINKE 13
HIM04	Before-2016	18.23982038800	44.45240967200	LINKE 14
HIM05	Before-2016	18.21024000000	44.47470000000	LINKE 15
HIM06	Before-2016	18.20773000000	44.47520300000	LINKE 16
HIM07	Before-2016	18.20787000000	44.47335000000	LINKE 17
HIM08	Before-2016	18.20930000000	44.47973000000	LINKE 18
HIM09	Before-2016	18.21029000000	44.47186000000	LINKE 19
HIM10	Before-2016	18.19839000000	44.47593000000	LINKE 20
HIM11	Before-2016	18.19703000000	44.47505000000	LINKE 21
HIM12	Before-2016	18.20391000000	44.47126000000	LINKE 22
HJB01	Before-2016	18.27304000000	44.40032000000	LINKE 23
HLK01	Before-2016	18.50263964500	44.62967073400	LINKE 24
HLK02	Before-2016	18.49860000000	44.63069000000	LINKE 25
HLK03	Before-2016	18.50824000000	44.63706000000	LINKE 26
HLK04	Before-2016	18.50303487700	44.63601434100	LINKE 27
IDB01	Before-2016	18.32121001000	44.54017990000	LINKE 28
JML01	Before-2016	18.29694000000	44.51460000000	LINKE 29
KSB01	Before-2016	18.49854000000	44.62100000000	LINKE 30
KSB02	Before-2016	18.49398000000	44.62575000000	LINKE 31
MDF01	Before-2016	18.54181000000	45.38847000000	LINKE 32
MDF02	Before-2016	18.54382000000	45.39201000000	LINKE 33
MDF03	Before-2016	18.54603000000	45.39362000000	LINKE 34
MDF04	Before-2016	18.54748000000	45.39470000000	LINKE 35
MDF05	Before-2016	18.54931000000	45.39563000000	LINKE 36
MDF06	Before-2016	18.54844000000	45.39333000000	LINKE 37
MDF18	Before-2016	18.56864000000	45.37874000000	LINKE 38
MRY01	Before-2016	18.48912000000	44.49328000000	LINKE 39
MRY02	Before-2016	18.49060000000	44.50626000000	LINKE 40
MRY03	Before-2016	18.46543000000	44.50143000000	LINKE 41
MRY04	Before-2016	18.48305000000	44.47302000000	LINKE 42
MRY05	Before-2016	18.49879000000	44.45628000000	LINKE 43
MRY06	Before-2016	18.49583020000	44.45445997000	LINKE 44
MRY07	Before-2016	18.49817000000	44.52200100000	LINKE 45
MRY08	Before-2016	18.47068020000	44.51071990000	LINKE 46

MRY09	Before-2016	18.48499000000	44.49984000000	LINKE 47
MRY10	Before-2016	18.48900000000	44.49974000000	LINKE 48
MRY11	Before-2016	18.48974000000	44.49056000000	LINKE 49
MRY12	Before-2016	18.49091000000	44.49472000000	LINKE 50
MRY13	Before-2016	18.47483000000	44.49838000000	LINKE 51
MRY14	Before-2016	18.48730500000	44.49442000000	LINKE 52
MRY15	Before-2016	18.47783900000	44.49858600000	LINKE 53
IBD02	Before-2016	18.31671000000	44.54533000000	LINKE 54
MSM01	Before-2016	18.42355000000	44.42541000000	LINKE 55
NMA01	Before-2016	18.62873001000	44.37445003000	LINKE 56
NMA02	Before-2016	18.63864998000	44.37653990000	LINKE 57
NMA03	2016	18.61872880100	44.37753959100	LINKE 58
SAD01	2016	18.30941648600	44.48955426100	LINKE 59
SAD02	2016	18.31712594000	44.48028864000	LINKE 60
SAD03	2016	18.32433253400	44.46361456700	LINKE 61
SAD04	2016	18.35399251600	44.49077016600	LINKE 62
SAD05	2016	18.35442081900	44.49790854900	LINKE 63
SAD06	2016	18.35387354300	44.51061487000	LINKE 64
SAD07	2016	18.35073265400	44.51589727400	LINKE 65
SAD08	2016	18.34749658700	44.51906195700	LINKE 66
SAD09	2016	18.35147742500	44.52395174900	LINKE 67
SAD10	2016	18.35052564100	44.52963271200	LINKE 68
SAD11	2016	18.34654004400	44.52995988800	LINKE 69
SAD12	2016	18.34499339400	44.53349933700	LINKE 70
SAD13	2016	18.34780710700	44.53617325600	LINKE 71
SAD14	2016	18.34799746400	44.54012316100	LINKE 72
SAD15	2016	18.34753346900	44.54465603400	LINKE 73
SAD16	2016	18.34827200000	44.54742300000	LINKE 74
SHA01	Before-2016	18.42249000000	44.57168997000	LINKE 75
SMA01	Before-2016	18.35456990000	44.51903997000	LINKE 76
SMA02	Before-2016	18.35687010000	44.52900030000	LINKE 77
SMA03	Before-2016	18.36052001000	44.53031000000	LINKE 78
SMA04	Before-2016	18.37351000000	44.57719000000	LINKE 79
SMA05	Before-2016	18.37178200000	44.54984200000	LINKE 80
SMA06	Before-2016	18.37088900000	44.54424000000	LINKE 81
SMA07	Before-2016	18.37120400000	44.54851800000	LINKE 82
SMA08	Before-2016	18.37089200000	44.54692900000	LINKE 83
SMA09	Before-2016	18.35337300000	44.55041900000	LINKE 84
SMA10	Before-2016	18.35586700000	44.54981900000	LINKE 85
SMA11	2016	18.35554800000	44.52836100000	LINKE 86
SMA12	2016	18.37267300000	44.54449500000	LINKE 87
SMA13	2016	18.35230300000	44.54752800000	LINKE 88
SMA14	2016	18.35878400000	44.54813900000	LINKE 89
SMA15	2016	18.36246000000	44.51710500000	LINKE 90
SMA16	2016	18.36334300000	44.51518200000	LINKE 91
SMA17	2016	18.36379100000	44.54222600000	LINKE 92
SMA18	2016	18.36742100000	44.54812900000	LINKE 93

SMA19	2016	18.36775200000	44.54985400000	LINKE 94
SMA20	2016	18.36872700000	44.55371300000	LINKE 95
SSA01	Before-2016	18.44227010000	44.59145020000	LINKE 96
SSA02	Before-2016	18.44886990000	44.58729030000	LINKE 97
SSA03	Before-2016	18.44679000000	44.59878000000	LINKE 98
SYB01	Before-2016	18.59425000000	44.38181000000	LINKE 99
SYB02	Before-2016	18.58508001000	44.37561998000	LINKE 100
SYB03	2016	18.57910377000	44.38398440800	LINKE 101
SYB04	2016	18.58207199900	44.38242652900	LINKE 102
TUR01	Before-2016	18.44646000000	44.48108000000	LINKE 103
UNK01	Before-2016	18.53912000000	44.37143000000	LINKE 104
ad-Durayb 1	Before-2016	17.52670000000	44.24825000000	LINKE 105
ad-Durayb 2	Before-2016	17.52320000000	44.26096000000	LINKE 106
Al-?amda' - G	Before-2016	19.04196000000	43.57940000000	LINKE 107
Al-?amda' - Ji	Before-2016	19.05313990000	43.59463998000	LINKE 108
Al-?amda' - V	Before-2016	19.02278010000	43.60696010000	LINKE 109
al-Murakkab	Before-2016	17.53211000000	44.44344000000	LINKE 110
al-Qa?ima	Before-2016	18.47036000000	44.20836000000	LINKE 111
al-Qa?ima	Before-2016	18.47036000000	44.20836000000	LINKE 112
Dharwa?	Before-2016	17.47034000000	44.22059000000	LINKE 113
Dharwa?	Before-2016	17.47034000000	44.22059000000	LINKE 114
Murayghan	Before-2016	19.05352000000	43.78033000000	LINKE 115
Qarn az-Za?fi	Before-2016	17.52383000000	44.26434000000	LINKE 116
Qarn az-Za?fi	Before-2016	17.52342000000	44.26650000000	LINKE 117
Ukhud al-Ja	Before-2016	17.46902500000	44.17695300000	LINKE 118
Umm al-Aydi	Before-2016	18.05615000000	44.13598000000	LINKE 119
BYD01	Feb-17	18.37217303900	44.49574695900	LINKE 120
BYD02	Feb-17	18.37499416800	44.49282319800	LINKE 121
BYD03	Feb-17	18.37608524500	44.48850343300	LINKE 122
BYD04	Feb-17	18.38093156100	44.47266128200	LINKE 123
BYD05	Feb-17	18.38685222200	44.46646150200	LINKE 124
BYD06	Feb-17	18.38646317700	44.46310201700	LINKE 125
BYD07	Feb-17	18.40317790300	44.48065056400	LINKE 126
BYD08	Feb-17	18.40280248000	44.48550858000	LINKE 127
BYD11	Feb-17	18.40462078900	44.49285960600	LINKE 128
BYD12	Feb-17	18.40539646600	44.49565979800	LINKE 129
BYD13	Feb-17	18.40812103700	44.50065093300	LINKE 130
BYD14	Feb-17	18.41107846900	44.50487464500	LINKE 131
BYD10	Feb-17	18.39986294900	44.48804512300	LINKE 132
BYD09	Feb-17	18.40209911200	44.48609766000	LINKE 133
ZGT01.1	1-Apr-17	18.59407400000	44.58111700000	LINKE 134
ZGT01.2	1-Apr-17	18.59410700000	44.58129400000	LINKE 135
ZGT01.3	1-Apr-17	18.59458900000	44.58201700000	LINKE 136
ZGT01.4	1-Apr-17	18.59468100000	44.58211400000	LINKE 137
ZGT01.5	1-Apr-17	18.59471600000	44.58212300000	LINKE 138
ZGT01.7	1-Apr-17	18.59463710500	44.58222071700	LINKE 139
ZGT01.6	1-Apr-17	18.59464400000	44.58205800000	LINKE 140

ZGT01.8	1-Apr-17	18.59363400000	44.58276800000	LINKE 141
ZGT01.9	1-Apr-17	18.59360371200	44.58275828400	LINKE 142
ZGT01.10	1-Apr-17	18.59358000000	44.58282000000	LINKE 143
ZGT01.11	1-Apr-17	18.59377600000	44.58215200000	LINKE 144
ZGT01.12	1-Apr-17	18.59377800000	44.58192100000	LINKE 145
ZGT02.1	1-Apr-17	18.58838700000	44.58217900000	LINKE 146
ZGT02.2	1-Apr-17	18.58859600000	44.58228600000	LINKE 147
ZGT03.1	1-Apr-17	18.58427800000	44.58333600000	LINKE 148
ZGT03.2	1-Apr-17	18.58381000000	44.58344600000	LINKE 149
ZGT04.1	1-Apr-17	18.58985900000	44.58987300000	LINKE 150
ZGT04.2	1-Apr-17	18.58991400000	44.59001800000	LINKE 151
ZGT04.3	1-Apr-17	18.58898500000	44.59002700000	LINKE 152
ZGT04.4	1-Apr-17	18.58900800000	44.58978100000	LINKE 153
ZGT04.5	1-Apr-17	18.58900800000	44.58978300000	LINKE 154
ZGT04.6	1-Apr-17	18.58916100000	44.58954000000	LINKE 155
ZGT05.G1	1-Apr-17	18.58648400000	44.59041100000	LINKE 156
ZGT05.1	1-Apr-17	18.58647800000	44.59083300000	LINKE 157
ZGT03.3	1-Apr-17	18.58226000000	44.58912700000	LINKE 158
ZGT03.4	1-Apr-17	18.58200600000	44.58925900000	LINKE 159
ZGT03.05	2-Apr-17	18.58179600000	44.58935900000	LINKE 160
ZGT03.06	2-Apr-17	18.58172100000	44.58943800000	LINKE 161
ZGT03.07	2-Apr-17	18.58210900000	44.58908600000	LINKE 162
ZGT03.08	2-Apr-17	18.58204900000	44.58883600000	LINKE 163
ZGT03.09	2-Apr-17	18.58177900000	44.58915300000	LINKE 164
ZGT03.10	2-Apr-17	18.58175100000	44.58931500000	LINKE 165
ZGT03.11	2-Apr-17	18.58087900000	44.58905200000	LINKE 166
ZGT03.12	2-Apr-17	18.58096200000	44.58901400000	LINKE 167
ZGT03.13	2-Apr-17	18.58105100000	44.58805200000	LINKE 168
ZGT03.14	2-Apr-17	18.58092600000	44.58752500000	LINKE 169
ZGT03.15	2-Apr-17	18.57954400000	44.58732700000	LINKE 170
ZGT03.16	2-Apr-17	18.57942700000	44.58673900000	LINKE 171
ZGT03.17	2-Apr-17	18.57933600000	44.58629800000	LINKE 172
ZGT03.18	2-Apr-17	18.57836100000	44.58544500000	LINKE 173
ZGT03.19	2-Apr-17	18.57763600000	44.58480700000	LINKE 174
ZGT03.20	2-Apr-17	18.58102600000	44.58144400000	LINKE 175
ZGT03.21	2-Apr-17	18.57829200000	44.58052500000	LINKE 176
ZGT03.22	2-Apr-17	18.57820000000	44.58060700000	LINKE 177
ZGT03.23	2-Apr-17	18.58236800000	44.57807800000	LINKE 178
ZGT03.24	2-Apr-17	18.58394400000	44.57984900000	LINKE 179
ZGT03.25	2-Apr-17	18.58421100000	44.58090000000	LINKE 180
ZGT03.26	2-Apr-17	18.58448600000	44.58081500000	LINKE 181
ZGT06.01	2-Apr-17	18.57684000000	44.56696800000	LINKE 182
ZGT06.02	2-Apr-17	18.57948300000	44.56927400000	LINKE 183
ZGT07.01	2-Apr-17	18.57628800000	44.57914800000	LINKE 184
ZGT07.02	2-Apr-17	18.57625400000	44.57910900000	LINKE 185
ZGT07.03	2-Apr-17	18.57587800000	44.57925200000	LINKE 186
ZGT07.04	2-Apr-17	18.57579400000	44.57916500000	LINKE 187

ZGT07.05	2-Apr-17	18.57532700000	44.57871200000	LINKE 188
ZGT07.06	2-Apr-17	18.57519300000	44.57857700000	LINKE 189
ZGT07.16	3-Apr-17	18.57726797500	44.57682302200	LINKE 190
ZGT07.19	3-Apr-17	18.57692004200	44.57848004100	LINKE 191
ZGT07.07	3-Apr-17	18.57348999900	44.57514303700	LINKE 192
ZGT07.08	3-Apr-17	18.57346703300	44.57521897700	LINKE 193
ZGT07.09	3-Apr-17	18.57376702100	44.57492502400	LINKE 194
ZGT07.10	3-Apr-17	18.57379099400	44.57474003500	LINKE 195
ZGT07.11	3-Apr-17	18.57210396800	44.57175599400	LINKE 196
ZGT07.12	3-Apr-17	18.57421000500	44.57041899700	LINKE 197
ZGT07.13	3-Apr-17	18.57636700400	44.57238497200	LINKE 198
ZGT07.14	3-Apr-17	18.57600398400	44.57265000800	LINKE 199
ZGT07.15	3-Apr-17	18.57767198200	44.57675999000	LINKE 200
ZGT07.17	3-Apr-17	18.57624404100	44.57740799500	LINKE 201
ZGT07.18	3-Apr-17	18.57588999000	44.57749097600	LINKE 202
ZGT08.01	3-Apr-17	18.57301197900	44.55789299700	LINKE 203
ZGT08.02	3-Apr-17	18.57304098100	44.55786198400	LINKE 204
ZGT08.03	3-Apr-17	18.57309202700	44.55776601100	LINKE 205
ZGT08.04	3-Apr-17	18.56682001600	44.55394696400	LINKE 206
ZGT08.05	3-Apr-17	18.56731798500	44.55418802800	LINKE 207
ZGT08.06	3-Apr-17	18.56165299200	44.54840602400	LINKE 208
ZGT08.07	3-Apr-17	18.55872896500	44.54700398300	LINKE 209
ZGT08.08	3-Apr-17	18.55842101400	44.54523598800	LINKE 210
ZGT08.09	3-Apr-17	18.55675100300	44.55472597900	LINKE 211
ZGT08.10	3-Apr-17	18.55694083200	44.55351450900	LINKE 212
ZGT08.11	3-Apr-17	18.55616997000	44.55363901300	LINKE 213
ZGT08.12	3-Apr-17	18.55645897800	44.55354899200	LINKE 214
ZGT08.13	3-Apr-17	18.55499097100	44.55408702600	LINKE 215
ZGT08.14	3-Apr-17	18.52622604000	44.54273197800	LINKE 216
JWZ01.01	4-Apr-17	18.26651900000	44.47450700000	LINKE 217
JWZ01.02	4-Apr-17	18.26755800000	44.47450700000	LINKE 218
JWZ01.03	4-Apr-17	18.26775600000	44.47413900000	LINKE 219
JWZ01.04	4-Apr-17	18.26697200000	44.47376000000	LINKE 220
DBA01.02	4-Apr-17	18.30267300000	44.51516700000	LINKE 221
SAD06.02	5-Apr-17	18.35355000000	44.51014500000	LINKE 222
SAD06.03	5-Apr-17	18.35433000000	44.51048900000	LINKE 223
SAD06.04	5-Apr-17	18.35414600000	44.51081900000	LINKE 224
SAD07.02	5-Apr-17	18.35056000000	44.51484100000	LINKE 225
SAD07.03	5-Apr-17	18.35053800000	44.51489100000	LINKE 226
SAD07.04	5-Apr-17	18.35119000000	44.51522400000	LINKE 227
SAD07.05	5-Apr-17	18.35123600000	44.51495300000	LINKE 228
SAD07.06	5-Apr-17	18.35151400000	44.51495500000	LINKE 229
SMA20.02	6-Apr-17	18.36877400000	44.55373200000	LINKE 230
SMA20.03	6-Apr-17	18.36858295700	44.55366512000	LINKE 231
SMA20.04	6-Apr-17	18.36913200000	44.55374500000	LINKE 232
SMA20.05	6-Apr-17	18.36916600000	44.55381900000	LINKE 233
SMA20.06	6-Apr-17	18.36914400000	44.55380900000	LINKE 234

SMA20.07	6-Apr-17	18.36935998200	44.55375497200	LINKE 235
SMA20.09	6-Apr-17	18.36919300000	44.55387900000	LINKE 236
SMA20.10	6-Apr-17	18.36920000000	44.55389800000	LINKE 237
SMA20.08	6-Apr-17	18.36918000000	44.55380300000	LINKE 238
SMA20.11	6-Apr-17	18.36921800000	44.55393800000	LINKE 239
SMA20.12	6-Apr-17	18.36919800000	44.55400100000	LINKE 240
SMA20.13	6-Apr-17	18.36919400000	44.55398700000	LINKE 241
SMA20.14	6-Apr-17	18.36920000000	44.55406200000	LINKE 242
SMA20.15	6-Apr-17	18.36874800000	44.55433800000	LINKE 243
SMA20.16	6-Apr-17	18.36863201600	44.55433520300	LINKE 244
SMA20.17	6-Apr-17	18.36840000000	44.55450500000	LINKE 245
MRY07.02	6-Apr-17	18.49854400000	44.52299300000	LINKE 246
MRY07.03	6-Apr-17	18.49840300000	44.52303800000	LINKE 247
MRY07.04	6-Apr-17	18.49820600000	44.52283300000	LINKE 248
MRY07.05	6-Apr-17	18.49794800000	44.52275800000	LINKE 249
MRY07.06	6-Apr-17	18.49792000000	44.52259300000	LINKE 250
MRY07.07	6-Apr-17	18.49792400000	44.52251500000	LINKE 251
MRY07.08	6-Apr-17	18.49841600000	44.52277900000	LINKE 252
MRY07.09	6-Apr-17	18.49826600000	44.52197600000	LINKE 253
MRY07.10	6-Apr-17	18.49834400000	44.52217200000	LINKE 254
ZGT08.15	8-Apr-17	18.55193300000	44.54971800000	LINKE 255
ZGT08.16	8-Apr-17	18.55197600000	44.54960000000	LINKE 256
ZGT08.17	8-Apr-17	18.54949300000	44.54973000000	LINKE 257
ZGT08.18	8-Apr-17	18.54938100000	44.54992900000	LINKE 258
ZGT08.19	8-Apr-17	18.54907000000	44.55024800000	LINKE 259
ZGT08.20	8-Apr-17	18.54881300000	44.55055600000	LINKE 260
ZGT08.21	8-Apr-17	18.54803500000	44.55114900000	LINKE 261
ZGT08.22	8-Apr-17	18.54818000000	44.55138000000	LINKE 262
ZGT08.23	8-Apr-17	18.54795000000	44.55109200000	LINKE 263
ZGT08.24	8-Apr-17	18.54643600000	44.55363300000	LINKE 264
ZGT08.25	8-Apr-17	18.54647500000	44.55325300000	LINKE 265
ZGT08.26	8-Apr-17	18.54654600000	44.55298200000	LINKE 266
ZGT08.27	8-Apr-17	18.54652100000	44.55243900000	LINKE 267
ZGT08.28	8-Apr-17	18.54652100000	44.55220900000	LINKE 268
ZGT08.29	8-Apr-17	18.54651100000	44.55223200000	LINKE 269
ZGT08.30	8-Apr-17	18.54653900000	44.55223800000	LINKE 270
ZGT08.31	8-Apr-17	18.54636200000	44.55188300000	LINKE 271
ZGT08.32	8-Apr-17	18.54638700000	44.55196500000	LINKE 272
ZGT08.33	8-Apr-17	18.54622600000	44.55214200000	LINKE 273
ZGT08.34	8-Apr-17	18.54535500000	44.55316500000	LINKE 274
ZGT08.35	8-Apr-17	18.54293300000	44.55312700000	LINKE 275
ZGT08.36	8-Apr-17	18.54243800000	44.55366700000	LINKE 276
ZGT08.37	8-Apr-17	18.53967300000	44.54873200000	LINKE 277
ZGT08.38	8-Apr-17	18.53631800000	44.54843700000	LINKE 278
ZGT08.39	8-Apr-17	18.53629500000	44.54846500000	LINKE 279
ZGT08.40	8-Apr-17	18.53631200000	44.54850000000	LINKE 280
MYR16.01	8-Apr-17	18.48622800000	44.49359800000	LINKE 281

SAD17.01	9-Apr-17	18.33107700000	44.46101700000	LINKE 282
SAD17.02	9-Apr-17	18.33141900000	44.46057700000	LINKE 283
SHA02.01	9-Apr-17	18.42422300000	44.53941200000	LINKE 284
SHA02.02	9-Apr-17	18.42436100000	44.53942100000	LINKE 285
SHA02.03	9-Apr-17	18.42475700000	44.53973700000	LINKE 286
SHA02.04	9-Apr-17	18.42475500000	44.53973600000	LINKE 287
SHA02.05	9-Apr-17	18.42633800000	44.54009600000	LINKE 288
SHA02.06	9-Apr-17	18.42666000000	44.54030300000	LINKE 289
SHA02.07	9-Apr-17	18.42673300000	44.54017500000	LINKE 290
SHA02.08	9-Apr-17	18.42640500000	44.53986300000	LINKE 291
SHA02.09	9-Apr-17	18.42610800000	44.53891800000	LINKE 292
SHA02.10	9-Apr-17	18.42623000000	44.53879000000	LINKE 293
SHA02.11	9-Apr-17	18.42668600000	44.53860200000	LINKE 294
SHA02.12	9-Apr-17	18.42783700000	44.53916900000	LINKE 295
SHA02.13	9-Apr-17	18.43037500000	44.53631400000	LINKE 296
SHA02.14	9-Apr-17	18.43051800000	44.53611400000	LINKE 297
SHA02.15	9-Apr-17	18.43067900000	44.53623500000	LINKE 298
SHA02.16	9-Apr-17	18.43073800000	44.53623800000	LINKE 299
SHA02.17	9-Apr-17	18.43079000000	44.53654900000	LINKE 300
SHA02.18	9-Apr-17	18.43092800000	44.53649700000	LINKE 301
SHA02.19	9-Apr-17	18.43090400000	44.53644200000	LINKE 302
SHA02.20	9-Apr-17	18.43087200000	44.53651800000	LINKE 303
SHA02.21	9-Apr-17	18.43104600000	44.53619500000	LINKE 304
SHA02.22	9-Apr-17	18.43325400000	44.53397600000	LINKE 305
SHA02.23	9-Apr-17	18.43518600000	44.53055200000	LINKE 306
SHA02.24	9-Apr-17	18.43525900000	44.53045000000	LINKE 307
SHA02.25	9-Apr-17	18.43522700000	44.53051800000	LINKE 308
SHA02.26	9-Apr-17	18.43784400000	44.52883300000	LINKE 309
SHA02.27	9-Apr-17	18.43833400000	44.52424400000	LINKE 310
SHA02.28	9-Apr-17	18.43744600000	44.51928800000	LINKE 311
SMA12.02	9-Apr-17	18.37257900000	44.54396000000	LINKE 312
SAD18.01	10-Apr-17	18.36274900000	44.48358400000	LINKE 313
SAD18.02	10-Apr-17	18.36255700000	44.48345300000	LINKE 314
SAD18.04	10-Apr-17	18.36274000000	44.48320700000	LINKE 315
SAD18.03	10-Apr-17	18.36272700000	44.48326800000	LINKE 316
SAD18.05	10-Apr-17	18.36196500000	44.48388500000	LINKE 317
SAD18.06	10-Apr-17	18.36195300000	44.48397100000	LINKE 318
SAD18.07	10-Apr-17	18.36190700000	44.48403700000	LINKE 319
SAD18.08	10-Apr-17	18.36189100000	44.48405000000	LINKE 320
SAD18.09	10-Apr-17	18.36151700000	44.48384300000	LINKE 321
SAD18.10	10-Apr-17	18.36008500000	44.48320600000	LINKE 322
SAD18.11	10-Apr-17	18.35990400000	44.48333600000	LINKE 323
SAD18.12	10-Apr-17	18.35969100000	44.48378100000	LINKE 324
SAD18.13	10-Apr-17	18.35960800000	44.48376300000	LINKE 325
SAD18.14	10-Apr-17	18.35970500000	44.48381300000	LINKE 326
SAD18.15	10-Apr-17	18.35982300000	44.48375100000	LINKE 327
SAD18.16	10-Apr-17	18.35959300000	44.48383500000	LINKE 328

SAD18.17	10-Apr-17	18.35885300000	44.48359300000	LINKE 329
SAD18.18	10-Apr-17	18.35865100000	44.48348300000	LINKE 330
SAD18.19	10-Apr-17	18.35866900000	44.48331400000	LINKE 331
SAD18.20	10-Apr-17	18.35856100000	44.48317200000	LINKE 332
SAD18.21	10-Apr-17	18.35868600000	44.48237100000	LINKE 333
SAD18.22	10-Apr-17	18.35878600000	44.48229200000	LINKE 334
SAD18.23	10-Apr-17	18.35875200000	44.48217000000	LINKE 335
SAD18.24	10-Apr-17	18.35945200000	44.48195400000	LINKE 336
SAD18.25	10-Apr-17	18.35959000000	44.48149100000	LINKE 337
SAD18.26	10-Apr-17	18.35946500000	44.48129500000	LINKE 338
SAD18.27	10-Apr-17	18.35955400000	44.48128600000	LINKE 339
SAD18.28	10-Apr-17	18.35858000000	44.48127000000	LINKE 340
SAD18.29	10-Apr-17	18.35810200000	44.48155600000	LINKE 341
SAD18.30	10-Apr-17	18.35830600000	44.48143000000	LINKE 342
SAD18.31	10-Apr-17	18.35857700000	44.48088900000	LINKE 343
SAD18.32	10-Apr-17	18.35862200000	44.48058600000	LINKE 344
BYD15.01	10-Apr-17	18.39296500000	44.48098400000	LINKE 345
BYD15.02	10-Apr-17	18.39303000000	44.48106200000	LINKE 346
BYD15.03	10-Apr-17	18.39311000000	44.48109700000	LINKE 347
BYD15.04	10-Apr-17	18.39331800000	44.48101300000	LINKE 348
BYD15.05	10-Apr-17	18.39410700000	44.48180900000	LINKE 349
BYD15.06	10-Apr-17	18.38872700000	44.48528700000	LINKE 350
BYD15.07	10-Apr-17	18.38882200000	44.48520900000	LINKE 351
BYD15.08	10-Apr-17	18.39050900000	44.48487300000	LINKE 352
BYD15.09	10-Apr-17	18.38765000000	44.48758800000	LINKE 353
BYD15.10	10-Apr-17	18.38977700000	44.49243700000	LINKE 354
BYD15.11	10-Apr-17	18.38546200000	44.47935500000	LINKE 355
BYD15.12	10-Apr-17	18.38550100000	44.47936000000	LINKE 356
SMA24.01	11-Apr-17	18.37348800000	44.55735300000	LINKE 357
SMA24.02	11-Apr-17	18.37364840100	44.55742364600	LINKE 358
SMA23.03	11-Apr-17	18.37394800000	44.55750800000	LINKE 359
SMA24.04	11-Apr-17	18.37406000000	44.55736800000	LINKE 360
SMA24.05	11-Apr-17	18.37507200000	44.55682000000	LINKE 361
SMA24.06	11-Apr-17	18.37719100000	44.55316800000	LINKE 362
SMA24.07	11-Apr-17	18.37752000000	44.55278000000	LINKE 363
SMA24.08	11-Apr-17	18.37750400000	44.55268200000	LINKE 364
SMA24.09	11-Apr-17	18.37797600000	44.55542900000	LINKE 365
SMA24.10	11-Apr-17	18.37826700000	44.55561600000	LINKE 366
SMA24.11	11-Apr-17	18.37825700000	44.55616100000	LINKE 367
SMA24.12	11-Apr-17	18.37849200000	44.55613200000	LINKE 368
SMA24.13	11-Apr-17	18.37852600000	44.55590200000	LINKE 369
SMA24.14	11-Apr-17	18.37783800000	44.55660400000	LINKE 370
SMA24.15	12-Apr-17	18.38170300000	44.55546800000	LINKE 371
SMA24.16	12-Apr-17	18.38161400000	44.55583600000	LINKE 372
SMA24.17	12-Apr-17	18.38147200000	44.55585000000	LINKE 373
SMA24.18	12-Apr-17	18.38155402300	44.55586910600	LINKE 374
SMA24.19	12-Apr-17	18.38184900000	44.55539900000	LINKE 375

SMA24.20	12-Apr-17	18.38339200000	44.55011500000	LINKE 376
SMA24.21	12-Apr-17	18.38370200000	44.55007600000	LINKE 377
SMA24.22	12-Apr-17	18.38401900000	44.54986000000	LINKE 378
SMA24.23	12-Apr-17	18.38422200000	44.54982800000	LINKE 379
SMA24.24	12-Apr-17	18.38607100000	44.54925600000	LINKE 380
SMA24.25	12-Apr-17	18.38498200000	44.55140400000	LINKE 381
SMA24.26	12-Apr-17	18.38451500000	44.55538600000	LINKE 382
SMA24.27	12-Apr-17	18.38490400000	44.55496500000	LINKE 383
SMA24.28	12-Apr-17	18.38778600000	44.55248100000	LINKE 384
SMA24.29	12-Apr-17	18.38908100000	44.55185100000	LINKE 385
SMA24.30	12-Apr-17	18.39520100000	44.54841600000	LINKE 386
SMA24.31	12-Apr-17	18.39819700000	44.54604000000	LINKE 387
SMA24.32	12-Apr-17	18.39821400000	44.54596100000	LINKE 388
SMA24.33	12-Apr-17	18.39823800000	44.54593200000	LINKE 389
SMA24.34	12-Apr-17	18.39828500000	44.54599400000	LINKE 390
SMA24.35	12-Apr-17	18.39826800000	44.54612600000	LINKE 391
SMA24.36	12-Apr-17	18.39863000000	44.54604800000	LINKE 392
SMA24.37	12-Apr-17	18.39875300000	44.54589900000	LINKE 393
SMA24.38	12-Apr-17	18.39932300000	44.54610700000	LINKE 394
SMA24.39	12-Apr-17	18.39945100000	44.54618200000	LINKE 395
SMA24.40	12-Apr-17	18.39948600000	44.54611700000	LINKE 396
SMA24.41	13-Apr-17	18.40238500000	44.54436800000	LINKE 397
SMA24.42	13-Apr-17	18.40172200000	44.54398600000	LINKE 398
SMA24.43	13-Apr-17	18.40396700000	44.54564800000	LINKE 399
SMA24.44	13-Apr-17	18.40454500000	44.54565300000	LINKE 400
SMA24.45	13-Apr-17	18.40459300000	44.54550700000	LINKE 401
SMA24.46	13-Apr-17	18.40453200000	44.54541400000	LINKE 402
SMA24.47	13-Apr-17	18.40399300000	44.54474300000	LINKE 403
SMA24.48	13-Apr-17	18.40696700000	44.54476400000	LINKE 404
SMA24.49	13-Apr-17	18.40727300000	44.54460000000	LINKE 405
SMA24.50	13-Apr-17	18.40994300000	44.54413500000	LINKE 406
SMA24.51	13-Apr-17	18.41033100000	44.54433600000	LINKE 407
SMA24.52	13-Apr-17	18.41063500000	44.54425400000	LINKE 408
SMA24.53	13-Apr-17	18.41010300000	44.54374000000	LINKE 409
SMA24.54	13-Apr-17	18.40955900000	44.54298300000	LINKE 410
SMA24.55	13-Apr-17	18.41008600000	44.54290700000	LINKE 411
SMA24.56	13-Apr-17	18.41040000000	44.54299200000	LINKE 412
SMA24.57	13-Apr-17	18.41094500000	44.54312600000	LINKE 413
SMA24.58	13-Apr-17	18.41136200000	44.54326100000	LINKE 414
SMA24.59	13-Apr-17	18.41199500000	44.54323300000	LINKE 415
SMA24.60	13-Apr-17	18.41235200000	44.54322900000	LINKE 416
SMA24.61	13-Apr-17	18.41245100000	44.54294200000	LINKE 417
SMA24.62	13-Apr-17	18.41238000000	44.54277200000	LINKE 418
SMA24.63	13-Apr-17	18.41192200000	44.54258400000	LINKE 419
SMA24.64	13-Apr-17	18.40913400000	44.54264400000	LINKE 420
SMA24.65	13-Apr-17	18.40910100000	44.54263900000	LINKE 421
SMA24.66	13-Apr-17	18.39344600000	44.54592400000	LINKE 422

SMA24.67	13-Apr-17	18.39314200000	44.54597800000	LINKE 423
SMA24.68	13-Apr-17	18.39368500000	44.54793400000	LINKE 424
SMA24.69	13-Apr-17	18.39366800000	44.54866200000	LINKE 425
SMA24.70	13-Apr-17	18.39133500000	44.54850900000	LINKE 426
SMA24.71	13-Apr-17	18.39144200000	44.54464900000	LINKE 427
SMA24.72	13-Apr-17	18.39855700000	44.53846800000	LINKE 428
SMA24.73	13-Apr-17	18.41026200000	44.53909600000	LINKE 429
SMA24.74	13-Apr-17	18.41040900000	44.53903800000	LINKE 430
SMA24.75	13-Apr-17	18.41606500000	44.53885100000	LINKE 431
SMA24.76	13-Apr-17	18.41930400000	44.53951400000	LINKE 432
SMA24.77	13-Apr-17	18.41947000000	44.53954200000	LINKE 433
SMA24.78	13-Apr-17	18.41972800000	44.53949800000	LINKE 434
SMA24.79	13-Apr-17	18.41979000000	44.53941100000	LINKE 435
DBA10	26-Mar-17	18.30789196300	44.51430500500	LINKE 436
HJB02	26-Mar-17	18.27293297300	44.49011500000	LINKE 437
HJB03	26-Mar-17	18.27380502600	44.48984501900	LINKE 438
HJB04	26-Mar-17	18.26980602000	44.49650100400	LINKE 439
HJB05	26-Mar-17	18.27003199600	44.49780799400	LINKE 440
HJB01	26-Mar-17	18.26985698200	44.50187003200	LINKE 441
SMA09.2	27-Mar-17	18.35339203500	44.55035900700	LINKE 442
SMA09.3	27-Mar-17	18.35343503400	44.55020695900	LINKE 443
SMA09.4	27-Mar-17	18.35349898800	44.55019002800	LINKE 444
SMA09.5	27-Mar-17	18.35328801500	44.55031500200	LINKE 445
SMA09.6	27-Mar-17	18.35318299000	44.55040896300	LINKE 446
SMA10.5	27-Mar-17	18.35722901900	44.55072898400	LINKE 447
SMA10.6	27-Mar-17	18.35807098100	44.55184402900	LINKE 448
SMA10.7	27-Mar-17	18.35833501100	44.55171201400	LINKE 449
SMA10.8	27-Mar-17	18.35854497700	44.55142300600	LINKE 450
SMA10.9	27-Mar-17	18.35867900400	44.55175400700	LINKE 451
SMA19.1	27-Mar-17	18.36714698900	44.54977696800	LINKE 452
SMA21.1	27-Mar-17	18.36902897800	44.55658701200	LINKE 453
SMA21.2	27-Mar-17	18.36920011700	44.55655302000	LINKE 454
SMA21.3	27-Mar-17	18.36895898900	44.55736803800	LINKE 455
SMA21.4	27-Mar-17	18.36810797500	44.55623203900	LINKE 456
SMA22	27-Mar-17	18.36192900300	44.54840803500	LINKE 457
SMA10.10	28-Mar-17	18.35271603400	44.55450100800	LINKE 458
SMA10.11	28-Mar-17	18.35412302100	44.55388996800	LINKE 459
SMA10.12	28-Mar-17	18.35479298600	44.55473997600	LINKE 460
SMA10.13	28-Mar-17	18.35471998000	44.55479797900	LINKE 461
SMA10.14	28-Mar-17	18.35417800600	44.55488003800	LINKE 462
SMA10.15	28-Mar-17	18.35198597100	44.55774396700	LINKE 463
SMA10.16	28-Mar-17	18.35188496900	44.55818099900	LINKE 464
SMA10.17	28-Mar-17	18.35087201600	44.55766500900	LINKE 465
SMA10.18	28-Mar-17	18.35087897300	44.55766500900	LINKE 466
SMA10.19	28-Mar-17	18.34985001000	44.55831603100	LINKE 467
SMA10.20	28-Mar-17	18.35049298600	44.55845600900	LINKE 468
SMA10.21	28-Mar-17	18.34757600000	44.56171598300	LINKE 469

SMA10.22	28-Mar-17	18.34869900700	44.56233196900	LINKE 470
SMA10.23	28-Mar-17	18.35017698800	44.56134600600	LINKE 471
SMA10.24	28-Mar-17	18.34938900500	44.56375898800	LINKE 472
SMA10.25	28-Mar-17	18.34954599800	44.56490001600	LINKE 473
SMA10.26	28-Mar-17	18.35130896400	44.56707403100	LINKE 474
SMA10.27	28-Mar-17	18.35153502400	44.56961802200	LINKE 475
SMA10.28	28-Mar-17	18.35191103600	44.57018698600	LINKE 476
SMA10.29	28-Mar-17	18.35330603600	44.56945600000	LINKE 477
SMA10.30	28-Mar-17	18.35468703900	44.56722297700	LINKE 478
SMA10.31	28-Mar-17	18.35593996600	44.56773896700	LINKE 479
SMA10.32	28-Mar-17	18.35701896800	44.56720403400	LINKE 480
SMA10.33	28-Mar-17	18.35724796200	44.56739396800	LINKE 481
SMA10.34	28-Mar-17	18.35724502800	44.56727100500	LINKE 482
SMA10.35	28-Mar-17	18.35723899300	44.56725298400	LINKE 483
SMA10.36	28-Mar-17	18.35715198900	44.56703396500	LINKE 484
SMA10.37	29-Mar-17	18.36214700000	44.54879700000	LINKE 485
SMA10.38	29-Mar-17	18.36540400000	44.55507600000	LINKE 486
SMA10.39	29-Mar-17	18.36522100000	44.55958800000	LINKE 487
SMA10.40	29-Mar-17	18.36522100000	44.55958800000	LINKE 488
SMA10.41	29-Mar-17	18.36228000000	44.56078400000	LINKE 489
SMA10.42	29-Mar-17	18.36226100000	44.56073400000	LINKE 490
SMA10.43	29-Mar-17	18.36115200000	44.56019900000	LINKE 491
SMA10.44	29-Mar-17	18.36101300000	44.56049300000	LINKE 492
SMA10.45	29-Mar-17	18.36096000000	44.56070100000	LINKE 493
SMA10.46	29-Mar-17	18.36089200000	44.56084300000	LINKE 494
SMA10.47	29-Mar-17	18.36088400000	44.56089600000	LINKE 495
SMA10.48	29-Mar-17	18.36082300000	44.56102900000	LINKE 496
SMA10.49	29-Mar-17	18.36053100000	44.56036900000	LINKE 497
SMA10.50	29-Mar-17	18.35871100000	44.55951600000	LINKE 498
SMA10.51	29-Mar-17	18.35814500000	44.55953800000	LINKE 499
SMA10.52	29-Mar-17	18.35934200000	44.56045900000	LINKE 500
SMA10.53	29-Mar-17	18.35965900000	44.56073100000	LINKE 501
SMA10.54	29-Mar-17	18.35958300000	44.56091100000	LINKE 502
SMA10.55	29-Mar-17	18.35930500000	44.56483300000	LINKE 503
SMA10.56	29-Mar-17	18.35928200000	44.56486000000	LINKE 504
SMA10.57	29-Mar-17	18.35933100000	44.56427000000	LINKE 505
SMA10.58	29-Mar-17	18.35848600000	44.56435000000	LINKE 506
SMA10.59	29-Mar-17	18.35680200000	44.56638200000	LINKE 507
SMA10.60	29-Mar-17	18.35681600000	44.56612700000	LINKE 508
SMA23.1	29-Mar-17	18.34625500000	44.56344300000	LINKE 509
SMA23.2	29-Mar-17	18.34577200000	44.56641900000	LINKE 510
SMA23.3	29-Mar-17	18.34599200000	44.56661200000	LINKE 511
SMA23.4	29-Mar-17	18.34695900000	44.56753500000	LINKE 512
SMA23.5	29-Mar-17	18.34609600000	44.56754500000	LINKE 513
SMA23.6	29-Mar-17	18.34399000000	44.56629400000	LINKE 514
SMA23.7	29-Mar-17	18.34431800000	44.56817800000	LINKE 515
SMA23.8	29-Mar-17	18.34129900000	44.56694400000	LINKE 516

SMA23.9	29-Mar-17	18.34129900000	44.56694400000	LINKE 517
SMA23.10	29-Mar-17	18.34165300000	44.56697600000	LINKE 518
SMA23.11	29-Mar-17	18.34108800000	44.56706100000	LINKE 519
SMA23.12	29-Mar-17	18.34097700000	44.56678500000	LINKE 520
SMA23.13	29-Mar-17	18.34170300000	44.56564600000	LINKE 521
SMA23.14	29-Mar-17	18.34086700000	44.56708100000	LINKE 522
SMA23.15	29-Mar-17	18.34259700000	44.56613100000	LINKE 523
SMA23.16	29-Mar-17	18.34260900000	44.56604400000	LINKE 524
SMA23.17	29-Mar-17	18.34384400000	44.56537100000	LINKE 525
SMA23.18	29-Mar-17	18.34410600000	44.56515600000	LINKE 526
SMA23.19	30-Mar-17	18.34363000000	44.56338500000	LINKE 527
SMA23.20	30-Mar-17	18.34286100000	44.56370900000	LINKE 528
SMA23.21	30-Mar-17	18.34218800000	44.56362500000	LINKE 529
SMA23.22	30-Mar-17	18.34213300000	44.56354700000	LINKE 530
SMA23.23	30-Mar-17	18.34370800000	44.56299300000	LINKE 531
SMA23.24	30-Mar-17	18.34387965400	44.56302215300	LINKE 532
SMA23.25	30-Mar-17	18.34151900000	44.57114400000	LINKE 533
SMA23.26	30-Mar-17	18.34126700000	44.57148200000	LINKE 534
SMA23.27	30-Mar-17	18.34181700000	44.57143300000	LINKE 535
SMA23.28	30-Mar-17	18.34248700000	44.57241200000	LINKE 536
SMA23.29	30-Mar-17	18.34212500000	44.57238417600	LINKE 537
SMA23.30	30-Mar-17	18.34412500000	44.57450900000	LINKE 538
SMA23.31	30-Mar-17	18.34575000000	44.57278600000	LINKE 539
SMA23.32	30-Mar-17	18.34506100000	44.57247900000	LINKE 540
SMA23.33	30-Mar-17	18.34503700000	44.57266400000	LINKE 541
SMA23.34	30-Mar-17	18.34657500000	44.57188200000	LINKE 542
SMA23.35	30-Mar-17	18.34690800000	44.57204400000	LINKE 543
SMA23.36	30-Mar-17	18.34817800000	44.57226600000	LINKE 544
SMA23.37	30-Mar-17	18.34827700000	44.57157700000	LINKE 545
SMA23.38	30-Mar-17	18.34789200000	44.57068700000	LINKE 546
SMA23.39	30-Mar-17	18.33964200000	44.57603200000	LINKE 547
SMA29.40	30-Mar-17	18.34017000000	44.57649300000	LINKE 548
SMA23.41	30-Mar-17	18.34123000000	44.57683200000	LINKE 549
SMA23.42	30-Mar-17	18.34141600000	44.57660000000	LINKE 550

44°20'0"E 44°25'0"E 44°30'0"E 44°35'0"E 44°40'0"E

18°30'0"N

18°25'0"N

18°20'0"N

18°15'0"N

18°30'0"N

18°25'0"N

18°20'0"N

18°15'0"N



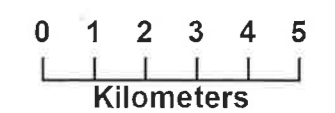
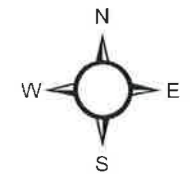
الهيئة العامة للسياحة والتراث الوطني
Saudi Commission for Tourism & National Heritage
sctnh.gov.sa

قطاع الآثار والمتاحف
الإدارة العامة لتسجيل وحماية الآثار
إدارة سجل الآثار

Wells Hima Archaeological Sites

Phase Use Register

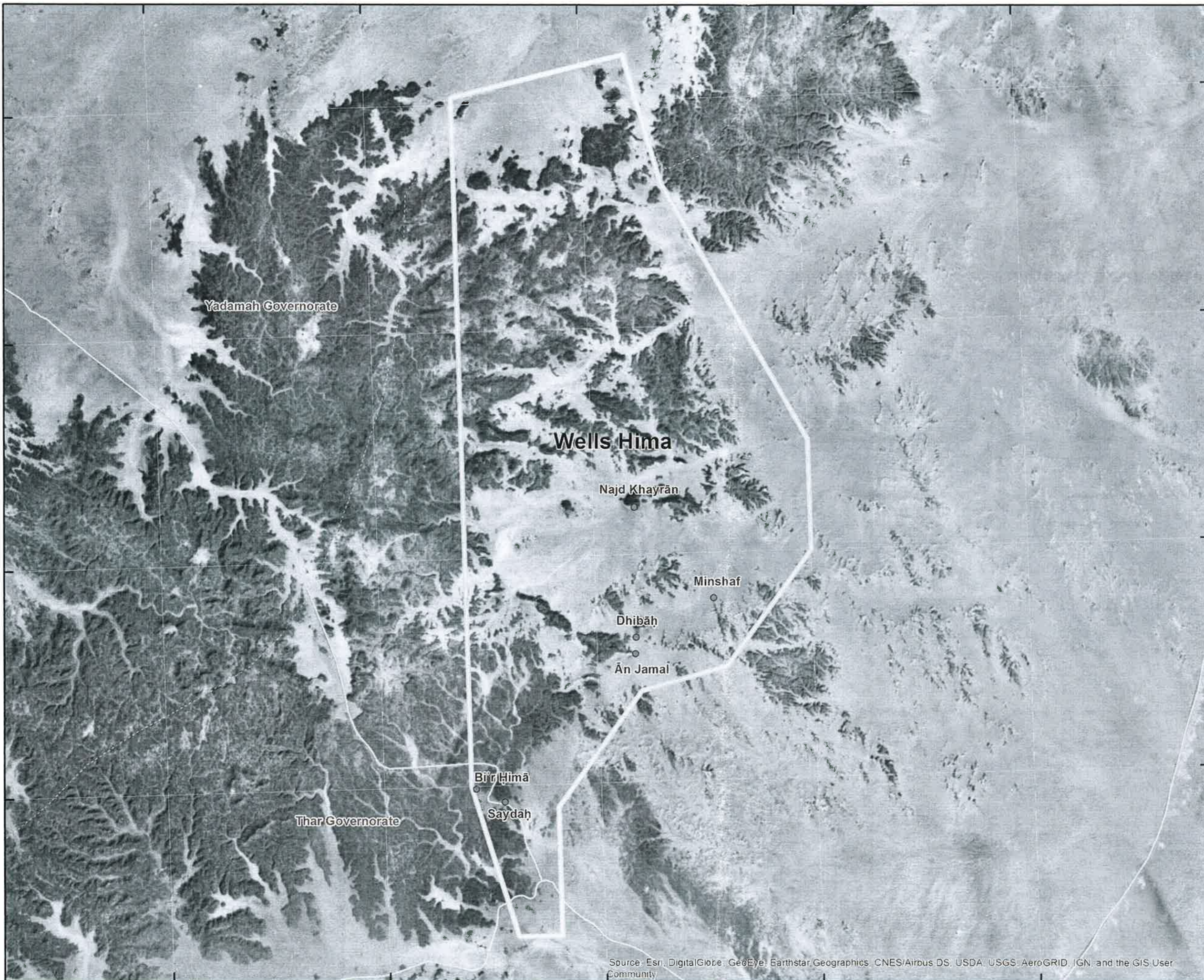
	Archaeological site
	Road
	Governorate border
	Buffer Zone



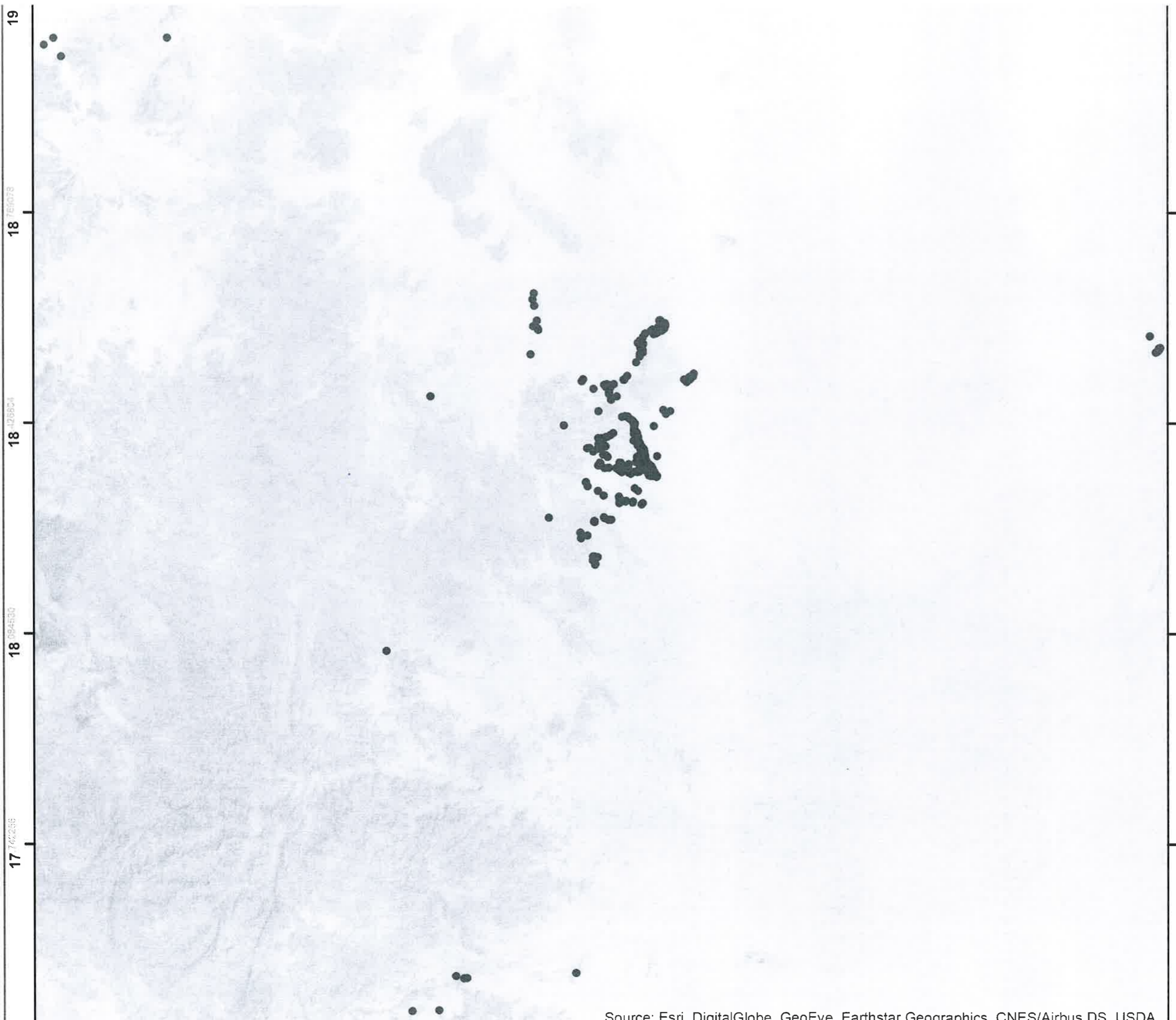
Project's Coordinate System
WGS 1984 UTM Zone 38N

PREPARED BY
IBRAHIM SULAIMAN ALDAYEL

2018



Source: Esri, DigitalGlobe, GeoEye, Earthstar, Geographics, CNES/Airbus DS, USDA, USGS, AeroGRID, IGN, and the GIS User Community



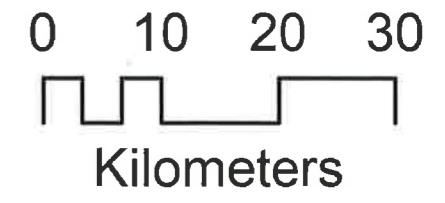
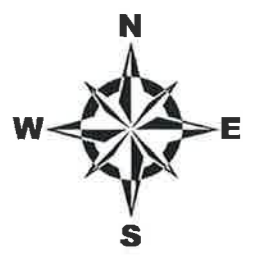
الهيئة العامة للسياحة والتراث الوطني
Saudi Commission for Tourism & National Heritage
مستقبل وطن... نبتة معاً
scth.gov.sa

قطاع الآثار والمتاحف
الإدارة العامة لتسجيل وحماية الآثار
إدارة سجل الآثار

Google Map

Hima Sites

- Archaeological Sites



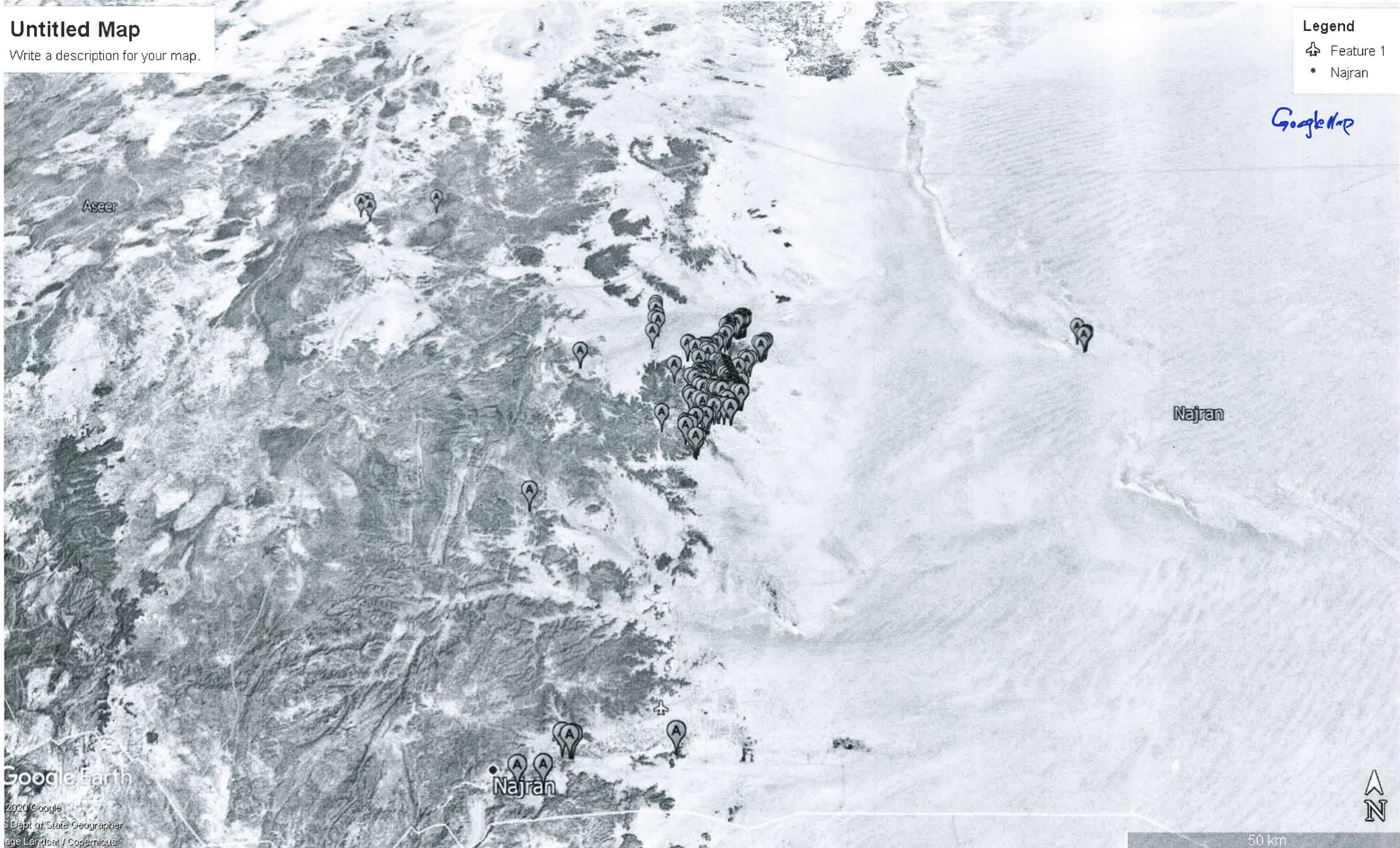
Untitled Map

Write a description for your map.

Legend

- 📍 Feature 1
- Najran

Google Map



Google Earth
© 2020 Google
Dept of State Geographer
Age Landsat / Copernicus

50 km

