

Boundary of the World Heritage Property
 Official Typical Zone
 Proposal for a new buffer zone



Servicio Nacional del Patrimonio Cultural
 MINISTERIO DE LAS CULTURAS, LAS ARTES Y EL PATRIMONIO
 LEY N° 17.288
CMN MONUMENTOS NACIONALES DE CHILE

COMPARATIVE PLANE
MINOR MODIFICATIONS TO THE BOUNDARIES
OF WORLD HERITAGE PROPERTIES

CHURCHES OF CHILOÉ
(C971 - 009)
SAN ANTONIO DE VILUPULLI
CHURCH

REGION	DE LOS LAGOS
PROVINCE	CHILOÉ
COMMUNE	CHONCHI
UBICATION	A 2,3 KM OF TOWN OF CHONCHI

- LEGENDE
- Zona Típica Oficial
Official Typical Zone
 - Propuesta para Zona de Amortiguamiento del Sitio de Patrimonio Mundial
Proposal for a new buffer zone
 - Cartografía actualizada del área de protección
Updated cartography of the protection area.

Contours

MAP BASE
Satellite Image Google Earth - Postulation UNESCO 2017

DEVELOPED BY
Yasna Guzmán - Designer

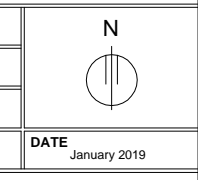
CARTOGRAPHER
Roberto Pérez de Arce

REVISED BY
Mirja Díaz Santibáñez - Architect

APPROXIMATE AREA SPM
0,23 Hectares

APPROXIMATE AREA ZA
27,54 Hectares

SCALE
Graphic



CONTENT
Boundary of the World Heritage Property - Official Typical Zone / Proposal for a new Buffer Zone

PAGE 5 - 5
COORDINATES Geográficas DATUM WGS 84

