

Dilmun Burial Mounds

Reply of the State Party of Bahrain to the ICOMOS Interim Report



© Bahrain Authority for Culture and Antiquities

24 February 2019

Table of Contents

Selection of Component Sites	3
a. Methodology of components selection, whether what has survived is a fruit of choice at the time	3
b. Exclusion of Barbar Temples and Saar Heritage Park	4
Justification for Inscription	5
a. The Publication of Dr Steffen Laursen, 'The Royal Mounds of A'ali in Bahrain' (2017)	5
b. Adjustment and re-wording of the OUV by incorporating the Early Type Mounds	6
Protection.....	7
a. How will the State Party address the challenge of protecting the Royal Mounds of A'ali, entangled in the urban fabric, considering involvement of local community?	7
Conservation of the Property.....	10
a. What is the best conservation strategy - for the different types of burial mounds?	10
Website.....	11
Annexes:	12

Selection of Component Sites

a. Methodology of components selection, whether what has survived is a fruit of choice at the time

The present day archaeological landscape of Dilmun Burial Mounds in Bahrain is, to a great extent, an outcome of several decades' long process of land transformation and development in the 20th century. The town planning, creation of a modern road network, pipelines and utilities each left its shadow on the location and number of the Dilmun Burial Mounds. Mounds that remained, are a fruit of uneasy compromise between the need of economic and social development and the safeguarding efforts of the cultural institutions.

Each selected component presented in the nomination dossier uniquely contributes to the Outstanding Universal Value, which consists of:

- The highest level of density of Late Type burial mounds in one field and the highest density of mound fields in a relatively limited area, whereby each burial mound field in Hamad Town and A'ali presents unique characteristics and features;
- A Unique ensemble of five large chieftain mounds in Janabiyah Burial Mound Field;
- Royal Mounds 1 to 17 in the settlement of A'ali, each of which presents a distinctive extent and features.

The burial mounds that have survived today are partially the fruit of a choice. It is important to highlight that the proposed burial mound fields were the first sites inscribed on the national heritage list in the late 80s. Nonetheless, whether the decision makers of the time were aware or not, the mounds present today are the most striking and representative examples. The selected property components display the original distribution of the mounds from the central area towards the north and west.

Even though some have been lost, what have remained constitutes an outstanding and unparalleled cultural patrimony which not only needs the inscription to increase the conservation measures but simply deserves it for its significance.

The Dilmun Burial Mounds submitted for the nomination to the World Heritage List comprise the most integral sites remaining in Bahrain. They are also under complete management authority of the Bahrain Authority for Culture and Antiquities which guarantees their comprehensive protection and conservation.

There are two other burial mound fields in Bahrain, containing Early Type mounds which fall under the scope of responsibilities of the Royal Court and The Bahrain Defense Force respectively. According to the vision of Bahrain Authority for Culture and Antiquities they are to be proposed for inscribed in the future (2022) after the negotiations with the mentioned authorities will have been completed.

b. Exclusion of Barbar Temples and Saar Heritage Park

The two other sites included on the Tentative List, namely Barbar Temple and Saar Heritage Park, are not intended to be included in the current serial nomination as neither of them can be considered to contribute to the Outstanding Universal Value of the nominated property. Dilmun Burial Mounds are a testimony to the sepulchral tradition of the Early Dilmun Civilization (iii) characterized with their unique architectural typology (iv). This nomination to the World Heritage List is a careful selection of site components, which the State Party deems as fulfilling both proposed cultural criteria. Inclusion of either would weaken or invalidate the criteria (iii) and (iv).

Exclusion of Barbar Temples

Barbar Temples do not represent nor are they directly linked to a funerary testimony of the Early Dilmun Civilization. Including the temples in this nomination would result in an incoherent and internally contradictory file not up to the World Heritage standards and therefore the State Party has never considered it.

Exclusion of Saar Heritage Park

The settlement in Saar was founded around 2300 BCE and reached to its peak at the beginning of 1900 BCE, and lasted for another 200 years (Moon 2000, p.63). It is important to highlight that, even though the settlement existed during the same period as Early Dilmun civilization, it is considered to be a much more complex archaeological site that comprises a temple, a settlement, honeycomb burials and underground burials.

The site contains only a few insignificant burial mounds of Late Type which do not form a mound field and do not stand out to be classified individually among the Chieftain and Royal mounds. The burials are certainly linked to the Early Dilmun civilization in terms of chronology and material culture, however, there is numerous archaeological evidence for the specific nature of Saar village that seems to provide proof of a different cultural group inhabiting the area.

Architecture: The regular, almost deliberately reproduced plan for the domestic unit is a quite surprising phenomenon that could indicate a special population living there, whom attached to a special architectural tradition. The same can be formulated for the structure of the houses and even the temple; the general use of pillars supporting the covering with non-loadbearing walls between them. For the Early Dilmun Period, this phenomenon is specific to the settlement in Saar which cannot be found in Qal'at al-Bahrain – Ancient Harbour and Capital of Dilmun site.

Bitumen imports: Bitumen was found in various places in Bahrain, both in urban and sepulchral contexts. It is remarkable that the bitumen found in Saar derives from Iran, while the bitumen found in Qal'at al-Bahrain originates from Iraq. This is a very strong indicator for two different trade networks and likely also a different lifestyle.

Diet habits: There are strong differences between the corpus of animal remains found in Saar and Qal'at al-Bahrain. While in Qal'at al-Bahrain the finds included numerous big fish and cartilaginous species,

such as sharks, rays, or king soldier beams, as well as turtles and cormorants, they are almost completely absent in Saar. This difference might have derived from socio-economic reasons, but cultural avoidance of this kind of food should also be considered (Olijdam 2001).

The significant burial practices that can be observed at the site, the honeycomb burials, are the agglomeration of more than a thousand graves arranged similar to the combs of a beehive. Each burial chamber is separated from the other by interconnected curved stonewalls. Usually an arc of the outer wall is attached to the side of earlier cells, so that graves multiple outwards from the original cell located in the centre. This indicates that the tombs were constructed immediately after a person dies, in contrast to the burial mounds, which were erected beforehand. The burial ground moreover seems to follow particular organizational principles since graves of children are accumulated in specific areas (Munghal 1983, pp. 9-10). Though the arrangement of the honeycomb cemetery and the burial mound necropolis is distinct, there are a few similarities in regards to the burial chamber design. In some cases, the grave chambers are equipped with alcoves and form an L-shape; in others they present a simple rectangular layout. All graves were covered with capstones. The average height of the burial chambers is 100cm the average length varies in between 150 and 180 cm (Munghal 1983m pp, 10-13). Despite these similarities, the overall construction technique clearly differs from the burial mounds which were built as single burial monuments. Thus, the burial practices seen in the site should be considered as a different historical asset, which differ from the shared burial typology of the mounds proposed for the nomination.

Overall, it can be concluded that the architectural details of the settlement, grave furniture found in the burials and dietary habits indicate that the Saar settlement area was most likely occupied by a particular cultural group and does not provide information on common burial practices of Dilmun Civilization. The connection between the remains of the 'living and deceased' does not satisfy the overall OUV of Dilmun Burial Mounds as reflected upon by criteria (iii) and (iv) but testify to a diverse funeral tradition and completely differing typology. The State Party had reflected on these facts in the past and shaped its tentative list accordingly.

Justification for Inscription

a. The Publication of Dr Steffen Laursen, 'The Royal Mounds of A'ali in Bahrain' (2017)

The State Party of Bahrain fully agrees with ICOMOS on the importance of the publication of Dr Steffen Laursen on Royal Mounds of A'ali. The publication of Dr Steffen Laursen was effectively completed in parallel to the ongoing preparation of Dilmun Burial Mounds nomination dossier.

The publication compiles the results gathered during much earlier expeditions of Danish Archaeological team and significantly elaborates with the findings and analysis from 2012 onwards. The excavation findings and analysis of Dr Steffen reassures the presence of a Dilmun Royal Dynasty based on fundamental scientific evidence. The identification of the last Dilmun kings Ri' Mum and Yagli-'El enhances the Outstanding Universal Value of the proposed property as it certainly adds new features to

Royal Mounds 8 and 10. The C14 analysis verify the estimated time frame of the construction of Royal Mounds of A'ali and marks the tomb of the last King of Dilmun, Yagli -'El, between 1738 - 1658 BC (Laursen, 2017, pp. 357 - 370). An interesting discovery is the both mentioned names of the Kings are Amorite originated, which squarely confirms the link with Amorite Dynasty. Thus, validating that the Dilmun Kings of 1st and 2nd millennia BC were of the same origin and in close connection with the rulers of Ancient Near-Eastern cities of Babylon, Mari, Aleppo, Assur, Yamhad, Ebla, Shubat-Enlil and others. The estimated ruling period of Yagli-'El appears at the same period of Samsu-iluna of Babylon (1750-1711 BCE), the son of the legendary king Hammurabi of Babylon (1792-1750 BCE). In other words, the inscriptions found on the stone vessel sherds certify the political connections of Dilmun Civilization and Ancient Near-East, thus enhancing the historical importance of its funerary traditions.

This knowledge also sheds light on the funerary architecture of the Royal Mounds. The chambers of the mounds themselves give strong reference to Bronze Age palatial architecture. Especially the late examples of royal mounds in A'ali testify to the reference of the architecture of the living and the final resting place of the Kings of Dilmun. For instance, the entrance gates of the main burial chambers mimic the model of gate that was used in the Early Dilmun palace found at Qal'at al-Bahrain site. The transition from dromos to shaft ease the establishment of a chronology for the construction of royal mounds as the access shafts started being a part of the funerary architecture after *circa* 1800 BC based on the carbon date results of Laursen (pp. 265-277). Resting on the test results, the shaft element concern last five royal mounds in A'ali. This clearly allows the creation of a more or less precise chronological sequence of the royal mounds.

In light with the above brief, the State Party of Bahrain strongly believes that the publication of Laursen brings significant new scientific information, which supports the justification for inscription under criteria (iii) and (iv). The State Party of Bahrain appreciates the recommendation of ICOMOS on adding this new information to the proposed statement of OUV.

b. Adjustment and re-wording of the OUV by incorporating the Early Type Mounds

The State Party of Bahrain thanks ICOMOS for suggesting incorporation of the Early Type Mounds in the nomination. The State Party is aware of the few rare examples of Early Type burials, which are presently located within the proposed site boundaries of Hamad Town 2 Burial Mound Field. The State Party would like to reiterate that two Early Type mound fields are proposed to be added to the nomination at a later stage, once the full management is guaranteed (Nomination File, p. 3).

If ICOMOS recommends the inclusion of the early type burials in the OUV Statement, the State Party of Bahrain will be in agreement to it and propose that the integrity statement should highlight the fact that it can be strengthened with the inclusion of two fields, namely Wadi Al Sail and Umm Jidr Burial Mound Fields, which represent the Early Type burials the best.

Protection

- a. How will the State Party address the challenge of protecting the Royal Mounds of A'ali, entangled in the urban fabric, considering involvement of local community?

The community of A'ali is very proud of living in close neighbourhood with the Royal Mounds and A'ali East Burial mound field. Since the very first time a foreign archaeological mission came to A'ali to conduct soundings and excavations, the local community showed their enthusiasm, hospitality and made each excavation season a memorable experience.

Nowadays, the urban fabric of A'ali grew closer to the royal mounds and the inhabitants of land parcels neighbouring the mounds have become true stewards and ambassadors of Bahrain to the visitors and researchers. Assuring protection of the mounds has been achieved on all levels: governmental, municipal and individual. First of all, the Dilmun Burial Mounds Site Management Unit (hereinafter DBM Unit) reviewed all the building lots in A'ali and determined which plots can be released for construction without impacting the structural and visual integrity of the mounds, and, which should be frozen and inserted on the list of parcels for acquisition, thus preventing any construction whatsoever at any time. Bahrain Authority for Culture and Antiquities's close collaboration with the Authority of Urban Planning and Development (UPDA), Ministry of Housing (MOH), and Ministry of Works and Municipalities (MOW) have resulted in common governmental line of understanding and prioritising the needs of heritage preservation in A'ali. A positive aspect regarding the Royal Mounds is that the government of Bahrain owns sixteen out of seventeen royal mounds. The royal mounds (except Royal Mound 10) are zoned as archaeological sites and are regularly checked on by the monitoring team (which noteworthy includes three people living in A'ali).

On the municipal level, all building requests from A'ali and other property component buffer zones are reviewed and approved by the DBM Unit from the point of view of impact on any of the attributes of the proposed OUV. Municipality is also regularly involved in the cleaning activities, providing personnel and vehicles, which are supervised by the DBM Unit. The moment the site personnel identifies an unknown construction, Bahrain Authority for Culture and Antiquities (hereinafter BACA) has the right to stop the works immediately until the developer presents a valid permit document or a no-objection letter.

BACA and DBM Unit have organized several cleaning campaigns in cooperation with A'ali Charity Society. The residents of A'ali participated in the cleaning actions, which also served as awareness raising activities. A'ali Charity Organization is in active collaboration with BACA and DBM Unit for the burial mounds and follows up the activities related to them, including the UNESCO World Heritage nomination process. The local residents are aware about the areas where parking and use of vehicles is not permitted. Moreover, the residents enjoy the closeness of the mounds and consider their surrounding as a public space, as they serve as an open space in the densely urbanized settlement of A'ali. DBM Unit and BACA organize meetings with the owners of the pottery workshops on a regular basis as well.

DBM Unit undertakes projects to secure the burial mounds by appropriate fencing and signage. In the recent years, BACA has initiated a project for the replacement of old fencing with a new one, which aimed at having a modern, inviting design. DBM Unit will continue the project in 2019, as soon as the funding is confirmed. The State Party believes that upgrading the interpretation measures supports the idea of mounds being a part of the settlement that should be celebrated as an integral element of the cultural life of the residents.

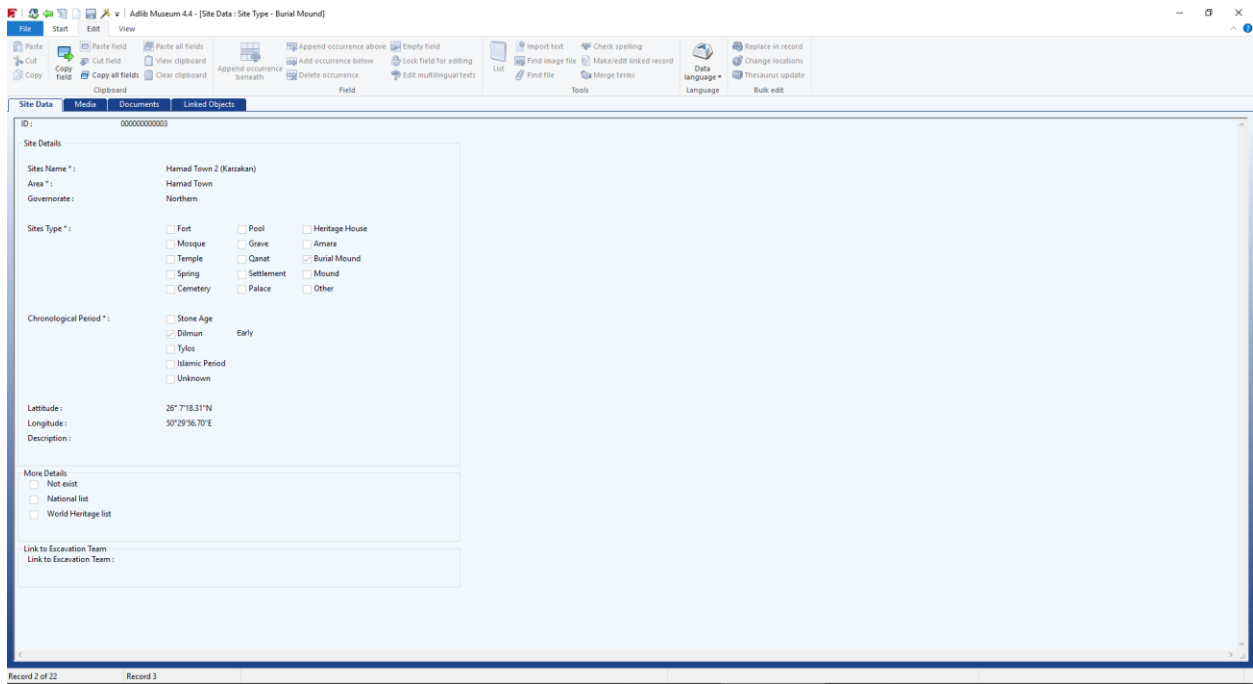
b. Documentation

Bahrain Authority for Culture and Antiquities is in the process of developing a digitized library called 'AdLib' for the Directorate of Archaeology and Museums. The library aims at providing brief information with an image with storage location information of the artifacts, manuscripts, excavation reports and allows attaching specific documents on the profiles.

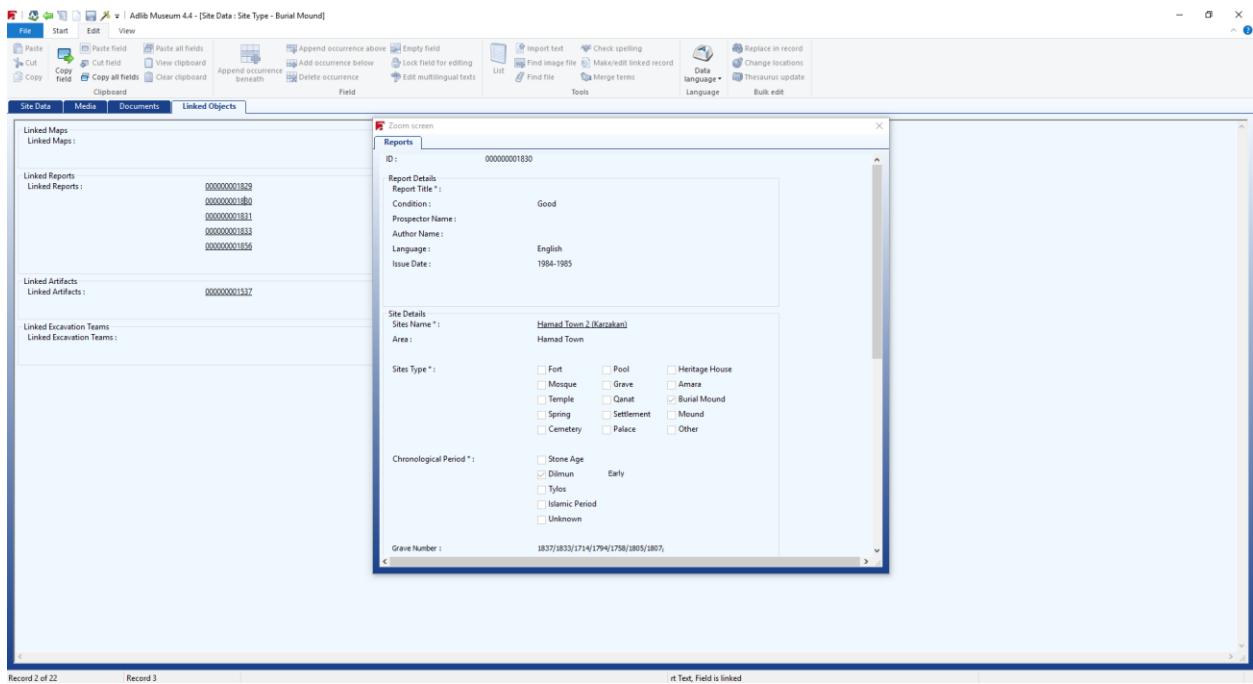
The Adlib software is developed to denote the computer programs, with which one is able to manage large quantities of information in a structured manner. The working logic of the Adlib system is rather simple. The software has the capacity to process the data and the application provides the interface to present the data in an organized way. It is structured much like a card tray, with related data (e.g. from a magazine) being stored together. In Adlib however, the equivalents of cards are called records. A collection of records is referred to as a database rather than a card tray, and a subset (partial collection) of a database a dataset.

In an application, the database or dataset is inserted or edited. Data is entered and per subject presented on forms or tab sheets (screens), but is part of one and the same record. Indexes are used so that data can be retrieved as quickly as possible; indexes are alphabetical or numerical lists of terms with a link to the record in which such a term occurs. You can search and sort, display, print and/or store the results in different ways.

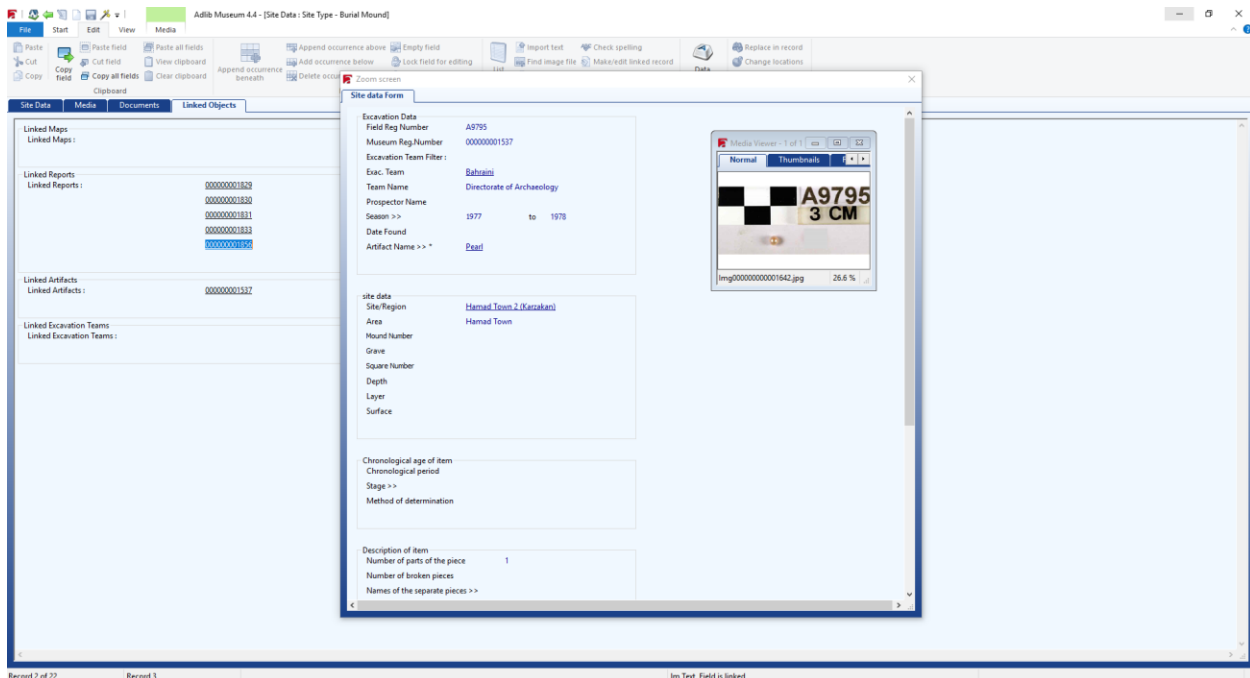
Screen shots from Hamad Town 2 (Karzakkan) Burial Mound Field are presented below as an example of the collection of documents and information. Each of the sites has their own profiles where the media, documents, mission reports, objects found and maps can be added and linked. Each document has its own data sheet with basic information and attached relevant files. For instance, the site profile include information on type, period and location. The 'Linked Report' profile provide quick data on report and site details, excavation details, and permits to link this information to a map. The linked artifacts section refer to the museum objects where the data on description of the object and its origin can be found. For more details on the system, please refer to Annex 2.



Hamad Town 2 Burial Mound Field 'Site Data'



Hamad Town 2 Burial Mound Field 'Linked Reports' profile



Hamad Town 2 Burial Mound Field 'Linked Artifacts' profile

Each of the archaeological sites have their individual profiles in the program where the datasets such as excavation reports, site reports, monitoring reports and other relevant information are collected. The artifacts profiles are also linked to the archaeological sites they were discovered, thus the information on location of the artifact can as well be found conveniently.

The system significantly reduces the document storage complications and provides a shared platform within the institution. Currently there are focal points working on different fields, for instance artifact profiles, digitalization of before the advent of electronic data collection.

Conservation of the Property

- a. What is the best conservation strategy - for the different types of burial mounds?
- b. How conservation measures are prioritized for such big number of mounds, particularly the excavated and opened ones?

Dilmun Burial Mounds Management Unit and Bahrain Authority for Culture and Antiquities experts are still reviewing the best conservation strategy for the burial mounds. By the end of 2018, DBM Unit organized a consultancy visit with Mr Roberto Nardi from Centro di Conservazione Archeologica (CCA) in Rome in order to initiate a design of a holistic conservation strategy for all burial mounds proposed for nomination. The followed principle is to monitor closely the speed of decay in the state of conservation of the property components in order to identify the most suitable conservation approach. An additional scope of the conservation strategy is to identify the effects of development in the surroundings of the

fields and the climate change. An environmental screening is envisaged to study the changing wind directions and speed, temperature and humidity analysis, and pollution. It is evident that the conservation strategy will not only have separate approaches for the excavated and not excavated mounds but also for different typologies of the mounds such as chieftain, royal and late type mounds.

While the strategy develops, there are already certain guidelines and best practices examples that BACA had used over the years to conserve the mounds. First and foremost, the general approach of BACA is that of minimum intervention and reversibility, after making sure of the stability of the slopes, stones, burial chambers, alcoves and other features. Please refer to Annex 4 for an example of emergency conservation form developed by BACA. BACA team also conducted a mortar and plaster study by using XRD and Petrography. Although the study needs to be further elaborated, it gave valuable information on the original materials and construction methods, which without doubt generate a significant input for developing the appropriate conservation techniques.

As the survey phase goes on, BACA will continue with 3D scanning of the burial mounds with the usage of FARO scanner. Tests have been conducted last year by Japanese Archaeological Mission, which combined FARO with drone scans. This technique allows for data collection which is faster, more accurate and cheaper than other methods, like photogrammetry. Moreover, it is possible to combine the scans of individual mounds and create one full depiction of each site component. DBM Unit considers that repeating 3D scanning every 1-2 years could be a good way to document state of conservation information and detect deteriorations while continuing to document the site with photographs.

Since 2015, BACA uses a new format of licenses for archaeological excavations with updated provisions regarding the post-excavation treatment of sites, securing the sites during and in between the excavations seasons. Every foreign archaeological mission is required to sign the new license and commit to new obligations prior to commencement of any work. Until now, the French, Japanese and Danish Archaeological Missions have signed the new licenses, thus contributing to improvement of the post excavation conservation of the archaeological sites in Bahrain. It is noteworthy that the Danish Mission under leadership of Dr. Steffen Terp Laursen has been excavating the Royal Mound 2, which is the first example of the implementation of revised license rules directly to one of the site components of the proposed World Heritage Nomination.

Website

The DBM Management Unit has launched a preliminary webpage linked to the domain of Bahrain Authority for Culture and Antiquities. The information on the property components, their significance and location are provided in English and Arabic Language. The mentioned site is accessible at: <http://culture.gov.bh/en/authority/CulturalHighlights/DBM/>.

Annexes:

1. Excavation license for the foreign archaeological missions to Bahrain: 2017-18 License for the Moesgaard Archaeological Mission to Bahrain
2. Adlib documentation system, Karzakkan 1978
3. Dilmun Burial Mounds permanent exhibition of National Museum of Bahrain: Hall of Graves
4. Example of Emergency Conservation Form
5. Press coverage of one of the cleaning campaigns in A'ali (in Arabic language)



مملكة البحرين
Kingdom of Bahrain
وزارة الثقافة
Ministry of Culture



Licence for Archaeological Excavations in the Kingdom of Bahrain

pursuant to the provisions of

Decree-Law No. 11 of 1995 concerning the Protection of Antiquities

Kingdom of Bahrain
Bahrain Authority for Culture and Antiquities



Licence, issued on 21st March, to perform explorations, excavations, conservation, maintenance and research of the Early Dilmun Royal Mound 2 (also known as 'Mound Q' and 'Mound no. 63.467'), at the site of A'ali Royal Mounds, inscribed in the Register of National Heritage, located in the A'ali Settlement in the Northern Governorate, hereinafter referred to as the 'site'.

by:

the Bahrain Authority for Culture and Antiquities, having its address at the Bahrain National Museum, P.O. box 2199, being the body in charge of supervising all matters related to Archaeology, represented by the President of Bahrain Authority for Culture and Antiquities, hereinafter referred to as the 'licenser';

to:

the Moesgaard Archaeological Mission, having its address at the Moesgaard Museum, Moesgaard Alle 15, 8270 Højbjerg, Denmark, represented by Dr. Steffen Terp LAURSEN, hereinafter referred to as the 'licensee';

The licensee hereby acknowledges the provisions of the Decree-Law No. 11 of 1995 concerning the Protection of Antiquities and accepts the following obligations, terms and conditions:

- I. The preamble and the application for licence for archaeological excavations dated on 27th October 2016 submitted by the Moesgaard Archaeological Mission are considered as integral part of this licence.
- II. The license is valid for a period of 2 (two) years from the date of its issue.
- III. The licensee shall commence the project on the date of 18th of February 2017. If the licensee fails to do so, the licenser may nullify the licence.
- IV. The licensee shall carry out excavations on the site for the minimum period of 6 (six) weeks in each year. The official head of the excavation team is requested to be present in the Kingdom of Bahrain during all the excavation season. Any absence shall be clearly justified to the Directorate of Archaeology and National Heritage. In any case, an experienced member of the excavation team must be officially appointed to replace and represent him or her.
- V. The licensee is obliged to:
 - A. To document the archaeological site and all excavated antiquities in accordance with the common standards, and prepare a collection of photographs of the general excavation works, and excavated movable and immovable antiquities.



- B. At the conclusion of the validity period covered by this licence, to record all antiquities and provide the licenser with all original copies one by one in a special record, together with a comprehensive report. This record is to include all scientific data of the antiquities.
- C. Not to remove any part of the discovered archaeological structure or apply any modification without the consent of the Directorate of Archaeology and National Heritage.
- D. To ensure preliminary maintenance of discovered antiquities and the excavated site during the excavation season in accordance with the common standards in this respect, and in collaboration with the concerned unit of the Directorate of Archaeology and National Heritage. This includes taking preventive protection measures against the erosion, collapse or other natural factors.
- E. To preserve the state of conservation of the site at the end of each season. Back-filling or other measures as well as financing thereof shall be agreed upon with the licenser. In case any urgent conservation measure needs to be taken, the licenser must be informed immediately.
- F. To apply the cataloguing system of the Bahrain National Museum when describing and numbering the excavated movable antiquities. The said cataloguing system must be used in all reports, publications and photographic documentations. Directorate of Museums shall provide necessary assistance in the application of the system, such as issuing the numbers to be used. The use of said cataloguing system shall not preclude the parallel application of additional system preferred by the licensee.
- G. To provide the Directorate of Archaeology and National Heritage with information on excavation works in progress every 15 (fifteen) days. The said Directorate may release this information. The licensee is not to announce any information on excavation works in the press or any other media before informing the said Directorate and obtaining its written consent.
- H. To submit a report at the end of each season, accompanied by drawings, pictures and provisional excavation plan.
- I. To submit a scientific detailed report on the results of excavations in a period not exceeding one year from the end of each season. This report shall be accompanied by relevant drawings and photographs, and by any additional information required by the Directorate of Archaeology and National Heritage. In case of an extraordinary discovery, the report may be jointly published by the licenser and the licensee in a way and quantity mutually decided based on the available budget.
- J. To deliver all excavated movable antiquities at the end of each season to the Directorate of Archaeology and National Heritage and transport them to a location specified by the said Directorate, and not to remove them from the excavation site before obtaining the Directorate's consent. Transportation of large or fragile pieces shall be priorly discussed with the Directorate which shall provide assistance for this process. Bulk material may be delivered only after review of the written justification specifying its significance.



- K. To jointly publish the scientific work with the Bahrain Authority for Culture and Antiquities, within the five years from the date of ending of the excavation project. Otherwise the licensor may publish the scientific work or its part itself or may allow any other individual or body to do so after obtaining a no objection certificate from the licensee.
- VI. The licensor shall appoint one archaeologist as a representative on the site. The licensee is obliged to enable him or her to view and supervise excavation works, findings and inspect records of antiquities.
The said Directorate may appoint additional representatives who shall be allowed to visit the excavation site whenever they so desire. The licensee is to allow visits of archaeologists provided that they maintain the scientific copyrights of the licensee.
- VII. A. The licensee shall be exempted from paying any custom duties for the instruments and equipment imported to and taken back from the Kingdom of Bahrain.
B. If the licensee relinquishes these instruments and equipment in favour of the Directorate of Archaeology and National Heritage or to national archaeological missions, it shall be exempted from paying custom duties. If the licensee disposes of this equipment to any other parties in the Kingdom of Bahrain it shall pay the custom duties.
- VIII. A. The Directorate of Archaeology and National Heritage may cooperate with the licensee in carrying out of the excavations. The cooperation shall not require additional financial responsibilities from the licensor, except of those listed below.
B. The licensor shall provide, or cover the costs of, the accommodation of the licensee team, one car, and the local labour force needed for the survey and excavations. The licensor shall not be responsible in any way for the salaries of the licensee team, their transportation costs or the treatment of information of the finds.
C. In extraordinary cases the licensor may support financially the treatment of information of the exceptional finds, after signing a separate agreement with the licensee.
- IX. In case of suspension of the excavations by the licensee for one season without an acceptable excuse, the licensor may nullify the licence.
- X. The Directorate of Archaeology and National Heritage may request the licensee to train the employees of the licensor, during the excavation seasons, in the latest applied methods in survey and excavations. The details of the training, in particular the number of the trainees, may be agreed upon by the said Directorate and the licensee in a separate agreement.



- XI. All excavated antiquities found by the licensee are properties of the Kingdom of Bahrain and should not be relinquished, especially those that form integral collections representing the civilisations, history or handicrafts of the Kingdom.
- XII. If the licensee breaches any obligation, term or condition stipulated in the clauses of this license, or any other provisions of the Decree-Law No. 11 of 1995 concerning the protection of Antiquities, the licensor may suspend excavation works immediately till the breach is stopped. If the licensor deems this breach serious, it may nullify this licence.
- XIII. The provisions of Decree-Law No. 11 of 1995 concerning the protection of Antiquities complement the clauses of this licence. The said law shall be referred to at time of disputes in particular in the matters relating to the excavations, protection and maintenance of antiquities.
- XIV. This licence is issued to the applicant in the city of Manama on 21st March 2017 in two original copies, one of which is kept with the Directorate of Archaeology and National Heritage, the other is handed to the licensee to put into effect accordingly.

Signed by the authority concerned and the licensee.

**Representative of the Moesegaard
Archaeological Mission**

**President of the Bahrain Authority for
Culture and Antiquities**

Steffen Terp Laursen

Mai bint Mohammed Al Khalifa

Start Edit View

Back Restart

First Previous Next Last

Edit New

Delete Copy Save History Derive Private cloud

Expert search Query by form

Pointer files Write set Add Remove

Mark record Toggle marks

Remove all marks View marked records Keep marked records

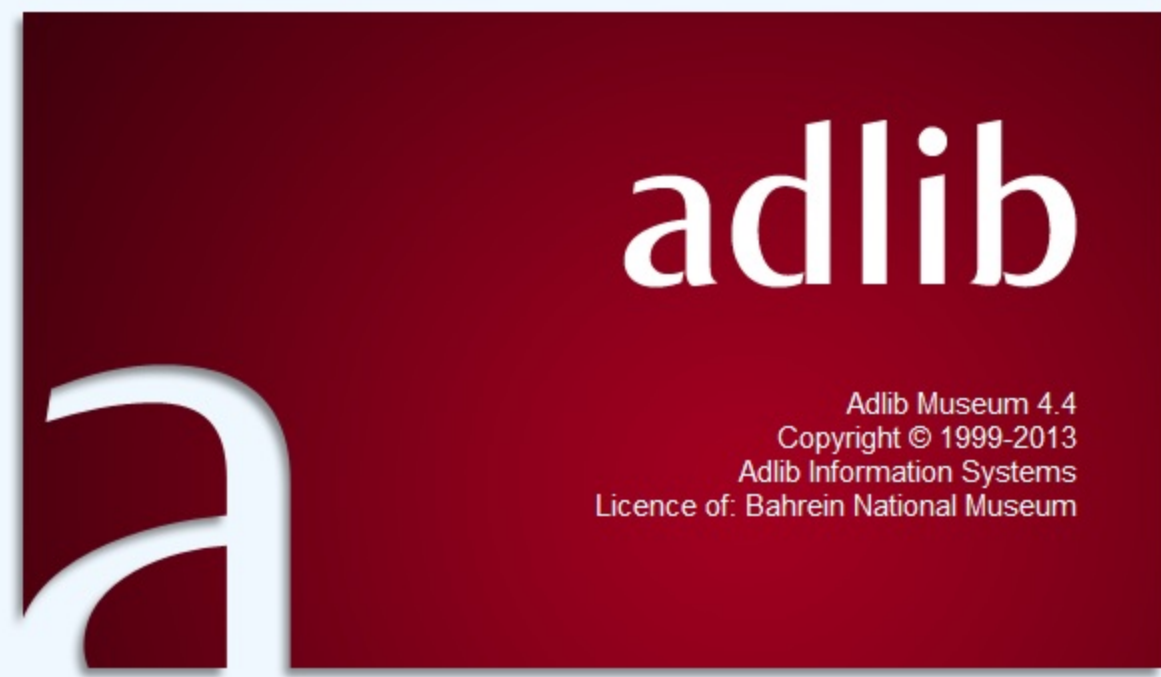
And Or Not

Sort

Print label

Upload record(s) Remove record(s)

Collection Cloud



adlib

Adlib Museum 4.4
Copyright © 1999-2013
Adlib Information Systems
Licence of: Bahrein National Museum

Adlib Museum 4.4

Start Edit View

Back Restart First Previous Next Last Edit New Delete Copy Save History Derive Private cloud Expert search Query by form Pointer files Write set Add Remove Mark record Toggle marks Remove all marks View marked records Keep marked records And Or Not Sort Print label Upload record(s) Remove record(s) Collection Cloud

Authentication

User name: fidaa

Password: ●●●●●●

Domain:

OK Cancel

Adlib Museum 4.4

Start Edit View

Back Restart First Previous Next Last Edit New Delete Copy Save History Derive Private cloud Expert search Query by form Pointer files Write set Add Remove Mark record Toggle marks Remove all marks View marked records Keep marked records And Or Not Sort Print label Upload record(s) Remove record(s)

Back Navigation Record Search mode Pointer files Marking Refining Sorting Print Collection Cloud

Search wizard - Step 1 of 4

Select database

- Manuscripts
- Documents
- Maps
- Reports

Description

Select the database you want to use

< Back Next> Cancel Help

[ar-BH]

Inbox - fidaa@c... Adlib Museum 4.4 Untitled - Paint Untitled - Paint Untitled - Paint

EN 5:38 PM 18/2/2019

Adlib Museum 4.4 - [Reports]

Start Edit View

Back Restart First Previous Next Last Edit New Delete Copy Save History Derive Private cloud Expert search Query by form Pointer files Write set Add Remove Mark record Toggle marks Remove all marks View marked records Keep marked records And Or Not Sort Print label Upload record(s) Remove record(s)

Search wizard - Step 2 of 4

Select access point

SiteType.Mosque	Ref.Map.Number	Period.Dilmun
SiteType.Grave	Current location	Period.Unknown
SiteType.Amara	Current location name	Period.Tylos
SiteType.Temple	Normal location	SiteType.Palace
SiteType.Qaant	Normal location name	
SiteType.BurialMound	SiteType.Other	
SiteType.Spring	SiteType.Other.Name	
SiteType.Settlement	Season.Date.To	
SiteType.Mound	Season.Number	
SiteType.Cemetery	Team.Name	
Excavation.Team	Period.StoneAge	
Season.Date.From	Period.IslamicPeriod	

Description
Select the access point you want to search

< Back Next> Cancel Help

Start Edit View

Back Restart First Previous Next Last Edit New Delete Copy Save History Derive Private cloud Expert search Query by form Pointer files Write set Add Remove Mark record Toggle marks Remove all marks View marked records Keep marked records And Or Not Sort Print label Upload Remove record(s) record(s) Collection Cloud

Search Screen - Reports - [ID = ...]

- 000000001818
- 000000001824
- 000000001829
- 000000001830
- 000000001831
- 000000001832
- 000000001833
- 000000001834
- 000000001839
- 000000001840
- 000000001841
- 000000001842
- 000000001843
- 000000001844
- 000000001845
- 000000001846
- 000000001847
- 000000001848
- 000000001852
- 000000001853
- 000000001856

ID : 000000001829

Report Details

Report Title * : Karzakan Site 1978/
التنقيب في موقع كرزكان 1978

Condition : Good

Prospector Name : Faiez Al Tarawna/ فايز الطراونة

Author Name : Faiez Al Tarawna/ فايز الطراونة

Language : Arabic

Issue Date : 1978

Site Details

Sites Name * : (حقل تلال مدينة حمد 2) كرزكان

Area : مدينة حمد

Sites Type * :

<input type="checkbox"/> Fort	<input type="checkbox"/> Pool	<input type="checkbox"/> Heritage House
<input type="checkbox"/> Mosque	<input type="checkbox"/> Grave	<input type="checkbox"/> Amara
<input type="checkbox"/> Temple	<input type="checkbox"/> Qanat	<input checked="" type="checkbox"/> Burial Mound
<input type="checkbox"/> Spring	<input type="checkbox"/> Settlement	<input type="checkbox"/> Mound
<input type="checkbox"/> Cemetery	<input type="checkbox"/> Palace	<input type="checkbox"/> Other

Chronological Period * :

<input type="checkbox"/> Stone Age	
<input checked="" type="checkbox"/> Dilmun	Early
	Late
<input checked="" type="checkbox"/> Tylos	Early
<input type="checkbox"/> Islamic Period	
<input type="checkbox"/> Unknown	

Grave Number : The New Babylonian era 2, 11, 12, 16-3

Mound Number :

Square Number :

Remarks :

Grave Number : The New Babylonian era 2, 11, 12, 16-3

Mound Number :

Square Number :

Remarks :

Excavation Details

Excavation Team Filter : Jordanian

Excavation Team :

Team Name :

Season Date : to

Season Number :

Remarks : Bahraini Jordanian Expedition 1978

Registration Details

Creator Name : fidaa

Created Date : 2019-02-17

Editor Name : fidaa

Edited Date : 2019-02-18

Editor Name : fidaa

Edited Date : 2019-02-18

Editor Name : fidaa

Edited Date : 2019-02-17

Editor Name : fidaa

Edited Date : 2019-02-17

Editor Name : fidaa

Edited Date : 2019-02-17

Editor Name : fidaa

Edited Date : 2019-02-17

Start Edit View

Back Restart First Previous Next Last Edit New Delete Copy Save History Derive Private cloud Expert search Query by form Pointer files Write set Add Remove Mark record Toggle marks View marked records Keep marked records Remove all marks And Or Not Sort Print label Upload record(s) Collection Clo

Back Navigation Record Search mode Pointer files Marking Refining Sorting Print Collection Clo

Reports Media مكان التخزين Location history Document

Media
Name : Karzakan Site 1978/ موقع كرزكان 1978
File : Karzakan 1978.pdf

التنقيب في موقع كرزكان

الموسم الاول ١٩٧٨

تقرير أولي

اعداد :- فايز الطراونة

KARZAKAN EX. 1978.

1. Rebat.

FAIZ. AL TARAWNA

Click on Tools, Comment and Share to access additional features.



هيئة البحرين
Bahrain Authority for
للثقافة و الآثار
Culture & Antiquities

PRESS RELEASE

With the generous support of the private sector the highly anticipated refurbished Hall of Dilmun Graves opens to the public on June 26th 2018

The refurbishment of the Hall of Dilmun Graves at the Bahrain National Museum has finally come to a completion thanks to the generous support of the private sector and opened to the public on June 26 2018, coinciding with the UNESCO World Heritage meeting in Bahrain. Designed by French architect Didier Blin, the new hall has been fully remodelled and designed to keep up with the latest developments in the museum field, to include the latest archaeological research and to provide a new enhanced and engaging museum experience while respecting the Bahrain National Museum's mission statement. The goals of the remodelling were threefold; to significantly enhance the exhibition space, to allow the museum to exhibit its latest collection in more interdisciplinary ways, to include the latest archaeological research, and to engage a wider and more diverse audience.

The ubiquitous Burial Mounds located in the north and west part of Bahrain constitute a very original and unique funerary tradition that have captured the attention of travellers for centuries. Built in the period from c. 2250 to 1700 BCE, the Dilmun tumuli of Bahrain reflect the rise and fall of the Early Dilmun civilization on the island and the ideology of the society that produced them. From 1700 BCE onwards, the tradition of building burial mounds above the ground gradually disappeared. Nevertheless, the prominence of funerary customs remained central to the life of the Dilmunites during the Middle Bronze Age (Middle Dilmun) and the Iron Age (Late Dilmun). Despite major urban developments since the 1970s, the preserved Burial Mounds are the most notable archaeological landmark in the Kingdom of Bahrain and the densest conglomeration of tumuli from the Bronze Age found anywhere in the World.

This grounded local funerary tradition is illustrated in the newly remodelled Hall through a didactic itinerary enhanced with diverse multimedia installations. The new Hall of Dilmun Graves preserved the original reconstitution of Dilmun burial mounds that were the focus of the first exhibition, while enhancing the interpretation and presentation of the archaeological collection and introducing new multimedia installations and educational tools.

Curated with the assistance of an interdisciplinary local and international team, the new presentation, organized in thematically and chronologically, features the results of the archaeological excavations over the last decades allowing for visitors to have the most updated and comprehensive understanding of the Dilmun burial traditions and its social cultural implications. It allows the visitor to understand the historic value and uniqueness of the iconic Burial Mounds of Bahrain - currently listed on the tentative UNESCO World Heritage list.

Moreover, the curatorial approach aimed at creating a meaningful museum experience for both locals and tourists by including several layers of interpretations, enhancing storytelling and above all including local voices. The Dilmun burial mounds of Bahrain - referred to by most locals as the A'ali Mounds - have dominated the island's landscape for millennia and became an integral component of its urban and social fabric. While archaeological research has established their paramount historic significance, the burial mounds of Bahrain nevertheless represent a contested local heritage as some opt to compromise this national heritage to make space for urban development as featured through a series of interviews with Bahrainis who were asked to express their viewpoints freely.

Accessibility was also one of the paramount issues in the new presentation. While all areas of the display are made accessible to young and adult audiences, a small lift was introduced to allow disabled visitors to view the central burial reconstruction, which was not possible in the previous display. Moreover, a small forum area was created to provide a space for groups to sit, examine the finds and get a greater understanding of the burials. This forum constitutes a small gathering place for discussions and for educational activities. An educational app was developed to allow young audiences to understand the significance of the burials and their unique features.

Bahrain National Museum Curatorial Team

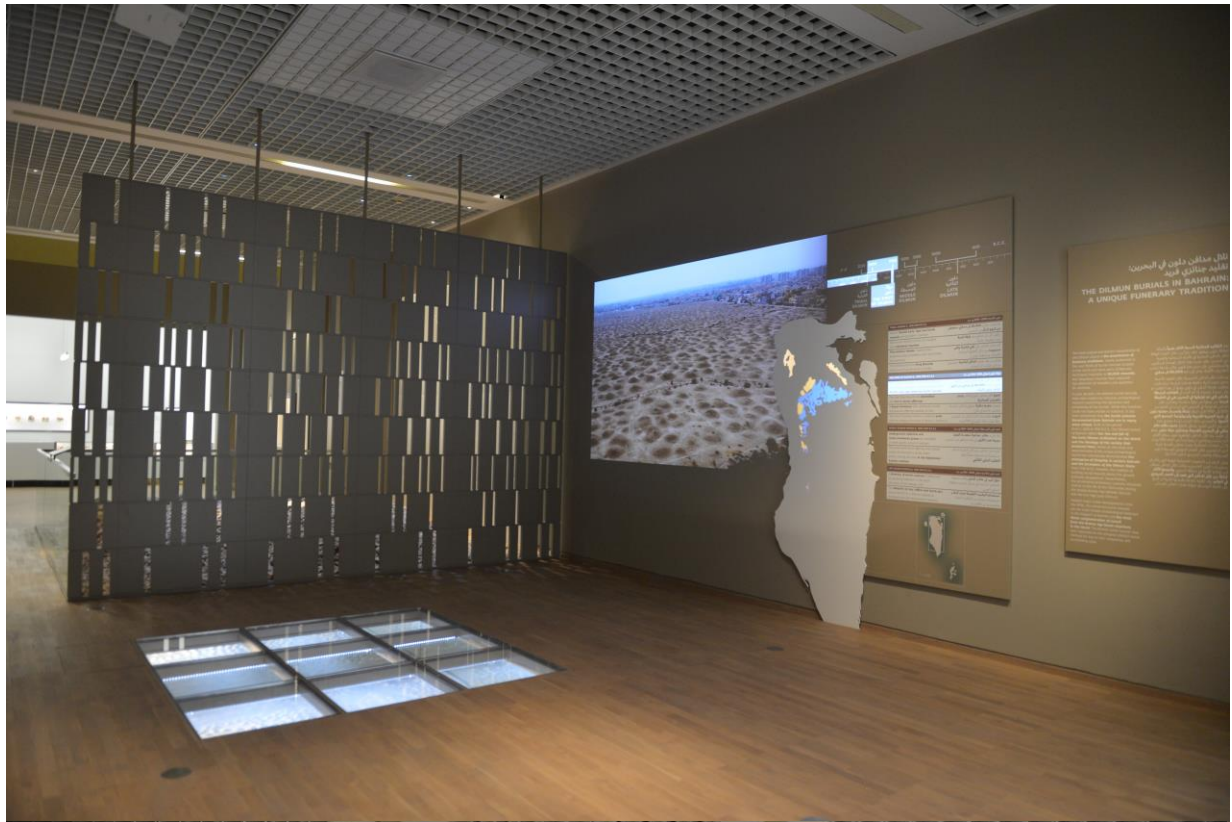
Dr Pierre Lombard

Dr Nadine Boskmati-Fattouh

<http://www.culture.gov.bh>







Emergency Conservation Form

Site	Aali Royal Mound No.1	
Type of Intervention	Reinforcement / Consolidation	
Date	March 2016	
State of Conservation	<ul style="list-style-type: none"> - Two missing areas in the southern inner lower part of the mound - Upper parts of the missing areas are very weak and not stabilized. 	
Work Description	<p>During the periodic monitoring of the site, it was observed that some stones fell from the upper part of the missing areas in the southern wall of the mound. Therefore, the conservation team decided to intervene to strengthen and stabilize the weak parts in order to prevent its deterioration.</p> <p>The work has been done through replacement the missing parts using the stones that are accumulated beside the wall.</p> <p>The original mortar and plaster have been analyzed using XRD which revealed that the main components of the mortar and plaster are Gypsum and lime. Therefore, a gypsum-lime mortar used to bond the stones and to cover them with similar plaster.</p> <p>Article 12 of Venice charter 1964 are strongly concerned by the conservation team during the work (Replacements of missing parts must integrate harmoniously with the whole, but at the same time must be distinguishable from the original so that restoration does not falsify the artistic or historic evidence).</p> <p>The replaced part is a little different from the old parts in terms of level of outer surface. So, it is easy to distinguish it.</p> <p>The color of the new intervention is a little whitish because it is not yet aged.</p>	
Illustrations	Before	After
	Attached	Attached



Before conservation



After conservation

العدد: 4984 | الجمعة 29 أبريل 2016م الموافق 22 رجب 1437هـ

تعزيزاً للسلوك الثقافي وتعميقاً للشراكة مع المجتمع المحلي

هيئة البحرين للثقافة والآثار تتعاون مع أهالي قرية عالي في حملة لتنظيف التلال الأثرية



استدعاءً للفعل الثقافي والجمالي الذي يعتزّ بالمواقع التراثية والأثرية كجزء عميق من هوية الأوطان، واحتفاءً باليوم العالمي للمعالم والمواقع الأثرية الذي صادف يوم 18 أبريل الماضي، انطلقت مبادرة للاعتناء بسلسلة التلال الأثرية بقرية عالي صباح اليوم السبت (30 أبريل/ نيسان 2016) عبر حملة تنظيف، وذلك بالتنسيق ما بين هيئة البحرين للثقافة والآثار وجمعية عالي الخيرية وبلدية المنطقة الشمالية، وبمشاركة واعدة من أهالي القرية.

وتأتي هذه المبادرة ضمن مساعي لإدماج المجتمع المحلي والأهالي في أعمال الصيانة الدورية والإجراءات الحفظية التي تقوم بها الثقافة والآثار.

وقد شكّل لقاء الأهالي في منطقة التلال فرصة جميلة للتعاون والسعي لإبراز جماليات وقيمة هذا التراث الإنساني التاريخي، حيث أطلقت عليه جمعية عالي الخيرية عنوان (مبادرة خير)، وذلك ضمن اشتغالها المتواصل الذي يحمل شعار (عالي تجمعنا).

ويعكس هذا الاندماج في المساعي الحفظية وعي الأهالي بالقيم التاريخية والإنسانية التي تحتضنها القرية، كما يمثل تحقيقاً لرؤية هيئة البحرين للثقافة والآثار التي تسعى بكافة الأدوات الثقافية أن تعمق الانتماء الوطني، وتنمي الحس الجماعي بالمسؤولية اتجاه المواقع التراثية وأبعاد الهوية الإنسانية في المنطقة.

عبر هذه الحملة، أكد القائمون من جهة الثقافة: (نحن الآن أمام خطوة استباقية تدعم المساعي العالمية لتكوين شراكات حقيقية وفاعلة ما بين الجهات الرسمية المسؤولة عن الآثار وما بين أهالي المنطقة. لا يمكن لأثر أو تراث أن يبقى في مأمن ويحتفظ بقيمته ما لم يؤمن به ناسه وأهله، وخطة التنظيف وإن بدت بسيطة في فكرتها، إلا أنها في الواقع سلوك يعكس ثقافة المجتمع، وتبدي حرصاً على تفاصيل هذا المكان). وعن مشاركة الأهالي، أوضحت الثقافة أن المواقع الأثرية والتراثية ترتبط اليوم بمفاهيم واسعة تتعدى المسؤولية الفردية والرسمية، فكما تمثل هذه المواقع نتاجاً إنسانياً مشتركاً، فاستدامتها تتطلب سلوكيات ثقافية جماعية، أكدت عليها العديد من المواثيق والاتفاقيات الدولية والعالمية.

تأتي هذه الشراكة مع أهالي قرية عالي موازية للعديد من المبادرات الثقافية المعنية بالآثار التي أطلقتها الهيئة في وقت سابق، حيث أنجزت بمعية المجتمعات المحلية العديد من تلك المشاريع، من بينها ترميم جامع بوري القديم الذي يُعدّ من أقدم المساجد في البحرين، مسجد المعاودة في مدينة المحرق القديمة، مسجد العذار في قرية كرانة، ومشروع التنقيب عن مسجد بمقبرة سماهيج، والذي اكتشف الأهالي أطلاله وبادروا إلى التعاون مع هيئة البحرين للثقافة والآثار لإبراز القيمة العمرانية الأثرية له. إن هذا الجانب الإنساني الاجتماعي يرسخ ضمناً حقيقياً للزّمان الذي يؤكد أن الحارس الحقيقي لهذا الثراء الحضاري هو إنسان المكان ذاته.

الجدير بالذكر أن تلال المدافن مُدرّجة على القائمة التمهيدية للتراث الإنساني العالمي باليونيسكو، وأن هيئة البحرين للثقافة والآثار قد أجرت دراسات تفصيلية وشاملة لصيانة وحفظ التلال الأثرية، وتشمل تصوراً لإحاطتها بأسوار حماية، وشروحات تفصيلية عن تاريخ ونوعية التلال. كما تتضمن الدراسة استراتيجيات لتفعيل التواصل مع الأهالي، وإدماجهم كشريك من المجتمع المحلي.

تم حفظ الصفحة من الرابط: <http://www.alwasatnews.com/news/1108867.html>