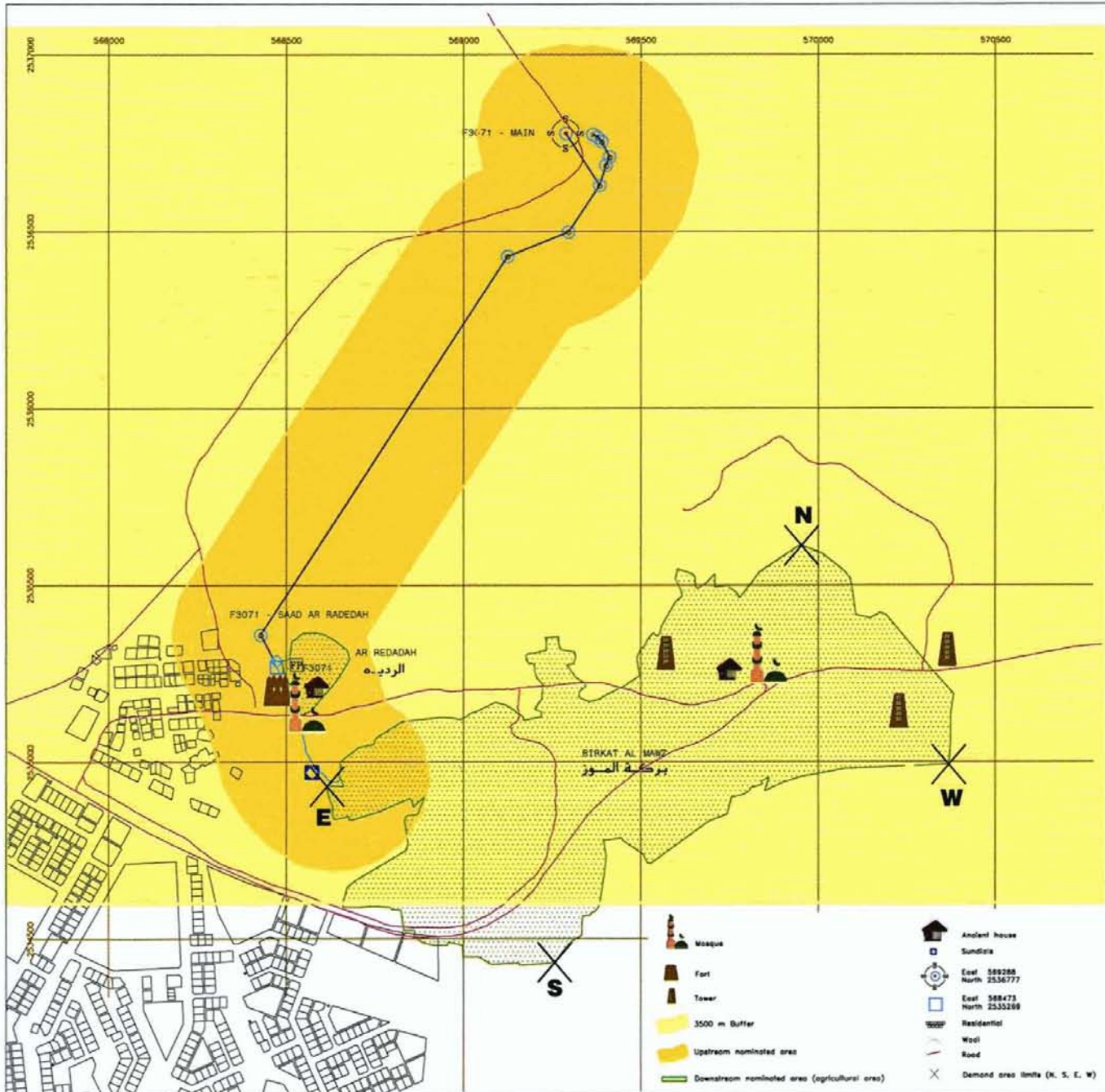


Map 1 Topographical map showing the location of the five nominated properties

Falaj Al-Khatmeen : Topographical map showing boundaries of nominated property and buffer zone



سلطنة عمان
وزارة البلديات الاقليمية والبيئة
وموارد المياه
دائرة التخطيط
مشروع حصر الافلاج

SULTANATE OF OMAN
Ministry of Regional
Municipalities, Environment
& Water Resources
Planning Department
FALAJ INVENTORY PROJECT

Falaj System	S3071	نظام الفلاج	
Falaj No.	F3071	رقم الفلاج	
Falaj Name	AL KHATMEEN	المخمين	الظفر
Wadi	AL MU'AYDIN	المعدين	الوادي
Village	BIRKAT AL MAWZ	بركة الموز	القرية
Wilayat	NIZWA	نزوى	الولاية

Legend

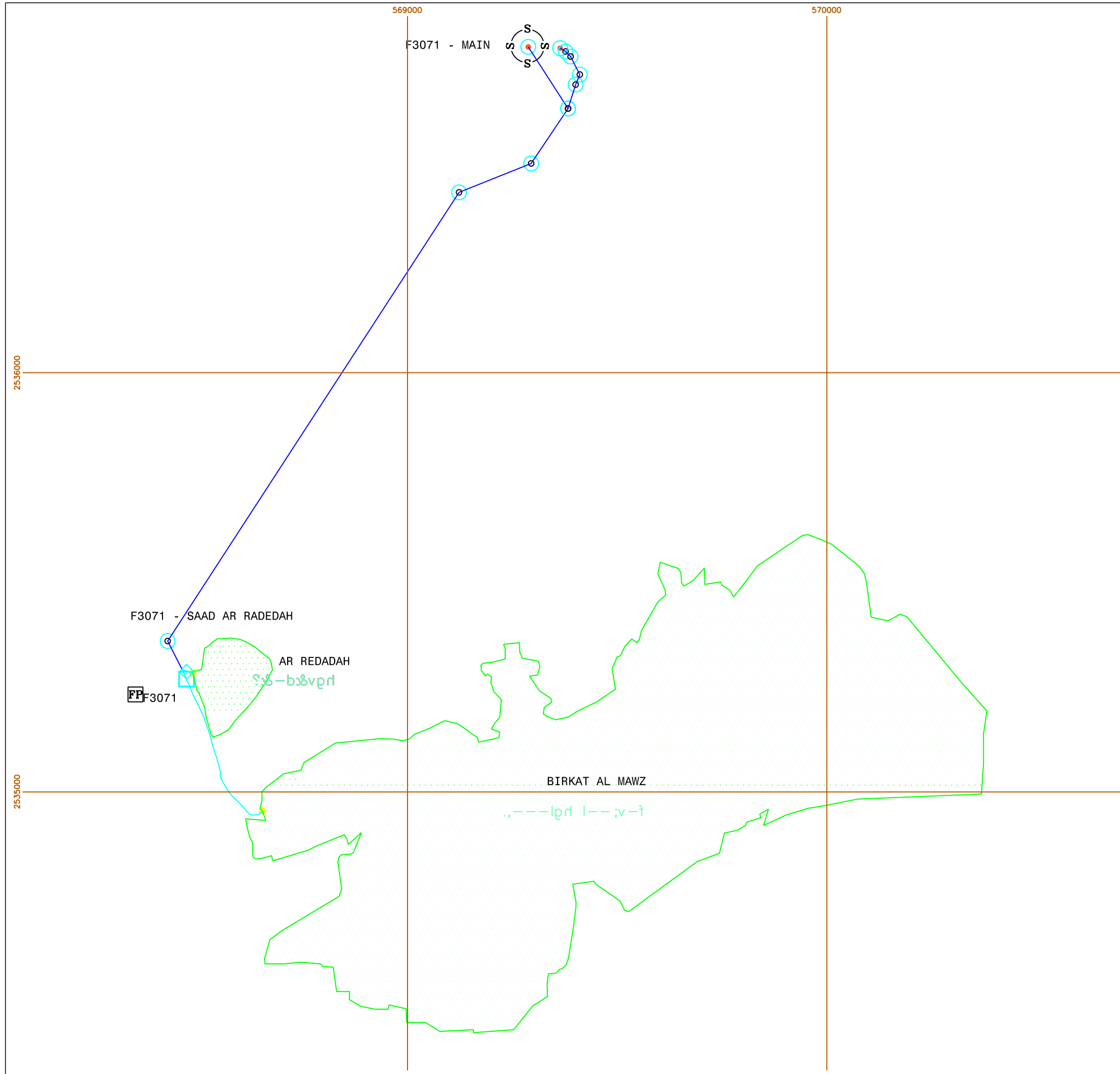
- Underground channel
- Covered surface channel
- Open surface channel - wet
- Open surface channel - dry
- Open surface channel - unknown
- Agricultural demand area
- Source - Daudi
- Source - Ghaly
- Source - Any
- Source - Dam
- Access hole
- Shoria
- Collector/Storage basin
- Supporting well
- Point location fixed by "Differential" GPS
- Point location fixed by 3 minute "Averaged" GPS
- Point location fixed by "Single fix" GPS
- Location of falaj inventory plate
- Source - Unknown type
- Measurement / sample point

Note: The siting of the falaj is based on the location of the falaj sources found by taking a GPS fix (as indicated on the map and in the legend). Location of support wells subject to a maximum of 300m inaccuracy from true position.

0 0.3 0.6 0.9 1.0
km

Datum : WGS 84 Projection : Transverse Mercator
Map compiled by MRMEWR GIS & RS section
W/G173/S3071 13-09-00 08:44

S3071



sg'k -----m ul-----hk
 ,>HvM Hgfg]dhJ HBRgldm ,Hgfdzm
 ,l,Hv] Hgldhl
]HzvM Hgjo'd'
 lav,U pwv HBtb[

SULTANATE OF OMAN
 Ministry of Regional
 Municipalities, Environment
 & Water Resources
 Planning Department
FALAJ INVENTORY PROJECT

Falaj System	S3071	نظام الفلج	
Falaj No.	F3071	رقم الفلج	
Falaj Name	AL KHATMEEN	كخ-كخ-وخر	كخر
Wadi	AL MU'AYDIN	ككب-)-لخر	"كخر,خر
Village	BIRKAT AL MAWZ	..-لخر ل--;v-ل	لبرخر
Wilayat	NIZWA	ق,.-ك	لبد,خر

Legend

- Underground channel
- Covered surface channel
- Open surface channel - wet
- Open surface channel - dry
- Open surface channel - unknown
- Agricultural demand area
- Point location fixed by "Differential" GPS
- Point location fixed by 3 minute "Averaged" GPS
- Point location fixed by "Single fix" GPS
- Source - Daudi: wet, dry, unknown
- Source - Ghaily: wet, dry
- Source - Ainy: wet, dry
- Source - Dam: wet, dry
- Supporting well
- Access hole: wet, dry, unknown
- Sharia: wet, dry, unknown
- Collector/Storage basin: wet, dry, unknown
- Location of falaj inventory plate
- Source - Unknown type
- Measurement / sample point

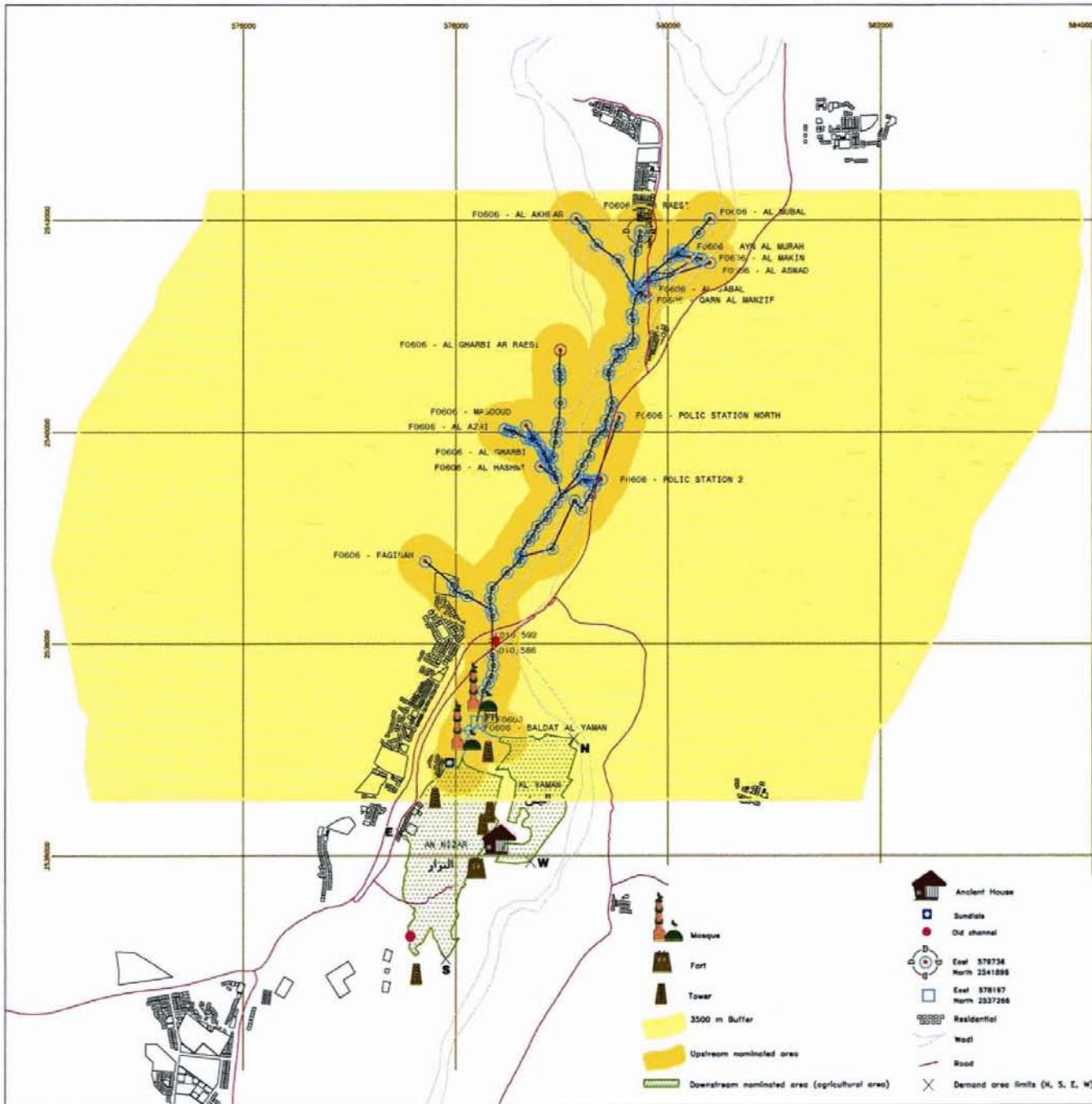
Note: The siting of the falaj is based on the location of the falaj sources found by taking a GPS fix (as indicated on the map and in the legend). Location of support wells subject to a maximum of 300m inaccuracy from true position.

N ↑

Datum : WGS 84 Projection : Transverse Mercator
 Map compiled by MRMEWR GIS & RS section
 W:/G173/S3071 13-09-00 08:44

S3071

Falaj Al-Malki : Topographical map showing boundaries of nominated property and buffer zone



سلطنة عمان
وزارة البلديات الاقليمية والبيئة
وموارد المياه
دائرة التخطيط
مشروع حصر الافلاج



SULTANATE OF OMAN
Ministry of Regional
Municipalities, Environment
& Water Resources
Planning Department
FALAJ INVENTORY PROJECT

Falaj Name	Falaj System	S0606	نظام الفلاج	
Wadi	Falaj No.	F0606	رقم الفلاج	
Village	AL MALKI		الملكي	القطي
Wilayat	HALFIN + IMTY		حلفين - ايمطي	الوادي
	AN NIZAR+ AL YAMAN		النزار - اليمن	القرية
	IZKI		ازكي	الولاية

Legend

- Underground channel
- Covered surface channel
- Open surface channel - wet
- Open surface channel - dry
- Open surface channel - unknown
- Agricultural demand area
- Source - Daudi
- Source - Daily
- Source - Any
- Source - Dam
- Supporting well
- Location of falaj inventory plate
- Source - Unknown type
- Measurement / sample point

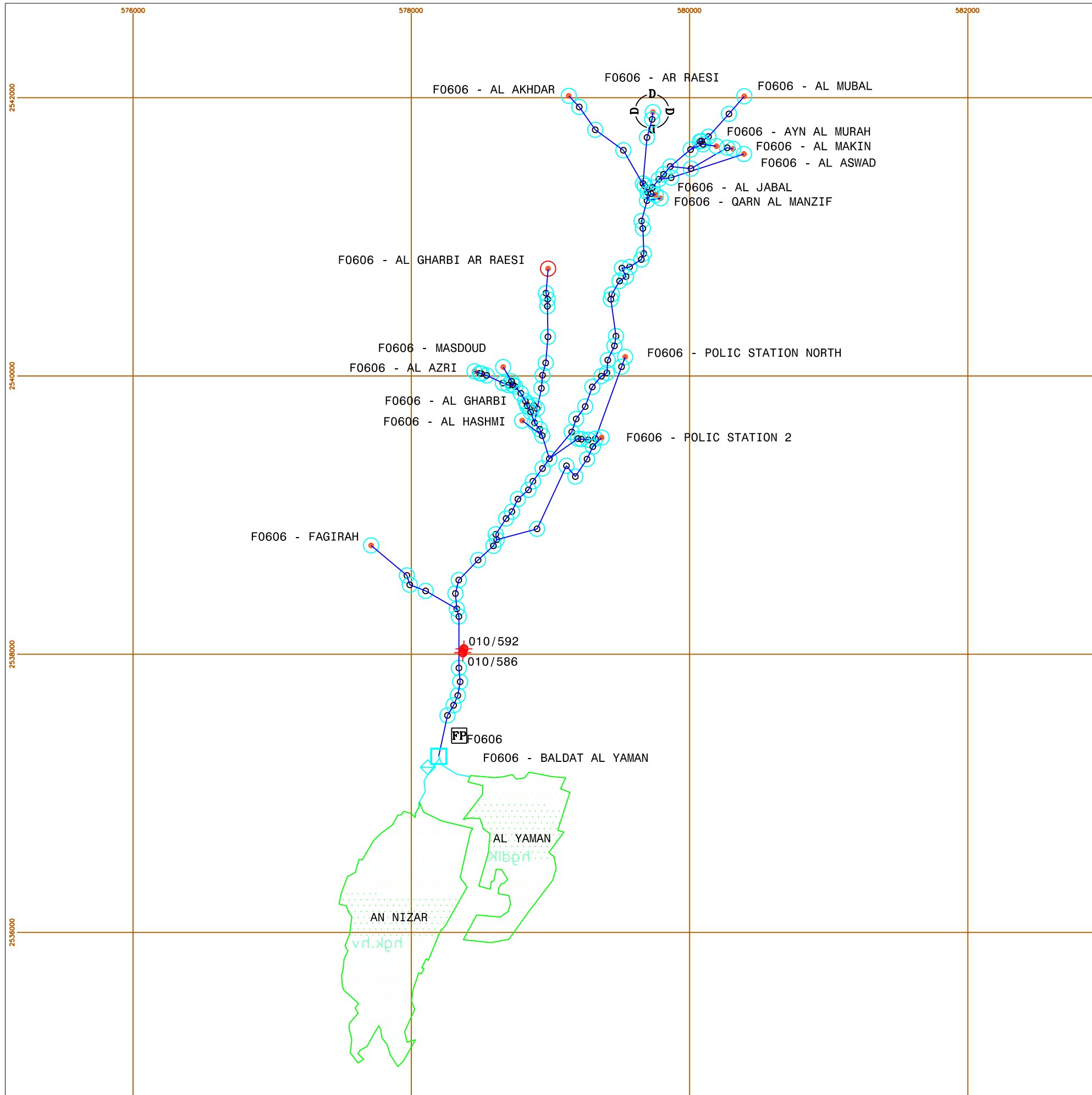
Note: The siting of the falaj is based on the location of the falaj sources found by taking a GPS fix (as indicated on the map and in the legend). Location of support wells subject to a maximum of 300m inaccuracy from true position.

Scale: 0 0.50 1.00 1.50 2.00

North arrow pointing up.

Datum : WGS 84 Projection : Transverse Mercator
Map compiled by MRNEWRS GIS & RS section
W:/0173/S0606 17-05-99 09:03

S0606



sg'k _____ m ul _____ hK
 ,>HvM Hgfg]dhJ HBrgldm ,Hgdzm
 ,l,Hv] Hgidhl
]HzvM Hgjo'd'
 lov,U pwv HBtb[

SULTANATE OF OMAN
Ministry of Regional
Municipalities, Environment
& Water Resources
Planning Department
FALAJ INVENTORY PROJECT

Falaj System	S0606	نظام الفلج	
Falaj No.	F0606	رقم الفلج	
Falaj Name	AL MALKI	الملك	الملك
Wadi	HALFIN + IMTY	الهميم - اليمتي	الهميم - اليمتي
Village	AN NIZAR+ AL YAMAN	النزار - اليمان	النزار - اليمان
Wilayat	IZKI	إزكي	إزكي

Legend

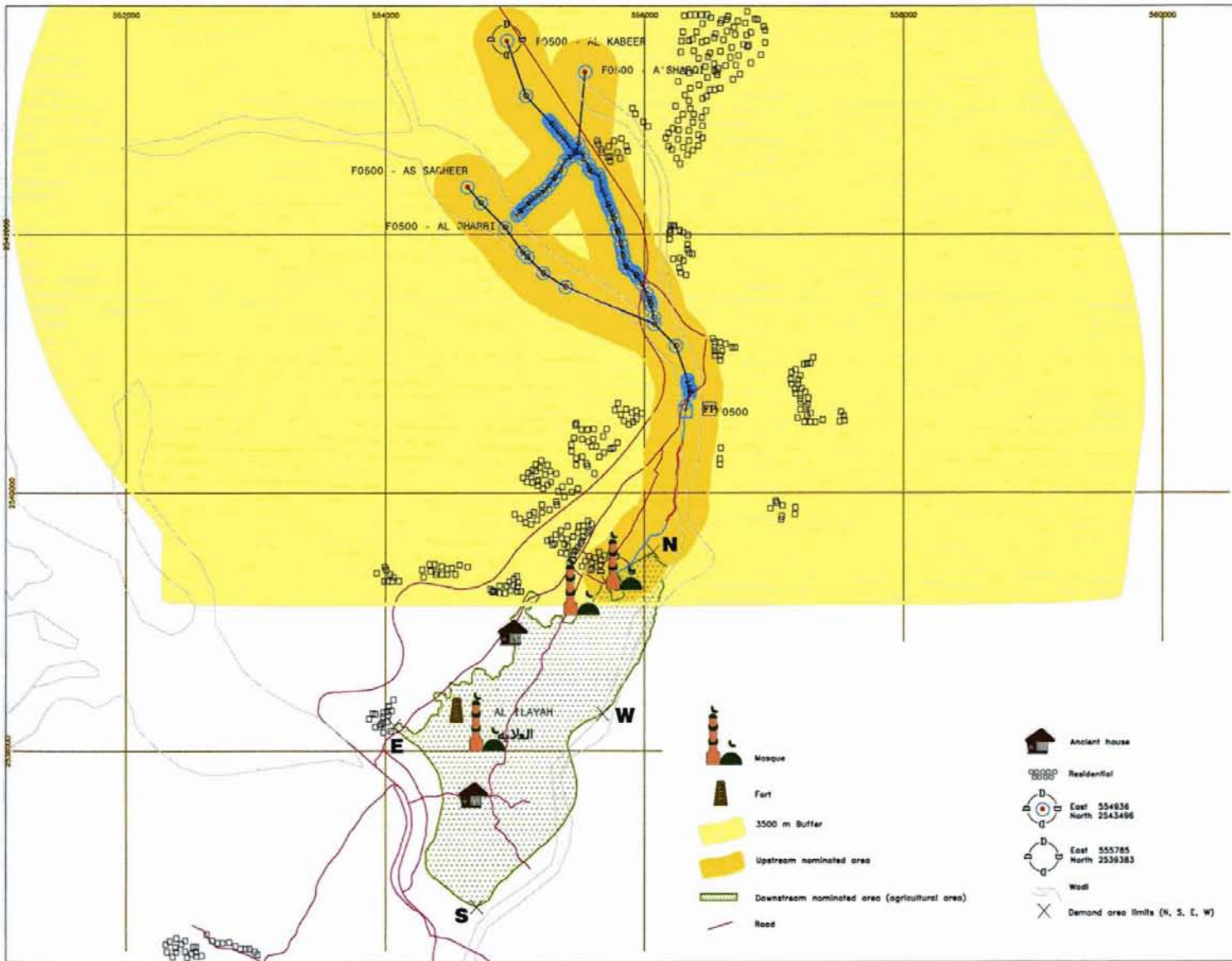
Underground channel	Covered surface channel	Open surface channel - wet	Open surface channel - dry	Open surface channel - unknown	Agricultural demand area	Point location fixed by "Differential" GPS	Point location fixed by 3 minute "Averaged" GPS	Point location fixed by "Single fix" GPS
Source - Daudi	Source - Ghaily	Source - Ainy	Source - Dam					
wet	wet	wet	wet					
dry	dry	dry	dry					
unknown								
Access hole	Sharia	Collector/Storage basin						
wet	wet	wet						
dry	dry	dry						
unknown	unknown	unknown						
			Supporting well					
			Location of falaj inventory plate					
			Source - Unknown type					
			Measurement / sample point					

Note: The siting of the falaj is based on the location of the falaj sources found by taking a GPS fix (as indicated on the map and in the legend). Location of support wells subject to a maximum of 300m inaccuracy from true position.

0 0.50 1.00 1.50 2.00

N
 Datum : WGS 84 Projection : Transverse Mercator
 Map compiled by MRMEWR GIS & RS section
 W:/G173/S0606 17-05-99 09:03

S0606



سلطنة عمان
وزارة البلديات الإقليمية والبيئة
وموارد المياه
دائرة التخطيط
مشروع حصر الأفلاج



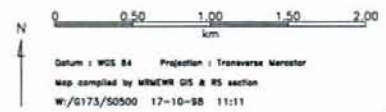
SULTANATE OF OMAN
Ministry of Regional
Municipalities, Environment
& Water Resources
Planning Department
FALAJ INVENTORY PROJECT

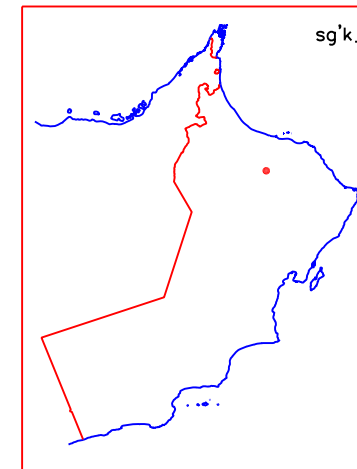
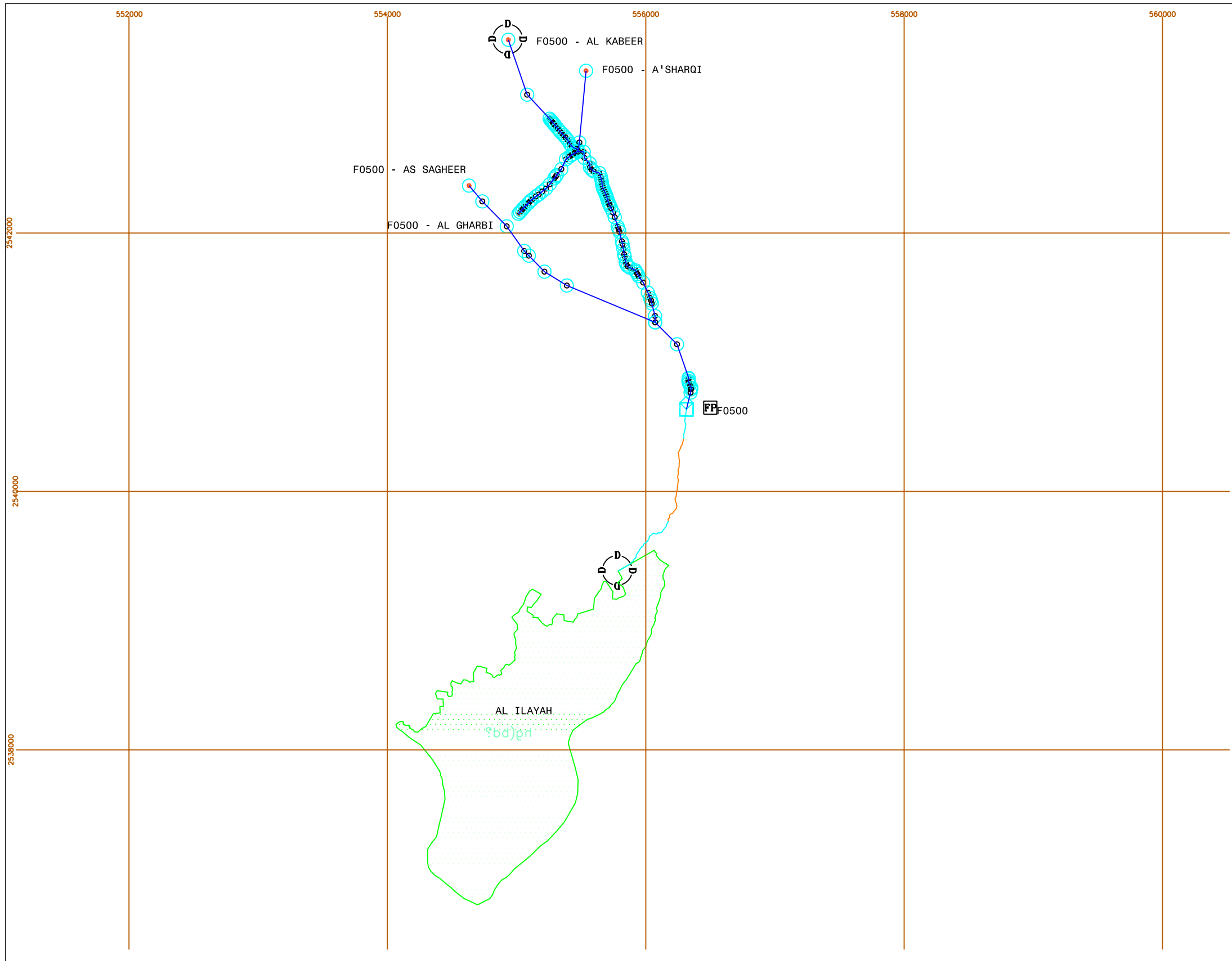
Falaj System	S0500	نظام الفلاج	
Falaj No.	F0500	رقم الفلاج	
Falaj Name	DARIS	دارس	العظمى
Wadi	AL ASYADH	الأيض	الوادي
Village	AL ILAYAH	الغلاة	القرية
Wilayat	NIZMA	نزوى	الولاية

Legend

- Underground channel
- Covered surface channel
- Open surface channel - wet
- Open surface channel - dry
- Open surface channel - unknown
- Agricultural demand area
- Source - Small
- Source - Medium
- Source - Dirty
- Source - Chilly
- Source - Aiky
- Source - Dam
- Supporting well
- Point location fixed by "Differential" GPS
- Point location fixed by 2 minute "Averaged" GPS
- Point location fixed by "Single fix" GPS
- Location of falaj inventory plate
- Source - Unknown type
- Measurement / sample point

Note: The siting of the falaj is based on the location of the falaj sources found by taking a GPS fix (as indicated on the map and in the legend). Location of support wells subject to a maximum of 300m inaccuracy from true position.





sg'k _____m ul _____hk
 ,>HvM Hgfg]dhJ HBrgldm ,Hgfdzm
 ,I,Hv] Hgldhl
]HzvM Hgjo'd'
 Iov,U pwv HBtb[



SULTANATE OF OMAN
Ministry of Regional
Municipalities, Environment
& Water Resources
Planning Department
FALAJ INVENTORY PROJECT

Falaj Name	Falaj System	Falaj No.	S0500	نظام الفلج	رقم الفلج
DARIS	S0500	F0500		نظام الفلج	رقم الفلج
AL ABYADH				2vrt8	Obldrt
AL ILAYAH				lbd)prt	lbrprt
NIZWA				G,x	lbd,prt

Legend

Underground channel	Covered surface channel	Open surface channel - wet	Open surface channel - dry	Open surface channel - unknown	Agricultural demand area	Point location fixed by "Differential" GPS	Point location fixed by 3 minute "Averaged" GPS	Point location fixed by "Single fix" GPS
Source - Daudi	Source - Ghaily	Source - Ainy	Source - Dam	Supporting well				
wet	wet	wet	wet					
dry	dry	dry	dry					
unknown	unknown	unknown	unknown					
Access hole	Sharia	Collector/Storage basin	Location of falaj inventory plate					
wet	wet	wet	Source - Unknown type					
dry	dry	dry	Measurement / sample point					
unknown	unknown	unknown						

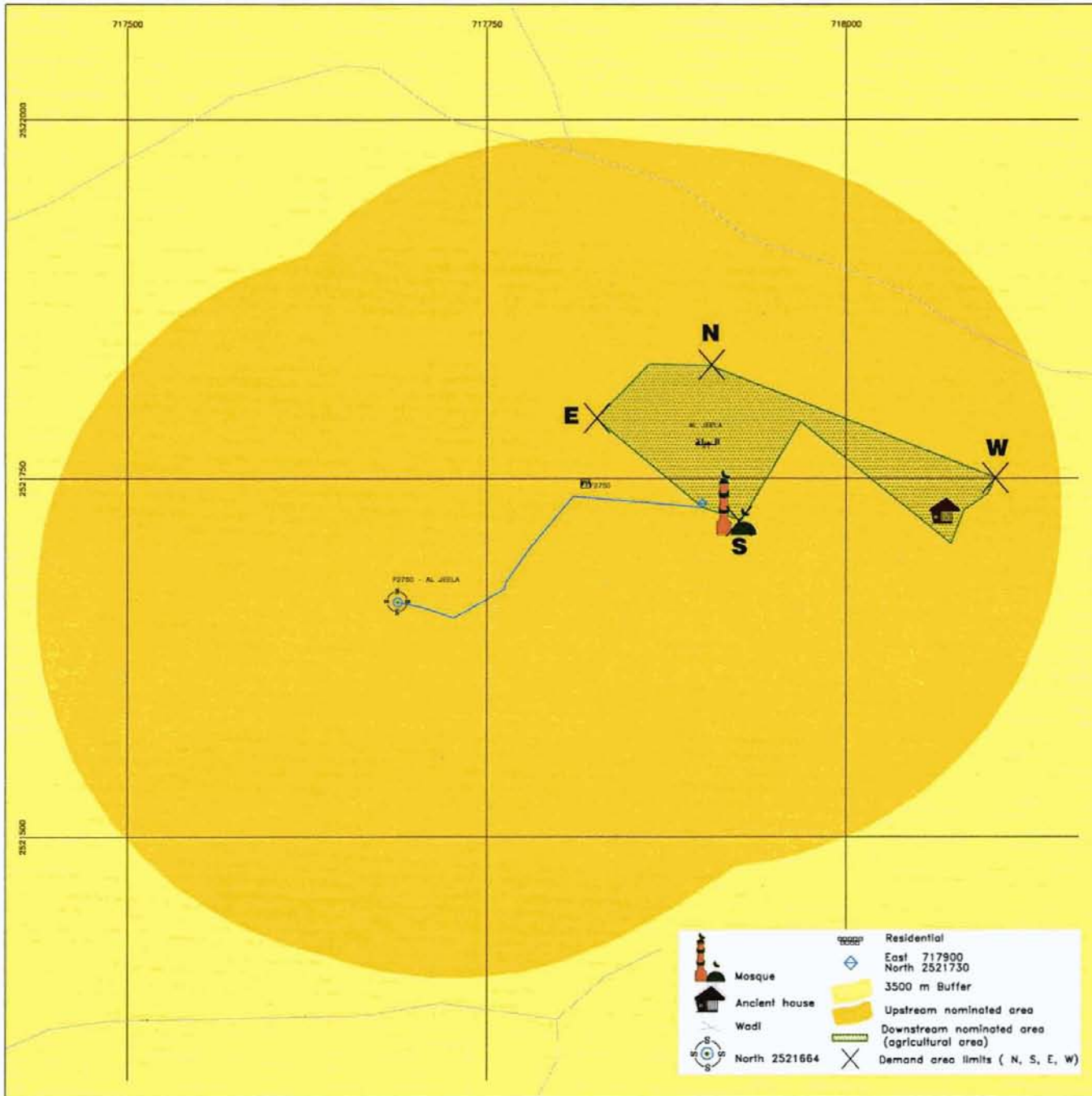
Note: The siting of the falaj is based on the location of the falaj sources found by taking a GPS fix (as indicated on the map and in the legend).
 Location of support wells subject to a maximum of 300m inaccuracy from true position.

N
 0 0.50 1.00 1.50 2.00
 km

Datum : WGS 84 Projection : Transverse Mercator
 Map compiled by MRMEWR GIS & RS section
 W:/G173/S0500 17-10-98 11:11

S0500

Falaj Al-Jeela : Topographical map showing boundaries of nominated property and buffer zone



	Mosque		Residential
	Ancient house		East 717900 North 2521730 3500 m Buffer
	Wadi		Upstream nominated area
	North 2521664		Downstream nominated area (agricultural area)
			Demand area limits (N, S, E, W)



سلطنة عمان
وزارة البلديات الاقليمية والبيئة
وموارد المياه
دائرة التخطيط
مشروع حصر الافلاج

SULTANATE OF OMAN
Ministry of Regional
Municipalities, Environment
& Water Resources
Planning Department
FALAJ INVENTORY PROJECT

Falaj System	S2750	نظام الفلاج	
Falaj No.	F2750	رقم الفلاج	
Falaj Name	AL JEELA	الجبلة	الفلاج
Wadi	ASH SHAB	الشاب	الوادي
Village	AL JEELA	الجبلة	القرية
Willayat	SUR	صور	الولاية

Legend

	Underground channel		Point location fixed by "Differential" GPS
	Covered surface channel		Point location fixed by 3 minute "Averaged" GPS
	Open surface channel - wet		Point location fixed by "Single fix" GPS
	Open surface channel - dry		
	Open surface channel - unknown		
	Agricultural demand area		

Source - Doudi	Source - Dhily	Source - Aily	Source - Dam

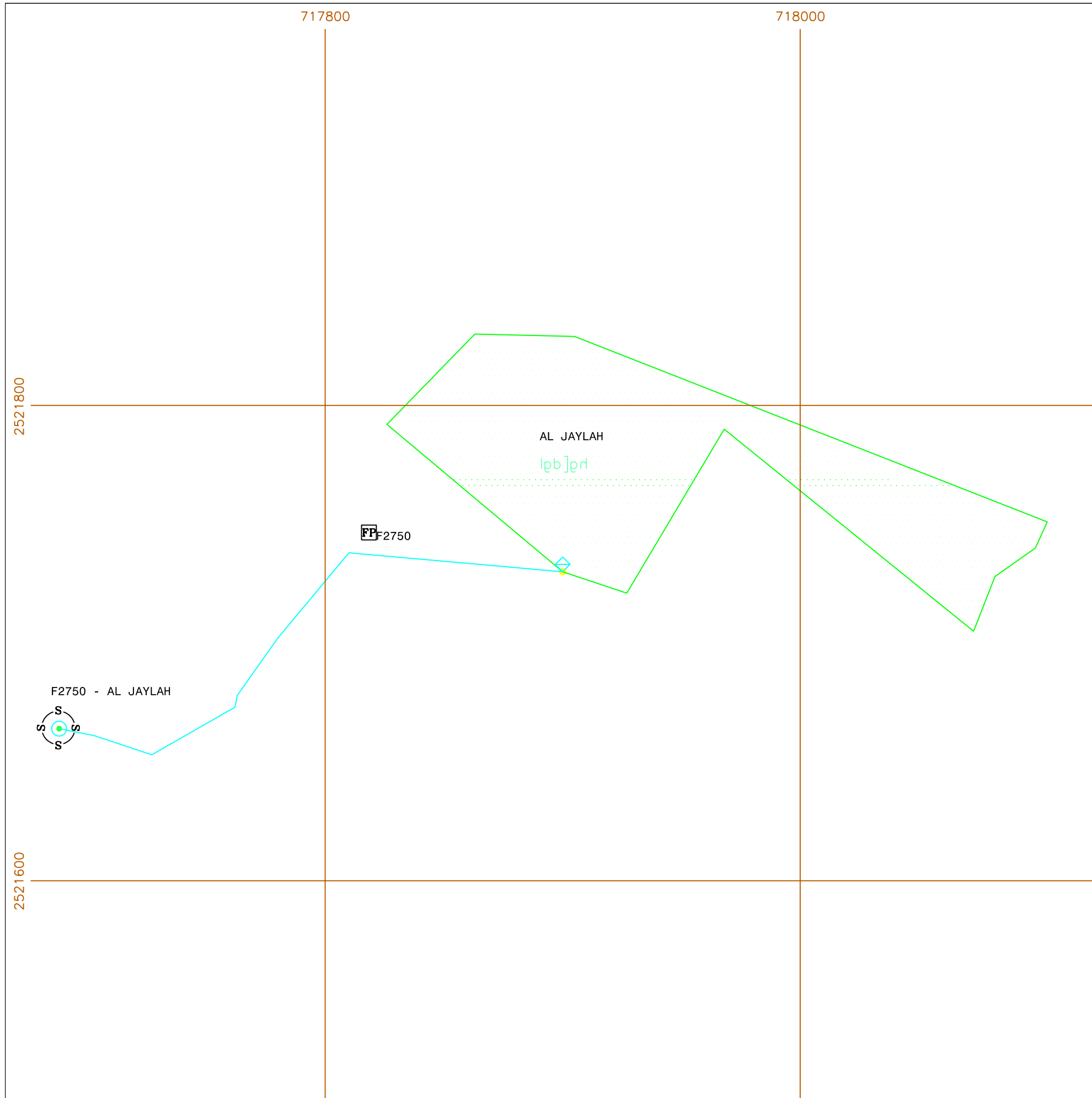
Access hole	Sharia	Collector/Storage basin	Supporting well

Note: The siting of the falaj is based on the location of the falaj sources found by taking a GPS fix (as indicated on the map and in the legend).
Location of support wells subject to a maximum of 300m inaccuracy from true position.

0 0.05 0.10 0.15 0.20 0.25
km

Datum : WGS 84 Projection : Transverse Mercator
Map compiled by WRM/EWR GIS & RS section
W./G173/S2750 22-11-98 13:14

S2750



sg'k-----m ul-----hK
,>HvM Hgfg]dhJ HBrgldm ,Hgfzdm
,l,Hv] Hgl dhl
]HzvM Hgjo'd'
lav,U pwv HBtb[

SULTANATE OF OMAN
Ministry of Regional
Municipalities, Environment
& Water Resources
Planning Department
FALAJ INVENTORY PROJECT

Falaj Name	Falaj System	Falaj No.	نظام الفلج	رقم الفلج
AL JAYLAH	S2750	F2750	lqb]prt	{p]prt
ASH SHAB			7rtoprt	"&rt,prt
AL JAYLAH			lqb]prt	lbv]prt
SUR			v,w	lbd,prt

Legend

- Underground channel
- Covered surface channel
- Open surface channel - wet
- Open surface channel - dry
- Open surface channel - unknown
- Agricultural demand area
- Point location fixed by "Differential" GPS
- Point location fixed by 3 minute "Averaged" GPS
- Point location fixed by "Single fix" GPS

Source - Daudi	Source - Ghaily	Source - Ainy	Source - Dam
wet	wet	wet	wet
dry	dry	dry	dry
unknown			

Access hole	Sharia	Collector/Storage basin	Supporting well
wet	wet	wet	FP Location of falaj inventory plate
dry	dry	dry	Source - Unknown type
unknown	unknown	unknown	Measurement / sample point

Note: The siting of the falaj is based on the location of the falaj sources found by taking a GPS fix (as indicated on the map and in the legend).
Location of support wells subject to a maximum of 300m inaccuracy from true position.

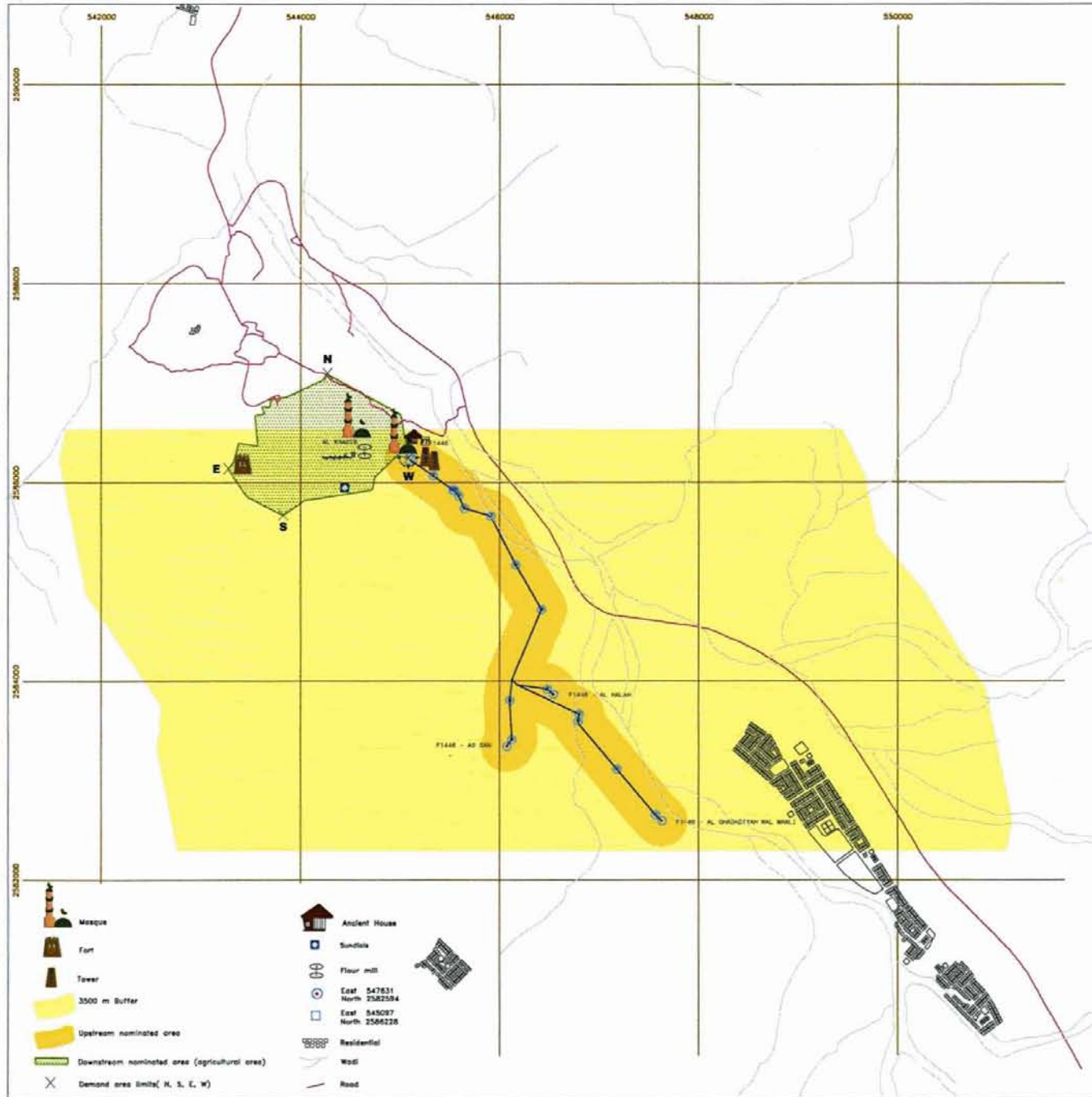
0 0.050 0.100 0.150
km

N

Datum : WGS 84 Projection : Transverse Mercator
Map compiled by MRMEWR GIS & RS section
W:/G173/S2750 22-11-98 13:14

S2750

Falaj Al-Muyassar : Topographical map showing boundaries of nominated property and buffer zone



سلطنة عمان
وزارة البلديات الإقليمية والبيئة
وموارد المياه
دائرة التخطيط
مشروع حصر الأفلاج



SULTANATE OF OMAN
Ministry of Regional
Municipalities, Environment
& Water Resources
Planning Department
FALAJ INVENTORY PROJECT

Falaj System	S1446	نظام الفلج	
Falaj No.	F1446	رقم الفلج	
Falaj Name	AL MU'YASSAR	الميسر	الفلج
Wadi	AL FARAI A' SAN HALAH	الفرعي - السن - الحلا	الوادي
Village	AL KHABIB	الخبيب	القرية
Wilayat	AR RUSTAQ	الرستاق	الولاية

Legend

- Underground channel
- Covered surface channel
- Open surface channel - wet
- Open surface channel - dry
- Open surface channel - unknown
- Agricultural demand area
- Point location fixed by "Differential" GPS
- Point location fixed by 3 minute "Averaged" GPS
- Point location fixed by "Single fix" GPS

Source - Dwell

- wet
- dry
- unknown

Source - Dhahly

- wet
- dry

Source - Ainy

- wet
- dry

Source - Dam

- wet
- dry

Access hole

- wet
- dry
- unknown

Sharia

- wet
- dry
- unknown

Collector/Storage basin

- wet
- dry
- unknown

Supporting well

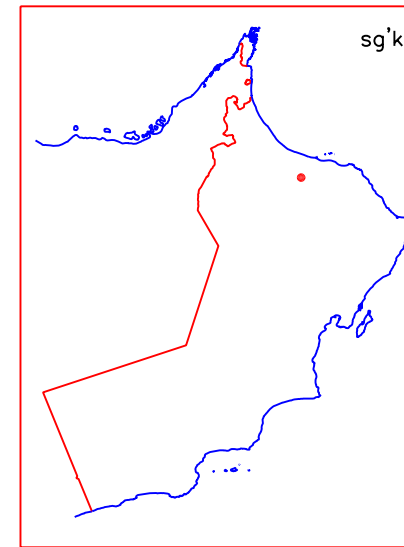
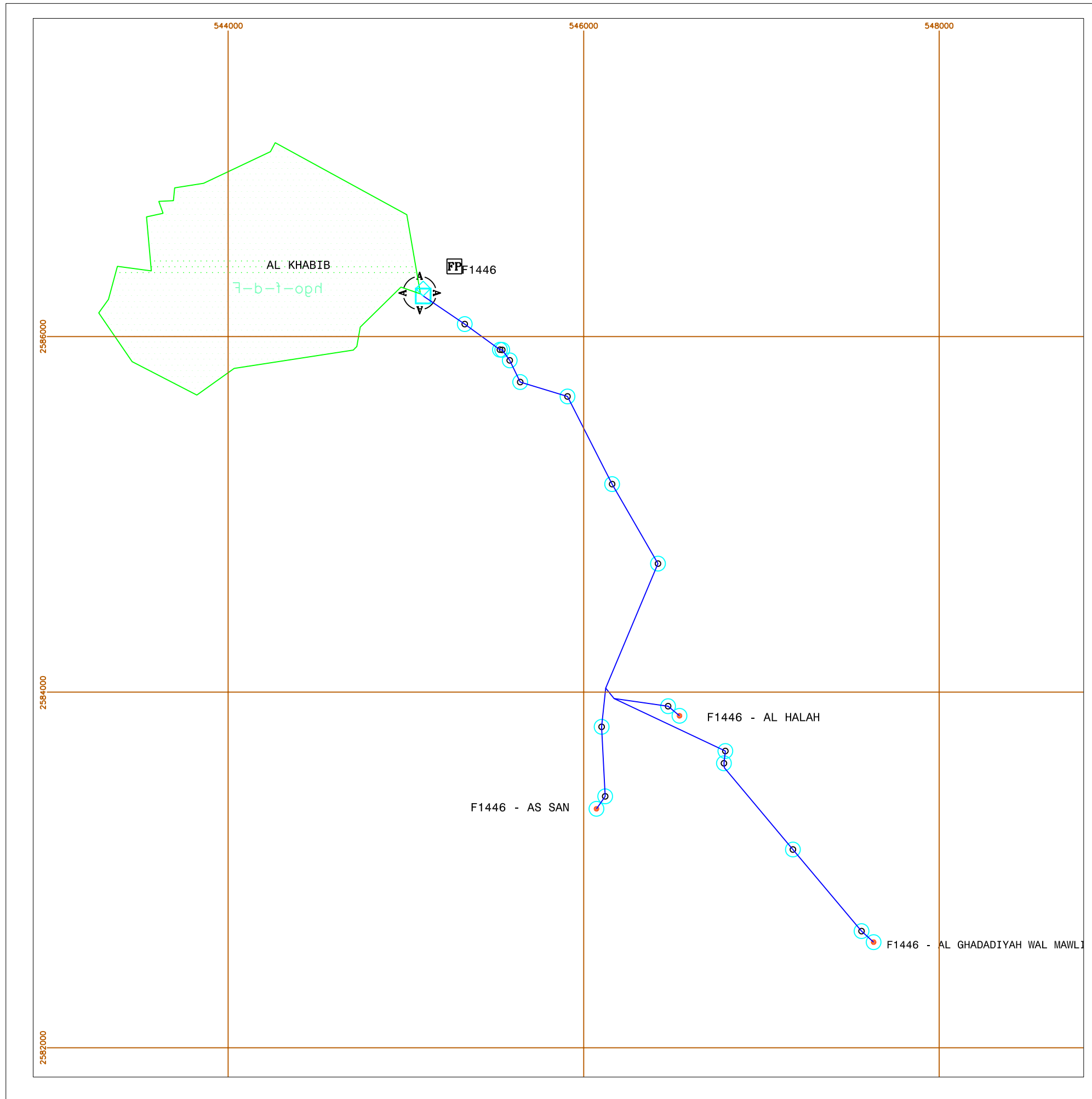
- Location of falaj inventory plate
- Source - Unknown type
- Measurement / sample point

Note: The siting of the falaj is based on the location of the falaj sources found by taking a GPS fix (as indicated on the map and in the legend). Location of support wells subject to a maximum of 300m inaccuracy from true position.



Datum : WGS 84 Projection : Transverse Mercator
Map compiled by MR/ENWR GIS & RS section
W:/G173/S1446 18-04-99 10:59

S1446



sg'k _____m ul_____hK
 ,>HvM Hgfg]dhJ HBrgldm ,Hgfzdm
 ,l,Hv] Hgldhl
]HzvM Hgjo'd'
 lav,U pwv HBtb[

SULTANATE OF OMAN
 Ministry of Regional
 Municipalities, Environment
 & Water Resources
 Planning Department
FALAJ INVENTORY PROJECT

Falaj System	S1446	نظام الفلج	
Falaj No.	F1446	رقم الفلج	
Falaj Name	AL MAYASSAR	v-z-b-lqr	}نقنق
Wadi	AL FARAI A'SAN	حادي الفرائي - 'ص-قنق	"نقنق
Village	AL KHABIB	ق-ب-قنق	لبنقنق
Wilayat	AR RUSTAQ	رقنق-ق-زقنق	لبنقنق

Legend

- Underground channel
- Covered surface channel
- Open surface channel - wet
- Open surface channel - dry
- Open surface channel - unknown
- Agricultural demand area
- Point location fixed by "Differential" GPS
- Point location fixed by 3 minute "Averaged" GPS
- Point location fixed by "Single fix" GPS

Source - Daudi: wet (blue circle), dry (red circle), unknown (grey circle)
 Source - Ghaily: wet (blue circle), dry (red circle)
 Source - Ainy: wet (green circle), dry (red circle)
 Source - Dam: wet (blue circle), dry (red circle)

Access hole: wet (blue circle), dry (red circle), unknown (grey circle)
 Shario: wet (blue square), dry (red square), unknown (grey square)
 Collector/Storage basin: wet (blue square), dry (red square), unknown (grey square)

Supporting well (red star)
 Location of falaj inventory plate (FF)
 Source - Unknown type (circle with cross)
 Measurement / sample point (diamond)

Note: The siting of the falaj is based on the location of the falaj sources found by taking a GPS fix (as indicated on the map and in the legend). Location of support wells subject to a maximum of 300m inaccuracy from true position.

0 0.50 1.00 1.50 2.00
 km

N ↑

Datum : WGS 84 Projection : Transverse Mercator
 Map compiled by MRMEWR GIS & RS section
 W:/G173/S1446 18-04-99 10:59