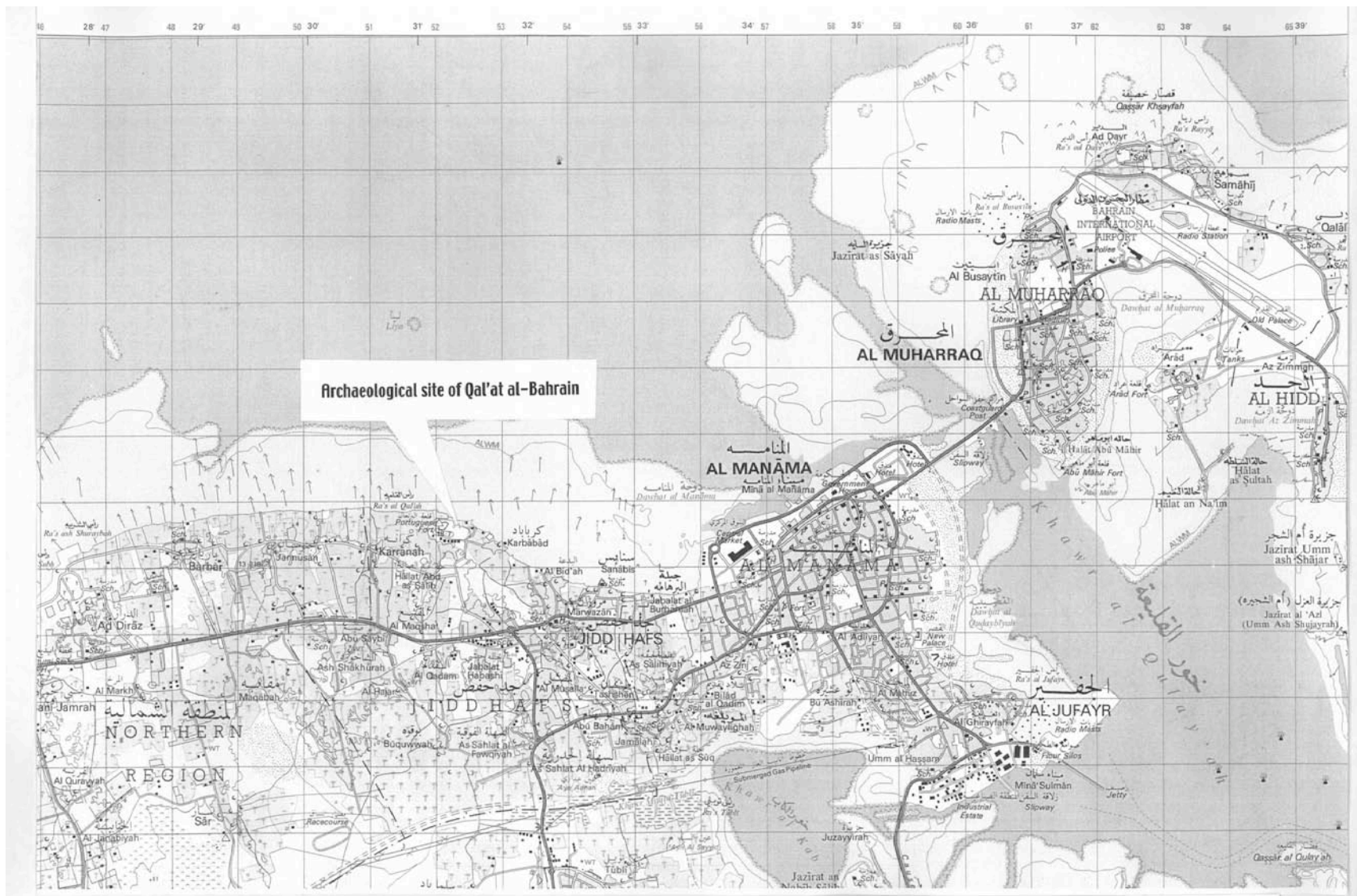
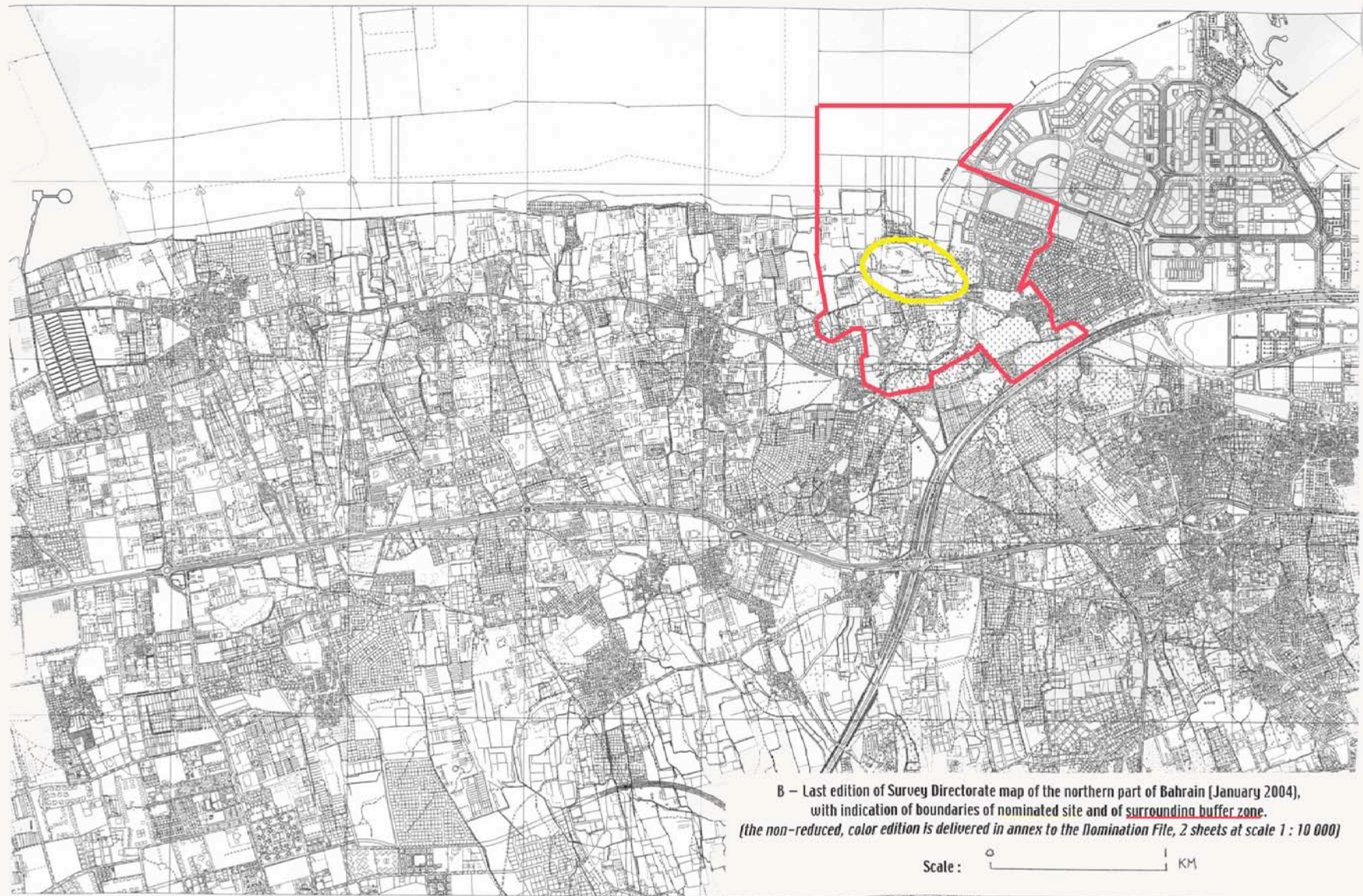


MAPS & PLANS



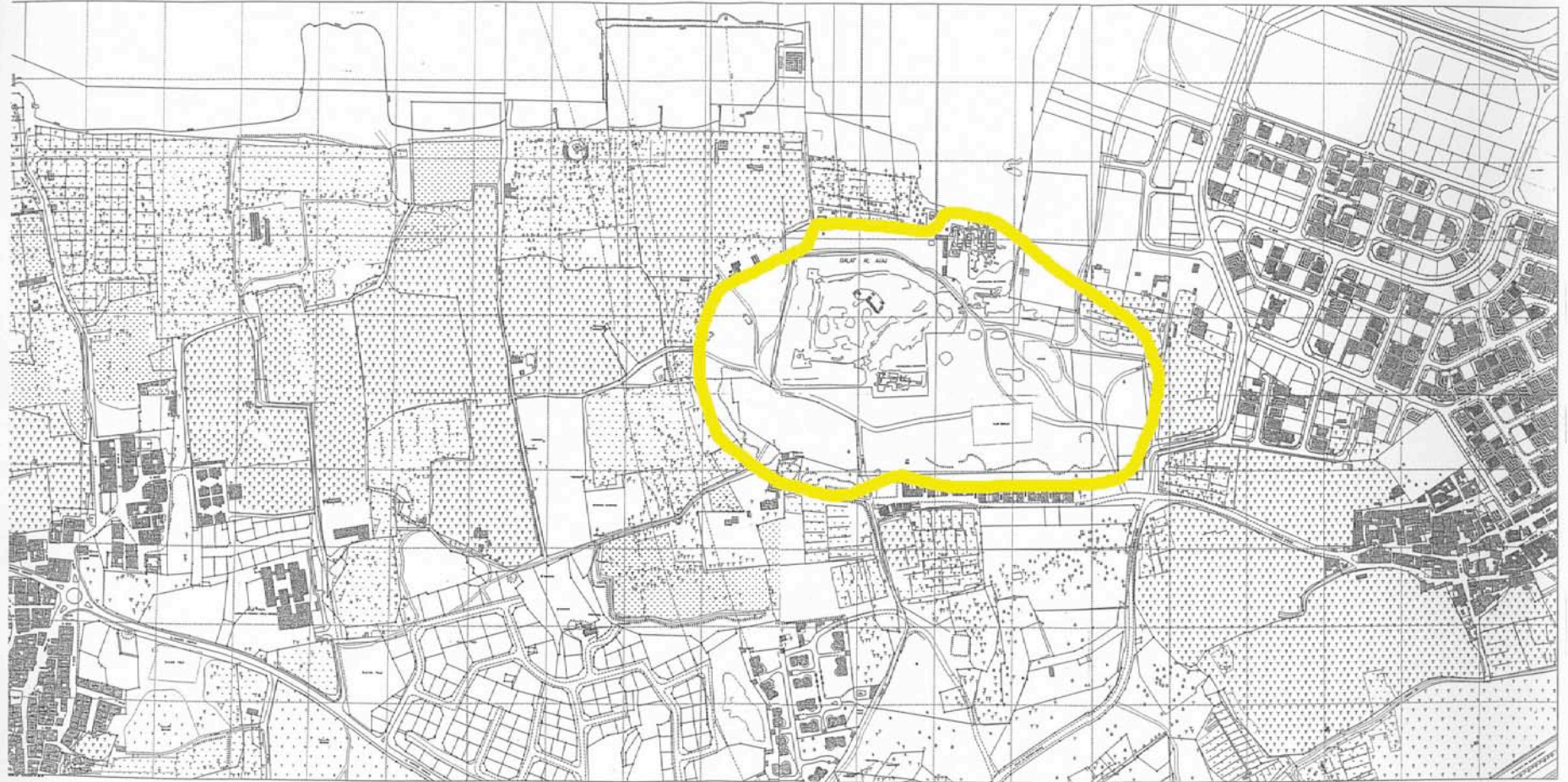
A – Map of the North Area of Bahrain with position of Qal'at al-Bahrain site (edition : 1977)





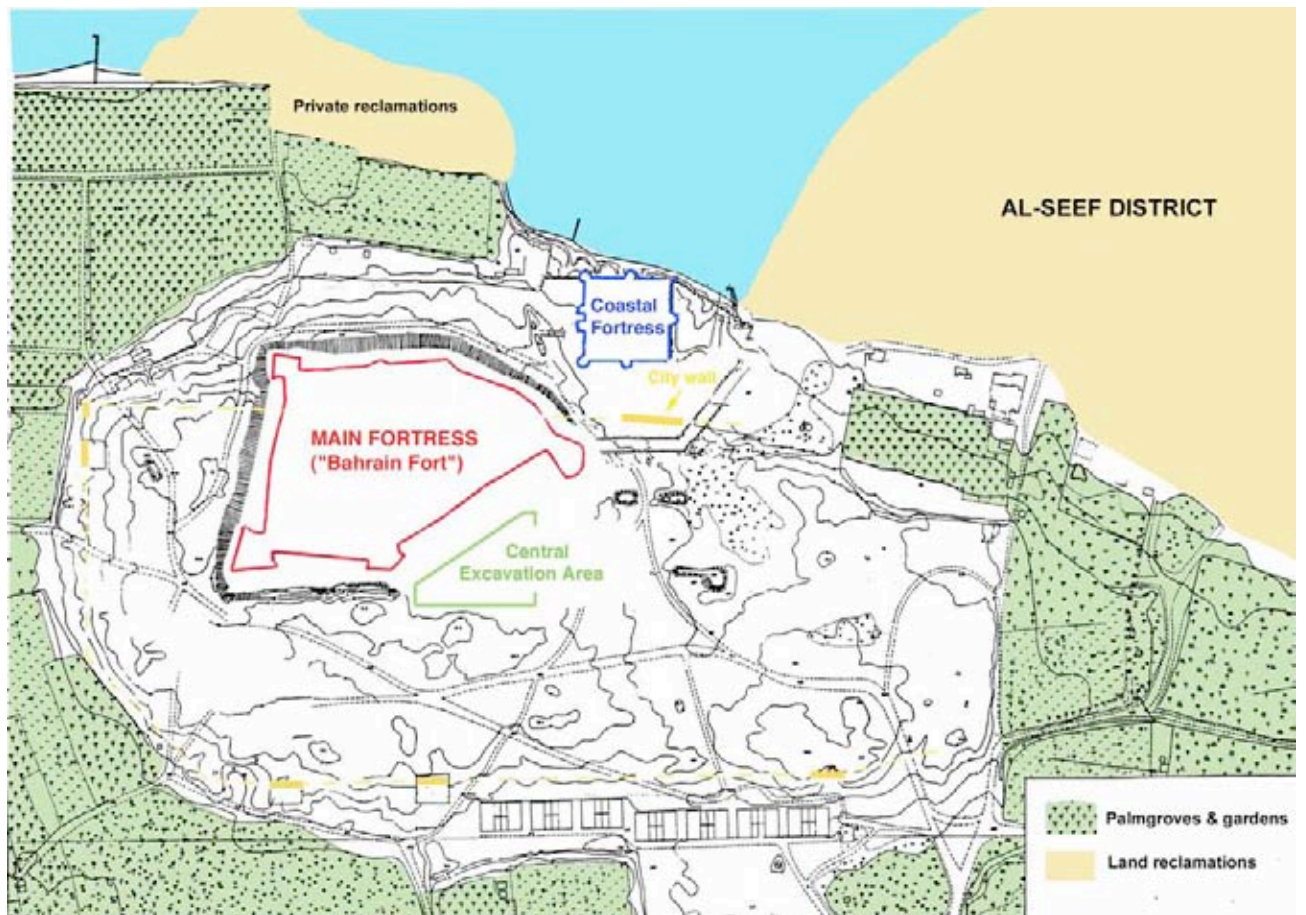
B – Last edition of Survey Directorate map of the northern part of Bahrain (January 2004), with indication of boundaries of nominated site and of surrounding buffer zone.
(the non-reduced, color edition is delivered in annex to the Nomination File, 2 sheets at scale 1 : 10 000)

Scale :  KM



C – Last edition of Survey Directorate map of the area surrounding Qal'at al-Bahrain (January 2004), with indication of boundaries of nominated site (archaeological features on the site are not up-dated). [the non-reduced, color edition is delivered in annex to the Nomination File, 4 sheets at scale 1 : 1000]

Scale : 0 100 200 300 M



D – Sketch-map of architectural / archaeological features exposed at Qal'at al-Bahrain site