



Staatskanzlei und Ministerium für Kultur des Landes Sachsen-Anhalt  
Postfach 4165 • 39016 Magdeburg

ICOMOS Evaluation Unit  
Ms. Gwenaëlle Bourdin  
F - Charenton-le-Pont  
*via Email*

**Nomination to the World Heritage List 2017**  
**“Naumburg Cathedral and the High Medieval Cultural Landscape of the Rivers Saale and Unstrut”**

Magdeburg, 28 October 2016

Dear Vice-Presidents Conti and Kono,  
dear Ms. Bourdin and dear Ms. Buckley,

Felix Meister  
Tel: +49 391 567-7728  
Felix.Meister@mk.sachsen-  
anhalt.de

We are very grateful to have been given the opportunity to discuss the German nominations to the World Heritage List with you and your esteemed colleagues of the ICOMOS World Heritage Panel at such an early stage in your deliberations.

Regarding the nomination of the “Naumburg Cathedral and the High Medieval Cultural Landscape of the Rivers Saale and Unstrut” we have particularly appreciated ICOMOS’ guidance provided over the past months following Decision 39 COM 8B.26. Based on your advice, we have undertaken a substantial revision of this nomination, which - we believe – has resulted in a significantly improved nomination dossier, with a clearer thematic focus, an enhanced comparative analysis as well as the concentration on the most prominent individual sites and monuments as reflected in the mapping of the site. The nominated area has been reduced by more than 80% compared to the first dossier of 2014, while a large buffer zone has been designated so as to ensure comprehensive protection of all component parts.

Undoubtedly, these modifications based on ICOMOS’ suggestions have helped to strengthen the nomination, both in terms of its perception by the local population and the requirements of the UNESCO Operational Guidelines. We were therefore glad to hear that the ICOMOS World Heritage Panel shares our conviction that the substantial work on the nomination dossier has led to a significant improvement and the result is in keeping with the ICOMOS suggestions of October 2015. We particularly appreciated Ms. Buckley’s comment about the revised dossier being both coherent and beautifully presented.

Hegelstraße 42  
D - 39104 Magdeburg

Telefon (0391) 567-01  
Telefax (0391) 567-6565  
www.sachsen-anhalt.de

Landeshauptkasse Sachsen-Anhalt  
Deutsche Bundesbank  
BIC MARKDEF1810  
IBAN DE21 8100 0000 0081 0015 00

Please allow us to use this opportunity to summarize our understanding of the remaining concerns and propositions you offered during our recent consultation:

You pointed out that the proposed criteria for inscription may not be demonstrated by all of the 11 component parts of this cultural landscape. While criterion (ii) may be found in their entirety regarding the sites of cultural interchange in the High Middle Ages as described in the proposed statement of OUV, you asked for further clarification on criterion (iv) and expressed strong reservations about criterion (i) to be identifiable in all 11 component parts. You explained that the assessment of this very complex nomination poses significant difficulty in regard to the stipulations of the Operational Guidelines. While the dossier aims to demonstrate the wholeness of the proposed OUV by choosing a broad approach including many different aspects and remarkably linked medieval sites of this cultural landscape, you pointed out that serial nominations, such as this one, require the difficult process of demonstrating that each component part individually contributes to the OUV and shares all aspects of the proposed criteria at the same time. Hence, you asked us to further enhance the Comparative Analysis by comparing each component part separately to other sites alike.

Following our consultation, we thoroughly considered your concerns and the work still to be done. As a result, we would like to submit the following proposal to you – a proposal we feel has the capacity to close the gap between a sound look at the entirety of the cultural landscape and the existing regulatory framework. In accordance with the findings of the World Heritage Panel, *we propose to reduce the eleven nominated component parts to merely three, namely component parts 1 (Naumburg Cathedral within the old town), 4 (Neuenburg Castle atop Freyburg), and 9 (Schulpforte monastery).*

These three components and their main monuments named above count among the most sophisticated works of art created during the European High Middle Ages. As they are the product and nucleus of the settlement and colonization process that is the nomination's core, we are confident that these three component parts are by themselves sufficient to adequately explain the paramount importance of the landscape as a whole. Without a doubt these exemplary monuments are unique masterpieces of human creative genius and offer insight into the arts, architecture, and technology of their specific era.

We do feel the need to emphasize the artistic quality of the Naumburg Cathedral within this cultural landscape, and to keep proposing that the nominated property be inscribed under criterion (i). It is a notion that was also shared by the honourable delegates of the Committee in 2015. Their unilateral vote prompted us to look further at the cathedral's significance as the core of this landscape.

Consequent to the above, we suggest that the following changes be made to the nomination:

- The title of the nomination could be changed to “Naumburg Cathedral and related sites in the Cultural Landscape of the Rivers Saale und Unstrut”;
- This serial property will remain nominated under criteria (i), (ii), and (iv). However, based on your valuable advice, we shall clarify the draft statement of OUV, especially regarding criterion (iv), and resubmit an enhanced statement to you shortly. Also, we will send you a matrix substantiating the criteria as well as the values and attributes of each of the three component parts, and their respective contribution to the OUV;
- The buffer zone will remain unchanged in order to ensure a maximum of protection for the entire river valley and the important views connecting the component parts;
- You will find a schematic and a topographic map of the nominated area according to this proposal attached to this letter.

Refocusing the nomination on the main monumental ensembles, which give ample testimony of the cultural landscape as a whole, shall serve to make it less complex and more palpable. Even if this proposal does not come easy to us, we do see the benefit.

The proposed changes are a first response to the questions you raised during our recent consultation; a reaction we believe will clarify the issues we discussed. We very much hope that you share our impression that the changes laid out above may be a step forward regarding the current evaluation process. In light of the Committee’s decision of July 2015, we like to ask for your continued advice and guidance, and would be most grateful for a notion whether these proposed changes are in keeping with the findings of the ICOMOS World Heritage Panel, which you were so kind to share with us.

We would appreciate if you accept to share the contents of this letter with your esteemed colleagues in the World Heritage Panel.

Also, should you find the time to do so, please have a look at the new English website presenting the Naumburg nomination at [www.naumburgcathedral.de](http://www.naumburgcathedral.de). It features a niftily animated short film explaining the theme of the revised nomination, also available at <https://youtu.be/VxQzuyrpOic>.

With sincere thanks for your kind efforts and guidance, we remain yours sincerely,



Dr. Holger Kunde

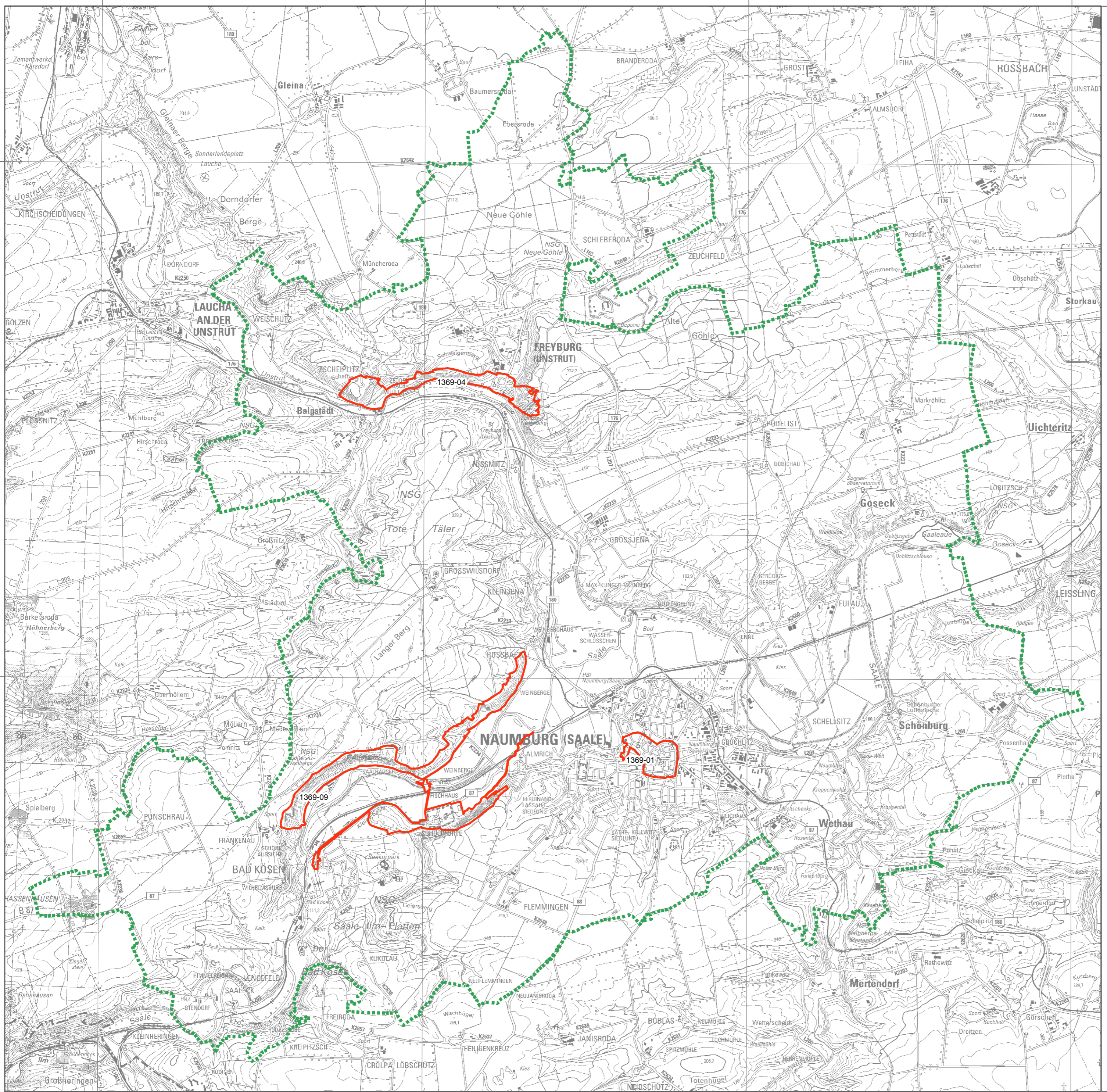


Felix Meister



# Map of the World Heritage Property and its Buffer Zone

- World Heritage Property (component part)
  - - - - - Buffer Zone of the World Heritage Property
- 01 Naumburg  
04 Freyburg  
09 Pforta



Base map: Topographic map 1:50.000 (© LVermGeo LSA 2013, 010213)  
 Scale: 1:50.000  
 Spatial reference: DHDN / Gauss-Krüger Zone 4 (EPSG 31468)  
 Geographical grid coordinates in WGS 1984 (EPSG 4326)  
 Date: 2 December 2015



11°40'0"E      11°45'0"E      11°50'0"E      11°55'0"E

51°15'0"N

51°10'0"N