



# United States Department of the Interior

## NATIONAL PARK SERVICE

1849 C Street, N.W.  
Washington, DC 20240

**FEB - 9 2015**

Kishore Rao  
Director  
World Heritage Centre  
UNESCO  
7, Place de Fontenoy  
75352 Paris 07 SP, France

Dear Mr. Rao: *Kishore*

This is a clarification of the boundary of the World Heritage property "**Monticello and the University of Virginia in Charlottesville**" in response to the Retrospective Inventory, as well as a request for a minor boundary modification to formalize this clarification.

In compliance with the requirements of the *Operational Guidelines, namely paragraph 164 and Annex 11*, we are providing the following information to propose the minor boundary modification:

### 1) Area of the property (in hectares):

- a) The original nomination (in 1986) did not clearly identify the area in hectares for the two components of the serial property.
- b) The corrected number of hectares for the property is:

Monticello	784.63 ha
University of Virginia	<u>11.33 ha</u>
TOTAL	795.96 ha

### 2) Description of the modification:

The modification requested is in the nature of a correction, rather than a substantive change. It affects only the Monticello component of the serial property.

The map of the Monticello boundary submitted with the nomination in 1986:

- Included a parcel that the Thomas Jefferson Foundation (the entity that owns and manages Monticello) has never owned (#1 on the accompanying overlay map);
- did not include another parcel that the Thomas Jefferson Foundation did own (#2 on the overlay map);



- inaccurately drew the boundary in the southeastern corner (#3 on the overlay map);
- and included one parcel that the Foundation did not own.

These errors have been rectified in the requested modification.

### **3) Justification for the modification:**

The initial boundary map submitted with the World Heritage nomination in 1986 inaccurately delimited the boundaries for the Monticello portion of the property. Because the original boundary map was prepared using a paper map overlaid, by hand, with inaccurate tax map data [parcel boundaries] supplied by the Albemarle County planning department, the boundary for the Monticello portion of the property heritage site did not accurately show the land owned by the Thomas Jefferson Foundation, which was the basis for the Monticello portion of the nominated property.

The revised map submitted with the Retrospective Inventory in 2013 was created digitally using updated digitized tax maps. Consequently, it accurately reflects the land that was owned by the Thomas Jefferson Foundation when the site was inscribed on the World Heritage List in 1987. All of the land demarcated on the corrected maps was once owned by Thomas Jefferson and is currently owned by the Thomas Jefferson Foundation.

Therefore, the revised boundaries have the most direct and relevant association possible with the original Monticello estate and are more authentic. The changes to the boundary will have no effect on the continuing conservation or protection of the property

### **4) Contribution to the maintenance of the Outstanding Universal Value:**

The modifications requested to the map are at the periphery of the boundary that is most distant from the Monticello mansion, and do not affect views or other features that contribute to the property's Outstanding Universal Value.

### **5) Implications for legal protection:**

The correction to the boundary will make no change to the legal protection of the property.

### **6) Implications for management arrangements:**

The correction to the boundary will make no change to the management of the property.

**7) Maps:**

Three maps are attached:

- A map of the boundary proposed with the 1986 nomination (in response to the Retrospective Inventory);
- A map containing a the proposed minor boundary modification for Monticello;
- A map with an overlay of the two boundaries.

Sincerely,

A handwritten signature in blue ink, appearing to read "Steve", is positioned above the typed name.

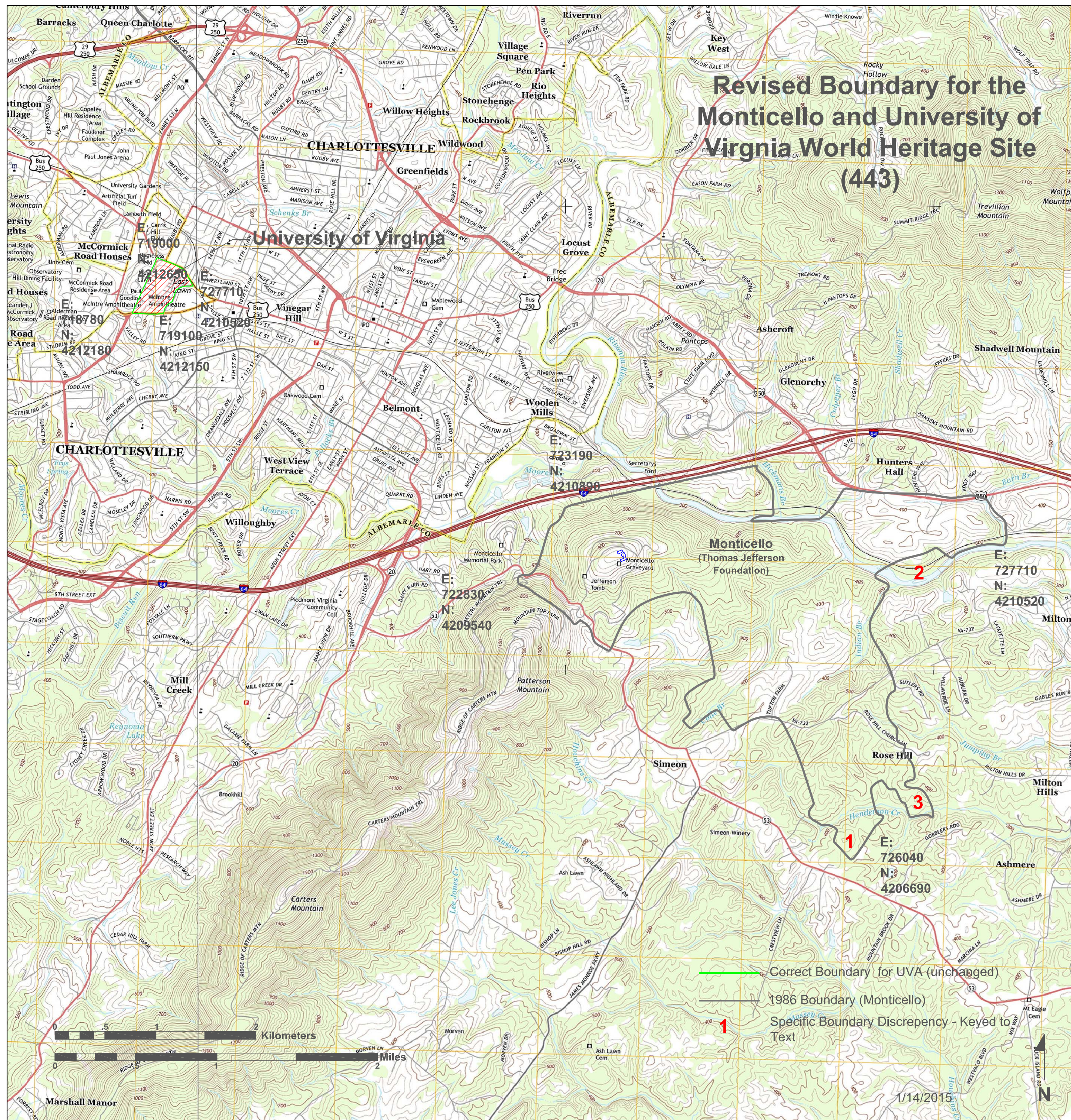
Stephen A. Morris  
Chief, Office of International Affairs

**Attachments:**

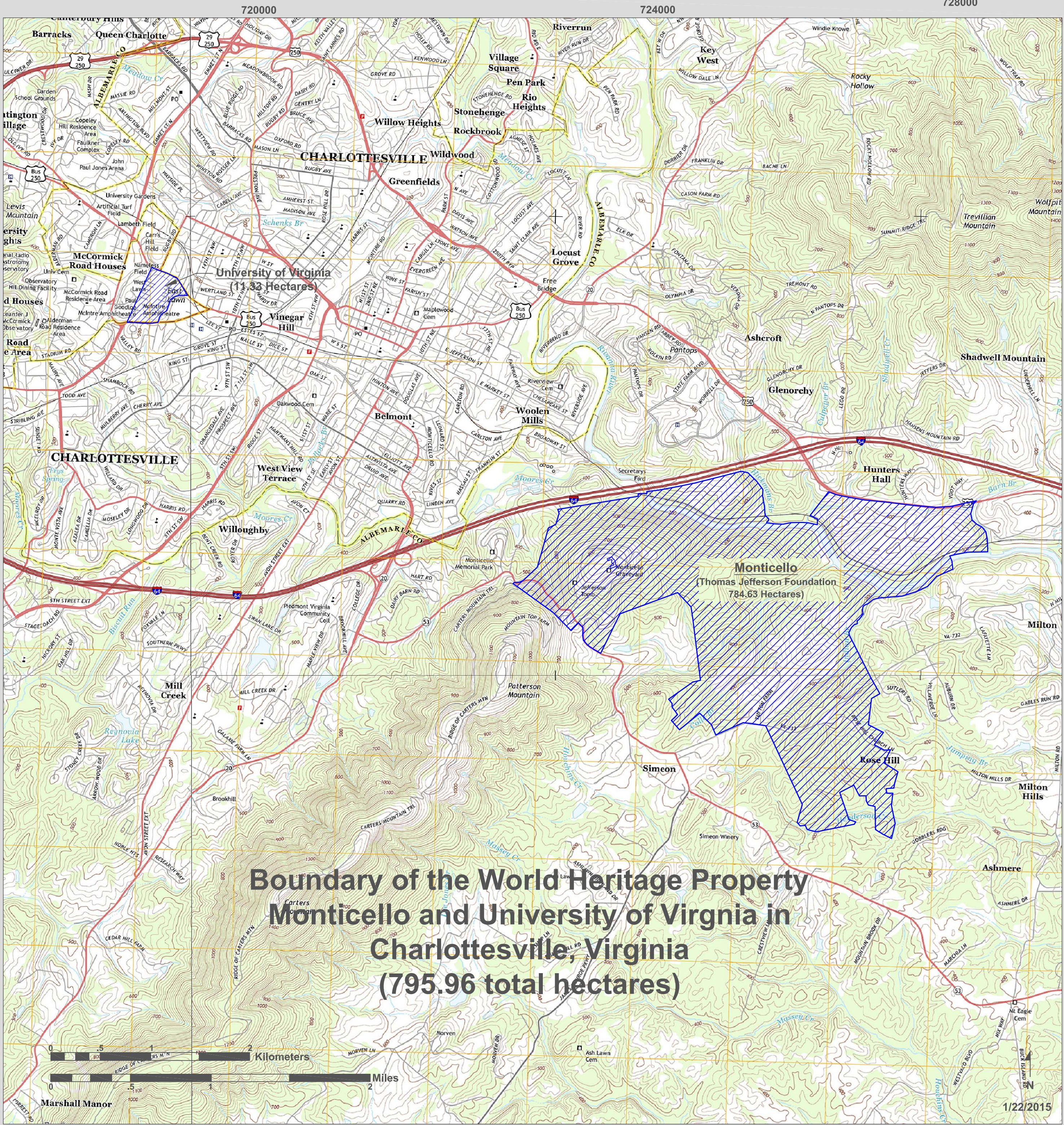
Monticello and UVA overlay map  
Revised Monticello and UVA boundary map



# Revised Boundary for the Monticello and University of Virginia World Heritage Site (443)







**Boundary of the World Heritage Property  
Monticello and University of Virginia in  
Charlottesville, Virginia  
(795.96 total hectares)**

Map Information  
Source Scale: 1:24000  
Projected UTM Zone 17  
North American Datum 1927

1/22/2015



# Revised Boundary for the Monticello and University of Virginia World Heritage Site (443)

