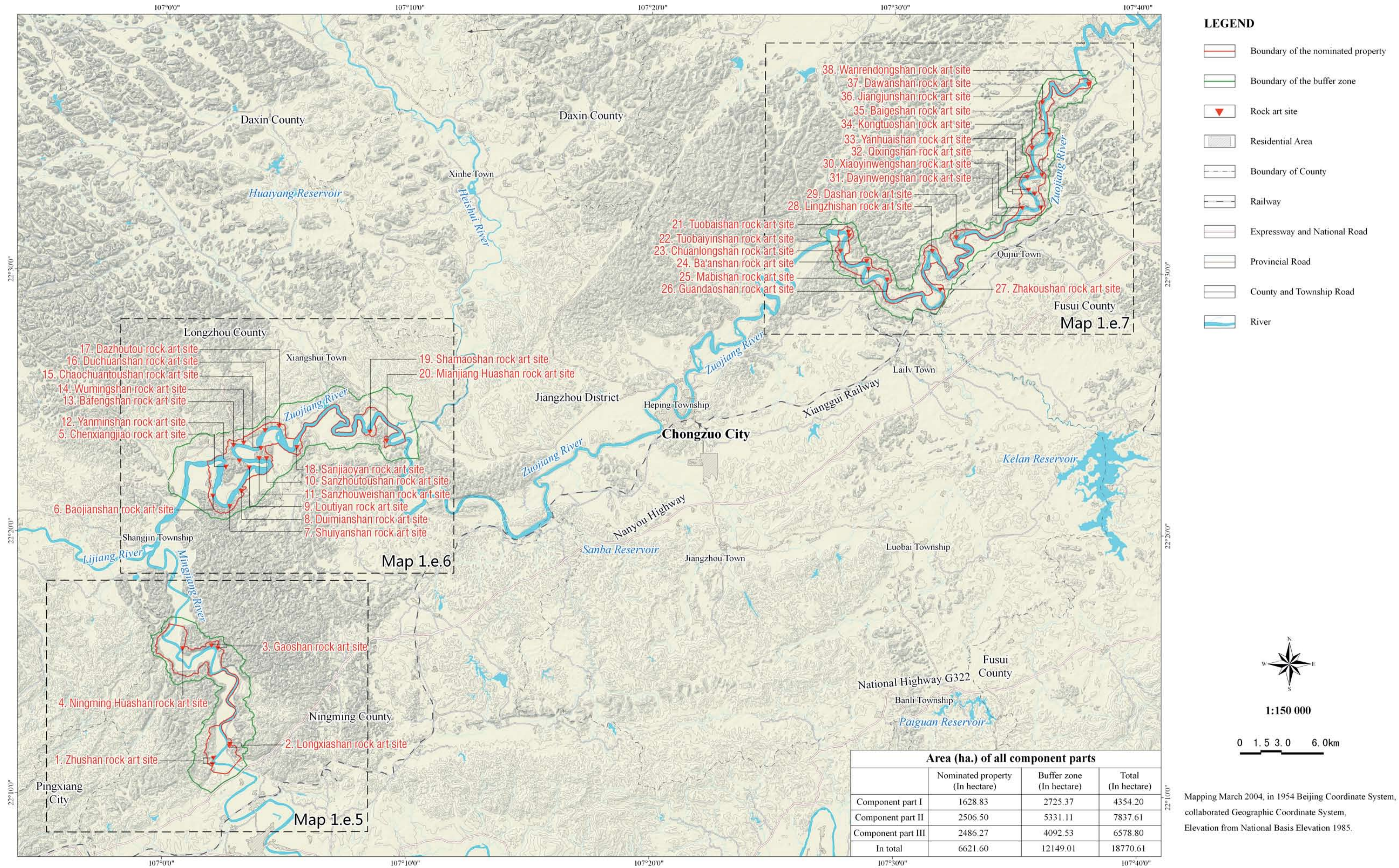


# Zuojiang Huashan Rock Art Cultural Landscape

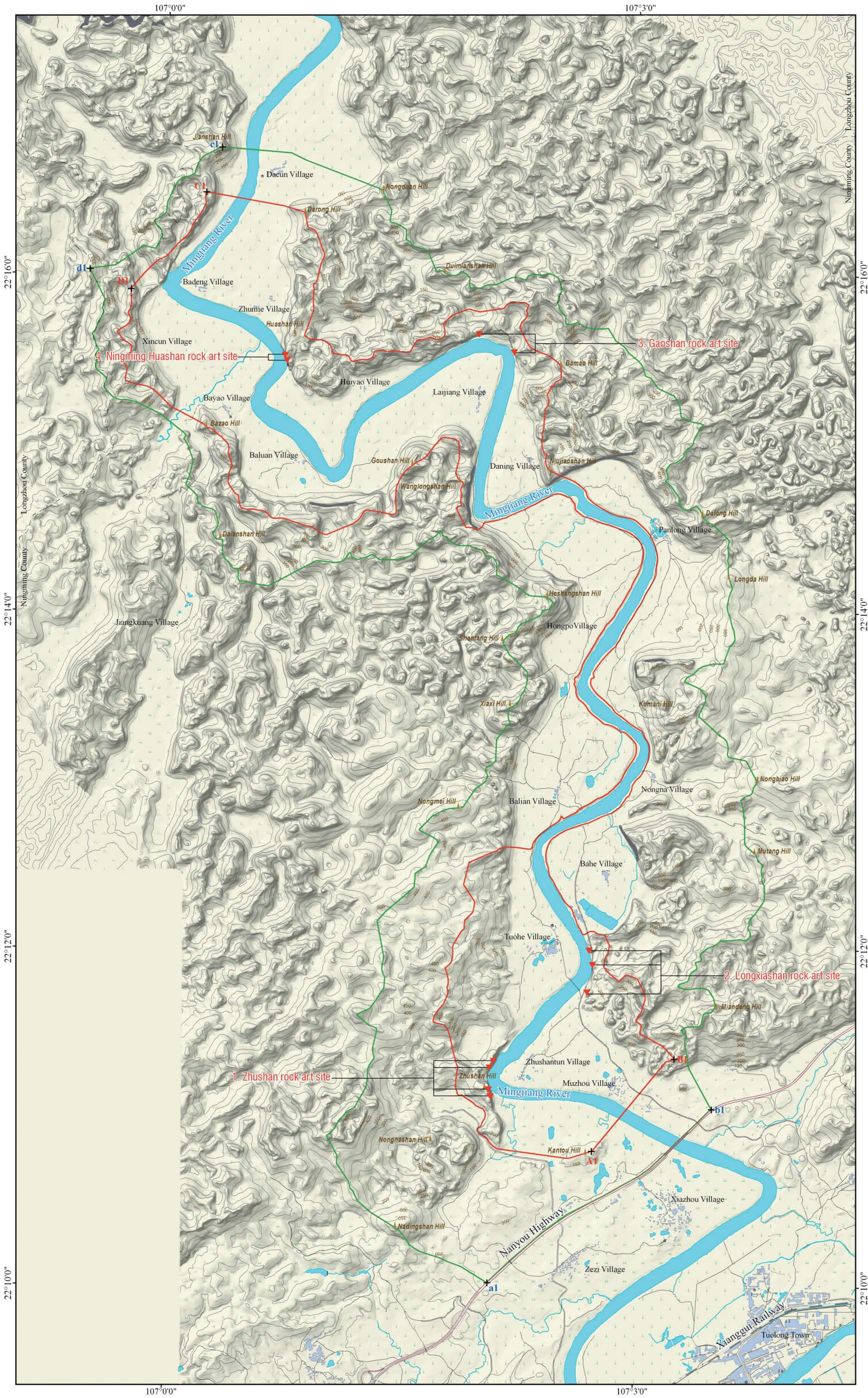
## 1.e.4 A topographic map showing the boundaries of nominated property and buffer zone - General Map





# Zuojiang Huashan Rock Art Cultural Landscape

## 1.e.5 A topographic map showing the boundaries of nominated property and buffer zone - Component part I



### LEGEND

- Boundary of the nominated property
- Boundary of the buffer zone
- Rock art site
- Residential Area
- Boundary of County
- Main Roads
- Other Roads
- Contour
- Scarp
- River
- Dry land
- Paddy Field
- Non-timber forest
- Woodland
- Shrub
- Bamboo Forest
- Sparse Forest
- Grassland

### Area (ha.) of component part I

Nominated Property	1628.83
Buffer Zone	2725.37
Total	4354.20

### Control points of boundary of nominated property of component part I

Component part	Control point	Longitude (East)	Latitude (North)
Component part I	A1	107°02'44"	22°10'48"
	B1	107°03'15"	22°11'21"
	C1	107°00'15"	22°16'29"
	D1	106°59'46"	22°15'55"

### Control points of boundary of buffer zone of component part I

Component part	Control point	Longitude (East)	Latitude (North)
Component part I	a1	107°02'04"	22°10'01"
	b1	107°03'30"	22°11'03"
	c1	107°00'20"	22°16'46"
	d1	106°59'30"	22°16'01"



1:20 000

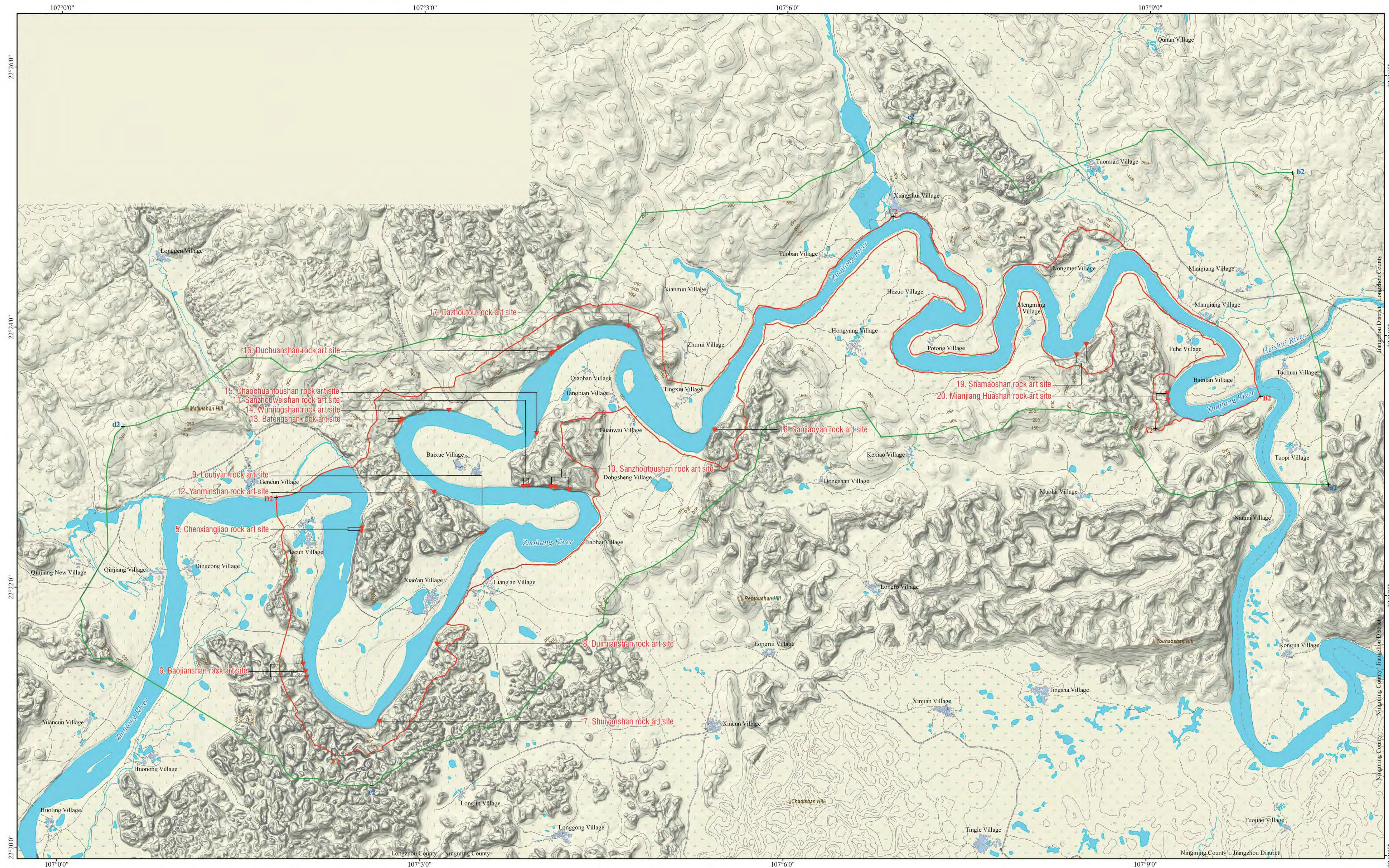


Mapping March 2004, in 1954 Beijing Coordinate System, collaborated Geographic Coordinate System, Elevation from National Basis Elevation 1985.



# Zuojiang Huashan Rock Art Cultural Landscape

## 1.e.6 A topographic map showing the boundaries of nominated property and buffer zone - Component part II



### LEGEND

- Boundary of the nominated property
- Boundary of the buffer zone
- ▼ Rock art site
- Residential Area
- Boundary of County
- Main Roads
- Other Roads
- Contour
- Scarp
- River
- Dry land
- Paddy Field
- Non-timber forest
- Woodland
- Shrub
- Bamboo Forest
- Sparse Forest
- Grassland

### Area (ha.) of component part II

Nominated Property	2506.50
Buffer Zone	5331.11
<b>Total</b>	<b>7837.61</b>

### Control points of boundary of nominated property of component part II

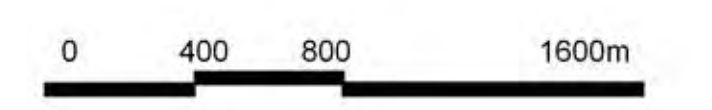
Component part	Control point	Longitude (East)	Latitude (North)
Component part II	A2	107°09'03"	22°23'17"
	B2	107°09'56"	22°23'31"
	C2	107°06'53"	22°24'54"
	D2	107°01'48"	22°22'42"
	E2	107°02'17"	22°20'44"

### Control points of boundary of buffer zone of component part II

Component part	Control point	Longitude (East)	Latitude (North)
Component part II	a2	107°10'30"	22°22'51"
	b2	107°10'11"	22°24'15"
	c2	107°07'01"	22°25'57"
	d2	107°00'31"	22°23'14"
	e2	107°02'36"	22°20'29"



1:20 000

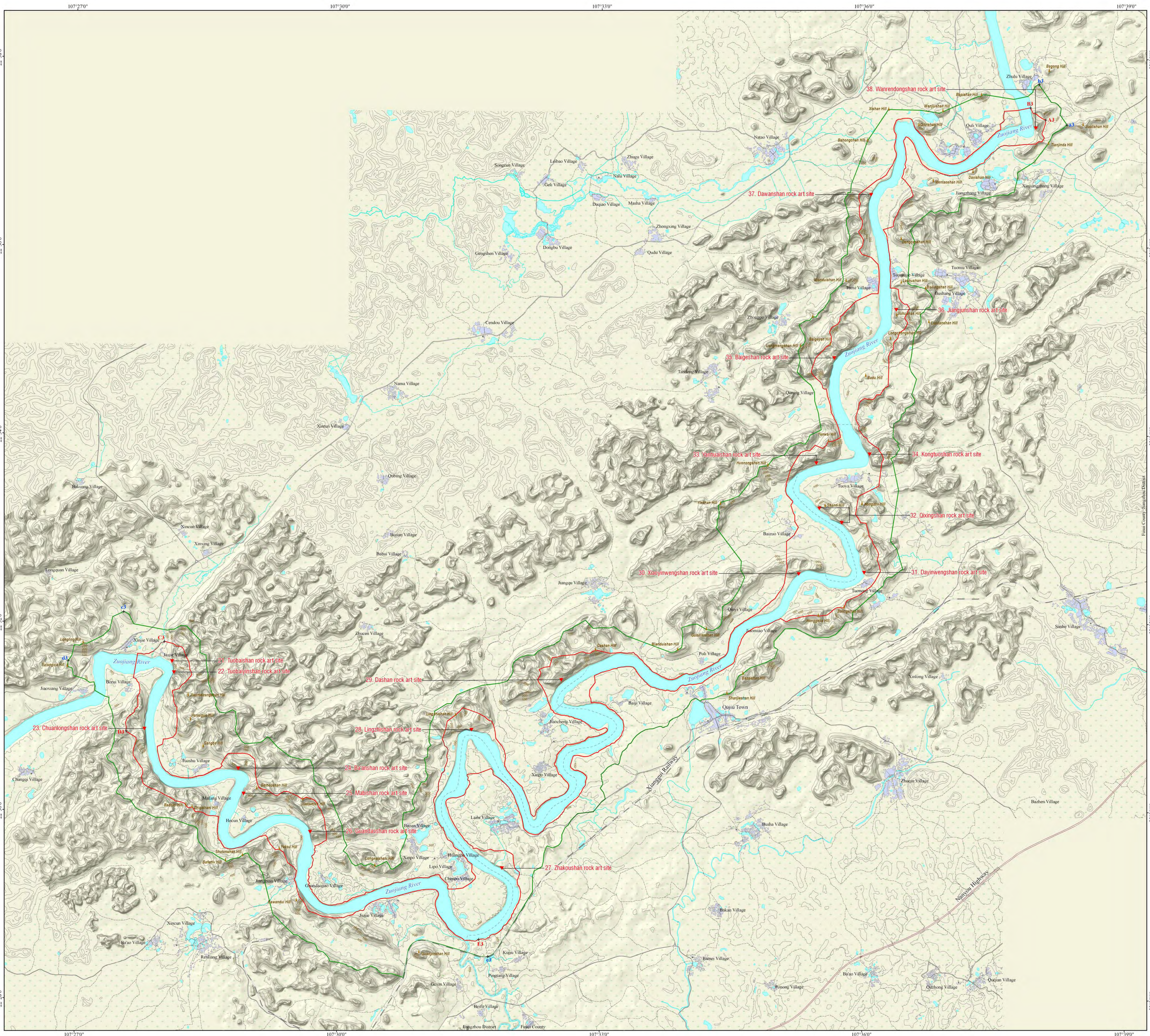


Mapping March 2004, in 1954 Beijing Coordinate System, collaborated Geographic Coordinate System. Elevation from National Basis Elevation 1985.



# Zuojiang Huashan Rock Art Cultural Landscape

## 1.e.7 A topographic map showing the boundaries of nominated property and buffer zone - Component part III



**LEGEND**

- Boundary of the nominated property
- Boundary of the buffer zone
- ▼ Rock art site
- Residential Area
- Boundary of County
- Railway
- Expressway and National Road
- Main Roads
- Other Roads
- Contour
- Scarp
- River
- Dry land
- Paddy Field
- Non-timber forest
- Woodland
- Shrub
- Bamboo Forest
- Sparse Forest
- Grassland

**Area (ha.) of component part III**

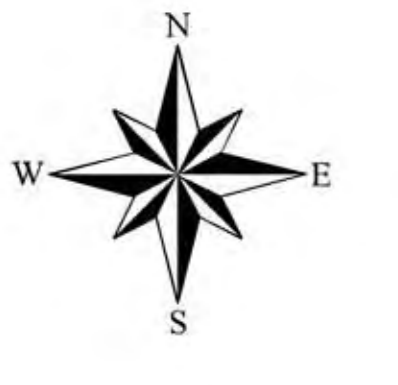
Nominated Property	2486.27
Buffer Zone	4092.53
<b>Total</b>	<b>6578.80</b>

Control points of boundary of nominated property of component part III

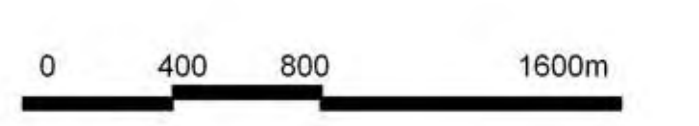
Component part	Control point	Longitude (East)	Latitude (North)
Component part III	A3	107°28'05"	22°27'21"
	B3	107°27'54"	22°27'20"
	C3	107°28'01"	22°27'48"
Component part III	D3	107°27'35"	22°26'50"
	E3	107°21'37"	22°28'38"

Control points of boundary of buffer zone of component part III

Component part	Control point	Longitude (East)	Latitude (North)
Component part III	a3	107°28'19"	22°27'18"
	b3	107°28'00"	22°27'44"
	c3	107°27'37"	22°27'06"
	d3	107°26'55"	22°27'35"
Component part III	e3	107°21'43"	22°28'27"



1:20 000



Mapping March 2004, in 1954 Beijing Coordinate System, collaborated Geographic Coordinate System, Elevation from National Basis Elevation 1985.