

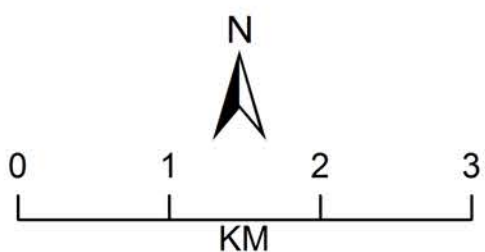
الهيئة العامة للسياحة والآثار  
Saudi Commission for Tourism & Antiquities  
تنمية مسؤولة

## Jubbah (Umm Sinman)

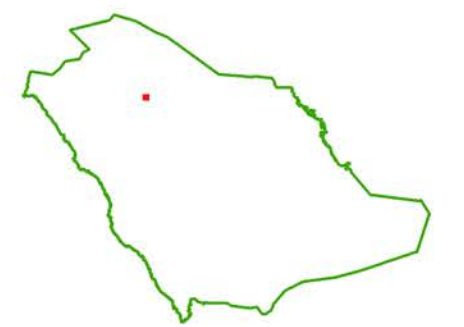
- Rock Art Sites
- Stone Structure
- 🏠 Visitors Center
- Rainwater Barrier
- ××× Fence
- Buffer Zone
- Nominated Property

### Coordinates

40°54'40.23"E  
28°00'46.23"N



1:50,000



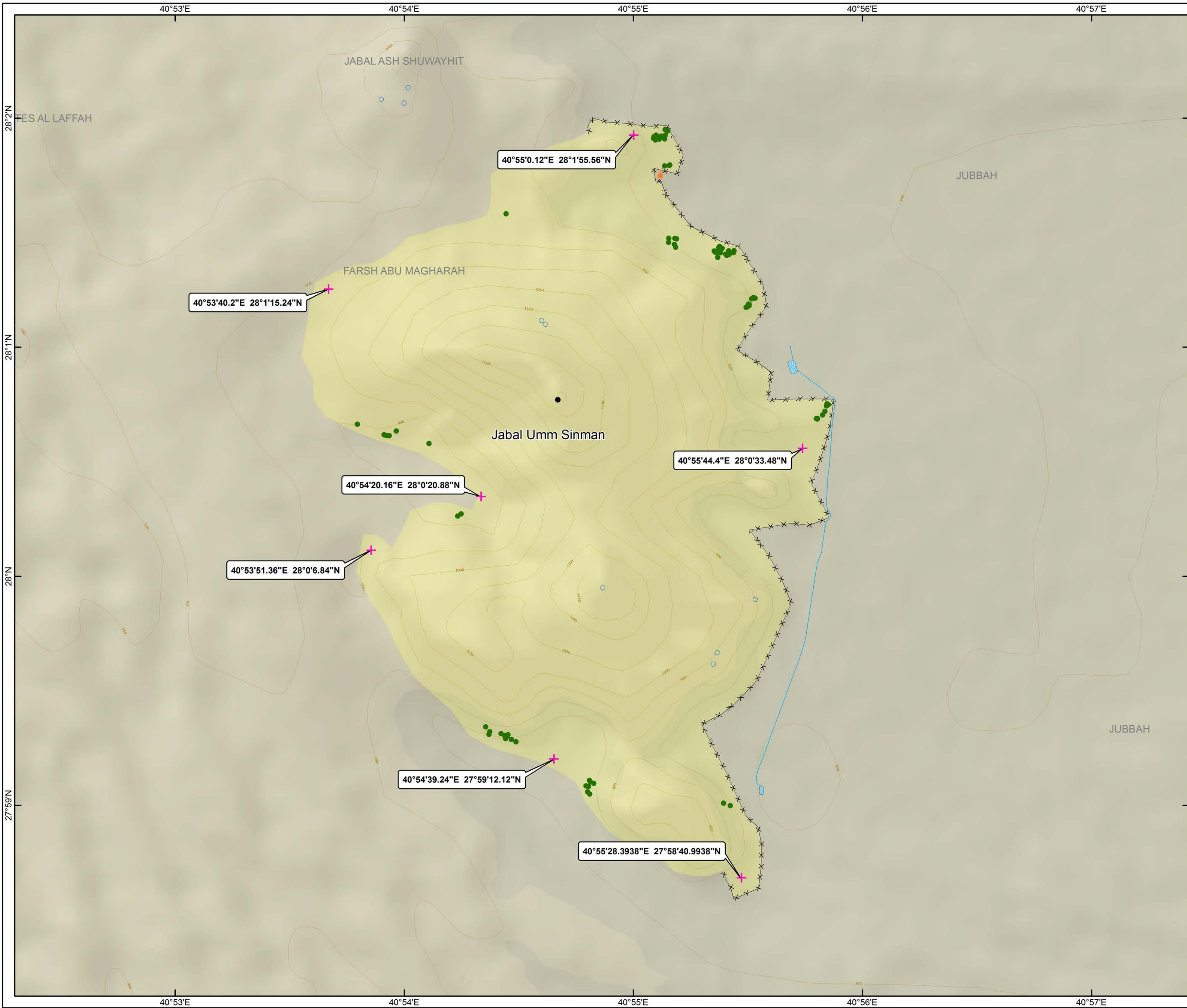
Geographic Coordinate System  
WGS 1984

PREPARED BY : IBRAHIM SULAIMAN ALDAYEL

2014

Source: Esri, DigitalGlobe, GeoEye, i-cubed, USDA, USGS, AEX, Getmapping, Aerognd, IGN, IGP, and the GIS User Community





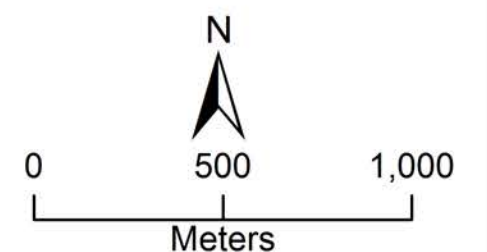
الهيئة العامة للسياحة والآثار  
Saudi Commission for Tourism & Antiquities  
تنمية مسؤولة

## Jubba (Umm Sinman)

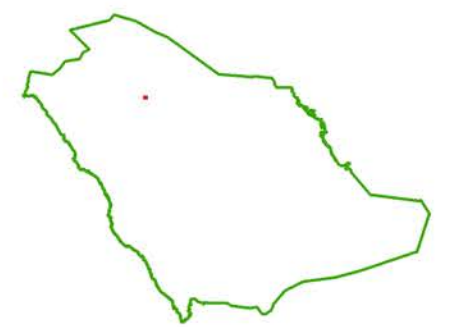
- Rock Art Sites
- + Coordinate
- Stone Structure
- Ⓜ Visitors Center
- Rainwater Barrier
- Contours
- x-x-x Fence
- Road
- Nominated Property

### Coordinates

40°54'40.23"E  
28°00'46.23"N



1:20,000

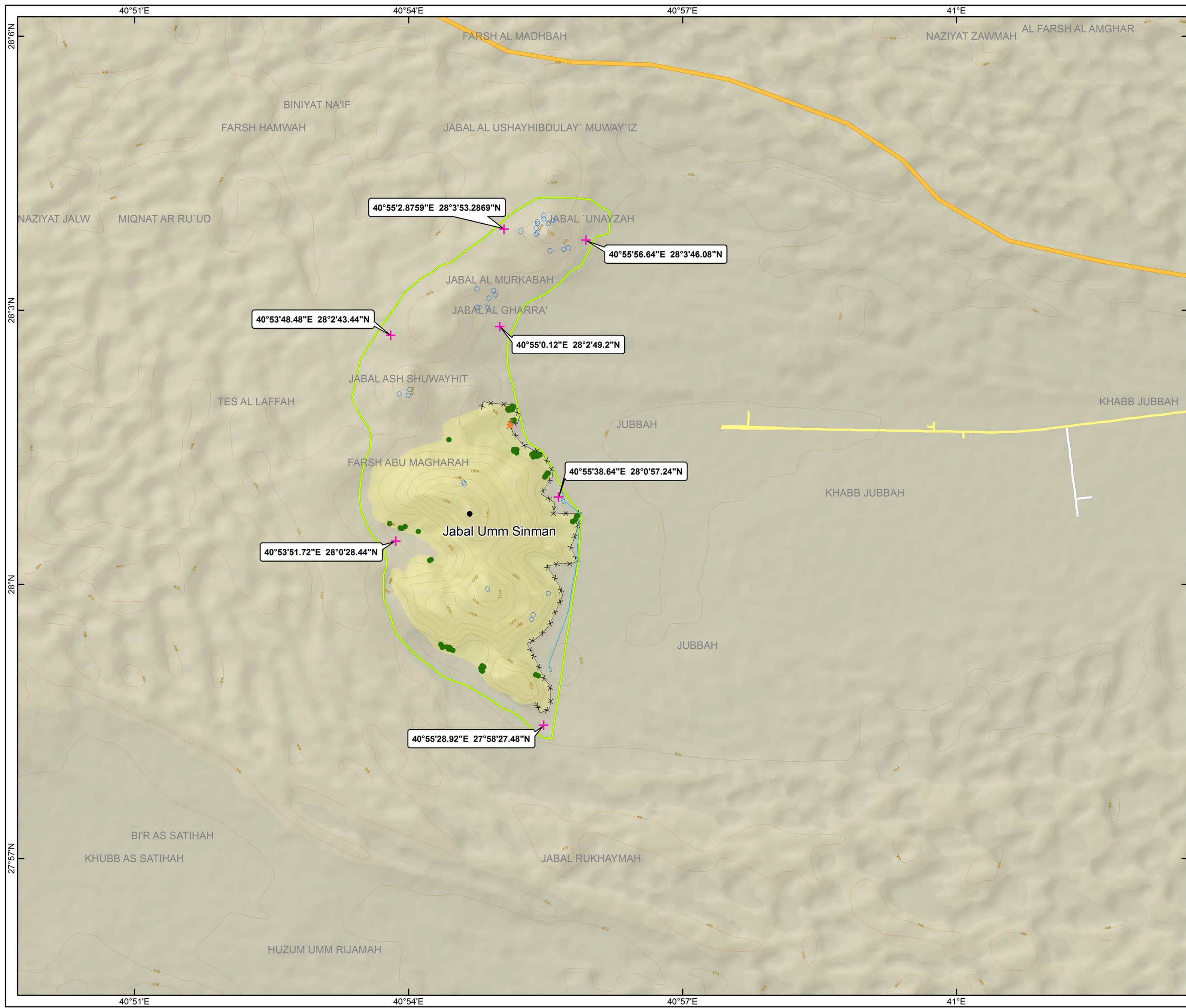


Geographic Coordinate System  
WGS 1984

PREPARED BY : IBRAHIM SULAIMAN ALDAYEL

2014



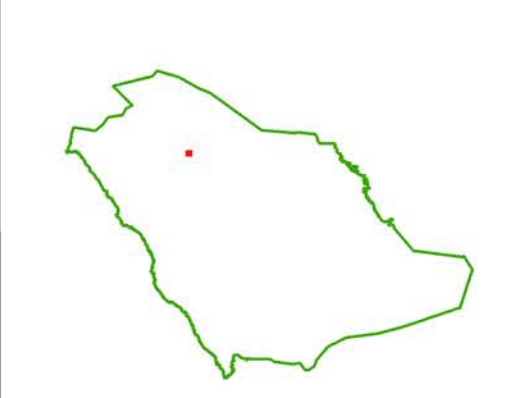


## Jubbah (Umm Sinman)

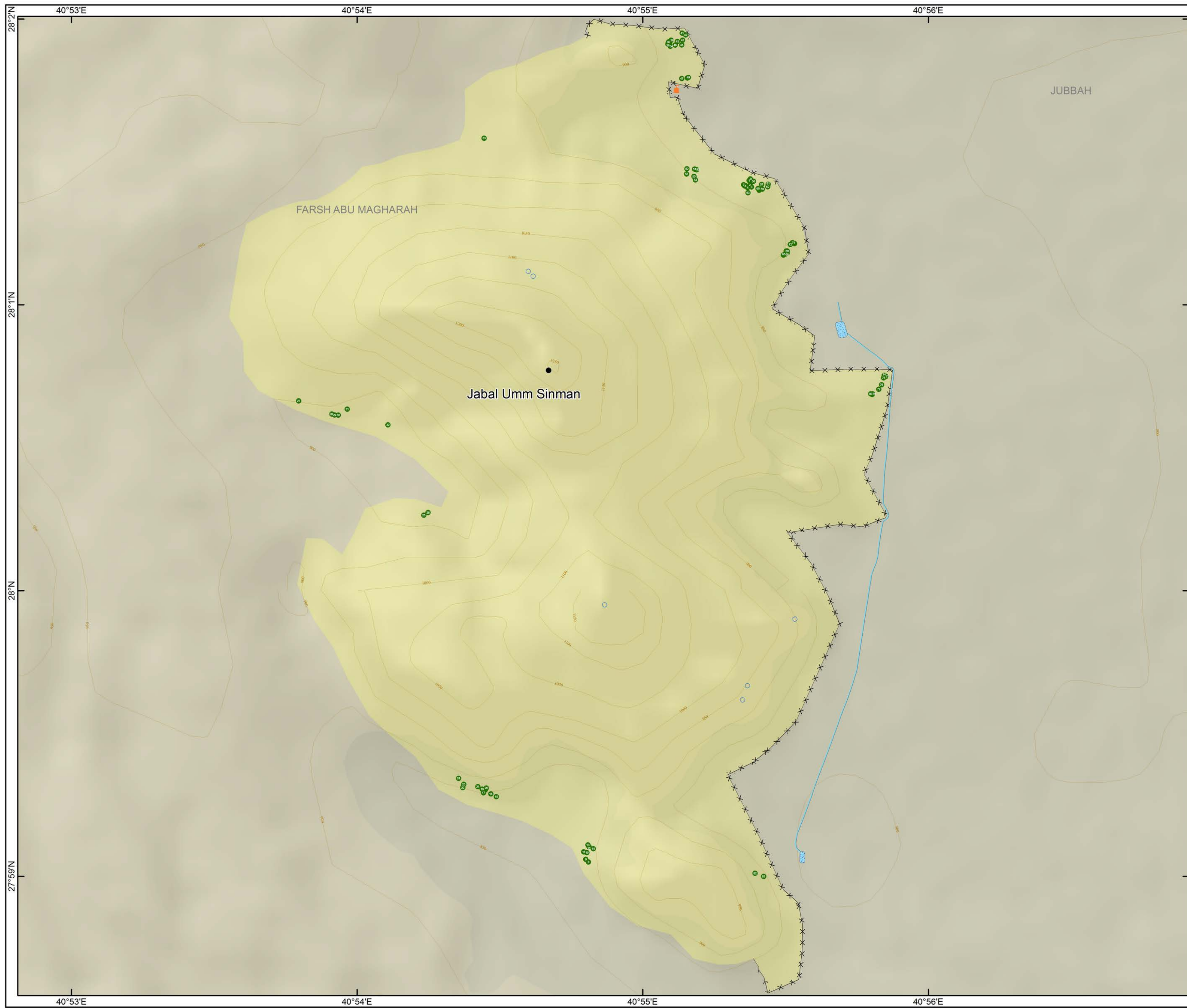
- Rock Art Sites
- + Coordinate
- Stone Structure
- Visitors Center
- Rainwater Barrier
- Contours
- ××× Fence
- Road
- Buffer Zone
- Nominated Property

**Coordinates**  
 ●  
 40°54'40.23"E  
 28°00'46.23"N

KM  
1:50,000







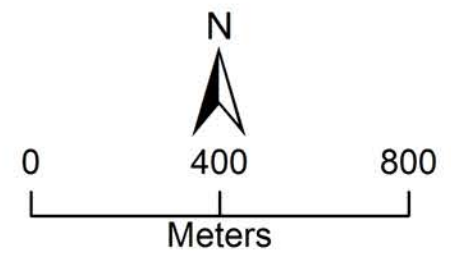
الهيئة العامة للسياحة والآثار  
 Saudi Commission for Tourism & Antiquities  
 تنمية مسؤولة

## Jubba (Umm Sinman)

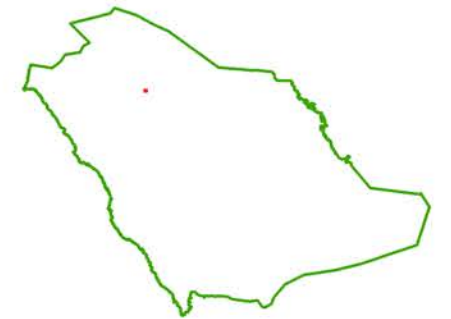
- Rock Art Sites
- Stone Structure
- Visitors Center
- Rainwater Barrier
- Contours
- x x x Fence
- Nominated Property

### Coordinates

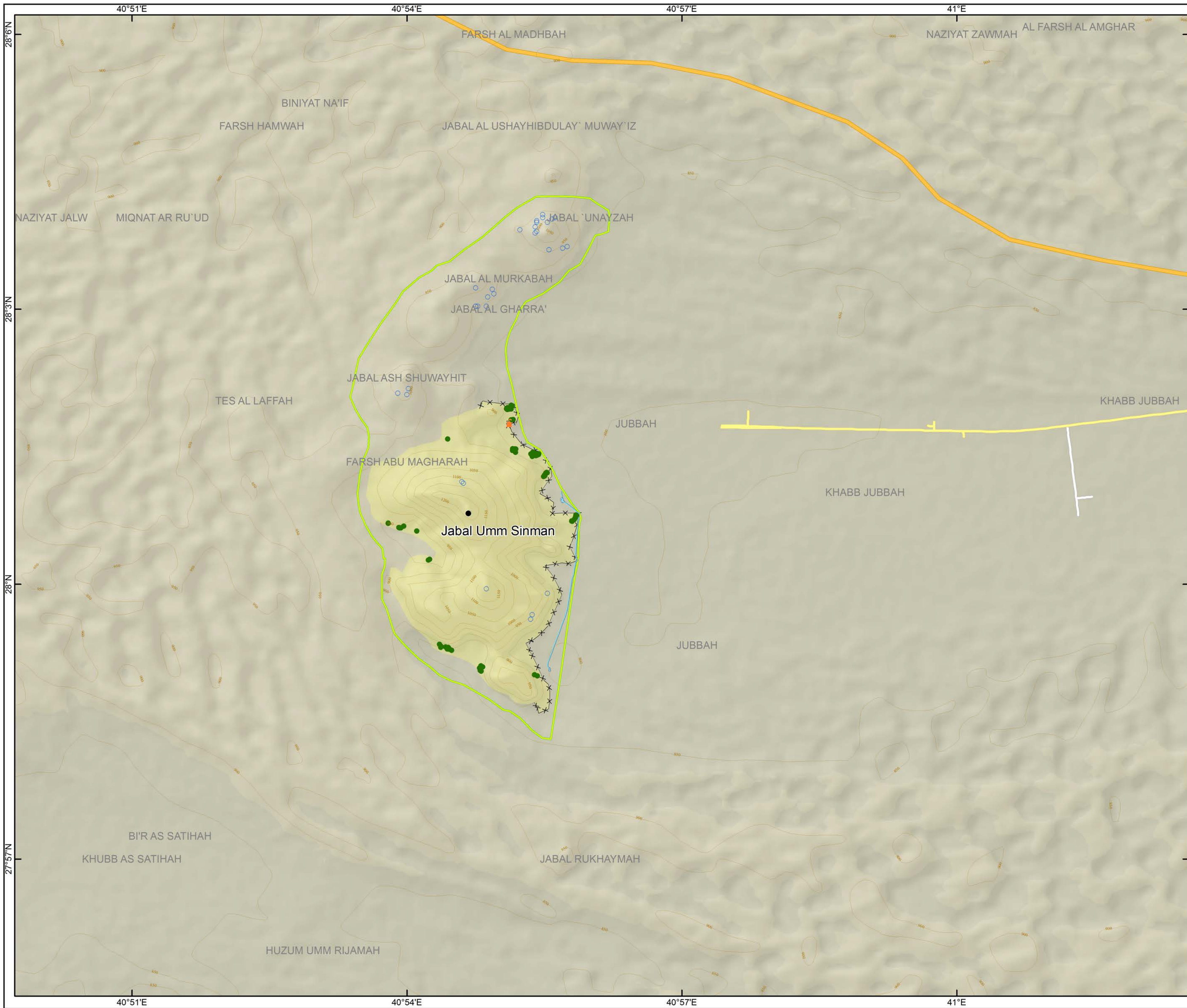
●  
 40°54'40.23" E  
 28°00'46.23" N



1:16,000





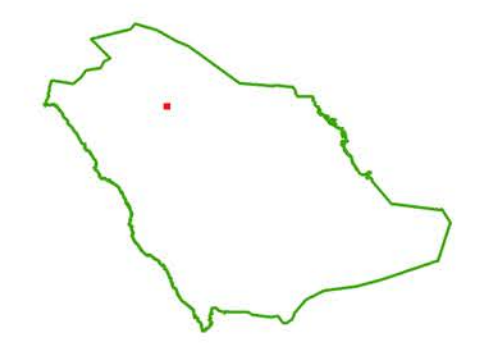
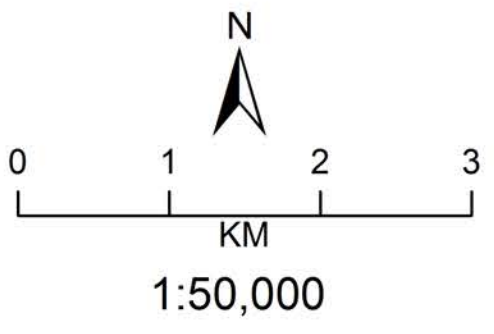


الهيئة العامة للسياحة والآثار  
Saudi Commission for Tourism & Antiquities  
تنمية مسؤولة

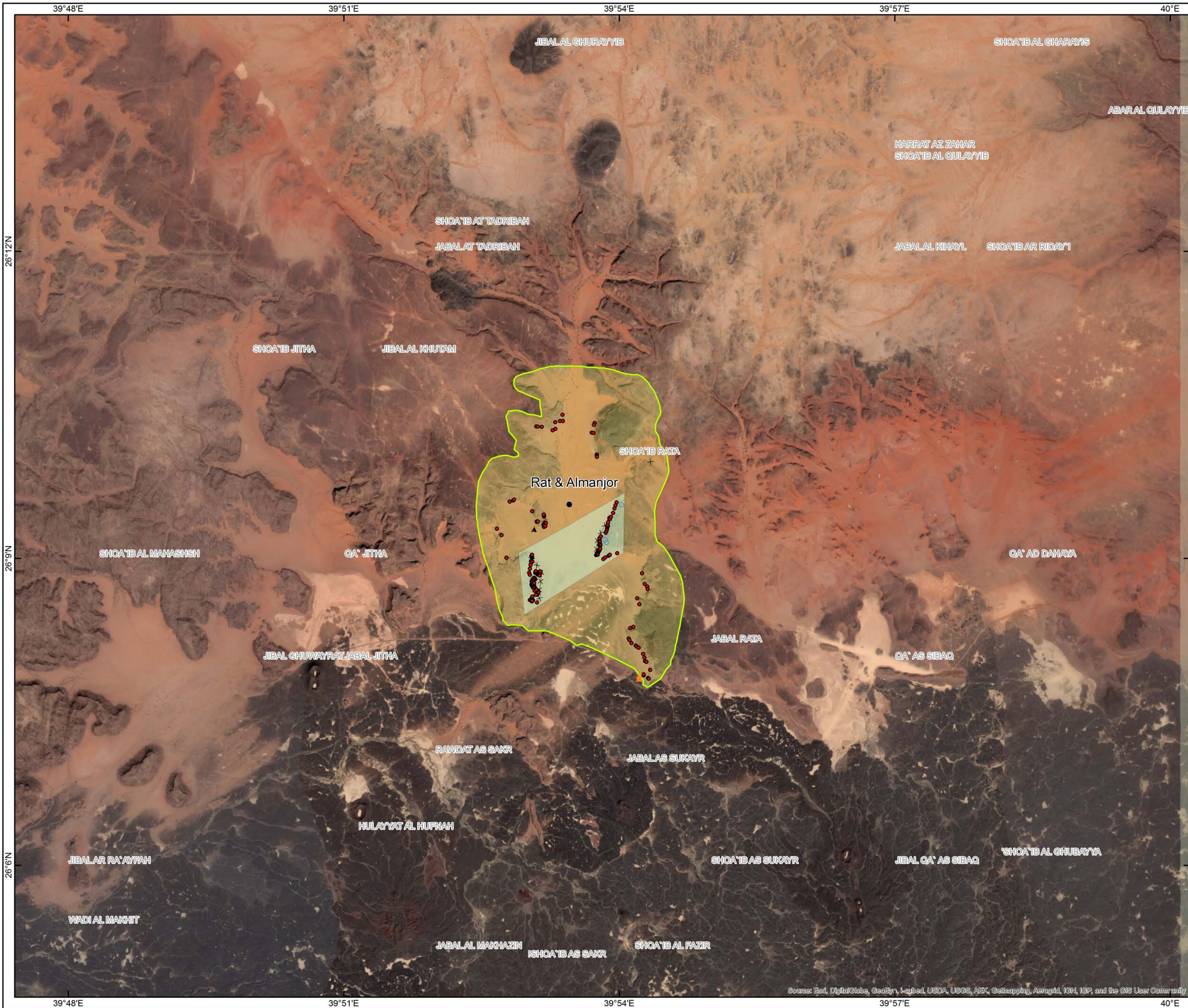
## Jubbah (Umm Sinman)

- Rock Art Sites
- Stone Structure
- 🏠 Visitors Center
- Rainwater Barrier
- Contours
- x x x Fence
- Road
- Buffer Zone
- Nominated Property

**Coordinates**  
●  
 40°54'40.23" E  
 28°00'46.23" N



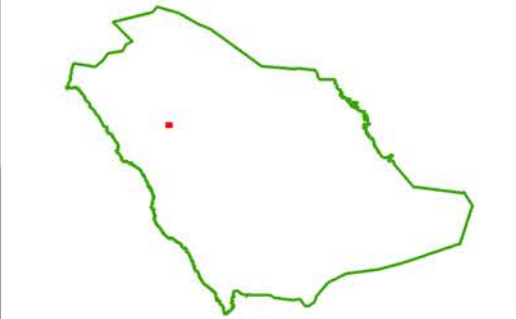
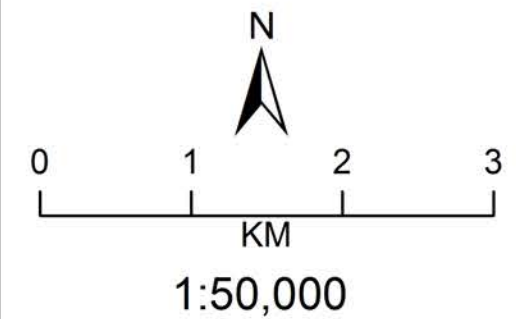




### Ashuwaymis Site (Rat & Almanjor)

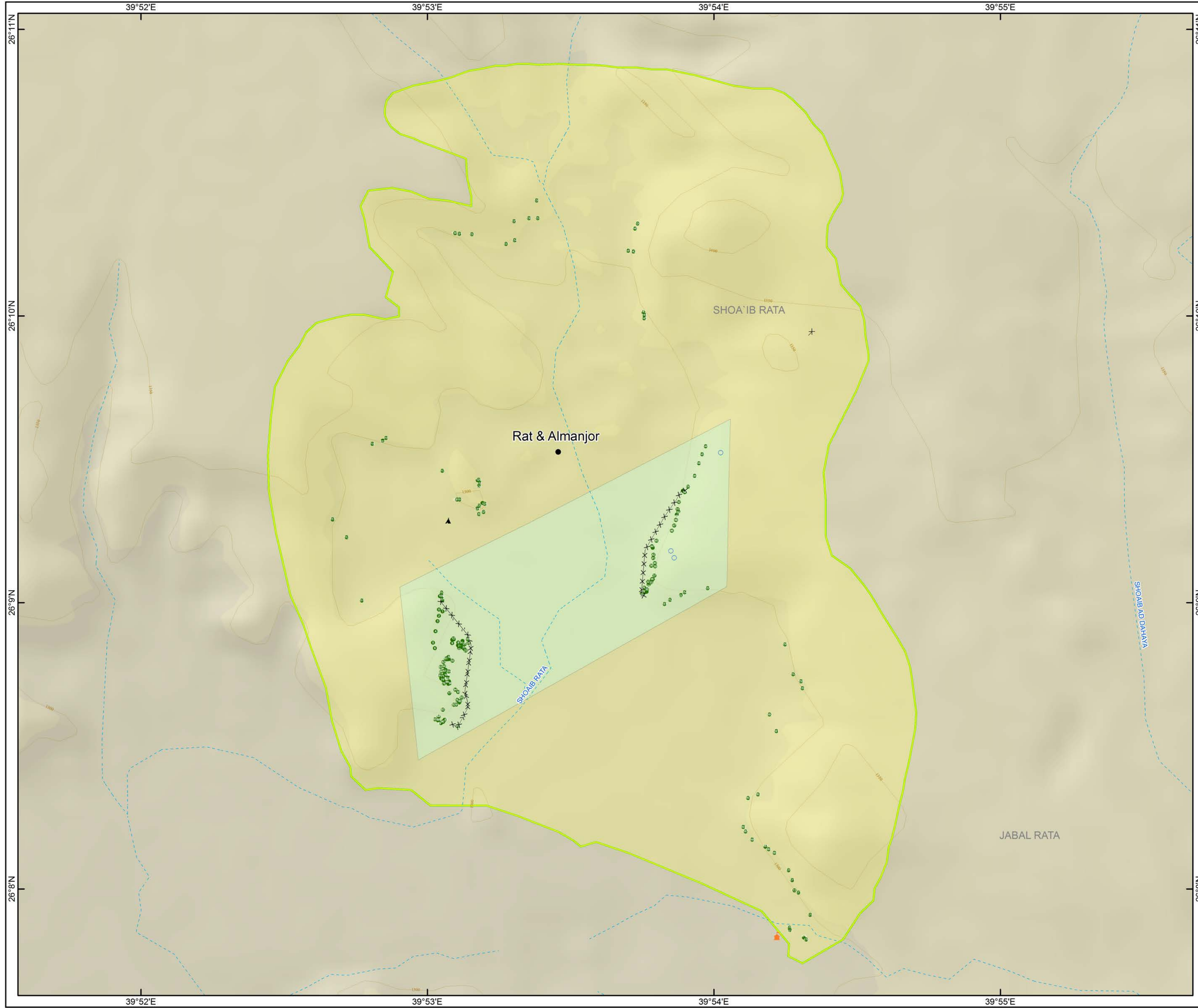
- Rock Art Sites
- Stone Structure
- 🏠 Visitors Center
- ▲ Bedouin Tent
- Fence
- Buffer Zone
- Nominated Property

**Coordinates**  
 ●  
 39°53'27.38" E  
 26°09'31.50" N



Source: Esri, DigitalGlobe, GeoEye, Iacub, USDA, USGS, AEX, Getmapping, Aerogrid, IGN, IGP, and the GIS User Community





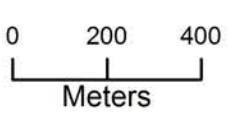
الهيئة العامة للسياحة والآثار  
Saudi Commission for Tourism & Antiquities  
تنمية مسؤولة

### Ashuwaymis Site (Rat & Almanjor)

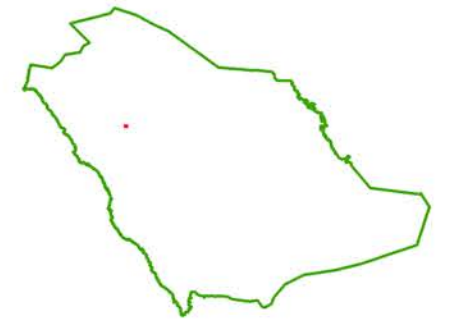
- Rock Art Sites
- Stone Structure
- 🏠 Visitors Center
- ▲ Bedouin Tent
- Contours
- ××××× Fence
- - - - - Valley
- ▭ Buffer Zone
- ▭ Nominated Property

#### Coordinates

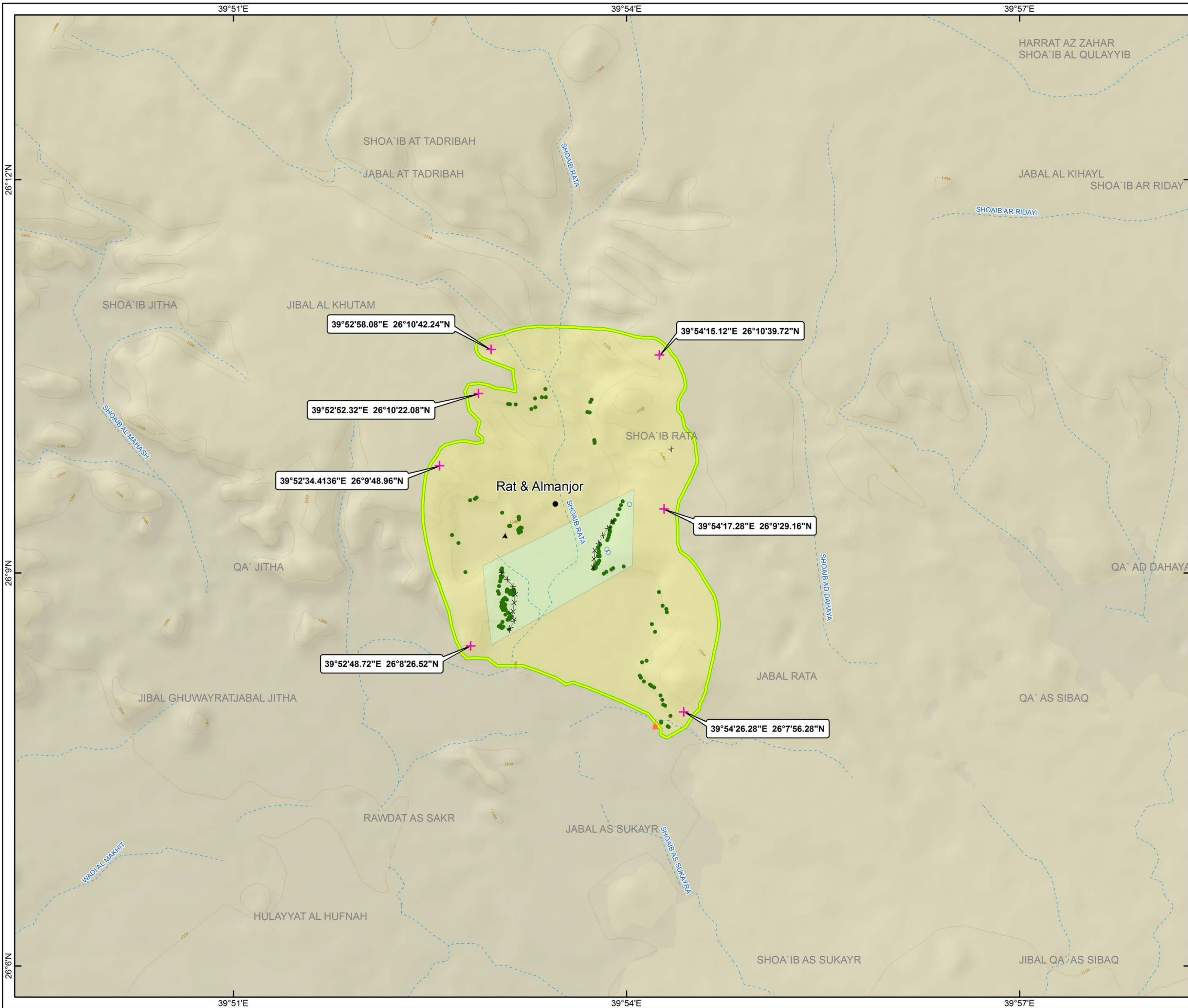
39° 53' 27.38" E  
26° 09' 31.50" N



1:16,000







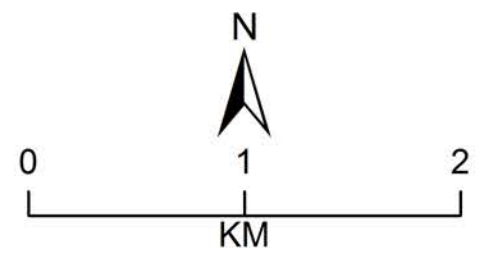
الهيئة العامة للسياحة والآثار  
Saudi Commission for Tourism & Antiquities  
تنمية مسؤولة

### Ashuwaymis Site (Rat & Almanjor)

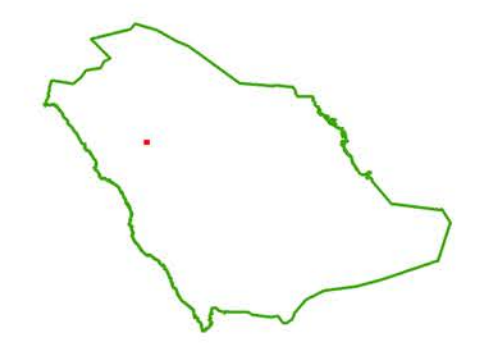
- Rock Art Sites
- + Coordinate
- Stone Structure
- ⛖ Visitors Center
- ▲ Bedouin Tent
- Contours
- ××××× Fence
- - - - - Valley
- Buffer Zone
- Nominated Property

#### Coordinates

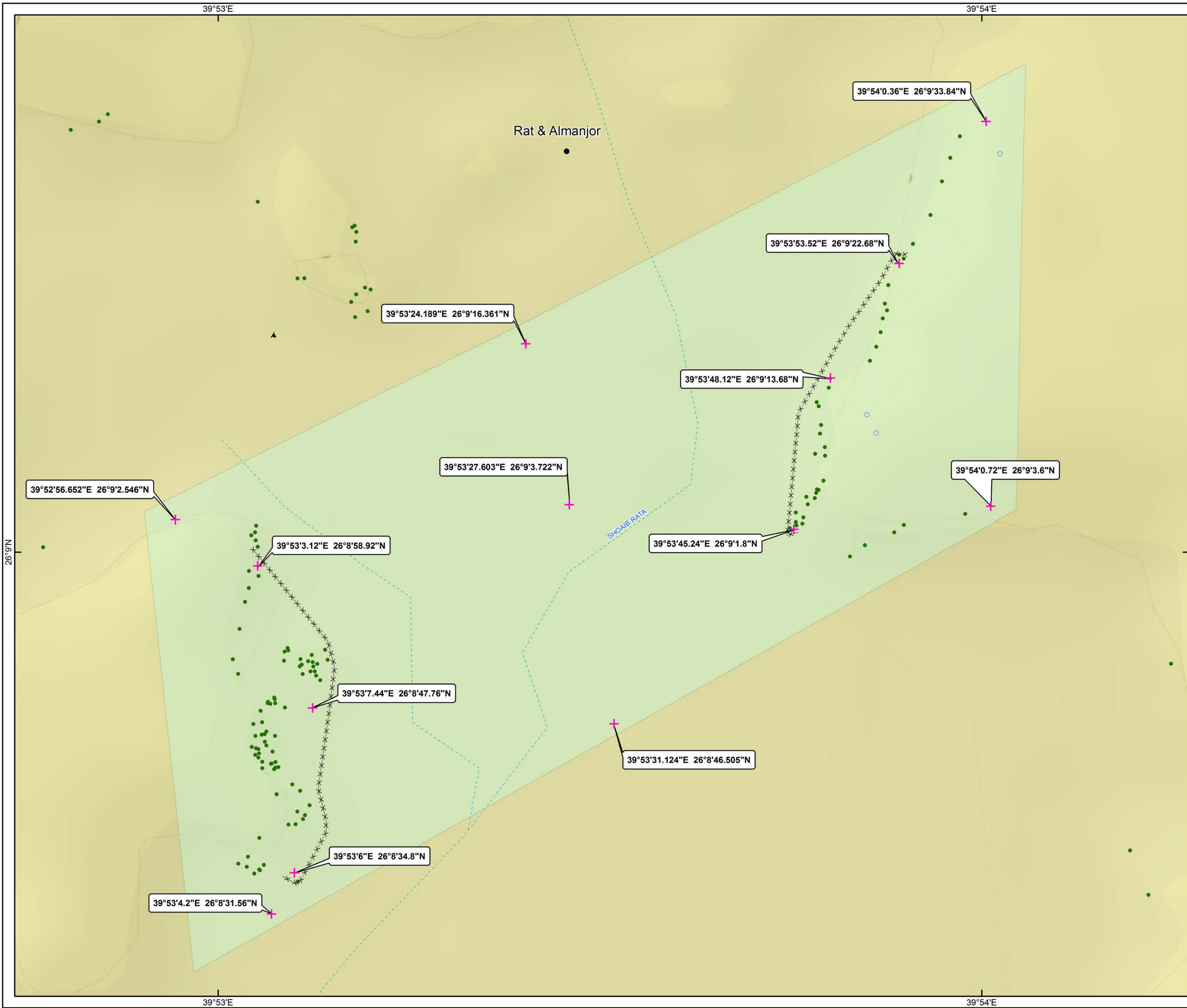
39°53'27.38"E  
26°09'31.50"N



1:35,000



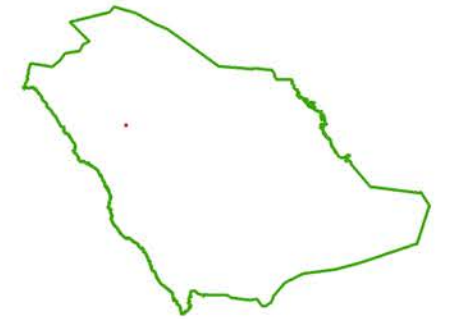
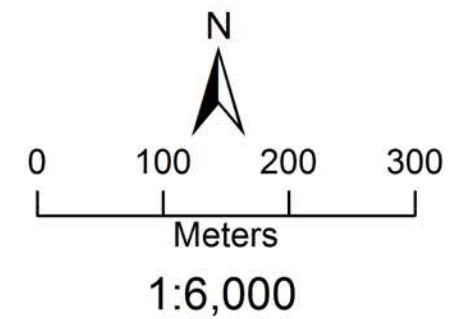




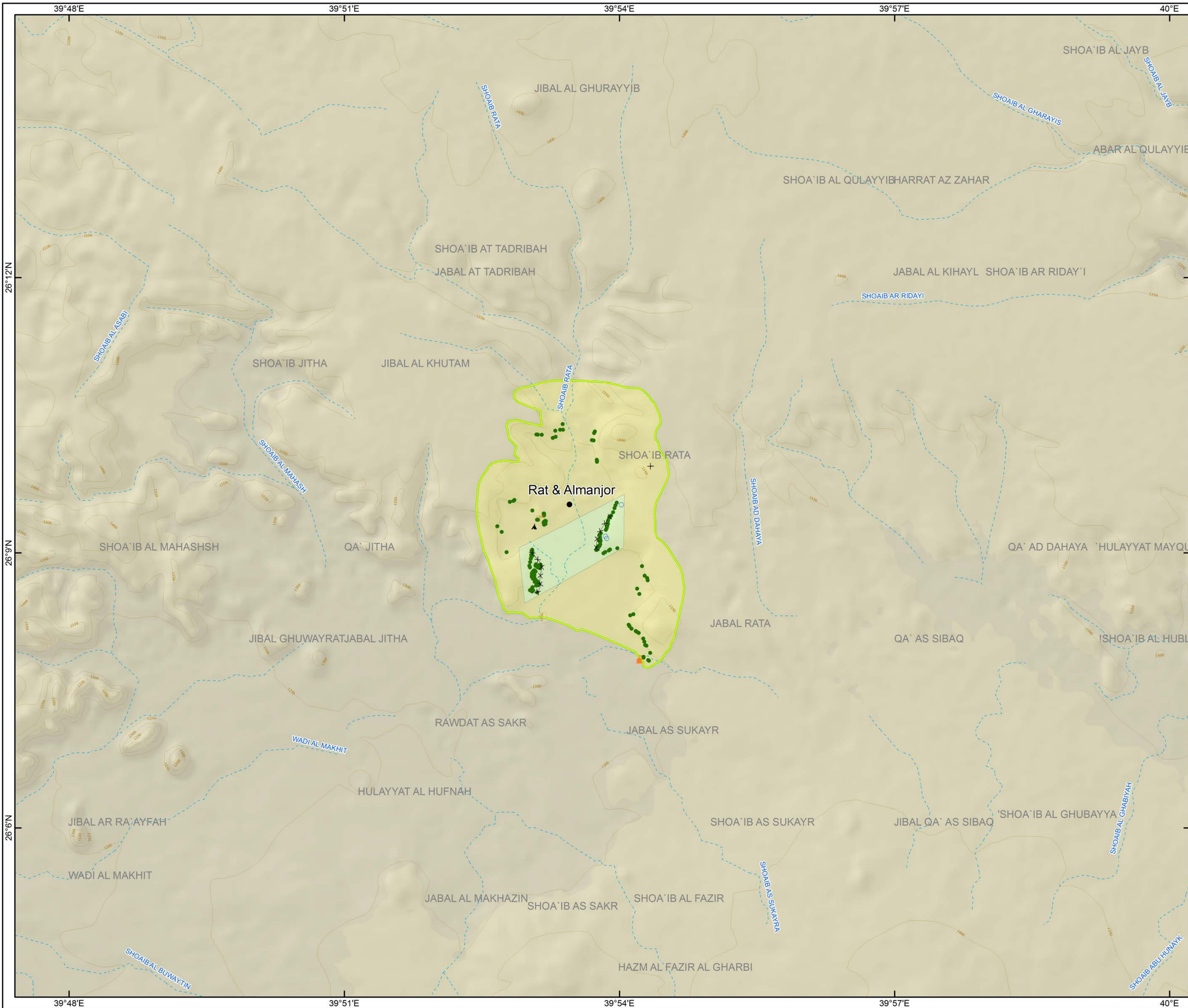
### Ashuwaymis Site (Rat & Almanjor)

- Rock Art Sites
- + Coordinate
- Stone Structure
- ▲ Bedouin Tent
- Contours
- ××××× Fence
- - - - - Valley
- 
 Nominated Property

**Coordinates**  
 ●  
 39°53'27.38"E  
 26°09'31.50"N







### Ashuwaymis Site (Rat & Almanjor)

- Rock Art Sites
- Stone Structure
- 🏠 Visitors Center
- ▲ Bedouin Tent
- Contours
- ××××× Fence
- - - - - Valley
- Buffer Zone
- Nominated Property

**Coordinates**  
 ●  
 39°53'27.38"E  
 26°09'31.50"N

0 1 2 3  
KM  
1:50,000

