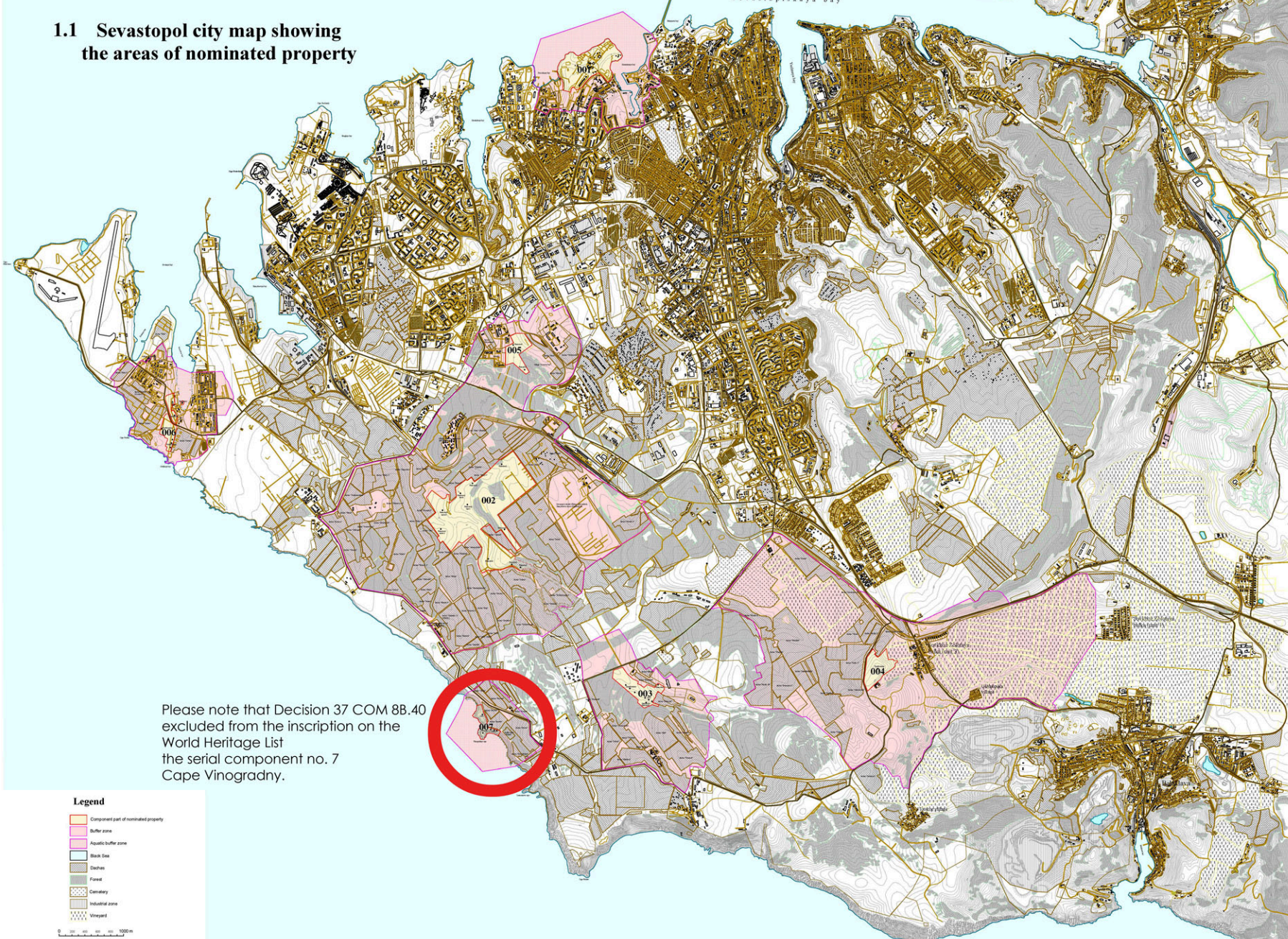


1.1 Sevastopol city map showing the areas of nominated property



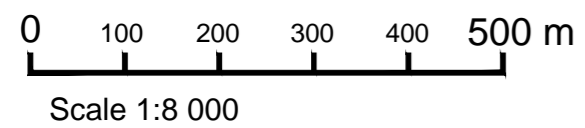
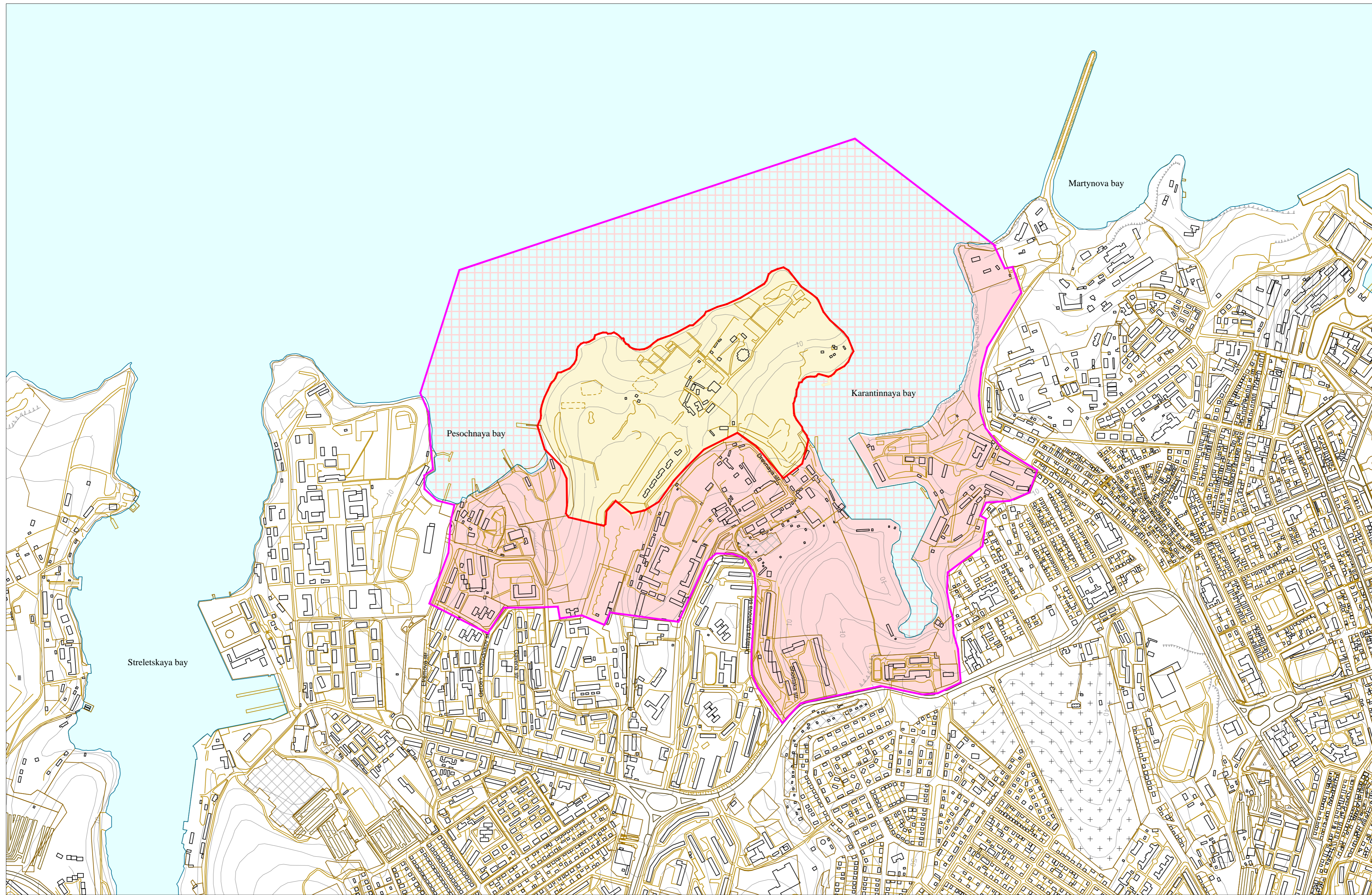
Please note that Decision 37 COM 8B.40 excluded from the inscription on the World Heritage List the serial component no. 7 Cape Vinogradny.


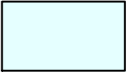


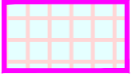
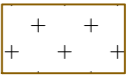
Legend

- Component part of nominated property
- Buffer zone
- Aquatic buffer zone
- Black Site
- Thicket
- Forest
- Cemetery
- Industrial zone
- Vineyard

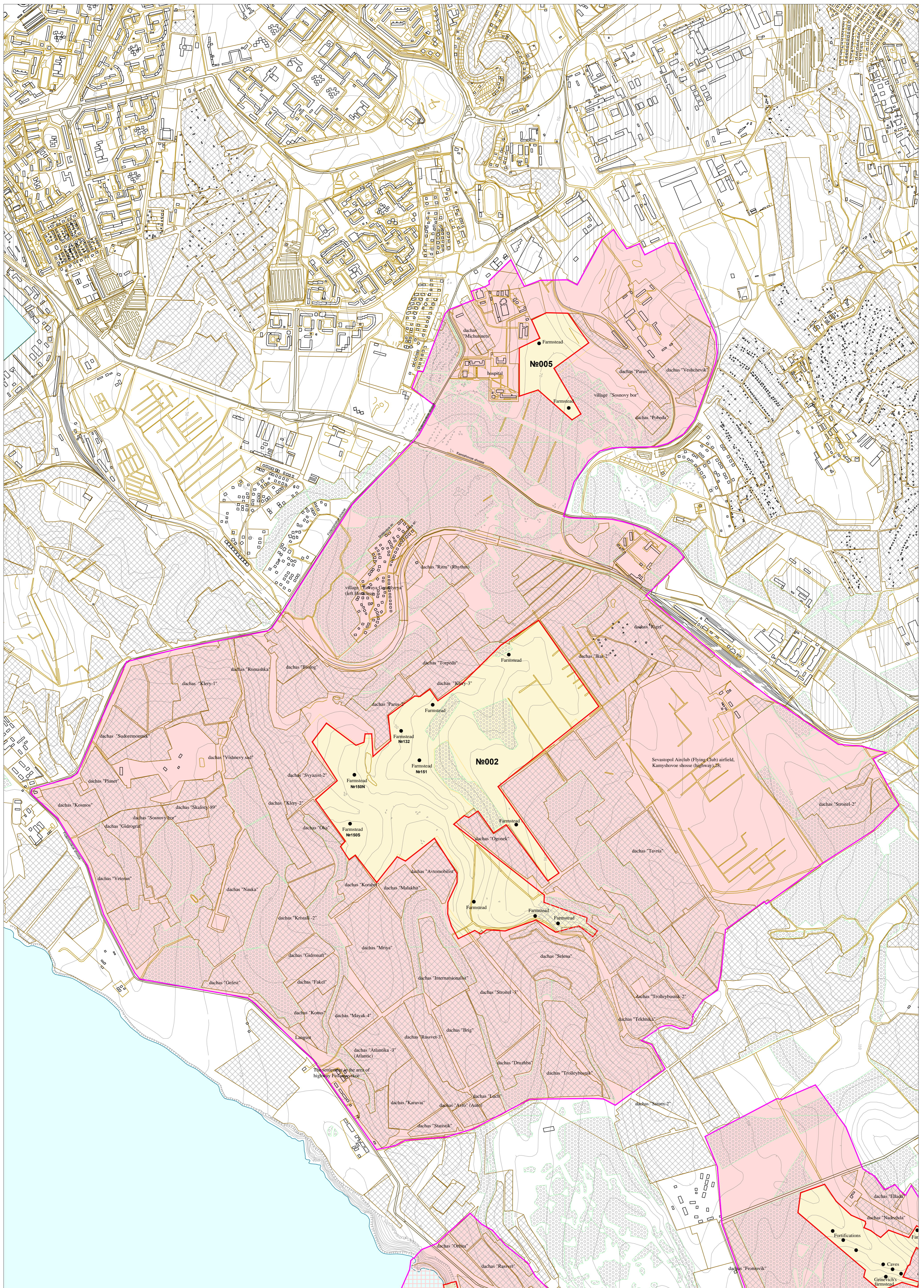
Scale 1:25000

1.2 Map of the component part №001 (Chersonese ancient city)



	Area of nominated property surface - 42,8106 ha		Black Sea
	Buffer zone surface - 97,2200 ha		Dachas
	Aquatic buffer zone surface - 110,00 ha		Cemetery
Total - 250,0306 ha			

1.3 Map of the component parts №02, 005 (Chora plots in the Yukharina Gully (№002) and the Streletskaaya Gully (№005))

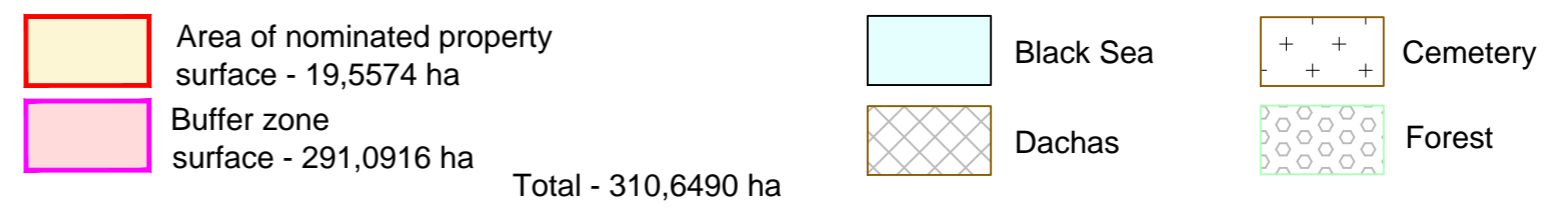
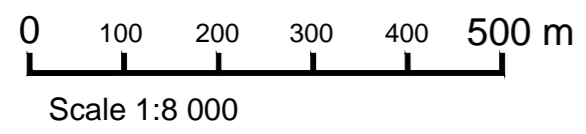
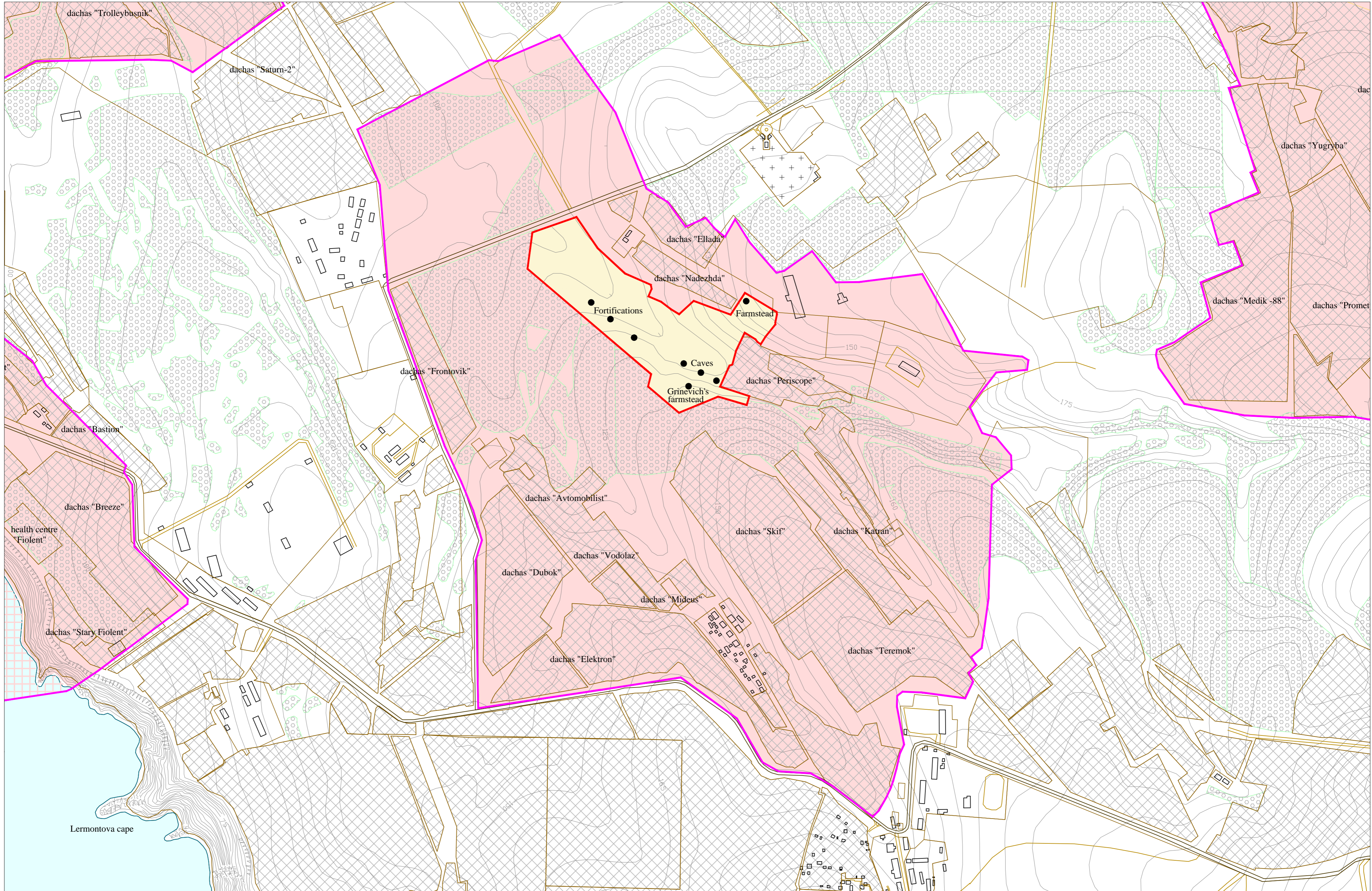


0 100 200 300 400 500 m
Scale 1:10 000

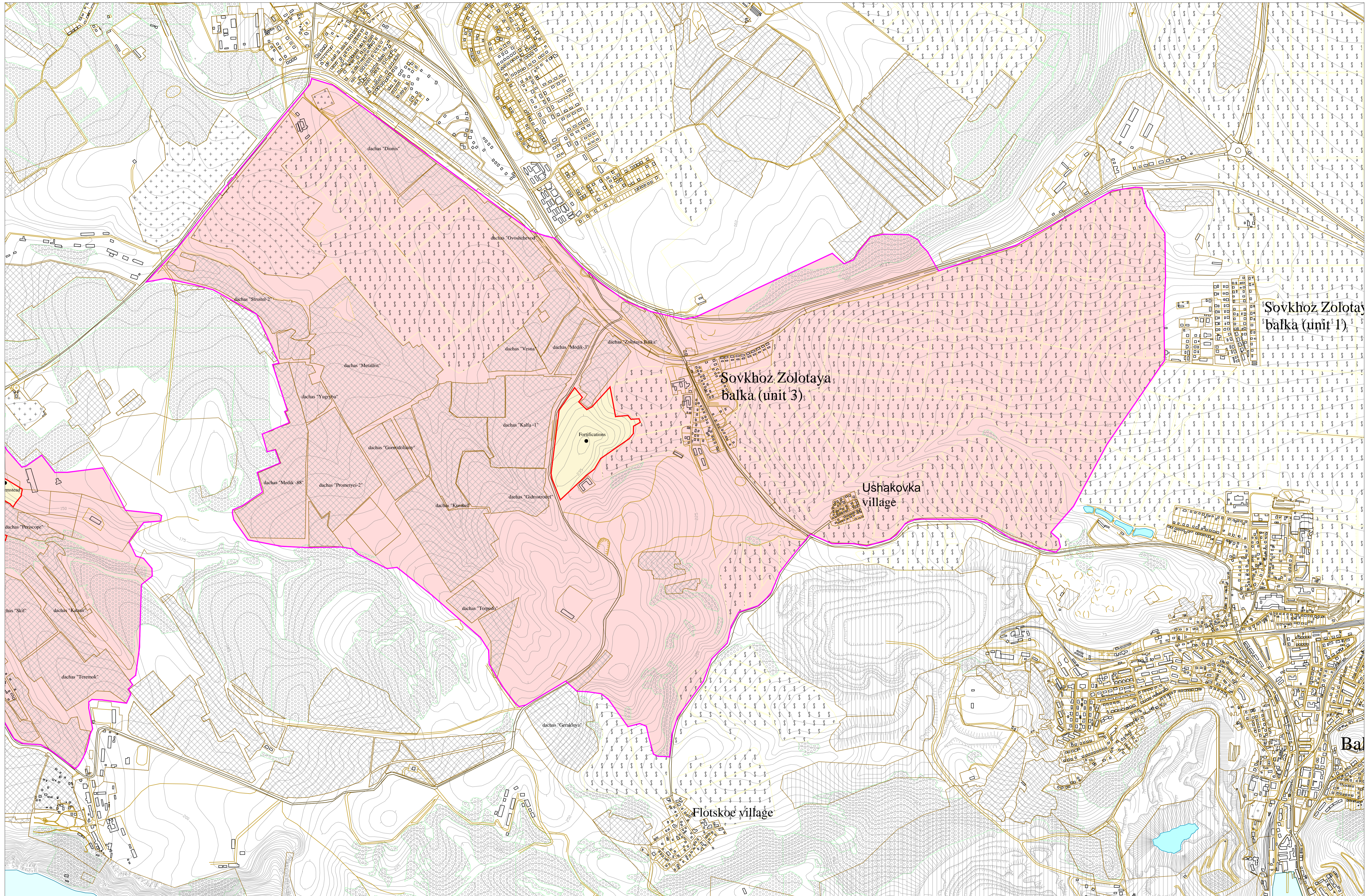
- Area of nominated property surface - 165,8891 ha
- Buffer zone surface - 1235,00 ha
- Black Sea
- Forest
- Dachas
- Industrial zone

Total - 1400,8891 ha


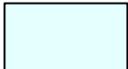





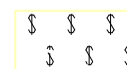
1.4 Map of the component part №003 (Chora plot in the Berman's Gully)



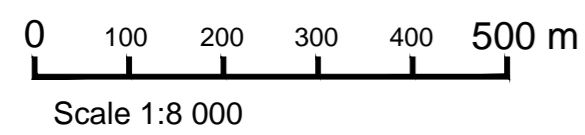
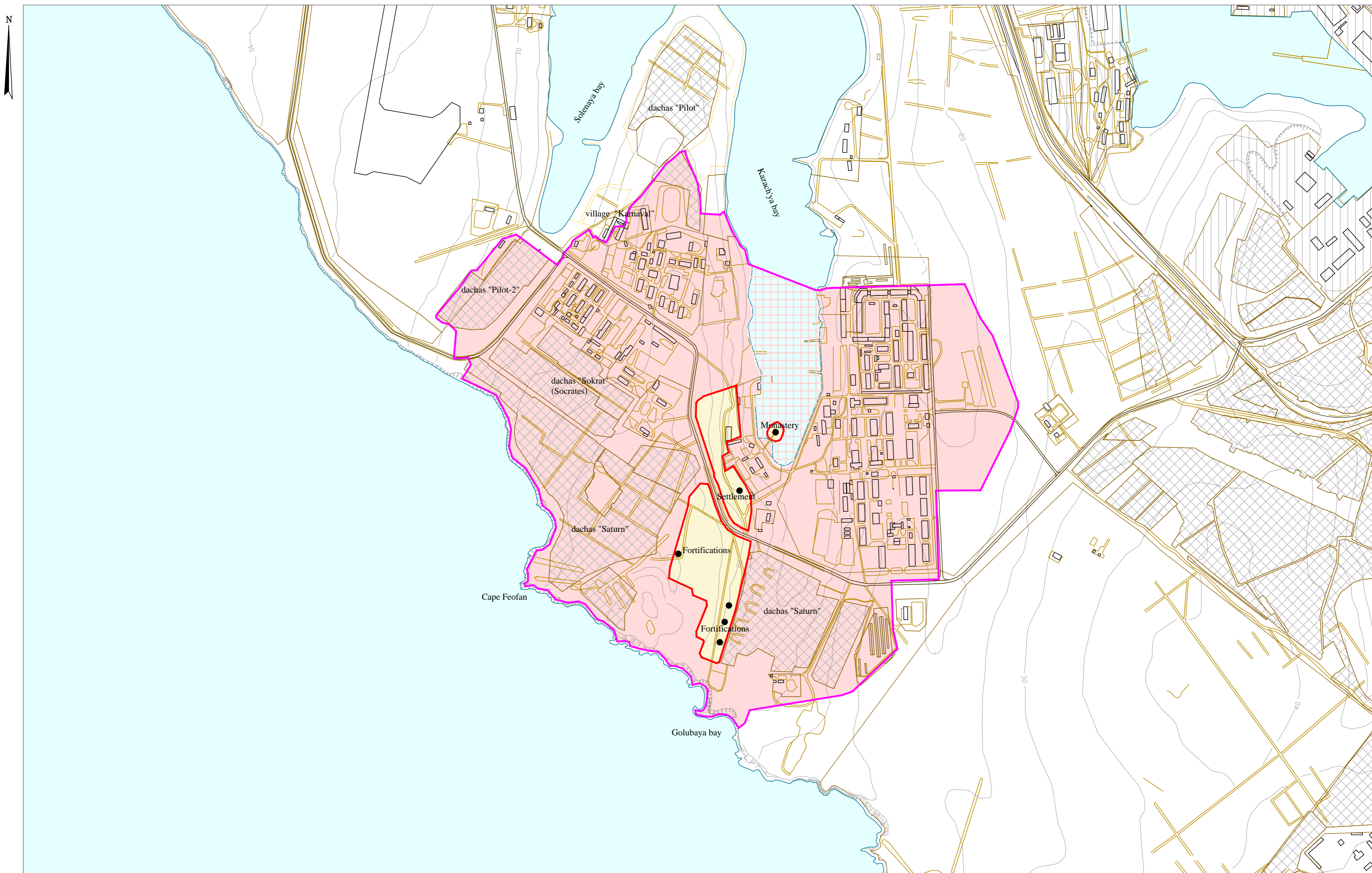
1.5 Map of the component part №004 (Chora plot on the Bezmyannaya Height)

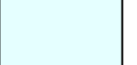


0 100 200 300 400 500 m
Scale 1:10 000

- | | | | | | |
|---|---|---|-----------|---|-----------------|
|  | Area of nominated property surface - 17,2941 ha |  | Black Sea |  | Cemetery |
|  | Buffer zone surface - 1116,00 ha |  | Dachas |  | Industrial zone |
| | Total - 1133,2941 ha |  | Forest |  | Vineyard |

1.6 Map of the component part №006 (Chora plot on the isthmus of the Mayachny peninsula)



	Area of nominated property surface - 13,8240 ha		Black Sea
	Buffer zone surface - 180,4760 ha		Dachas
	Aquatic buffer zone surface - 11,300 ha		Industrial zone
Total - 205,600 ha			