

Status and process of approval of retrospective Statements of Outstanding Universal Value

Alessandra Borch

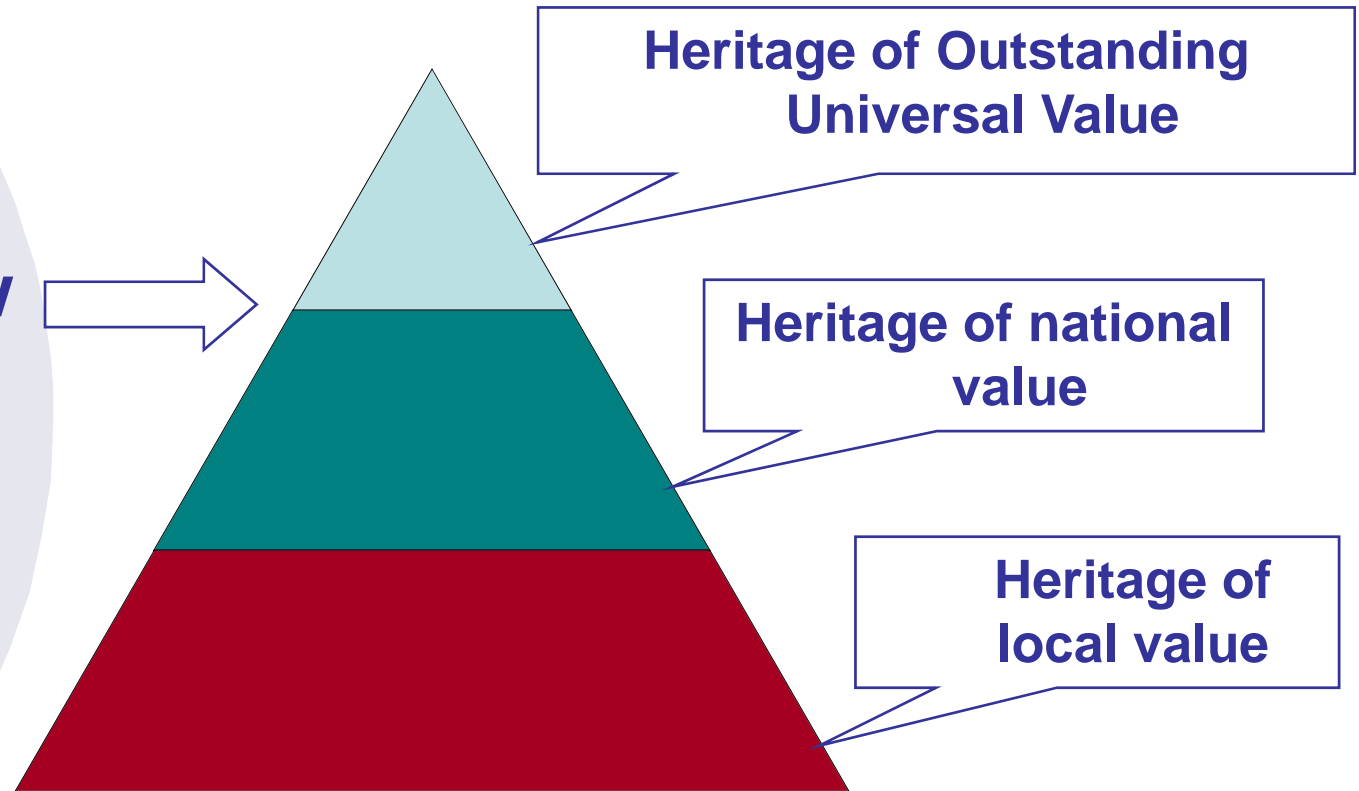
Policy and Statutory Meetings Section
UNESCO World Heritage Centre

Meeting of National Focal Points of Nordic, Baltic, Western and Mediterranean Europe and German Site Managers on the Implementation of the Second Cycle of the Periodic Reporting Exercise
Berlin, Germany, 24-26 September 2012



The Outstanding Universal Value*

Where to draw
this line?



Heritage

* This drawing is based upon the diagramme contained in the publication « Filling the gaps – an action plan for the future », Monuments and sites XII, ICOMOS, 2005, p. 95

What is a Statement of OUV

It represents a formalization, and the articulation in an agreed format, of the Outstanding Universal Value for which a property is on the World Heritage List

It was introduced in the 2005 revision of the Operational Guidelines (par. 154-155)

All properties inscribed (or extended) since 2007 have it



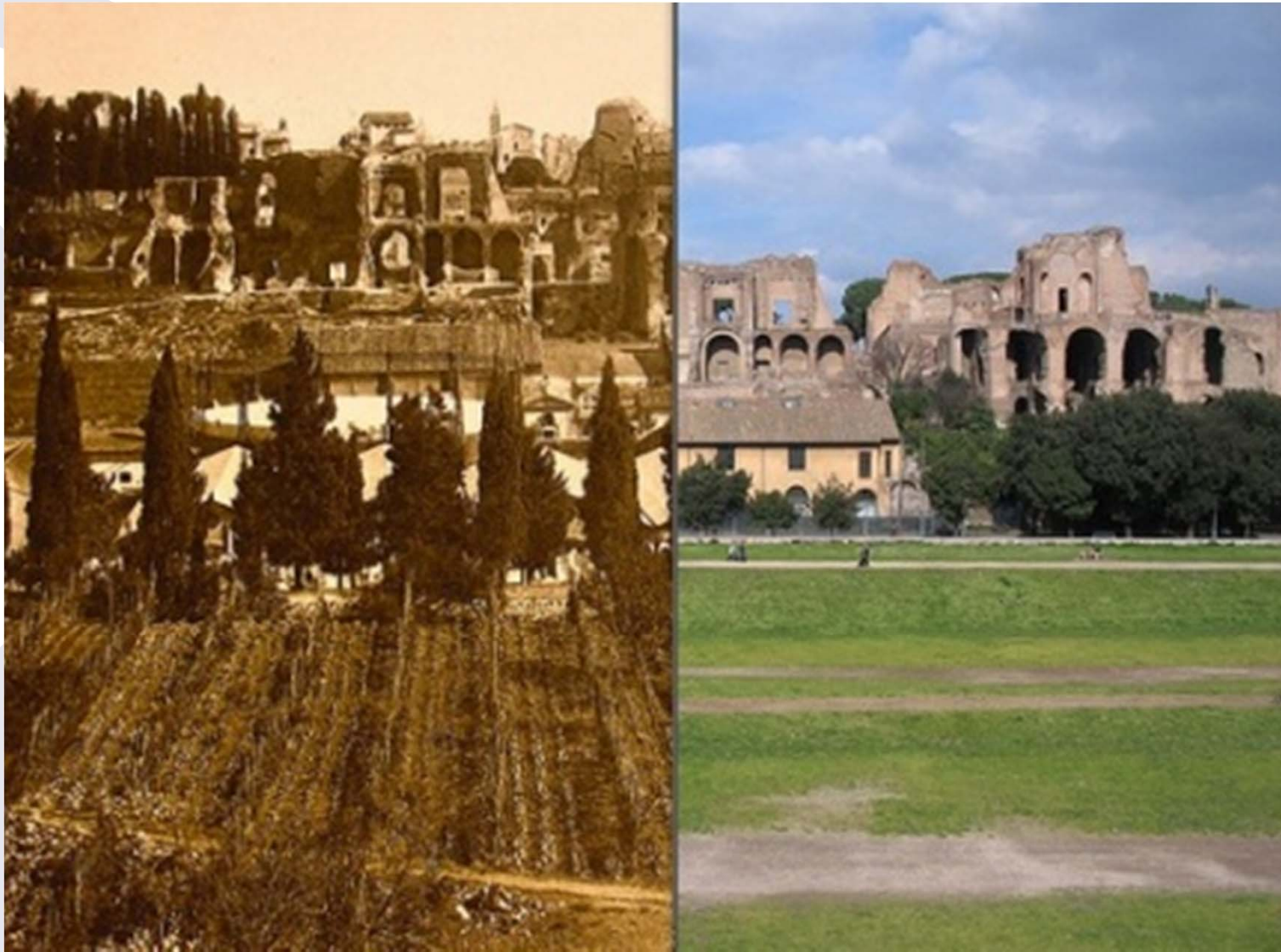
Retrospective Statement of Outstanding Universal Value

A retrospective Statement of OUV is a Statement drafted for properties that were inscribed on the World Heritage List before 2007, i.e. before the year in which requirement of a Statement, introduced in the *Operational Guidelines* in 2005, became operational.

The difference from “non retrospective” Statements lies in the time focus (at the time of the inscription/as of now)



The difference in the time focus



The format of a Statement of Outstanding Universal Value

STATEMENT OF OUTSTANDING UNIVERSAL VALUE

- Brief synthesis
 - Summary of factual information
 - Summary of qualities

At the time of the inscription
- Justification for criteria
- Integrity
- Authenticity
- (not applicable to natural properties)*
- Protection and management requirements
 - Overall framework
 - Specific long-term expectations

At the time of the inscription

At the time of the inscription/now

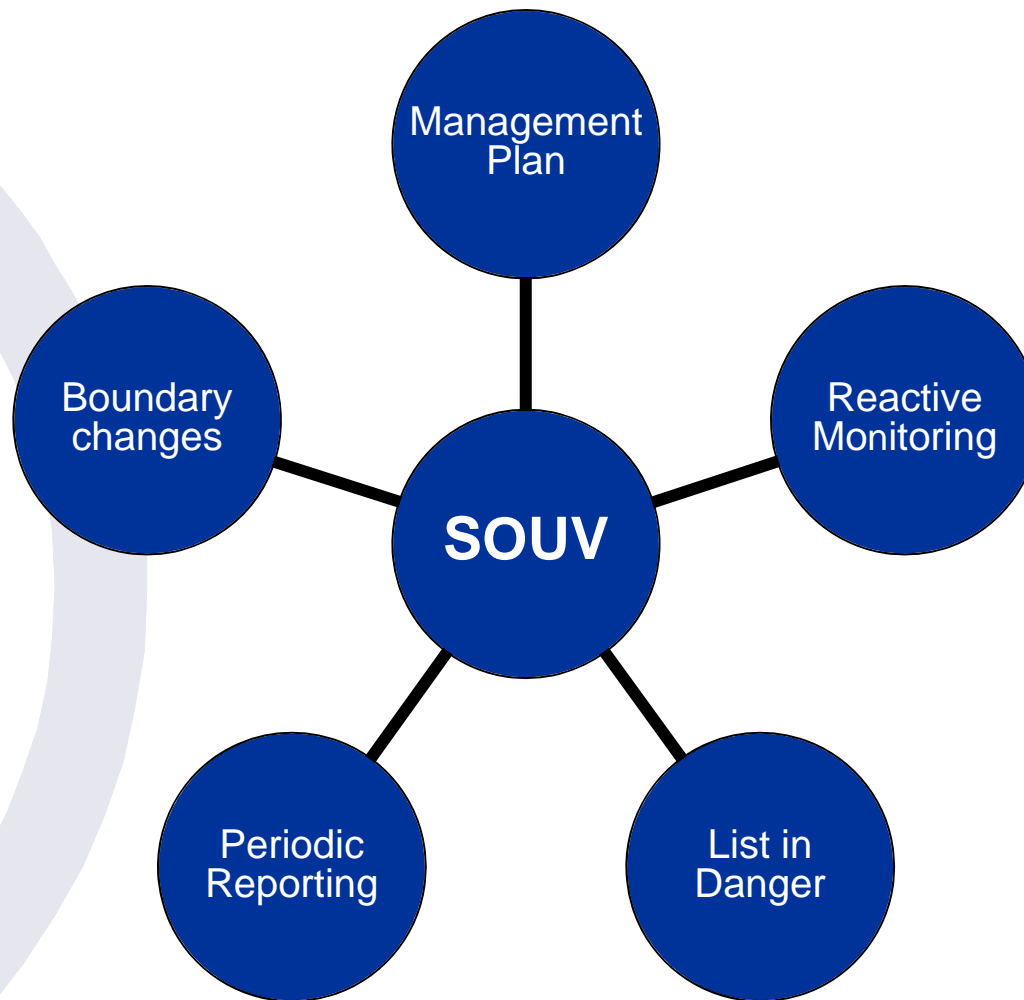
At the time of the inscription/now

Now/future

Suggested overall length: 1-2 A4 pages



A Statement of Outstanding Universal Value: what for?



A Statement of Outstanding Universal Value: whom for?



The process

1. The World Heritage Committee Decision
31COM 11D.1
2. The submission
3. The completeness check
4. The review process
5. The presentation to the World Heritage Committee
6. The publication on the website of the World Heritage Centre

Decision 31 COM 11D.1

«Recognizing the pivotal importance of Statements of Outstanding Universal Value in all World Heritage processes, urges States Parties, in cooperation with the World Heritage Centre and the Advisory Bodies, to prepare all missing Statements of Outstanding Universal Value for properties in their territory “

29 Statements of Outstanding Universal Value already adopted retrospectively by the World Heritage Committee in the Europe Region

The submission: 1 February 2012

World Heritage properties EUR/NA	462
Retrospective SOUVs expected	373
Retrospective SOUVs received	348
Retrospective SOUVs not receive	25
Retrospective SOUVs incomplete	31

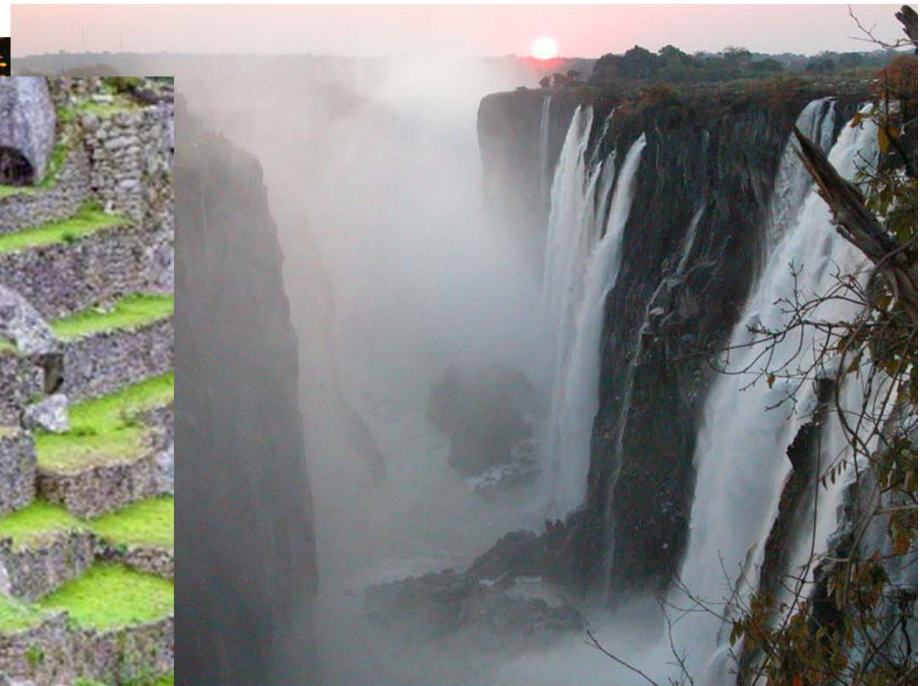
Completeness-check

- 1) Official submission
 - 2) Language
 - 3) Word version
 - 4) Length
 - 5) Name
 - 6) Area in hectares
 - 7) All the sections
 - 8) Same criteria/wording of the criteria
- 90% of the SOUV received was complete**

The missing and incomplete ones should be submitted as soon as possible

The main issues with regard to completeness/1

- Criteria: too generic and lack of identification of the attributes
 - Ex: It has witnessed settlement by successive human communities for many centuries



The main issues with regard to completeness/2

- Difference between authenticity and integrity
 - Ex: The building materials and shapes of the palaces, temples, burial chambers and funerary chapels have not been altered or modified. The relief, writings and painted scenes have equally preserved their original design, texture and color.
- Management: too generic/too precise
 - Ex: The property is very well managed
 - Ex: The 2006-2012 Management Plan is currently being reviewed in order to...
- Area in hectares
- Length

The review process

**Advisory
Body (ies)**

**World
Heritage
Centre**

**State
Party**



The presentation to the World Heritage Committee

Year	Region
2010	Arab States
2011	Africa
2012	Asia and the Pacific
2013	Latin America and the Caribbean
2014	Europe and North America



World Heritage

36 COM

Distribution Limited

WHC-12/36.COM/8E
Paris, 15 June 2012
Original: English/French

UNITED NATIONS EDUCATIONAL, SCIENTIFIC
AND CULTURAL ORGANIZATION

CONVENTION CONCERNING THE PROTECTION OF
THE WORLD CULTURAL AND NATURAL HERITAGE

World Heritage Committee

Thirty-sixth session

Saint Petersburg, Russian Federation
24 June – 6 July 2012

Item 8 of the Provisional Agenda: Establishment of the World Heritage List
and of the List of World Heritage in Danger

8E: Adoption of retrospective Statements of Outstanding Universal Value

SUMMARY

This Document presents the Draft Decision concerning the adoption of ninety-four retrospective Statements of Outstanding Universal Value submitted by thirty-six States Parties for properties which had no Statement approved at the time of their inscription on the World Heritage List.

Annex I contains the full text of the retrospective Statements of Outstanding Universal Value concerned.

Draft Decision: 36 COM 8E, see Point II.



The publication on the website of the World Heritage Centre

Liverpool – Maritime Mercantile City

Description Maps Documents Gallery Indicators

Inscription Year on the List of World Heritage In Danger: 2012

Brief Description

Six areas in the historic centre and docklands of the maritime mercantile City of Liverpool bear witness to the development of one of the world's major trading centres in the 18th and 19th centuries. Liverpool played an important role in the growth of the British Empire and became the major port for the mass movement of people, e.g. slaves and emigrants from northern Europe to America. Liverpool was a pioneer in the development of modern dock technology, transport systems and port management. The listed sites feature a great number of significant commercial, civic and public buildings, including St George's Plateau.

Other Languages:

English French Arabic Chinese Russian Spanish



Outstanding Universal Value

Brief synthesis

Located at the tidal mouth of the river Mersey where it meets the Irish Sea, the maritime mercantile City of Liverpool played an important role in the growth of the British Empire. It became the major port for the mass movement of people, including slaves and emigrants from northern Europe to America. Liverpool was a pioneer in the development of modern dock technology, transport systems and port management, and building construction.

Six areas in the historic centre and docklands of Liverpool bear witness to the development of one of the world's major trading centres in the 18th-19th and early 20th centuries. A series of significant commercial, civic and public buildings lie within these areas, including the Pier Head, with its three

 United Kingdom of Great Britain and Northern Ireland

Liverpool, England

N53 24 24 W2 59 40

Date of inscription: 2004

Criteria: (ii)(iii)(iv)

Property: 136 ha


Buffer zone: 751 ha


Ref: 1150



News

Links

 Play the World Heritage Game and find the 6 letters of UNESCO at this World Heritage site

 If you have been to Liverpool – Maritime Mercantile City recently, please give us feedback through our partner TripAdvisor



Key reference tools

Guidance on the preparation of

RETROSPECTIVE STATEMENTS OF OUTSTANDING UNIVERSAL VALUE for World Heritage Properties

July 2010



ICOMOS



WHC. 12/01
July 2012

Operational Guidelines for the Implementation of the World Heritage Convention

UNITED NATIONS EDUCATIONAL, SCIENTIFIC
AND CULTURAL ORGANISATION

INTERGOVERNMENTAL COMMITTEE
FOR THE PROTECTION OF THE
WORLD CULTURAL AND NATURAL HERITAGE



WORLD HERITAGE CENTRE



What to have on your shelves at the beginning of the 2nd Cycle of PR

- The text of the *World Heritage Convention*
- The text of the *Operational Guidelines* (2012 version)
- The publication on the outcomes of the First Cycle of Periodic Reporting in Europe (World Heritage Paper 20)
- The Section I questionnaire of the First Cycle of Periodic Reporting
- For each World Heritage property:
 - Nomination
 - Advisory Body Evaluation
 - Management Plan (if any)
 - Section II of the First Cycle (if any)
 - Last State of Conservation Report (if any)
 - Last decision of the World Heritage Committee (if any)



**Thank you for
your kind attention**

