

# The Retrospective Inventory

## Clarifying boundaries, proposals of minor boundary modifications and establishment of buffer zones

Workshop of National Focal Points of Central, South-East and Eastern European Countries on the Preparation of the Second Cycle of the Periodic Reporting Exercise on the implementation of the World Heritage Convention

Prague, Czech Republic, 26-27 May 2011



# 1. Boundary clarifications



# What is the Retrospective Inventory?

- A project launched by the World Heritage Committee in 2004 (Decision **7 EXT.COM 7.1**)
- An in-depth examination of Nominations inscribed on the World Heritage List between 1978 and 1998 to ascertain the boundaries of WH properties at the time of the inscription
- The objective of the Retrospective Inventory is to work in cooperation with States Parties in order to clarify the delimitation of WH properties at the time of the inscription



# A couple of remarks

- The Retrospective Inventory only concerns properties inscribed in the timeframe 1978 – 1998 → because Inventories of the content of Nomination files started in 1999
- The clarification of boundaries, like the submission of Statements of Outstanding Universal Value, is a retrospective exercise: its objective is to identify the delimitation or the OUV of a property **at the time of its inscription on the World Heritage List**



# The Retrospective Inventory Process

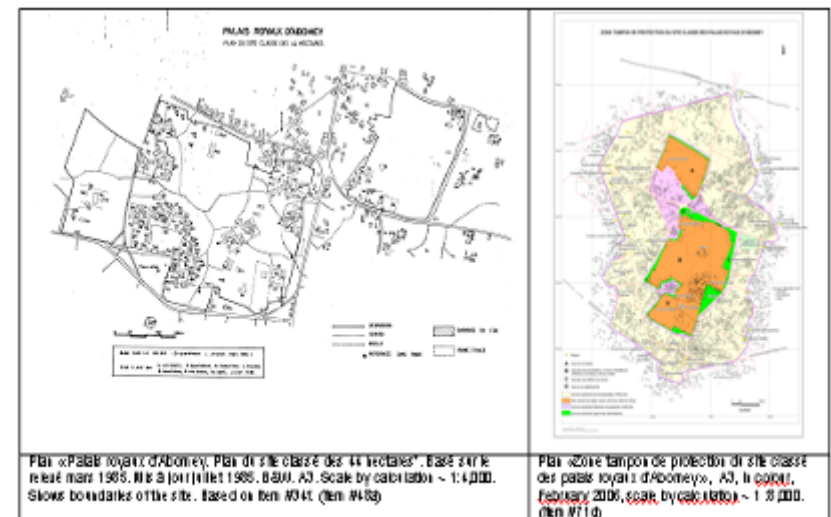
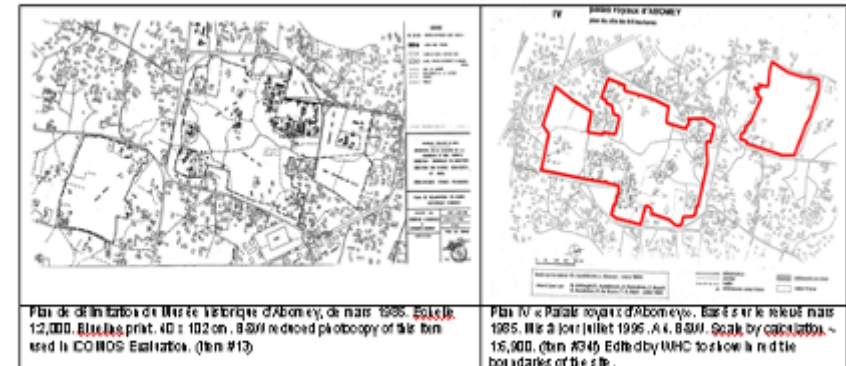
## 1) Elaboration of an Inventory of the content of each Nomination file, including maps (World Heritage Centre)

### Inventory: (#1 = WHC collection; #2 = ICOMOS collection)

01	<b>NOMINATION TEXT</b> (A4, French original, 6 pp)
02	UNESCO version (adds cover and Annex List of documentation)
03	English translation of nomination by UNESCO (7 pp)
04	Plan cadastral Section AC. A4 photocopy. On reverse stamped: "Service du CADASTRE, Département de la Vienne. Enregistré n° 067SP... 15/6/81" Echelle 1/1000. <i>[in pencil labeled Plan 1]</i>
05	Plan de Bidaut (publié dans le <i>Congrès Archéologique</i> , Poitou, 1951. Photocopy 21.5x38cm. coded to show dates of construction of different elements. scale of reduction (from bar scale) ~1:220 <i>[in pencil labeled Plan 2]</i>
06	Plan de Joly-Leterme, 1842. A4 photocopy <i>[in pencil labeled Plan 3]</i> . Collection de Monuments Historiques?, Salle de plans
07	Coupe longitudinal de Joly-Leterme, 1842. A4 photocopy <i>[in pencil labeled Plan 4]</i> , Collection de Monuments Historiques?, Salle de plans
08	Plan, coupes et élévations de Formigé, 1877. A4 photocopy of 1 sheet of drawings. <i>[in pencil labeled Plan 5]</i> Collection de Monuments Historiques?, Salle de plans
09	Vue cavalière extraite du <i>Monasticum Gallicanum</i> , 1688. A4 photocopy of a reduced print (6x8cm) of the abbey. Collection de Monuments Historiques?
10	Extrait de la Liste des Monuments Historiques donnant la délimitation exacte du site protégé au titre de la législation nationale (1 pg)
11	1 carte postale et 19 photographies, dont la liste figure à la section 3 c) de la proposition d'inscription. <i>[mounted colour and B&amp;W photographs. Some in ICOMOS collection replaced by B&amp;W photocopies]</i>
12	Catherine de Maupeou, Inspecteur des Monuments Historiques et Marie-France de Christen, "Restauration des peintres murales de la voûte de la nef à Saint-Savin-sur-Gartempe". Catalogue de l'exposition" organisée par l'Association pour l'Animation des Monuments en Poitou-Charentes à l'occasion de l'Année romane 1976. (unpaginated, 24 pp), reprinted in:
13	<i>Les Monuments Historiques de la France</i> , n°3 (1976), pp. 33-56. (photocopy)
<b>INSCRIBED BY THE 7TH SESSION OF THE COMMITTEE, 9 Dec. 1983</b>	
14	Yves-Jean RIOU, <i>L'Abbaye de Saint-Savin, Vienne</i> . Inventaire général, S.P.A.D.E.M. (1992). (64 pp)

p = Photocopy only

Date: 10/12/2004



# The Retrospective Inventory Process

2) Identification of issues concerning the delimitation of World Heritage properties (World Heritage Centre)

- Properties with a clear delimitation, but without a good map
- Properties with an unclear delimitation
- Properties without a delimitation



# The Retrospective Inventory Process

3) Transmission of a letter to the State Party, presenting the problems identified for each property and requesting the information needed to solve them (World Heritage Centre)



United Nations Educational, Scientific and Cultural Organization  
Organisation des Nations Unies pour l'éducation, la science et la culture

7, place de Fontenay  
75352 Paris 07 SP

Tel. : + 33 (0) 1 45 68 15 71  
Fax : + 33 (0) 1 45 68 55 70

Ref. : WHC/74/19/PST

27 June 2005

Subject: **Retrospective Inventory project: Geographic Identification of World Heritage Properties in Italy**

Dear Sir/Madam,

I would like to inform you that the World Heritage Centre has launched a **Retrospective Inventory Project** to identify gaps and omissions in all nomination files of sites inscribed on the World Heritage List between 1978 and 1998.

The immediate goal of this project is to identify those sites that do not yet have clearly defined boundaries or maps, and to request the States Parties to provide improved maps and other necessary information. This will contribute toward better documentation of the World Heritage sites, which then will be used for the work of the World Heritage Committee, the World Heritage Centre, the Advisory Bodies, States Parties to manage and monitor properties on the World Heritage List.

Please kindly refer to the attached excerpts from the Inventory Forms concerning the following World Heritage sites:

IT-93	Church and Dominican Convent of Santa Maria delle Grazie with "The Last Supper" by Leonardo da Vinci
IT-94	Rock Drawings in Valcamonica
IT-174	Historic Centre of Florence
IT-304	Venice and its Lagoon
IT-305	Piazza del Duomo, Pisa
IT-398rev	Castel del Monte
IT-549rev	18th-Century Royal Palace at Caserta, with the Park, the Aqueduct of Vanvitelli, and the San Leucio Complex
IT-550	Historic Centre of San Gimignano
IT-670	I Sassi di Matera

... / ...

Arch. Mameo Roberto Guido  
Dipartimento per la Ricerca, l'Innovazione e l'Organizzazione  
Ufficio Lista del Patrimonio Mondiale UNESCO  
Ministero per i Beni e le Attività Culturali  
Via del Collegio Romano, 27  
00186 Roma

## IT-717 Historic Centre of Siena

Date(s) inscribed: 1995

Received: 15/09/1994

The inventory of the nomination files indicates that the boundary of the World Heritage site of the **Historic Centre of Siena** is represented by the following maps, submitted with the nomination in 1994.



The boundaries of the inscribed property are clearly defined. However, the maps lack coordinates or a coordinate grid to allow digitization of the boundary.

### Information requested:

- ? Please submit the largest scale topographic or cadastral map available which clearly shows the boundaries of the inscribed property and its protective buffer zone. Please ensure that the maps show both a bar scale and clearly labelled coordinate grid.
- ? Please indicate the size in hectares of the property and its buffer zone.

# The Retrospective Inventory Process

## 4) Submission of the relevant information to the World Heritage Centre (States Parties)

- By official letter
- Two printed copies (three for mixed properties)
- 2 CD (the electronic version of the maps should be in .jpg, .pdf or .tiff formats)





# The Retrospective Inventory Process

5) Review of the information submitted, in order to verify whether it corresponds to the situation of the property at the time of the inscription (World Heritage Centre)

- If the delimitation displayed on the map corresponds to the situation of the property at the time of the inscription, the map will be inserted in the working document containing all boundary clarifications, for presentation to the World Heritage Committee
- If the delimitation displayed on the map does not correspond to the situation of the property at the time of the inscription, the State Party will be invited to revise the map or submit a proposal for a boundary modification (minor or significant)



# The Retrospective Inventory Process

## 6) Presentation of all “clarifications” to the World Heritage Committee for noting (World Heritage Centre)



**World Heritage** **33 COM**

Distribution Limited

WHC-09/33.COM/8D  
Paris, 10 May 2009  
Original: English/French

UNITED NATIONS EDUCATIONAL, SCIENTIFIC  
AND CULTURAL ORGANIZATION

CONVENTION CONCERNING THE PROTECTION OF  
THE WORLD CULTURAL AND NATURAL HERITAGE

WORLD HERITAGE COMMITTEE

Thirty-third Session

Seville, Spain  
22 – 30 June 2009

**Item 8D of the Provisional Agenda: Clarifications of property boundaries and sizes by States Parties in response to the Retrospective Inventory**

Clarifications of property boundaries and sizes by States Parties in response to the Retrospective Inventory

### SUMMARY

This document presents the results of the Retrospective Inventory of Nomination dossiers of European World Heritage properties inscribed in the period 1978-1998 (conducted in coordination with the European Periodic Reporting exercise) and Arab World Heritage properties inscribed between 1978 and 1998 (in view of the launching of the second cycle of Periodic Reporting).

Forty-five States Parties have responded to the letters dispatched following the review of the individual dossiers in order to clarify the original intention of their Nominations (or to submit appropriate cartographic documentation) for 154 World Heritage properties.

**Draft Decision:** 33 COM 8D, see Point IV

### ANNEX: Clarifications of property boundaries and sizes by States Parties

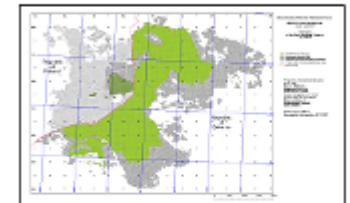
All maps presented in this document are consistent with the decision of the World Heritage Committee at the time of inscription, and/or the evaluation of the relevant Advisory Body and/or the Nomination.

#### EUROPEAN PROPERTIES

##### AUSTRIA

Property	Salzkammerguter Railway
Inscription	2001/2002
Date of inscription	1997
Area of the inscribed property	136 40 km <sup>2</sup>
Area of the DMZ/DMZ zone	888 121 km <sup>2</sup>
Date of receipt of the clarifications	20/11/2008

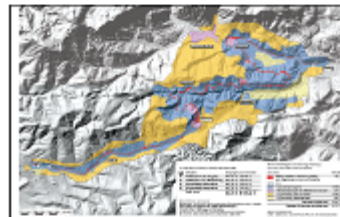
**Technical Summary:**  
The State Party has provided a clear map of the site, displaying the boundaries of the inscribed property and its buffer zone. The area in between of the inscribed property and its buffer zone has also been indicated.



##### BULGARIA

Property	Thracian Ruins
Inscription	2003/2003
Date of inscription	1979
Area of the inscribed property	1.2 km <sup>2</sup>
Area of the DMZ/DMZ zone	801.7 km <sup>2</sup>
Date of receipt of the clarifications	15/06/2008

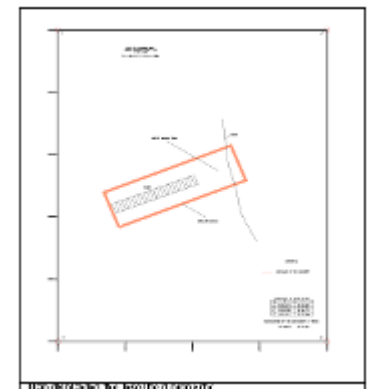
**Technical Summary:**  
The State Party has provided clear maps of the site, displaying the boundaries of the inscribed property and its buffer zone. The area in between of the inscribed property and its buffer zone has also been indicated.



##### BEARUSPOLAND

Property	Białowieża Forest
Inscription	1979/1979
Date of inscription	1979/1979
Area of the inscribed property	22678 km <sup>2</sup>
Date of receipt of the clarifications	20/11/2008

**Technical Summary:**  
The States Parties of Belarus and Poland have submitted jointly a clear map of the site, displaying the boundaries of the inscribed property. The area in between of the inscribed property has also been indicated.



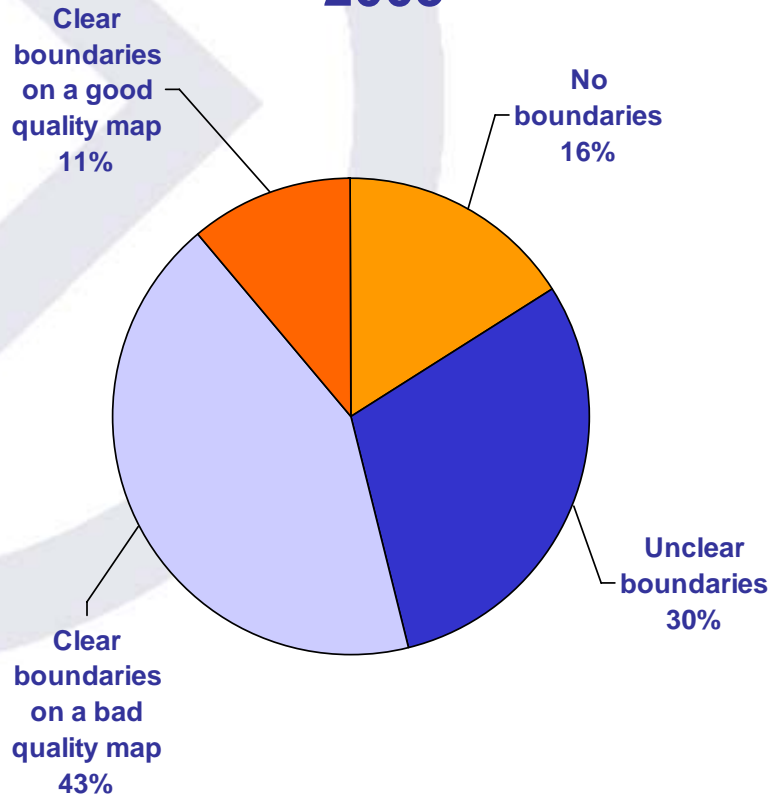
# The Retrospective Inventory Process in Europe

- 1) Elaboration of an Inventory of the content of the Nomination file and identification of the issues concerning the delimitation of World Heritage properties (September 2004 – July 2005)
- 2) Transmission of a letter to the relevant State Party, presenting the problems identified for each property and requesting the information needed to solve them (January 2005 – October 2005)
- 3) Submission of the relevant information by States Parties and review of such information by the World Heritage Centre (June 2005-ongoing)
- 4) Presentation of all satisfactory information to the World Heritage Committee for noting (2006-ongoing)
- 5) 14 boundary clarifications are still expected for properties located in Central, South-East and Eastern European Countries and need to be submitted (1st December 2011)

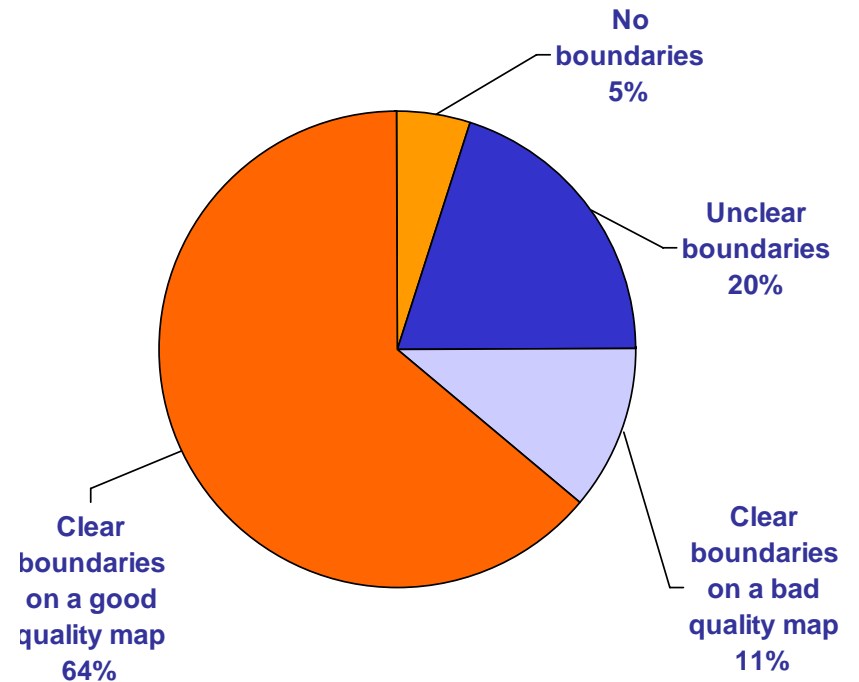


# Following the launching of the Retrospective Inventory in CESEE, the number of WH properties presenting clear boundaries on a good quality map has increased by six times

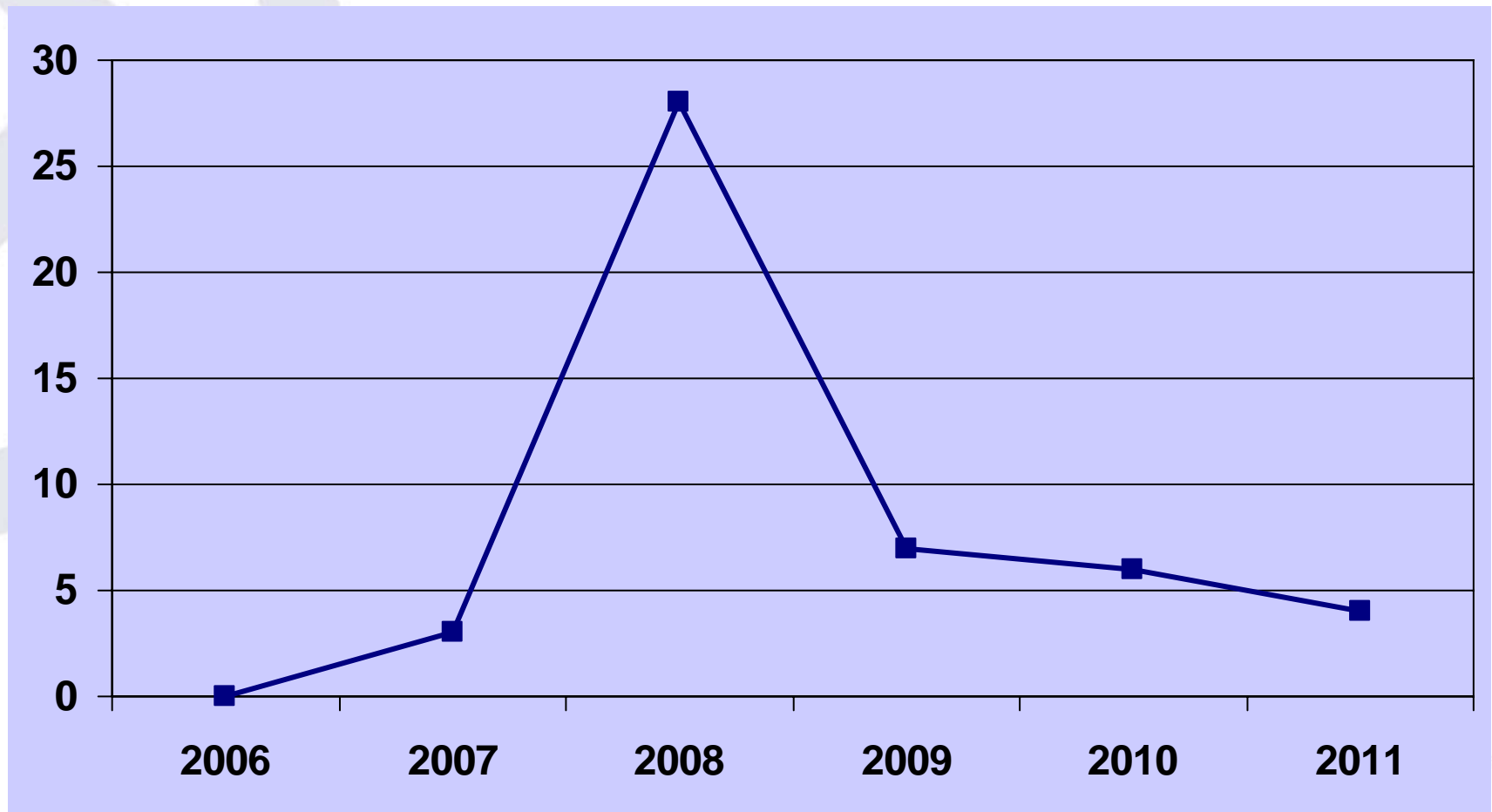
2005



2011



# The presentation of boundary clarifications to the World Heritage Committee between 2006 and 2011



# What are the expected outcomes?

Clarifying the boundaries of World Heritage properties in your countries has served/serves the following purposes:

- favouring a common understanding of the extent of a property by the World Heritage Centre and the State Party concerned;
- allowing a more efficient site management;
- updating and improving the quality of the information available at the World Heritage Centre on Asian and Pacific World Heritage properties.

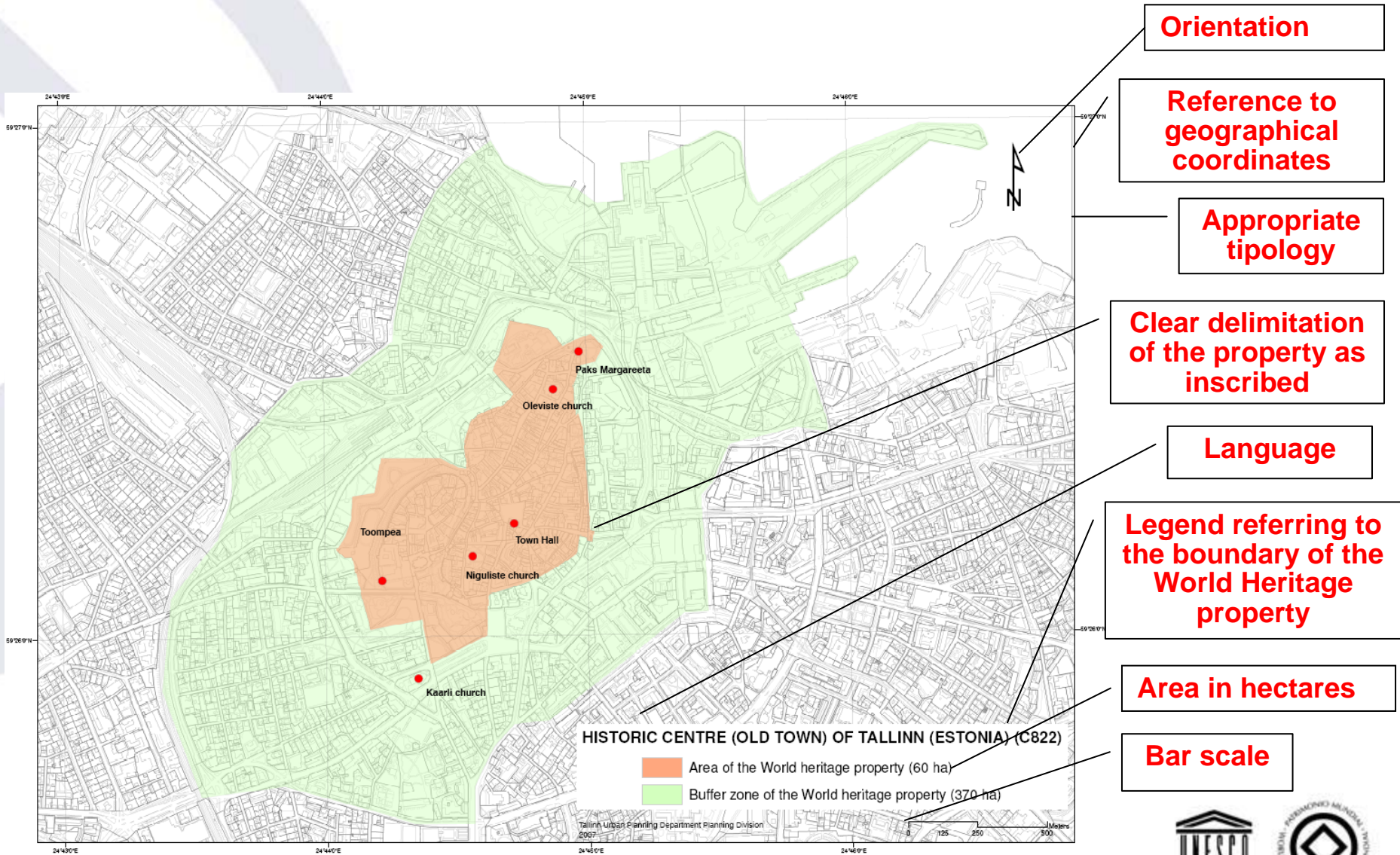


# Requirements for complete maps

- The appropriate typology
- A clear delimitation of the property as inscribed
- A bar scale
- References to geographical coordinates
- The orientation
- A legend referring to the boundary of the World Heritage property
- The language
- The area in hectares



# Summing up



**Orientation**

**Reference to geographical coordinates**

**Appropriate tipology**

**Clear delimitation of the property as inscribed**

**Language**

**Legend referring to the boundary of the World Heritage property**

**Area in hectares**

**Bar scale**



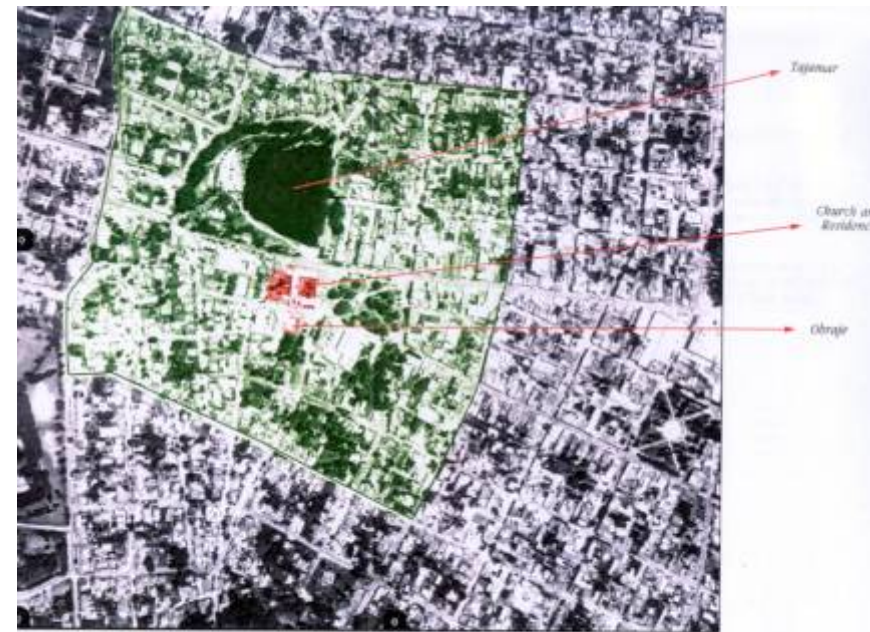
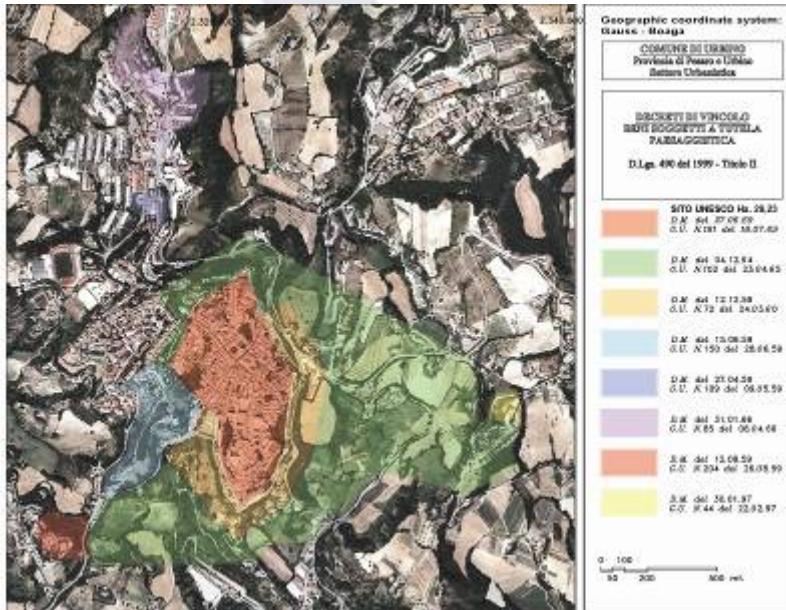


# Other important elements for maps

- The date
- The name of the authority which produced the map
- The identification of the legal text protecting the inscribed property and (if relevant) its buffer zone



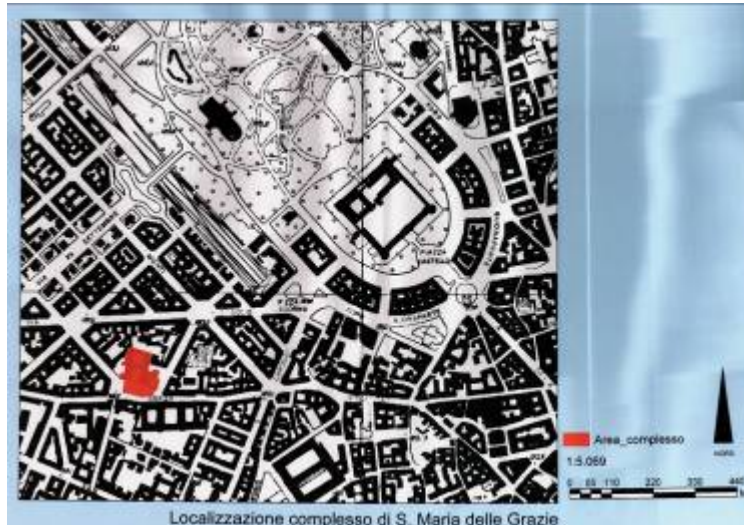
# Aerial photographs



Alta Gracia

Scale 1:5.000

Aerial Photograph - The Property and the Buffer zone



Localizzazione complesso di S. Maria delle Grazie



## 2. Minor boundary modifications



# Operational Guidelines

## Minor modifications to the boundaries

**163.** A minor modification is one which has not a significant impact on the extent of the property nor affects its outstanding universal value.

**164.** If a State Party wishes to request a minor modification to the boundaries of a property already on the World Heritage List, it shall submit this by **1 February** to the Committee through the Secretariat, which will seek the advice of the relevant Advisory Bodies. The Committee can approve such modification, or it may consider that the modification to the boundary is sufficiently important to constitute an extension of the property, in which case the procedure for new nominations will apply.

## Significant modifications to the boundaries

**165.** If a State Party wishes to significantly modify the boundary of a property already on the World Heritage List, the State Party shall submit this proposal as if it were a new nomination. This re-nomination shall be presented by **1 February** and will be evaluated in the full year and a half cycle of evaluation according to the procedures and timetable outlined in paragraph 168. This provision applies to extensions, as well as reductions.



Modification of  
the property boundaries

Creation of  
a buffer zone

Modification of  
a buffer zone

**Any change to the original delimitation of the World Heritage property (or of its buffer zone) accomplished at the national level needs to be reviewed by the Advisory Bodies and approved by the World Heritage Committee**

Par. 163 - 165 of the  
*Operational Guidelines*



# The differences between boundary clarifications and minor boundary modifications

- 1) the process;
- 2) the deadline;
- 3) the documentation to be submitted.



# First Cycle of Periodic Reporting

**Question 3.1: are the boundaries of the site adequate to reflect the site's significance?**

- Yes: 78%
- No: 22%

For 10 properties, the State Party has expressed the wish to propose a boundary change (but only in two cases such a change has actually been proposed)



# First Cycle of Periodic Reporting

## Question 3.1: is there a buffer zone for the site?

- Yes: 77%

In some of these cases, a buffer zone has been created after the inscription of the property and never formally submitted to the World Heritage Committee for approval

- No: 23%

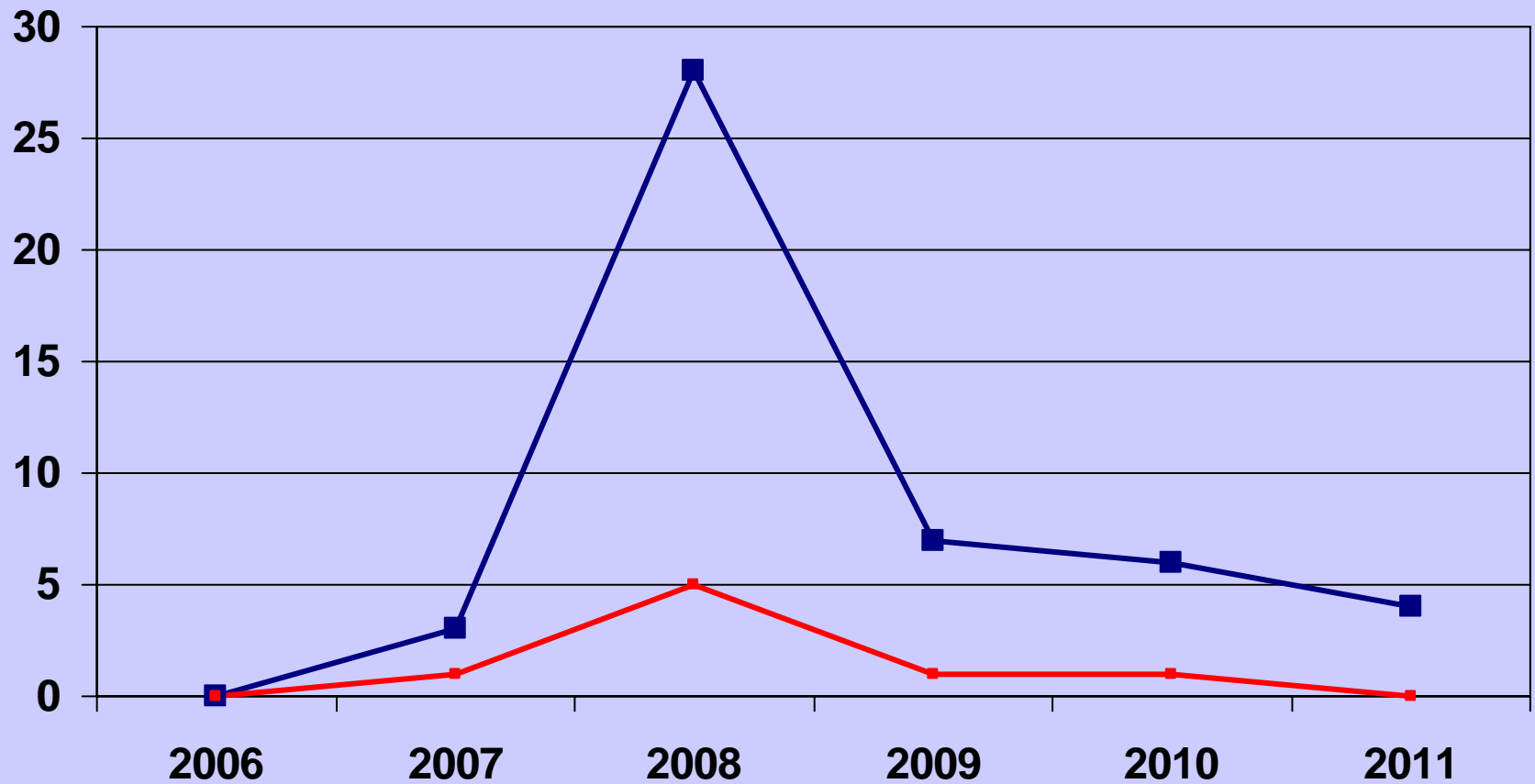
For 12 properties, the State Party has expressed the wish to propose a buffer zone (but only in two cases such a change has actually been proposed)

For 8 properties, the State Party has expressed the wish to modify the buffer zone (but only in one case such a change has actually been proposed)





# The presentation of boundary clarifications and minor boundary modifications to the World Heritage Committee between 2006 and 2011



# Modifications to boundaries and annual quota of 2 Nominations

- Minor modifications do not affect the quota
- Significant modifications do

**BUT**

Significant modifications, if anticipated in Section II, will exceptionally not affect the quota. This rule only applies to the two 1st February deadlines after the conclusion of the Periodic Reporting Cycle in the Region




# A remark on minor boundary modifications

In 2007, the World Heritage Committee acknowledged that the Advisory Bodies could not review proposals for minor boundary modifications (including the establishment of a buffer zone) whenever the delimitation of the concerned property as inscribed was unclear.

Therefore, States Parties are requested to submit boundary clarifications **before and as a condition to** submit proposals for minor boundary modifications.

This can happen either through a submission in two different years or through a submission on two different maps (one showing only the property as inscribed and the other one showing the property as proposed modified).





**Thank you**  
**For any additional**  
**information**  
**[a.borchi@unesco.org](mailto:a.borchi@unesco.org)**

