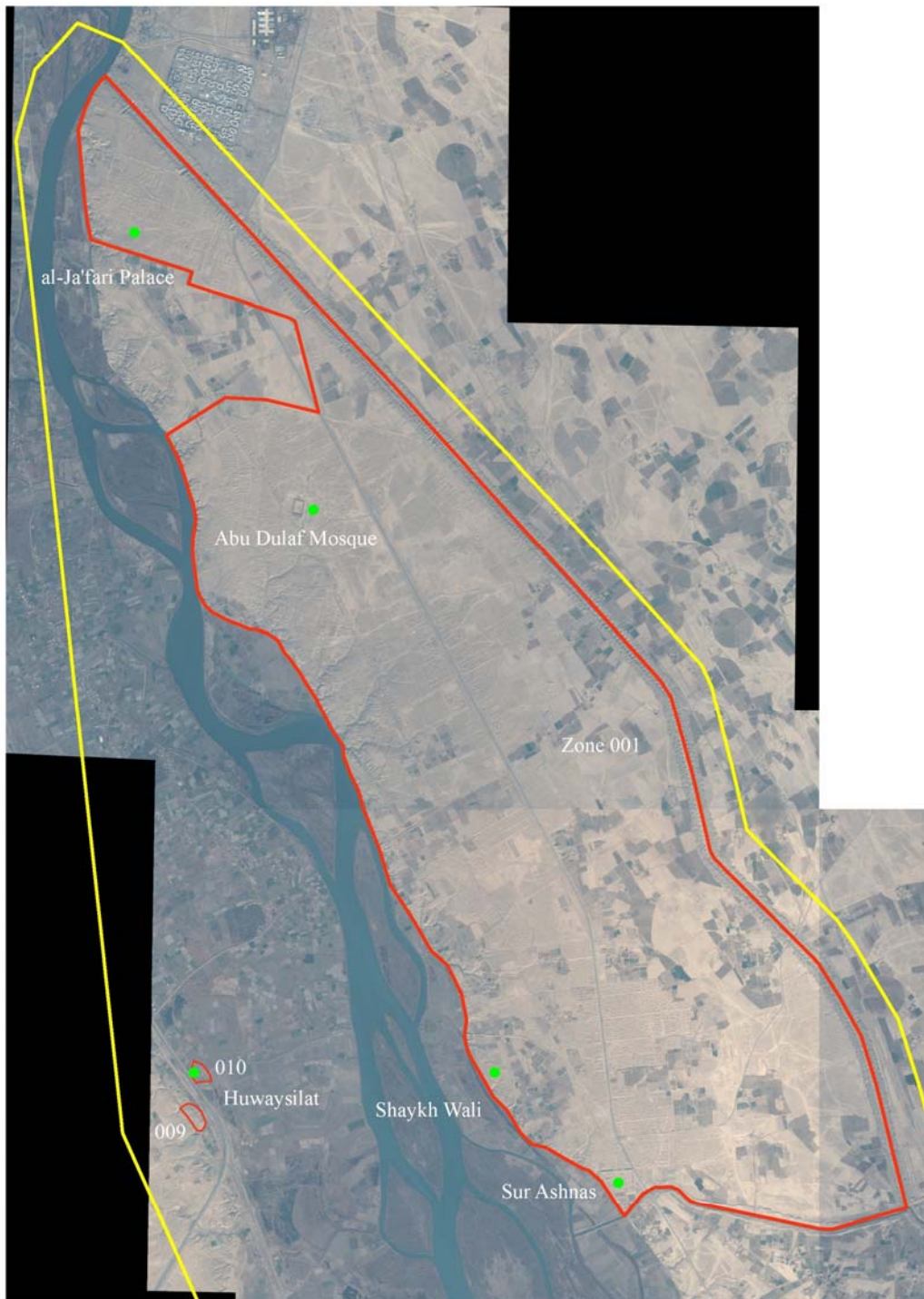
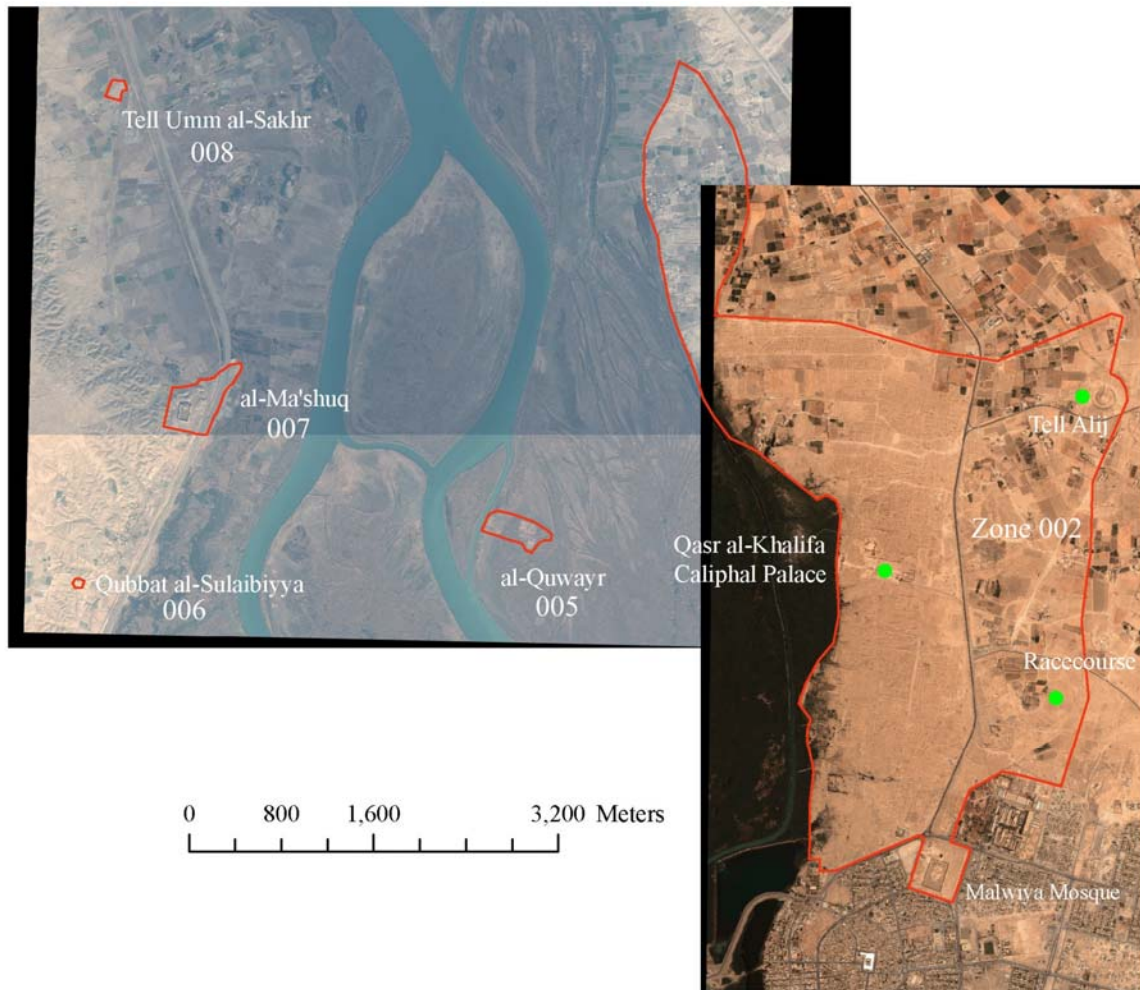


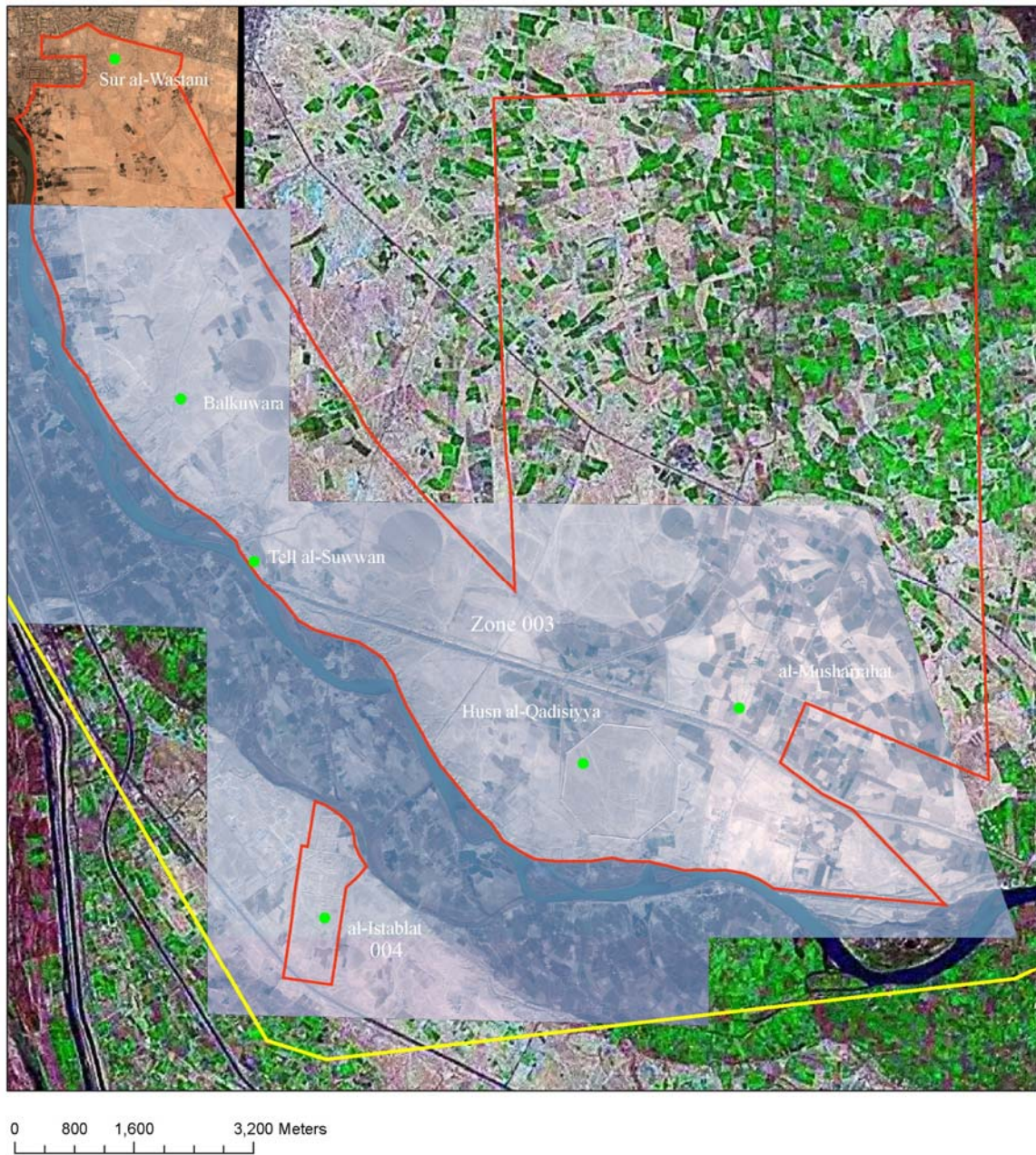
(Figure # 1) Map showing boundaries and buffer zone of Samarra Archaeological City



(Figure # 8) Map showing the location of the main monuments and archaeological elements in the northern part of the proposed protected area



(Figure # 9) Map showing the location of the main monuments and archaeological elements in the central part of the proposed protected area



(Figure # 10) Map showing the location of the main monuments and archaeological elements in the southern part of the proposed protected area

1-f Area of nominated property (ha) and proposed buffer zone (ha)

Area of nominated Property	:	150581480.17m ² =15058 hectares
Buffer Zone	:	314140453.2 m ² =31414 hectares
Total	:	464721933.38 m ² =45472 hectares