

158°E

158°30'E

159°E

159°30'E

S O U T H E R N  
O C E A N

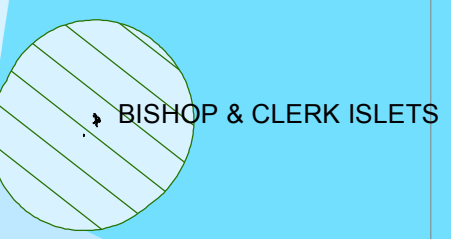
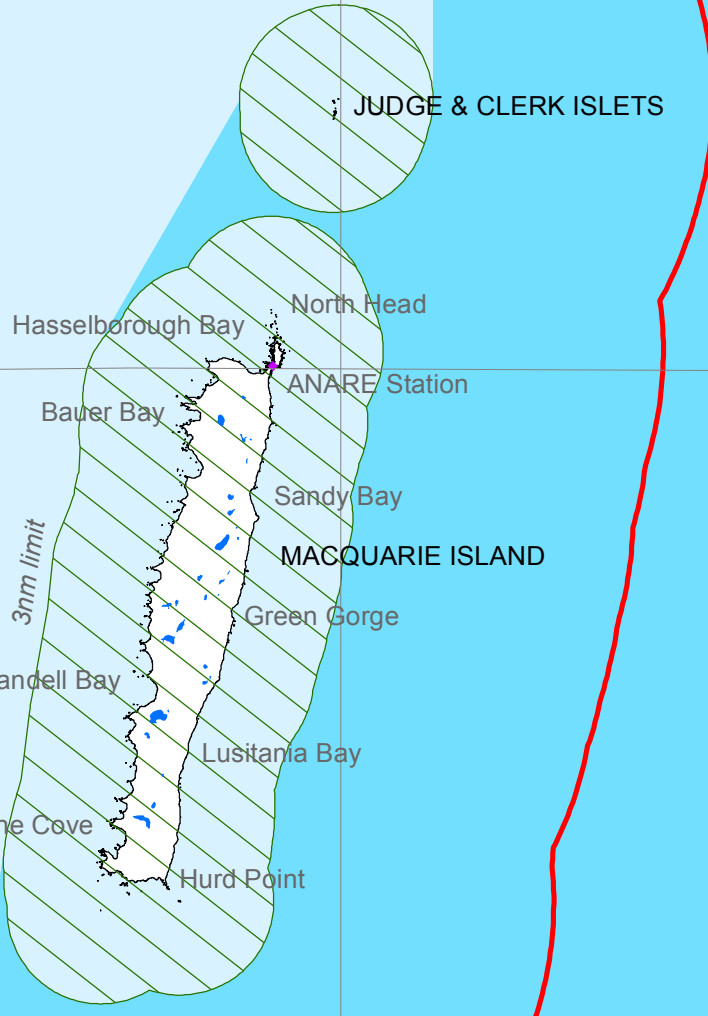
54°30'S

54°30'S

55°S

55°S







12nm limit



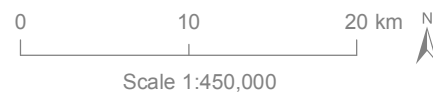
# Macquarie Island

Inscribed on the World Heritage List in 1997

## Legend

-  World Heritage Area Boundary
-  Commonwealth Marine Reserves
-  Highly Protected Zone (IUCN Ia)
-  Species/Habitat Protection Zone South (IUCN IV)
-  Tasmanian Nature Reserve
-  Macquarie Island Nature Reserve (IUCN Ia)

 Lakes



Scale 1:450,000

Data Sources : © Commonwealth of Australia,  
World Heritage Areas.  
Projection : WGS 1984 UTM Zone 57S  
Datum : Geocentric Datum of Australia 1994  
Date : January 2012

