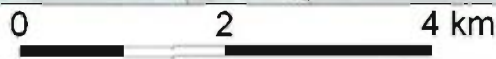
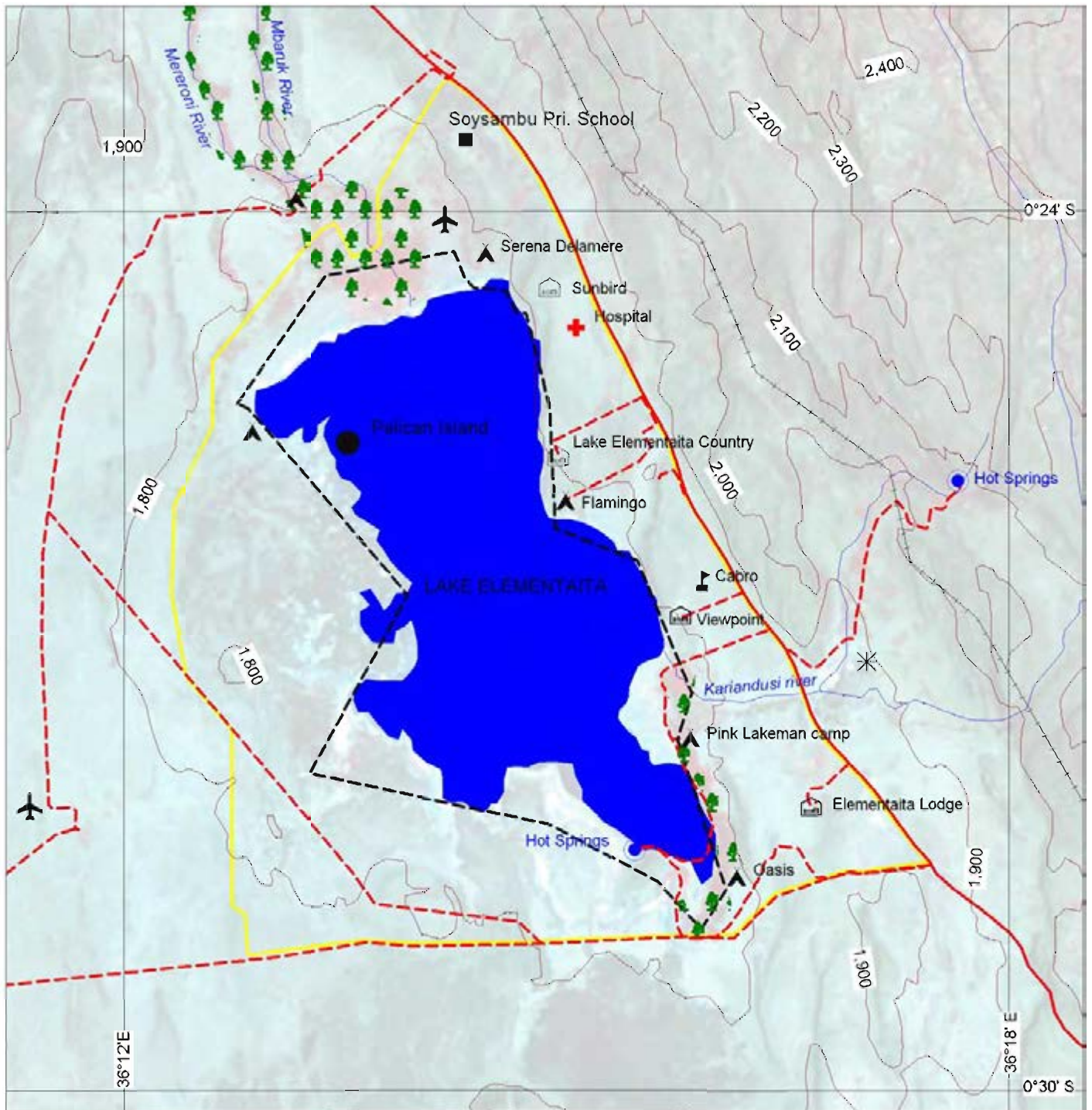


Coordinate system: Geographical
Datum: Arc 1960

Map by: Dennis Milewa (NMK)
Peter Hongo (KWS)



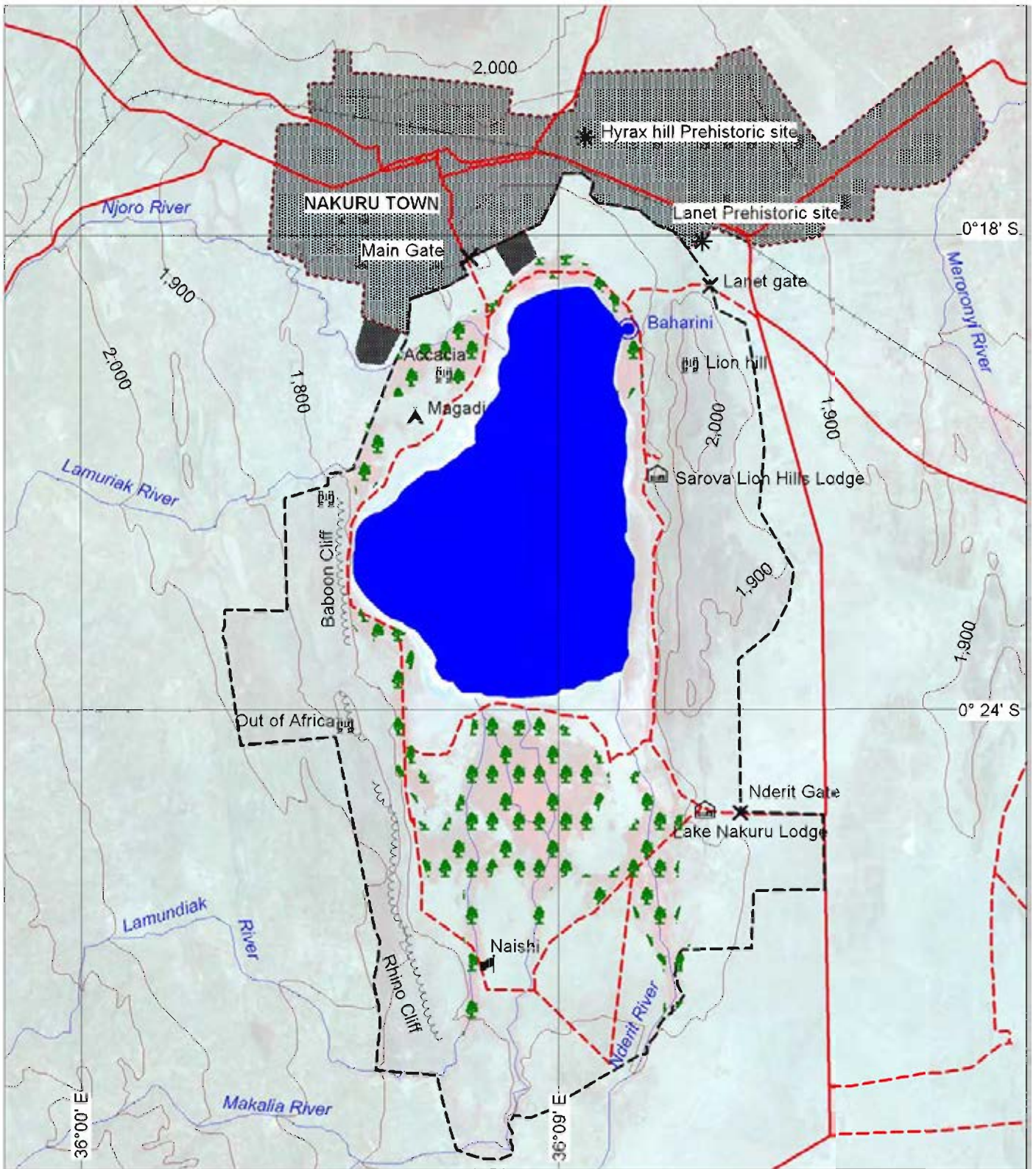
LEGEND

- | | | | |
|--|----------------------------------|--|----------------------|
| | Spring | | Camp site |
| | View Point | | Lodge/ Hotel |
| | Motorable track | | Gate |
| | Main Road | | Cliff |
| | Railway Line | | Prehistoric site |
| | Proposed Property Boundary | | Air strip |
| | Buffer zone Boundary | | Pole treatment plant |
| | Contour (100m vertical interval) | | Accacia Forest |



Coordinate system: UTM
 Zone: 37 Southern Hemisphere
 Datum: Arc 1960
 Sources:
 Survey of Kenya Topo Maps (1973)
 Landsat Image 2006
 GPS

Map by: Dennis Milewa (NMK)
 Peter Hongo (KWS)

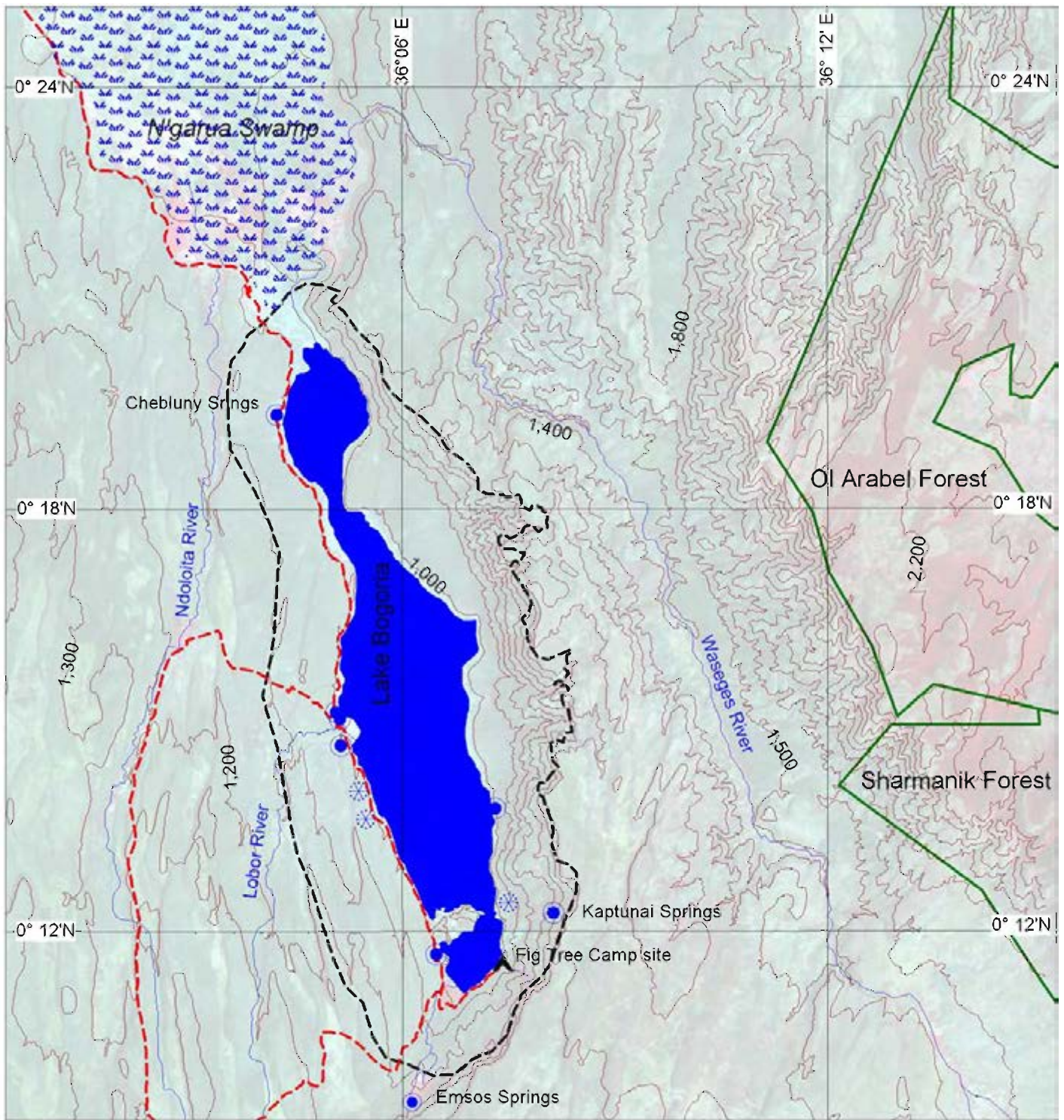


LEGEND









- | | | | |
|--|----------------------------------|--|------------------|
| | Spring | | Camp site |
| | View Point | | Lodge/ Hotel |
| | Motorable track | | Gate |
| | All weather Road | | Cliff |
| | Railway Line | | Prehistoric site |
| | Proposed Property Boundary | | Built Area |
| | Contour (100m vertical interval) | | Accacia Forest |



Coordinate system: UTM
 Zone: 37 Southern Hemisphere
 Datum: Arc 1960
 Sources:
 Survey of Kenya Topo Maps (1973)
 Landsat Image 2006
 GPS
 Map by: Dennis Milewa (NMK)
 Peter Hongo (KWS)



LEGEND

-  Camp site
-  Spring
-  Geyser
-  Motorable track
-  Proposed Property Boundary
-  Gazetted forest Boundary
-  Contour (100m Vertical interval)
-  Swamp

Coordinate system: UTM
 Zone: 37 Northern Hemisphere
 Datum: Arc 1960
 Sources:
 Survey of Kenya Topo Maps (1973)
 Landsat Image 2006
 GPS
 Map by: Dennis Milewa (NMK)
 Peter Hongo (KWS)
 January 2010