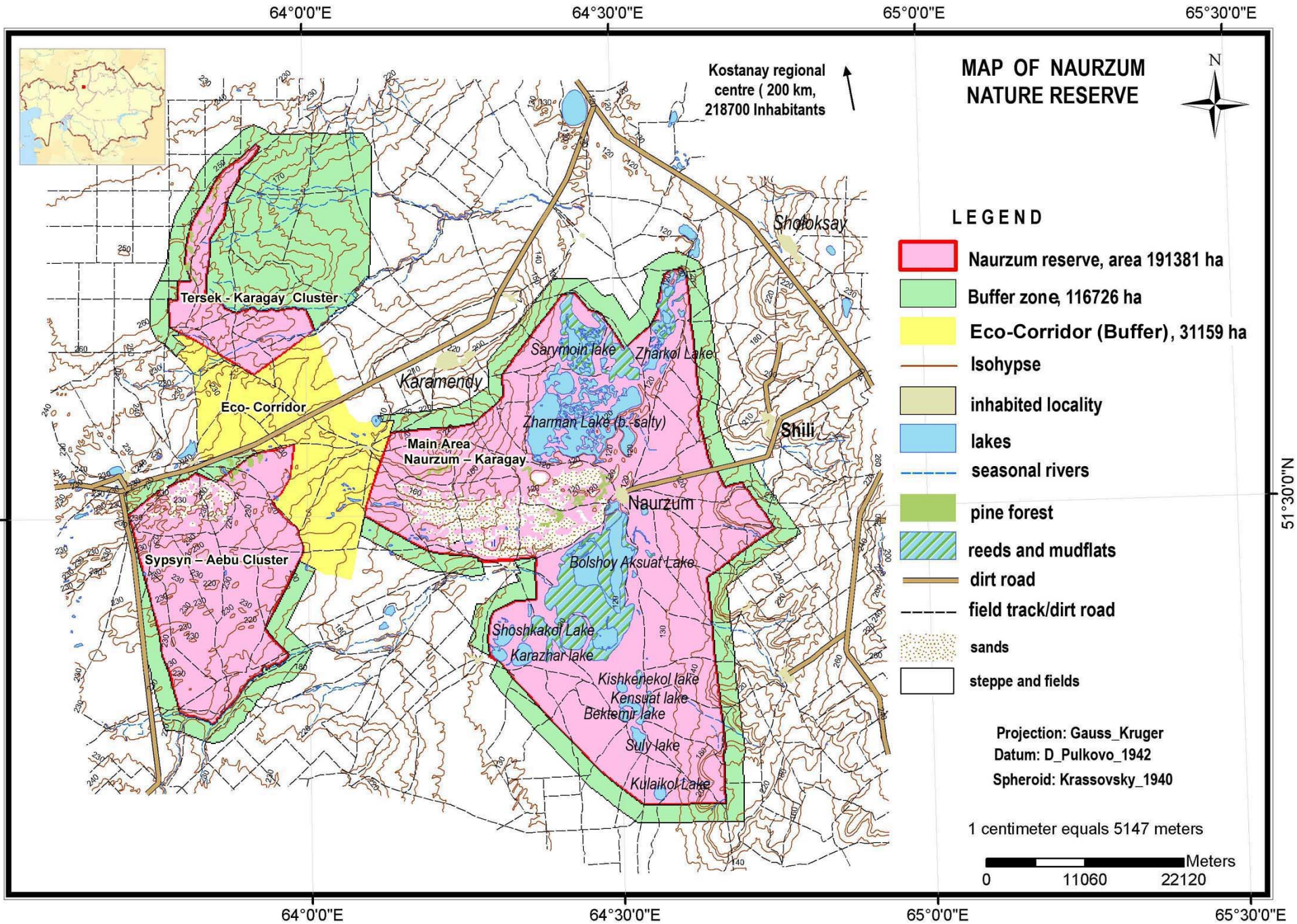


Maps



MAP OF NAURZUM NATURE RESERVE



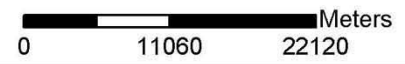
Kostanay regional centre (200 km, 218700 Inhabitants)

LEGEND

- Naurzum reserve, area 191381 ha
- Buffer zone, 116726 ha
- Eco-Corridor (Buffer), 31159 ha
- Isohypse
- inhabited locality
- lakes
- seasonal rivers
- pine forest
- reeds and mudflats
- dirt road
- field track/dirt road
- sands
- steppe and fields

Projection: Gauss_Kruger
 Datum: D_Pulkovo_1942
 Spheroid: Krassovsky_1940

1 centimeter equals 5147 meters



Tersek - Karagay Cluster

Eco-Corridor

Sypsyn - Aebu Cluster

Karamendy

Main Area Naurzum - Karagay

Shoshkakol Lake

Karazhar lake

Kishkenekol lake

Kensuat lake

Bektemir lake

Suly lake

Kulaikol Lake

Sarymoin lake

Zharman Lake (b. salty)

Naurzum

Bolshoy Aksuat Lake

Shoshkakol Lake

Karazhar lake

Kishkenekol lake

Kensuat lake

Bektemir lake

Suly lake

Kulaikol Lake

Sarymoin lake

Zharman Lake (b. salty)

Naurzum

Bolshoy Aksuat Lake

Shoshkakol Lake

Karazhar lake

Kishkenekol lake

Kensuat lake

Bektemir lake

Suly lake

Kulaikol Lake

Shobksay

Shili

64°0'0"E

64°30'0"E

65°0'0"E

65°30'0"E

51°30'0"N

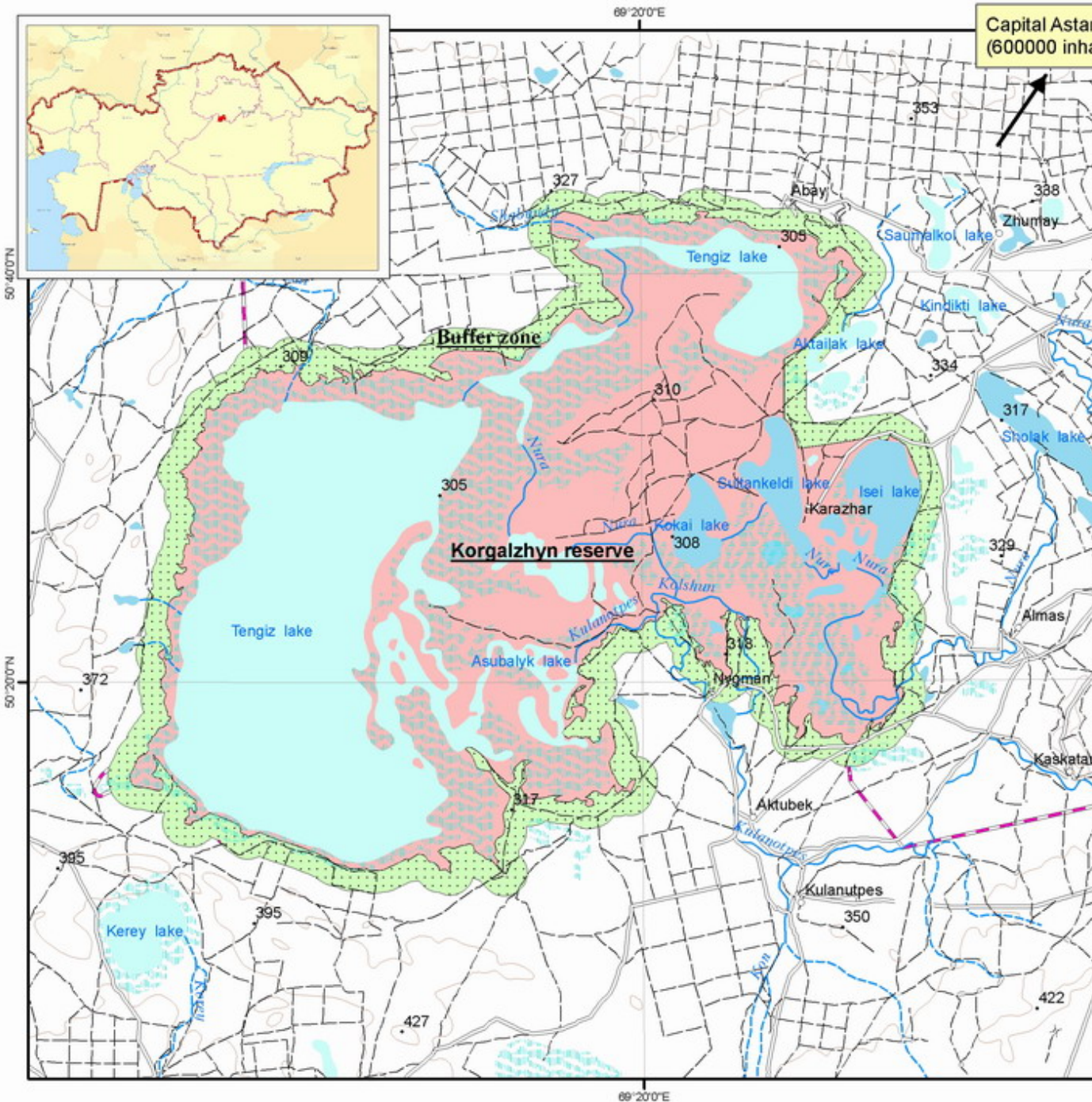
51°30'0"N

64°0'0"E

64°30'0"E

65°0'0"E

65°30'0"E



Capital Astana 120 km.
(600000 inhabitants)



MAP OF KORGALZHYN NATURE RESERVE

Legend

- oblast (district) border
- 338 altitude
- lake**
- river**
- type**
- type**
- sweet
- permanent streams
- saline
- seasonal rivers
- ground**
- swamp
- saline swamp (solontchak)
- steppe, crop fields
- roads**
- type**
- paved road
- field track/dirt roads
- dirt road
- dam
- Nature reserve**
- Korgalzhyn reserve, area 259879 ha
- Buffer zone, area 67528,51 ha

Projection: Gauss_Kruger
 Datum: D_Pulkovo_1942
 Spheroid: Krasovsky_1940
 1 centimeter equals 5 000 meters
 0 10 000 20 000
 Meters