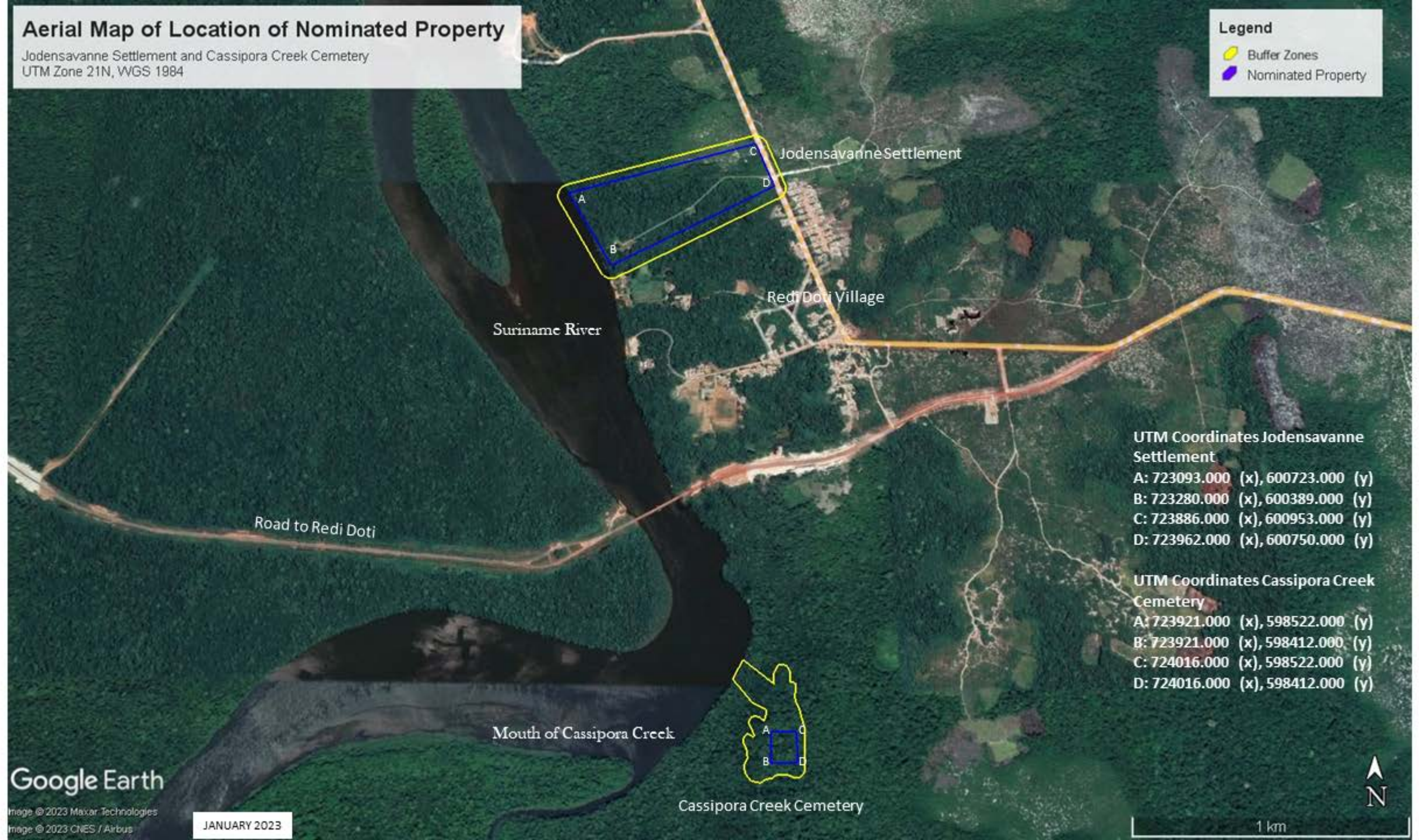


Aerial Map of Location of Nominated Property

Jodensavanne Settlement and Cassipora Creek Cemetery
UTM Zone 21N, WGS 1984

Legend

- Buffer Zones
- Nominated Property



UTM Coordinates Jodensavanne Settlement

A:	723093.000 (x),	600723.000 (y)
B:	723280.000 (x),	600389.000 (y)
C:	723886.000 (x),	600953.000 (y)
D:	723962.000 (x),	600750.000 (y)

UTM Coordinates Cassipora Creek Cemetery

A:	723921.000 (x),	598522.000 (y)
B:	723921.000 (x),	598412.000 (y)
C:	724016.000 (x),	598522.000 (y)
D:	724016.000 (x),	598412.000 (y)

Google Earth

Image © 2023 Maxar Technologies
Image © 2023 CNES / Airbus

JANUARY 2023





1 km

Cassipora Creek Cemetery

Heritage Remains and Natural Features of Nominated Property

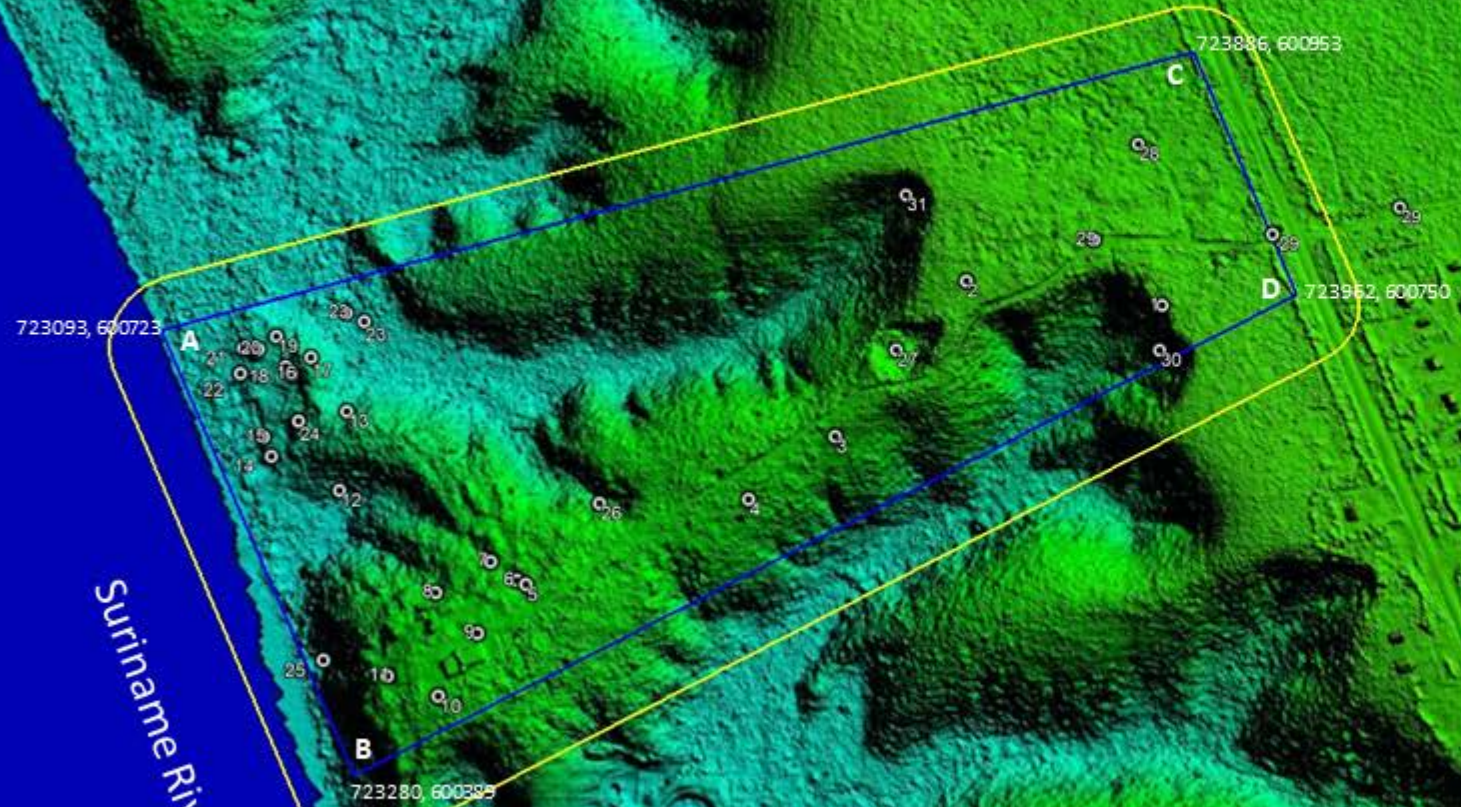
Jodensavanne Settlement
UTM Zone 21N, WGS 1984

Legend

-  Buffer Zone (11.8 ha)
-  Nominated Property (23.8 ha)

Key for Heritage Features

1. Medicinal Spring
2. African-Creole Cemetery
3. Jodensavanne Beth Haim
4. Remnants Rodiamento House
5. Remnant brick foundation of house
6. Remnant brick foundation of kitchen
7. Remnant brick foundation of house
8. Remnant brick foundation House de Meza
9. Ruin Beraha VeSalom Synagogue
10. Remnant brick foundation of house
11. Remnant brick foundation Chief Rabbi's House
12. Inlet for boats
13. Remnant brick foundation of house
14. Inlet for boats
15. Inlet for boats
16. Remnant brick foundation of house
17. Possible Mikve
18. Remnant brick foundation of house
19. Remnant brick foundation of house
20. Remnant brick foundation of house at Celba Tree
21. Celba Tree
22. Inlet for boats
23. Post Creek
24. Military Repository
25. Nassy's Landing (Dock)
26. Celba Tree
27. Sand Pit
28. Wijngaarde Cemetery
29. Cordon Path
30. Water Spring
31. Water Spring



Google Earth

Image © 2023 Maxar Technologies
Image © 2023 CNES / Airbus

JANUARY 2023

300 m



LiDAR Image of Nominated Property

Cassipora Creek Cemetery and Buffer Zone
UTM Zone 21N, WGS 1984

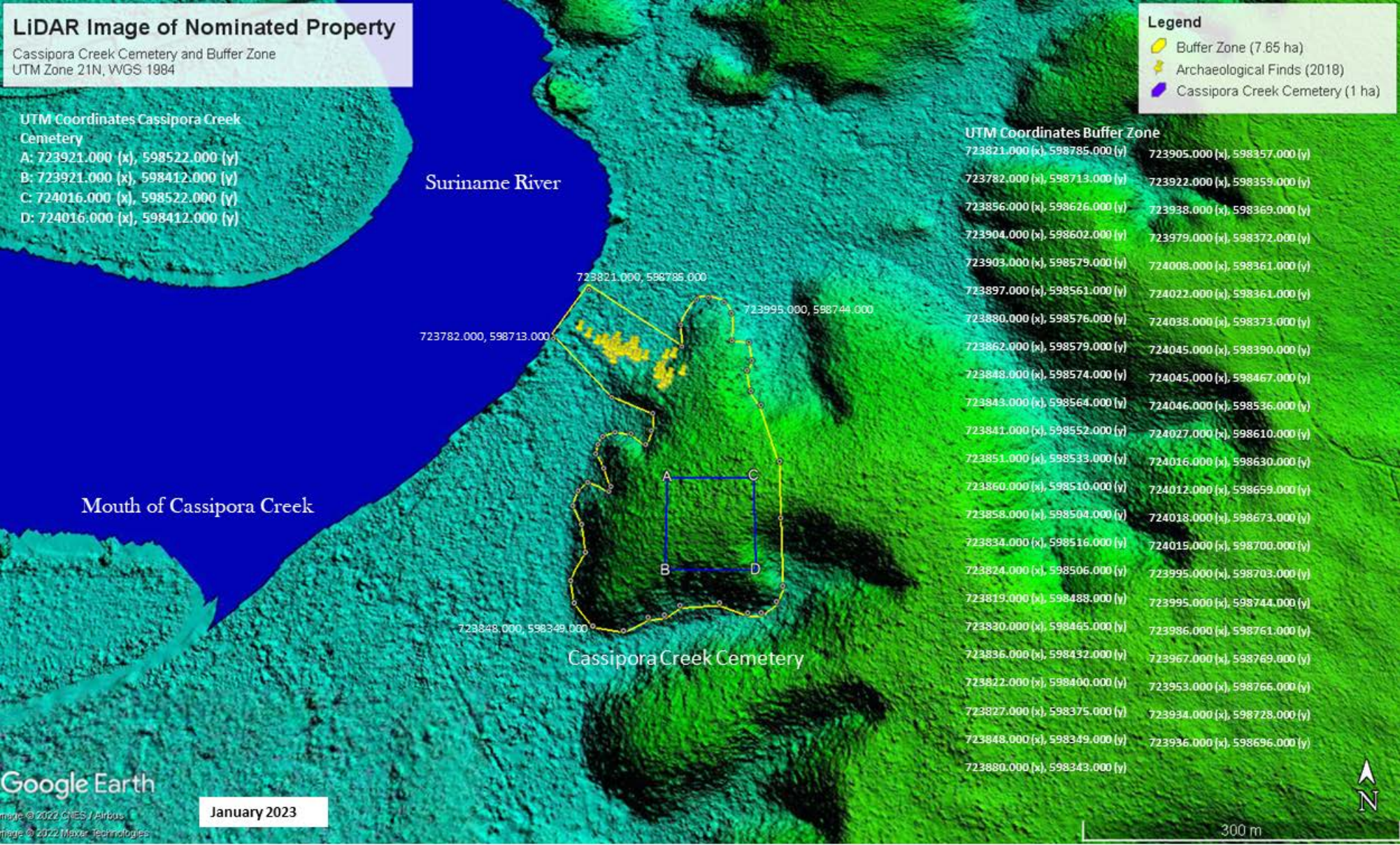
Legend

- Buffer Zone (7.85 ha)
- Archaeological Finds (2018)
- Cassipora Creek Cemetery (1 ha)

UTM Coordinates Cassipora Creek Cemetery
A: 723921.000 (x), 598522.000 (y)
B: 723921.000 (x), 598412.000 (y)
C: 724016.000 (x), 598522.000 (y)
D: 724016.000 (x), 598412.000 (y)

UTM Coordinates Buffer Zone

723821.000 (x), 598785.000 (y)	723905.000 (x), 598357.000 (y)
723782.000 (x), 598713.000 (y)	723922.000 (x), 598359.000 (y)
723856.000 (x), 598626.000 (y)	723938.000 (x), 598369.000 (y)
723904.000 (x), 598602.000 (y)	723979.000 (x), 598372.000 (y)
723903.000 (x), 598579.000 (y)	724008.000 (x), 598361.000 (y)
723897.000 (x), 598561.000 (y)	724022.000 (x), 598361.000 (y)
723880.000 (x), 598576.000 (y)	724038.000 (x), 598373.000 (y)
723862.000 (x), 598579.000 (y)	724045.000 (x), 598390.000 (y)
723848.000 (x), 598574.000 (y)	724045.000 (x), 598467.000 (y)
723843.000 (x), 598564.000 (y)	724046.000 (x), 598536.000 (y)
723841.000 (x), 598552.000 (y)	724027.000 (x), 598610.000 (y)
723851.000 (x), 598533.000 (y)	724016.000 (x), 598630.000 (y)
723860.000 (x), 598510.000 (y)	724012.000 (x), 598659.000 (y)
723858.000 (x), 598504.000 (y)	724018.000 (x), 598673.000 (y)
723834.000 (x), 598516.000 (y)	724015.000 (x), 598700.000 (y)
723824.000 (x), 598506.000 (y)	723995.000 (x), 598703.000 (y)
723819.000 (x), 598488.000 (y)	723995.000 (x), 598744.000 (y)
723830.000 (x), 598465.000 (y)	723986.000 (x), 598761.000 (y)
723836.000 (x), 598432.000 (y)	723967.000 (x), 598769.000 (y)
723822.000 (x), 598400.000 (y)	723953.000 (x), 598766.000 (y)
723827.000 (x), 598375.000 (y)	723934.000 (x), 598728.000 (y)
723848.000 (x), 598349.000 (y)	723936.000 (x), 598696.000 (y)
723880.000 (x), 598343.000 (y)	



Google Earth

January 2023

Image © 2022 CNES / Airbus
Image © 2022 Maxar Technologies

300 m

