


 Boundary of the World Heritage Property

 Official Typical Zone
Proposal for a new buffer zone





Servicio Nacional del Patrimonio Cultural
MINISTERIO DE LAS CULTURAS, LAS ARTES Y EL PATRIMONIO
LEY N° 17.288
CMN COMISIÓN NACIONAL DE MONUMENTOS Y PATRIMONIO

MINOR MODIFICATIONS TO THE BOUNDARIES OF WORLD HERITAGE PROPERTIES

CHURCHES OF CHILOÉ (C971 - 005)
NUESTRA SEÑORA DE GRACIA DE NERCÓN CHURCH

REGION	DE LOS LAGOS
PROVINCE	CHILOÉ
COMMUNE	CASTRO
UBICATION	4 KILOMETERS SOUTH OF CASTRO

- LEGENDE
-  Zona Típica Oficial
Official Typical Zone
Propuesta para Zona de Amortiguamiento del Sitio de Patrimonio Mundial
Proposal for a new buffer zone
 -  Cartografía actualizada del área de protección
Updated cartography of the protection area.

 Contours

MAP BASE
Satellite Image Google Earth - Postulation UNESCO 2017

DEVELOPED BY
Yasna Guzmán - Designer

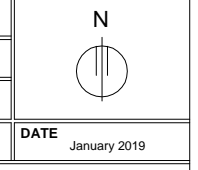
CARTOGRAPHER
Roberto Pérez de Arce

REVISED BY
Mirja Diaz Santibáñez - Architect

APPROXIMATE AREA SPM
0,42 Hectares

APPROXIMATE AREA ZA
59,80 Hectares

SCALE
Graphic



DATE
January 2019

CONTENT
Boundary of the World Heritage Property - Official Typical Zone / Proposal for a new Buffer Zone

PAGE
5 - 5

COORDINATES
Geográficas DATUM WGS 84

