

Republic of Iraq

Samarra

Archaeological City



Nomination for inscription on the World Heritage List
Album of Plans

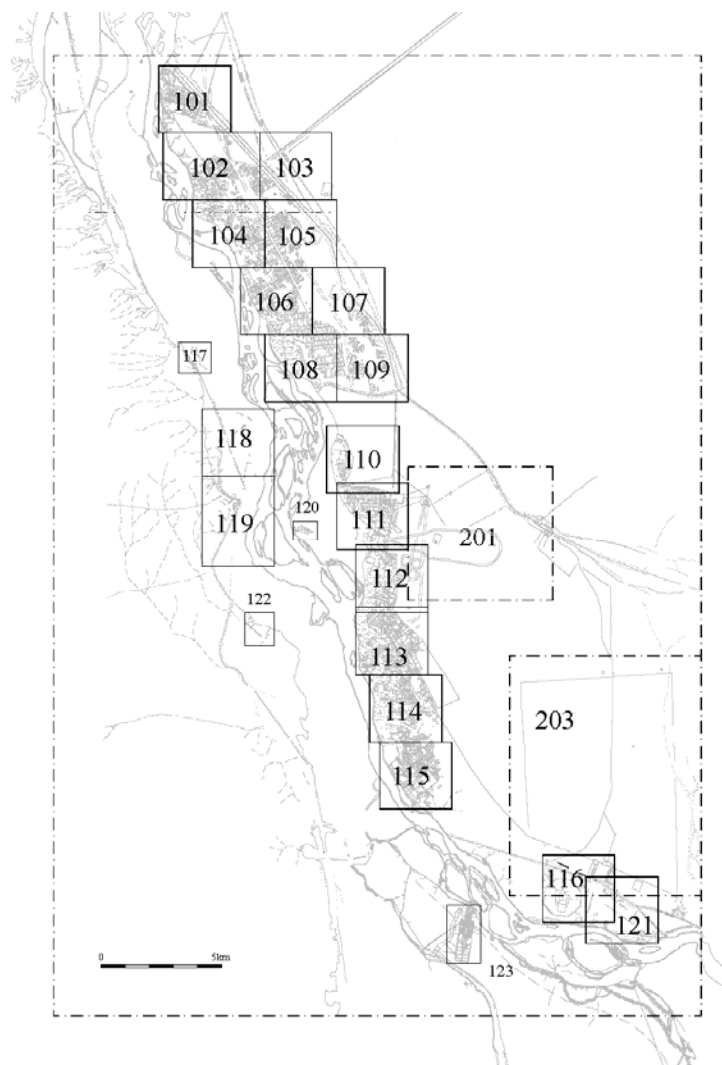


Figure 1 Key to location of map sheets

LEGEND OF PLANS

Limit of Core Zone is marked in red

Limit of Buffer Zone is marked in yellow

Roads are marked in brown

The coordinates are Universal Transverse Mercator Zone 38 North

CREDITS

The satellite imagery partly includes material (C) COPYRIGHT 2004, 2005, 2006 DigitalGlobe, Inc. ALL RIGHTS RESERVED. These images are dated July 2004, January 2005, and March 2006, with a resolution of approximately 60 cm. The remaining imagery is Landsat Enhanced Thematic Mapper, copyright NASA, dated approximately 2000, with a resolution of approximately 15 m.

The overlay maps are created by the Samarra Archaeological Survey, dir. A. Northedge.

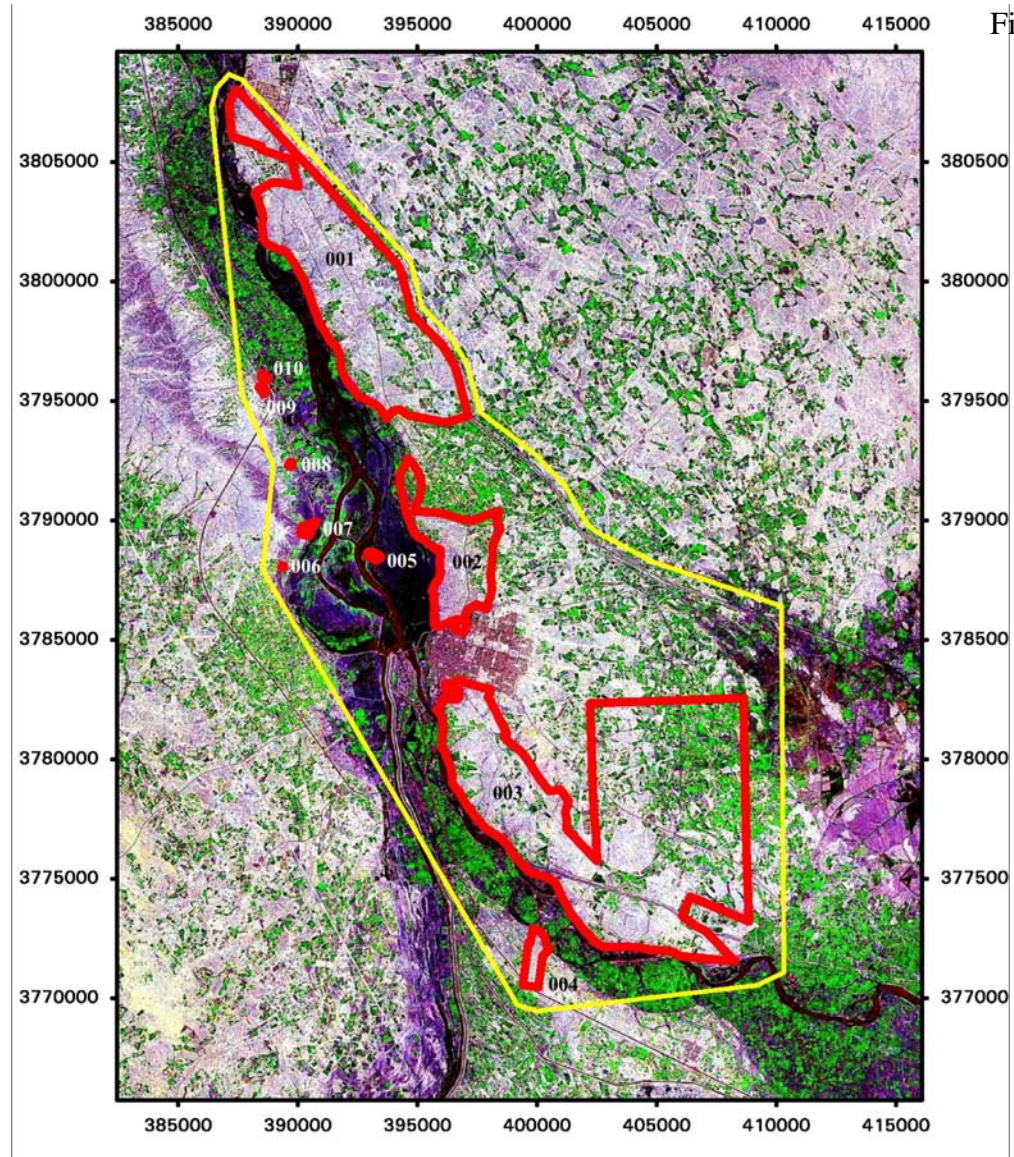


Figure 2 Overall layout of proposed core and buffer zones

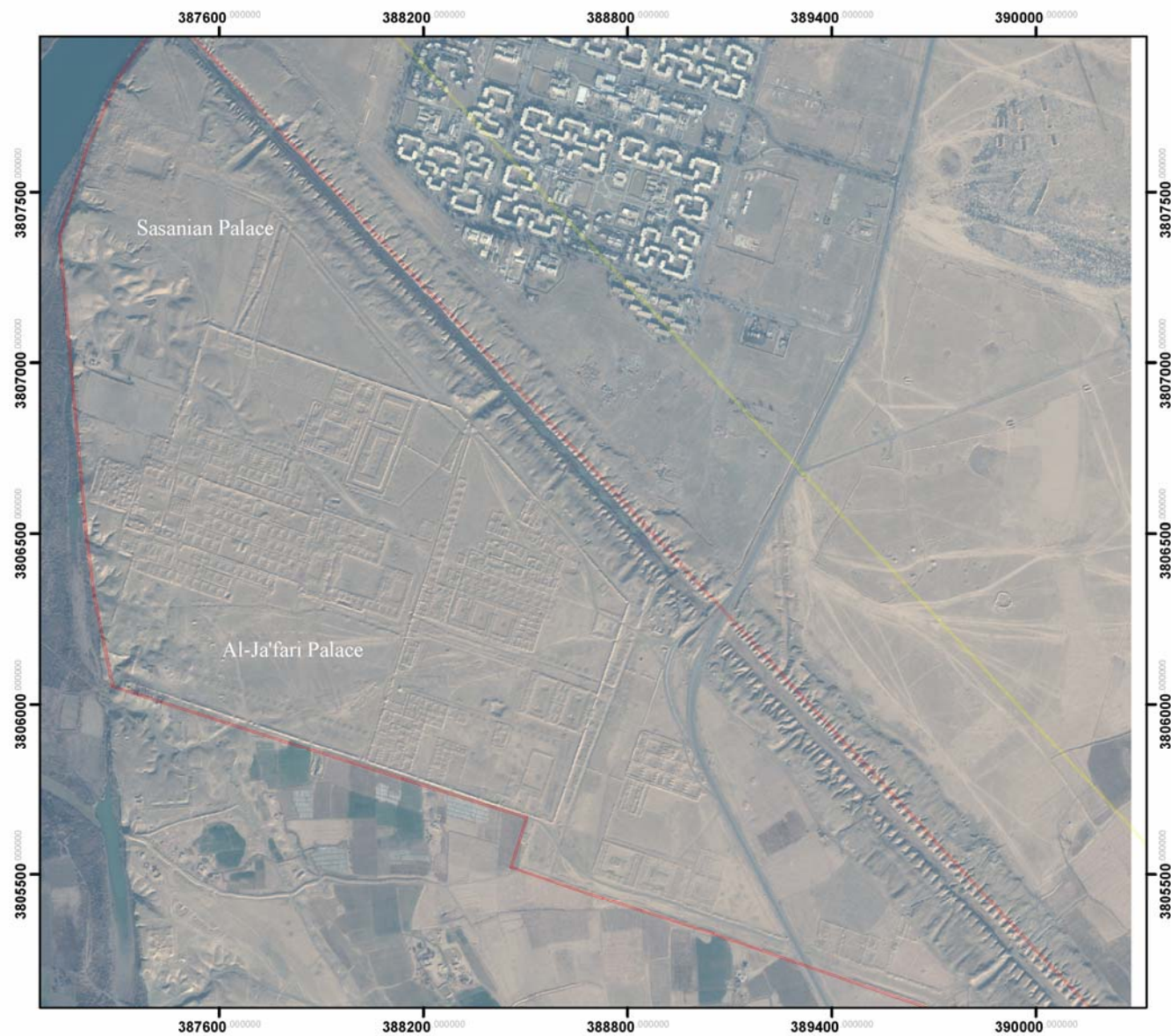


Figure 3 Sheet 101 al-Ja'fari

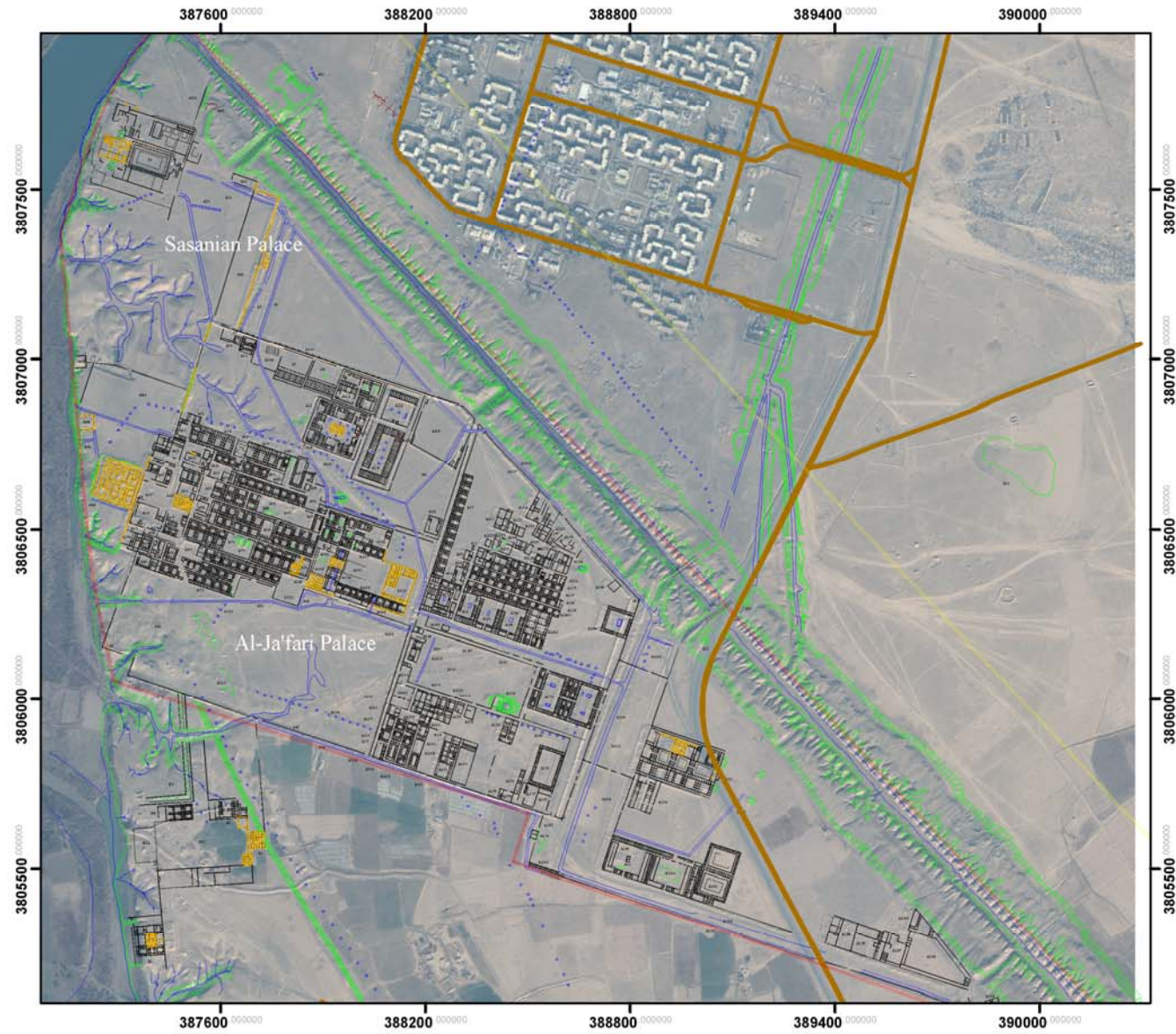


Figure 4 Sheet 101 al-Ja'fari with archaeological plan overlay

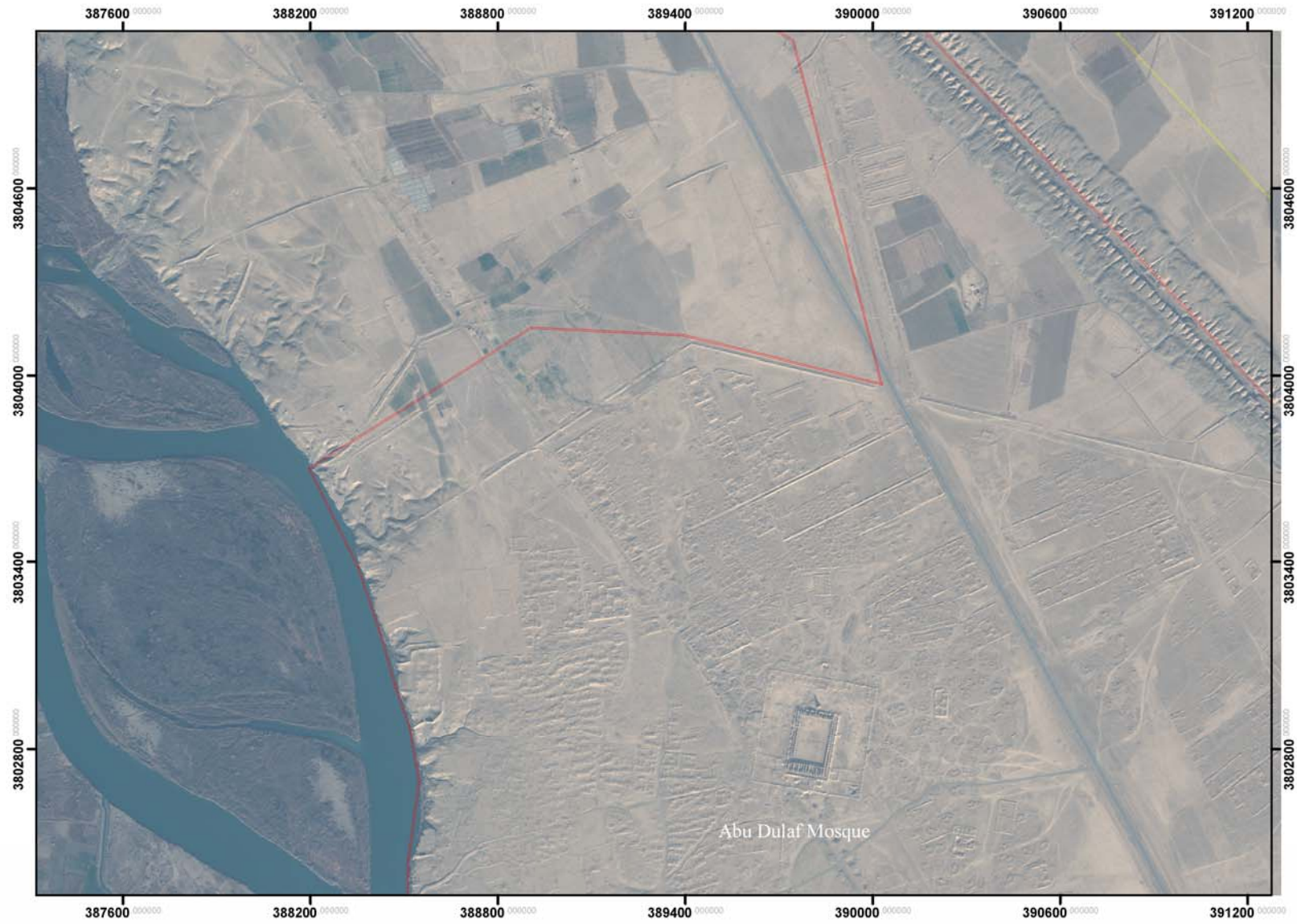


Figure 5 Sheet 102 Abu Dulaf

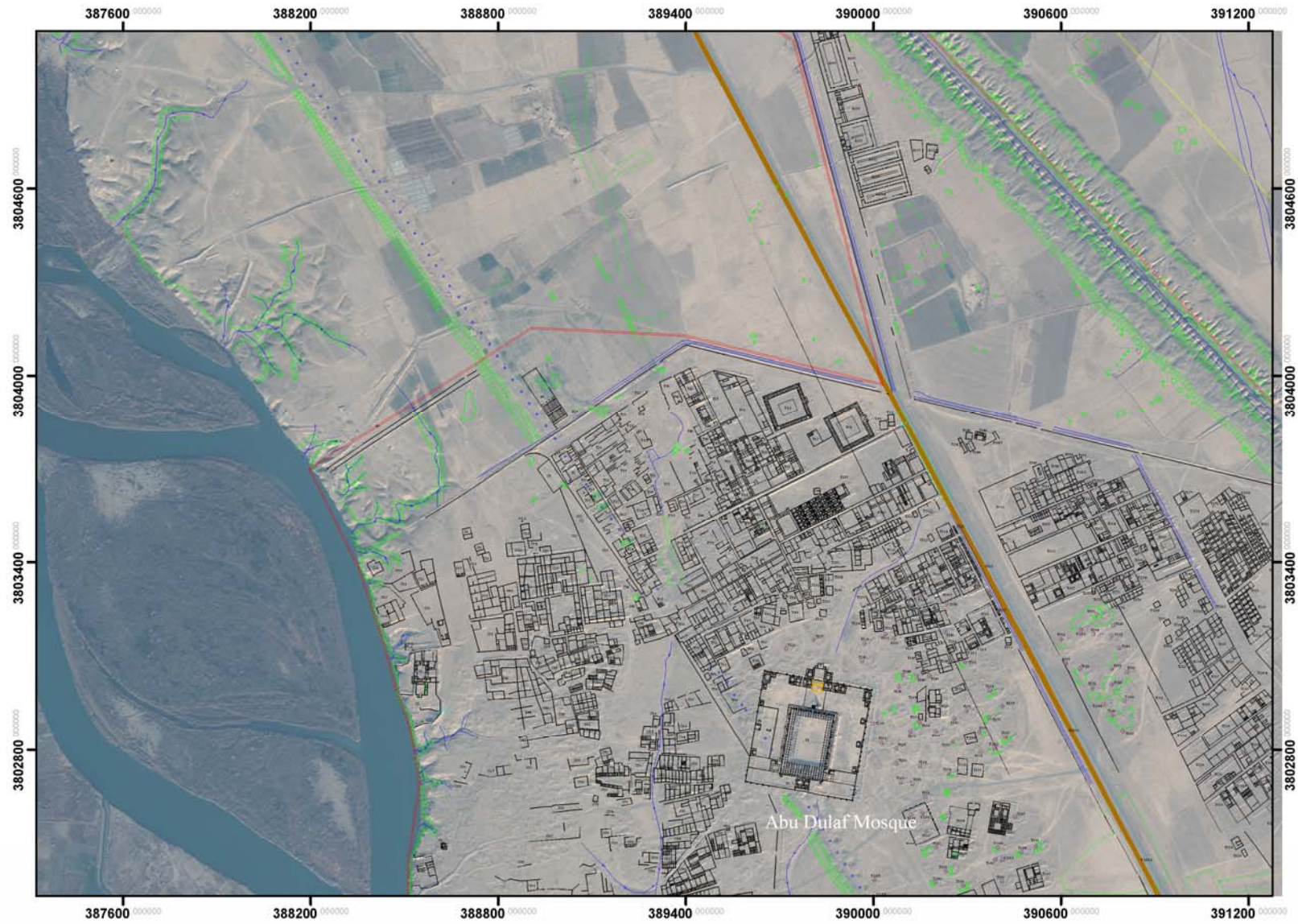


Figure 6 Sheet 102 Abu Dulaf with archaeological plan overlay

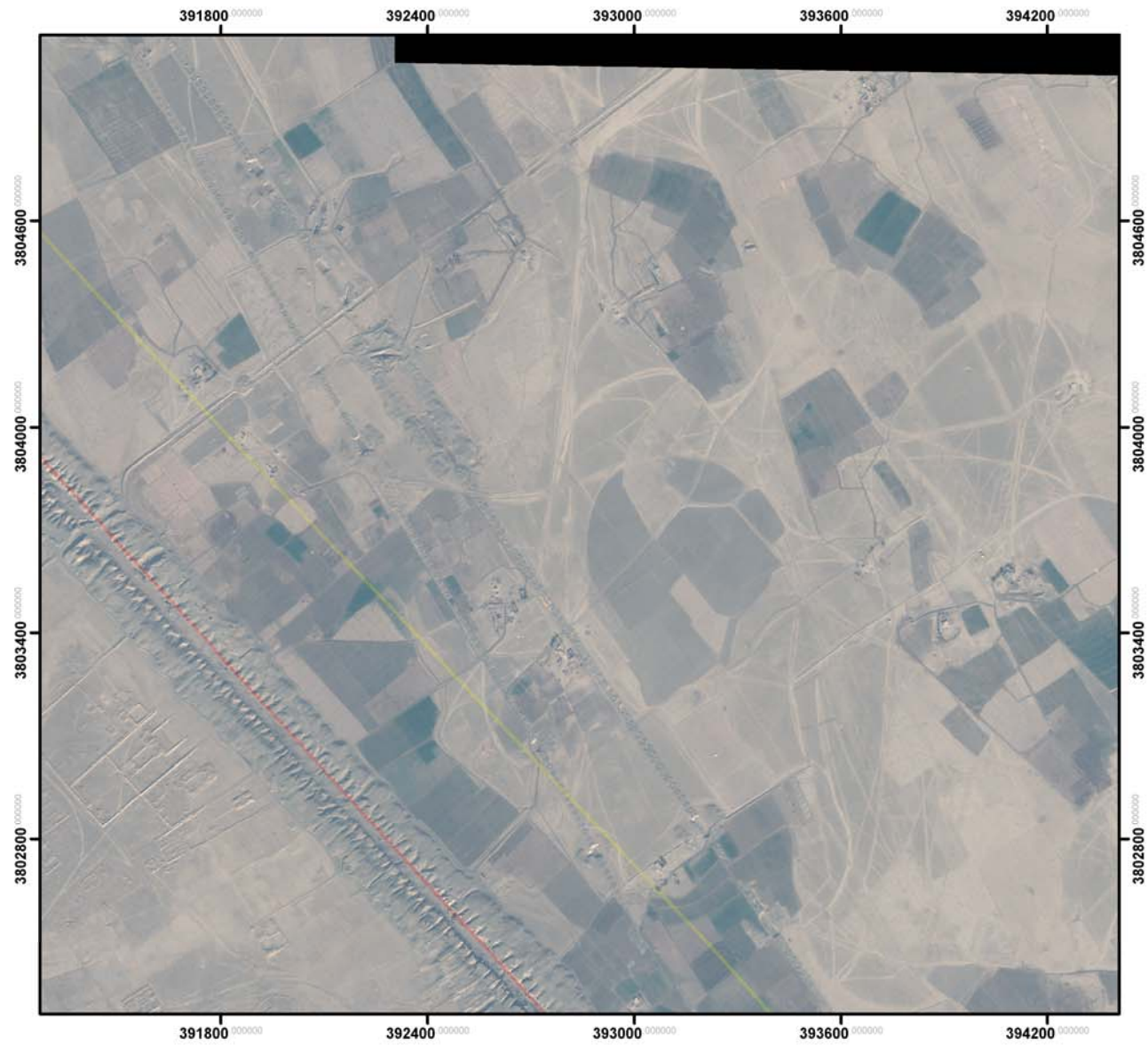


Figure 7 Sheet 103 Abu Dulaf East

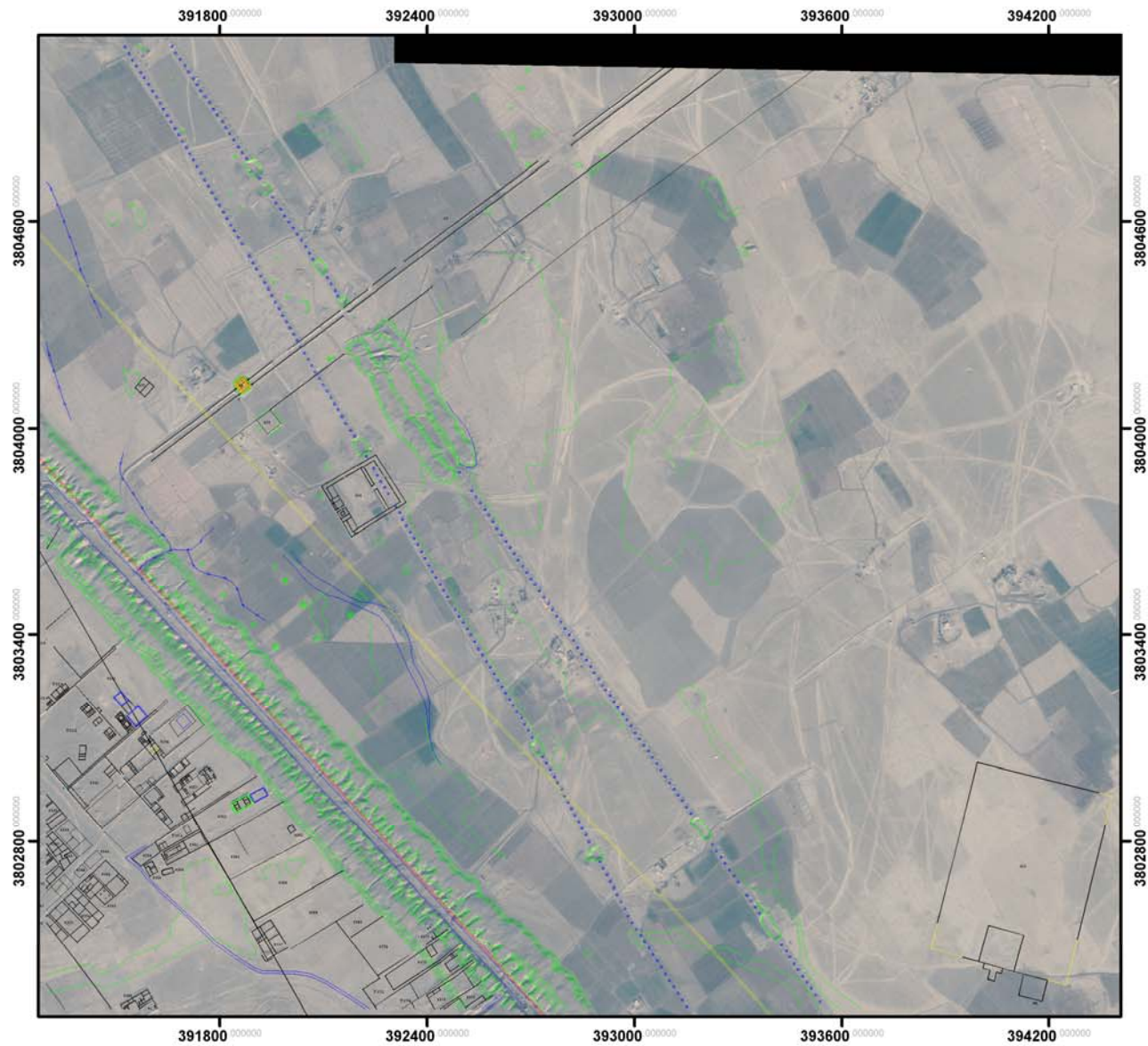


Figure 8 Sheet 103 Abu Dulaf East with archaeological plan overlay

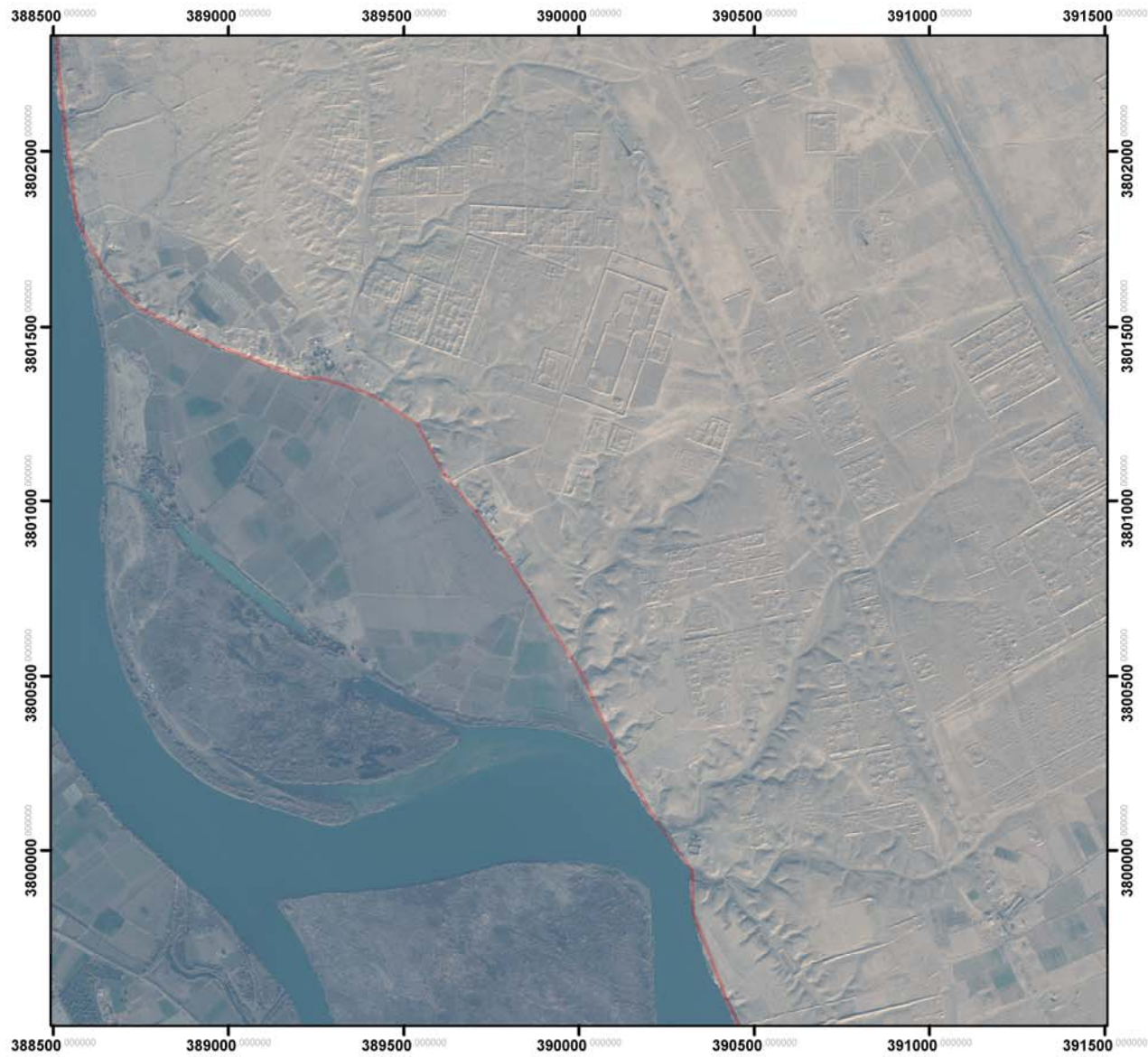


Figure 9 Sheet 104 al-Mutawakkiliyya West

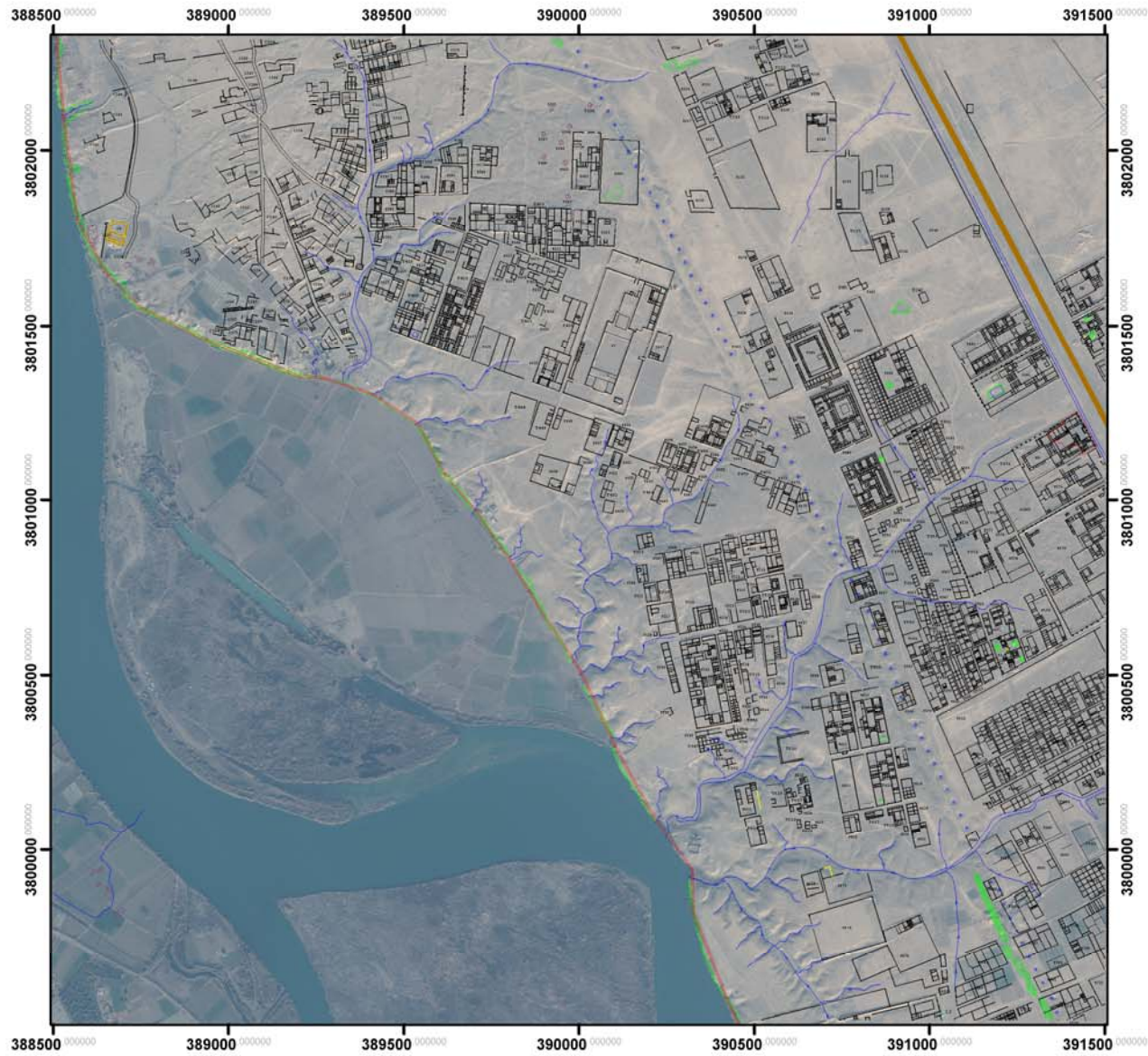


Figure 10 Sheet 104 al-Mutawakkiliyya West with archaeological plan overlay

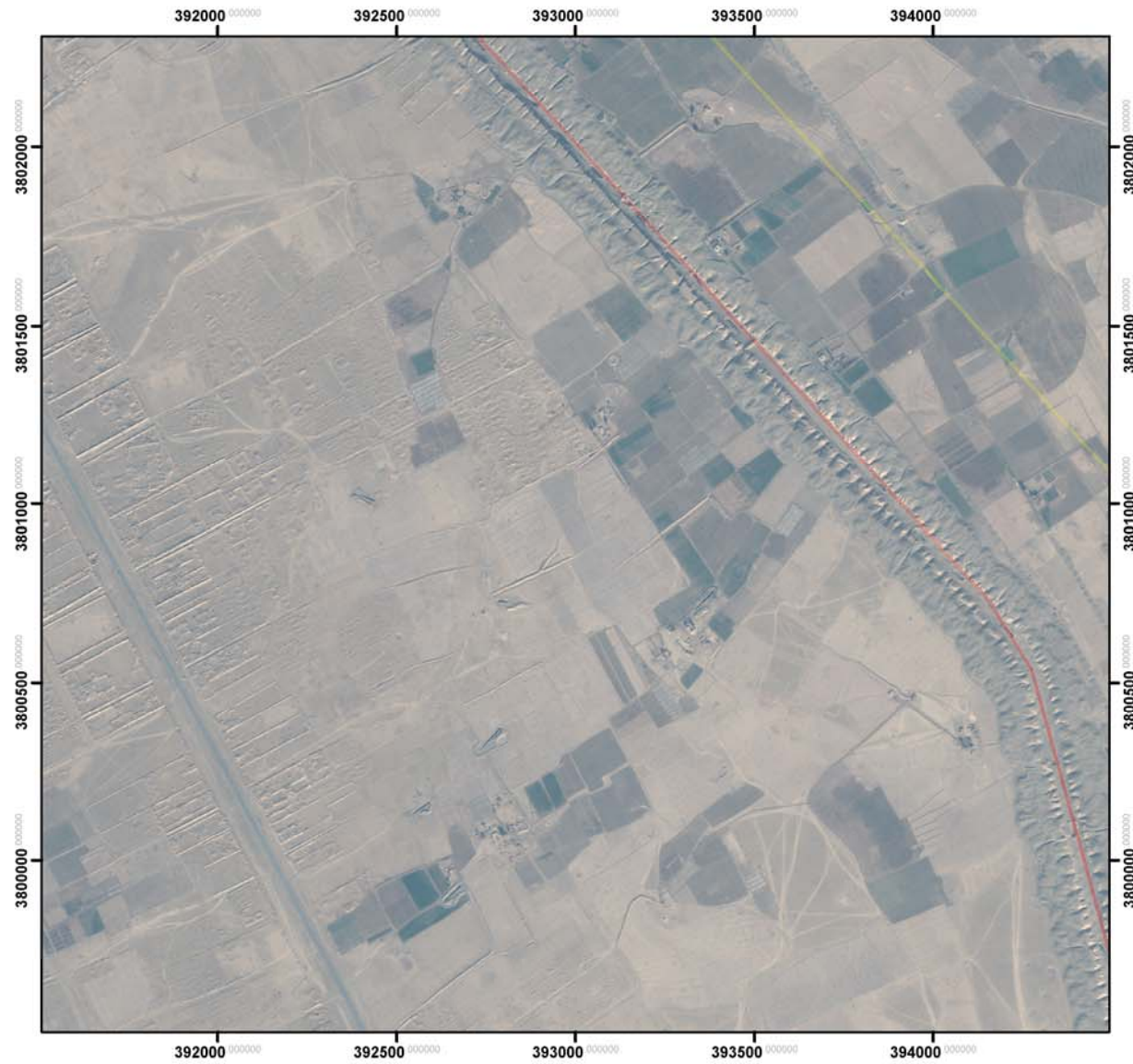


Figure 11 Sheet 105 al-Mutawakkiliyya East

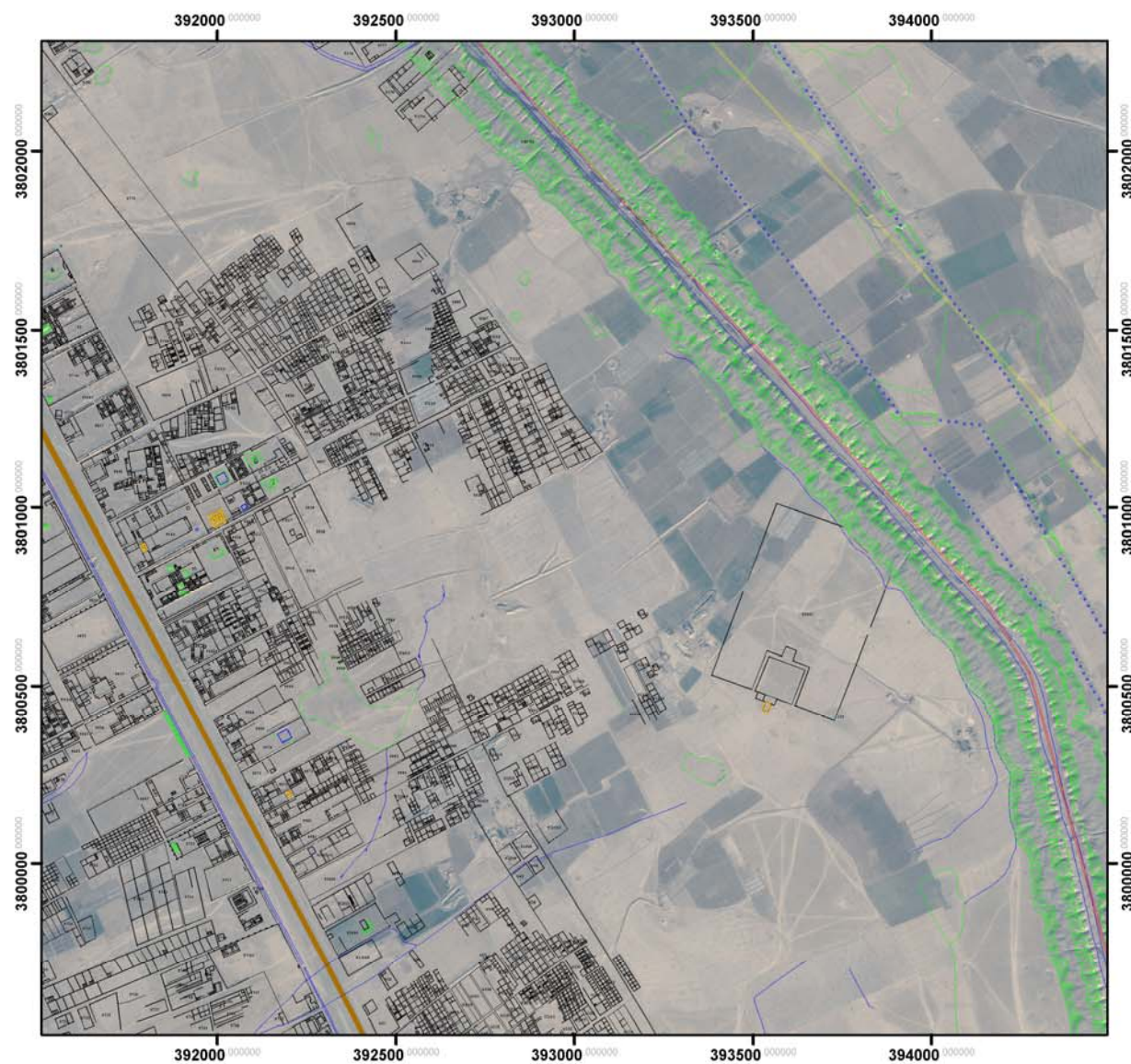


Figure 12 Sheet 105 al-Mutawakkiliyya East with archaeological plan overlay

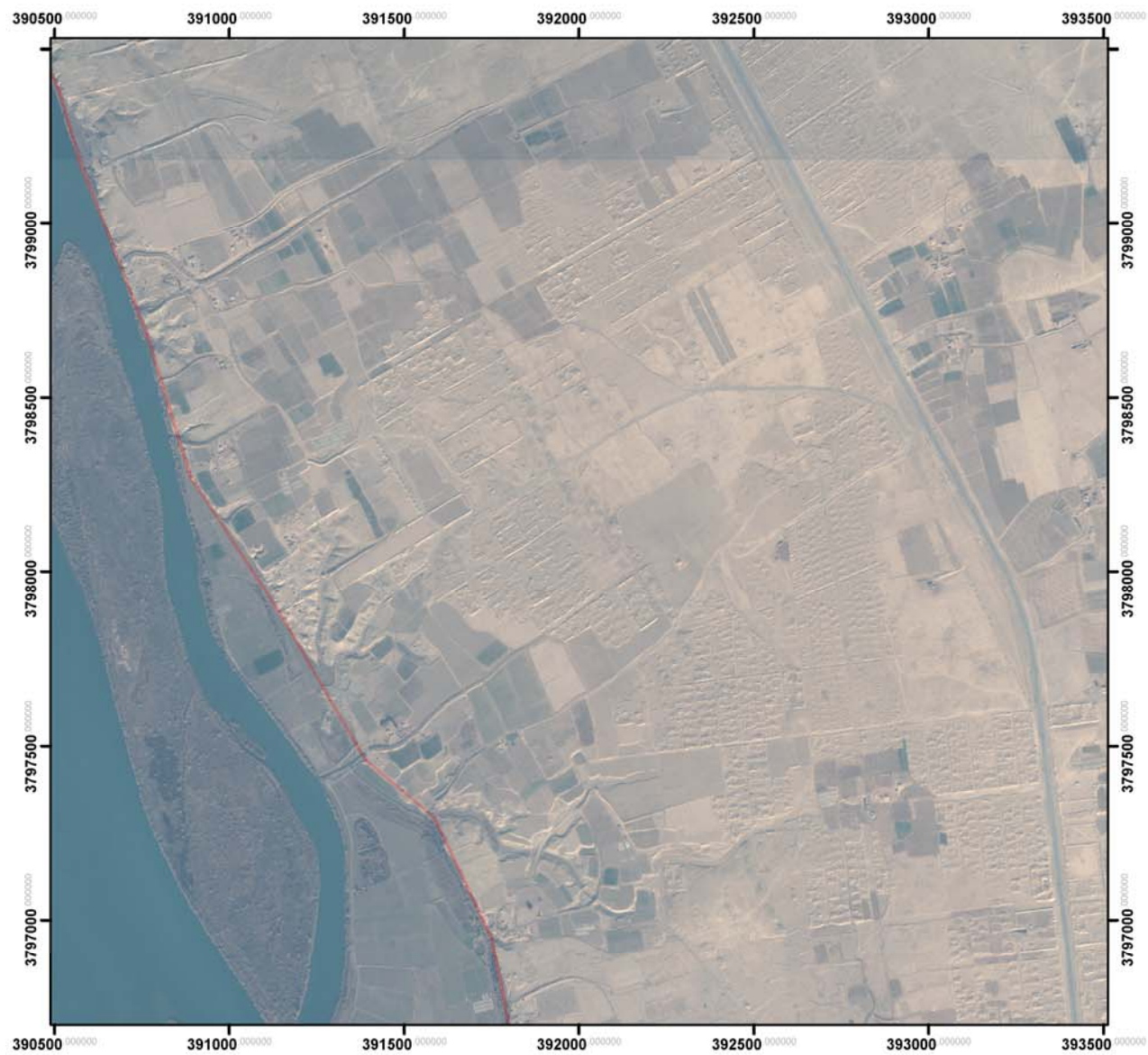


Figure 13 Sheet 106 al-Zanqur

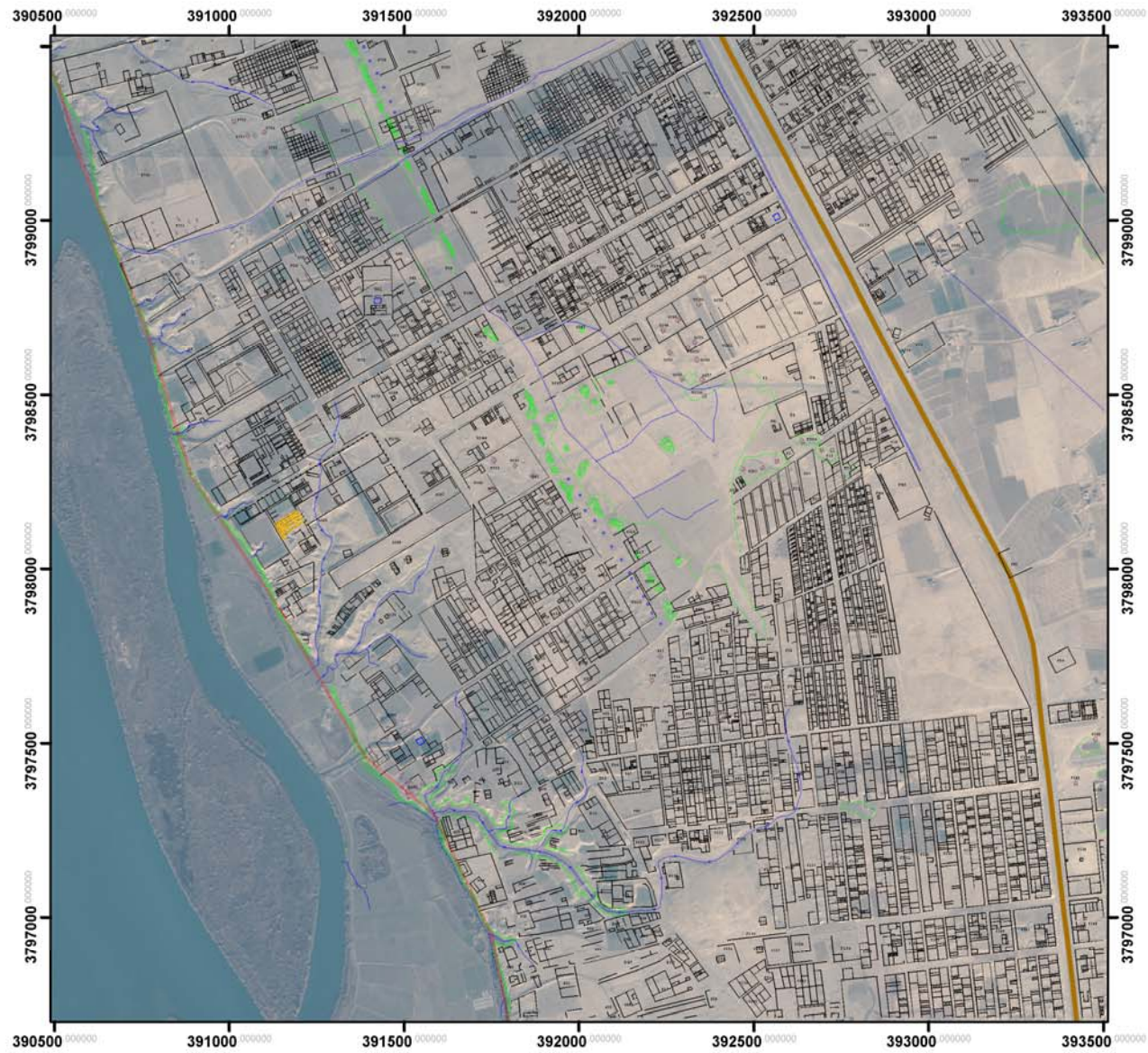


Figure 14 Sheet 106 al-Zanqur with archaeological plan overlay



Figure 15 Sheet 107 Ashnas Northeast

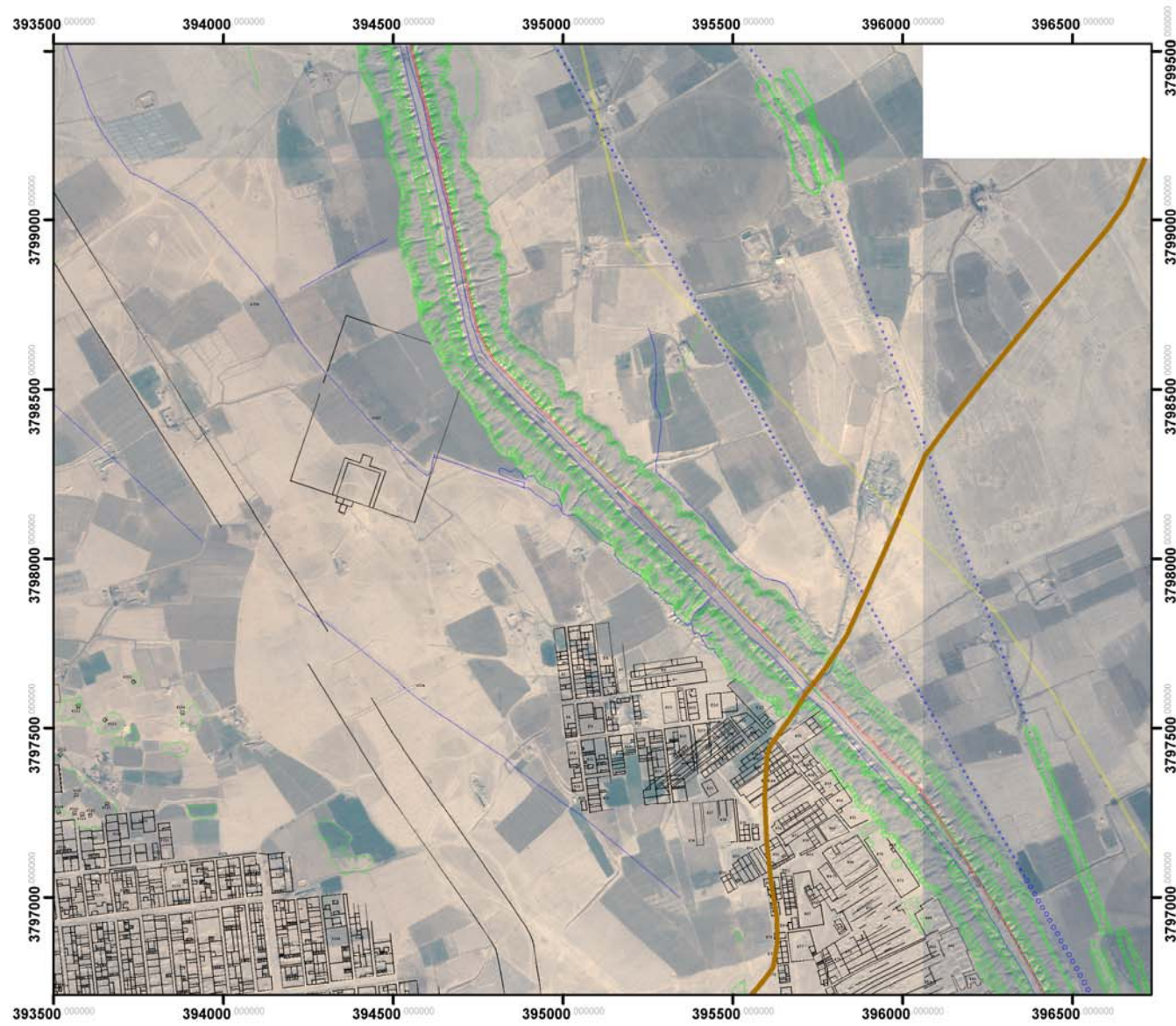


Figure 16 Sheet 107 Ashnas Northeast with archaeological plan overlay

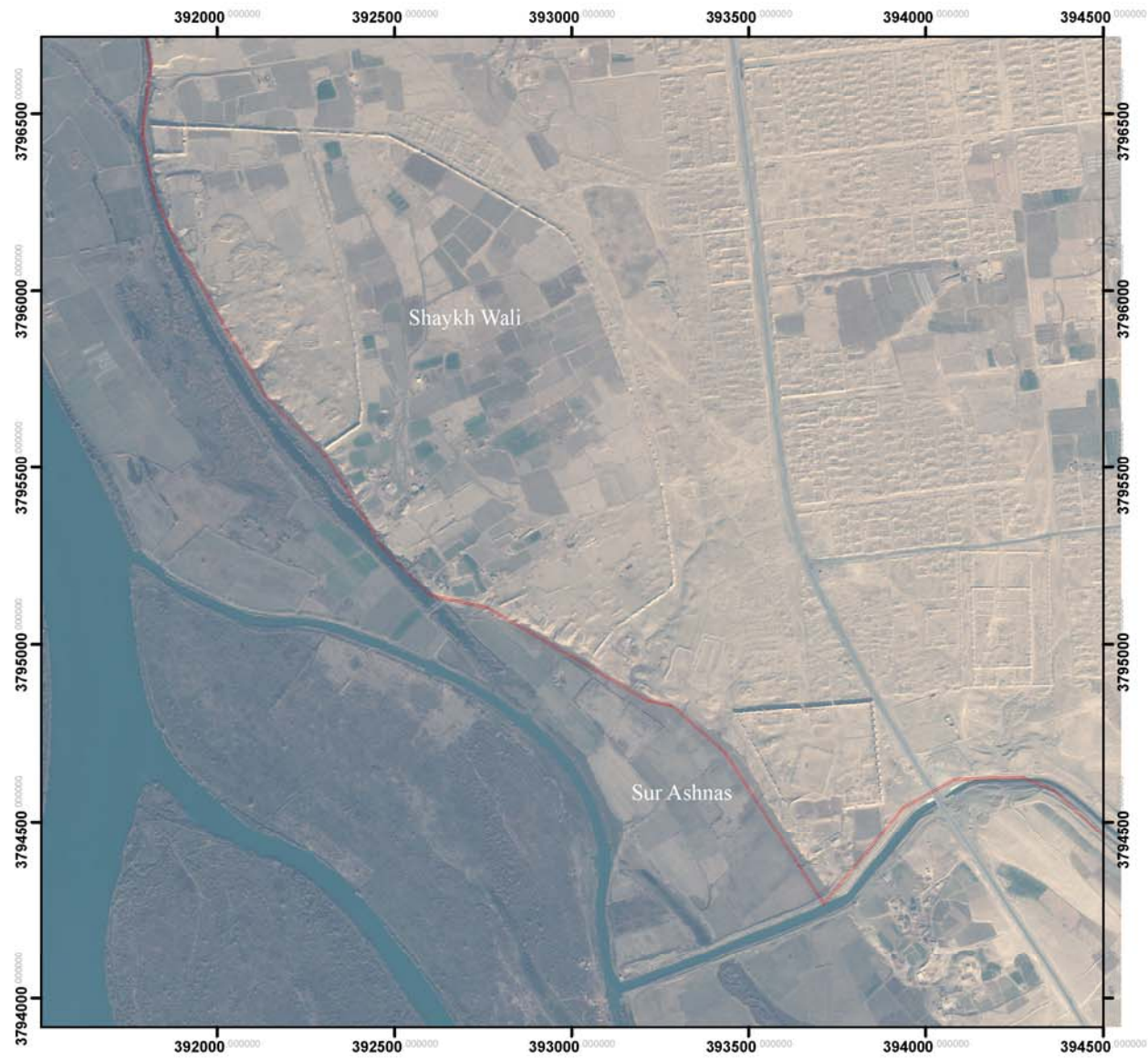


Figure 17 Sheet 108 Ashnas and Shaykh Wali



Figure 18 Sheet 108 Ashnas and Shaykh Wali with archaeological plan overlay

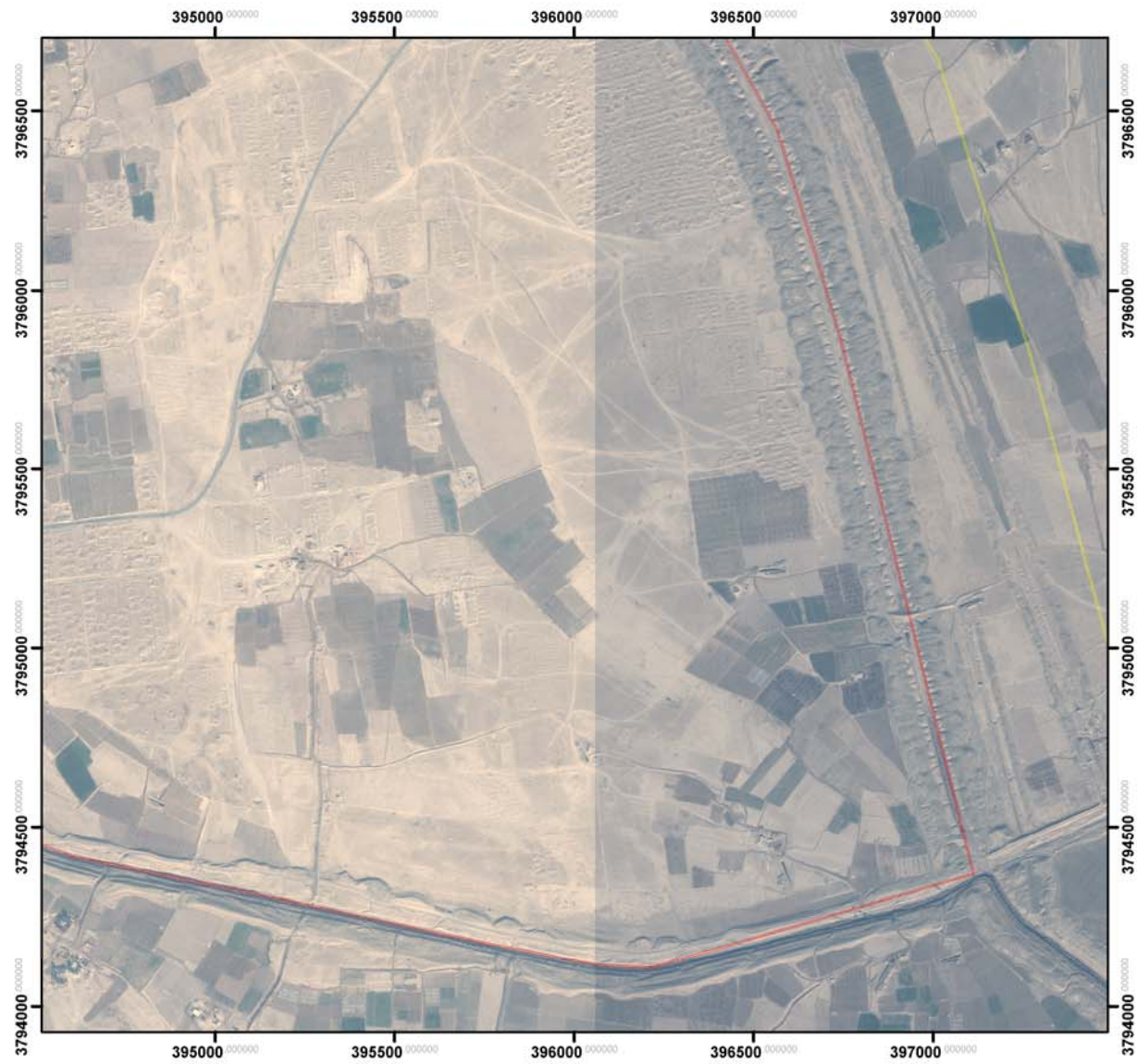


Figure 19 Sheet 109 Ashnas East

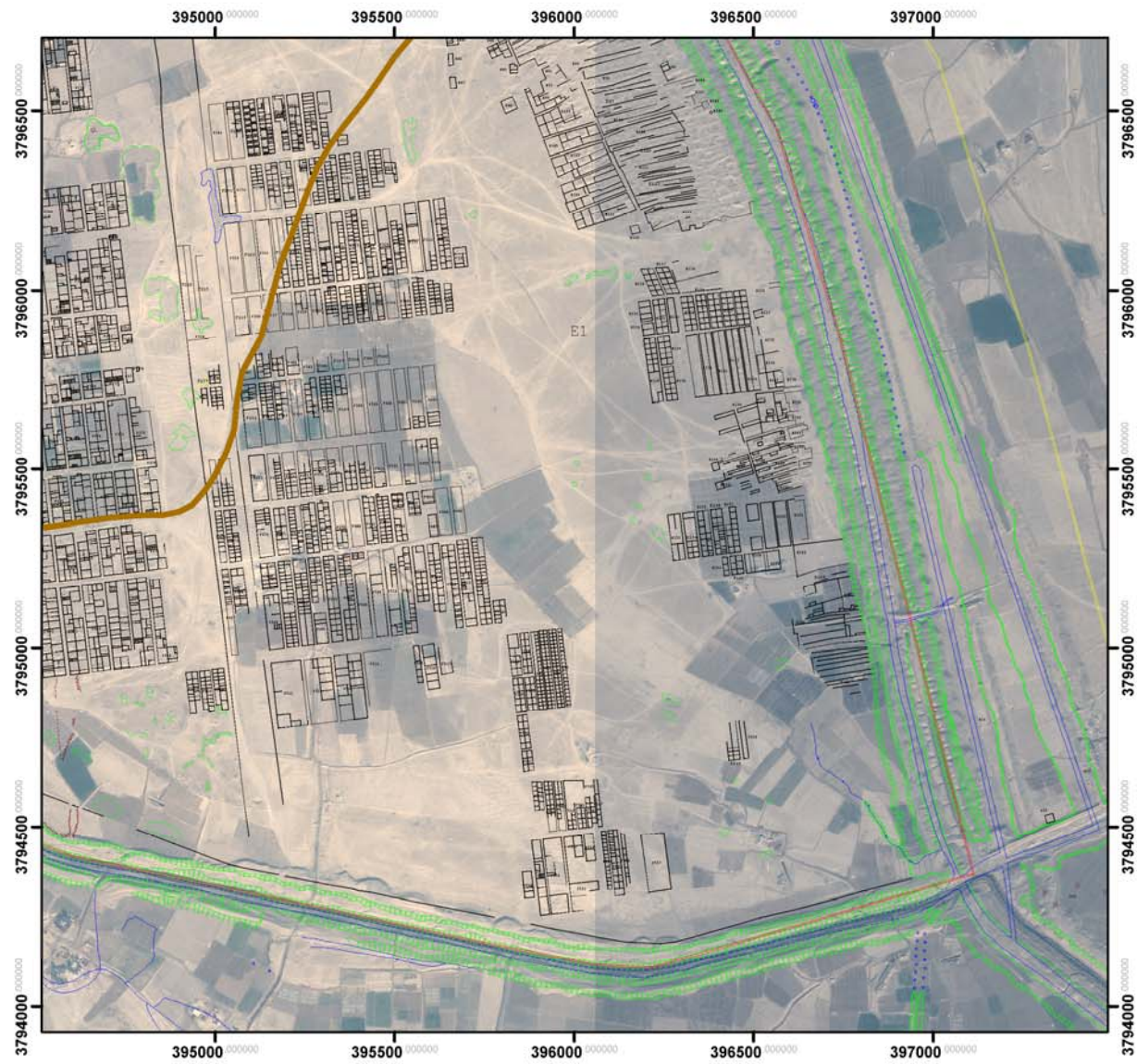


Figure 20 Sheet 109 Ashnas East with archaeological plan overlay

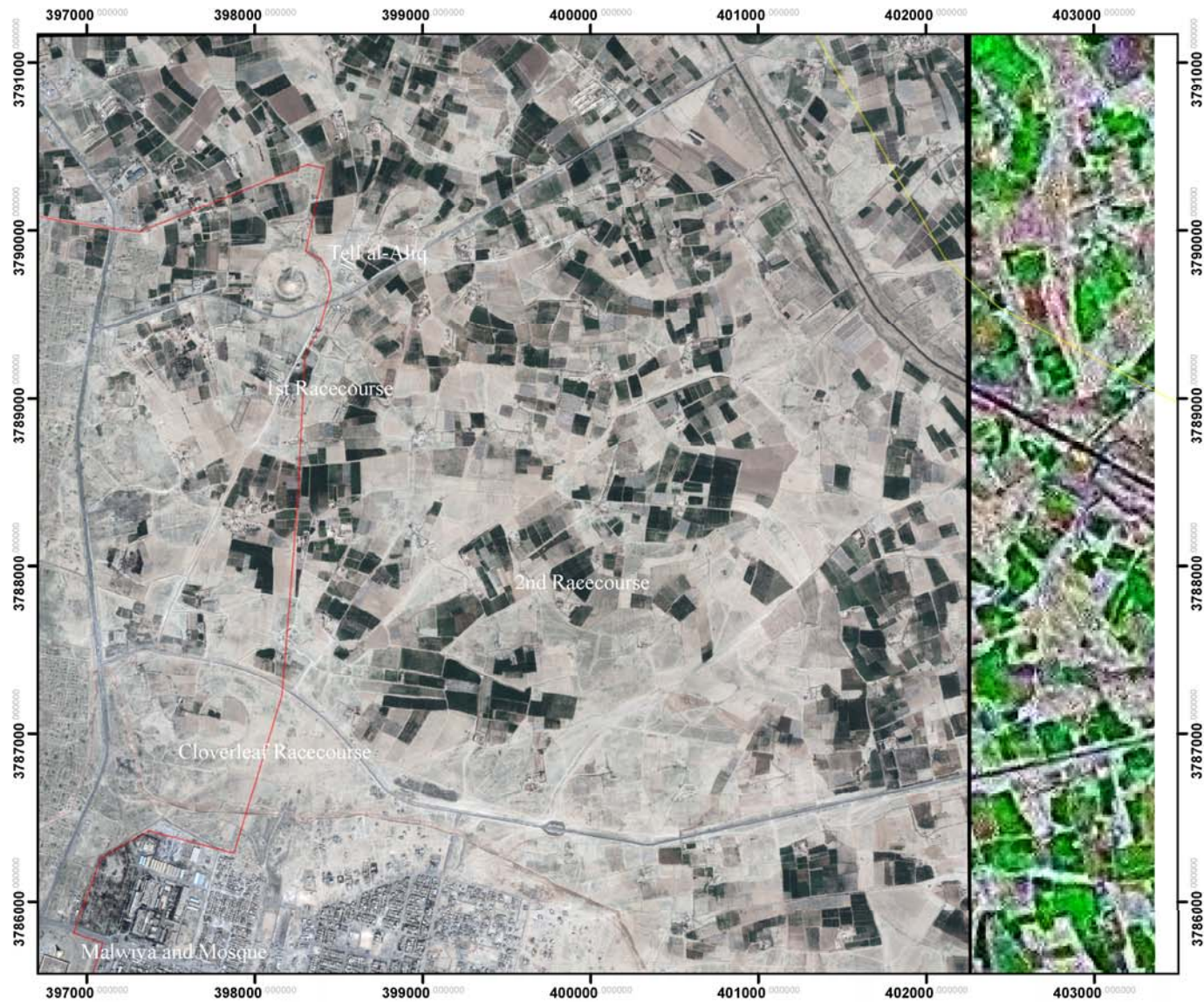


Figure 21 Sheet 201 Samarra Northeast

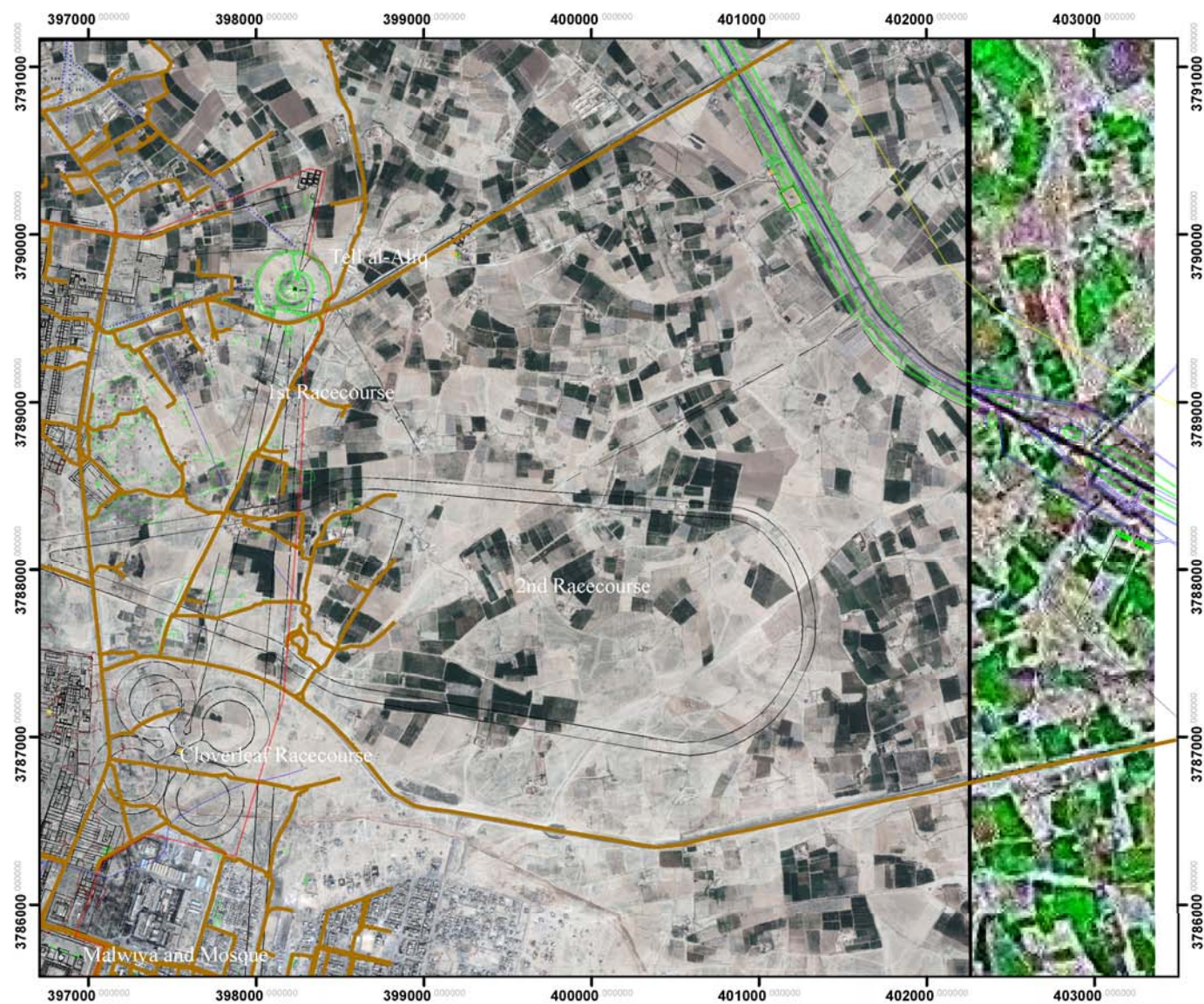


Figure 22 Sheet 201 Samarra Northeast with archaeological plan overlay

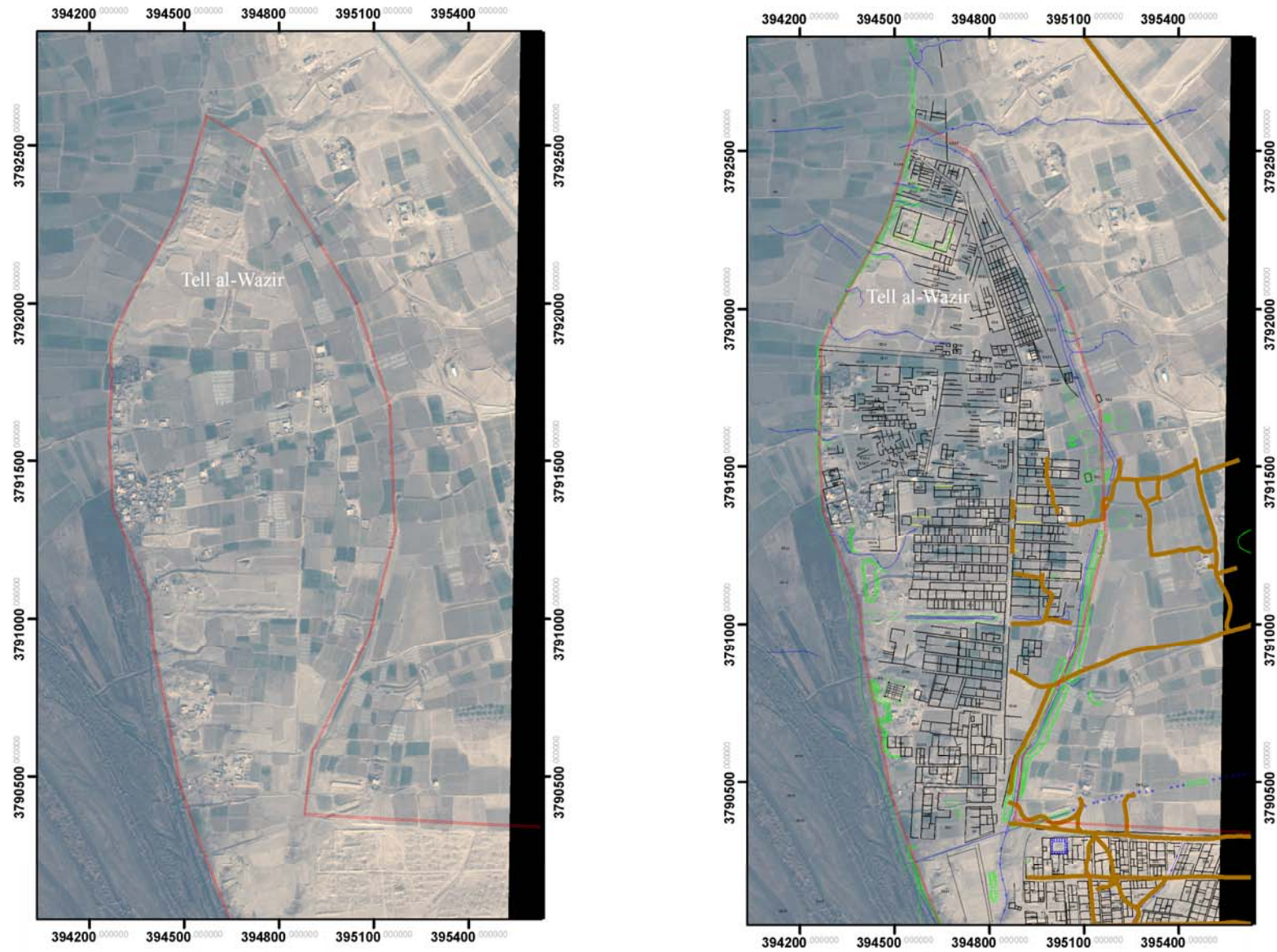


Figure 23 Sheet 110 Tell al-Wazir



Figure 24 Sheet 111 Qasr al-Khalifa – Caliphal Palace



Figure 25 Sheet 111 Qasr al-Khalifa – Caliphal Palace with archaeological plan overlay

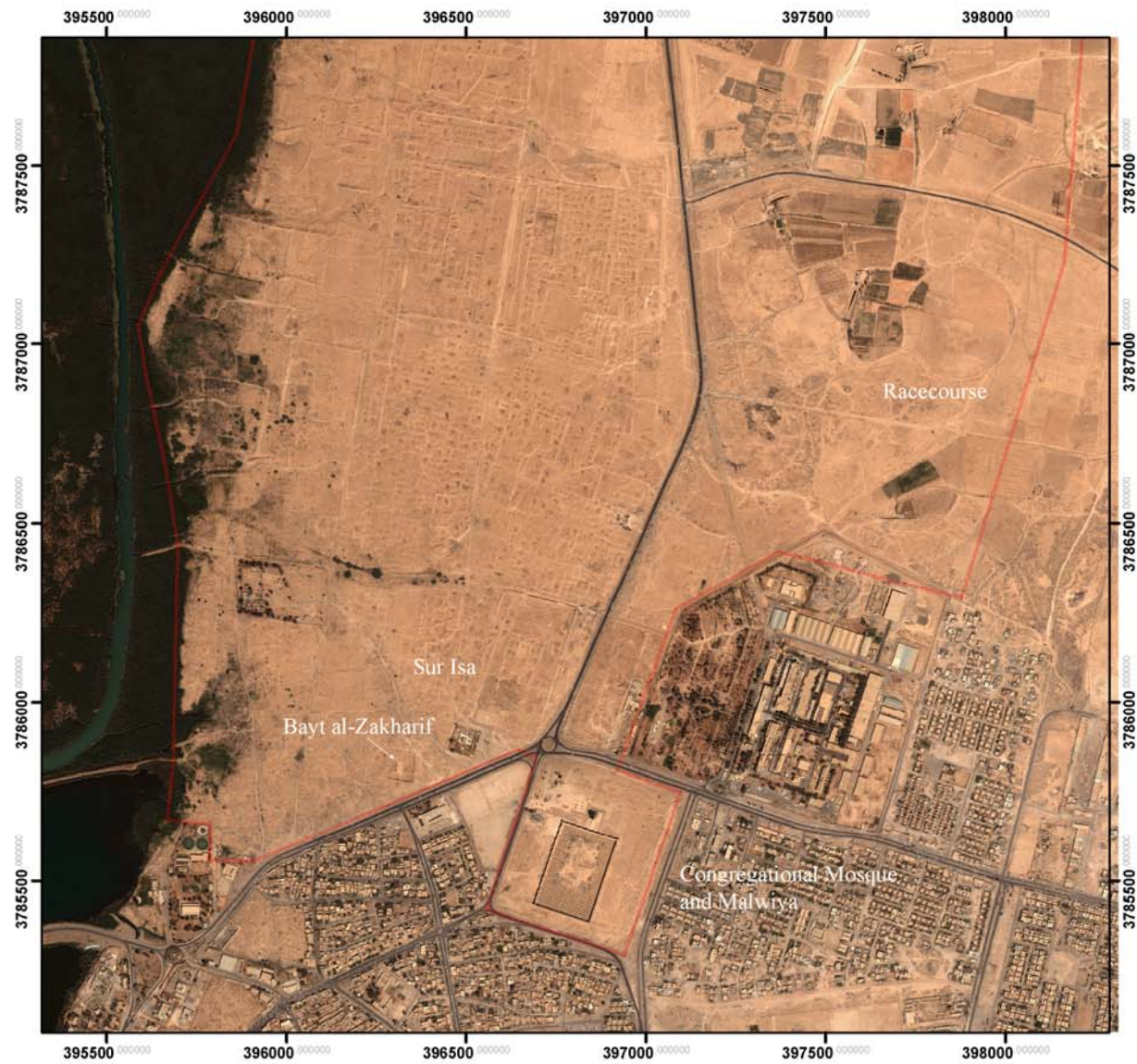


Figure 26 Sheet 112 Central City North



Figure 27 Sheet 112 Central City North with archaeological plan overlay



Figure 28 Sheet 113 Central City South



Figure 29 Sheet 113 Central City South with archaeological plan overlay

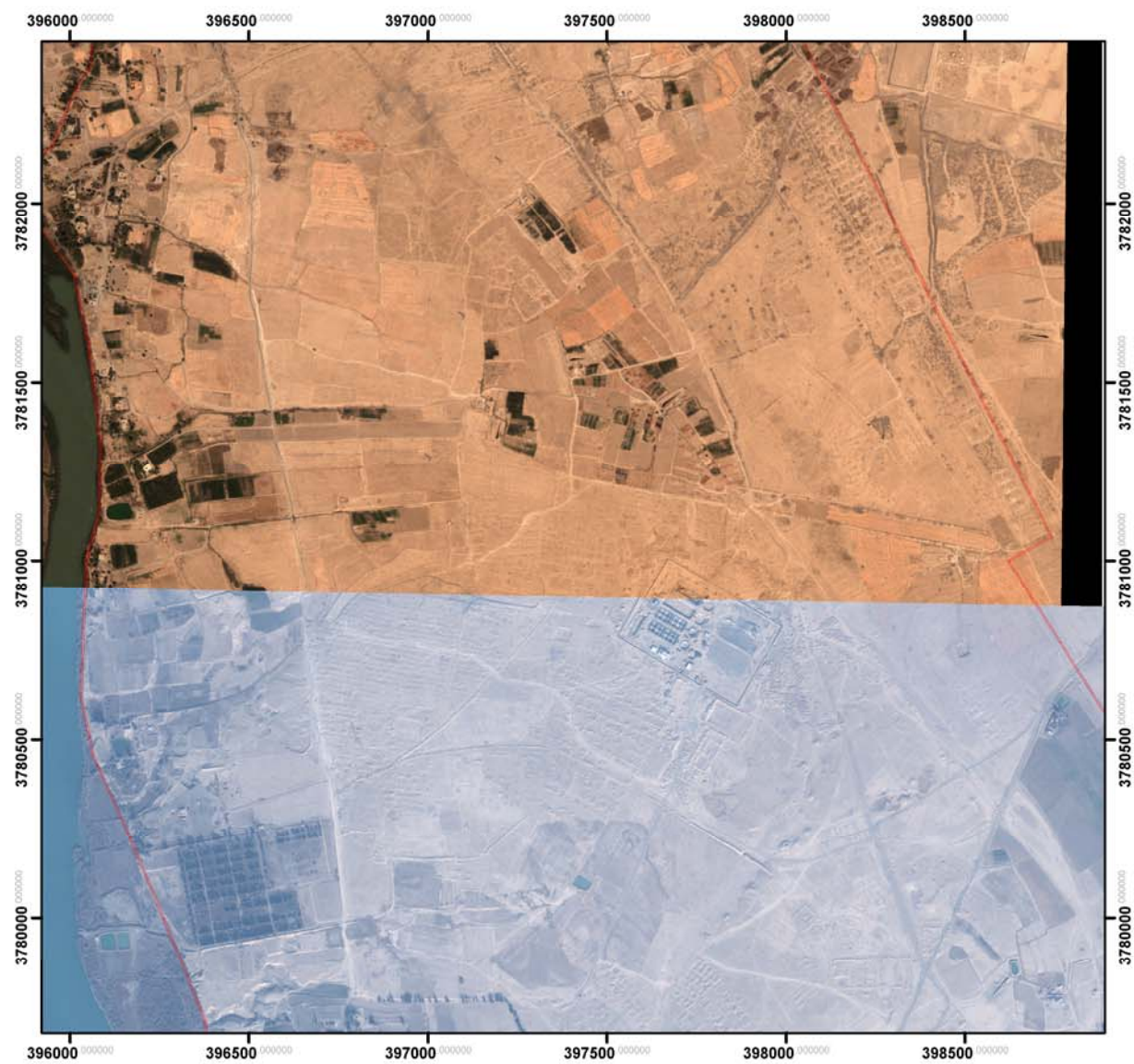


Figure 30 Sheet 114 Jubayriyya

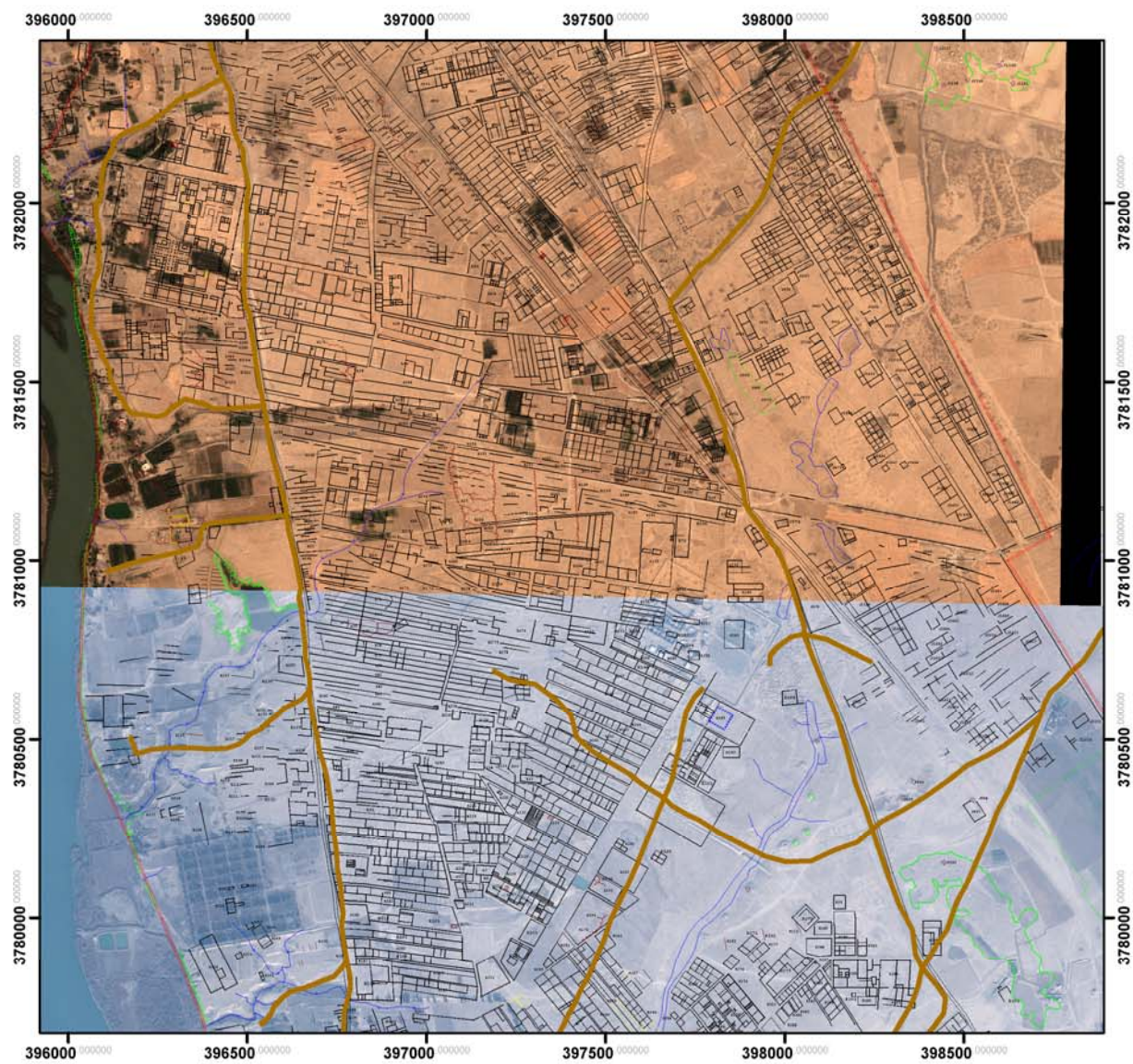


Figure 31 Sheet 114 Jubayriyya with archaeological plan overlay

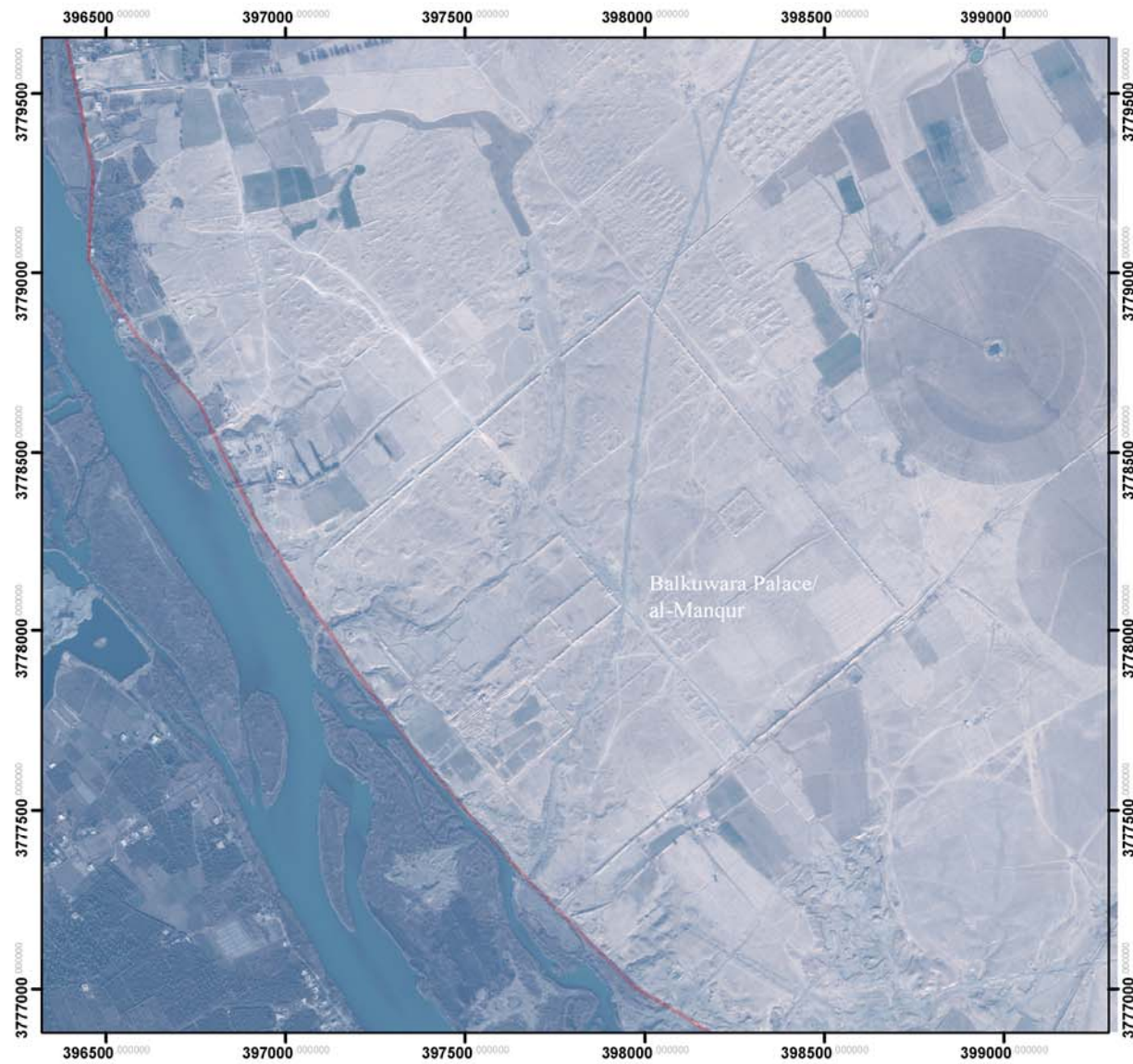


Figure 32 Sheet 115 Balkuwara

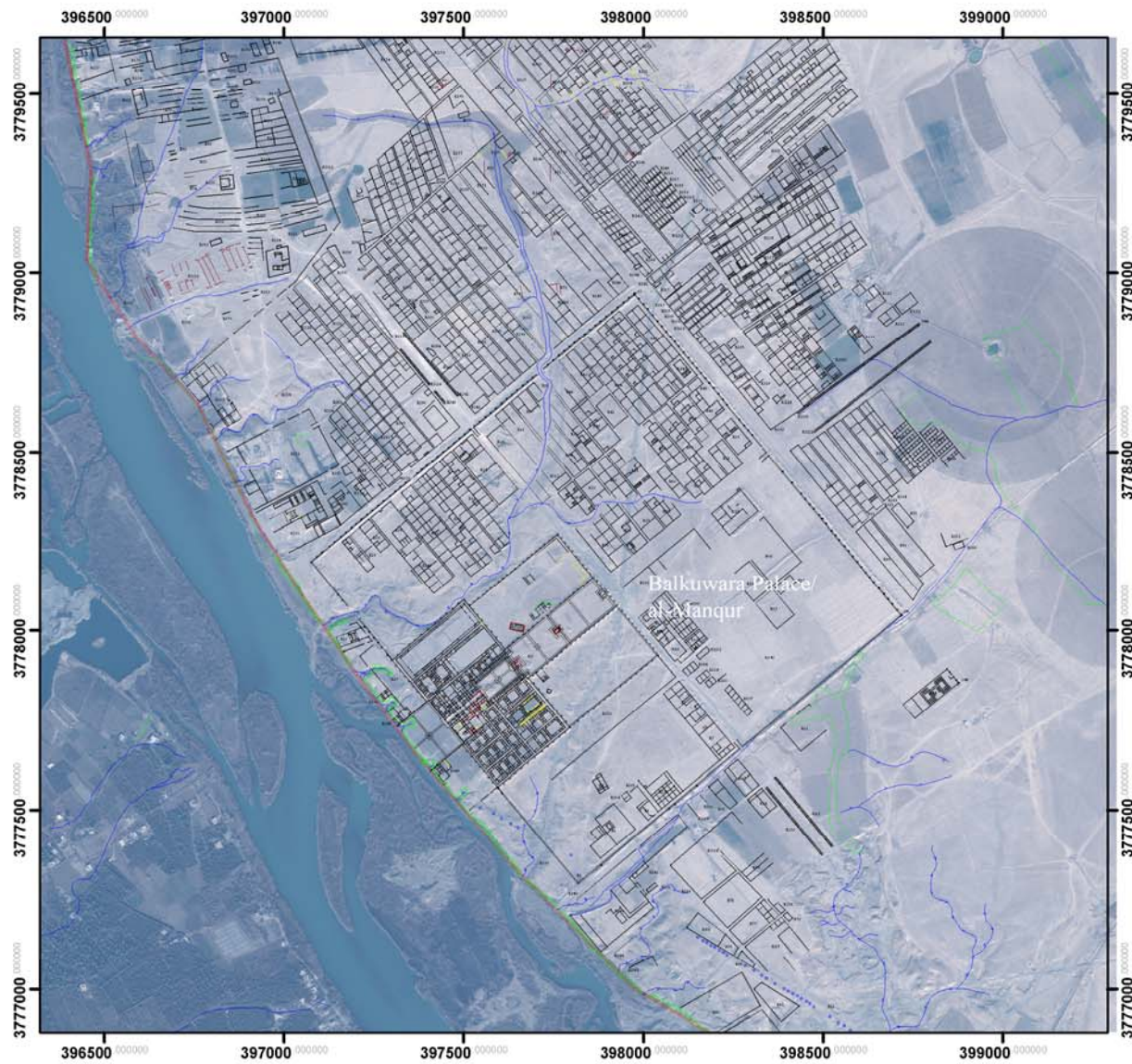


Figure 33 Sheet 115 Balkuwara with archaeological plan overlay



Figure 34 Sheet 116 al-Qadisiyya and al-Musharrahat

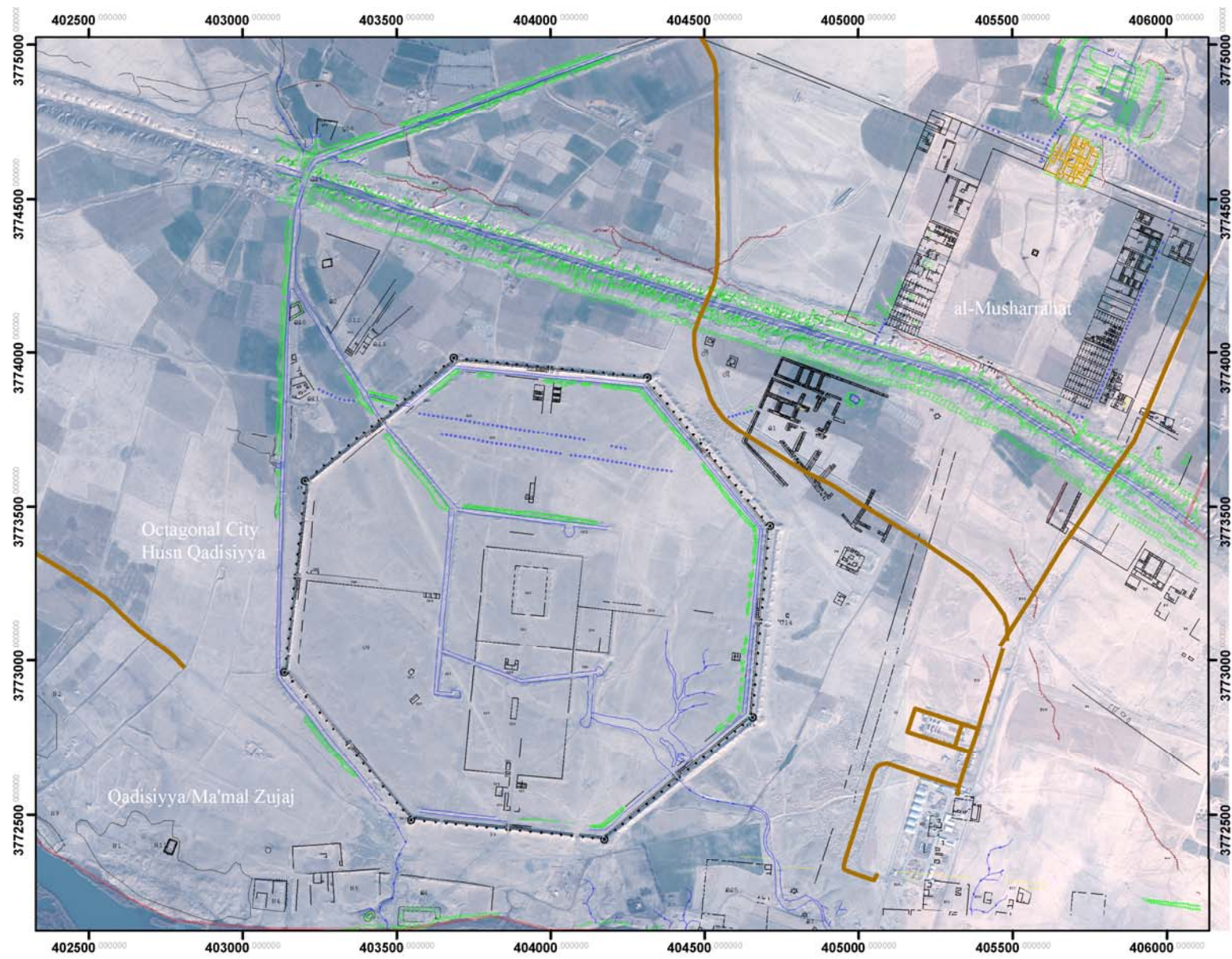


Figure 35 Sheet 116 al-Qadisiyya and al-Musharrahat with archaeological plan overlay



Figure 36 Sheet 121 al-Qadisiyya East

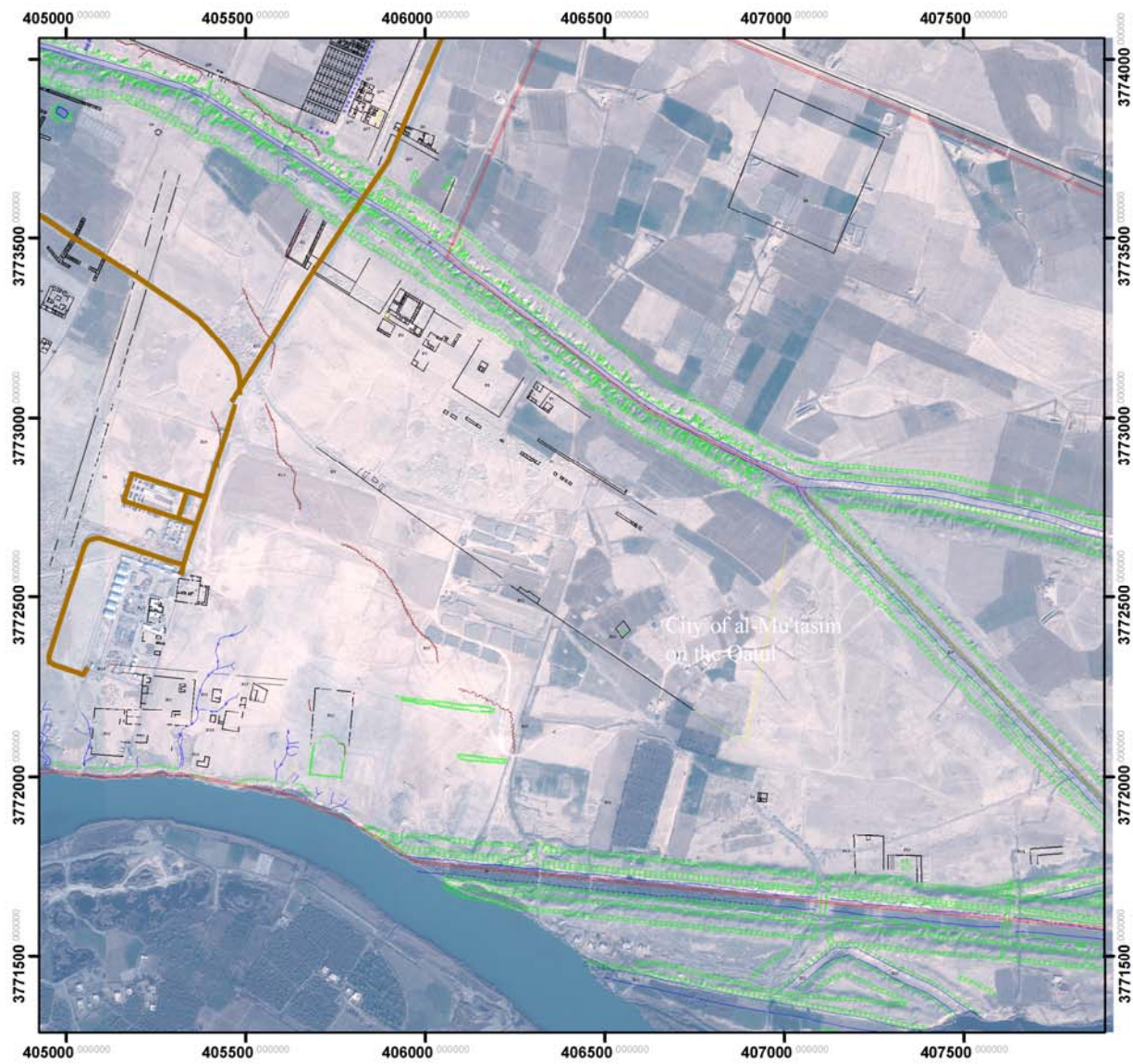


Figure 37 Sheet 121 al-Qadisiyya East with archaeological plan overlay

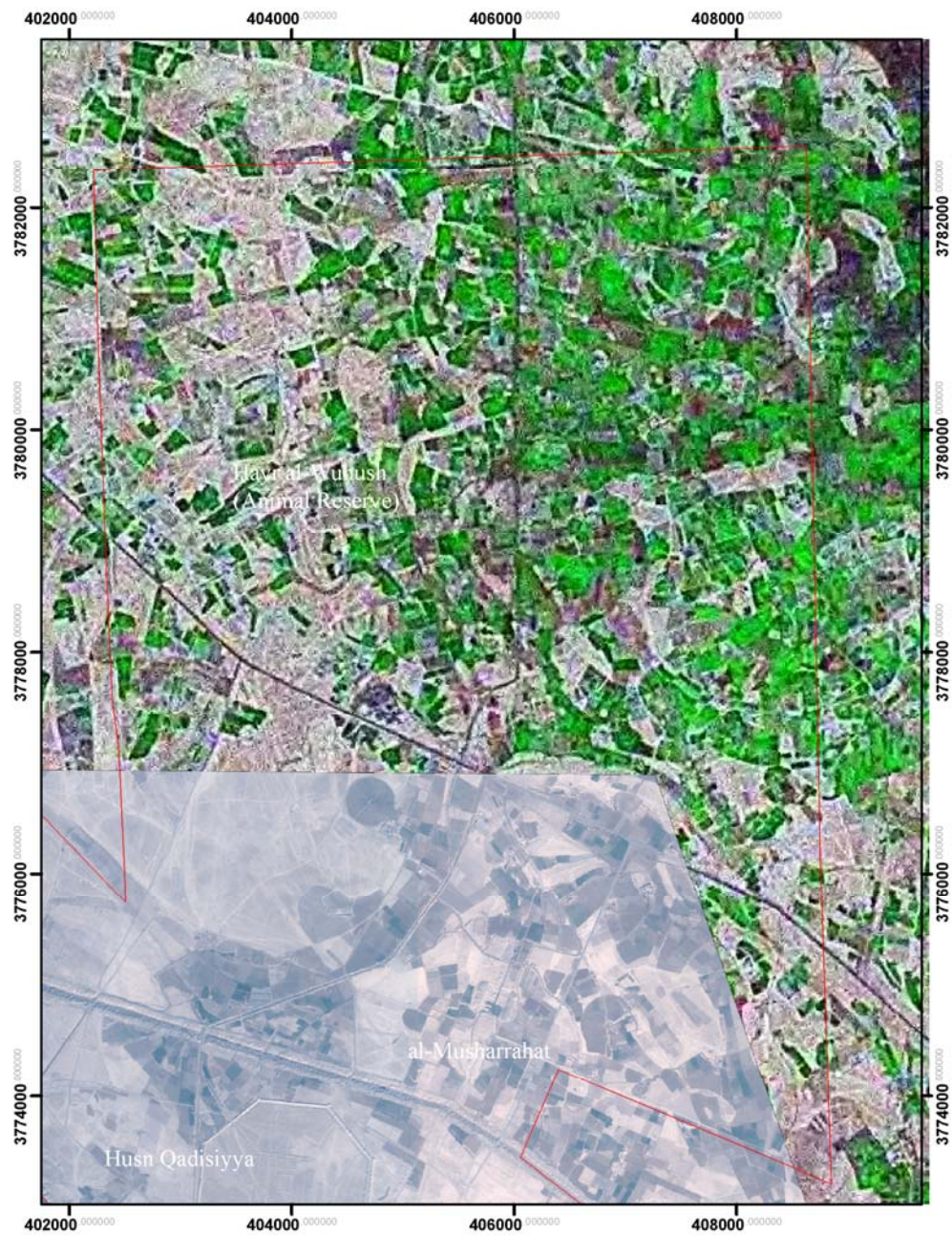


Figure 38 Sheet 203 al-Musharrahah and the Animal Reserve (Hayr al-Wuhush)

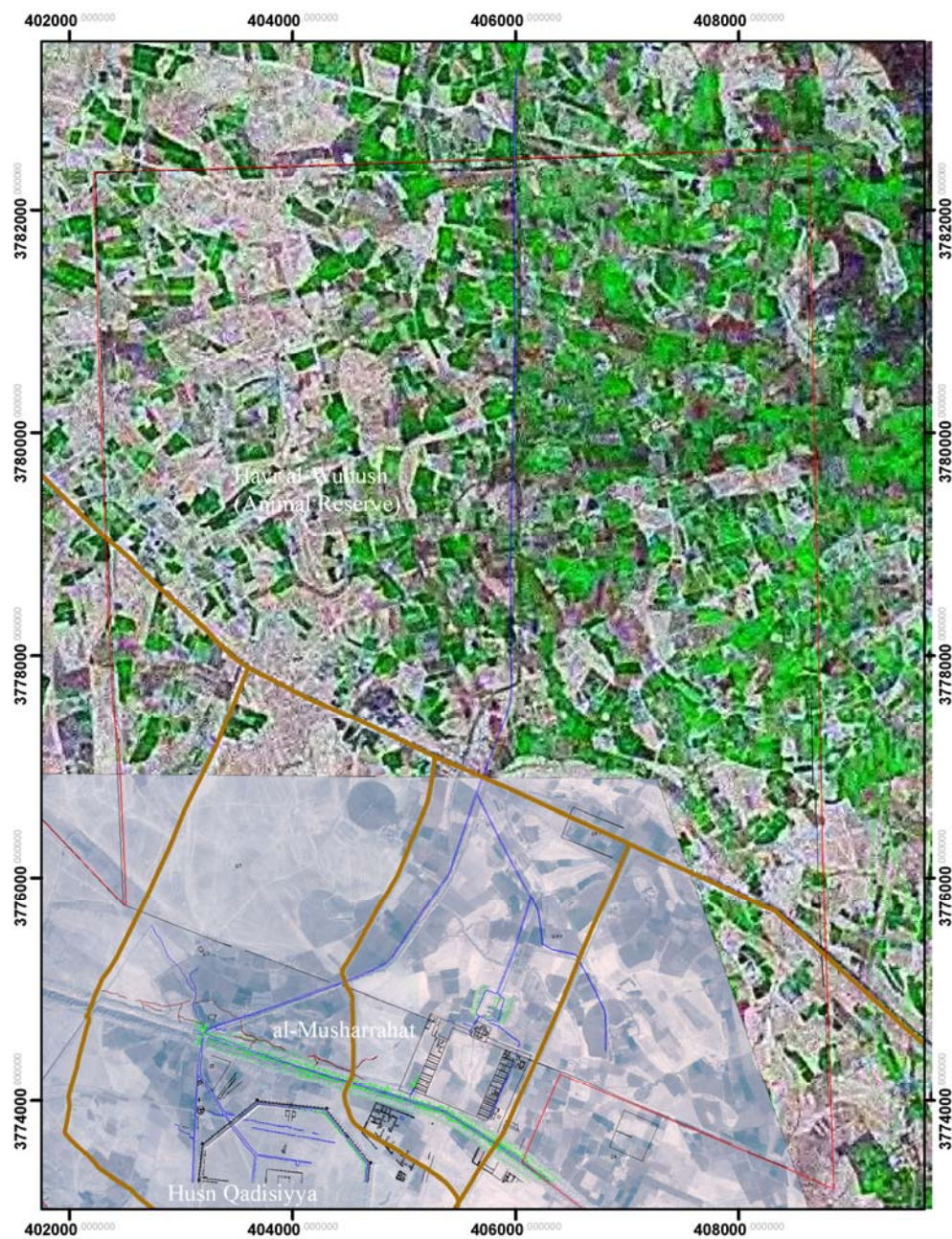


Figure 39 Sheet 203 al-Musharrahah and the Animal Reserve (Hayr al-Wuhush) with archaeological plan overlay

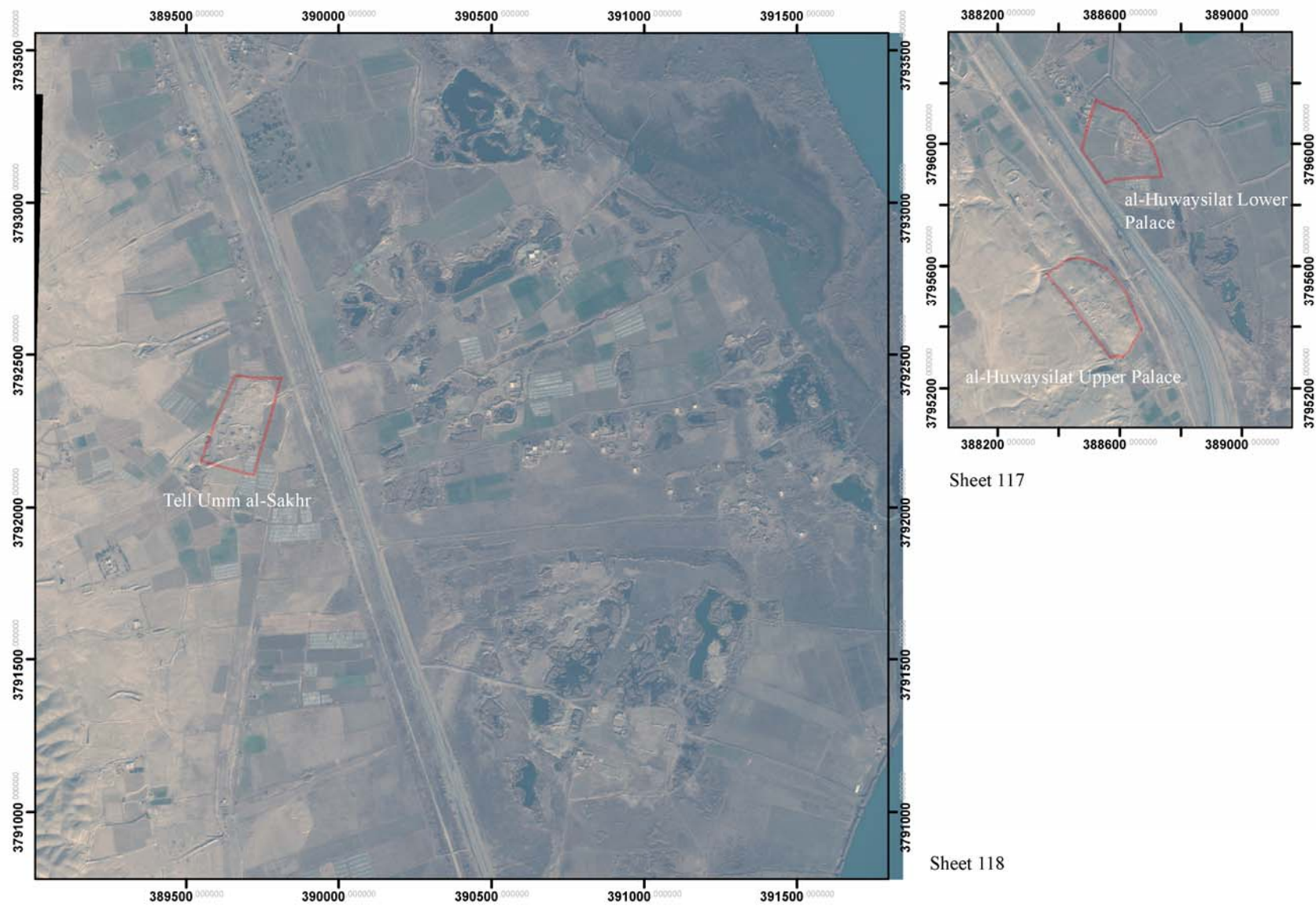


Figure 40 Sheet 117 al-Huwaysilat and Sheet 118 Tell Umm al-Sakhr

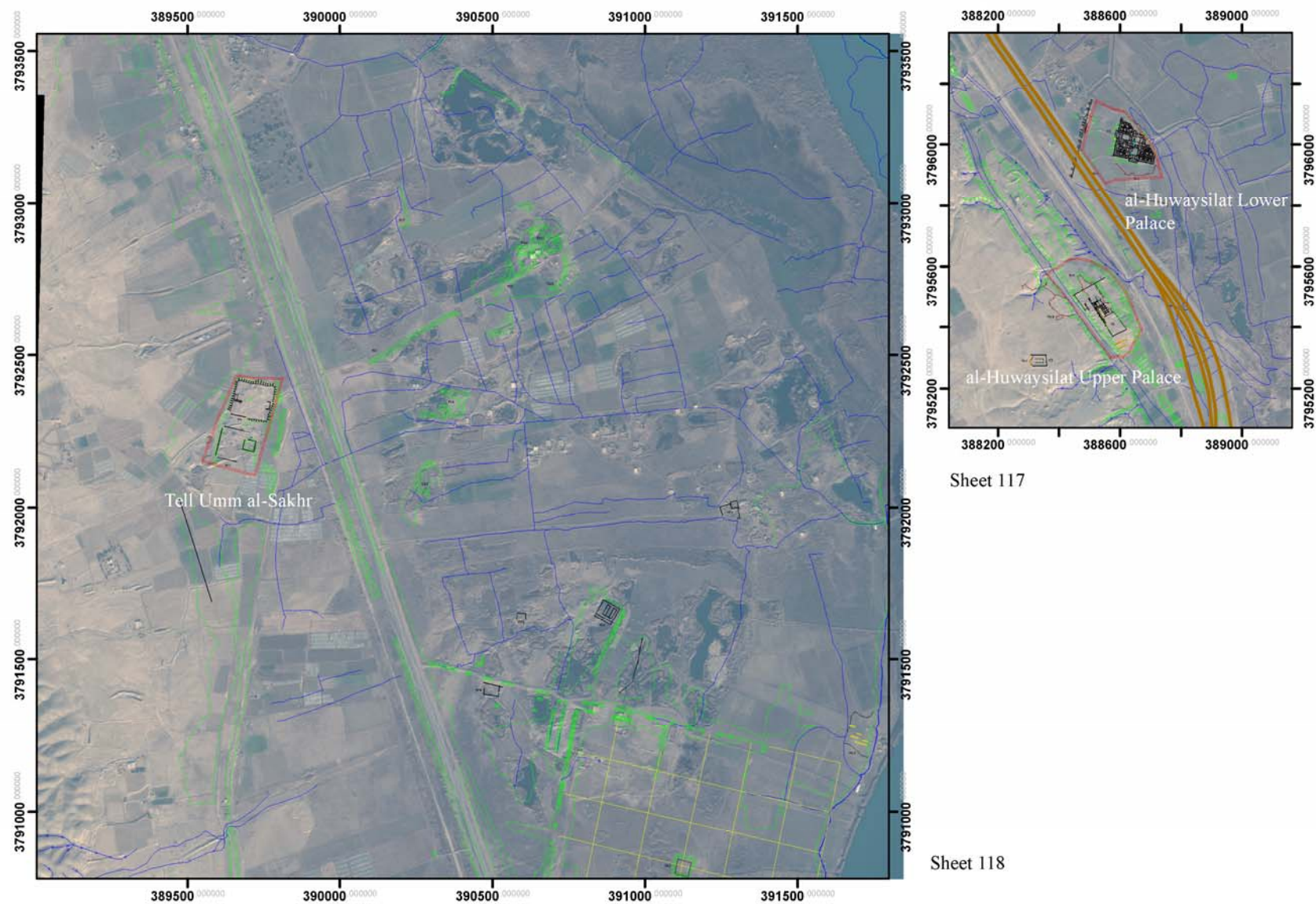


Figure 41 Sheet 117 al-Huwaysilat and Sheet 118 Tell Umm al-Sakhr with archaeological plan overlay



Figure 42 Sheet 119 al-Ma'shuq

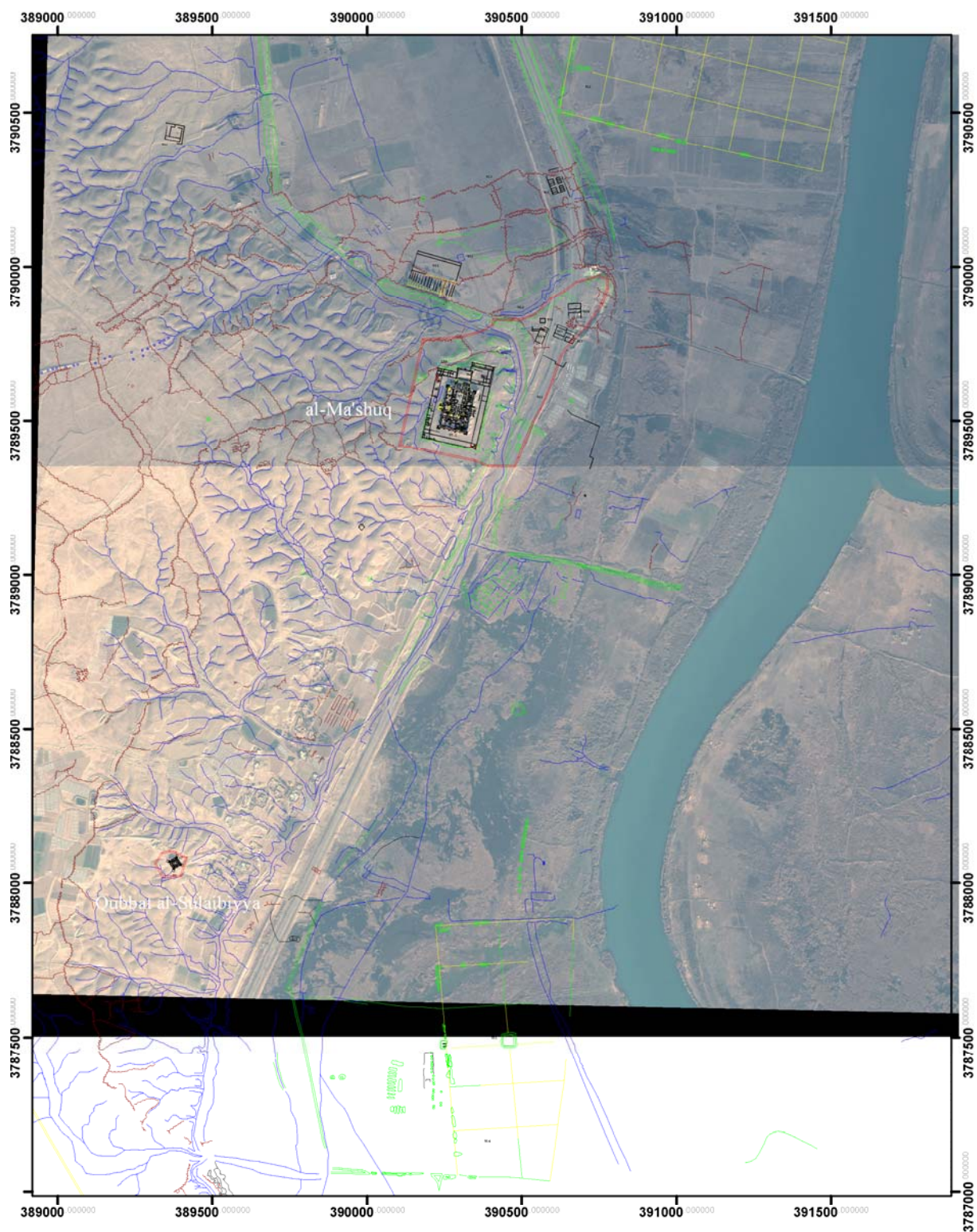
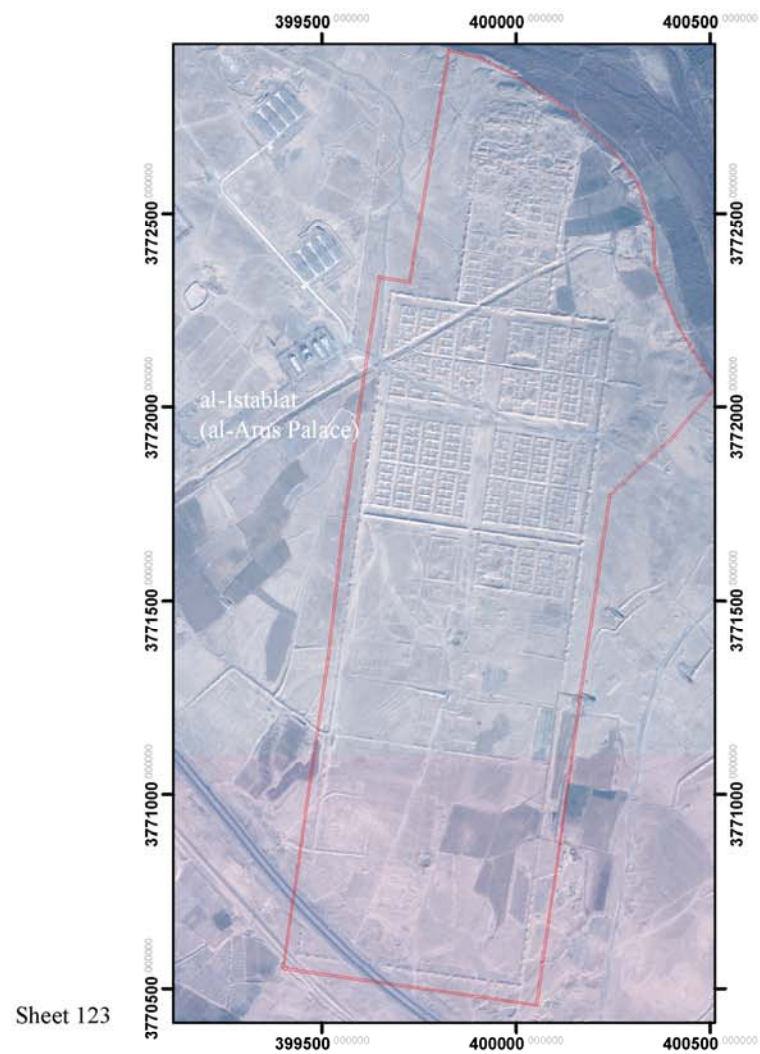


Figure 43 Sheet 119 al-Ma'shuq with archaeological plan overlay

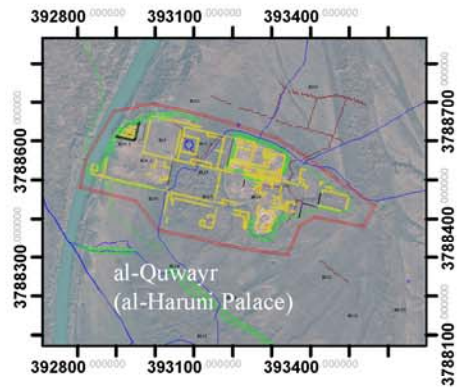


Sheet 120

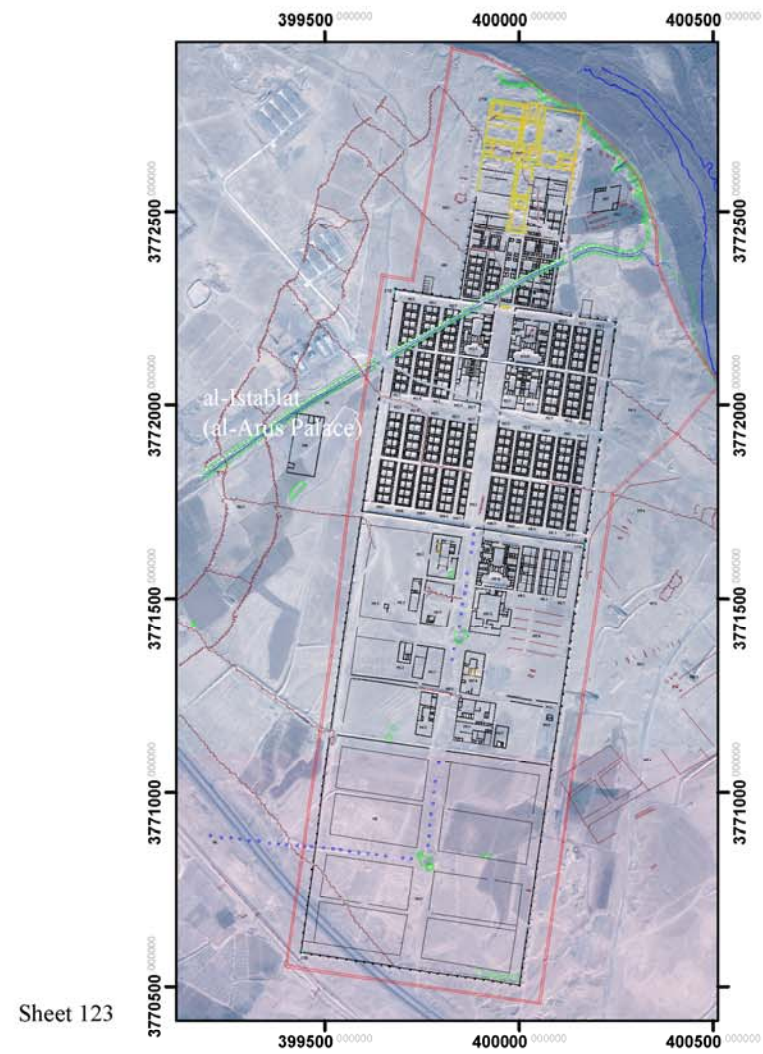


Sheet 123

Figure 44 Sheet 120 al-Quwayr and Sheet 123 al-Istablat



Sheet 120



Sheet 123

Figure 45 Sheet 120 al-Quwayr and Sheet 123 al-Istablal with archaeological plan overlay