

### 1.d Geographical coordinates to the nearest second

Grotto:	Latitude	31° 42' 14" N
	Longitude	35° 12' 25" E
B1:	Latitude	31° 42' 17" N
	Longitude	35° 12' 35" E
B2:	Latitude	31° 42' 04" N
	Longitude	35° 12' 28" E
B3:	Latitude	31° 42' 18" N
	Longitude	35° 12' 03" E
B4:	Latitude	31° 42' 32" N
	Longitude	35° 12' 14" E
C1:	Latitude	31° 42' 19" N
	Longitude	35° 12' 13" E
C2:	Latitude	31° 42' 16" N
	Longitude	35° 12' 14" E
C3:	Latitude	31° 42' 12" N
	Longitude	35° 12' 21" E
C4:	Latitude	31° 42' 12" N
	Longitude	35° 12' 31" E
C5:	Latitude	31° 42' 15" N
	Longitude	35° 12' 33" E
C6:	Latitude	31° 42' 25" N
	Longitude	35° 12' 14" E



**Fig. 1.3** Map of the Nomination Area

- Church of the Nativity
- Convents Surrounding the Church; the Greek Orthodox Convent, Franciscan Monastery and Armenian Convent
- Pilgrimage Route and the Gardens East of the Church
- Buffer Zone

*1.e Maps and Plans, showing the boundaries of the nomintaed property and the buffer zone*



**Fig. 1.4** Palestine within the Middle East context



**Fig. 1.5** Map of Palestine



- the Church of the Nativity
- the three Convents encroaching the Church
- the Gardens to the east of the Church

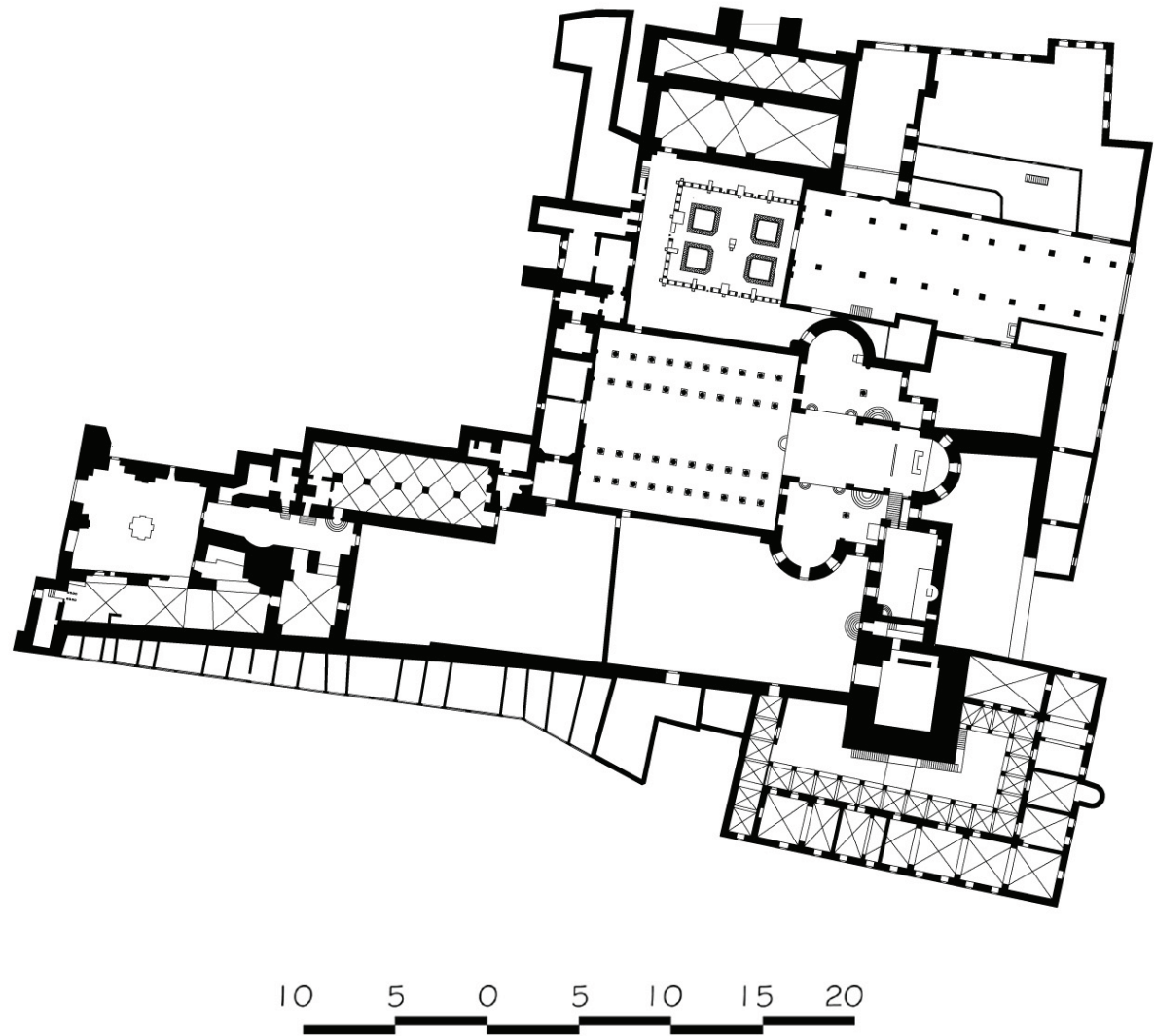


**Fig 1.6** Aerial photograph of the Church of the Nativity, its architectural *ensemble*, and the gardens to the east of the Church

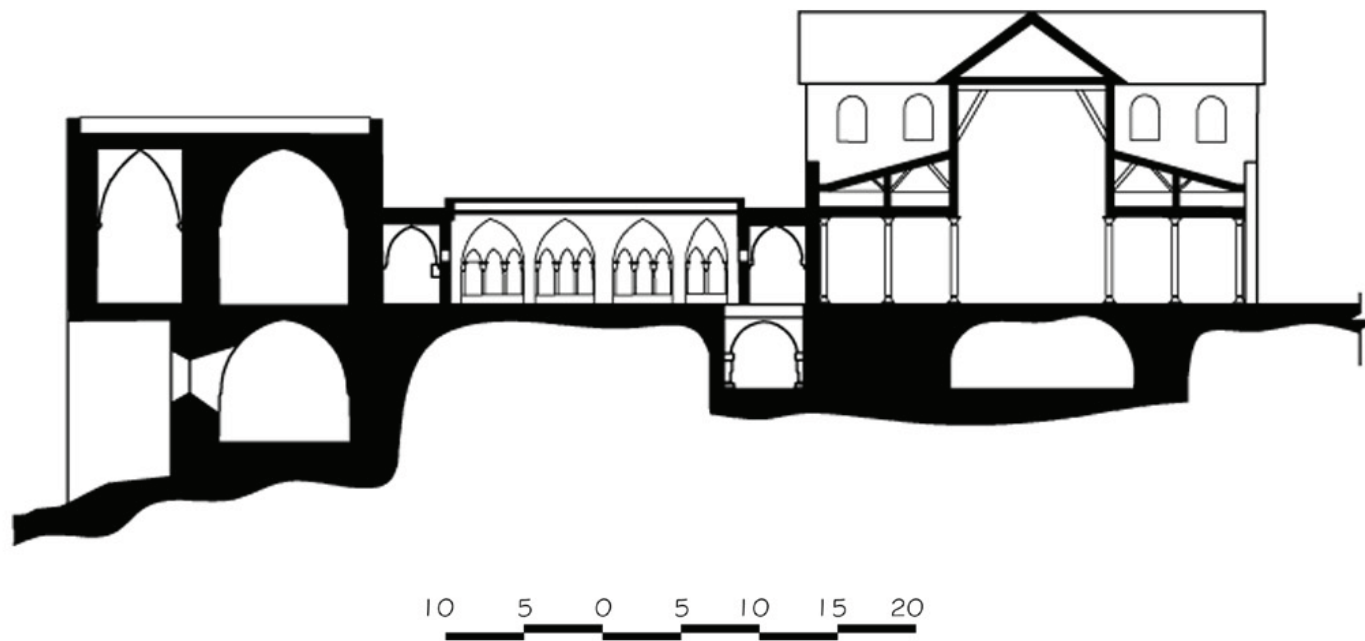


**Fig. 1.7** Morphological plan of the Pilgrimage Route, the Church of the Nativity and its architectural *ensemble*





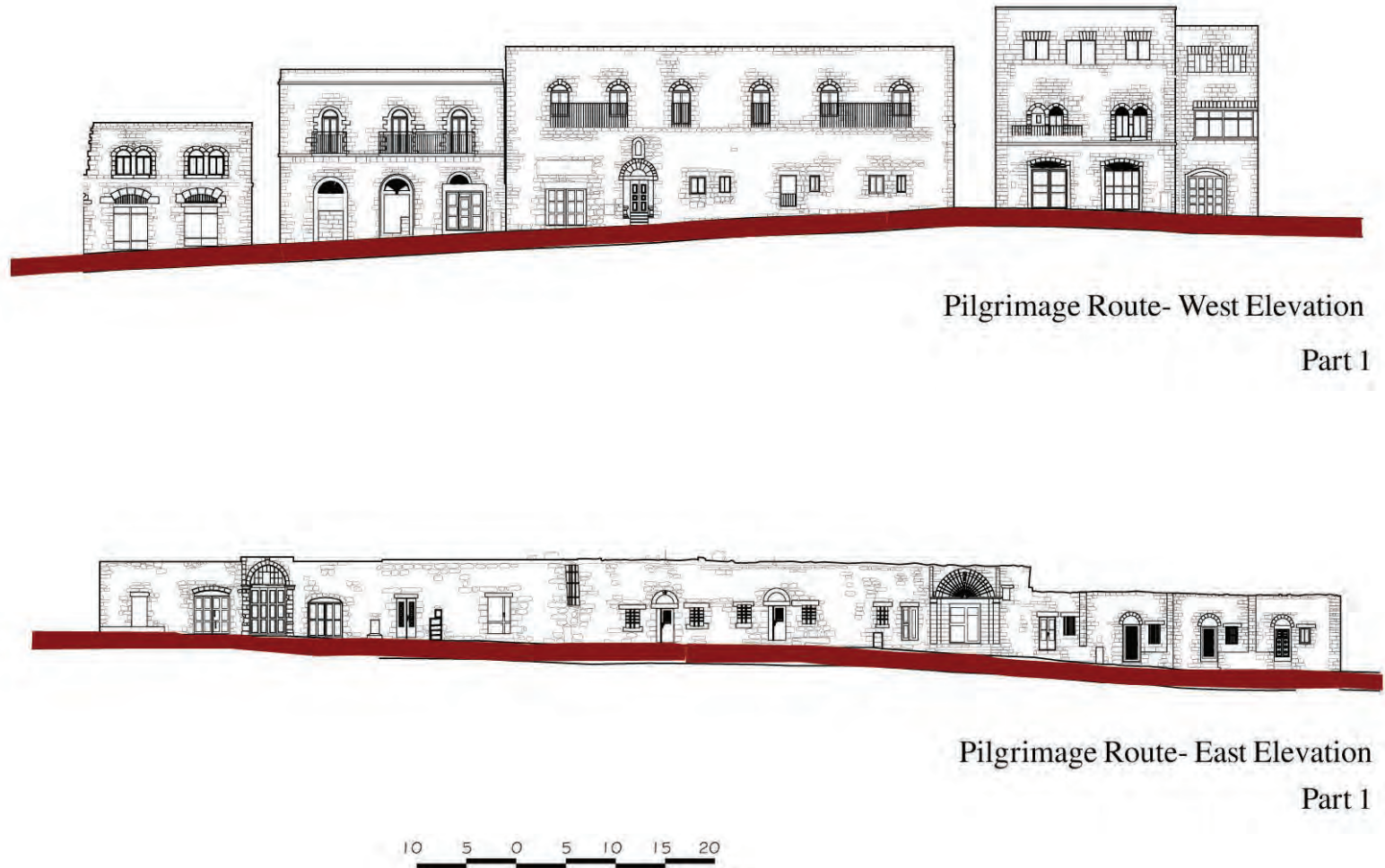
**Fig. 1.8** Plan of the Church of the Nativity and its architectural *ensemble*



**Fig. 1.9** Cross-section through the Church of the Nativity and its architectural *ensemble*

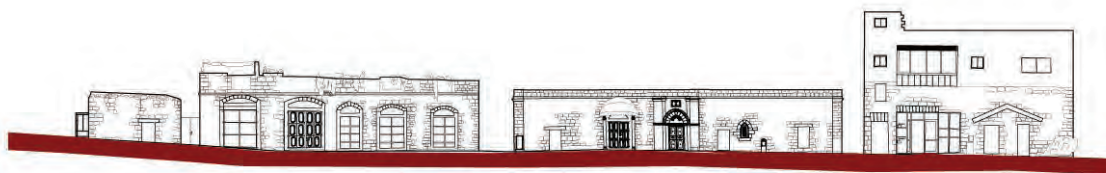


**Fig. 1.10** Elevations of the Pilgrimage Route, part 1





Pilgrimage Route- West Elevation  
Part 2



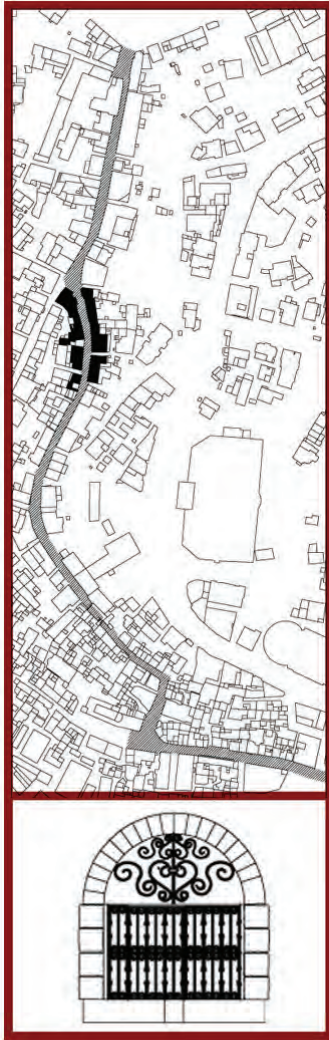
Pilgrimage Route- East Elevation  
Part2

10 5 0 5 10 15 20



**Fig. 1.11** Elevations of the Pilgrimage Route, part 2





**Fig. 1.12** Elevations of the Pilgrimage Route, part 3



Pilgrimage Route- West Elevation

Part 3



Pilgrimage Route- East Elevation

Part 3

10 5 0 5 10 15 20



Pilgrimage Route- West Elevation

Part 4



Pilgrimage Route- East Elevation

Part 4



**Fig. 1.13** Elevations of the Pilgrimage Route, part 4



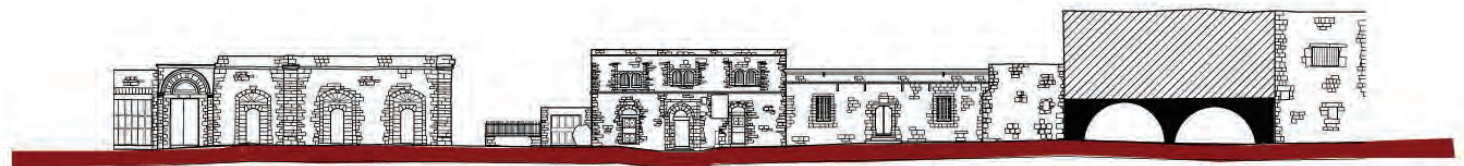


**Fig. 1.14** Elevations of the Pilgrimage Route, part 5



Pilgrimage Route- South Western Elevation

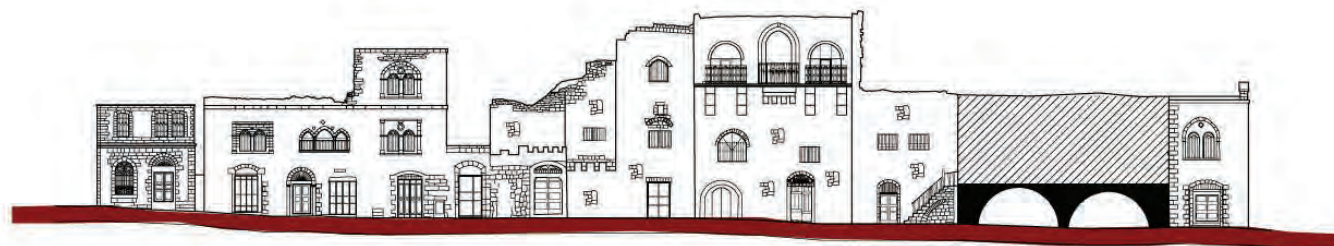
Part 5



Pilgrimage Route- North Eastern Elevation

Part 5

10 5 0 5 10 15 20



Pilgrimage Route- South Western Elevation

Part 6



Pilgrimage Route- North Eastern Elevation

Part 6

10 5 0 5 10 15 20

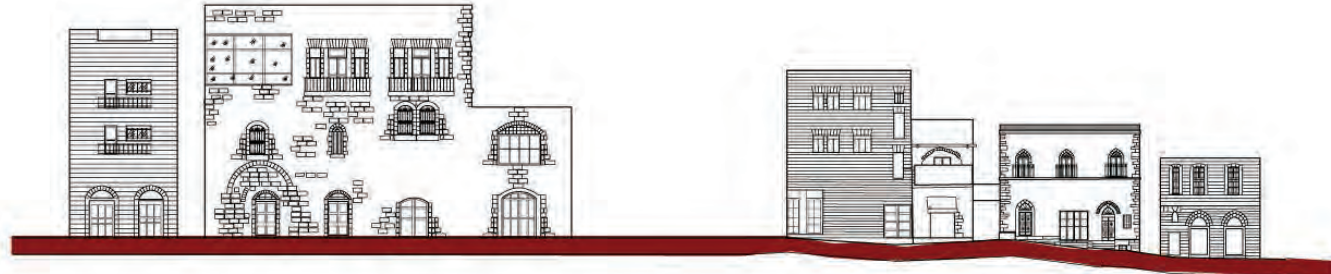


**Fig. 1.15** Elevations of the Pilgrimage Route, part 6



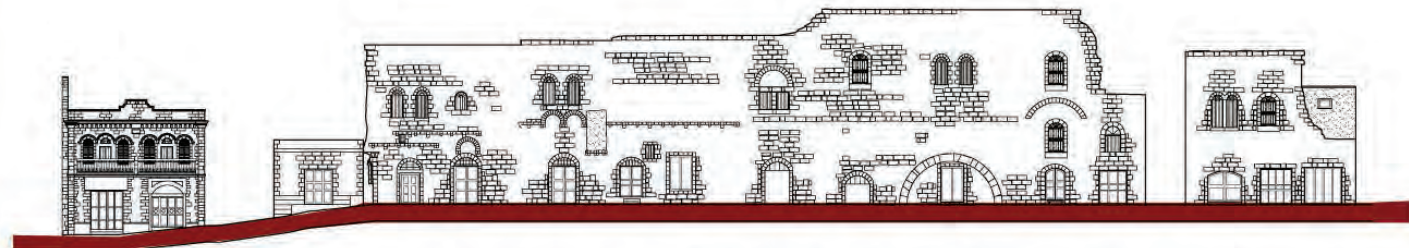


**Fig. 1.16** Elevations of the Pilgrimage Route, part 7



Pilgrimage Route- South Western Elevation

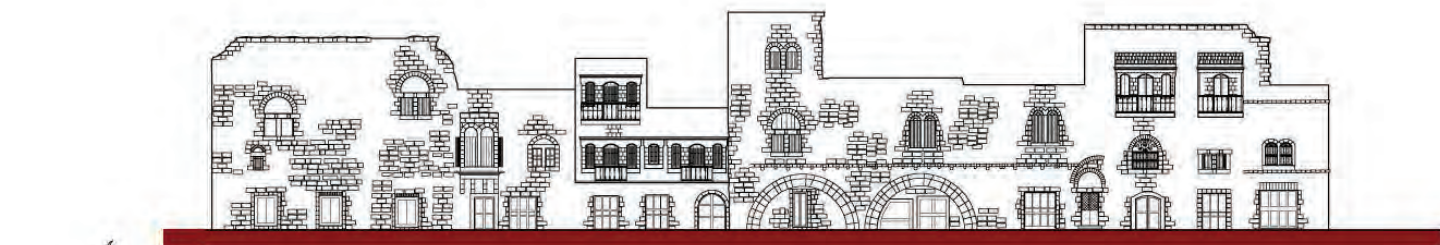
Part 7



Pilgrimage Route- North Eastern Elevation

Part 7

10 5 0 5 10 15 20



Pilgrimage Route- North Elevation

Part 8



Pilgrimage Route- South Elevation

Part 8



**Fig. 1.17** Elevations of the Pilgrimage Route, part 8



