



STATE OF CONSERVATION REPORT

Pampulha Modern Ensemble

(2016, Ref. 1493)

BRAZIL

42 COM



Index

State of Conservation Report

Pampulha Modern Ensemble - BRAZIL

- A. State of Conservation Report (English)
- B. Annexes
 - 1. Dino Barbieri Square – Historical analysis and intervention proposal

**Report on the implementation of the Recommendations mentioned in the Decision
40 COM 8B.33 to be examined by the World Heritage Committee.**

Brasília, November 29th, 2017

Report on the Pampulha Modern Ensemble, World Heritage List inscription n. 1493 of 2016, developed to comply with the demands expressed by the World Heritage Committee in its 40th session (Istanbul, 2016). The State-Party informs:

a) implementing the work set out in the Intervention Plan to:

(i) restore the Yacht Club building and its designed landscape,

Executive projects for the restoration of the main building, designed by Oscar Niemeyer, as well as the gardens designed by Burle Marx and the regeneration of the building annex to the club are currently underway.

Resources were obtained from a fine related to damage caused to the municipality's cultural heritage, identified by the Belo Horizonte City Hall as fit to be employed to fund all necessary interventions.

(ii) draw up a new design for Dino Barbieri Square to reflect Burle Marx's designs and submit it to the World Heritage Centre for review by the Advisory Bodies,

(iii) once approved, implement the design for Dino Barbieri Square,

The Superintendency of IPHAN/MG, through its technical staff, has developed a proposal of Restoration Project for Dino Barbieri Square, forwarded with this report and sent to the World Heritage Centre and its Advisory Bodies.

After the latter's response, in case the project is approved, the executive project and supplementary projects will be commissioned to enable the beginning of works.

(iv) restore the original entrance to the Ballroom,

The Belo Horizonte City Hall, through its Municipal Secretariat of Culture, its Municipal Culture Foundation and its Cultural Heritage Directorate, Public Archives and Pampulha Modern Ensemble, has commissioned an Architecture company to develop a proposal for the restoration of the original entrance to the Ballroom, as requested.

After studies and surveys at the site, the company Civitas Arquitetura e Patrimônio presented a proposal that was accepted by the Municipal Executive Power in November 2017. Works for the restoration of the entrance to the Ballroom will begin in December 2017, and should take 15 days.

(v) improve the water quality of the Lake to recreational standards, according to the planned timescale;

Works for the recovery of water quality in the Pampulha Lake, the object of Contract AJ-32/2015, began in March 2016. The quality of water in the Pampulha Lake has reached the levels of compliance with the parameters established for Class 3 (National Environmental Council-CONAMA Resolution 357/05 and DN Environmental Policy State Council-COPAM/CERH/001-08) according to the goal established in the Responsibility Matrix. The first stage of the execution of water quality recovery services at the Pampulha Lake, lasting 10 months, was undertaken from March/16 to December/16, when the established goal was reached. The second stage - maintenance phase - was initiated last January, and should continue until March/2018.

These works contemplate the application of two distinct and complementary technologies. One of them consists in the application of Bioremediation (ENZILIMP®) intended for the degradation of organic matter and disinfection (reducing the presence of fecal coliforms), and the other of a Physical-Chemical Environmental Remediation (PHOSLOCK®) specifically developed to reduce the concentration of phosphorus and control the proliferation of algae. The efficacy

of these technologies has been proven and certified by the competent environmental body IBAMA - Brazilian Institute of Environment and Renewable Natural Resources.

In this maintenance stage, monitoring efforts have obtained satisfactory results, which means that the water in the Pampulha Pond has retained its Class 3 status.

The Monitoring Program was structured in such a way as to enable an adequate assessment of the whole process of recovery of the lake water quality. This follow-up is being developed through monthly monitoring reports containing a technical assessment of the results obtained, with their respective analytic findings. Every three months, a consolidated report of activities and results in the corresponding period is issued, including the degrees of efficiency reached, the limnological response of the aquatic environment and the assessment of trends observed. These technical reports are available at the IPHAN website (www.iphan.gov.br).

b) augmenting the Management Plan to:

Information on requests I, II, III and V is below.

(iv) include a tourism strategy,

The Belo Horizonte City Hall, through Belotur - Belo Horizonte Municipal Tourism Company S/A, has developed and planned specific activities to be implemented in the Touristic Complex of Pampulha, where the Modern Ensemble is located. The following are the conceptual guidelines for the execution of activities aiming at the Touristic Development of Pampulha:

- a. Encouraging the local citizens' sense of belonging towards Pampulha;
- b. Integrated touristic planning of cultural and architectural attractions, events, leisure offerings, entertainment, cuisine, hospitality, accessibility, mobility;
- c. Constant attention to the parameters of supportability and "overload", considering the protection and conservation of the urban, architectural, environmental and landscaping complex and its adequate fruition;

- d. Adequate attention to the destination of uses, touristic typology and use of equipment, as an essential condition for preservation;

Regarding the Strategic Field, aiming at the complementation of the Master Plans (arising from PDTIS - Integrated Sustainable Tourism Development Plan of the Municipality of Belo Horizonte), the following actions are now underway:

1. Strategic Environmental Assessment - Underway

Agreement 822671/2015 signed with the Ministry of Tourism on 12/21/2015 and registered in the Municipality's Attorney General Office, with the intervention of the Municipal Environment Secretariat. Extract of Agreement published in the Union's Diário Oficial on 12/31/2015 and in the Municipality's Diário Oficial on 01/22/2016. The object of the Agreement is the Development of Strategic Environmental Assessment (AAE), planning for the touristic development of the municipality of Belo Horizonte, within the National Program for the Development of Tourism - National PRODETUR. This is a component of Environmental Management, aiming at the protection of the natural and cultural resources that comprise the basis of touristic activities in the municipality, intended to prevent and minimize the environmental and social impacts that may be produced by various touristic investments.

The activities in this component refer to the principles of environmentally sustainable development, considering quality of life, understanding and protecting biodiversity, with the involvement and participation of the various social groups and non-governmental entities in the field. The Pampulha, particularly the Modern Ensemble, are objects of this Agreement, counting with the direct participation of the Municipal Culture Foundation in the Monitoring Commission.

2. Institutional Strengthening - Underway

The project contemplates activities aimed at strengthening the management capacity of BELOTUR regarding Pampulha as a touristic product, according to the agreement with the Minas Gerais State government:

- a. Identifying and proposing a system of norms, regulations and quality indicators for the product Pampulha and its touristic services;

- b. Defining a management model for the public equipment and creating favorable conditions for the installation of new private equipment and specialized services, diversifying the supply and qualifying the touristic services offered in Pampulha.
3. Maintenance of Interpretive Signposts installed in June/2013 - Underway
4. Project for the Restructuring of a Tourist Information Centre, aligned with the Smart Destination guidelines (qualification and specialization of services) proposed by architect Veveco.
5. Articulation with the tourism supply chain in order to develop a diagnosis of obstacles to operation in the region and articulation of improvements - Underway.
6. Presentation of Research on Belonging of Pampulha undertaken in 2016 and assessment of monitoring mechanisms for the region - to be executed.
7. Renewal of Contract with Pampulha Retrô Tour - Underway

The project consists in the execution, by the INSTITUTO CULTURAL ARTIGOS E CARROS DE ÉPOCA (Cultural Institute of Period Articles and Cars), with the support of BELOTUR, of guided tours with regular schedules called "Pampulha Retrô Tour", as an activity integrating the promotion and enjoyment of the Pampulha Modern Ensemble - Cultural World Heritage.

8. Development of studies and projects for the implementation of specialized tourist services - nautical exploration (Awaiting authorization for nautical use and regulation)
9. Assessment for the implementation of tourist transport lines.

(vi) strengthen the involvement of local communities in the management processes;

On September 1, 2017, the Municipality's Diário Oficial published Decrees restructuring bodies and entities in Belo Horizonte's Executive Power, including Decree n. 16.684, of August 31, 2017, indicating the new organic structure of the Municipal Culture Foundation.

After this restructuring of municipal executive power, the Municipal Secretariat of Culture of Belo Horizonte, the Municipal Culture Foundation and the Cultural Heritage Directorate, Public Archive and Pampulha Modern Ensemble, in agreement with the Superintendency of IPHAN/MG, initiated the process of restructuring the Management Committee of the Pampulha Modern Ensemble, so that it reflects the new structure of municipal executive power and complies with the recommendations of the World Heritage Committee. This restructuring includes the creation of a seat, within the Ensemble's Management Committee, for the Associations of Inhabitants of the Neighborhoods comprising the Pampulha Modern Ensemble and its Buffer Area, to be consolidated by an Iphan ordinance to be published in the Union's Diário Oficial before the end of December 2017.

(i) include strategic guidelines that can over-arch management and decision making as formal commitments to progress in key areas,

(ii) encompass more clearly the challenges of protecting not just the key buildings in their landscape setting but also the essential characteristics of the traditional neighbourhoods that complement the ensemble,

(iii) adopt a Historic Urban Landscape approach to sustaining traditional neighbourhoods,

(v) include detailed monitoring indicators that relate to the attributes of Outstanding Universal Value,

c) strengthening:

(i) protection and planning controls on the first block of houses beyond the Avenue and facing the Lake in order that they provide an appropriate context for the Ensemble,

(ii) protection in the buffer zone so that land facing and adjoining the lake provides a green backdrop to the water;

In October 2017, the Municipal Secretariat of Culture of Belo Horizonte commissioned a specialized consultancy to develop studies and produce a

document intended to guide the production of the Strategic Management Plan for the Pampulha Modern Ensemble. The main purpose of this was to ensure compatibility between the goals of enhancing touristic and cultural economic activities, translated as Goals of the Strategic Planning of Belo Horizonte, and the goals of the Property's recovery and preservation.

The consultancy will provide subsidies to technical staffs in enhancing the technical guidelines for the protection of the Ensemble and its Buffer Area, as requested above, as well as deal with the following issues:

- a. The network of museums, equipment and cultural spaces
- b. Internationalization and increment of cultural tourism after the site's acknowledgement by UNESCO
- c. Sustainability and funding instruments
- d. Review of monitoring indicators

This work should be completed by July 2018.

Other relevant information on the Pampulha Modern Ensemble

- Heritage Education policies, which had already been promoting activities and projects in Belo Horizonte's Municipal Culture Foundation and in the equipment comprising the Pampulha Modern Ensemble, are being strengthened through the meetings of the Heritage Education Subcommittee, created within the Pampulha Modern Ensemble's Management Committee. The Subcommittee works in close dialogue with the Municipal Secretariat of Education, aiming at the creation of strategies for the inclusion of heritage education contents in school curricula and in special educational projects, as well as promoting capacity-building activities for teachers in the municipal school system.
- In 2017, the Pampulha Coordination of Regional Services has held meetings with representatives of Associations of Inhabitants with the purpose of raising awareness for the importance of heritage preservation and discussing issues that affect the Pampulha Modern Ensemble.
- During the process of restructuring the Pampulha Modern Ensemble's Management Committee, the proposal arose of creating a seat in the Committee

for the municipality of Contagem, where 55% of the Pampulha Basin is located, and which concentrates the most serious issues of irregular sanitation. The purpose of creating this seat is to bring this municipality to participate effectively in cultural heritage management activities.

DINO BARBIERI SQUARE

Historical analysis and
intervention proposal



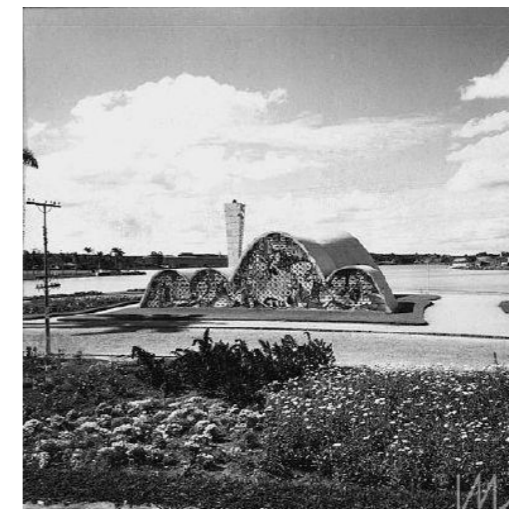
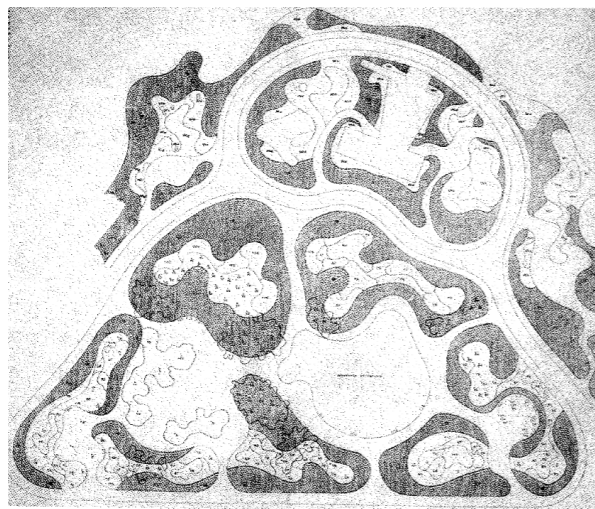
PROJECT FOR DINO BARBIERI SQUARE

Goals

- Restoring Dino Barbieri Square, formerly São Francisco de Assis Square, according to the recommendations expressed by ICOMOS when including the Modern Ensemble of Pampulha in the World Heritage List.
- Reverting the most drastic defacements and harmonizing the gardens in the Square with the plots flanking the church.
- Using as reference the original project and the photographic and documental records found by the survey.

Excerpt from the ICOMOS recommendations regarding the Modern Ensemble of Pampulha

4. *Recommends that the State Party, with the support of ICOMOS if requested, give consideration to the following:*
 - a) *implementing the work set out in the Intervention Plan to:*
 - i) *restore the Yacht Club building and its designed landscape,*
 - ii) *draw up a new design for Dino Barbieri Square to reflect Burle Marx's designs and submit it to the World Heritage Centre for review by the Advisory Bodies,*
 - iii) *once approved, implement the design for Dino Barbieri Square,*
 - iv) *restore the original entrance to the Ballroom,*
 - v) *improve the water quality of the Lake to recreational standards, all within the timescale as set out;*



PROJECT FOR DINO BARBIERI SQUARE

Gardening project organized by R. Burle Marx and H. Mello Barreto – Ficetum and Rose Garden of the Church of Pampulha (1941/1945)

PROJETO DE AJARDINAMENTO ORGANIZADO POR R. BURLE MARX EM COLABORAÇÃO COM O DR. H. L. DE MELLO BARRETO FICETUM E ROSEIRAL DA IGREJA DA PAMPULHA BELLO HORIZONTE ESCALA 1:200

A parte alta do jardim onde já existem algumas mangueiras de porte elevado, será formada por árvores umbrosas com o aproveitamento das figueiras brancas e amarelas, do gênero *Ficus* dando o nome **Ficetum** proposto para o mesmo, em virtude da predominância destas espécies vegetais, sendo também utilizadas outras plantas arbóreas da família botânica das Moráceas, tais como as Embouças, ficando o **roseiral** formado por sclerofilas, entre as quais evoluem as *Dorstenias* ou *Cerepús*. Em certos pontos existirão Quercos e *Cassias* para dar um toque de cor sobressaindo-se um compacto mosaico de Quercos de *Popos de Caldas* ao anexo oposto aos fundos da igreja. Nas partes baixas estão situados os canteiros constituídos por plantas de floração vistosa e de folhagem colorida.

Projeto-se um roseiral que ficará junto da igreja pois a tradição mostra que grande foi a influência da Rosa na religião católica. A Virgem, nas antigas liras "a Maria, era comparada à Rosa, sendo denominada "Rosa entre as mulheres". As chagas de Cristo eram Rosas vermelhas e de alguns gotos do seu sangue notaram rosas de musgo no pé da Cruz. De relação entre a Mãe de Deus, os sofrimentos de Cristo e a Rosa surgiu o Rosário. É símbolo da Virtude e da Humildade a Rosa de Ouro dos Papas. As legiões de Modestino descobriam a Rosa Vermelha que se transformou em Rosa branca, mascararam Rosas dos ouvidos, dos olhos e das bocas dos santos monges e os martires obtiveram o grão de suster perfume de Rosa das suas bocas. O Diabo obteve a Rosa e os peccadores possuídos pelo espírito demônio não podem se acerrar das Rosas. São Cipriano e Santo Agostinho descreveram os jardins celestiais como replantados de Rosas e Dante compôs o Paraíso a uma grande Rosa. Santa Doroteia segundo a lenda, transformou Rosas em péas e na arquitetura das catedrais medievais ela foi motivo magnífico para os rosaceas que os decoram. Atualmente Santo Teresinha de Menino Jesus disse "Je veur posséder mon Ciel à faire du bien sur la terre... Je ferai tomber une pluie de roses."

Neste jardim um espaço reservado para aparelhos esportivos e também será construído uma grande gaiola para abrigo de aves de plumagem de coloração viva e variada.

LISTA DE PLANTAS

- 1 *Ficus perforata* Miq.
- 2 *Ficus calyptroceras* Miq.
- 3 *Ficus dollaria* Mart.
- 4 *Ficus evomphalum* Miq.
- 5 *Ficus gardenianum* Miq.
- 6 *Ficus kunthii* Miq.
- 7 *Ficus maximiliani* Miq.
- 8 *Ficus pohlianus* Miq.
- 9 *Ficus anacardifolia* H. B. K.
- 10 *Ficus enorme* Miq.
- 11 *Ficus glabrata* H. B. K.
- 12 *Ficus elastica* Roxb.
- 13 *Ficus elastica* Roxb. var. *variegata* Hort.
- 14 *Ficus nymphaeifolia* Mill.
- 15 *Ficus eximia* Schott.
- 16 *Ficus parvelli* Veitch.
- 17 *Ficus pandurata* Hance.
- 18 *Ficus religiosa* L.
- 19 *Ficus retusa* L. var. *nitida* Thunb.
- 20 *Ficus populeaster* Desf.
- 21 *Ficus pyriformis* Hook. et Arn.
- 22 *Ficus rubiginosa* Desf.
- 23 *Ficus anthelmintica* Mart.
- 24 *Ficus Roxburghii* Wail.
- 25 *Ficus spec.* (Araxá)
- 26 *Catropia hololeuca* Miq.
- 27 *Catropia palmata* Willd.
- 28 *Catropia pachystachya* Trec.
- 29 *Catropia carbonaria* Mart.
- 30 *Catropia adenopus* Mart.
- 31 *Tibouchina mutabilis* (Vell.) Cogn.
- 32 *Tibouchina sellowiana* (Cham.) Cogn.
- 33 *Tibouchina granulosa* (Desr.) Cogn.
- 34 *Tibouchina granulosa* (Desr.) Cogn. (rosa)



LISTAS DAS ROSEIRAS

- a Gabrielle privat
- b Rofstut
- c Baby chateaux
- d Dagmar spaet
- e Helgoland
- f Roseneffe
- g Orange triumph
- h Chamois
- i Lady gay (Wich)

- 41 *Dorstenia bryoniaefolia* Mart.
- 42 *Solanum vieteifolium* Schott
- 43 *Paspalum notatum* Fillegge
- 44 *Alpinia speciosa* (Wendl.) K. Schum
- 45 *Austromeria caryophylla* Jacq.
- 46 *Anthurium eichleri* Engt.
- 47 *Anthurium maximiliani* Schott
- 48 *Anthurium nymphaeifolium* C. Kota et Bouche
- 49 *Calathea cylindrica* K. Schum
- 50 *Clerodendron fallax* Lindl.
- 51 *Costus spiralis* Roscoe
- 52 *Dichorisandra thyrsiflora* Mikán
- 53 *Dieffenbachia picta* Schott
- 54 *Heliconia angustifolia* Hook
- 55 *Heliconia bihai* Hook
- 56 *Heliconia episcopalis* Vell.
- 57 *Heliconia farinosa* Raddi
- 58 *Heliconia psittacorum* L.
- 59 *Jacobinia chrysocephala* Bert. et Hook
- 60 *Monstera pertusa*
- 61 *Musa coccinea* Roxb.
- 62 *Musa rosacea* Jacq.
- 63 *Pachystachya coccinea* Nees
- 64 *Panicum latissimum* Mikán
- 65 *Phylodendron bipinnatifidum* Schott
- 66 *Phylodendron giganteum* Schott
- 67 *Phylodendron gloriosum* Andre
- 68 *Phylodendron martianum* Engl.
- 69 *Privopodium crassifolium* L.
- 70 *Paralimnia oxalifolia* L.
- 71 *Scindapsus aureus* Engl.
- 72 *Tetrapanax papyrifera* C. Koch
- 73 *Wedelia paludosa* D.C. var. *vialis* D.C.
- 74 *Xanthosoma violaceum* Schott
- 75 *Zebraia pendula* Schott
- 76 *Alocasia macrorrhiza* Schott
- 77 *Alsophila fecana* C. Christ.
- 78 *Alsophila paleolata* Mart.
- 79 *Alsophila villosa* (H. B. Willd.) Desv.
- 80 *Cyathea scharschii* Mart.
- 81 *Cyathea gardneri* Hook.
- 82 *Dicksonia sellowiana* Hook.
- 83 *Didymochlaena truncatula* J. Sm.
- 84 *Hemitelia capensis* R. Br.
- 85 *Roseiral*
- 86 *Rhoeo discolor* Hance
- 87 *Sansevieria zeylanica* Willd. var. *Laurentii* Hort.
- 88 *Hemerocallis flava*
- 89 *Hemerocallis fulva* L. var. *Kwanso* Hort.
- 90 *Iresine herbistii* Hook.
- 91 *Iresine herbistii* Hook. var. *aureireticulata* Hort.
- 92 *Poa trivialis* L. var. *variegata* Hort.
- 93 *Stenotaphrum americanum* Schrank var. *variegatum* Hort.
- 94 *Cassia bicapsularis* L.
- 95 *Hypoestes sanguinolenta* Hook.
- 96 *Plumbago capensis* Thunb.

LISTA DAS AVES VISTOSAS

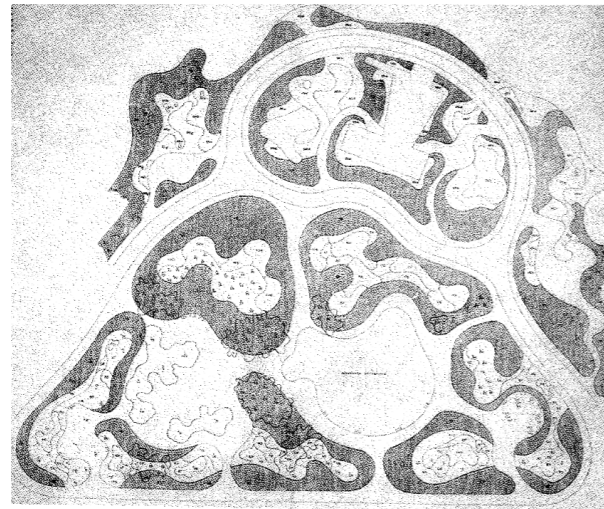
- 1 *Sarcophagus papa* (Linnaeus) - urubu-rei
- 2 *Harpia harpyia* (Linnaeus) - Gavião real
- 3 *Spizaetus ornatus* (Daudin) - Gavião de penacho
- 4 *Crax fasciolata* Spix - Mutum
- 5 *Crax blumenbachii* Spix - Mutum
- 6 *Penelope obscura bronzina* Hellmayr - Jacu guassu
- 7 *Penelope jacupemba* Spix - Jacupemba
- 8 *Ortalis araucana araucana* Spix - Aracá
- 9 *Pipile jacutinga* (Spix) - Jacutinga
- 10 *Ocotophorus capueira capueira* (Spix) - Capoeira - Uru
- 11 *Anodorthynchus hyacinthinus* (Latham) - Arara azul
- 12 *Ara macao* (Linnaeus) - Arara vermelha
- 13 *Ara chloroptera* Gray - Arara verde
- 14 *Ara ararauna* (Linnaeus) - Canindé
- 15 *Ara severa* (Linnaeus) - Maracanã guassu
- 16 *Pittacara leucophthalma leucophthalma* (Mueller) - Araguari
- 17 *Propyrrhura maracana* (Vieillot) - Maracanã
- 18 *Aratinga jandaya* (Gmelin) - Jandaia
- 19 *Aratinga auricapilla aurifrons* Spix - Aratinga
- 20 *Aratinga cactorum cactorum* (Kuhl) - Aratinga
- 21 *Aratinga aurea aurea* (Gmelin) - Piriquito-rei
- 22 *Pyrhura cruentata* (Wied) - Tiriba
- 23 *Forpus passerinus vividus* (Ridgway)
- 24 *Tirica chirri* (Vieillot) - Periquito
- 25 *Amazona farinosa farinosa* (Boddart) - Moleiro
- 26 *Amazona aestiva aestiva* (Linnaeus) - Papagaio verdadeiro
- 27 *Pionus maximiliani sly* (Souancé) - Maitaca
- 28 *Tricaria ralaticacea* (Spix) - Sabiá
- 29 *Picopopsitta citeata* (Sæepoli) - Periquito rei
- 30 *Urochroa wedi* Allen - Periquito
- 31 *Ramphastos toco* Mueller - Tucano assu

Original design. Source: Lana, Ricardo Samuel de. *Arquitetos da Paisagem, Década de 1940* – blueprint n. 4.

PROJECT FOR DINO BARBIERI SQUARE

Descriptive Memorandum

GARDENING PROJECT ORGANIZED BY R. BURLE MARX IN COLLABORATION WITH DR. H. L. DE MELLO BARRETO FICETUM AND ROSE GARDEN OF THE CHURCH OF PAMPULHA, BELO HORIZONTE - SCALE 1:200



The upper part of the garden, where there are already a few large mango trees, will consist of umbrageous trees, using fig trees and gameleiras, of the Ficus genus, hence the name Ficetum chosen for said space, by virtue of the predominance of these vegetal species. Other arboreal plants of the botanic family Maraceas will also be used, such as the Cecropias, and the sous bois will be formed by sciadophylla, among which Dorstanias or Carapios will predominate.

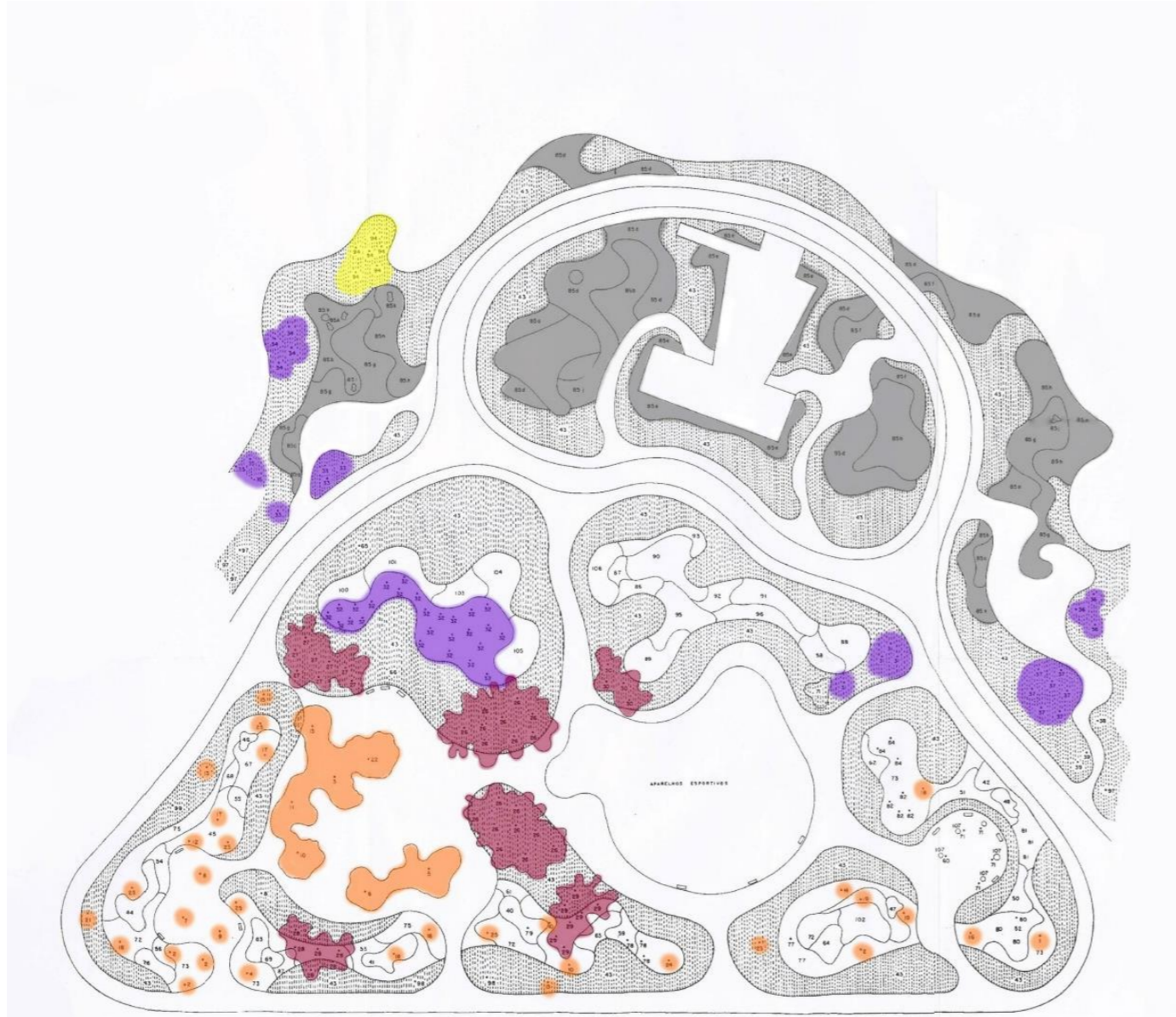
At certain points there will be Quaresmeiras and Cassias, for a note of colour, with particular prominence to a massive compact of Quaresma de Poços de Caldas at the slope opposite the back of the church. At the lower

parts there will be plots comprised of plants with slightly flowers and colourful foliage.

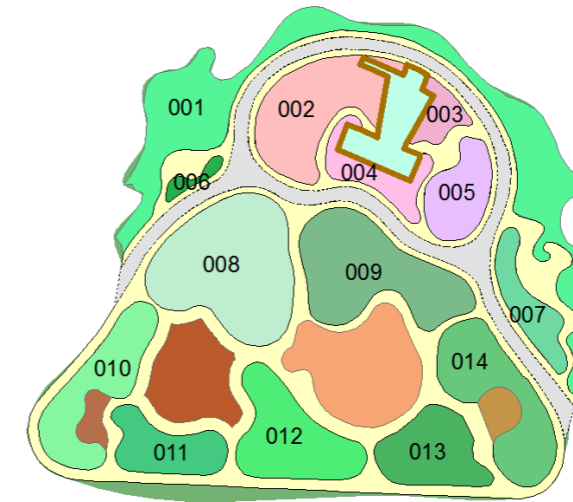
A rose garden has been envisioned near the church, since tradition shows the great influence of the Rose in Catholic religion. The Virgin, in ancient hymns to Mary, was compared to the Rose, being called "Rose among women". The wounds of Christ were red Roses, and from a few drops of his blood rose trees grew from the moss at the feet of the Cross. From the relation between the Mother of God, the sufferings of Christ and the Rose came the Rose Garden. The Golden Rose of Popes is a symbol of Virtue and Humility. The tears of Magdalene uncovered the Red Rose that was transformed into a White Rose. Roses bloomed from the ears, eyes and mouths of monk saints, and martyrs have obtained the grace of exhaling the scent of Roses from their mouths. The Devil abhors the Rose, and persons possessed by demonic spirits cannot come near Rose Trees. Saint Cyprian and Saint Augustine described celestial gardens as filled with Rose Trees, and Dante compared Paradise to a great Rose. Saint Dorothea, according to legend, transformed Roses into bread, and in the architecture of Medieval cathedrals it was a magnificent motif for the rose windows that decorate them. Also recently, Saint Theresa of the Boy Jesus said "Je veux passer mon Ciel à faire du bien sur la terre... Je ferai tomber une pluie de roses".

PROJECT FOR DINO BARBIERI SQUARE

Original design – Analysis



Identification of vegetal groups – IPHAN 2017



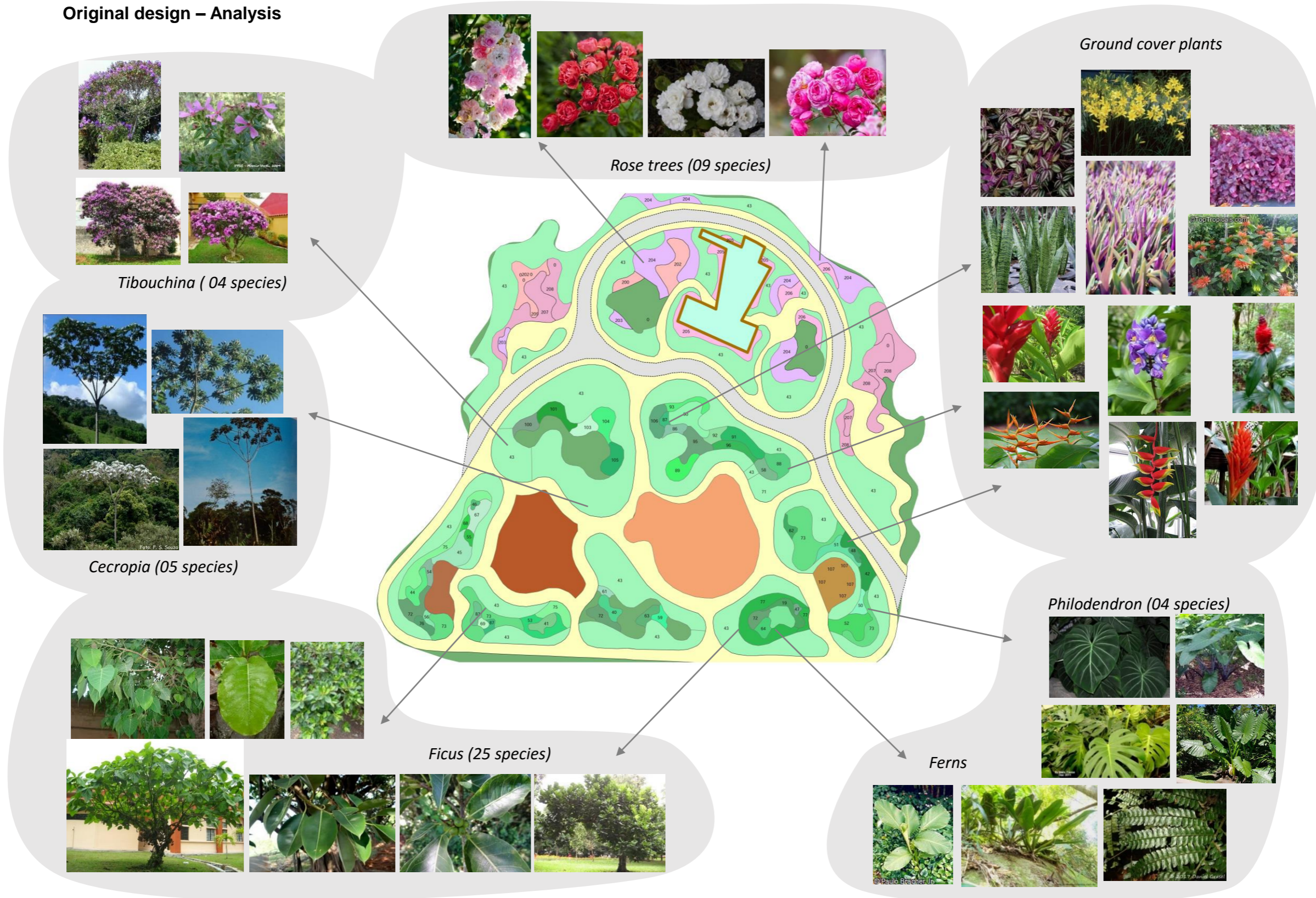
Plots at São Francisco de Assis Square –
Analysis of original design – SRBM 2017

The original gardening design comprises the sides of the Church of São Francisco de Assis, the banks of Pampulha Pond and the São Francisco de Assis Square (now Dino Barbieri Square). The memorandum mentions the acknowledgement of the existing mango trees and the creation of a “Ficetum” forming a great shaded area throughout the south side, the upper part of the square (plots 10 to 14). As a counterpoint, the lower part consists of plots with slightly ground cover plants and foliages, forming the background nearer the Church (plots 8 and 9). The sides of the Church have received various species of rose trees (plots 2 to 5).

The original design presents a great diversity of plant species, with about one hundred and twenty species described and at least one hundred documented. The Ficetum involves the insertion of 40 individuals of 25 different species of Ficus, in addition to the mango trees.

PROJECT FOR DINO BARBIERI SQUARE

Original design – Analysis



PROJECT FOR DINO BARBIERI SQUARE

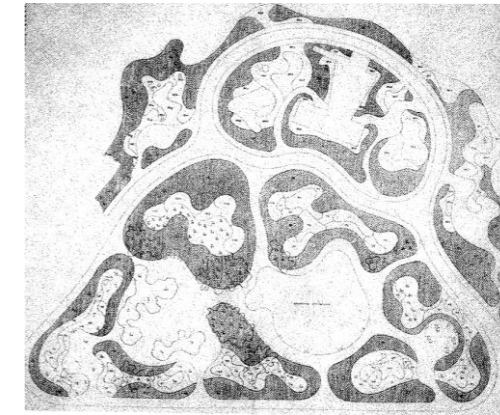
Original design
Implementation



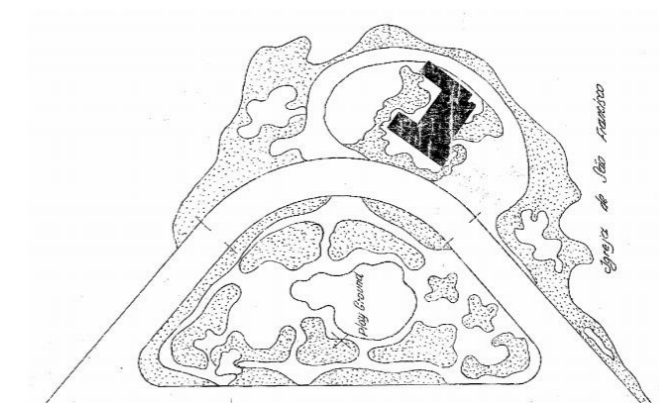
Aerial view c. 1950. Source: Estado de Minas newspaper, available in www.em.com.br

The photograph above records the implementation of the Square according to the original design, with small adaptations: the simplification in the outline of the vehicle thoroughfare (which surrounds the current Square), the creation of a circle in the space destined for the Ficetum and the subdivision of a plot.

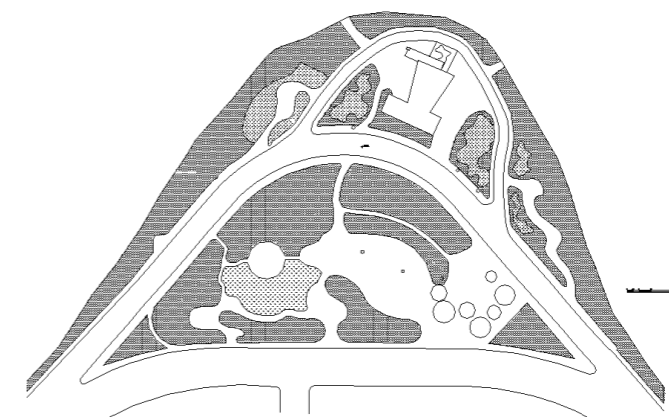
In the original sketch, the square's paved area is distributed in two large areas of about 1000m², and four smaller areas, two at the east and west of the south sector and two at the east and west of the north sector, measuring approximately 200m².



Original design, Roberto Burle Marx and Henrique M. Barreto, c. 1941-1945.



Cadastral survey, Belo Horizonte City Hall, 1959.



Original Implementation Sketch on aerial photograph. Felipe Perdigão, IPHAN, 2017.

PROJECT FOR DINO BARBIERI SQUARE

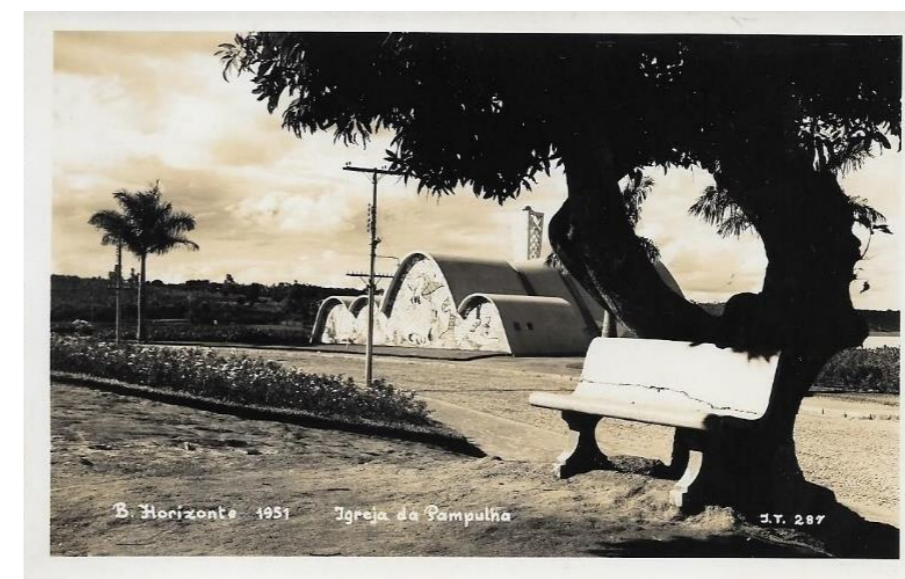
Iconographic Records of Landscaping

Identification of ground cover plants at the lower part of the Square



Photo: Marcel Gauterhot (c.1960) – Instituto Moreira Sales collection

The photographs and postcards show the plots with colourful ground cover plants and slightly foliage, in various moments, between the 1940s and 1960s.



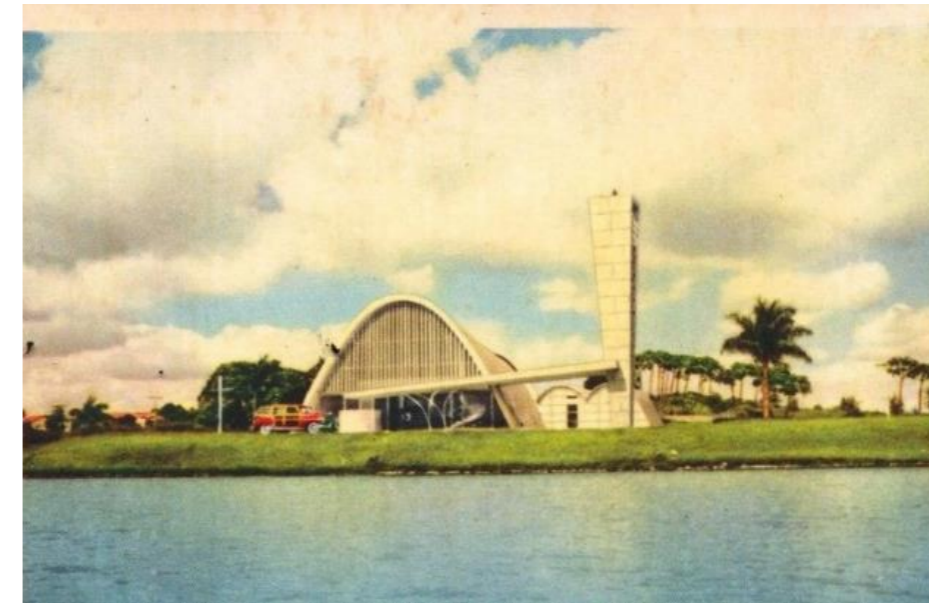
PROJECT FOR DINO BARBIERI SQUARE

Iconographic Records of Landscaping Identification of Cecropias and mango trees



Photo: Marcel Gauterhot (c.1960) – Instituto Moreira Sales.

The photographs capturing the Church's main façade show, in the background, the presence of mango trees, as well as the insertion of Cecropias, as envisioned in the original landscaping design.



Postcard – 1951.



Anonymous photograph – 1952.

PROJETO DA PRAÇA DINO BARBIERI

Iconographic Records of Landscaping



The records demonstrate the value of integration between the plots and the architecture, and the appropriation of these by the visitors.

- Postcards - <http://colecões.mercadolivre.com.br/cartoes-postais/belo-horizonte>



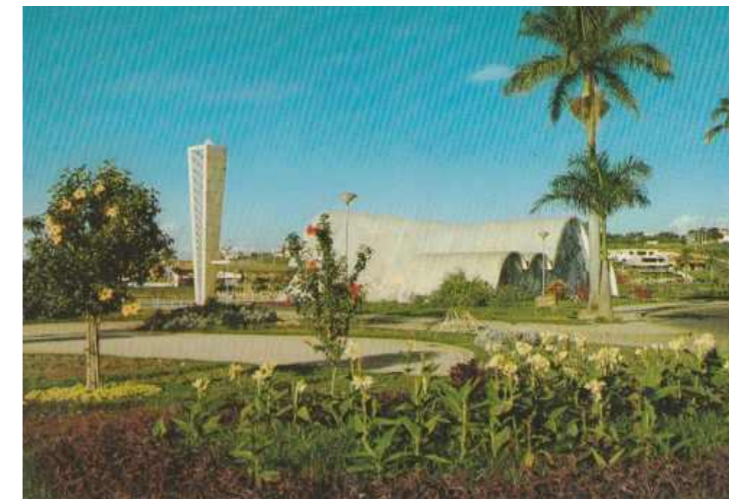
PROJECT FOR DINO BARBIERI SQUARE

Iconographic Records of Landscaping



The compositions with colourful foliage are prominent in these postcards, taking on the same degree of importance as the building.

- Postcards – available in <http://colecões.mercadolivre.com.br/cartoes-postais/belo-horizonte>



PROJECT FOR DINO BARBIERI SQUARE

Evolution



- 1950s – photograph recording the initial implementation of the original design.

The implementation complies with the project, respecting the outlines of plots, with a few adaptations.

Note the plots formed by ground cover plants and foliages, at the sides of the church and on the slope behind it.

At the elevated part of the Square, in addition to the existing mango trees, small seedlings indicate the planting of the *Ficetum*, the *Cecropia* and the *Tibouchina*.



- 1970s – cession of space to a private restaurant, when the square was fenced and the outlines and landscaping were defaced.

The restaurant implemented a large rectangular building at the centre and a circular-shaped annex.

Alteration of the sinuous paths and suppression of the plots at the slope behind the church.

The projects and reform of the Square, initiated in the 1970s and resumed, without any character of restorative intervention, in the 1990s and 2010s, caused great losses to the original features of the square's outline and vegetation.

PROJECT FOR DINO BARBIERI SQUARE

Evolution



- 2000s – the Square is retaken by the City Hall and reopened as a public space.

The project for the reform adopted geometric outlines and envisioned a circular space at the centre.

Only the circular building was reused for the installation of a cafeteria to be used by visitors.

Subterranean restrooms were also built.



- Project implemented in 2015.

This new intervention reinforced the radial geometry and the spatial centrality of the previous project, significantly increasing the paved area.

With its central space occupying circa 25% of the Square's area, a ramp was created for universal accessibility, taking up another 20%, and occupying the slope which is the background to the church's façade.

The intervention added pavements and arboreal vegetal specimens disregarding the original design.

PROJECT FOR DINO BARBIERI SQUARE

Diagnosis – synthesis of identified defacements

1 – USE OF STRAIGHT AND GEOMETRIC LINES – defacement of the design's original concept.

2 – EMPHASIS IN CENTRALITY – defacement of the organic quality present in the original design.

3 – SUPPRESSION OF THE ROSE GARDEN – impoverishment and defacement of original project.

4 – CREATION OF RAMPS OVER A PLOT, CUTTING THE SLOPE – a constructive element of active design – conflict with the church.



5 – INTRODUCTION OF TREES AT THE LOWER PART – defacement of the original volumetry (arboreal mass at the upper part and ground cover plants at the lower part).

6 – SUPPRESSION OF GROUND COVER PLANTS – simplification of landscaping.

7 – SUPPRESSION OF UNDERBRUSH

11 – SUPPRESSION OF THE FICUS, EMBAÚBAS, QUARESMEIRAS AND CASSIAS – decrease in the number of species.

10 – FLOORINGS AND BENCHES – materials and design out of context, unrelated to the gardens of the Church – loss of formal unity.

9 – CONSTRUCTIONS AT THE SQUARE – cafeteria and water tank – visual interference.

8 – INCREASE IN MANGO TREES

PROJECT FOR DINO BARBIERI SQUARE

Proposal – new design taking advantage of the current topography and recovery of features in the original design.

1 – RECOVERY OF THE SINUOUS OUTLINES, continuing the outlines of existing plots.

2 – RECOVERY OF THE ORGANIC AND ASYMETRICAL SPACE, with several focal points.

3 – REINTRODUCTION OF ROSE TREES in the plots near the Church.

4 – DEMOLITION OF THE RAMPS and recovery of gardened area.



5 – SUPPRESSION OF TREES that were planted at random.

6 – RECOVERY OF THE PLOTS WITH GROUND COVER PLANTS AND COLORFUL FOLIAGE at the lower part of the square.

7 – REINTRODUCTION OF THE UNDERBRUSH with philodendrons/heliconias/ferns.

11 – RECOMPOSITION OF FICETUM AND REINTRODUCTION OF THE OTHER SPECIES, reinforcing the green mass at the elevated part of the Square.

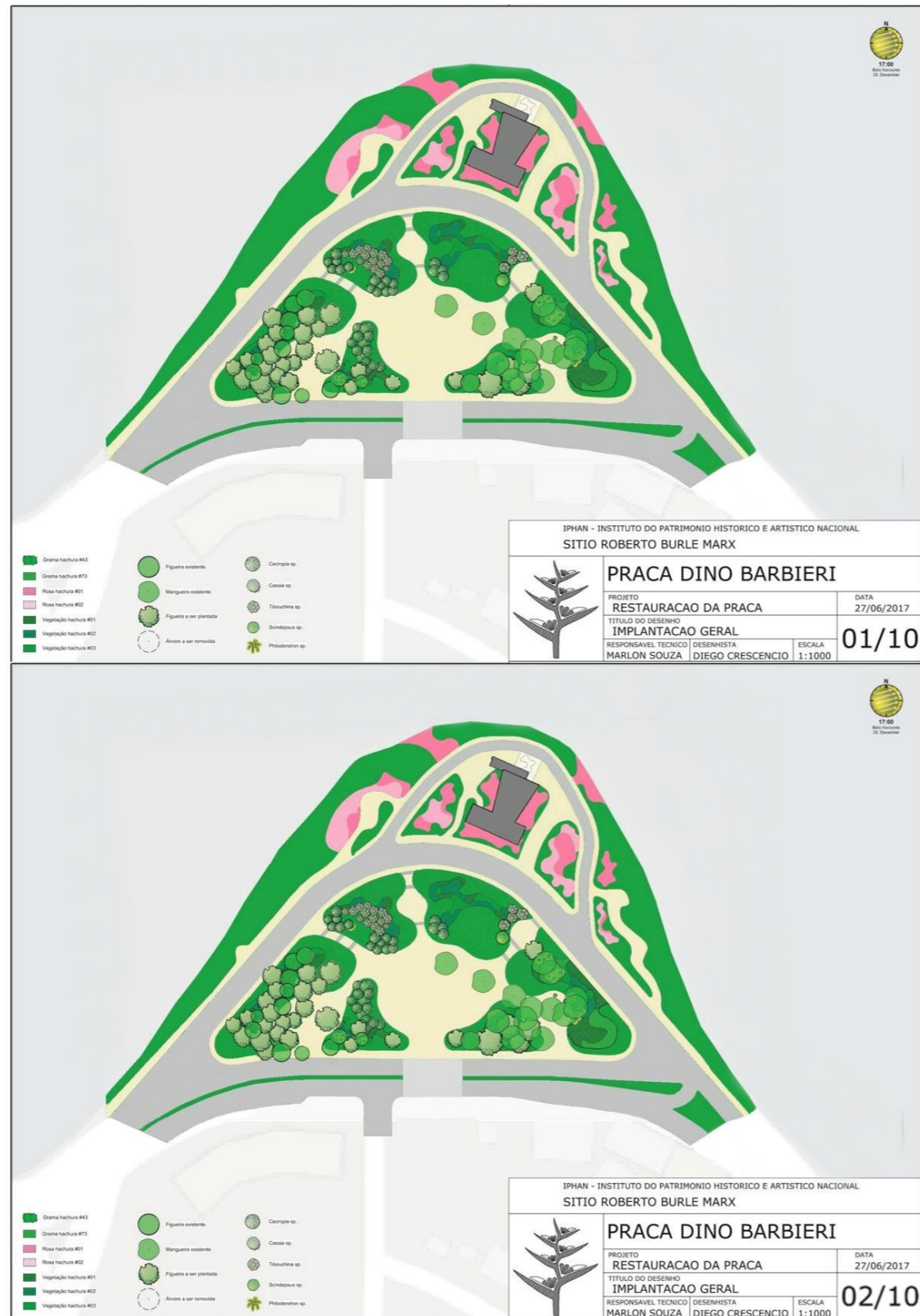
10 – RECOVERY OF PORTUGUESE STONES at the outer pavement and insertion of contextualized benches and furniture.

9 – DEMOLITION OF BUILDINGS – cafeteria, water tank and subterranean restrooms – and recovery of gardened areas.

8 – CONTROL OF MANGO TREES, suppression of specimens for ventilation and insolation.

PROJECT FOR DINO BARBIERI SQUARE

Landscaping design



- General implementation, with the reintroduction of arboreal and bush species and rose ground covers.

A composition with at least one hundred and eighty single vegetal individuals is envisioned, distributed among trees and herbaceous species belonging to at least seven families.

The garden thus recovers the great vegetal diversity proposed and the envisioned sectorization, recovering the shaded area at the upper part and the liberation of the slope at the back of the Church.



Some of the species to be reintroduced

- Implementation of arboreal species: Ficus, Cecropia (embaúbas) Tibouchina (quaresmeiras) and Cassia.

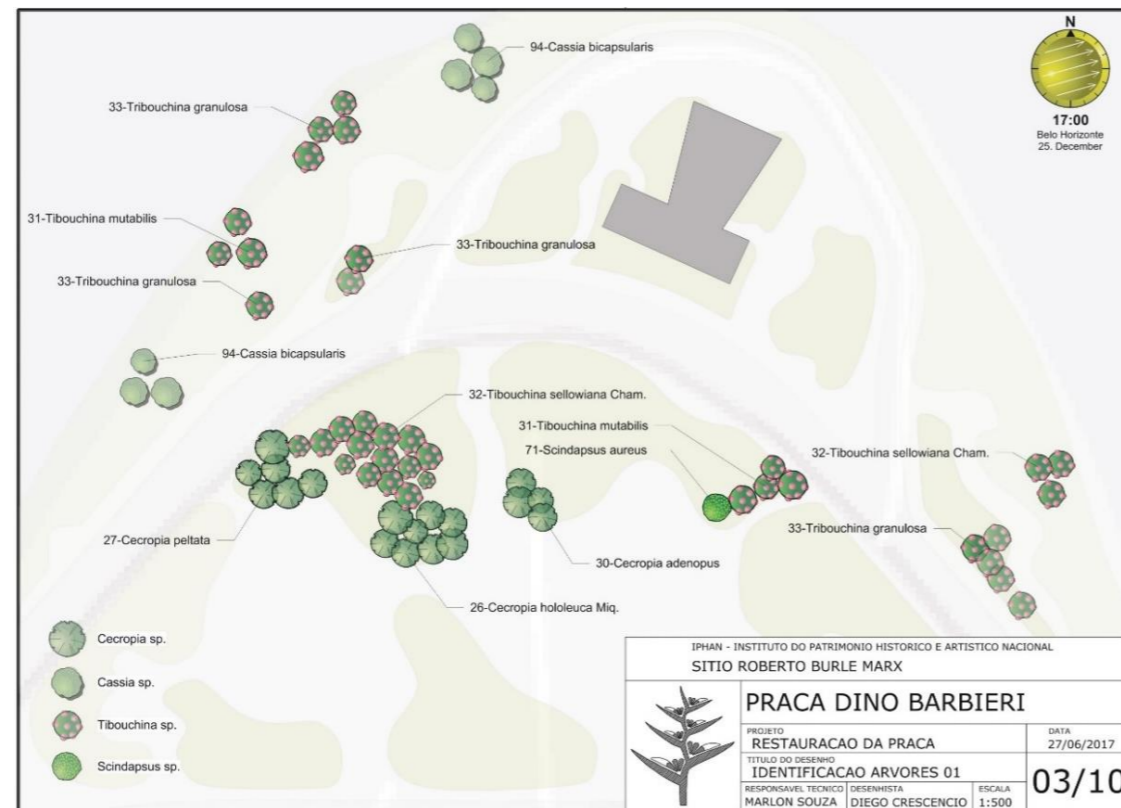
A basic study verifying only the shaded area of the Ficetum reveals that the Southeast sector retains a good area of shade according to the original concept, while the Southwest sector suffered with major removal of Ficus trees.



Cecropia

PROJECT FOR DINO BARBIERI SQUARE

Landscaping design



- Location of the arboreal individuals to be reintroduced, from the Cecropia species, known by its thin silhouette and silver foliage, as well as individuals from the Cassia family, with its yellow flowers, and Tibouchina, with its long period of purple florescence.



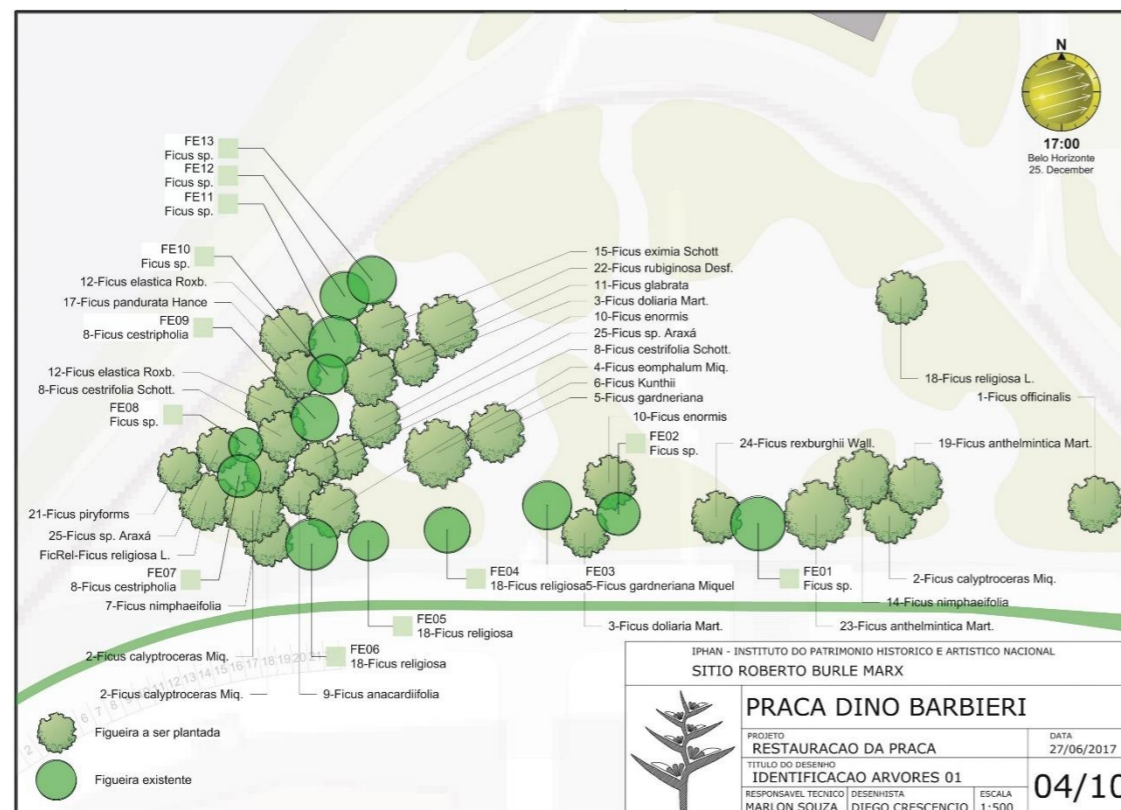
Cassia



Tibouchina

- Recovery of the Ficetum, with the reinsertion of specimens also at the eastern part of the square, a place now completely taken by mango trees.

The survey indicated the existence of only 25% of the amount of Ficus envisioned in the original design. About fourteen species have a single representative at the Square.



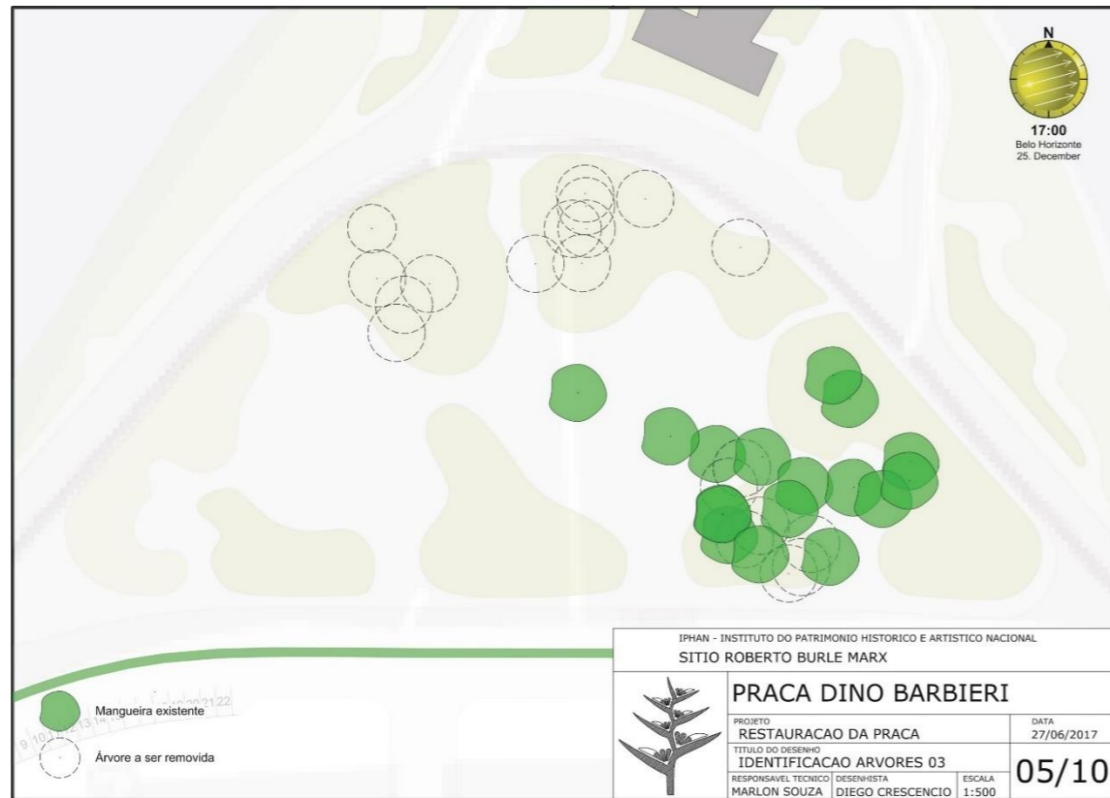
Ficus pandurata



Ficus rexburghii

PROJECT FOR DINO BARBIERI SQUARE

Landscaping design



- Indication of the suppression of arboreal specimens inadequately inserted at the plots that will receive low ground cover plants (north face) and of mango trees, for the reinsertion of Ficus and the opening of insolation clearings.



Mangifera indica



- Recomposition of plots and of the underbrush, with the great diversity of species envisioned in the original design.



Hemerocalis



Monstera



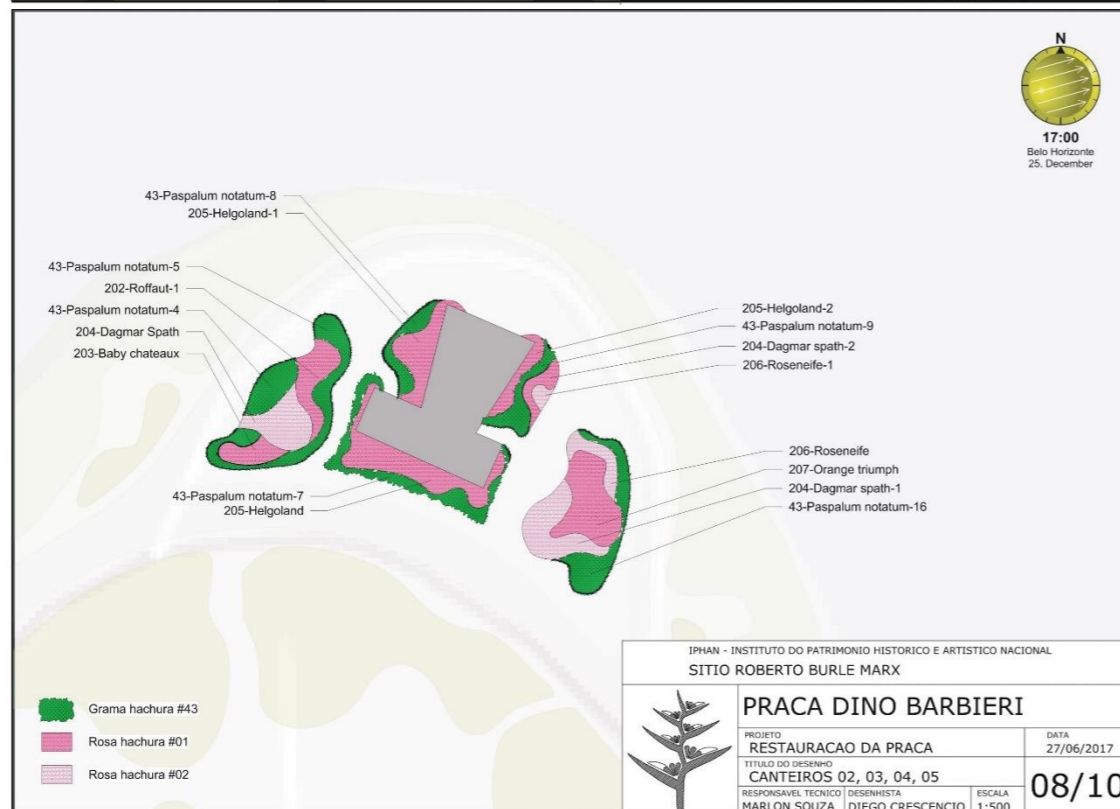
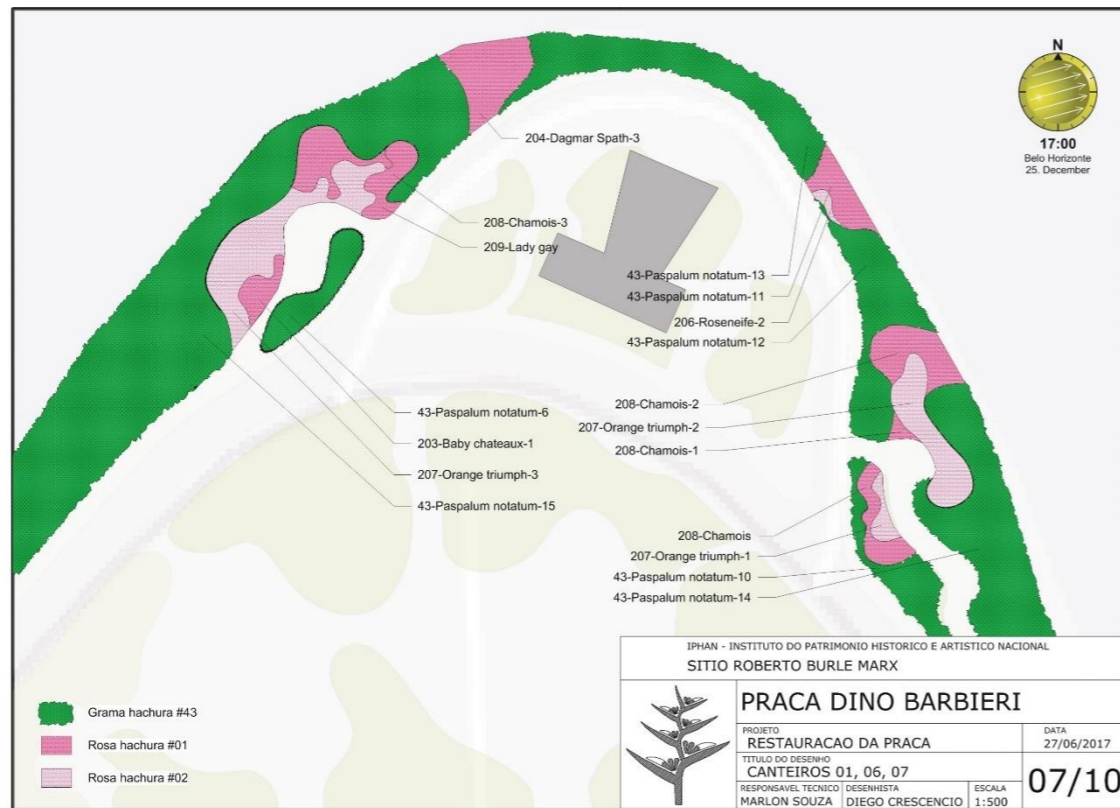
Sanseveria



Zebrina

PROJECT FOR DINO BARBIERI SQUARE

Landscaping design



- Reintroduction of the rose gardens indicated in the original design: 1 – near the banks of the Pond, in plots interpolated with large lawns and 2 – at the plots flanking the church, with few lawns.

The rose tree is emphasized in the project's memorandum, with references to the multiple symbols and relations between roses and the Catholic religion, and for this reason the maximum preservation of this area is crucial.



Helgoland



Lady gay



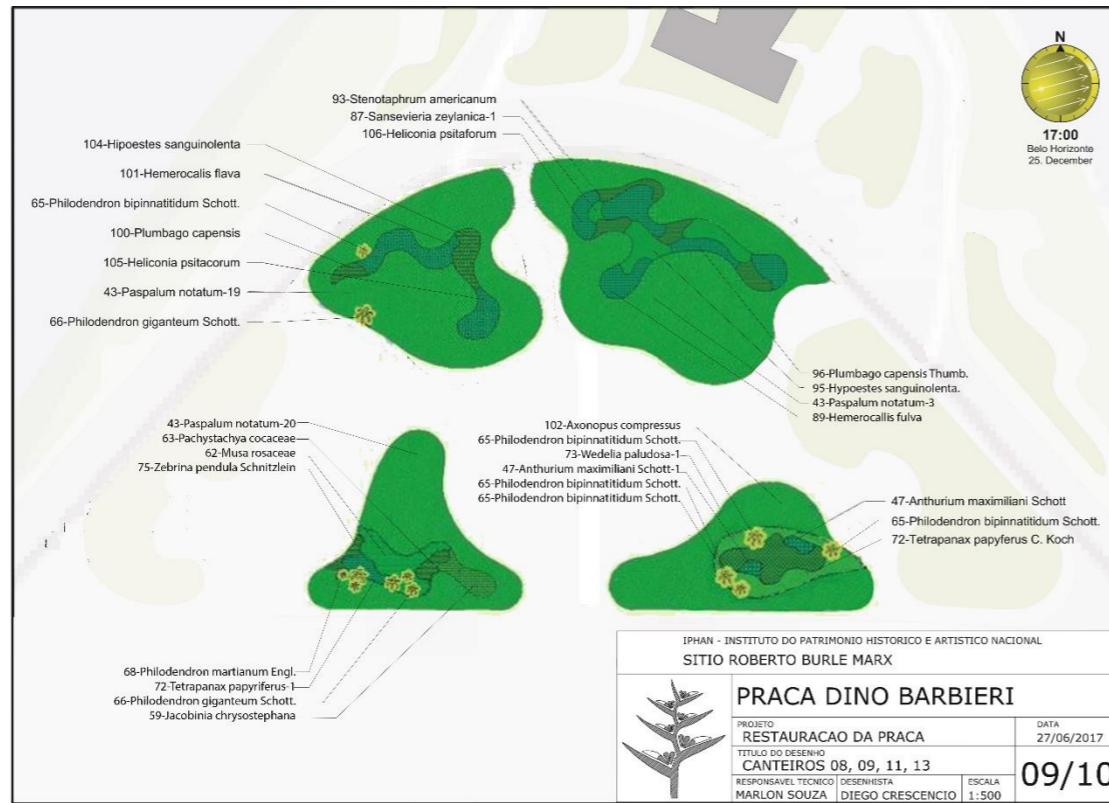
Dagmar spath



Orange triumph

PROJECT FOR DINO BARBIERI SQUARE

Landscaping design



- Distribution of ground cover plants and foliages at the plots with flowers in the shades of yellow, red and blue.



Hemerocallis



Plumbago



Iresine



Heliconia psitacorum

- Distribution of the species that will compose the underbrush with different species of anthurium, heliconias and ferns.



Alocasia



Didymochlaena



Philodendrum



Musa coccinea

An aerial photograph of a coastal area, likely in Minas Gerais, Brazil. The image shows a large, irregularly shaped square area, possibly a park or a public square, situated near a river or coastline. The square is surrounded by greenery and some buildings. The overall scene is a mix of natural and urban elements.

DINO BARBIERI SQUARE

INTERVENTION PROPOSAL

Development

RESEARCH AND PROPOSAL

State Superintendency of IPHAN in Minas Gerais

Architect

Ulisses Vanucci Lins

Intern

Felipe Perdigão

Technical Coordination

Daniela Lorena Fagundes de Castro

Superintendent of IPHAN-MG

Célia Corsino

LANDSCAPING DESIGN

Sítio Roberto Burle Marx / SRBM – IPHAN

Technical Division

Marlon Souza

Diego Crescêncio

Head of SRBM – IPHAN

Cláudia Storino

NATIONAL HISTORIC AND ARTISTIC HERITAGE INSTITUTE - IPHAN