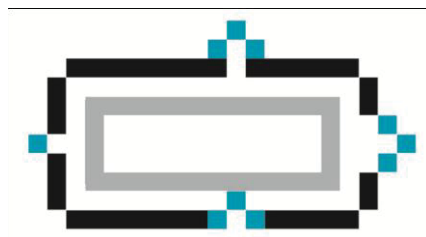


Islamic Republic of Iran
Iranian Cultural Heritage, Handicrafts & Tourism Organization
ICHHTO



State of Conservation report of Meidan Emam Isfahan
World Heritage Site

UNESCO
World Heritage Convention
Tehran 2015

In the name of God

Responses to the statements of the decision 37 COM 7B.62

a) Submit to the World Heritage Centre, the detailed documentation on the plan and routing of Metro Line 2, together with a comprehensive Heritage Impact Assessment in conformity with the ICOMOS Guidelines on Heritage Impact Assessments

A documentation and an HIA report have been carried out by Isfahan Urban Railway Organization with the supervision of ICHHTO. A PDF file containing detailed information on the plan and routing of Metro Line 2, together with a comprehensive Heritage Impact Assessment and a file with required drawings has been attached to this document in order to be assessed by WHC and the advisory bodies.

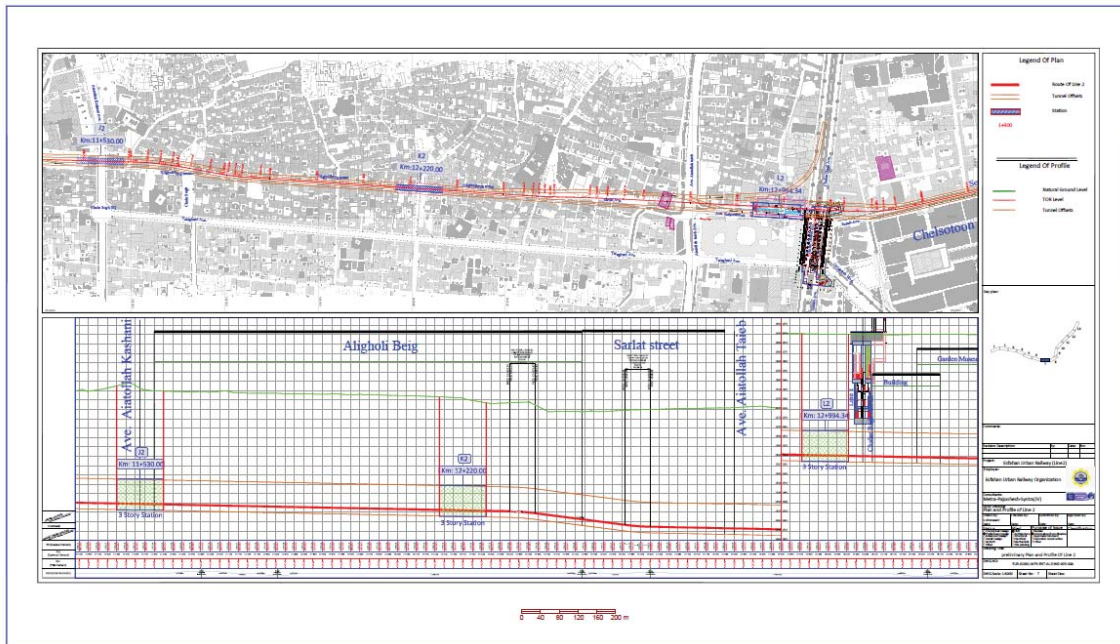


Figure 1. Drawings of the metro line 2

b) Immediately finalize the remaining demolition works at Jahan Nama building and officially inform the World Heritage Committee of its completion,

Demolition works on the Jahan Nama building has been accomplished according to the decisions made by WHC and the advisory bodies in order to decrease the height to the acceptable level.





Figure 2. Demolition of the upper stories of Jahan nama building

5. Requests the State Party to keep the World Heritage Centre informed about any construction and emerging major development proposals in Esfahan in line with paragraph 172 of the Operational Guidelines;

ICHHTO would like to ensure that any construction and emerging major development proposals in Esfahan will be informed as soon as possible.

6. Encourages the State Party to submit to the World Heritage Centre the proposal for the boundaries of the property and the modification of the buffer zone, in accordance to Paragraph 164 of the Operational Guidelines, as well as the statement of Outstanding Universal Value, for review by the Advisory Bodies and approval by the Committee;

Since Meidan Emam Isfahan was inscribed on the World Heritage List almost half a century ago, some alterations on the boundaries of the property is necessary. For this purpose a new buffer zone prepared and is, according to the line 165 of the Operational guideline, in the process of preparing for submission.

7. Takes note also encourages of the development of the Conservation Management Plan for the property and the State Party to finalize its review process by considering the following: a) integrate the approved Statement of Outstanding Universal of the property and the definition of the boundaries of the property and its buffer zone and identify provisions for its protection,

b) Carry out an assessment study of the vulnerability of the property against disasters such as earthquake or fire and develop a systematic strategy on risk preparedness,

c) Broadly disseminate the finalized Management Plan among all stakeholders and general public,

d) Ensure that the Management Plan becomes part of a larger strategic vision for urban development and conservation of Esfahan and integrate it with the Esfahan Master Plan and municipal by-laws,

e) Submit the finalized version to the World Heritage Centre, for comments by the Advisory Bodies;

A comprehensive conservation and management plan for the world heritage property of Meidan Emam has been developed by ICHHTO. This document seeks minor modification and alteration in order to be integrated with the proposed boundaries of the world heritage property. The

comprehensive conservation and management plan will be annexed to the Master Plan of Isfahan after adoption by the Ministry of Housing and the other relevant parties. However, this document may then be publicized amongst the stakeholders and general public and it will be sent to the WHC as soon as it was finalized and translated.

- **Other relevant conservation works carried out by Meidan Emam Base**

- Stabilization of the columned porch of Ali Gapou



Figure 3. Stabilization of the porch

- Stabilization of the buttresses of Ali Gapou ceiling



Figure 4. Stabilization of the buttresses

- Stabilization of the Shir-e-Sar and sequential decorations related to columned porch of Ali Gapou Edifice

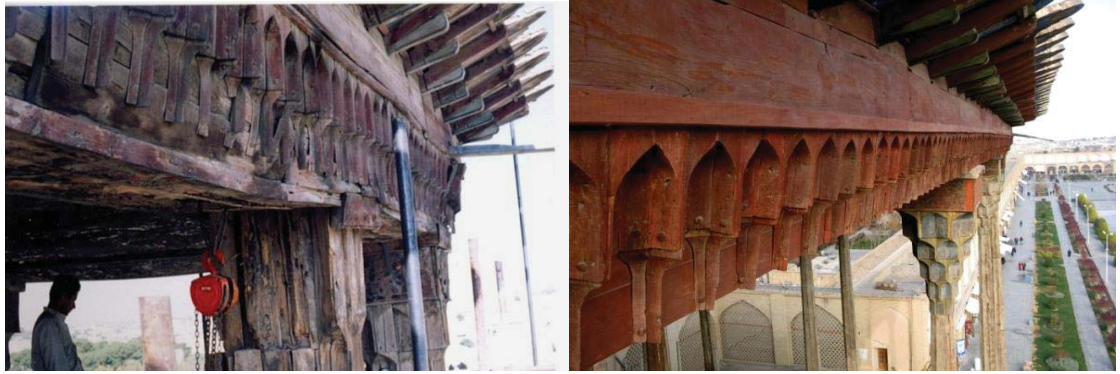


Figure 5. Stabilization of the sequential decorations

- Stabilization of the ceiling's wooden decoration in columned porch, Ali Gapou
- Stabilization of the painting decoration in Ali Gapou Edifice
- Stabilization of the dome's decorations, Emam Mosque



Figure 6. Stabilization of the dome's decorations

- Restoration and removing the Emam Mosque's threshold
- Stabilization of the painting decorations in columned porch's ceiling, Ali Gapou
- Stabilization of the decorations of the 2nd floor booths of the square
- Stabilization of the decoration of Qeysarieh's Vestibule
- Repairs on the door of Emam Mosque