

Location in Kanto / Tokai Region

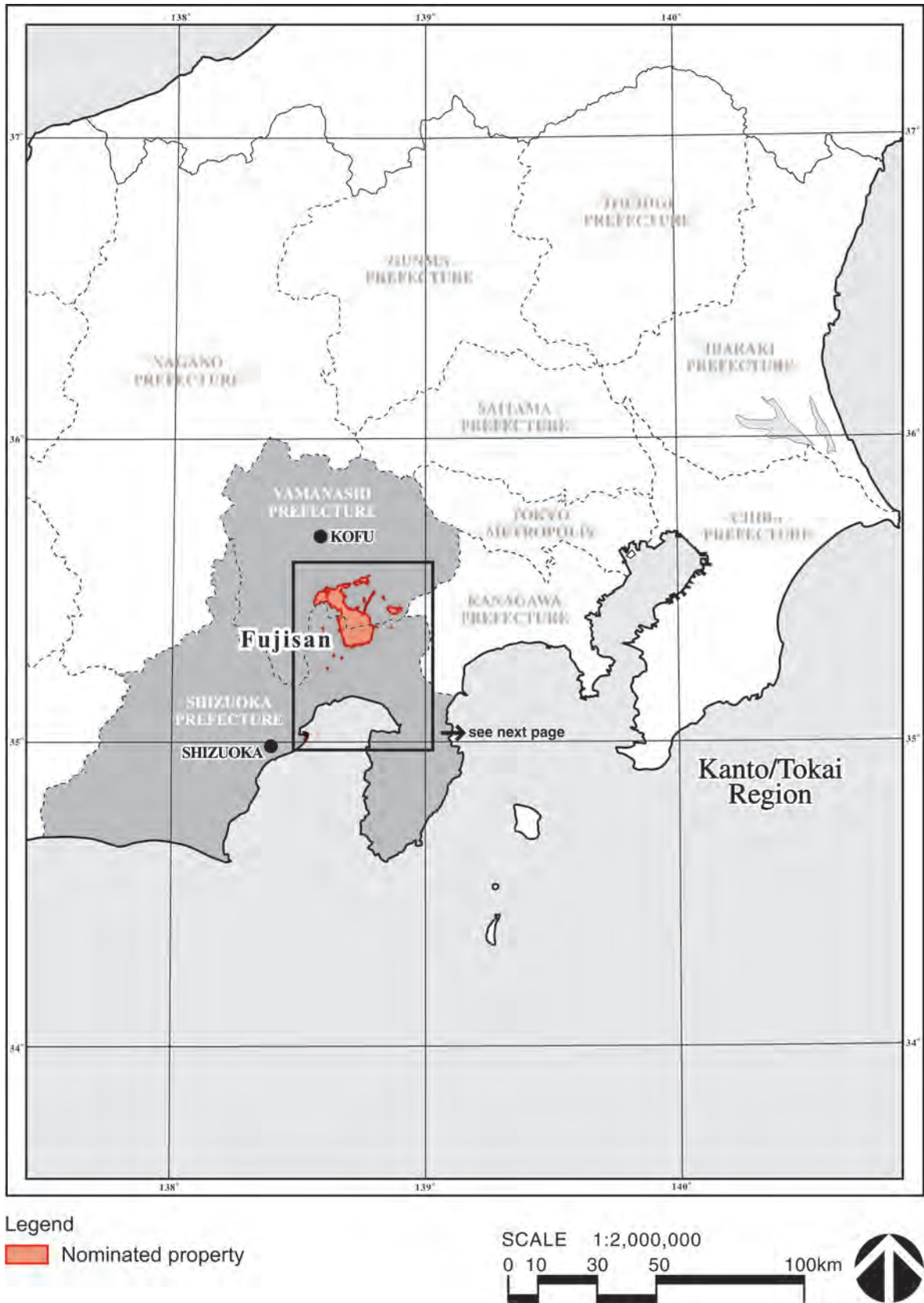


Figure 1-3 Map indicating the location in Kanto / Tokai Region © PREC Institute Inc.

Extent of the Nominated Properties and its Buffer Zone

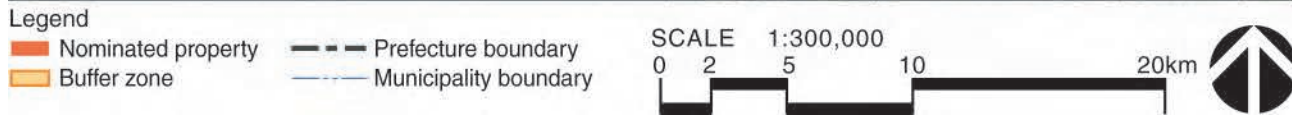
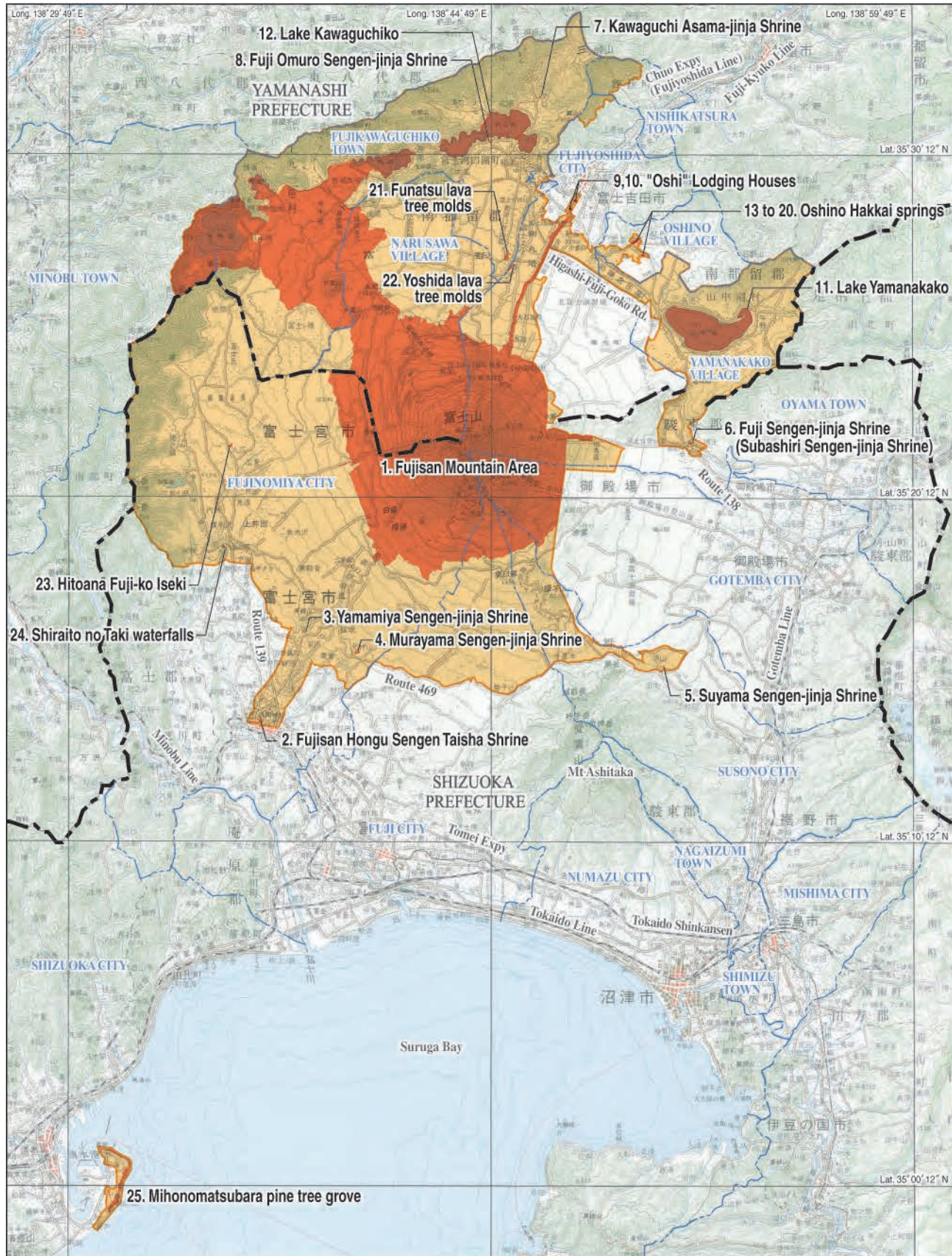
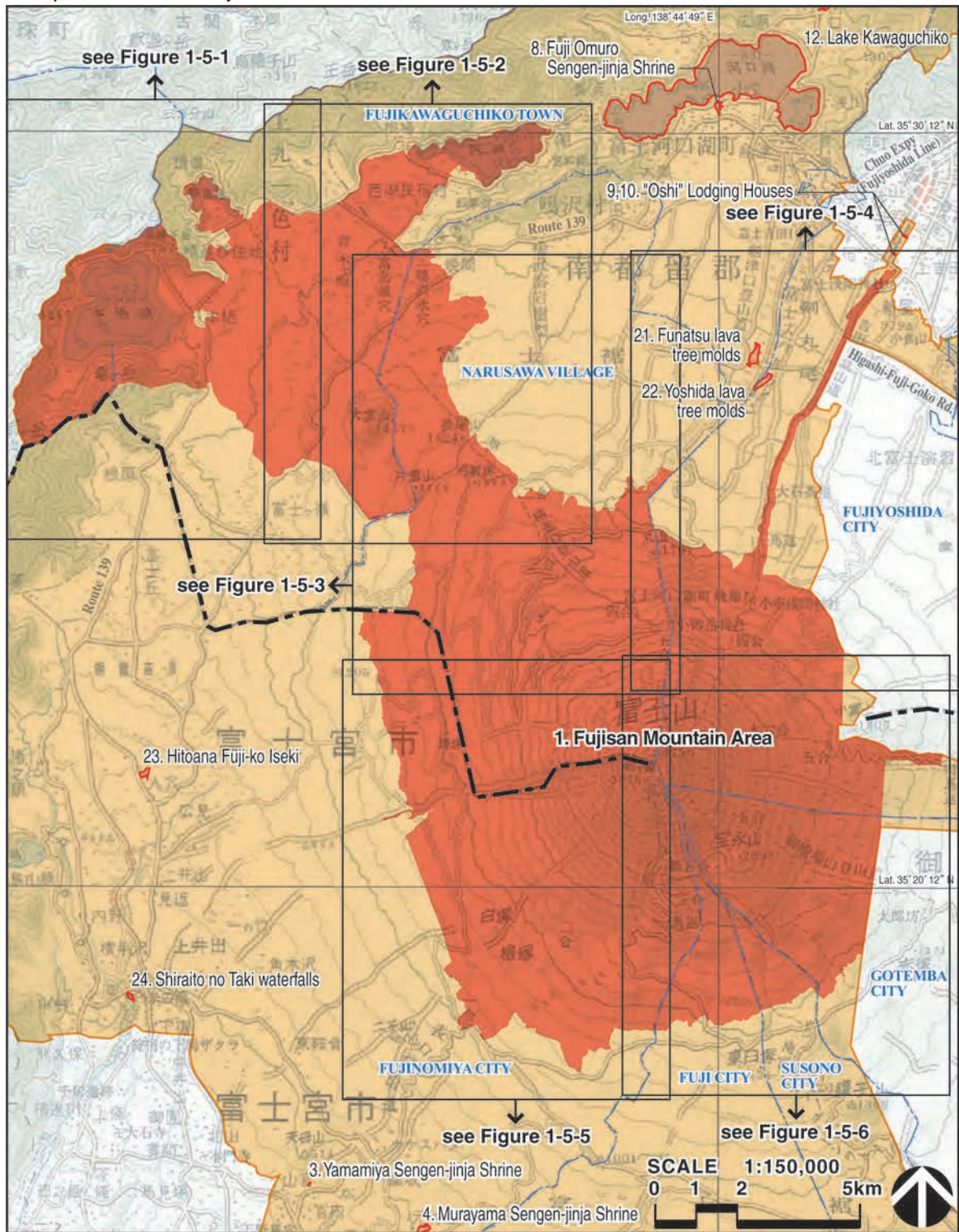


Figure 1-4 Map indicating the extent of the nominated serial property and buffer zones © PREC Institute Inc.

Component Part 1. Fujisan Mountain Area



- Legend**
- Nominated property (1. Fujisan Mountain Area)
 - Nominated property (other component parts)
 - Buffer zone
 - Prefecture boundary
 - Municipality boundary

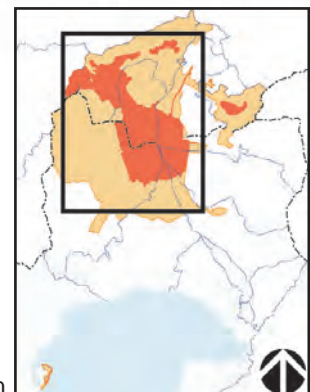
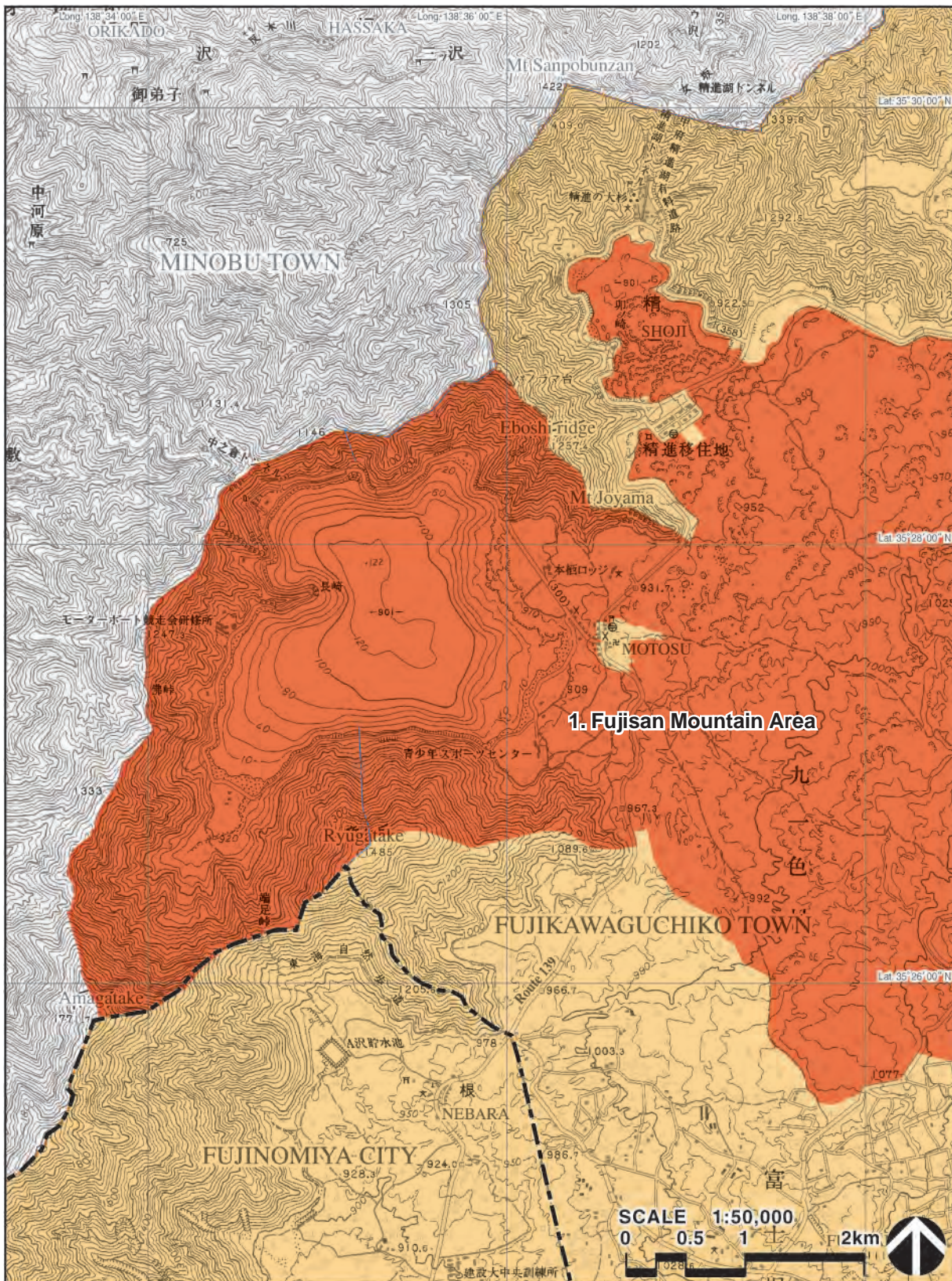


Figure 1-5 Topographical map indicating the extent of the Fujisan Mountain Area © PREC Institute Inc.

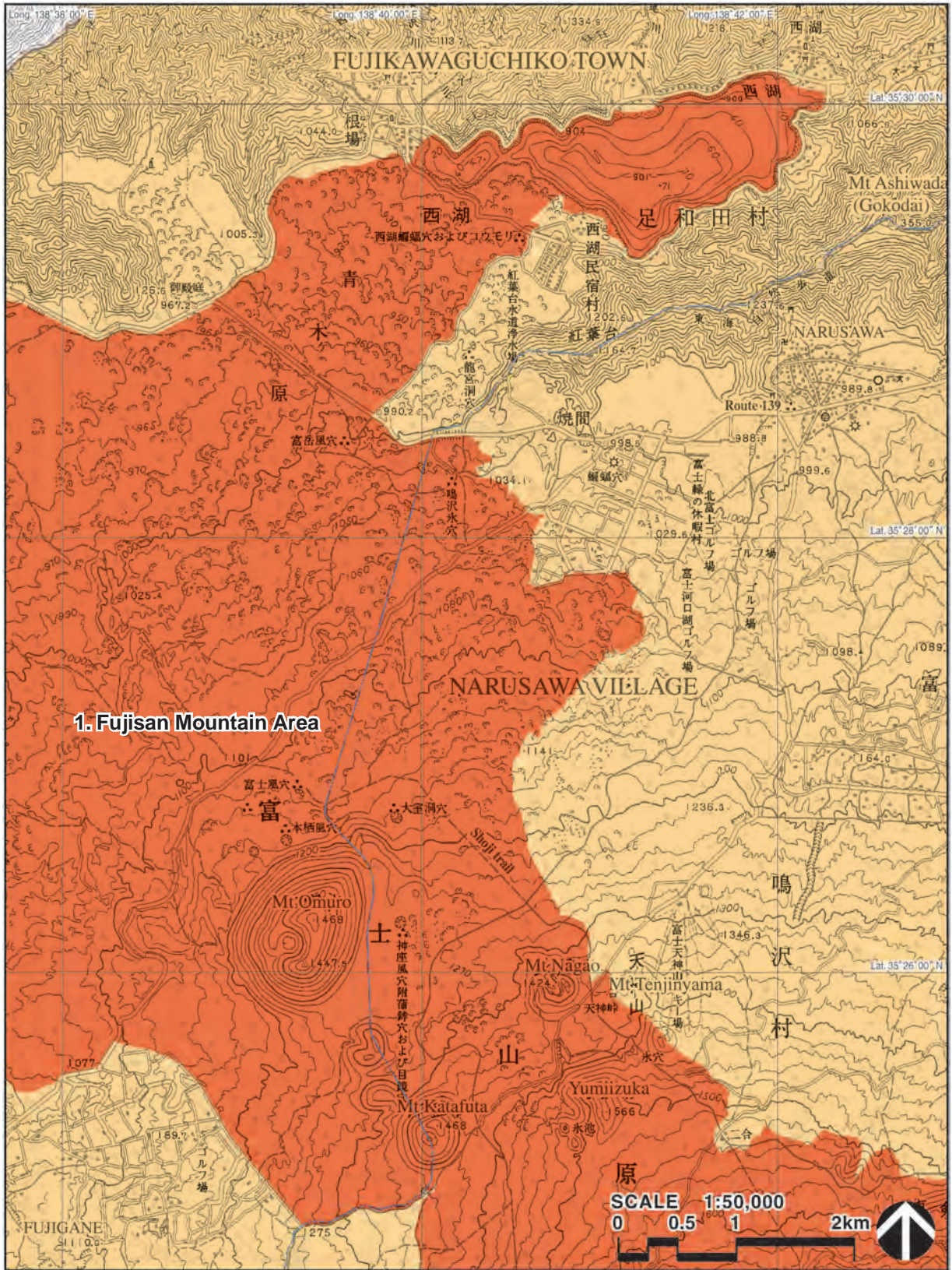


Legend

- Nominated property (1. Fujisan Mountain Area)
- Buffer zone

- Prefecture boundary
- Municipality boundary

Figure 1-5-1 Topographical map indicating the extent of the Fujisan Mountain Area (1/6) © PREC Institute Inc.



Legend

- Nominated property (1. Fujisan Mountain Area)
- Buffer zone

— Municipality boundary

Figure 1-5-2 Topographical map indicating the extent of the Fujisan Mountain Area (2/6) © PREC Institute Inc.

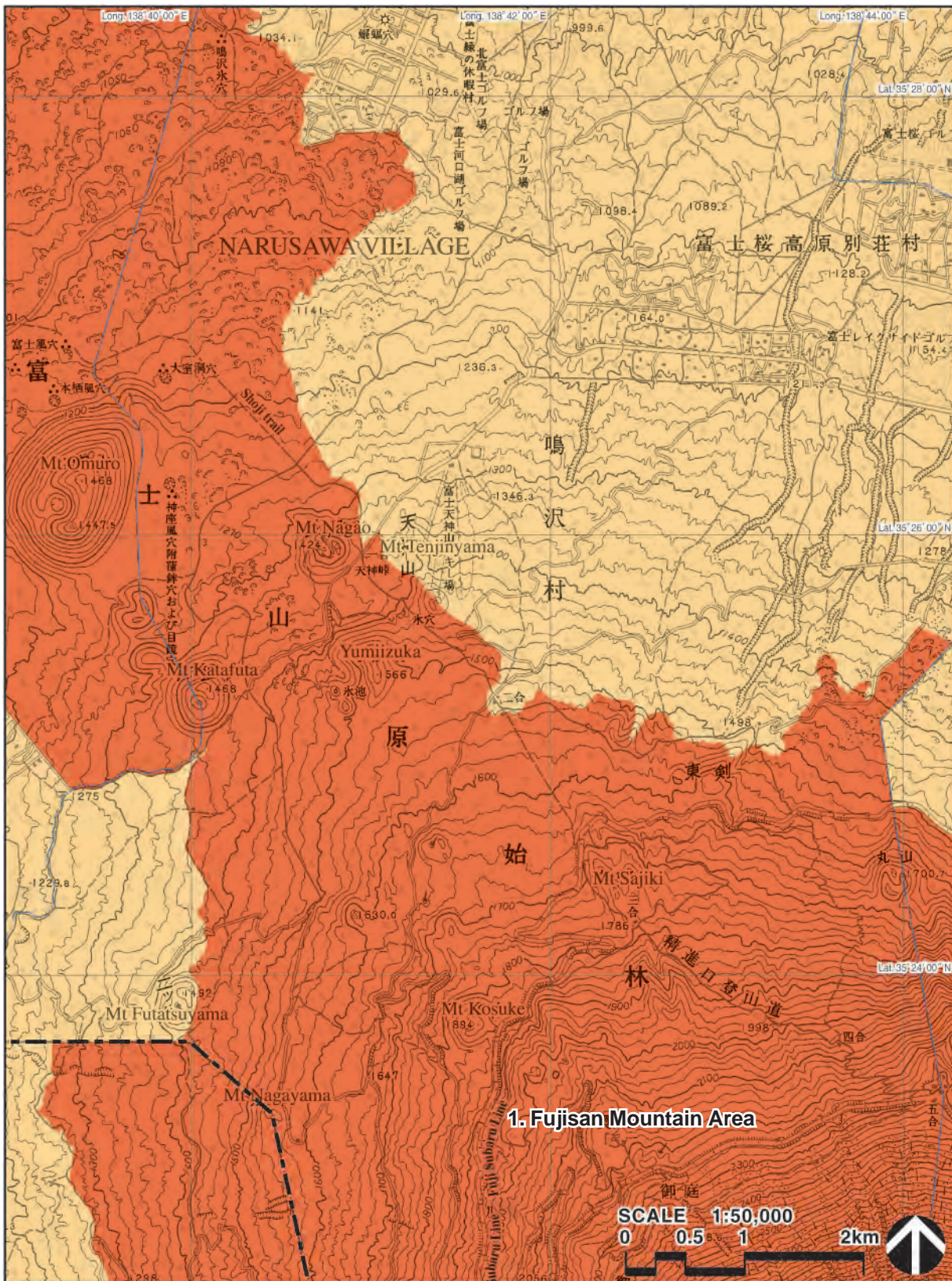
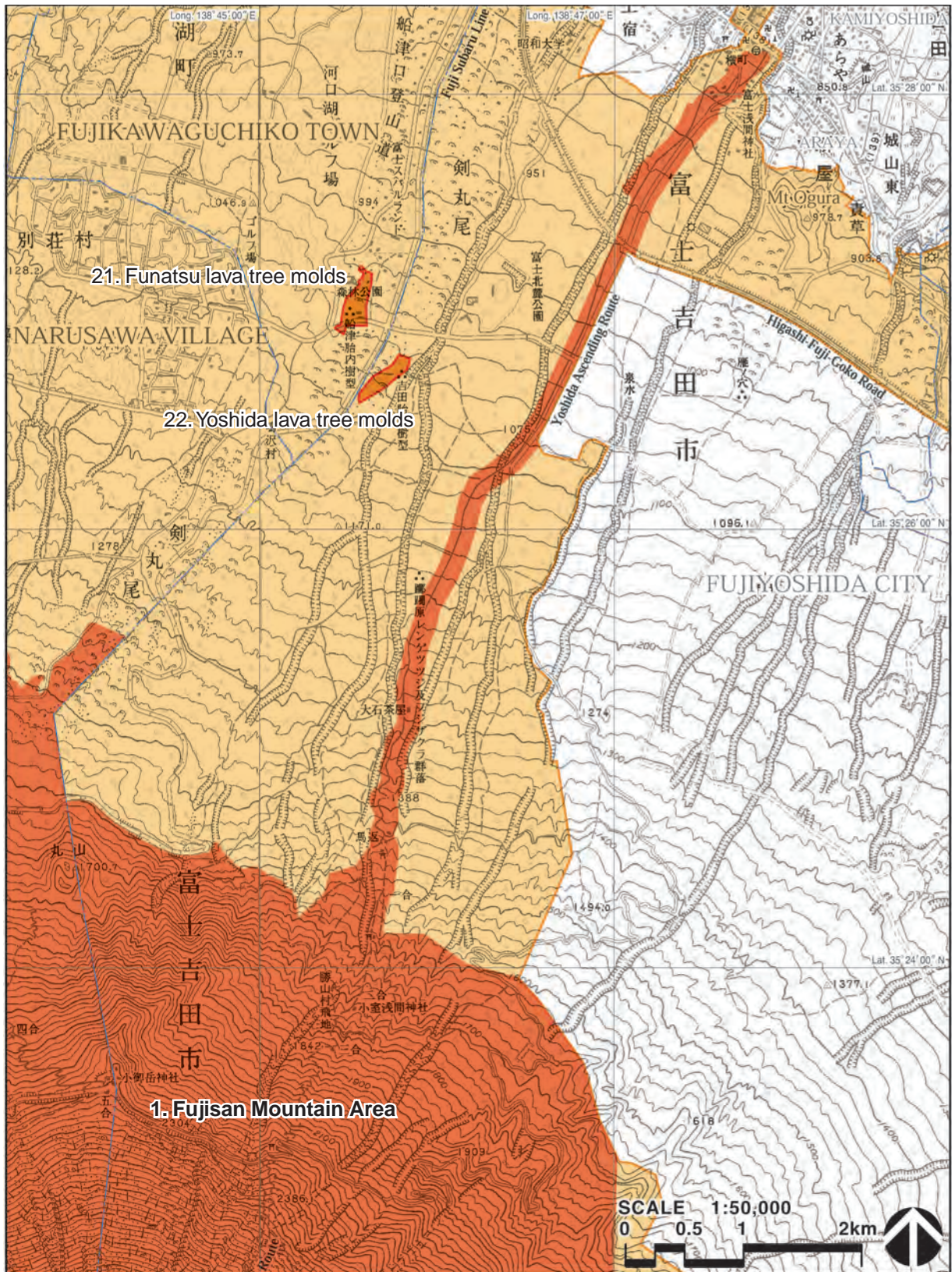


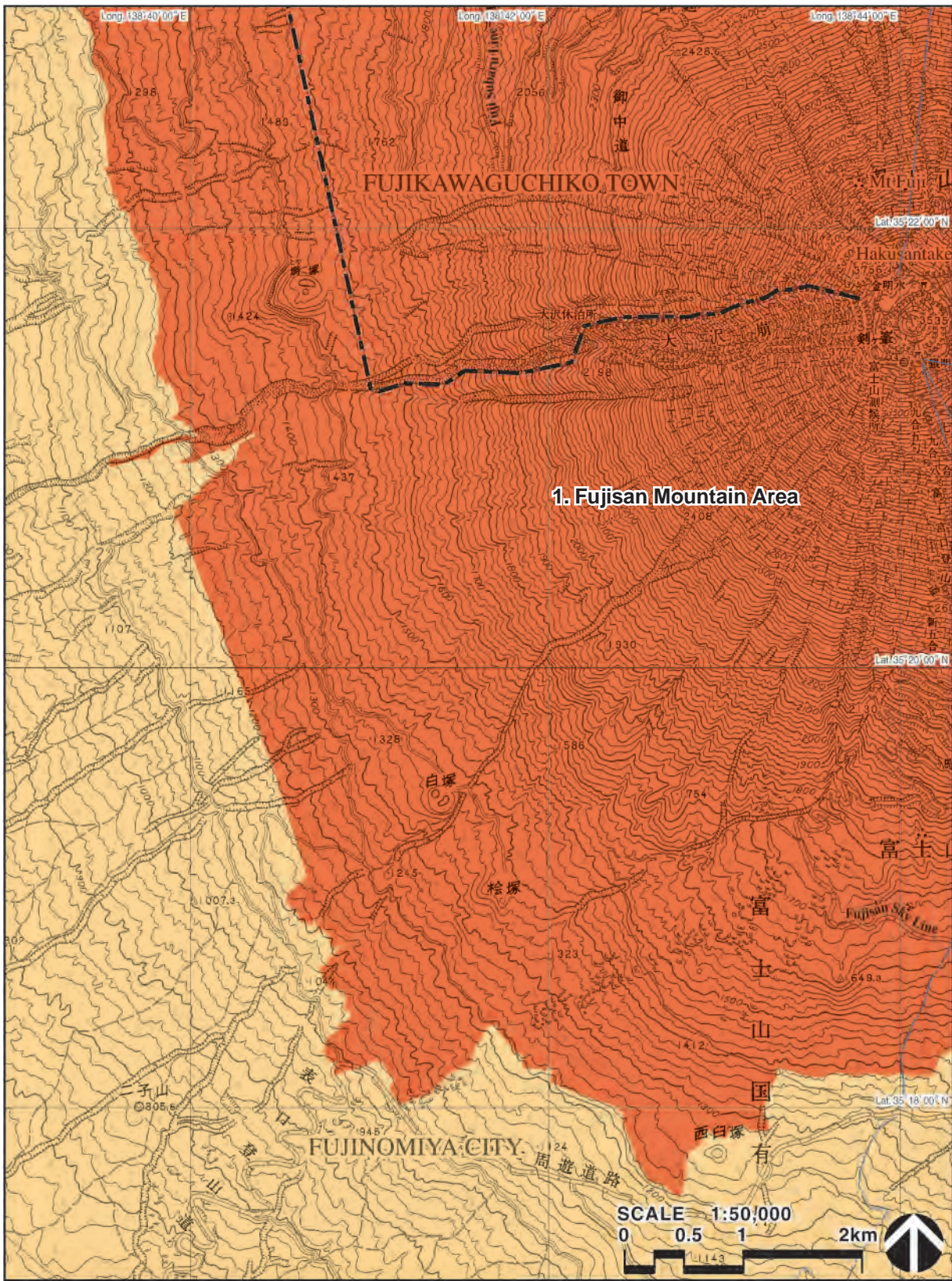
Figure 1-5-3 Topographical map indicating the extent of the Fujisan Mountain Area (3/6) © PREC Institute Inc.



Legend

- Nominated property (1. Fujisan Mountain Area)
 - Nominated property (21. Funatsu lava tree molds)
(22. Yoshida lava tree molds)
 - Buffer zone
- Municipality boundary

Figure 1-5-4 Topographical map indicating the extent of the Fujisan Mountain Area (4/6) © PREC Institute Inc.

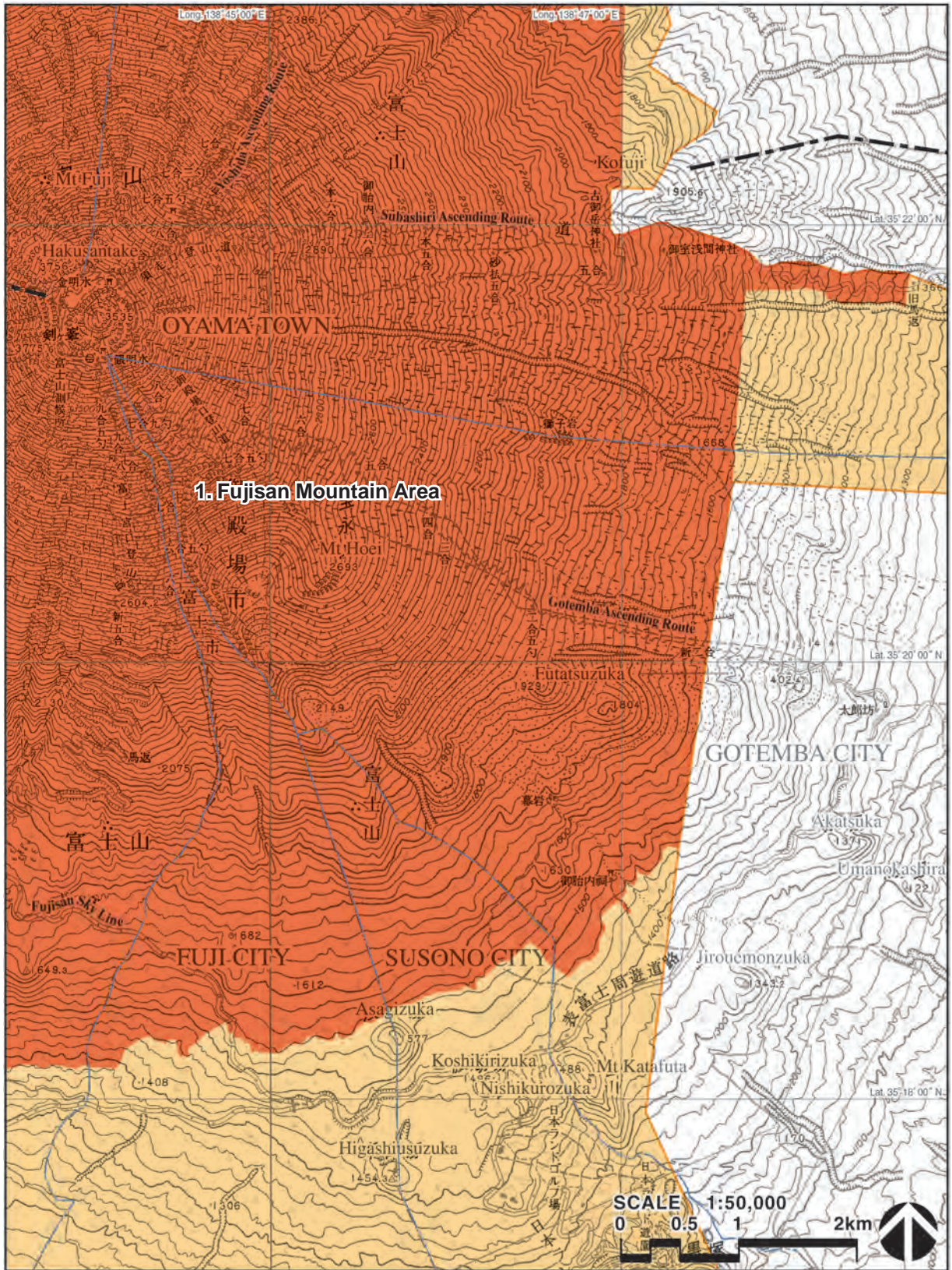


Legend

- Nominated property (1. Fujisan Mountain Area)
- Buffer zone

- Prefecture boundary
- Municipality boundary

Figure 1-5-5 Topographical map indicating the extent of the Fujisan Mountain Area (5/6) © PREC Institute Inc.



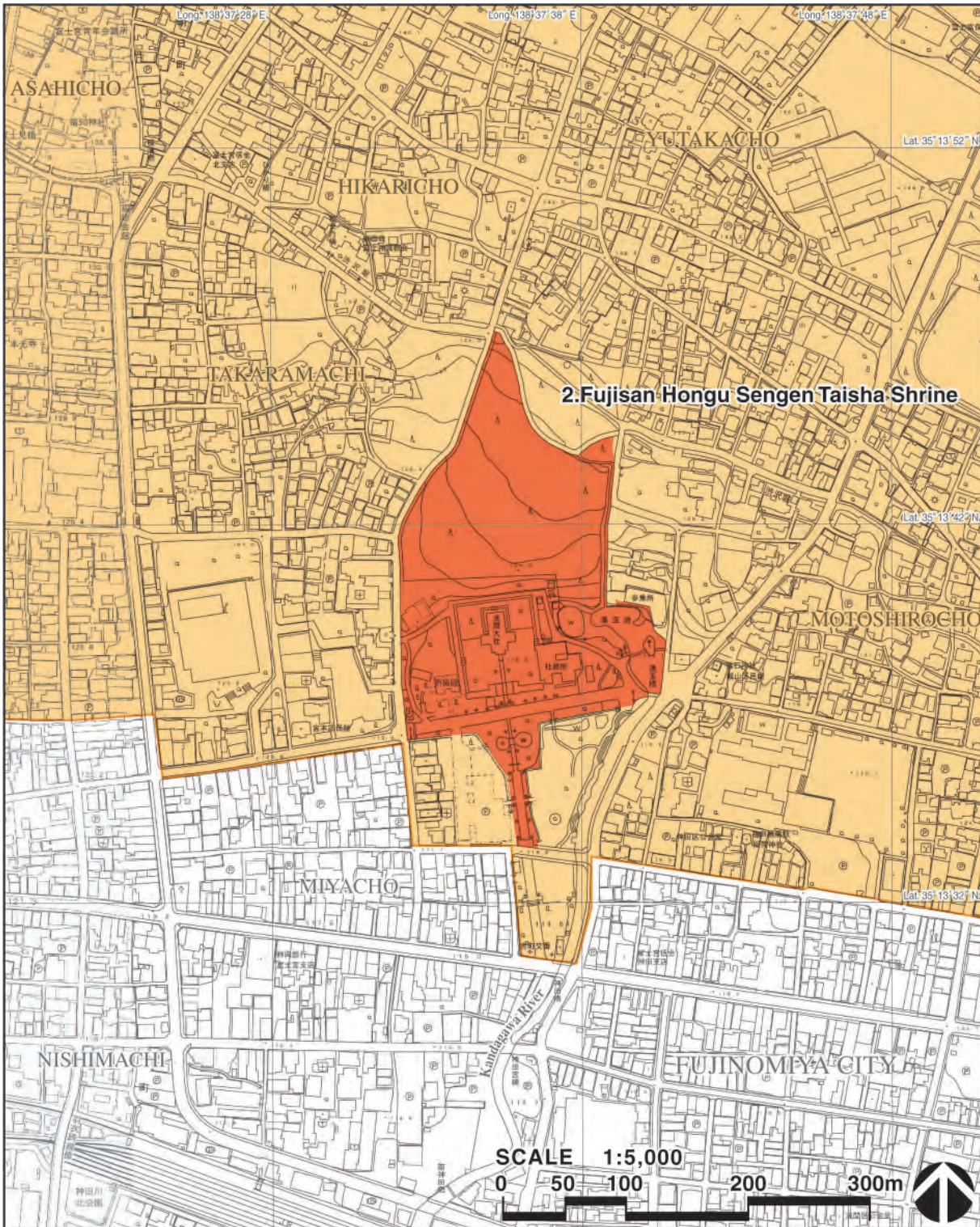
Legend

- Nominated property (1. Fujisan Mountain Area)
- Buffer zone

- Prefecture boundary
- Municipality boundary

Figure 1-5-6 Topographical map indicating the extent of the Fujisan Mountain Area (6/6) © PREC Institute Inc.

Component Part 2. Fujisan Hongu Sengen Taisha Shrine



Legend

- Nominated property (2. Fujisan Hongu Sengen Taisha Shrine)
- Buffer zone

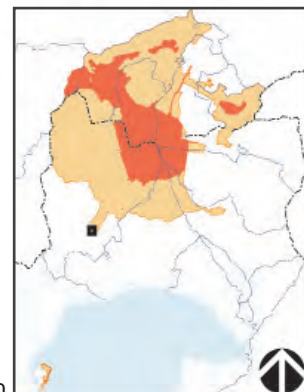
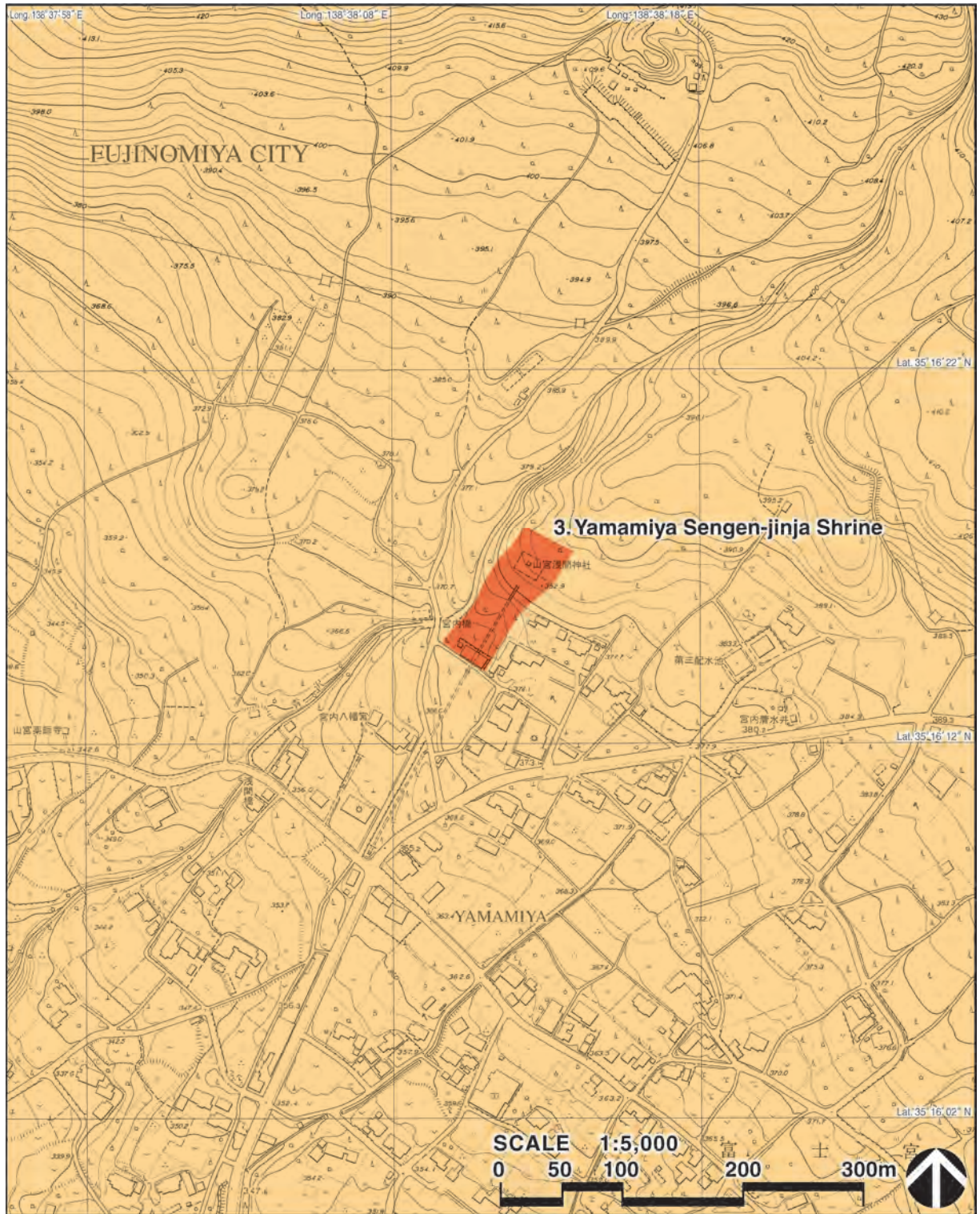


Figure 1-6 Topographical map indicating the extent of Fujisan Hongu Sengen Taisha Shrine © PREC Institute Inc.

key plan

Component Part 3. Yamamiya Sengen-jinja Shrine



Legend

- Nominated property (3. Yamamiya Sengen-jinja Shrine)
- Buffer zone

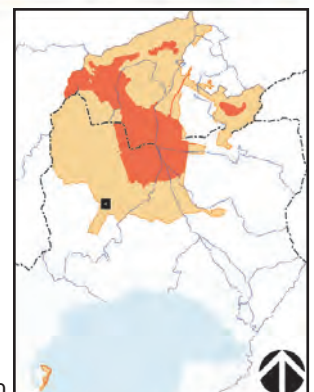
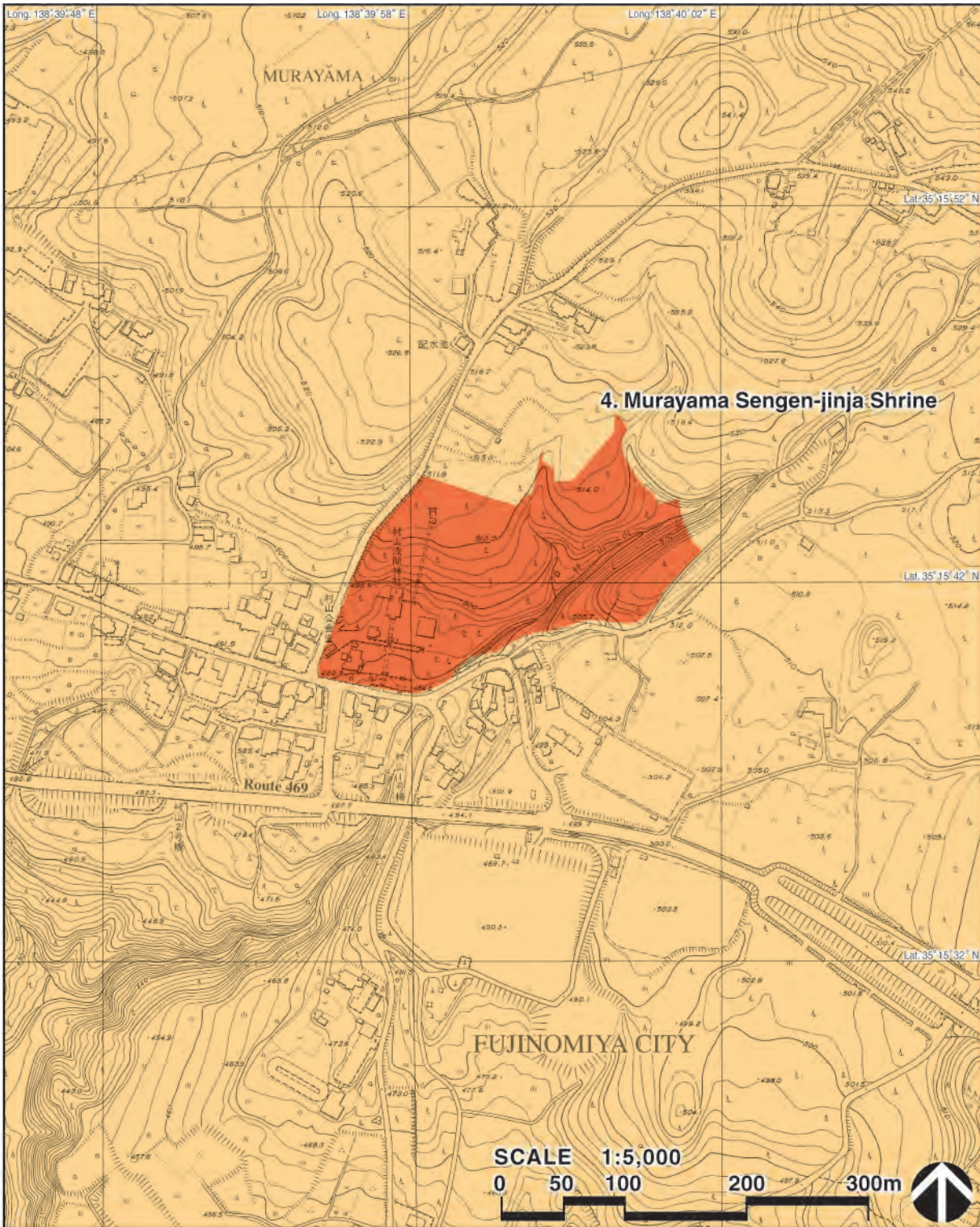


Figure 1-7 Topographical map indicating the extent of Yamamiya Sengen-jinja Shrine © PREC Institute Inc.

key plan

Component Part 4. Murayama Sengen-jinja Shrine



Legend

- Nominated property (4. Murayama Sengen-jinja Shrine)
- Buffer zone

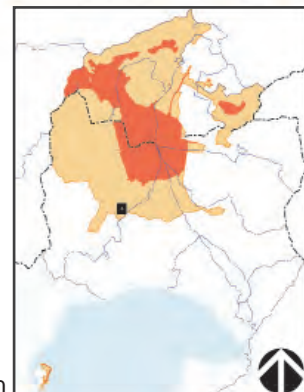
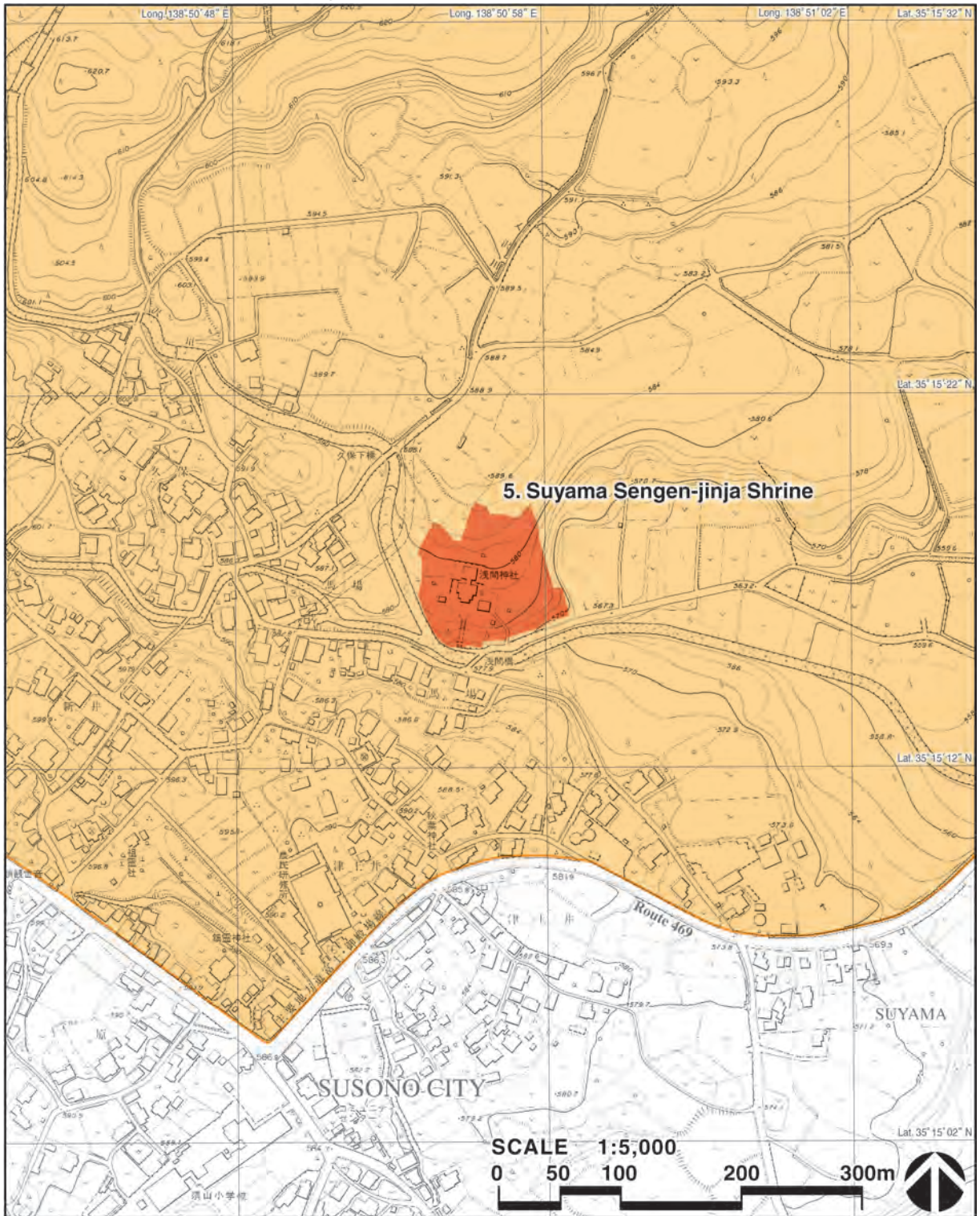


Figure 1-8 Topographical map indicating the extent of Murayama Sengen-jinja Shrine © PREC Institute Inc.

key plan

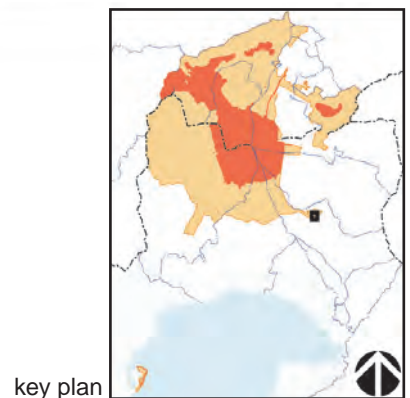
Component Part 5. Suyama Sengen-jinja Shrine



Legend

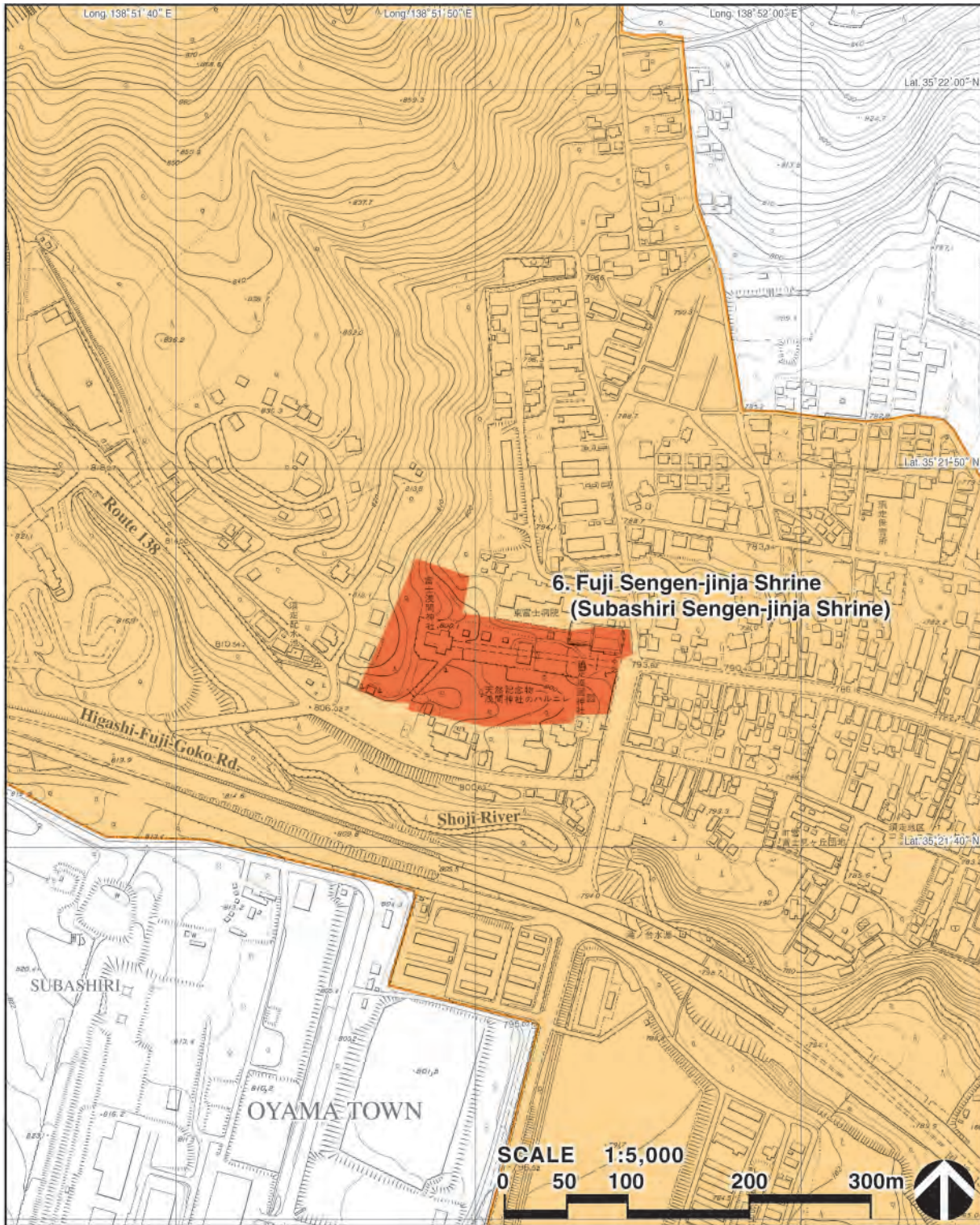
- Nominated property (5. Suyama Sengen-jinja Shrine)
- Buffer zone

Figure 1-9 Topographical map indicating the extent of Suyama Sengen-jinja Shrine © PREC Institute Inc.



key plan

Component Part 6. Fuji Sengen-jinja Shrine (Subashiri Sengen-jinja Shrine)



Legend

- Nominated property
(6. Fuji Sengen-jinja Shrine (Subashiri Sengen-jinja Shrine))
- Buffer zone

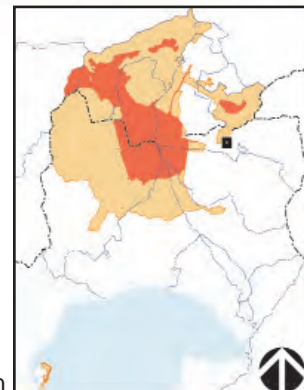
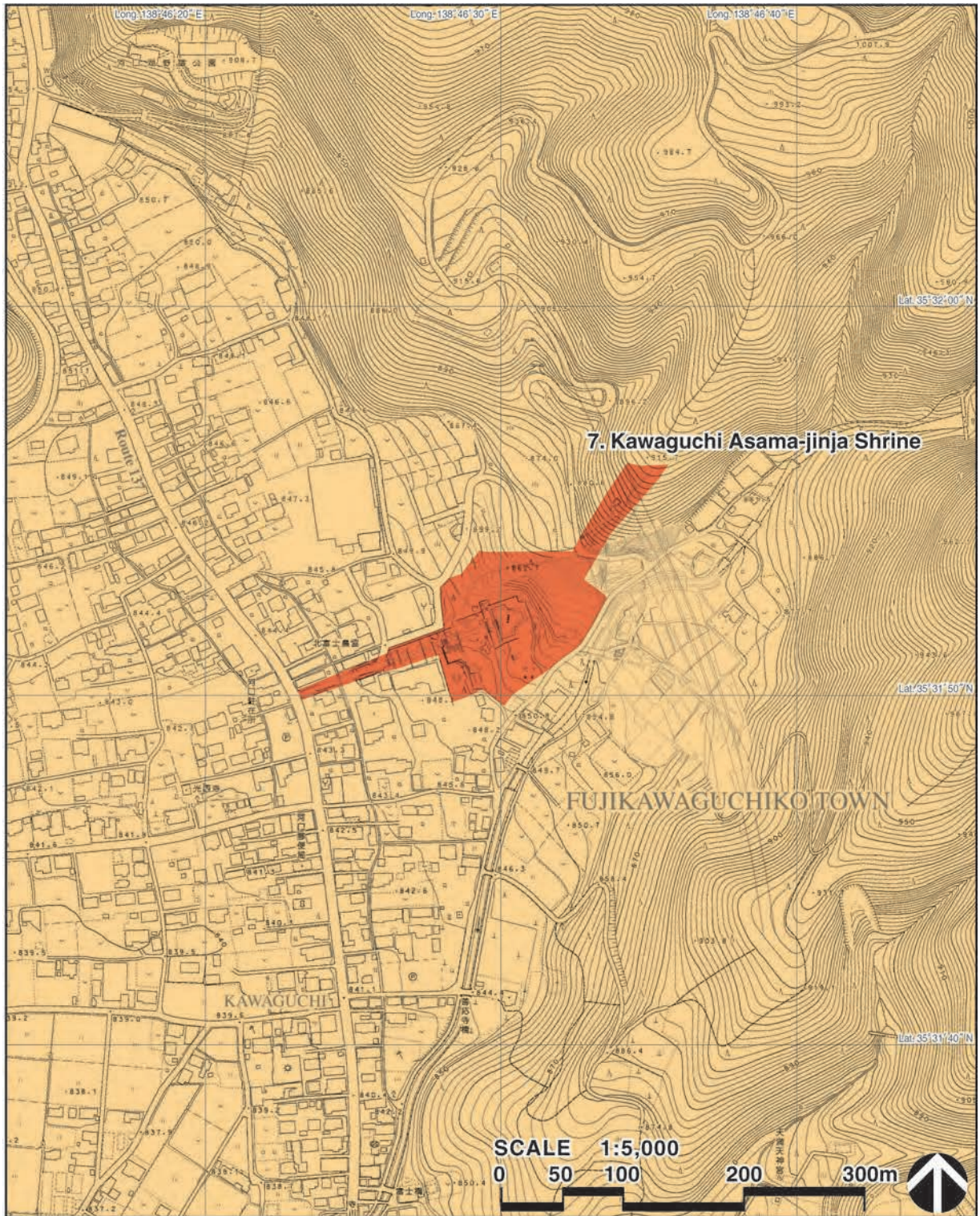


Figure 1-10 Topographical map indicating the extent of Fuji Sengen-jinja Shrine (Subashiri Sengen-jinja Shrine) © PREC Institute Inc.

key plan

Component Part 7. Kawaguchi Asama-jinja Shrine



Legend

- Nominated property (7. Kawaguchi Asama-jinja Shrine)
- Buffer zone

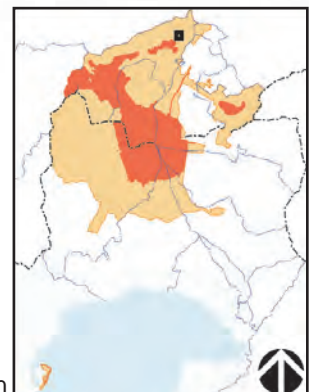
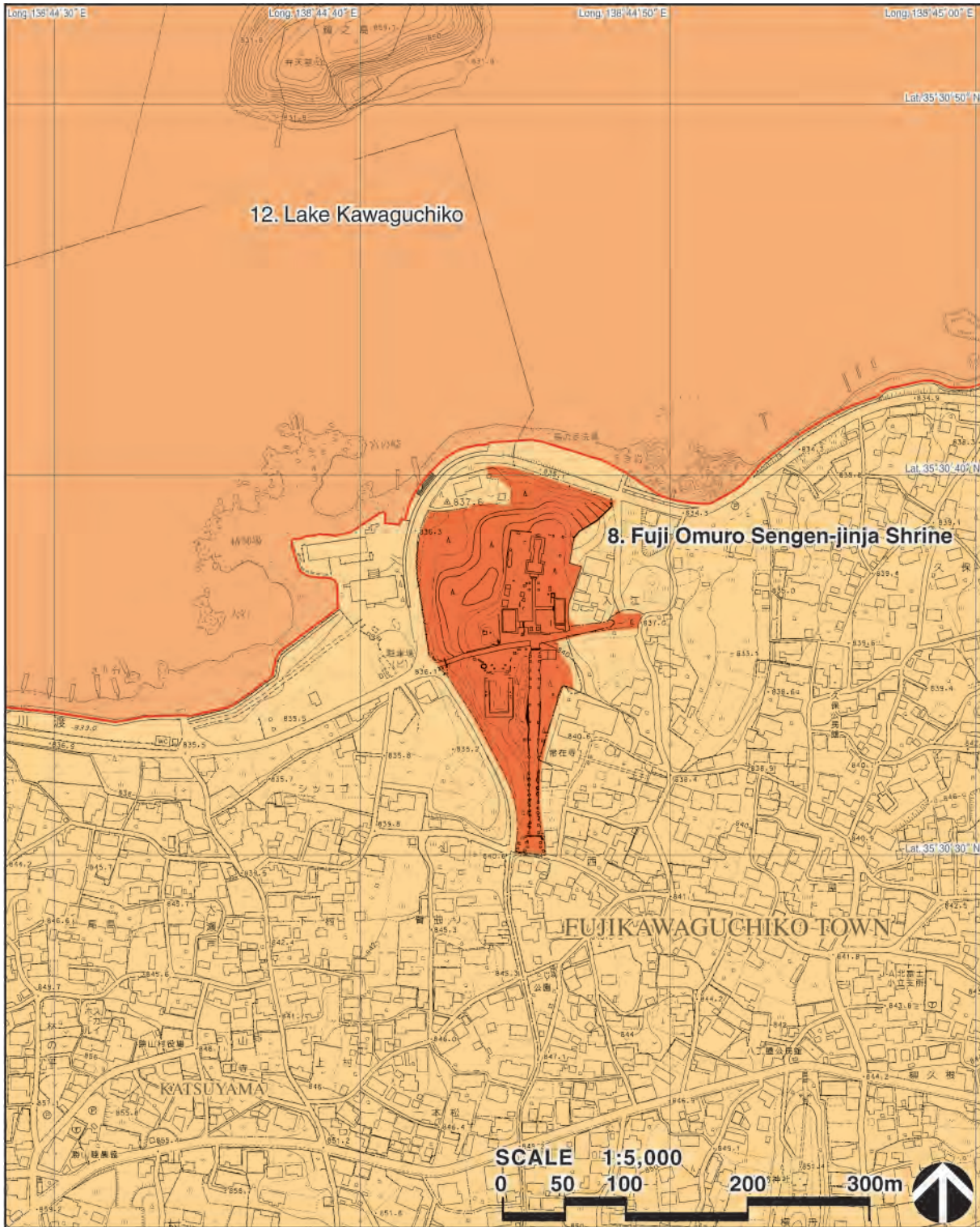


Figure 1-11 Topographical map indicating the extent of Kawaguchi Asama-jinja Shrine © PREC Institute Inc.

key plan

Component Part 8. Fuji Omuro Sengen-jinja Shrine



- Legend**
- Nominated property (8. Fuji Omuro Sengen-jinja Shrine)
 - Nominated property (12. Lake Kawaguchiko)
 - Buffer zone

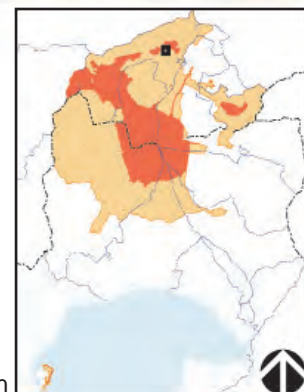
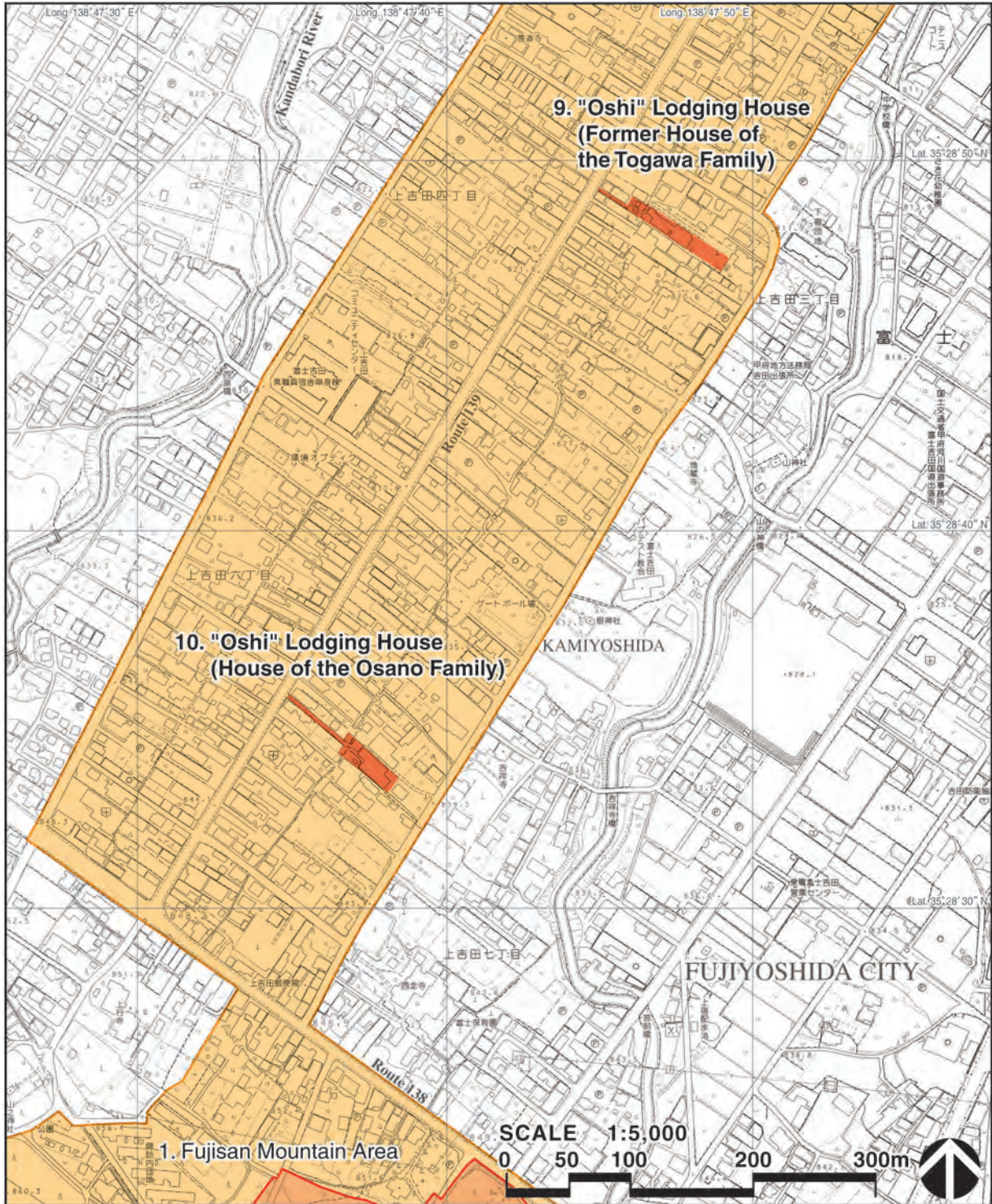


Figure 1-12 Topographical map indicating the extent of Fuji Omuro Sengen-jinja Shrine © PREC Institute Inc.

key plan

Component Part 9. "Oshi" Lodging House (Former House of the Togawa Family)

Component Part 10. "Oshi" Lodging House (House of the Osano Family)



Legend

- Nominated property
(9. "Oshi" Lodging House (Former House of the Togawa Family))
(10. "Oshi" Lodging House (House of the Osano Family))
- Nominated property (1. Fujisan Mountain Area)
- Buffer zone

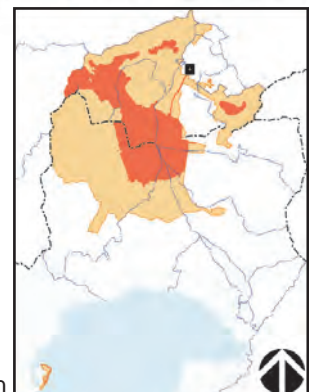
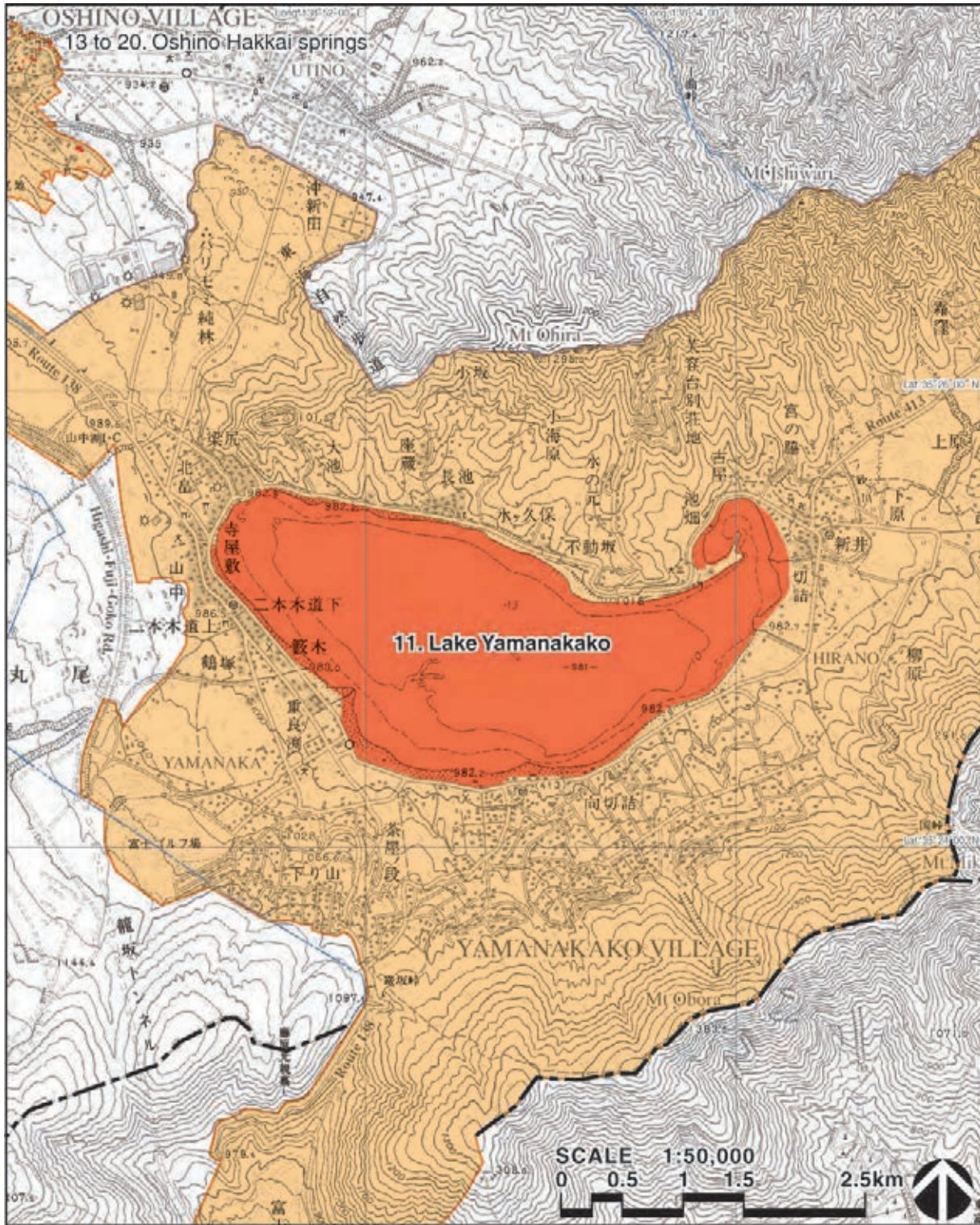


Figure 1-13 Topographical map indicating the extent of "Oshi" lodging houses (Former House of the Togawa Family and House of the Osano Family) © PREC Institute Inc.

key plan

Component Part 11. Lake Yamanakako



- Legend**
- Nominated property (11. Lake Yamanakako)
 - Nominated property (13 to 20. Oshino Hakkai springs)
 - Buffer zone
 - Prefecture boundary
 - Municipality boundary

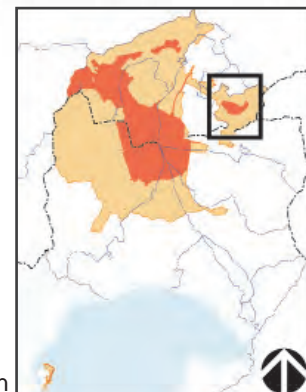
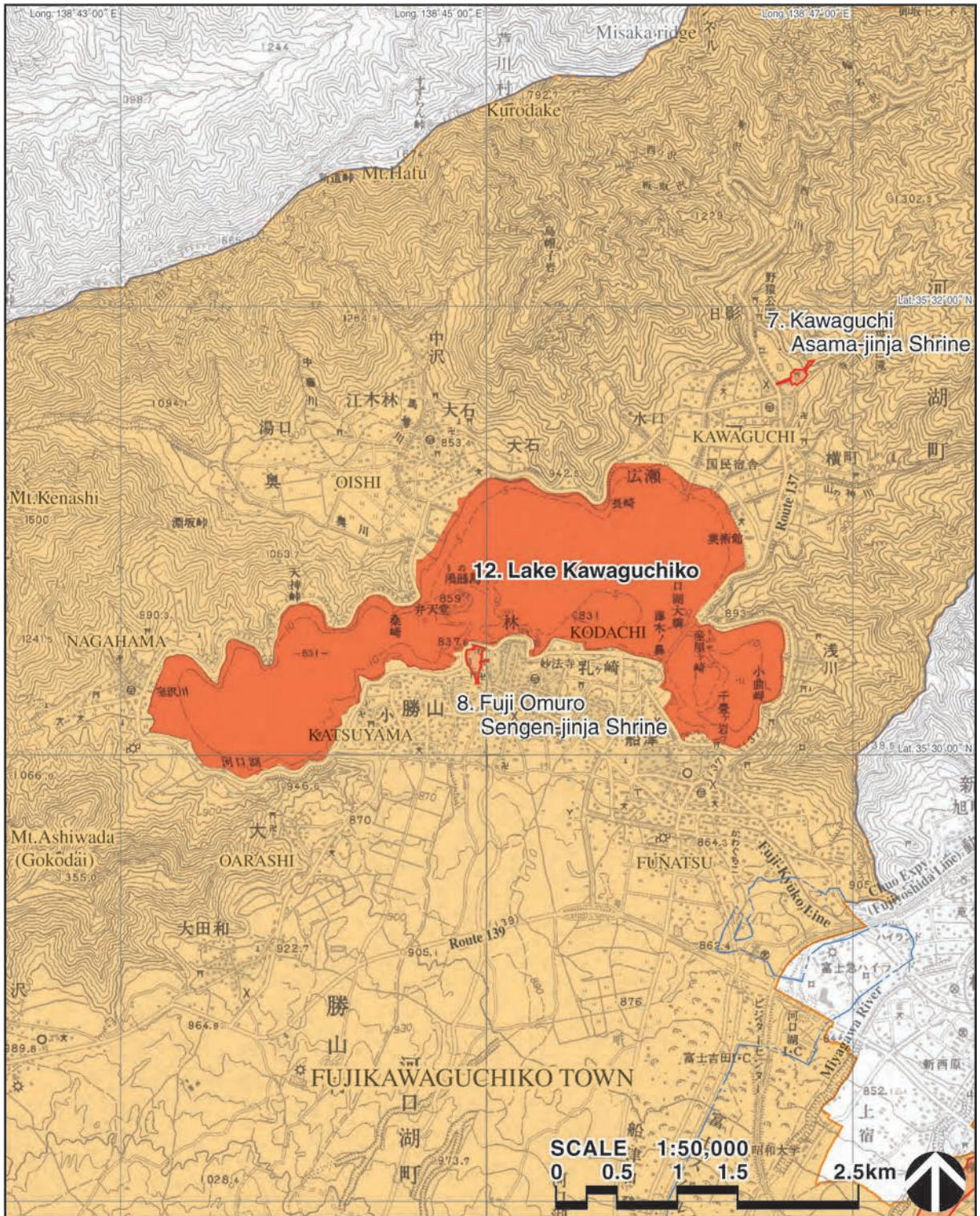


Figure 1-14 Topographical map indicating the extent of Lake Yamanakako © PREC Institute Inc.

key plan

Component Part 12. Lake Kawaguchiko



- Legend**
- Nominated property (12. Lake Kawaguchiko)
 - Nominated property (7. Kawaguchi Asama-jinja Shrine)
(8. Fuji Omuro Sengen-jinja Shrine)
 - Buffer zone
 - Municipality boundary

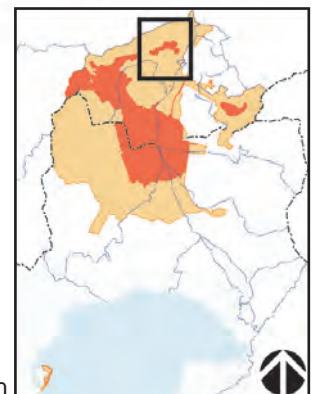
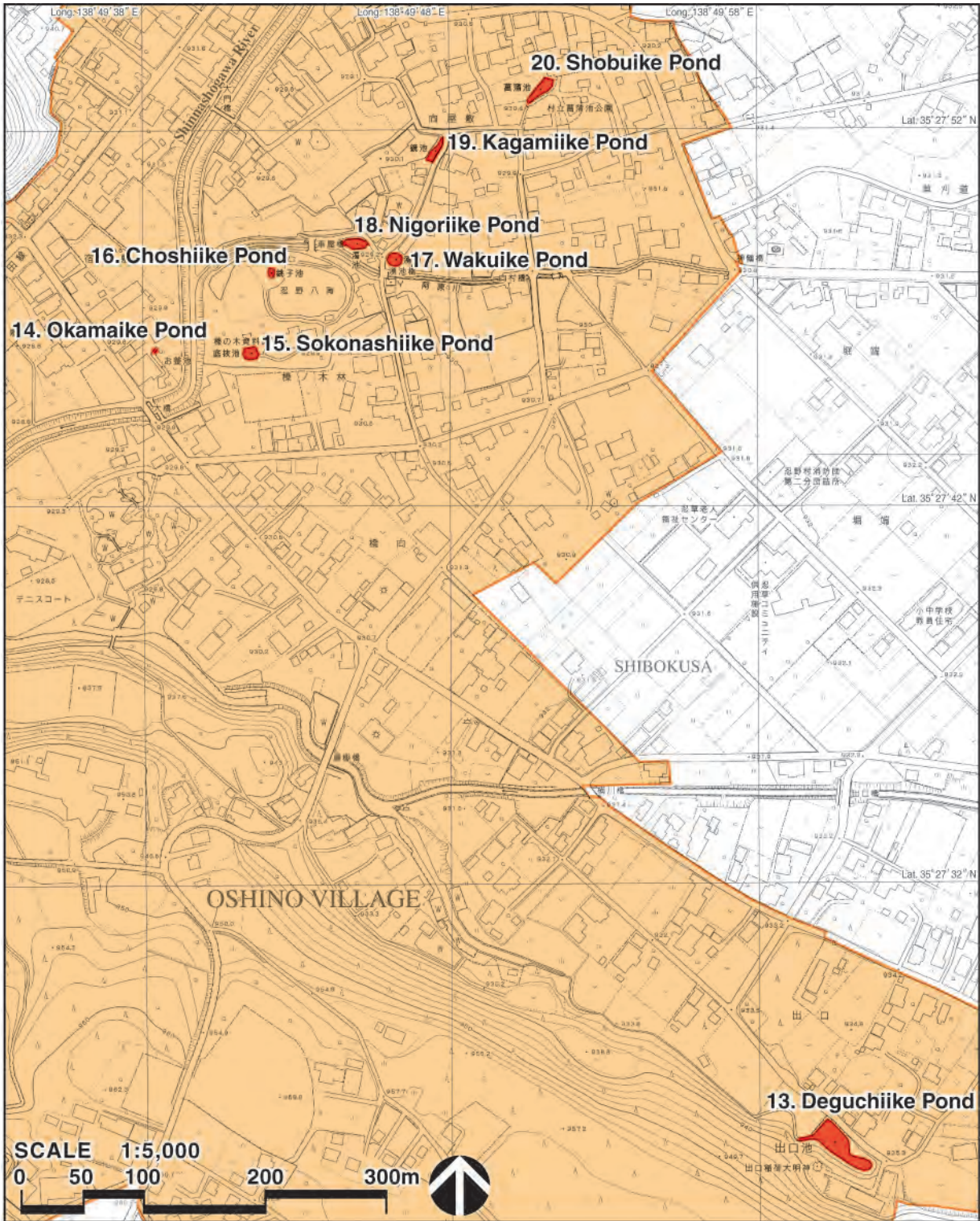


Figure 1-15 Topographical map indicating the extent of Lake Kawaguchiko © PREC Institute Inc.

key plan

Component Parts 13 to 20. Oshino Hakkai springs



Legend
 ■ Nominated property (13 to 20. Oshino Hakkai springs)
 ■ Buffer zone

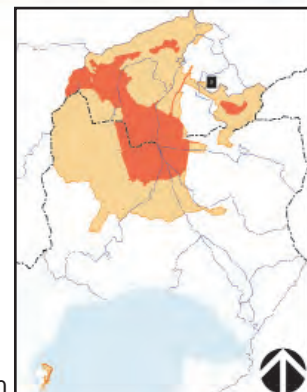
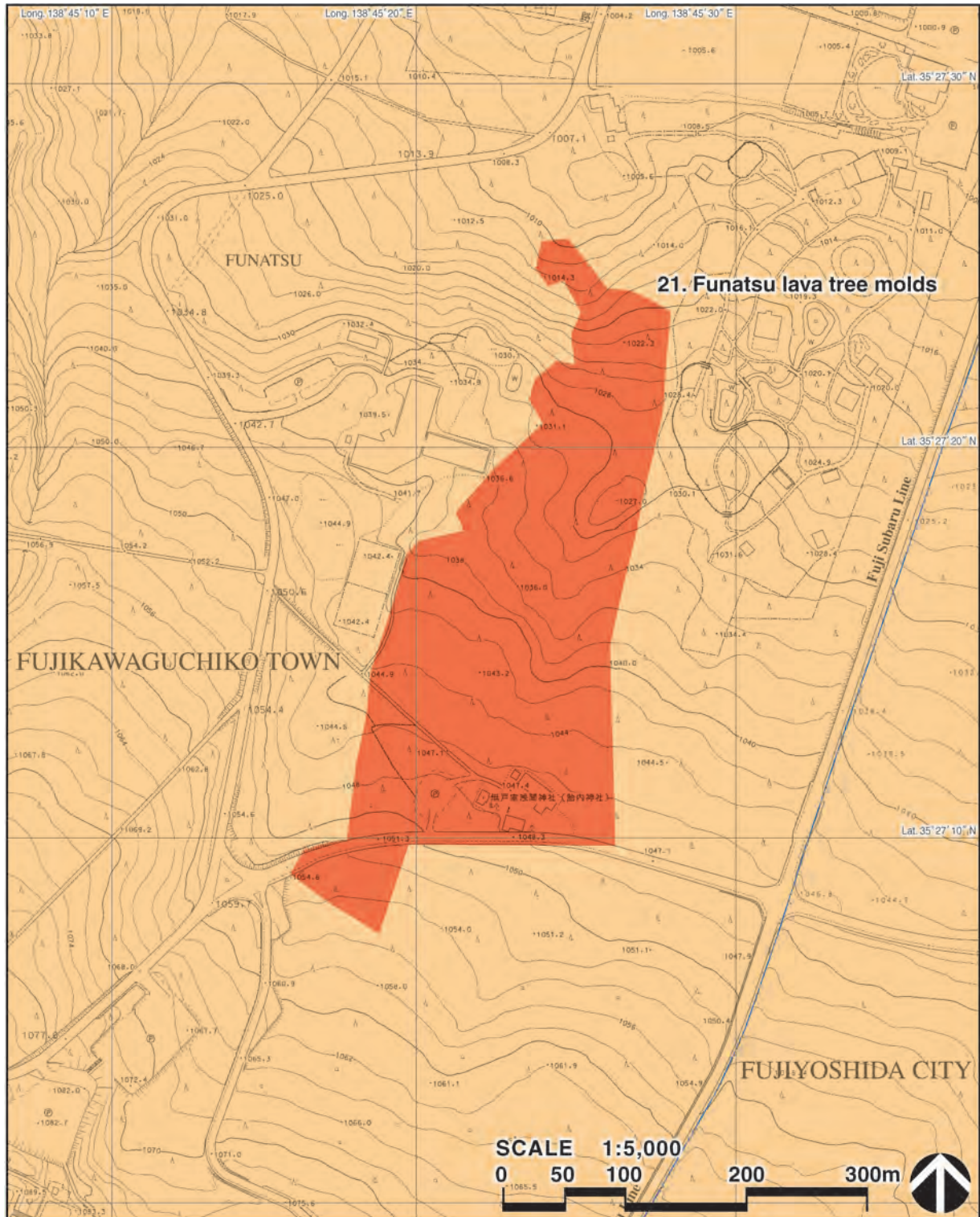


Figure 1-16 Topographical map indicating the extent of Oshino Hakkai springs © PREC Institute Inc.

key plan

Component Part 21. Funatsu lava tree molds



Legend

- Nominated property (21. Funatsu lava tree molds)
- Buffer zone
- Municipality boundary

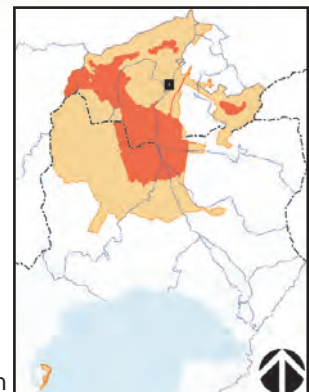
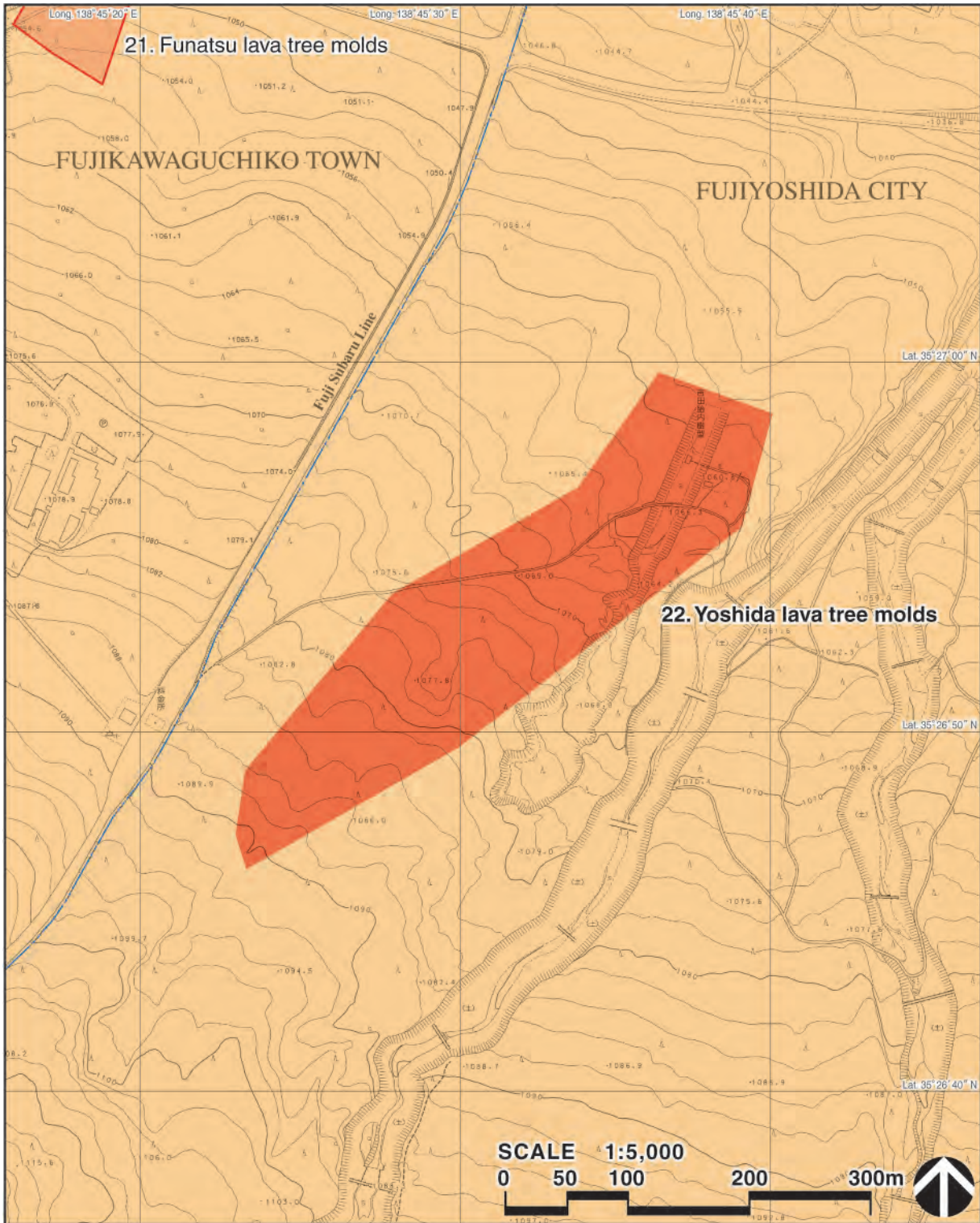


Figure 1-17 Topographical map indicating the extent of Funatsu lava tree molds © PREC Institute Inc.

key plan

Component Part 22. Yoshida lava tree molds



Legend

- Nominated property (22. Yoshida lava tree molds)
- Nominated property (21. Funatsu lava tree molds)
- Buffer zone
- Municipality boundary

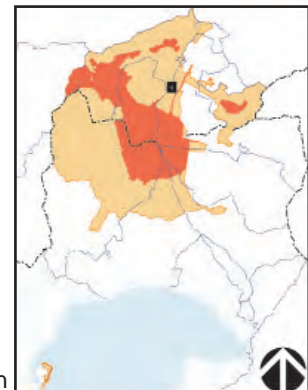
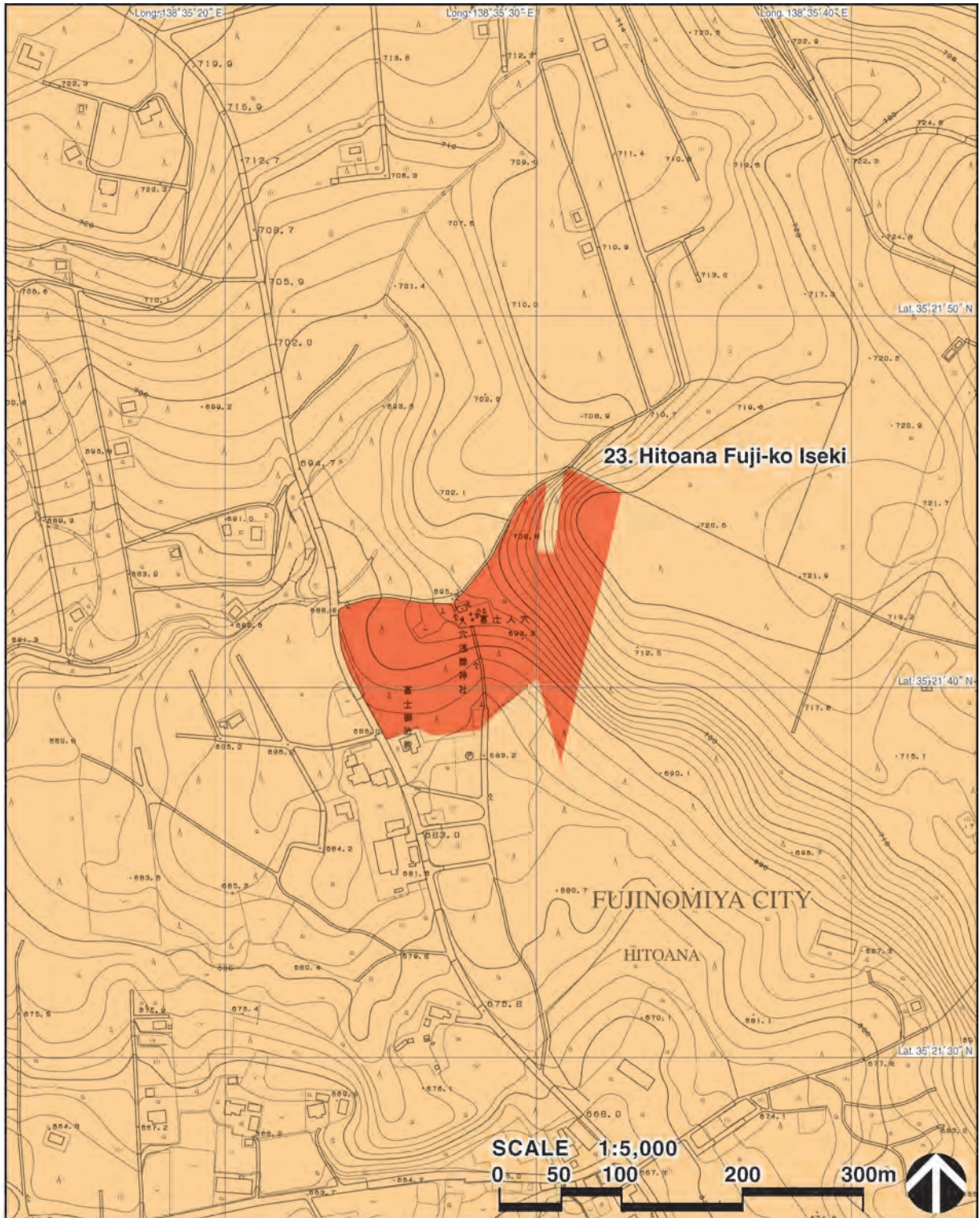


Figure 1-18 Topographical map indicating the extent of Yoshida lava tree molds © PREC Institute Inc.

key plan

Component Part 23. Hitoana Fuji-ko Iseki



- Legend**
- Nominated property (23. Hitoana Fuji-ko Iseki)
 - Buffer zone

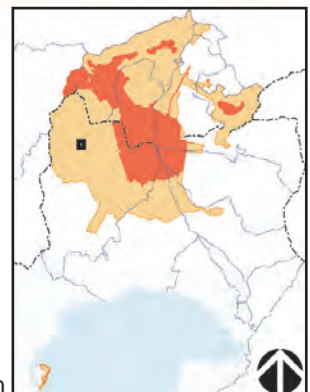
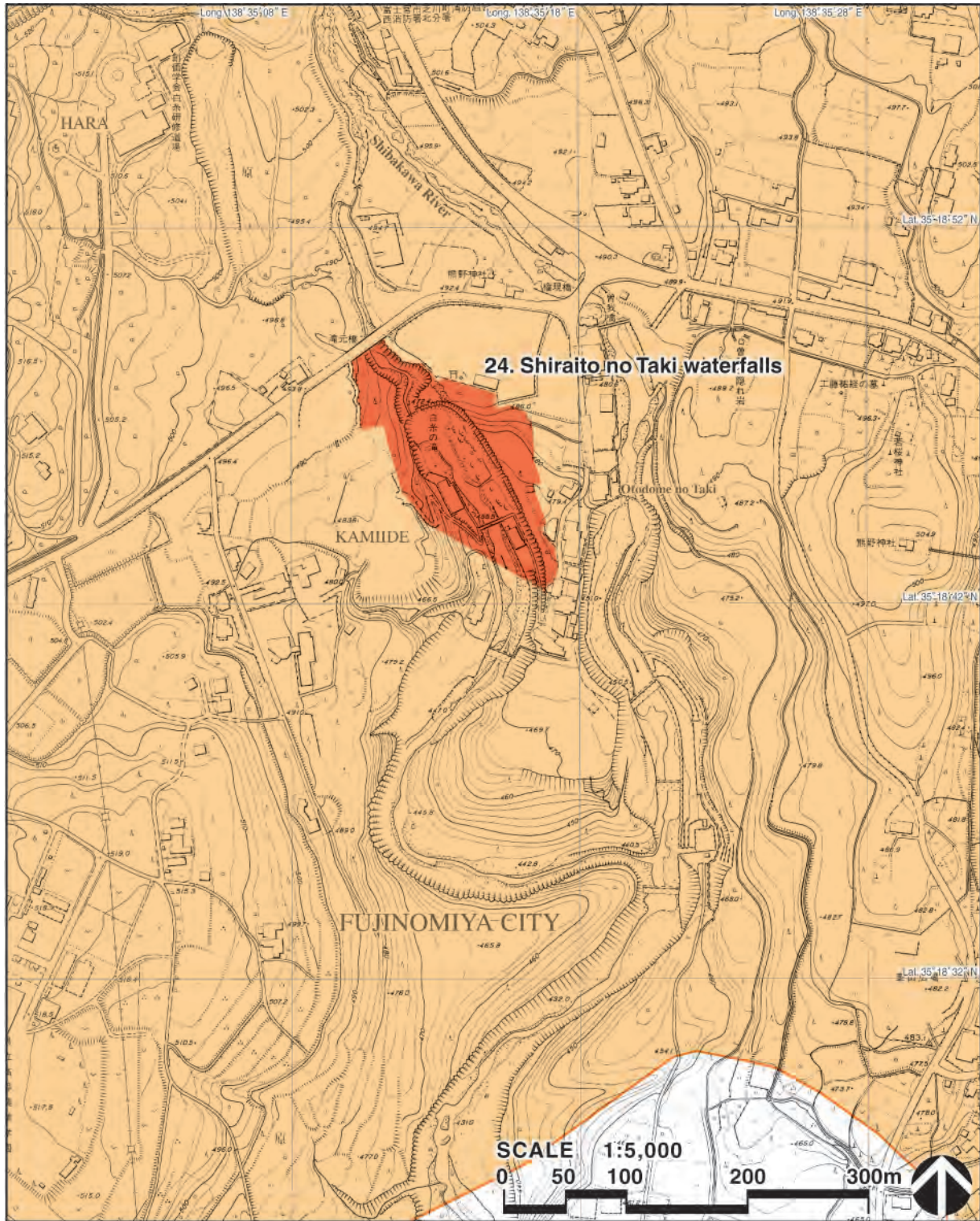


Figure 1-19 Topographical map indicating the extent of Hitoana Fuji-ko Iseki © PREC Institute Inc.

key plan

Component Part 24. Shiraito no Taki waterfalls



- Legend
- Nominated property (24. Shiraito no Taki waterfalls)
 - Buffer zone

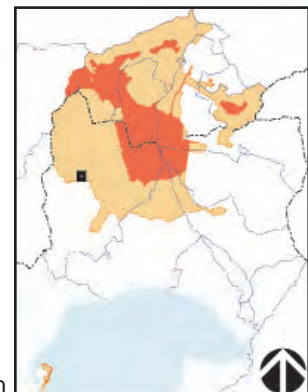


Figure 1-20 Topographical map indicating the extent of Shiraito no Taki waterfalls © PREC Institute Inc.

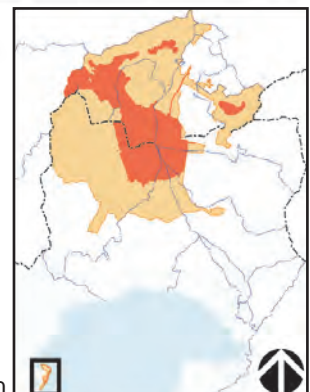
key plan

Component Part 25. Mihonomatsubara pine tree grove



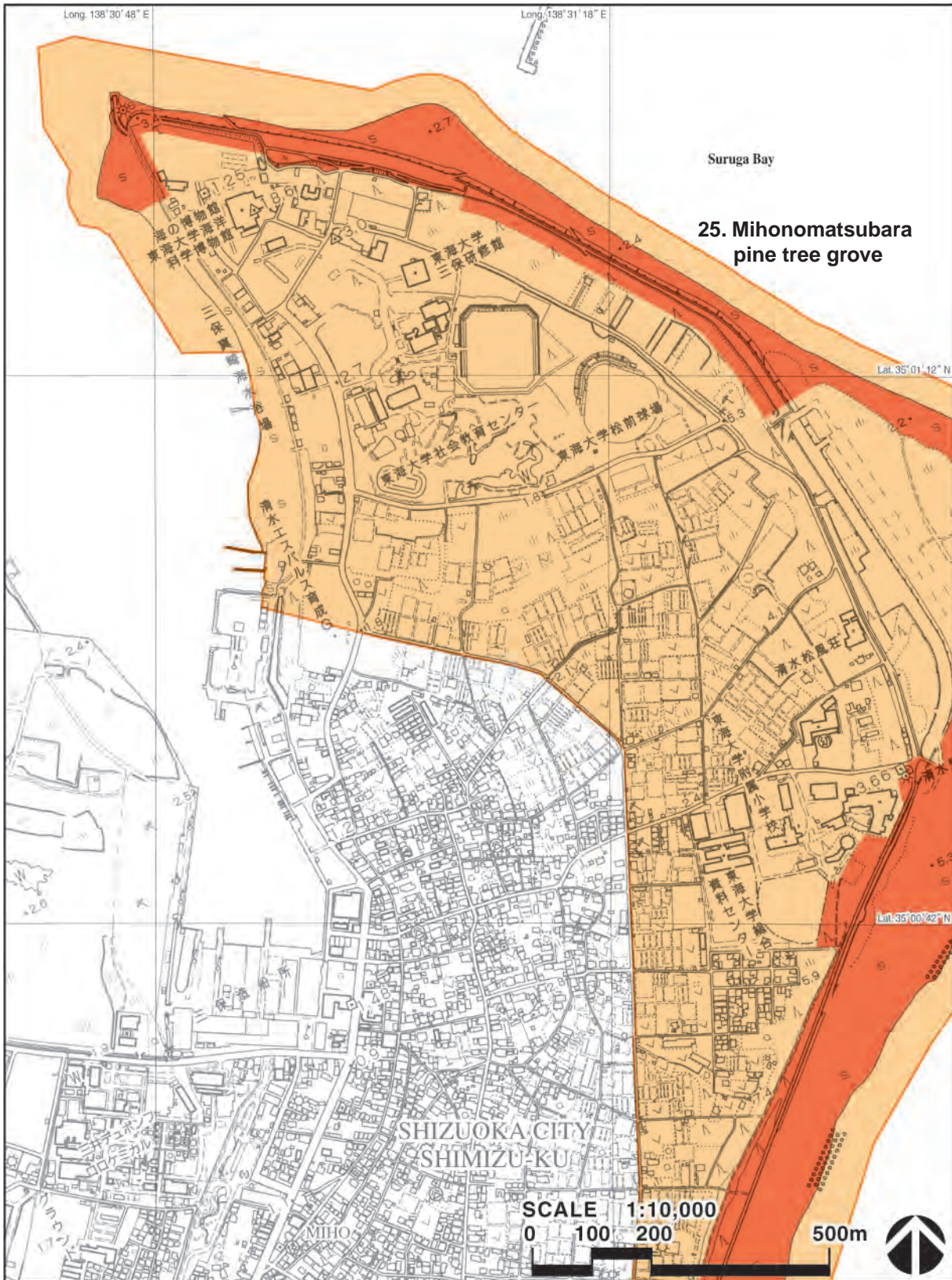
Legend

- Nominated property (25. Mihonomatsubara pine tree grove)
- Buffer zone



key plan

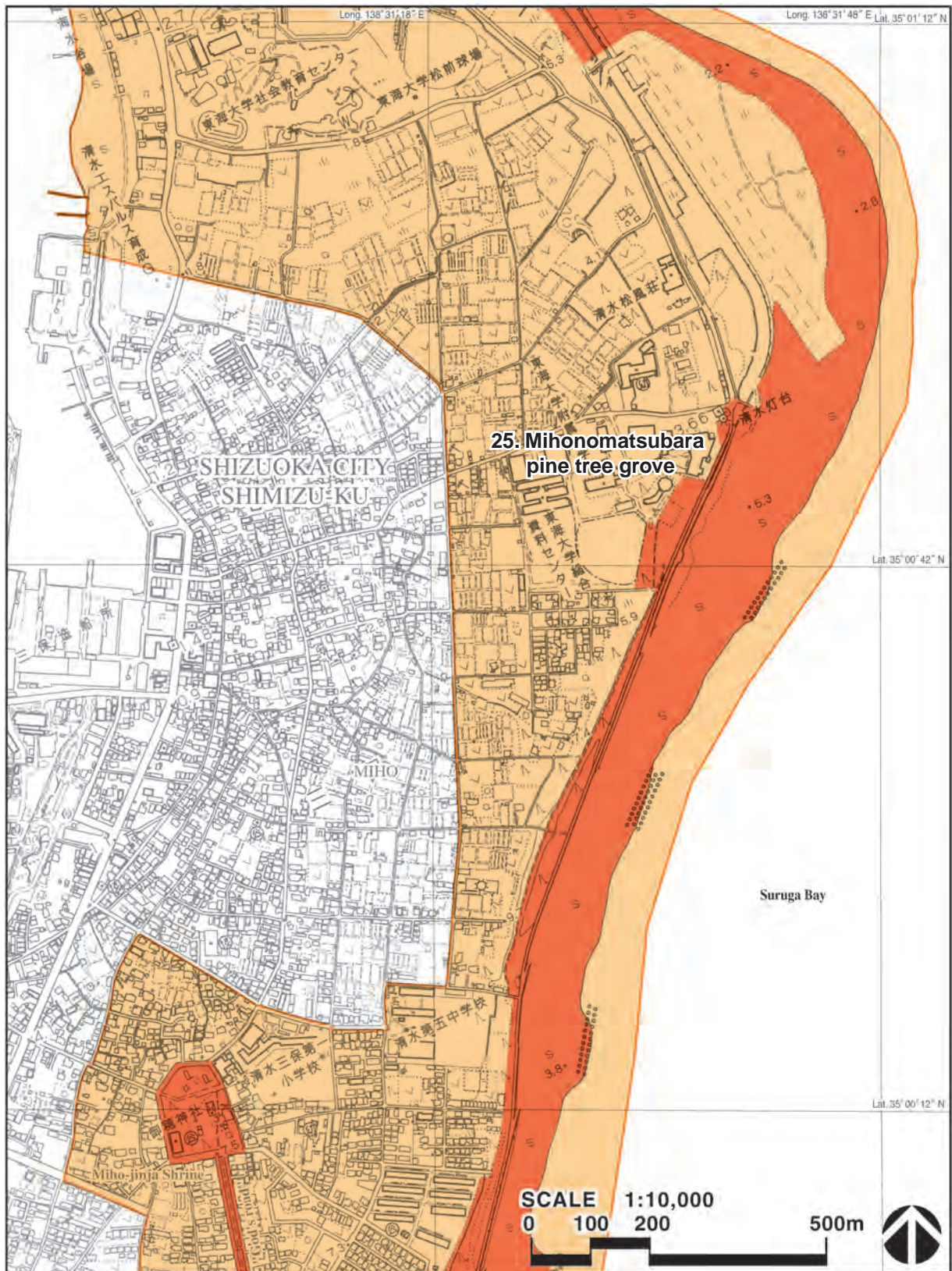
Figure 1-21 Topographical map indicating the extent of the Mihonomatsubara pine tree grove © PREC Institute Inc.



Legend

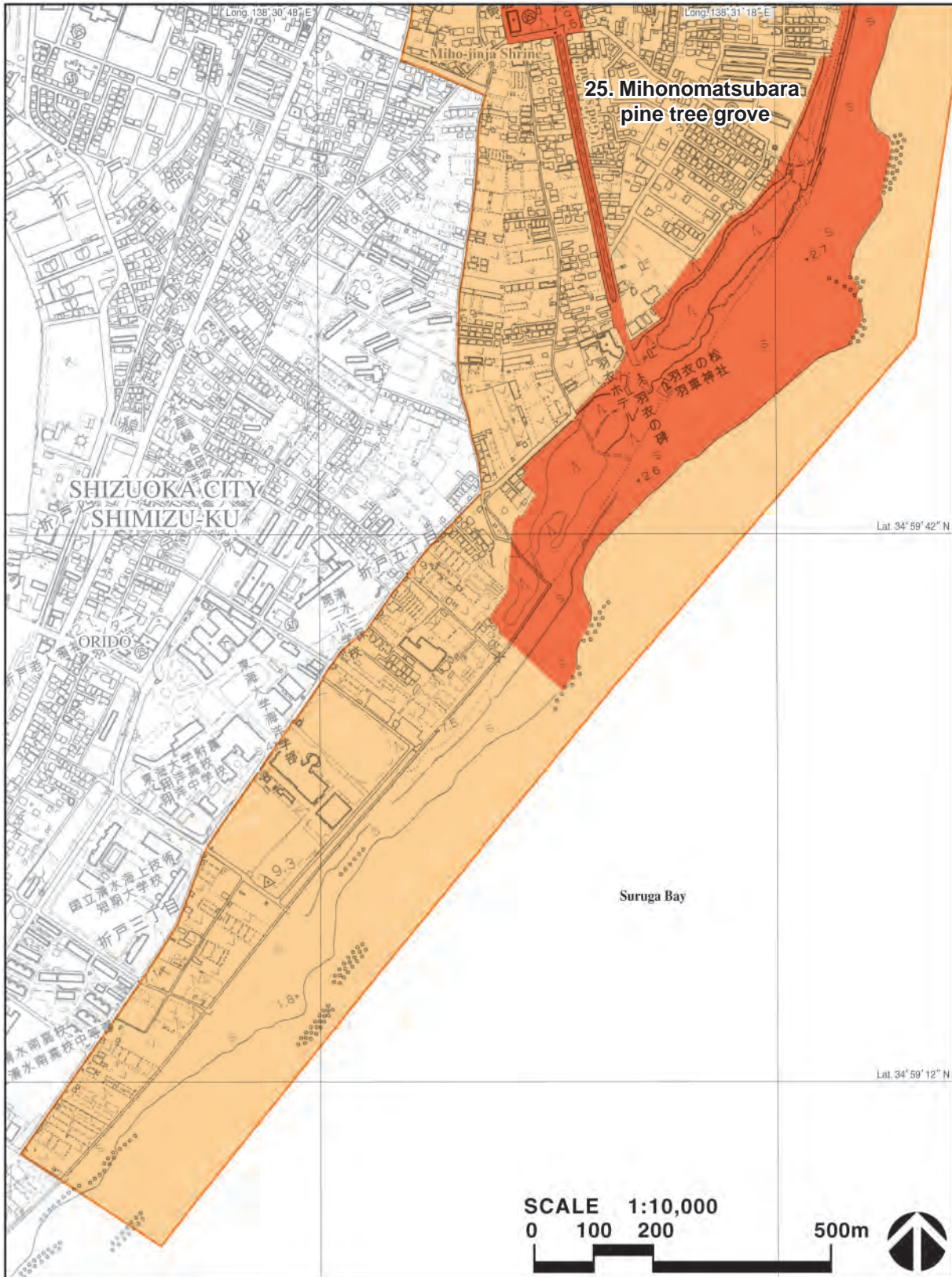
- Nominated property (25. Mihonomatsubara pine tree grove)
- Buffer zone

Figure 1-21-1 Topographical map indicating the extent of the Mihonomatsubara pine tree grove (1/3) © PREC Institute Inc.



- Legend
- Nominated property (25. Mihonomatsubara pine tree grove)
 - Buffer zone

Figure 1-21-2 Topographical map indicating the extent of the Mihonomatsubara pine tree grove (2/3). © PREC Institute Inc.



Legend

- Nominated property (25. Mihonomatsubara pine tree grove)
- Buffer zone

Figure 1-21-3 Topographical map indicating the extent of the Mihonomatsubara pine tree grove (3/3) © PREC Institute Inc.