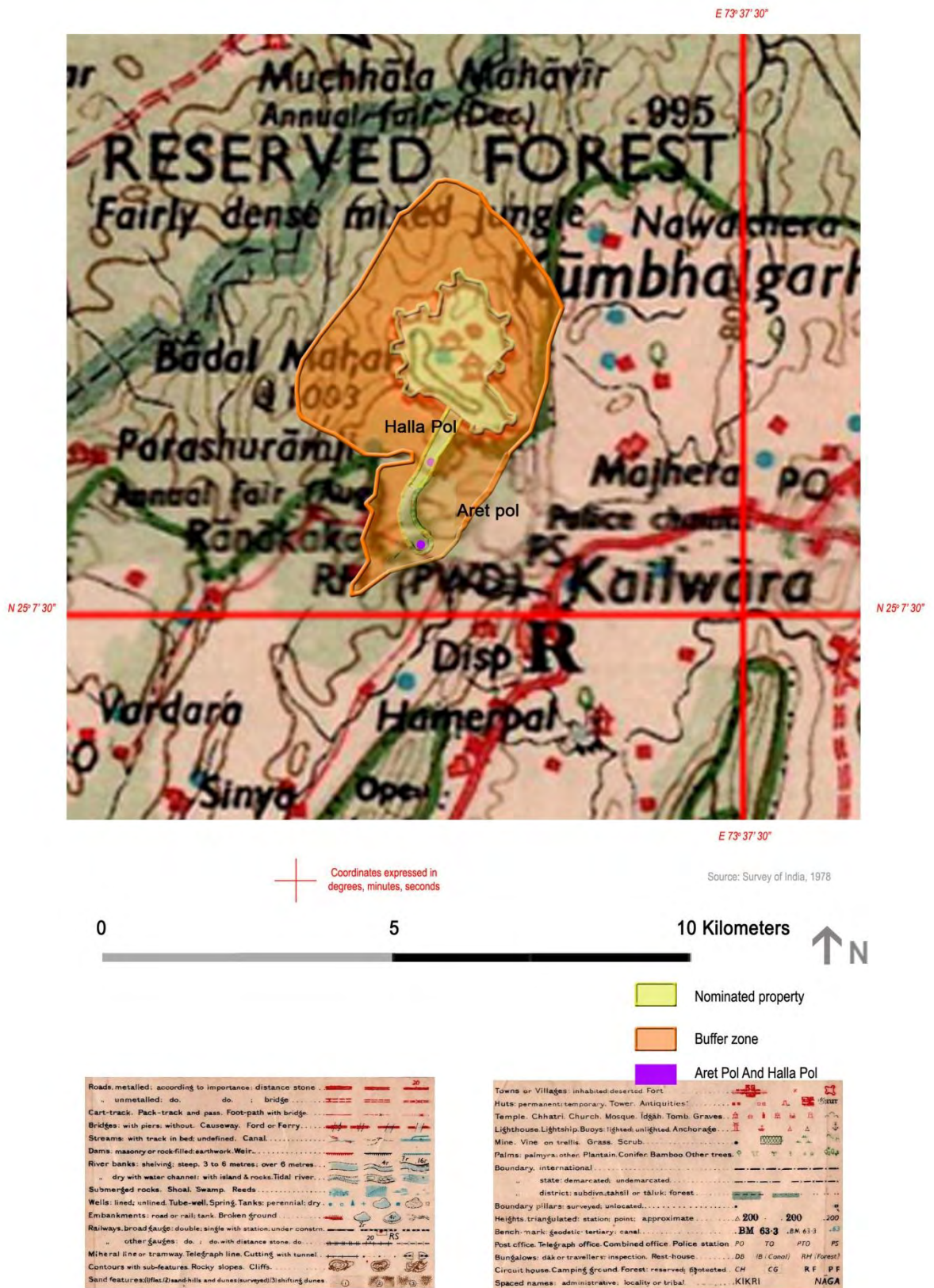
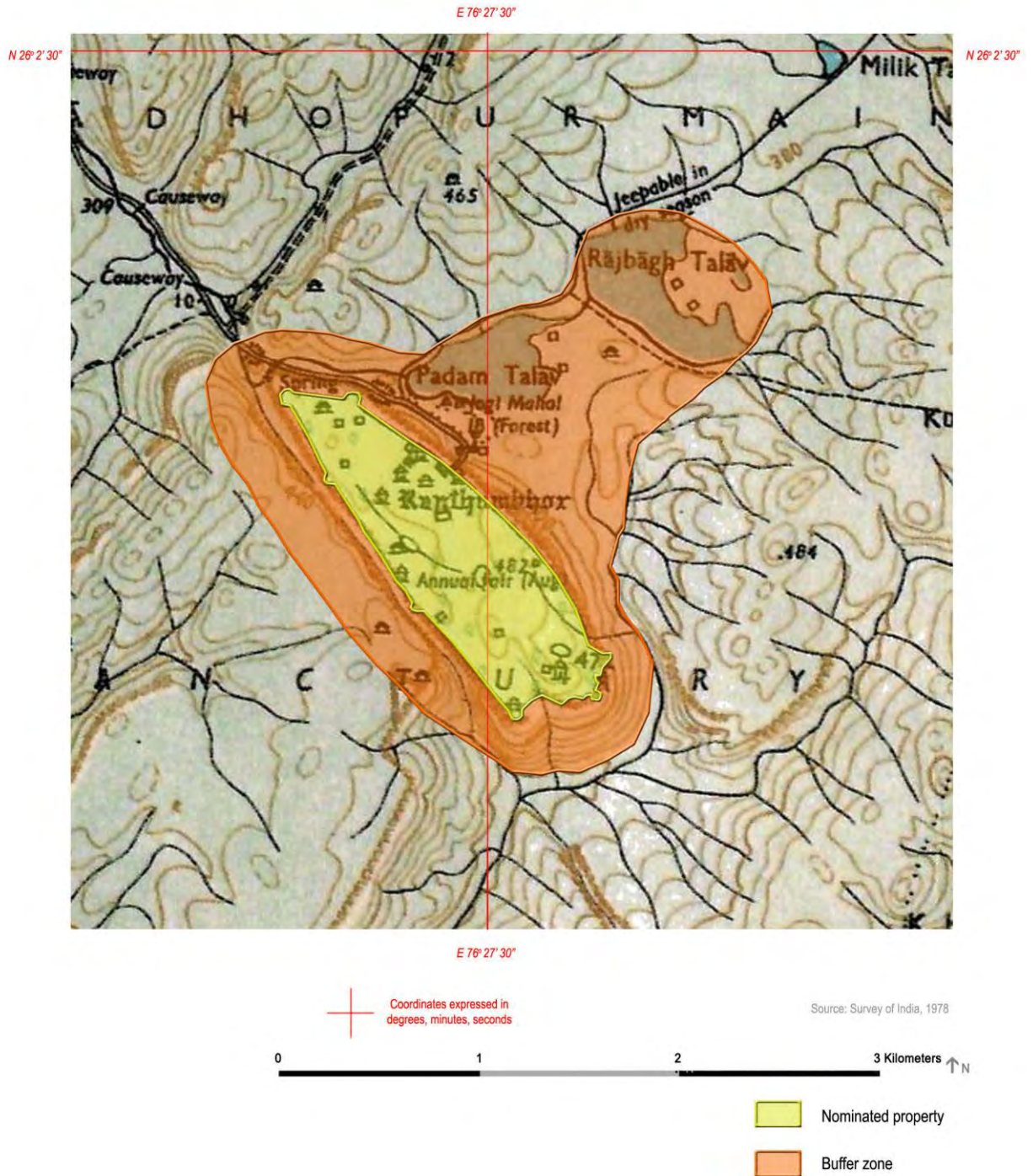


Map 1.1 – Location of 6 Hill Forts in the State of Rajasthan



Map 1.21– Kumbhalgarh Fort – Nominated Property and Buffer Zone

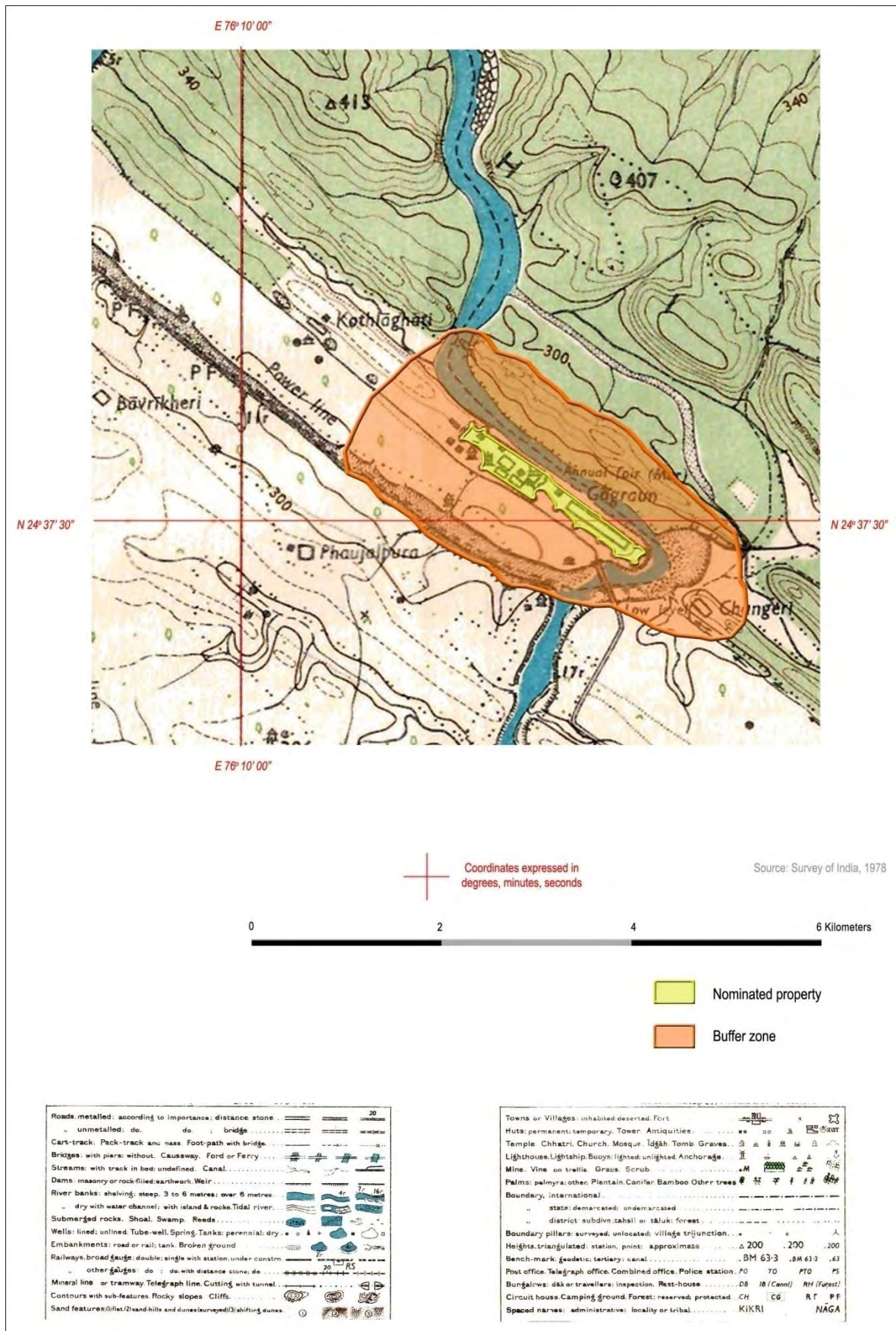
1. Identification



Roads, metalled: according to importance; distance stone	
unmetalled: do. do. do. bridge	
Cart-track, Pack-track and pass, Foot-path with bridge	
Bridges: with piers; without, Causeway, Ford or Ferry	
Streams: with track in bed; undefined, Canal	
Dams: masonry or rock-filled; earthwork, Weir	
River banks: shelving; steep, 3 to 6 metres; over 6 metres	
dry with water channel; with island & rocks; Tidal river	
Submerged rocks, Shoal, Swamp, Reeds	
Wells: lined; unlined; Tube-well; Spring; Tanks; perennial; dry	
Embankments: road or rail; tank, Broken ground	
Railways: broad gauge: double; single with station; under constr.	
other gauges: do. do. with distance stone; do.	
Mineral line or tramway, Telegraph line, Cutting with tunnel	
Contours with sub-features, Rocky slopes, Cliffs	
Sand features: dunes, Sand hills and dunes; surveyed; shifting dunes	

Towns or Villages: inhabited; deserted, Fort	
Huts: permanent; temporary, Tower, Antiquities	
Temple, Chhatra, Church, Mosque, Idgah, Tomb, Graves	
Lighthouse, Lightship, Buoys: lighted; unlighted, Anchorage	
Mine, Vine on trunks, Grass, Scrub	
Palms; palmyra; other, Plantain, Conifer, Bamboo, Other trees	
Boundary, international	
state; demarcated; undemarcated	
district; subdiv. (tahsil) or taluk; forest	
Boundary pillars: surveyed; unlocated; village junction	
Heights, triangulated: station; point; approximate	
Bench-mark: geodetic; tertiary; canal, BM 63-3	
Post office, Telegraph office, Combined office, Police station, PO	
Bungalows: dak or traveller's; inspection, Rest-house	
Circuit house, Camping ground, Forest: reserved; protected	
Spaced names: administrative; locality or tribal	

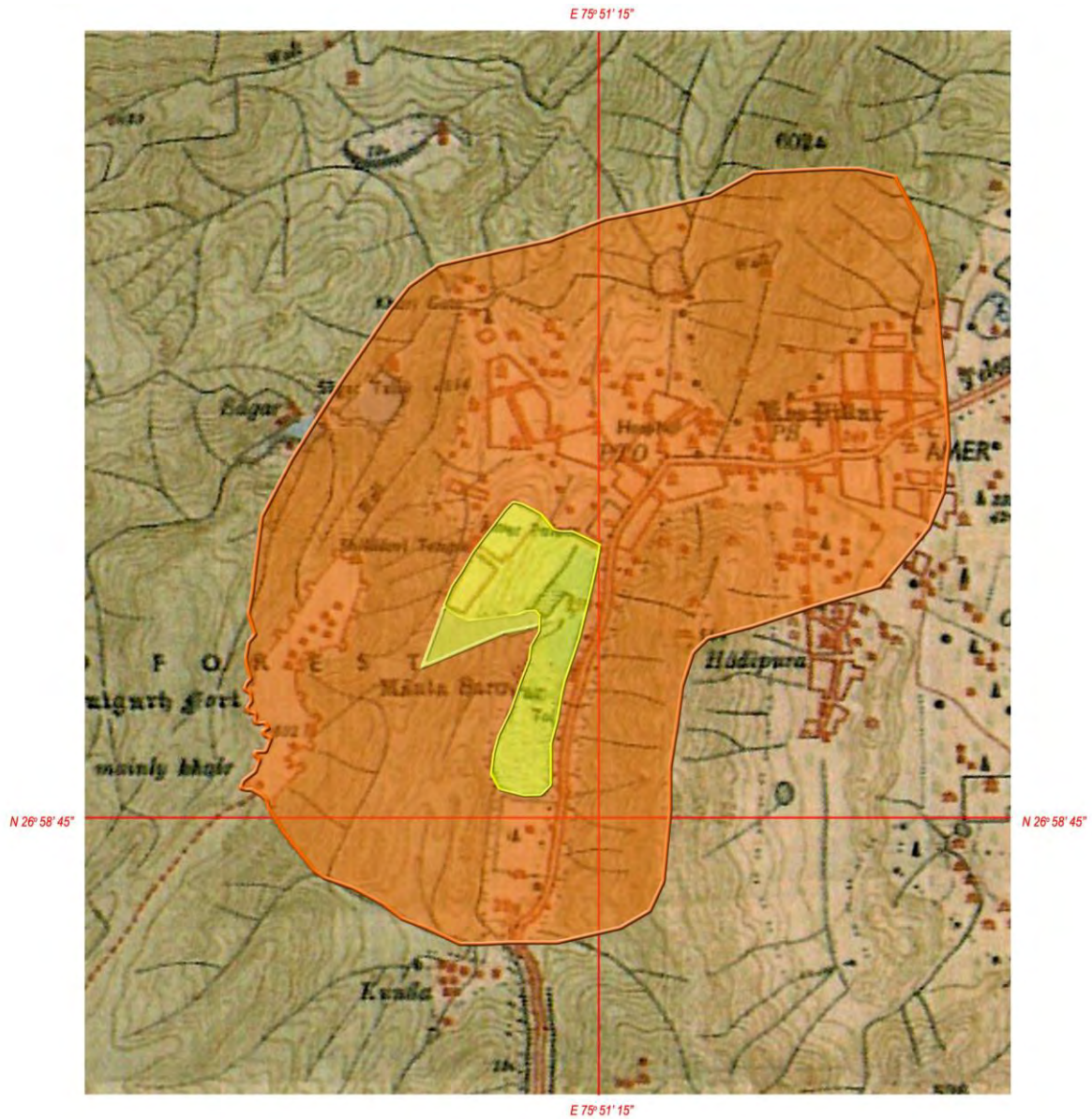
Map 1.22 – Ranthambore Fort – Nominated Property and Buffer Zone



Map 1.23 – Gagraon Fort – Nominated Property and Buffer Zone

1. Identification

1.27



Coordinates expressed in degrees, minutes, seconds

Source: Survey of India, 1978

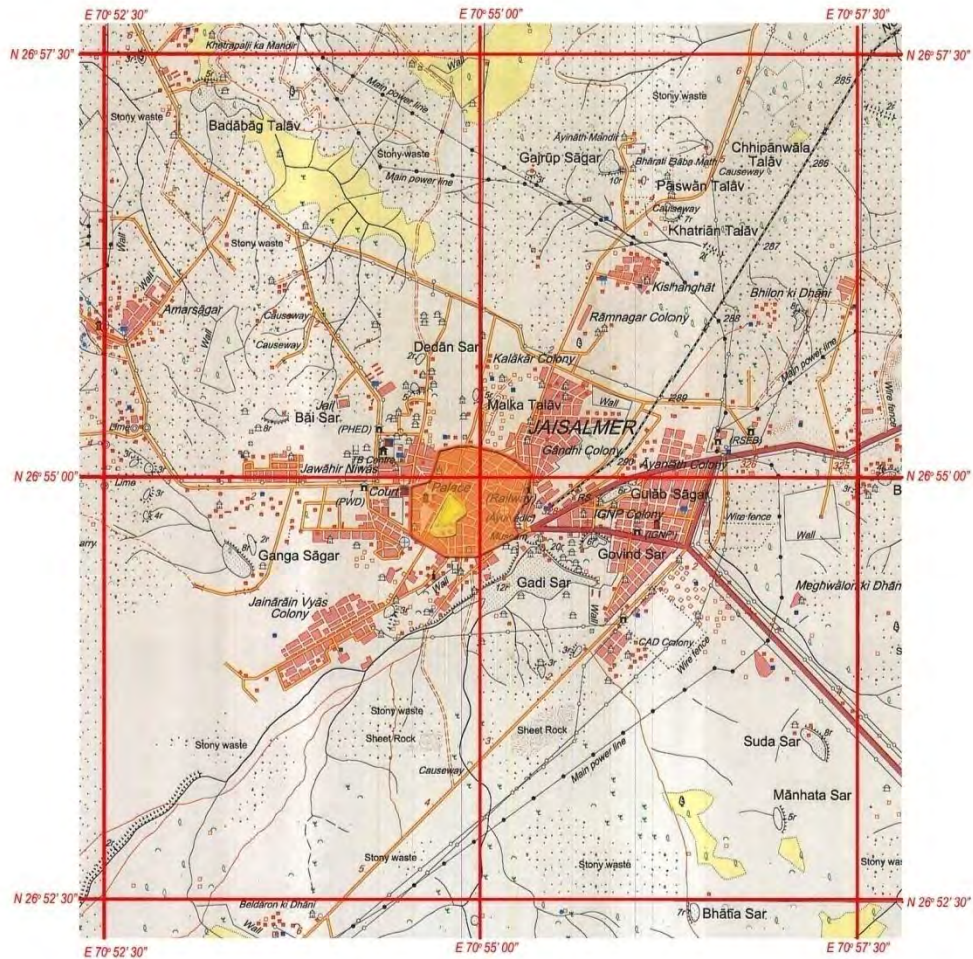


- Nominated property
- Buffer zone

Roads metalled: according to importance: distance stone	
unmetalled: do. do. do. bridge	
Cart-track: Peck-track and path: Path-path with bridge	
Bridges with pier: without Causeway Ford or Ferry	
Streams with track in bed: undefined Canal	
Dams: masonry or race-filled earthwork Weir	
River banks: shewing steep 3 to 6 metres: over 6 metres	
dry with water channel: with island & rocks Tidal river	
Submerged rocks Shoal Swamp Reeds	
Wells: used, unused Tube-well Spring Tanks perennial dry	
Embarkments: road or rail tank Broken ground	
Railways: broad gauge double single with station under canopy	
other gauges: do. do. with distance view: do	
Light railway or tramway Telegraph line Cutting with tunnel	
Contours with sub-features Rocky slopes Cliffs	
Band features: life: 12 band hills and dunes: 12 band dunes	

Towns or Villages: inhabited: deserted Fort	
Ruins: permanent temporary Tower Antiquities	
Temple Chhatra Church Mosque Idgh Tomb Graves	
Lighthouse Lightship Buoy: lighted unlighted Anchorage	
Mine: Vine on trellis Grass Scrub	
Palms: palmyra: other: Plantain Conifer Bamboo Other trees	
Boundary: international	
state demarcated undemarcated	
district: subdin: tahsil or taluk: forest	
Boundary pillars: surveyed: unlocated: village: trijunction	
Height: triangulated: station: peak: approximate	
Bench-mark: geodetic: tertiary: canal	
Post office: Telegraph office: Combined office: Police station	
Bungalows: dhak or travellers: inspection: Rest-house	
Circuit house: Camping ground: forest: reserved: protected	
Spaced names: administrative: locality or tribal	

Map 1.24 Amber Fort – Nominated Property and Buffer Zone



Coordinates expressed in degrees, minutes, seconds

Source: Survey of India, 1978



Nominated Property
Buffer Zone

Express highway: with toll; with bridge; with distance stone	
Roads, metalled: according to importance	
Roads, double carriageway, according to importance	
Unmetalled road, Cart-track, Pack-track with pass, Foot-path	
Streams: with track in bed; undefined, Canal	
Dams: masonry or rock-filled, earthwork, Weir	
River: dry with water channel; with island & rocks, Tidal river	
Submerged rocks, Shoal, Swamp, Reeds	
Wells: lined; unlined, Tube-well, Spring, Tanks: perennial; dry	
Embankments: road or rail; tank, Broken ground	
Railways, broad gauge: double; single with station; under constr.	
Railways, other gauges: double; single with distance stone; do.	
Mineral line or tramway, Kin, Cutting with tunnel	
Contours with sub-features, Rocky slopes, Cliffs	
Sand features: (1) flat, (2) sand-hills(permanent), (3) dunes(shifting)	
Towns or Villages: inhabited; deserted, Fort	
Huts: permanent; temporary, Tower, Antiquities	
Temple, Chhatr, Church, Mosque, Logah, Tomb, Graves	

Lighthouse, Lightship, Buoys: lighted; unlighted, Anchorage	
Mine, Vine on trellis, Grass, Scrub	
Palms: palmyra; other, Plantain, Conifer, Bamboo, Other trees	
Areas: cultivated; wooded, Surveyed tree	
Boundary, International	
state: demarcated; undemarcated	
district, subdivision; tahsil or taluk; forest	
Boundary pillars: surveyed; unlocated	
Heights, triangulated: station; point; approximate	
Bench-mark: geodetic; tertiary, canal	
Post office, Telegraph office, Overhead tank	
Rest house or inspection bungalow, Circuit house, Police station	
Camping ground, Forest: reserved; protected	
Spaced names: administrative; locality or tribal	
Hospital, Dispensary, Veterinary: Hospital / Dispensary	
Aerodrome, Helipad, Tourist site	
Power line: with pylons surveyed; with poles unsurveyed	

Map 1.25 – Jaisalmer Fort – Nominated Property and Buffer Zone